



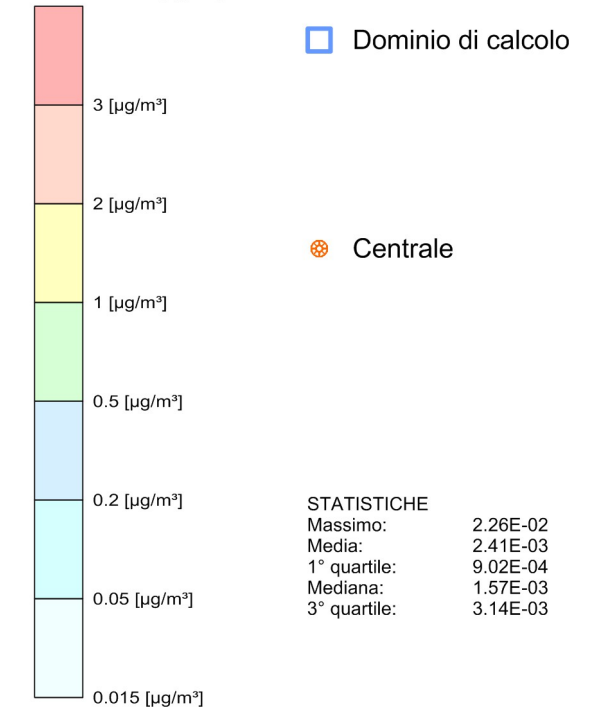
Tavola AV-12.a
Scenario attuale
(area vasta)

**Ricadute delle emissioni
 convogliate ai camini**

NH₃ - Concentrazione media annua [µg/m³]

Limite di legge (D.Lgs. 155/2010): N/A

Max: 0.0226 [µg/m³]



Sistema di Riferimento
 ETRS89 / UTM zona 33N

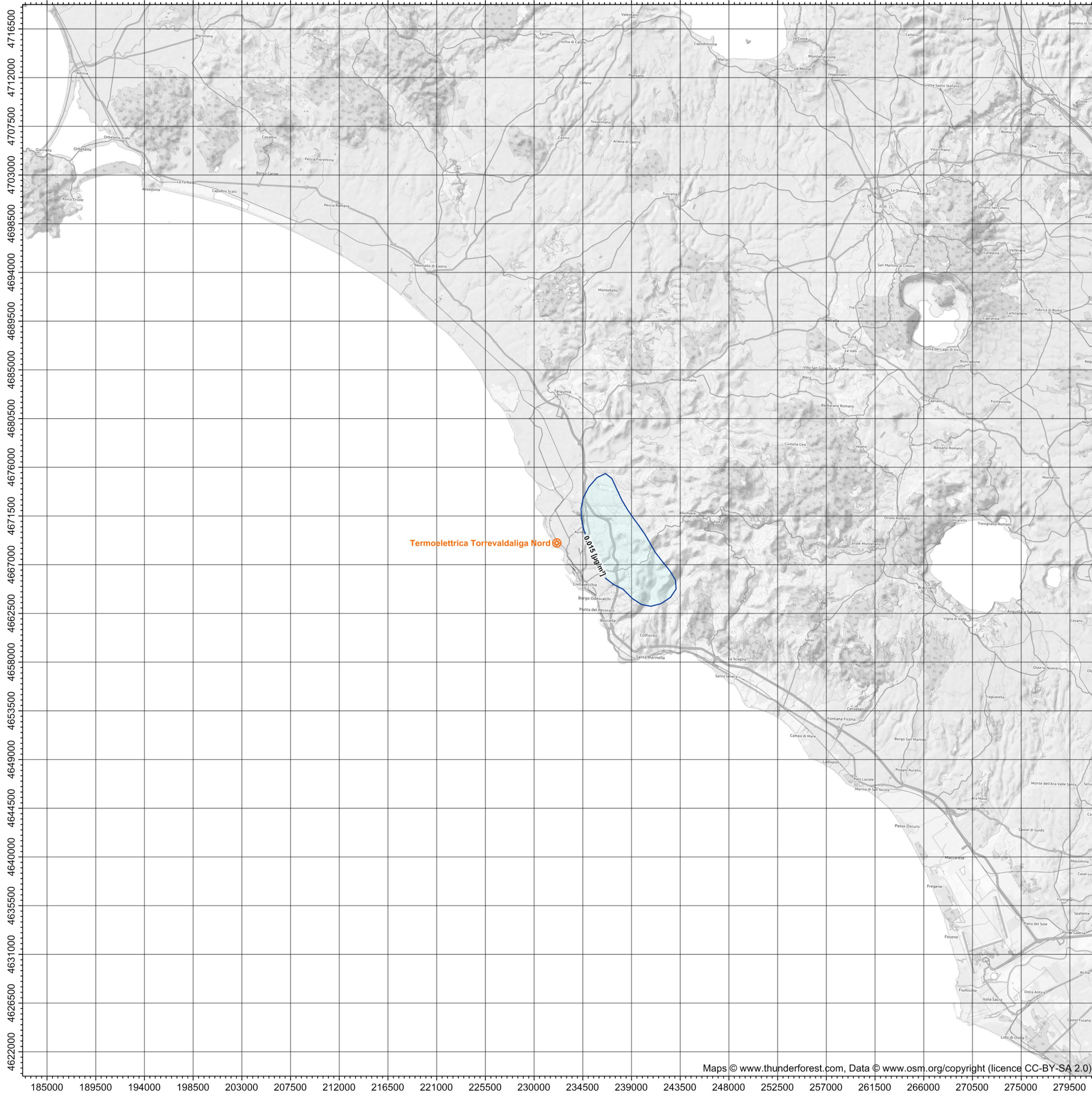
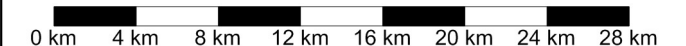




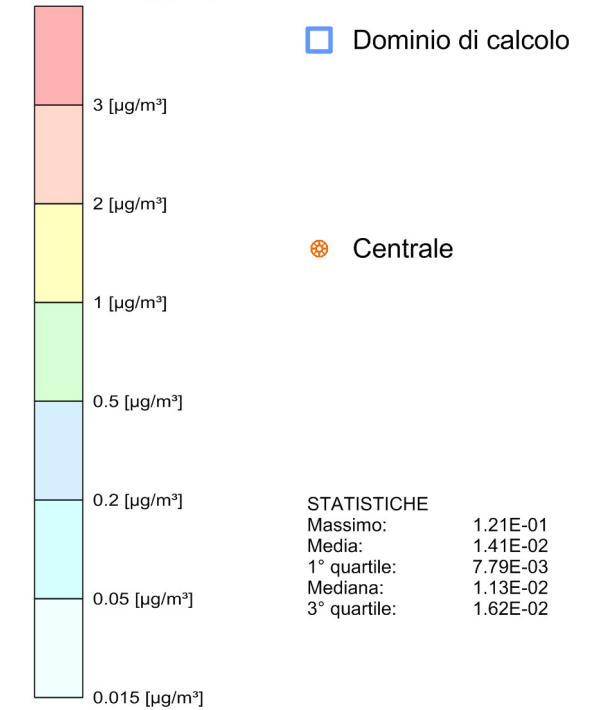
Tavola AV-12.p3
 Scenario di progetto [fase 3]
 (area vasta)

**Ricadute delle emissioni
 convogliate ai camini**

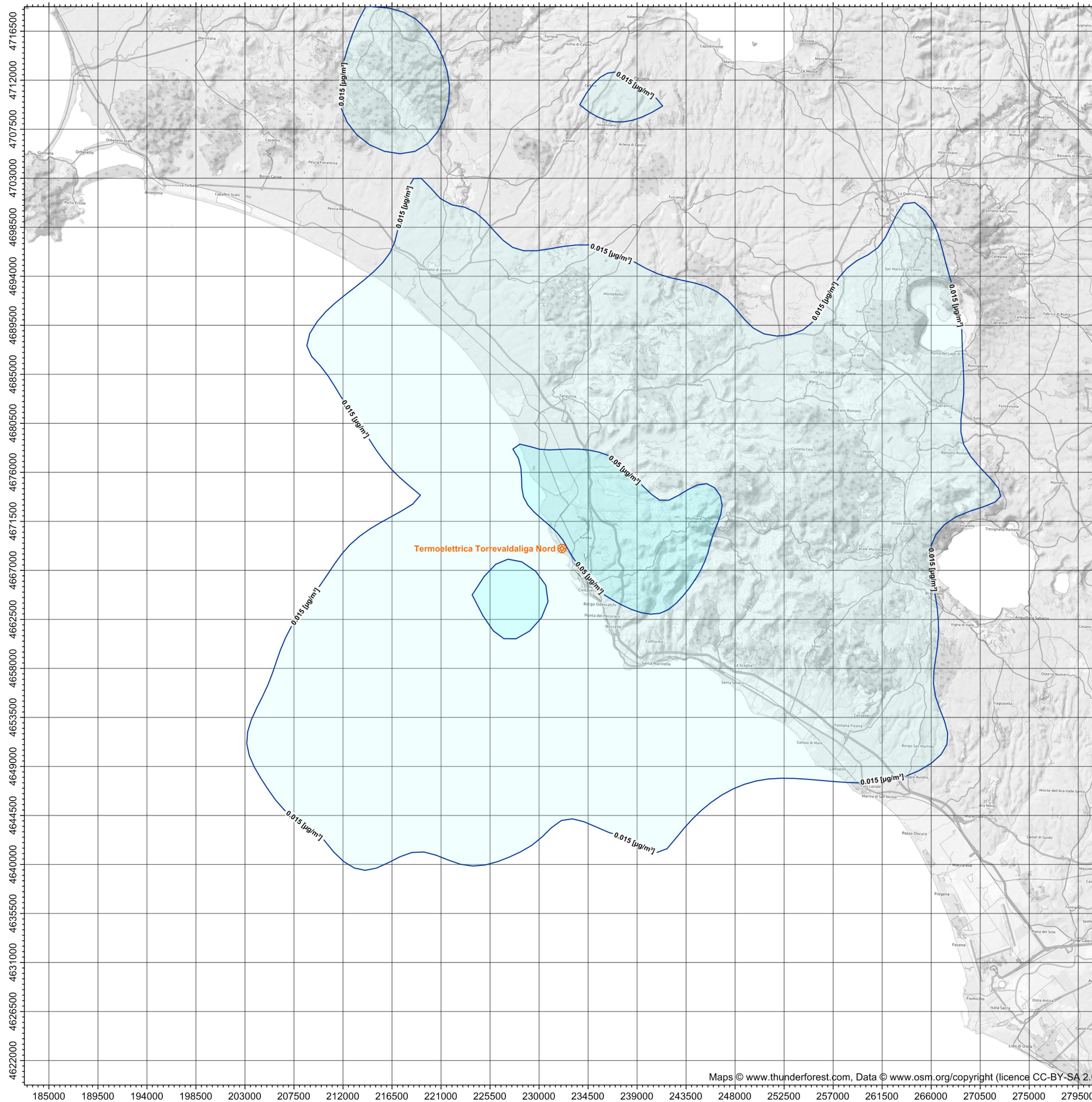
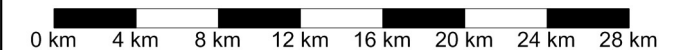
NH₃ - Concentrazione media annua [μg/m³]

Limite di legge (D.Lgs. 155/2010): N/A

Max: 0.121 [μg/m³]



Sistema di Riferimento
 ETRS89 / UTM zona 33N



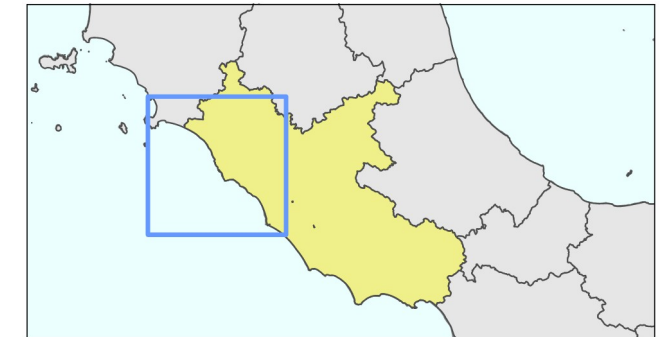


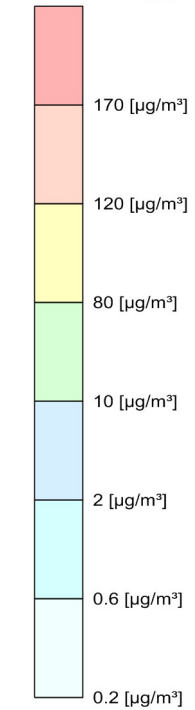
Tavola AV-13.a
 Scenario attuale
 (area vasta)

**Ricadute delle emissioni
 convogliate ai camini**

NH₃ - Massimo della concentrazione
 giornaliera [µg/m³]

Limite di legge (D.Lgs. 155/2010): N/A
 TLV-TWA: 17 mg/m³ (ACGIH, 2006)

Max: 0.736 [µg/m³]



□ Dominio di calcolo

● Centrale

| STATISTICHE | |
|--------------|----------|
| Massimo: | 7.36E-01 |
| Media: | 8.33E-02 |
| 1° quartile: | 4.19E-02 |
| Mediana: | 5.99E-02 |
| 3° quartile: | 9.27E-02 |



Sistema di Riferimento
 ETRS89 / UTM zona 33N

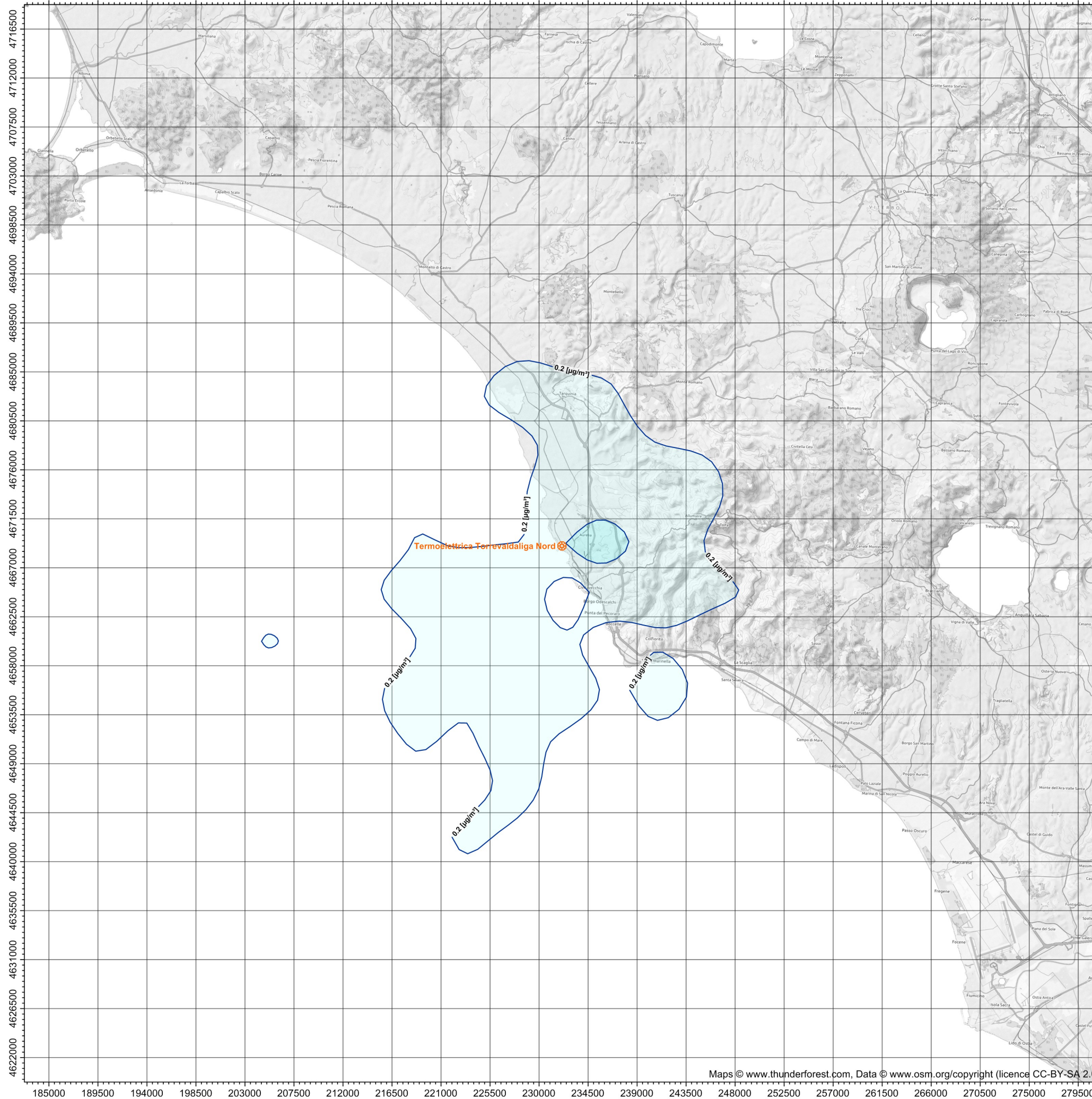
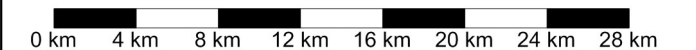




Tavola AV-13.p3
 Scenario di progetto [fase 3]
 (area vasta)

**Ricadute delle emissioni
 convogliate ai camini**

NH₃ - Massimo della concentrazione
 giornaliera [µg/m³]
 Limite di legge (D.Lgs. 155/2010): N/A
 TLV-TWA: 17 mg/m³ (ACGIH, 2006)

