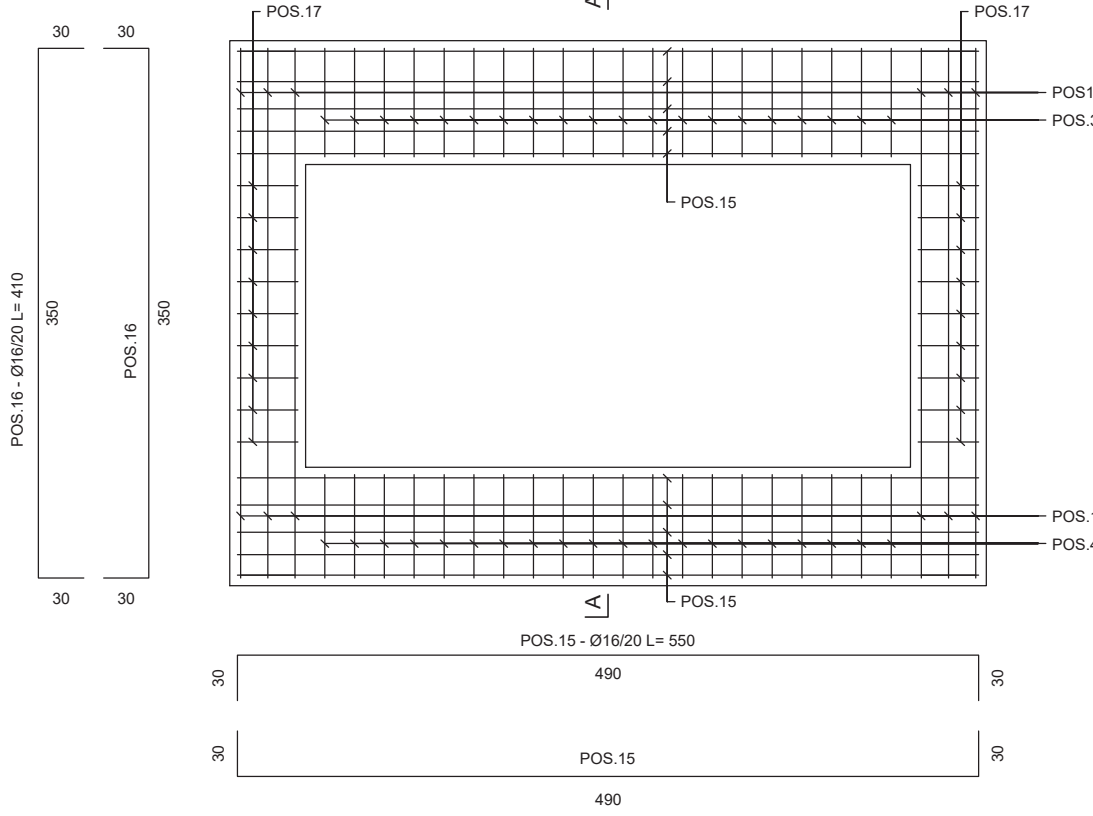
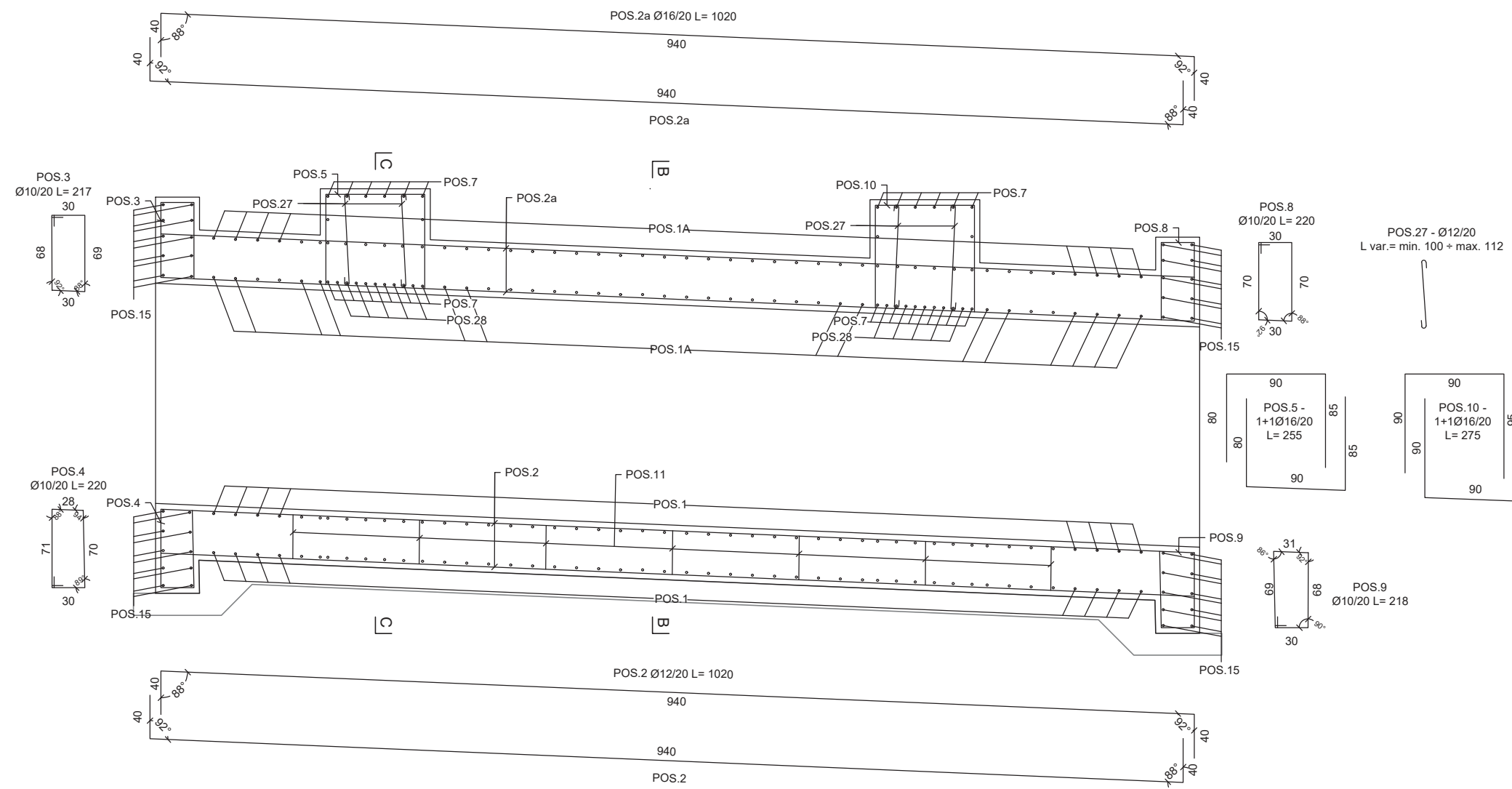


**TOMBINO**

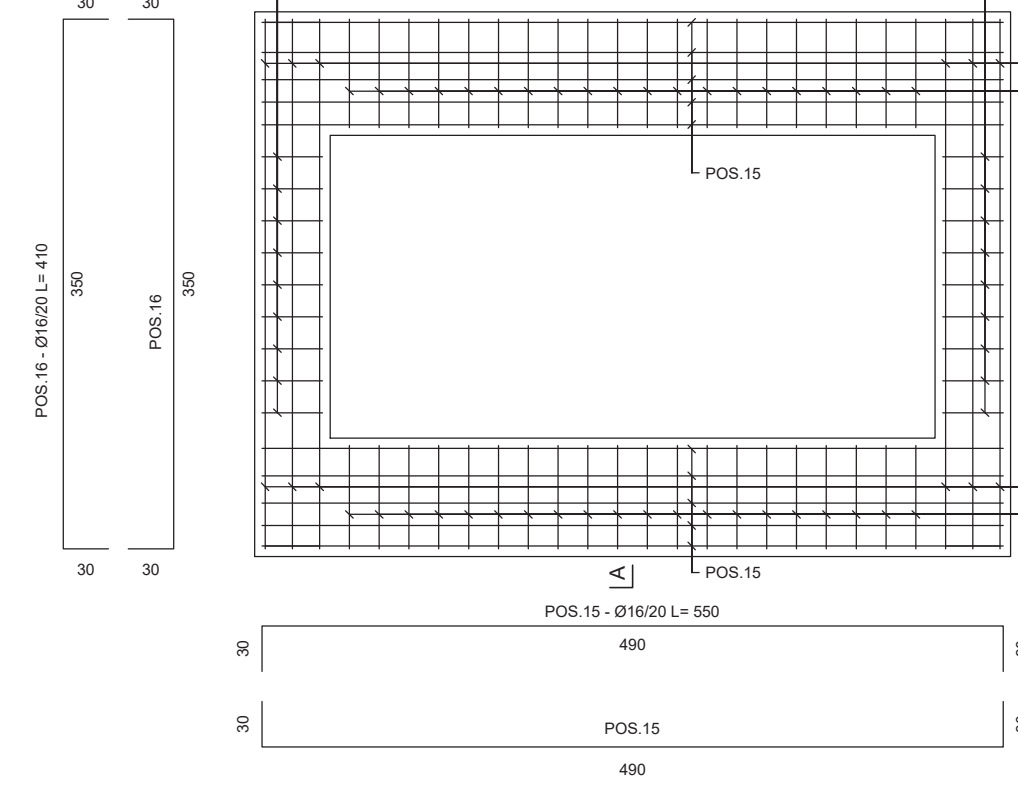
**PORTALE DI IMBOCCO**  
SCALA 1:50



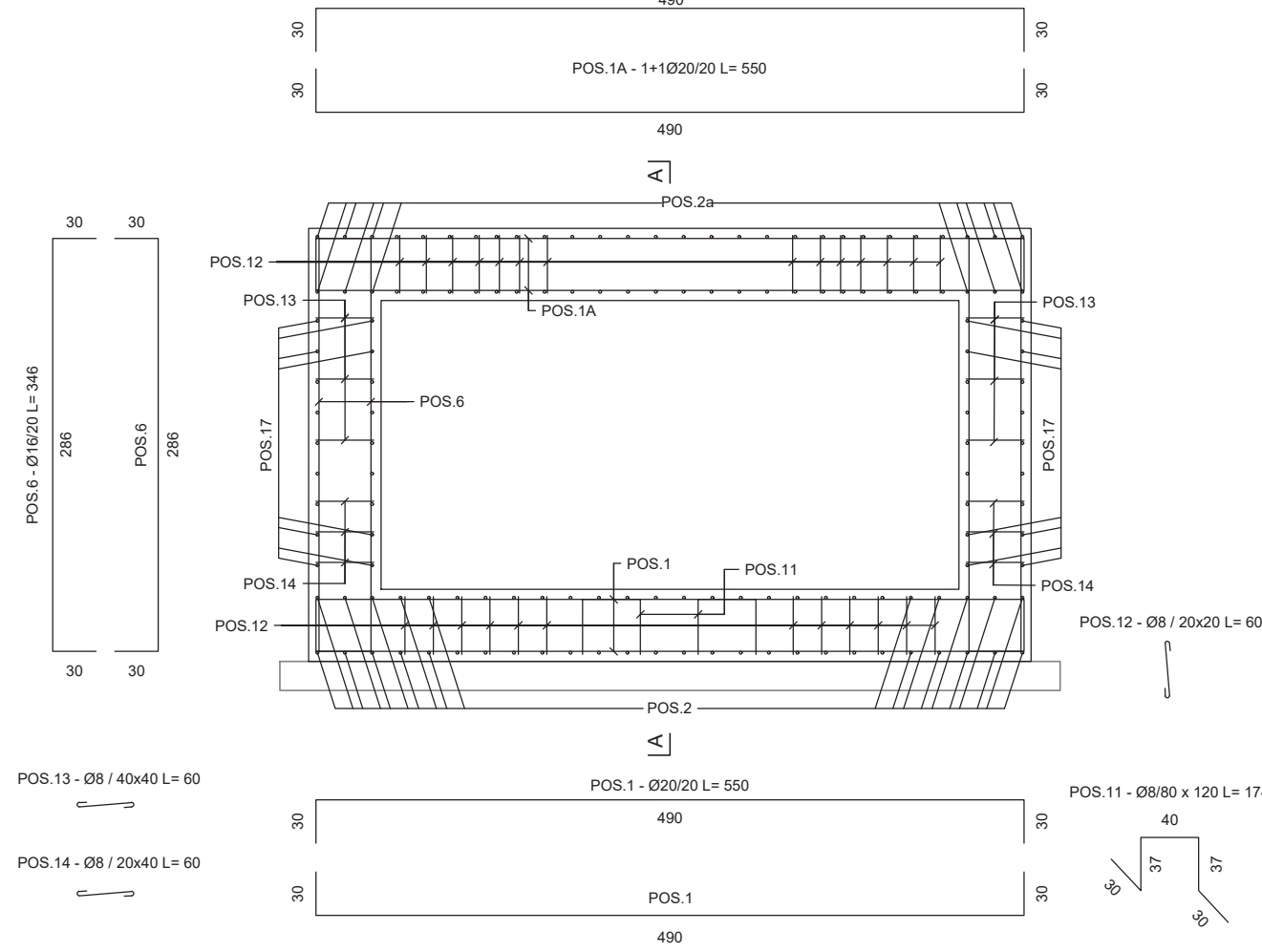
**SEZIONE LONGITUDINALE A-A**  
SCALA 1:50



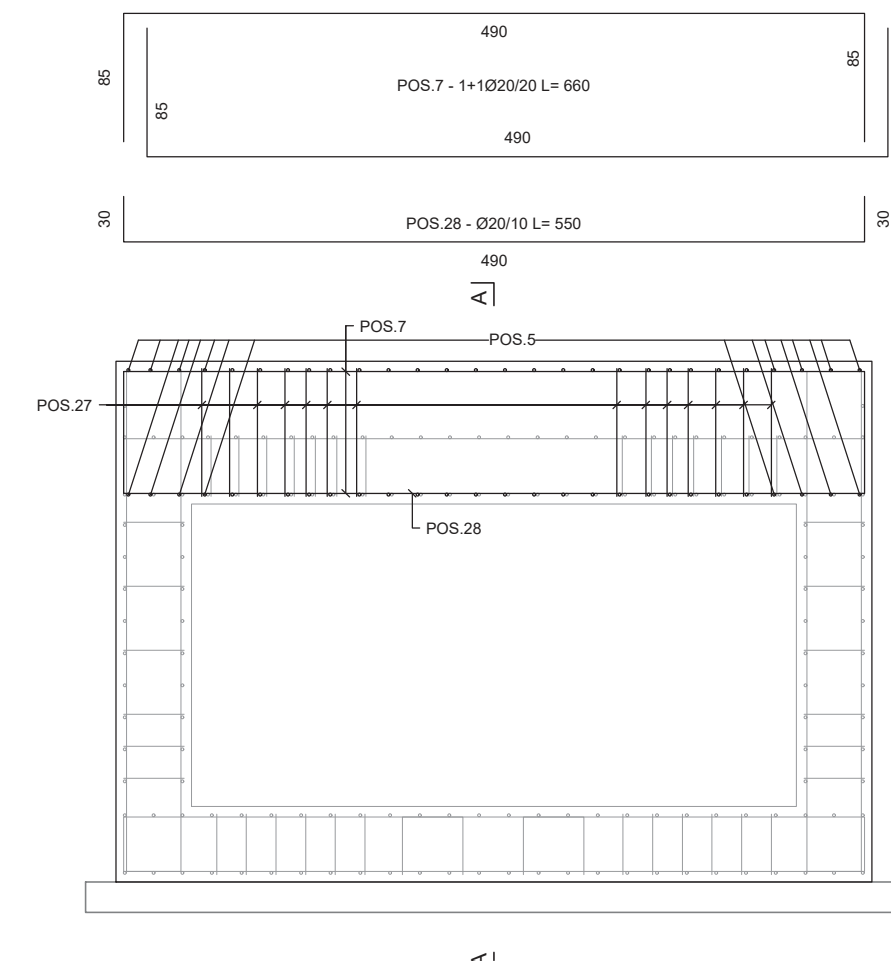
**PORTALE DI SBocco**  
SCALA 1:50



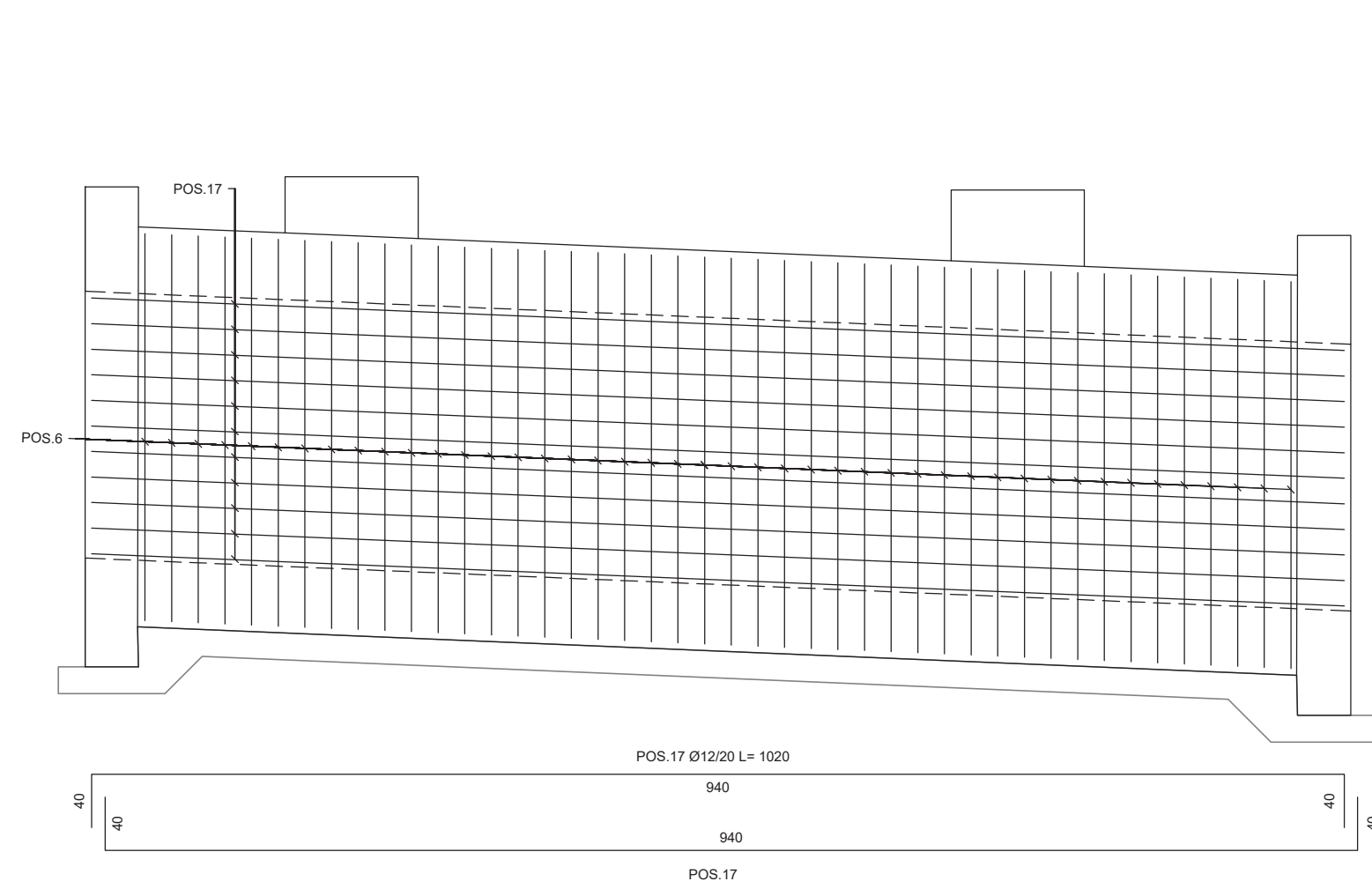
**SEZIONE TRASVERSALE B-B**  
SCALA 1:50



**SEZIONE TRASVERSALE C-C**  
SCALA 1:50



**ARMATURA PARETI VERTICALI**  
SCALA 1:50



**MURI**

**SEZIONE D-D**  
SCALA 1:50

