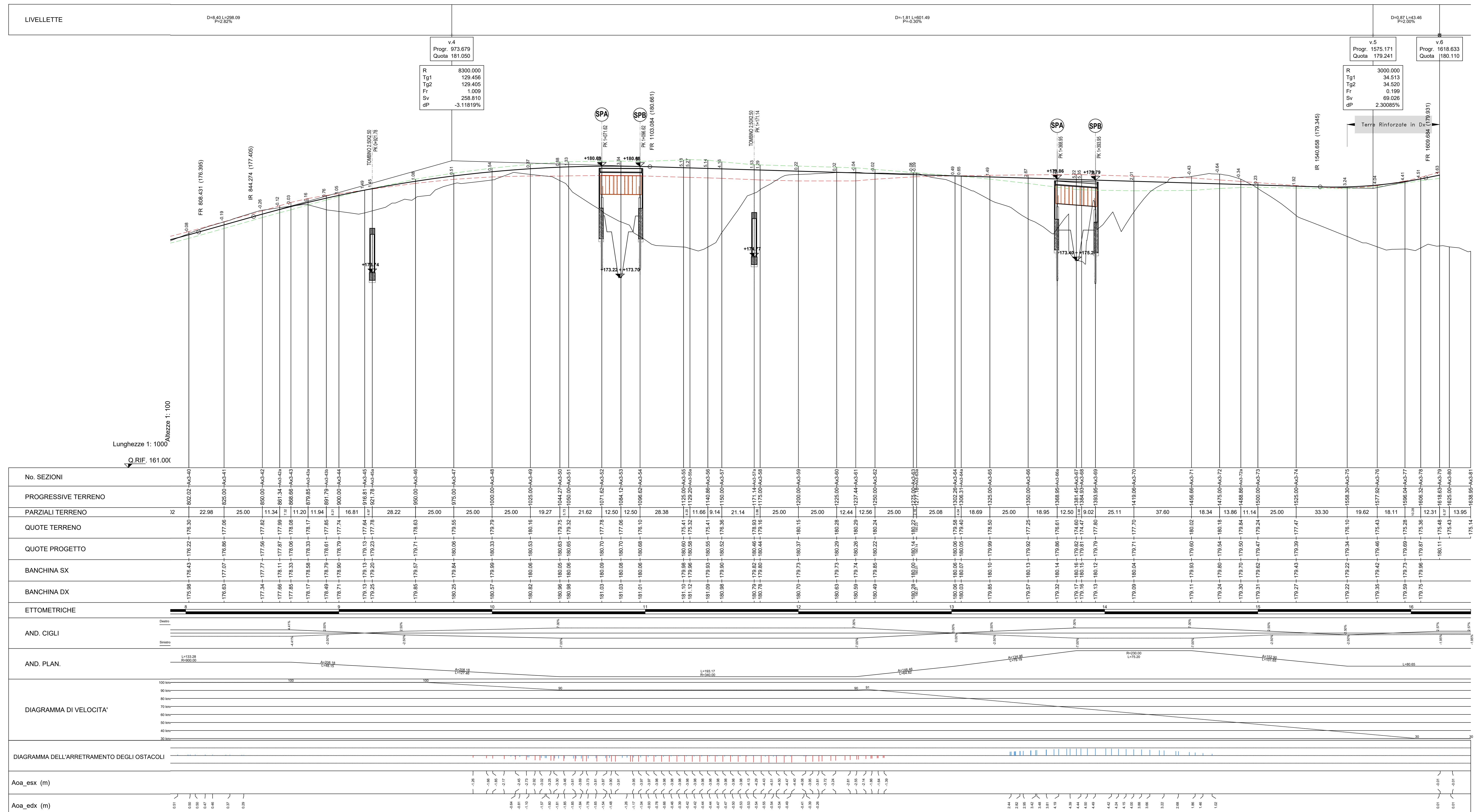


N.B. - Nelle località urbane è prevista la posa dello strato d'usura con argilla espansa.



No. SEZIONI	PROGRESSIVE TERRENO	PARZIALI TERRENO	QUOTE TERRENO	QUOTE PROGETTO	BANCHINA SX	BANCHINA DX	ETOMETRICHE	AND. CIGLI	AND. PLAN.	DIAGRAMMA DI VELOCITA'	DIAGRAMMA DELL'ARRETRAMENTO DEGLI OSTACOLI	Aoa_exs (m)	Aoa_edx (m)
12	802.00+AC-40	22.98	176.22	176.30	-175.98	-176.43	4.1%	4.1%	L133.38	100	0.00	0.00	0.00
13	825.00+AC-41	25.00	177.06	177.06	-176.63	-177.07	0.0%	0.0%	L133.38	100	0.00	0.00	0.00
14	850.00+AC-42	11.34	177.82	177.82	-177.34	-177.77	0.0%	0.0%	L133.38	100	0.00	0.00	0.00
15	861.34+AC-43	28.22	177.99	177.99	-177.66	-178.11	0.0%	0.0%	L133.38	100	0.00	0.00	0.00
16	866.66+AC-43	11.20	178.08	178.08	-177.85	-178.33	0.0%	0.0%	L133.38	100	0.00	0.00	0.00
17	879.85+AC-43	11.94	178.17	178.17	-178.17	-178.58	0.0%	0.0%	L133.38	100	0.00	0.00	0.00
18	891.79+AC-43	16.81	178.26	178.26	-178.49	-178.79	0.0%	0.0%	L133.38	100	0.00	0.00	0.00
19	900.00+AC-44	18.22	178.33	178.33	-178.71	-178.90	0.0%	0.0%	L133.38	100	0.00	0.00	0.00
20	950.00+AC-49	25.00	178.63	178.63	-179.85	-179.57	0.0%	0.0%	L133.38	100	0.00	0.00	0.00
21	975.00+AC-47	25.00	179.55	179.55	-180.25	-179.84	0.0%	0.0%	L133.38	100	0.00	0.00	0.00
22	1000.00+AC-49	25.00	179.79	179.79	-180.57	-179.89	0.0%	0.0%	L133.38	100	0.00	0.00	0.00
23	1025.00+AC-49	19.27	180.16	180.16	-180.82	-180.06	0.0%	0.0%	L133.38	100	0.00	0.00	0.00
24	1044.21+AC-50	12.50	180.25	180.25	-180.98	-180.05	0.0%	0.0%	L133.38	100	0.00	0.00	0.00
25	1050.00+AC-51	21.62	180.32	180.32	-180.98	-180.06	0.0%	0.0%	L133.38	100	0.00	0.00	0.00
26	1071.62+AC-52	12.50	180.78	180.78	-181.03	-180.09	0.0%	0.0%	L133.38	100	0.00	0.00	0.00
27	1084.72+AC-53	12.50	180.78	180.78	-181.03	-180.09	0.0%	0.0%	L133.38	100	0.00	0.00	0.00
28	1086.62+AC-54	28.38	180.78	180.78	-181.03	-180.09	0.0%	0.0%	L133.38	100	0.00	0.00	0.00
29	1125.00+AC-55	11.66	180.94	180.94	-181.10	-179.88	0.0%	0.0%	L133.38	100	0.00	0.00	0.00
30	1129.20+AC-56	12.50	180.94	180.94	-181.10	-179.88	0.0%	0.0%	L133.38	100	0.00	0.00	0.00
31	1140.89+AC-56	11.66	180.94	180.94	-181.10	-179.88	0.0%	0.0%	L133.38	100	0.00	0.00	0.00
32	1150.00+AC-57	9.14	180.94	180.94	-181.10	-179.88	0.0%	0.0%	L133.38	100	0.00	0.00	0.00
33	1171.14+AC-57	21.14	180.94	180.94	-181.10	-179.88	0.0%	0.0%	L133.38	100	0.00	0.00	0.00
34	1175.00+AC-58	25.00	180.94	180.94	-181.10	-179.88	0.0%	0.0%	L133.38	100	0.00	0.00	0.00
35	1200.00+AC-59	25.00	180.94	180.94	-181.10	-179.88	0.0%	0.0%	L133.38	100	0.00	0.00	0.00
36	1225.00+AC-60	12.44	180.94	180.94	-181.10	-179.88	0.0%	0.0%	L133.38	100	0.00	0.00	0.00
37	1237.44+AC-61	12.56	180.94	180.94	-181.10	-179.88	0.0%	0.0%	L133.38	100	0.00	0.00	0.00
38	1250.00+AC-62	25.00	180.94	180.94	-181.10	-179.88	0.0%	0.0%	L133.38	100	0.00	0.00	0.00
39	1277.00+AC-63	25.00	180.94	180.94	-181.10	-179.88	0.0%	0.0%	L133.38	100	0.00	0.00	0.00
40	1302.20+AC-64	25.08	180.94	180.94	-181.10	-179.88	0.0%	0.0%	L133.38	100	0.00	0.00	0.00
41	1306.00+AC-64	18.69	180.94	180.94	-181.10	-179.88	0.0%	0.0%	L133.38	100	0.00	0.00	0.00
42	1325.00+AC-65	25.00	180.94	180.94	-181.10	-179.88	0.0%	0.0%	L133.38	100	0.00	0.00	0.00
43	1330.00+AC-66	18.95	180.94	180.94	-181.10	-179.88	0.0%	0.0%	L133.38	100	0.00	0.00	0.00
44	1358.95+AC-66	12.50	180.94	180.94	-181.10	-179.88	0.0%	0.0%	L133.38	100	0.00	0.00	0.00
45	1381.45+AC-67	9.02	180.94	180.94	-181.10	-179.88	0.0%	0.0%	L133.38	100	0.00	0.00	0.00
46	1386.95+AC-68	25.11	180.94	180.94	-181.10	-179.88	0.0%	0.0%	L133.38	100	0.00	0.00	0.00
47	1393.95+AC-69	37.60	180.94	180.94	-181.10	-179.88	0.0%	0.0%	L133.38	100	0.00	0.00	0.00
48	1419.06+AC-70	18.34	180.94	180.94	-181.10	-179.88	0.0%	0.0%	L133.38	100	0.00	0.00	0.00
49	1475.00+AC-72	13.86	180.94	180.94	-181.10	-179.88	0.0%	0.0%	L133.38	100	0.00	0.00	0.00
50	1488.88+AC-72	11.14	180.94	180.94	-181.10	-179.88	0.0%	0.0%	L133.38	100	0.00	0.00	0.00
51	1500.00+AC-73	25.00	180.94	180.94	-181.10	-179.88	0.0%	0.0%	L133.38	100	0.00	0.00	0.00
52	1525.00+AC-74	19.62	180.94	180.94	-181.10	-179.88	0.0%	0.0%	L133.38	100	0.00	0.00	0.00
53	1558.30+AC-75	18.11	180.94	180.94	-181.10	-179.88	0.0%	0.0%	L133.38	100	0.00	0.00	0.00
54	1577.92+AC-79	12.31	180.94	180.94	-181.10	-179.88	0.0%	0.0%	L133.38	100	0.00	0.00	0.00
55	1586.04+AC-77	13.95	180.94	180.94	-181.10	-179.88	0.0%	0.0%	L133.38	100	0.00	0.00	0.00
56	1606.32+AC-79	18.11	180.94	180.94	-181.10	-179.88	0.0%	0.0%	L133.38	100	0.00	0.00	0.00
57	1616.63+AC-79	12.31	180.94	180.94	-181.10	-179.88	0.0%	0.0%	L133.38	100	0.00	0.00	0.00
58	1625.00+AC-80	13.95	180.94	180.94	-181.10	-179.88	0.0%	0.0%	L133.38	100	0.00	0.00	0.00
59	1638.95+AC-81	175.14	180.94	180.94	-181.10	-179.88	0.0%	0.0%	L133.38	100	0.00	0.00	0.00

ANAS S.p.A.
 Direzione Progettazione e Realizzazione Lavori

S.S.45 DELLA VAL DI TREBBIA
 AMMODERNAMENTO DELLA STRADA STATALE N. 45 DELLA VAL TREBBIA NEL TRATTO CERNUSCA-RIVERGARO

PROGETTO DEFINITIVO

PROGETTAZIONE: ANAS DPPL	SUPPORTO ALLA PROGETTAZIONE:
IPROGETTISTI: ing. ANTONIO SCALAMANDRE Claudio Vig. di Piacenza n. 1067	STUDIO CORONA
IL GEOLOGICO: geol. MARCO MARTINO Claudio Vig. di Livorno n. 4147	ENING ING. ENRICO GARMI
IL RESPONSABILE DEL SIA: ing. ANTONIO SCALAMANDRE Claudio Vig. di Roma n. 472887	SETAC 51 ING. ANTONIO SCALAMANDRE
IL COORDINATORE PER LA SICUREZZA IN FASE DI PROGETTAZIONE: geol. F. PASOLA	ARKE ING. RENATO DEL PRETE
VISTO: IL RESPONSABILE DEL PROCEDIMENTO: ing. Anna Maria MUSCARO	ECOPLAN ING. RENATO DEL PRETE
PROTOCOLLO	DATA

DA031	D - PROGETTO STRADALE DA - ASSE PRINCIPALE PROFILO LONGITUDINALE ASSE PRINCIPALE 03 Tav. 2 di 2
CODICE PROGETTO: DA031	NOME FILE: DA031 - PO0PS00TRAFPO7_A.dwg
PROGETTO: BO0067	REVISIONE: A
LV. PROJ.: D	SCALA: 1:1000/100
N. PROJ.: 18.01	
CODICE ELAB.: P00PS00TRAFPO7	
EMMISSIONE: A	APRILE 2020
REV. DESCRIZIONE	DATA REDATTO VERIFICATO APPROVATO