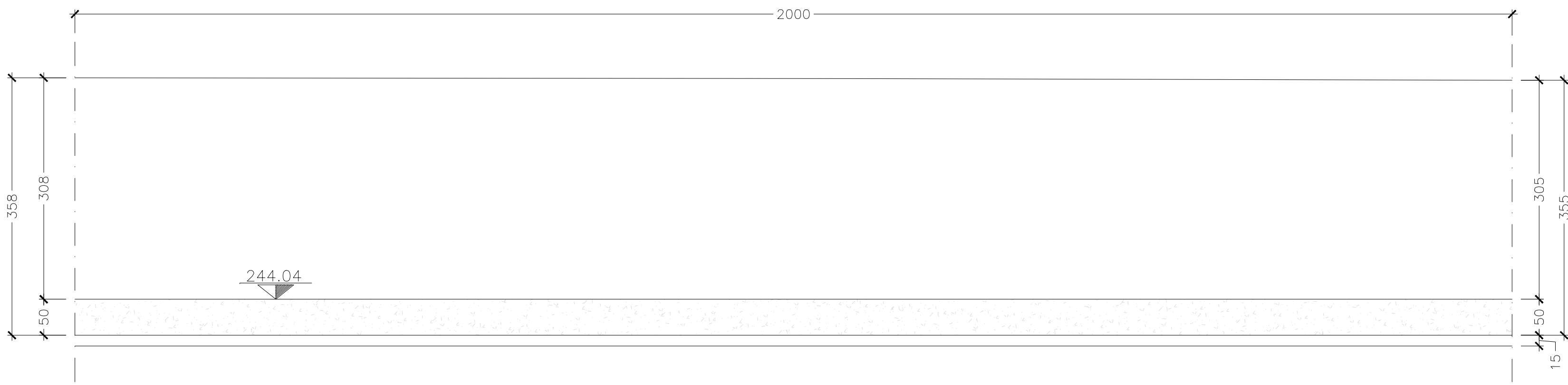
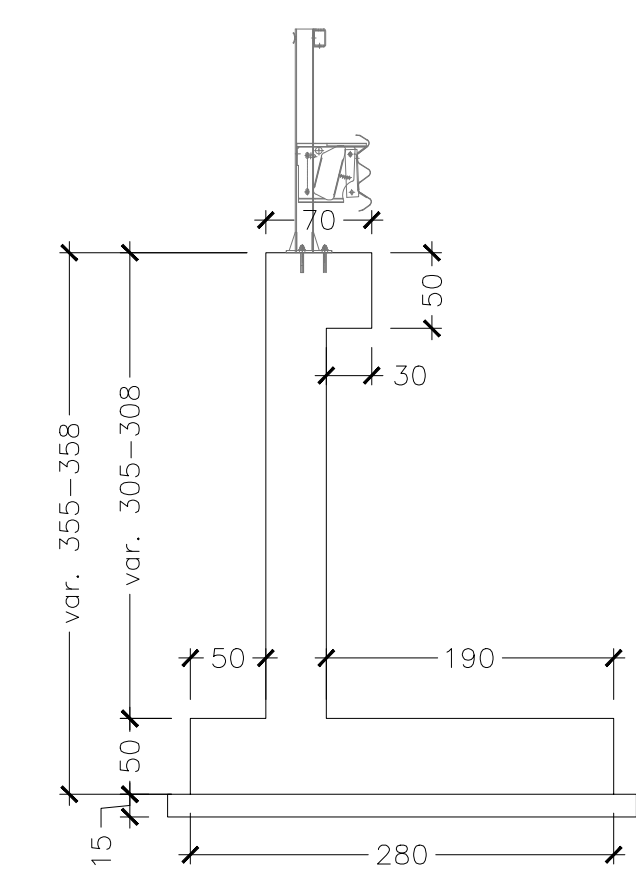


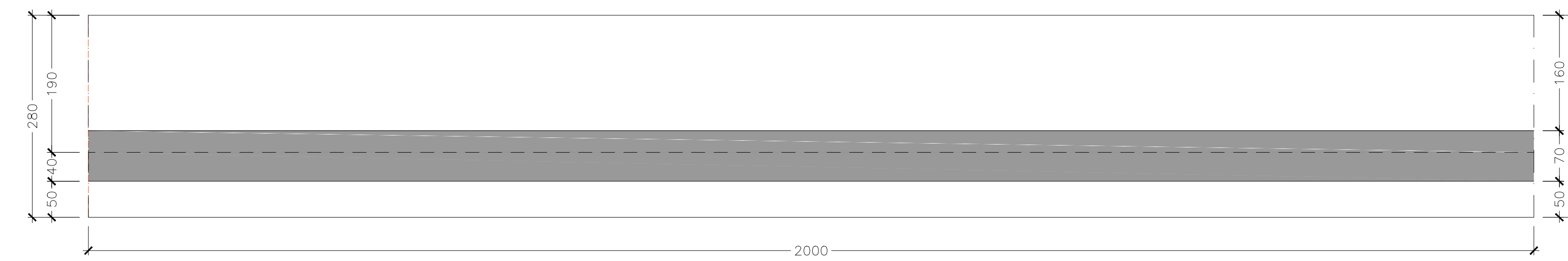
SEZIONE LONGITUDINALE CONCIO F
SCALA 1:50



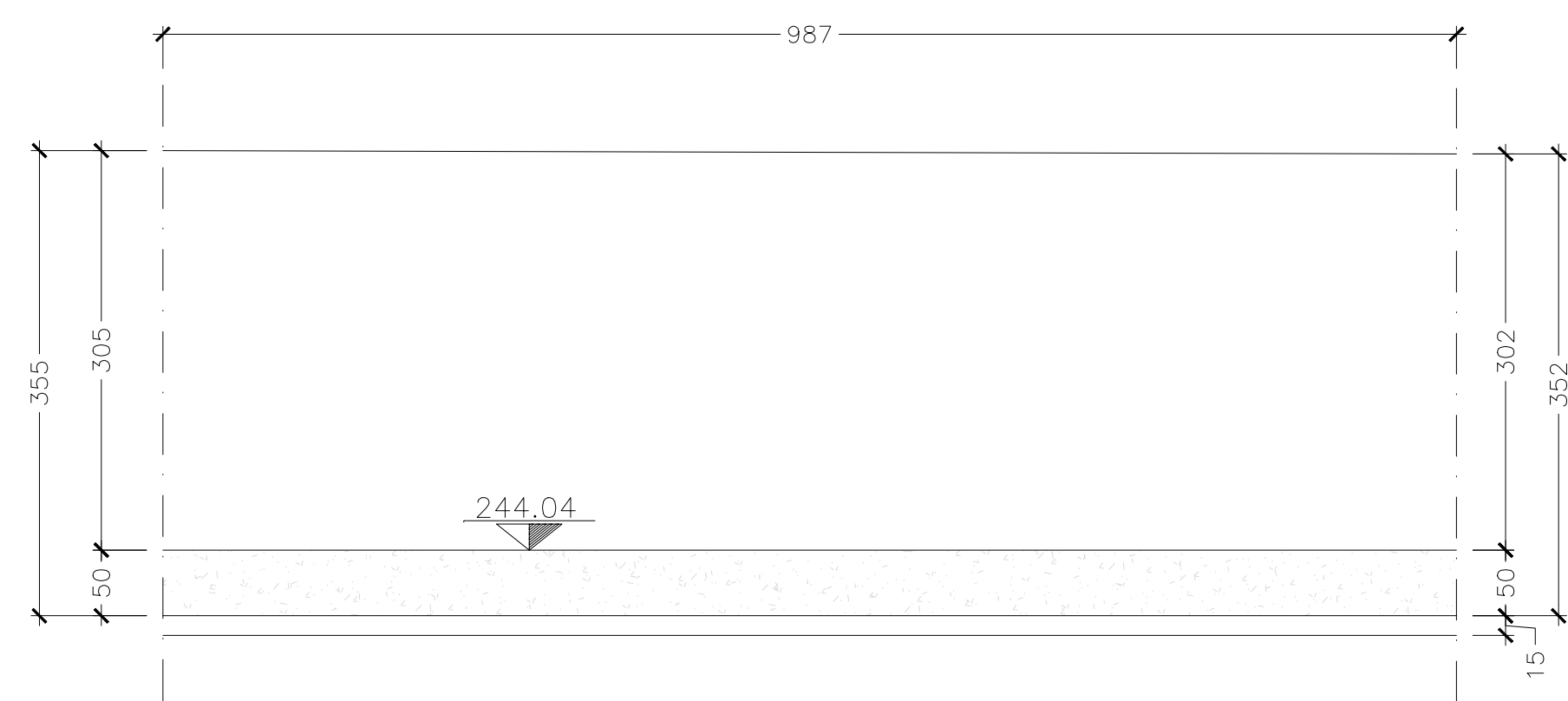
SEZIONE TRASVERSALE CONCIO F
SCALA 1:50



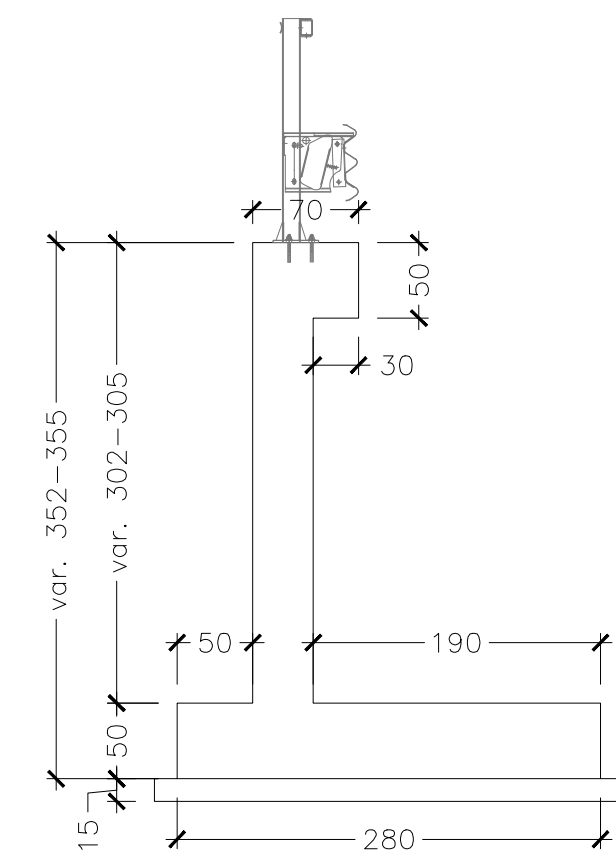
PIANTA CONCIO F
SCALA 1:50



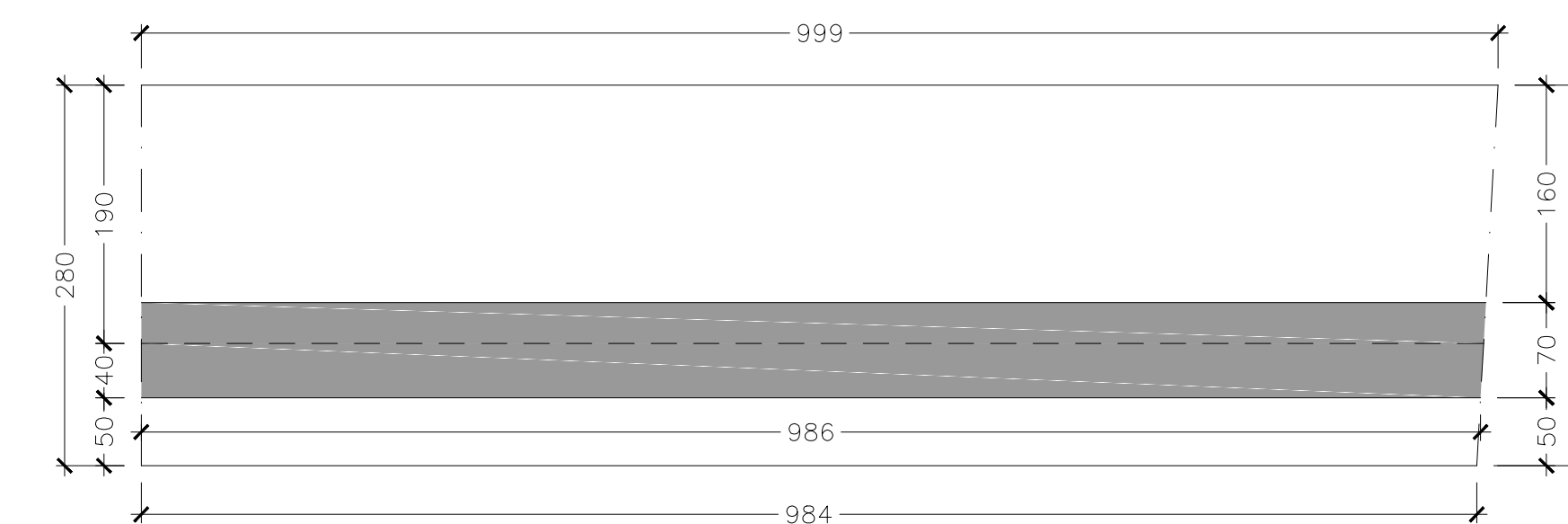
SEZIONE LONGITUDINALE CONCIO G
SCALA 1:50



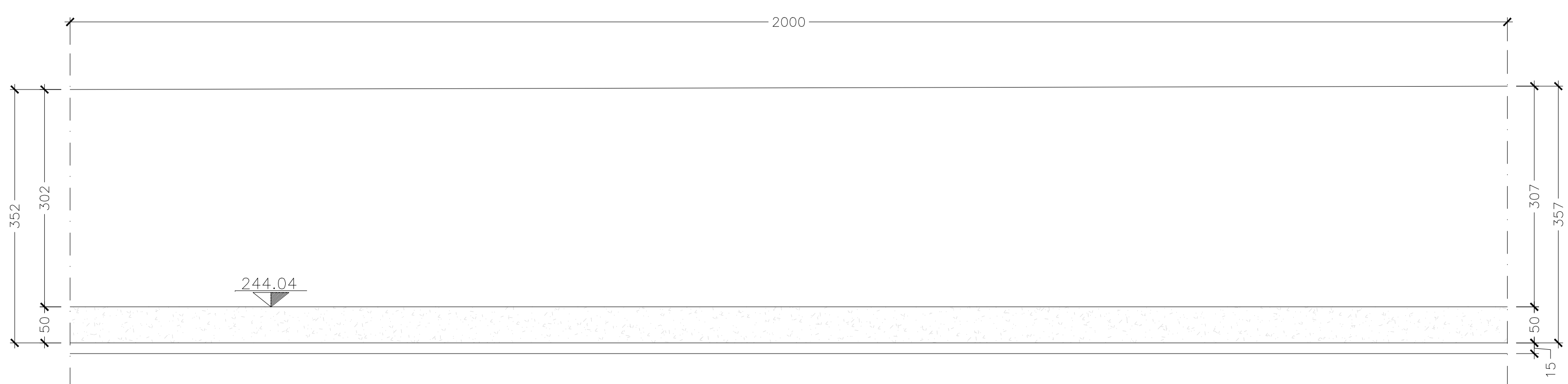
SEZIONE TRASVERSALE CONCIO G
SCALA 1:50



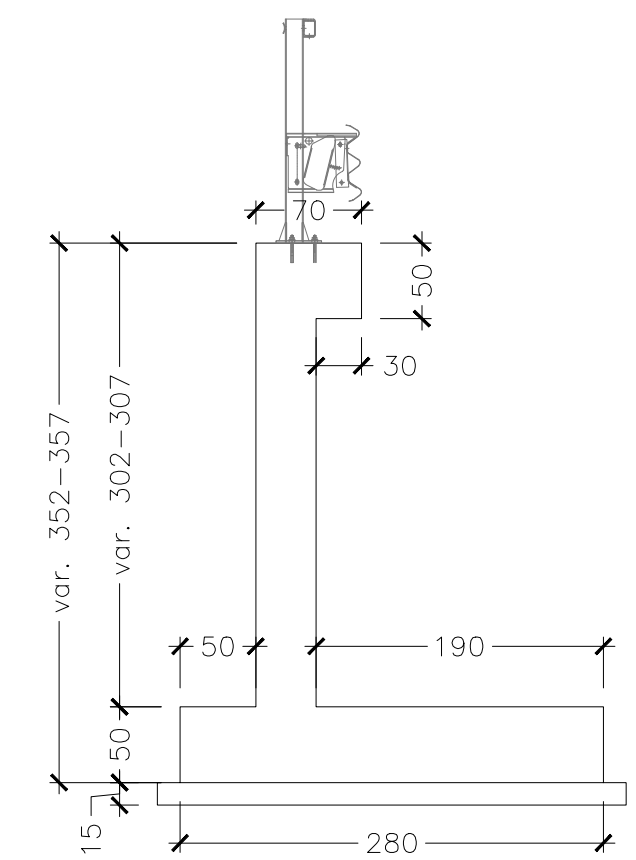
PIANTA CONCIO G
SCALA 1:50



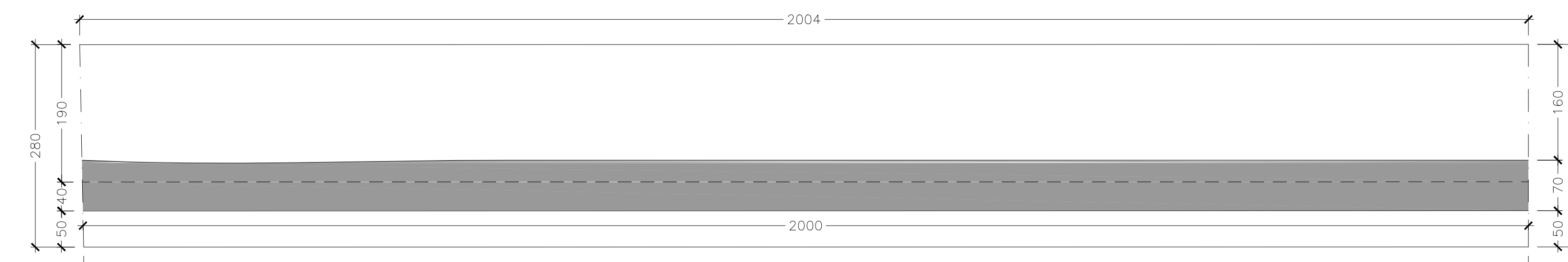
SEZIONE LONGITUDINALE CONCIO H
SCALA 1:50



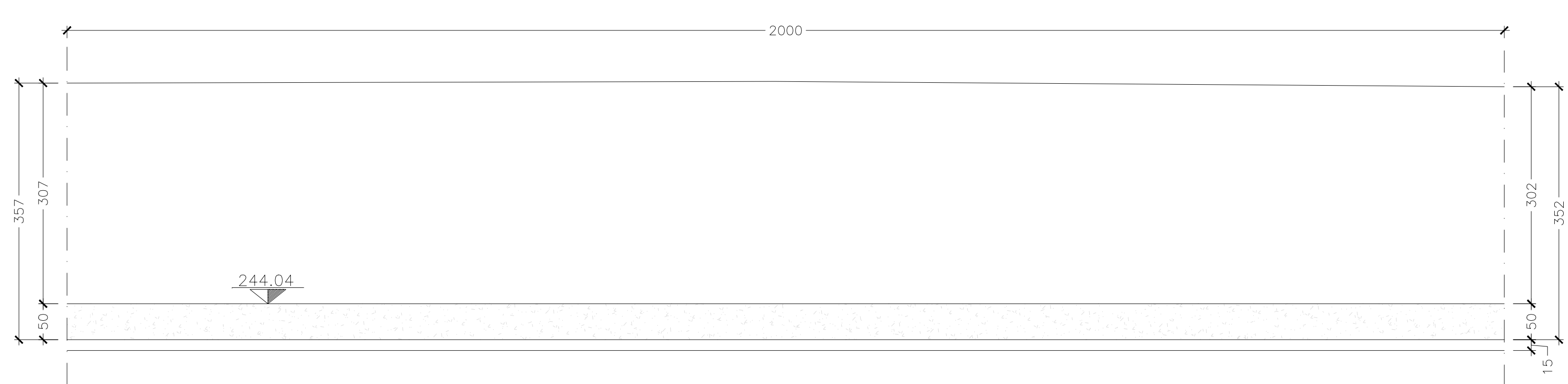
SEZIONE TRASVERSALE CONCIO H
SCALA 1:50



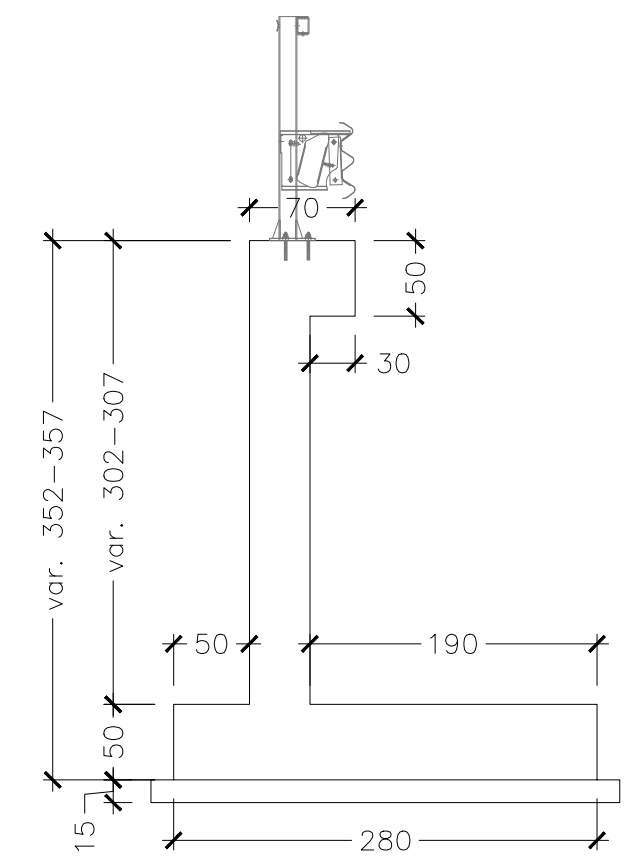
PIANTA CONCIO H
SCALA 1:50



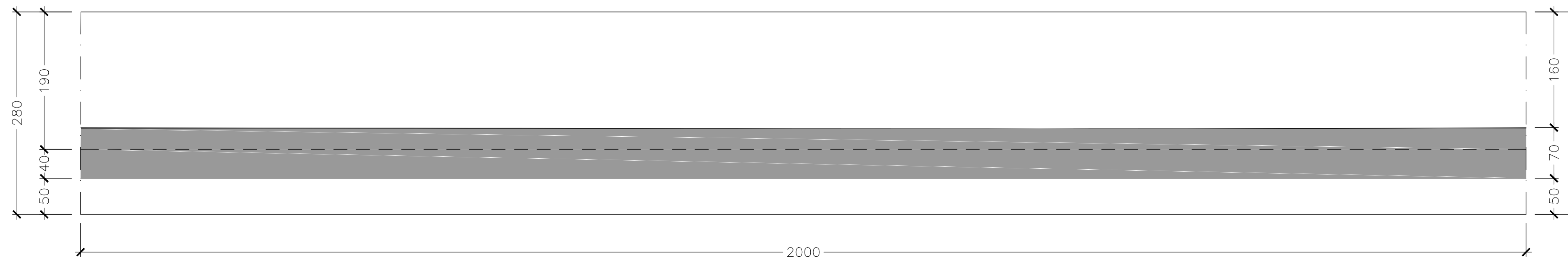
SEZIONE LONGITUDINALE CONCIO I
SCALA 1:50



SEZIONE TRASVERSALE CONCIO I
SCALA 1:50



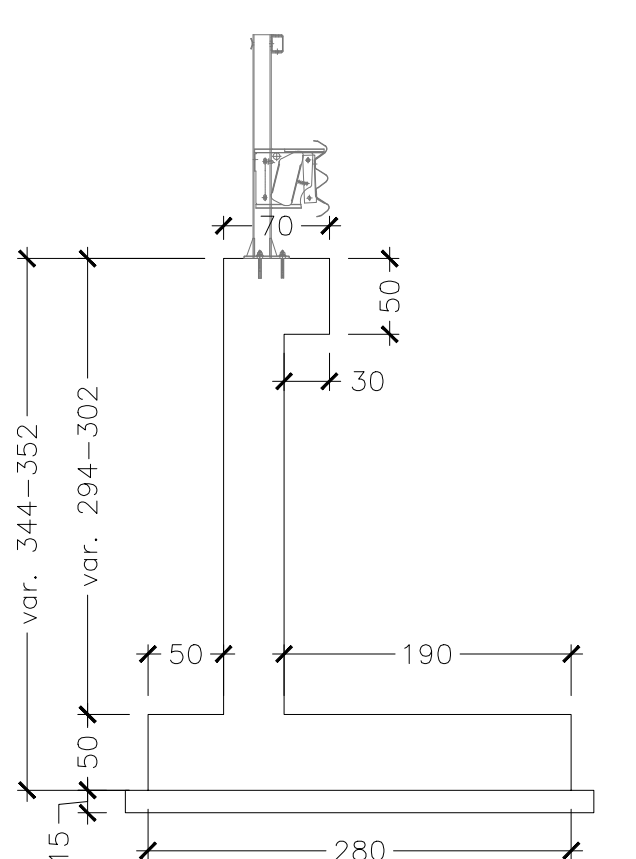
PIANTA CONCIO I
SCALA 1:50



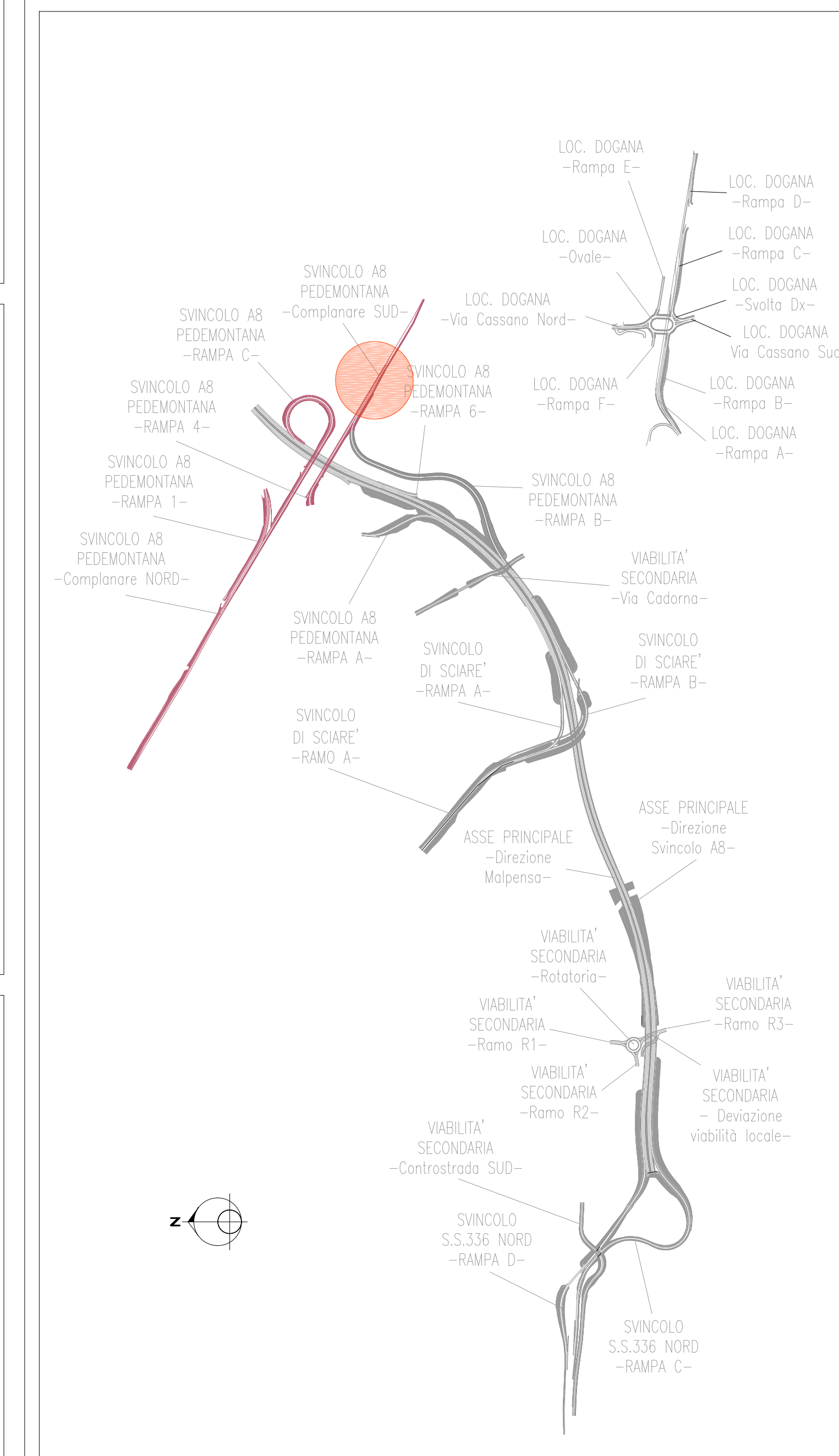
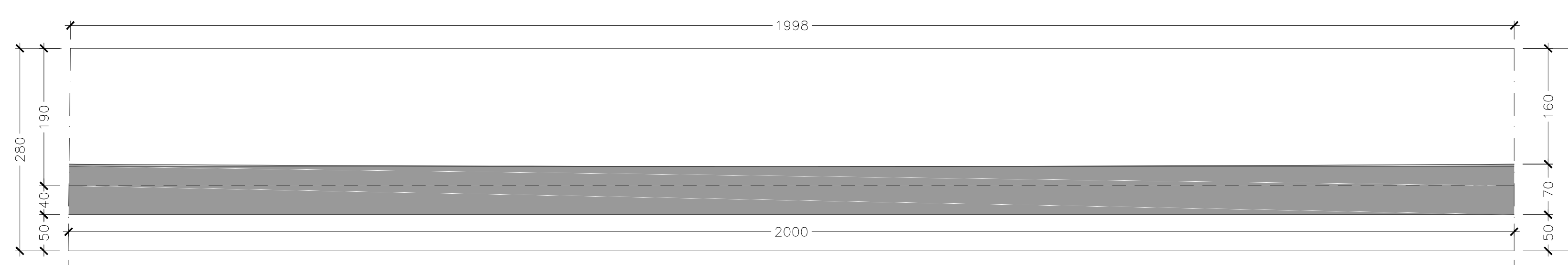
SEZIONE LONGITUDINALE CONCIO J
SCALA 1:50



SEZIONE TRASVERSALE CONCIO J
SCALA 1:50



PIANTA CONCIO J
SCALA 1:50



NUOVA S.S. 341 "GALLARATESE" - TRATTO DA SAMARATE A CONFINE
CON LA PROVINCIA DI NOVARA - TRATTO NORD
STRALCIO FUNZIONALE DAL KM 6+500 (SVINCOLO S.S. 336 NORD)
AL KM 8+844 (SVINCOLO AUTOSTRADA A8)
"BRETELLA DI GALLARATE"

PROGETTO ESECUTIVO

STUDIO CORONA Ing. Marco Spini Arch. Roberto Gatti	ING. RENATO DEL PRETE Ing. Renato Del Prete	ECOPLAN Arch. Massimo Pirelli	EG Ing. Gabriele Geronzi
UNING Ing. Marco Spini	SETAC Ing. Renato Del Prete	ARKE Arch. Massimo Pirelli	DOT. GED. DANIELO GRILLO Dot. Ged. Danilo Grillo
CAI.M. Prof. Ing. Stefano Basso	ING. LUIGI MARINELLI Ing. Luigi Marinelli	ING. GIUSEPPE ANTONI Ing. Giuseppe Antonini	ING. GIANFRANCO RANIERI Ing. Gianfranco Ranieri

I - PROGETTO STRUTTURALE: MURI DI SOSTEGNO

IF - OS69 MURI DI SOSTEGNO -
Svincolo A8/Pedemontana
Carpenteria Tav. 2 di 5

CODICE PROGETTO	NOME FILE	REVISIONE	SCALA
PROGETTO	IF08-POI050STRCP02_A.dwg		1:50
M1533	E 1801	A	

C				
B				
A	EMMISSIONE	MAGGIO 2021	ING. DANIELE BIANCHI	ING. VALERIO BIANCHI
REV.	DESCRIZIONE	DATA	REDATTO	VERIFICATO
				APPROVATO