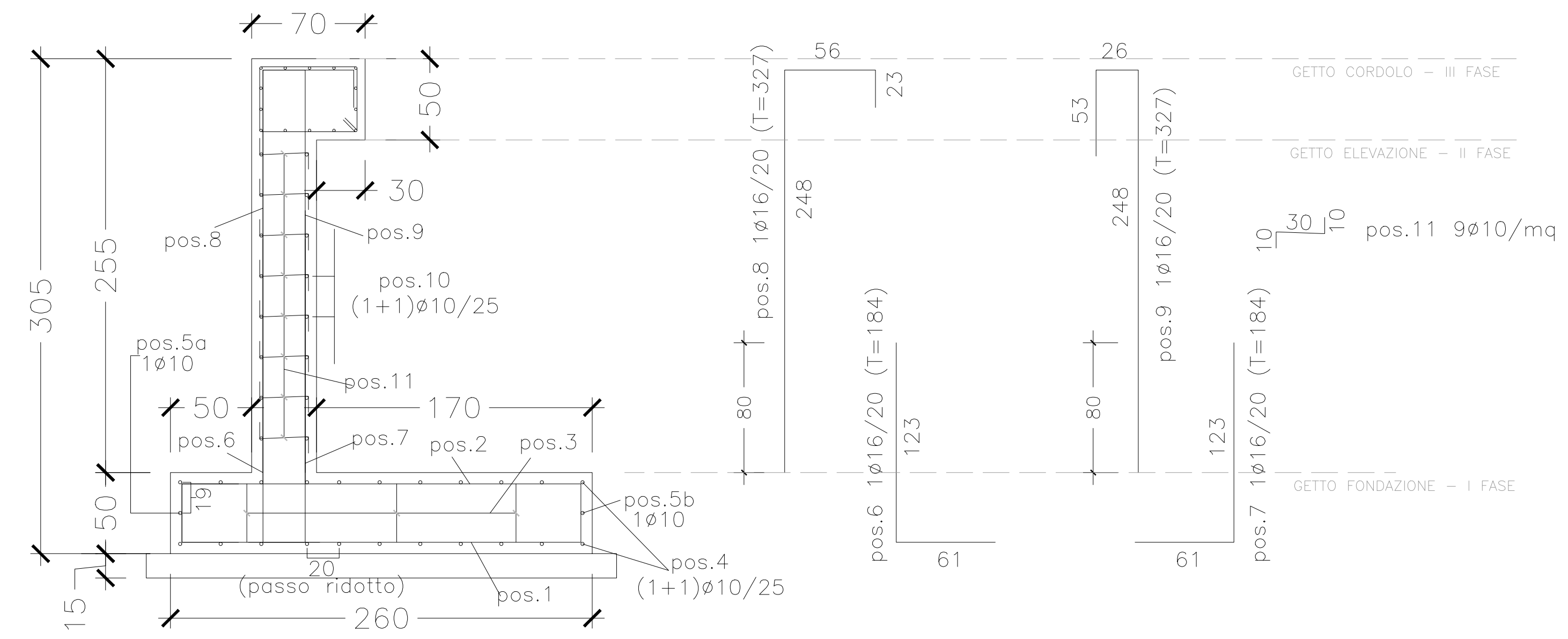
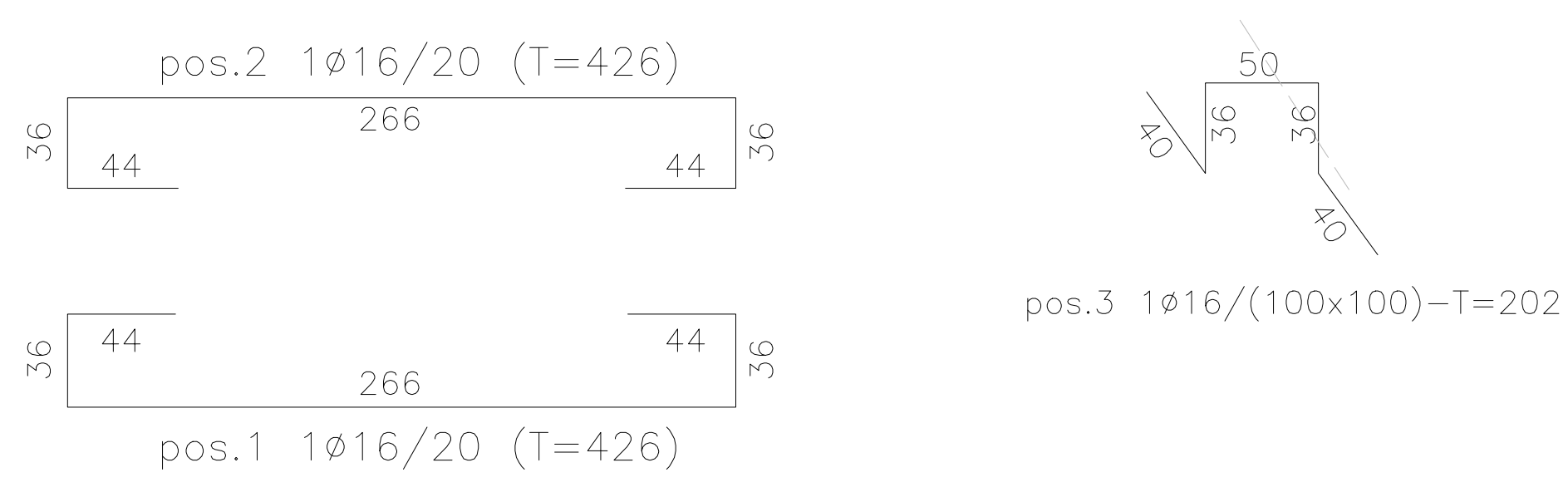
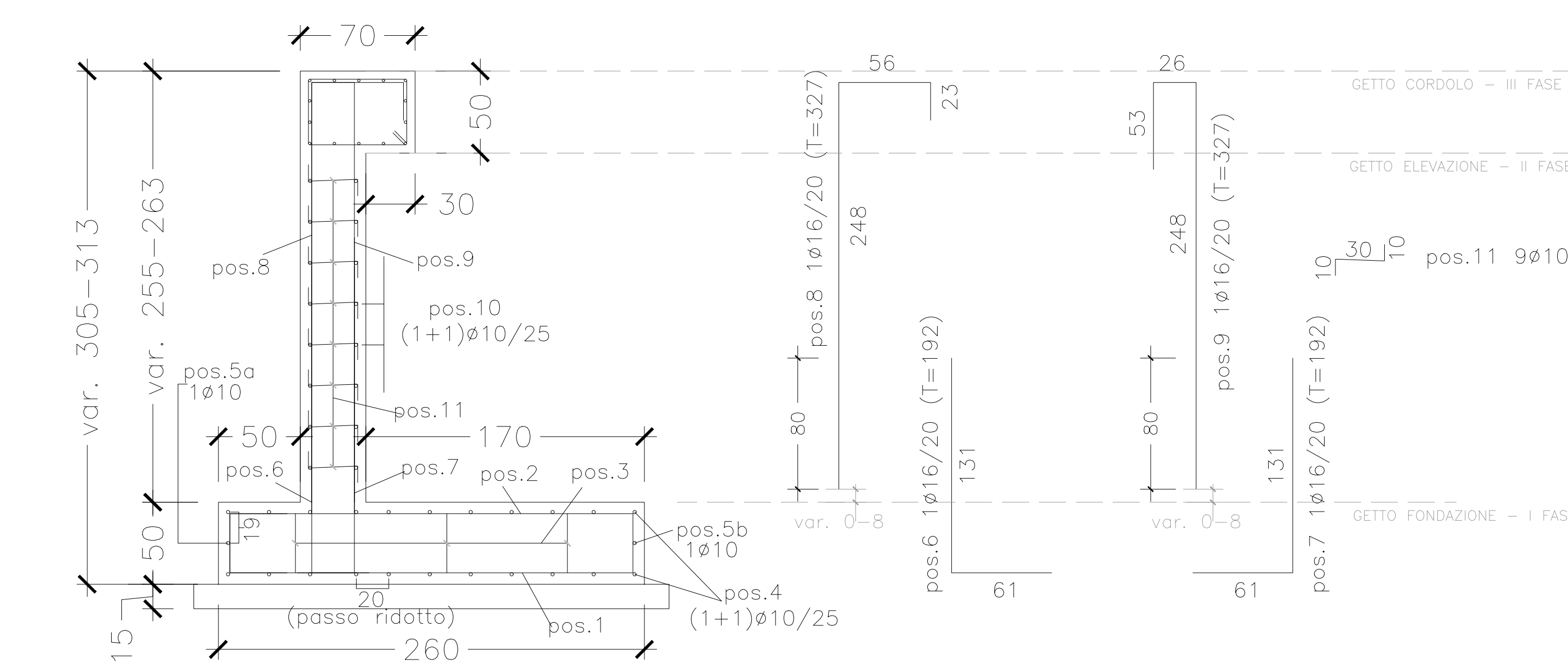
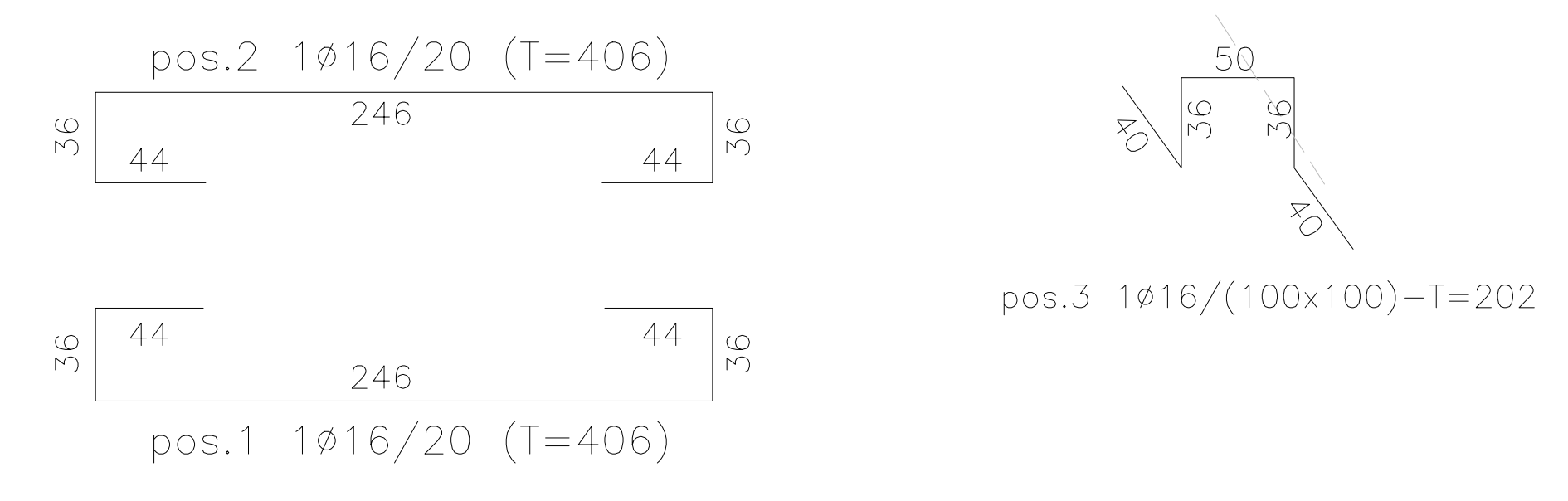


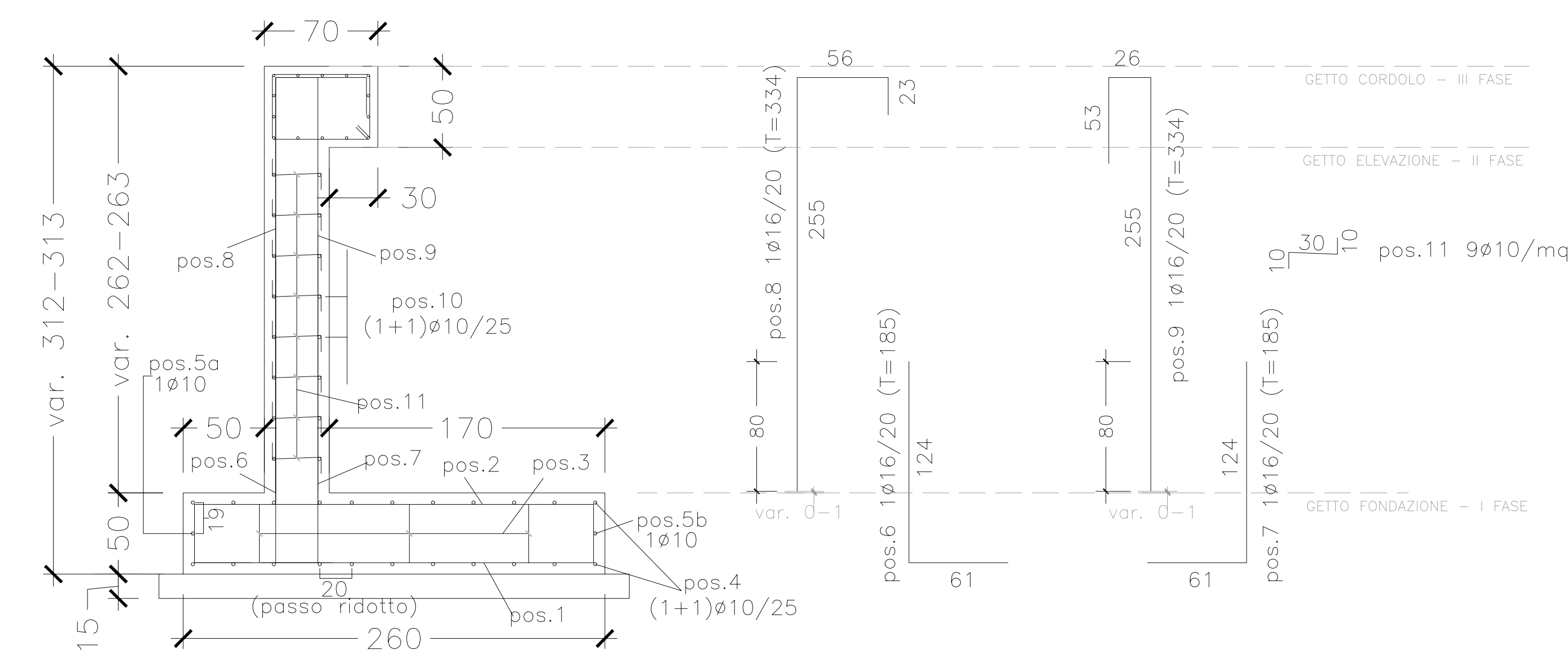
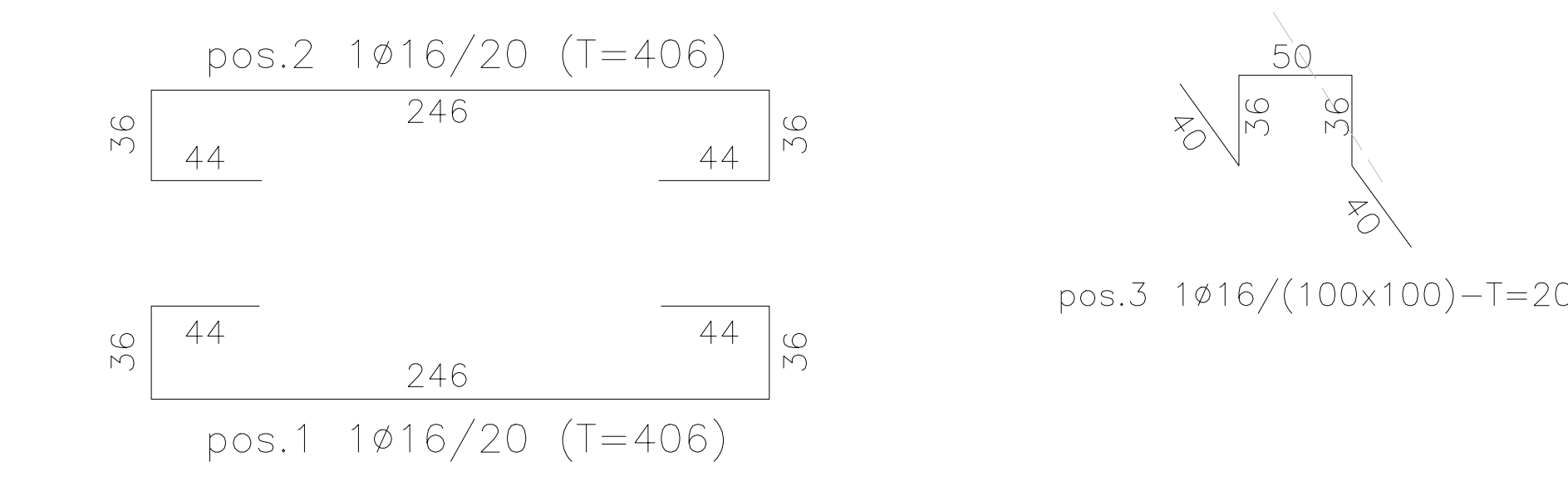
**CONCIO K**  
SCALA 1:25



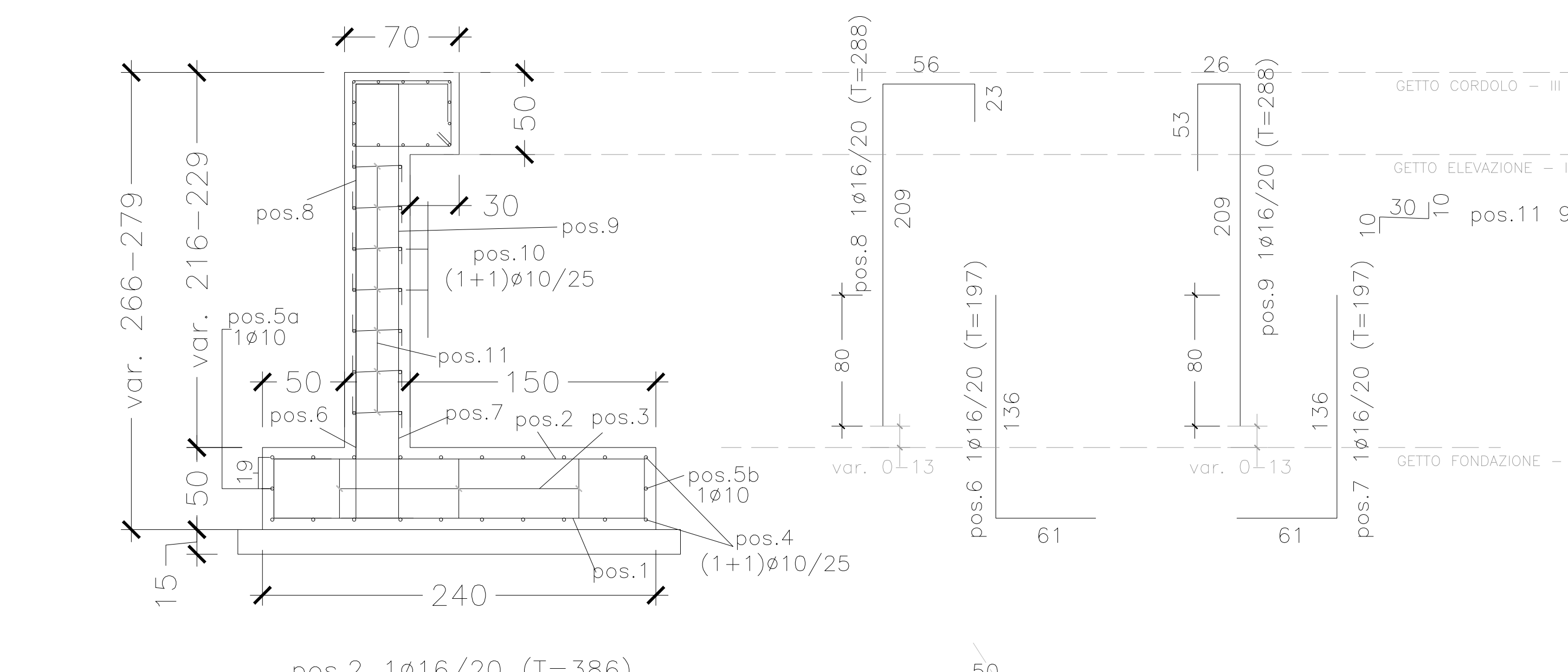
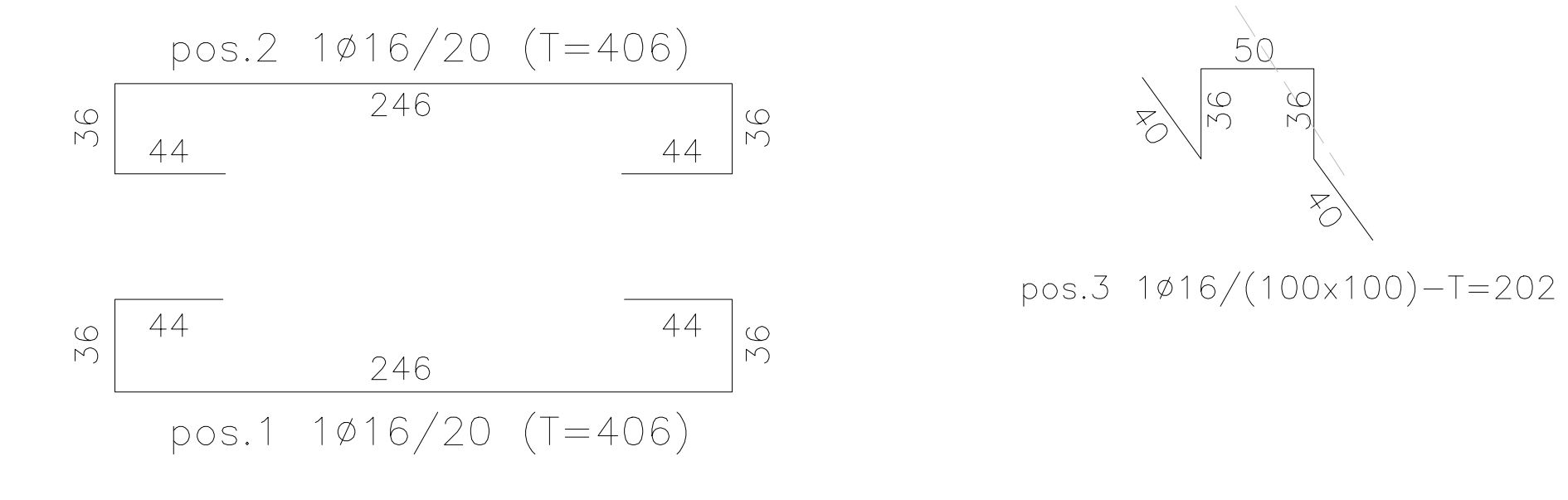
**CONCIO L**  
SCALA 1:25



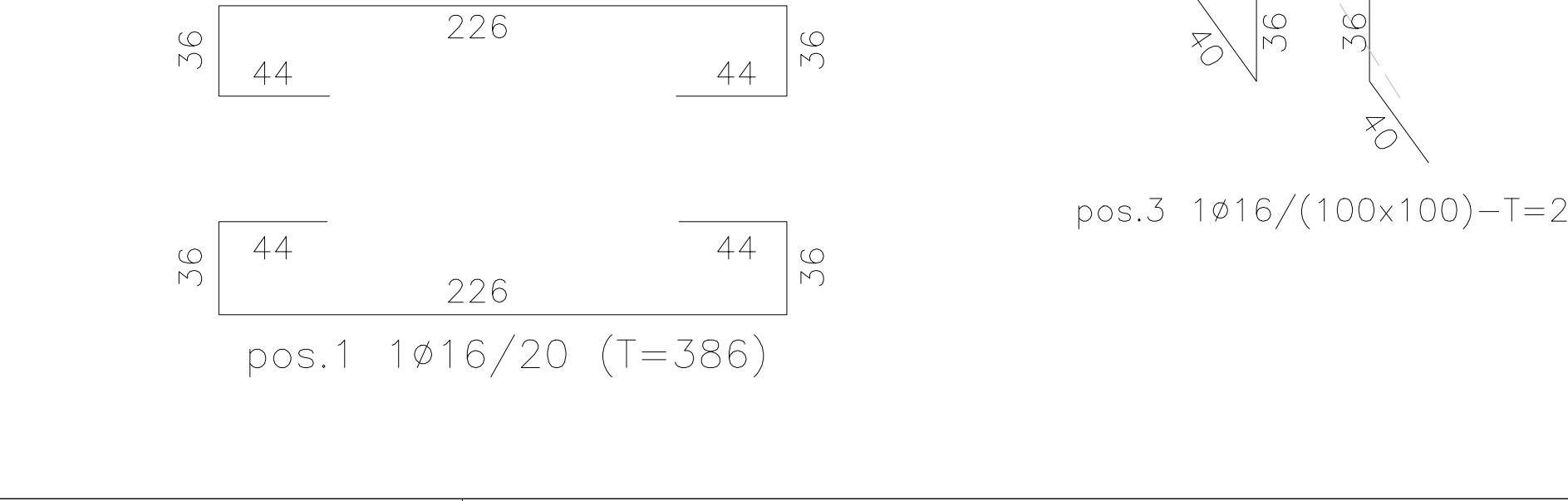
**CONCIO M**  
SCALA 1:25



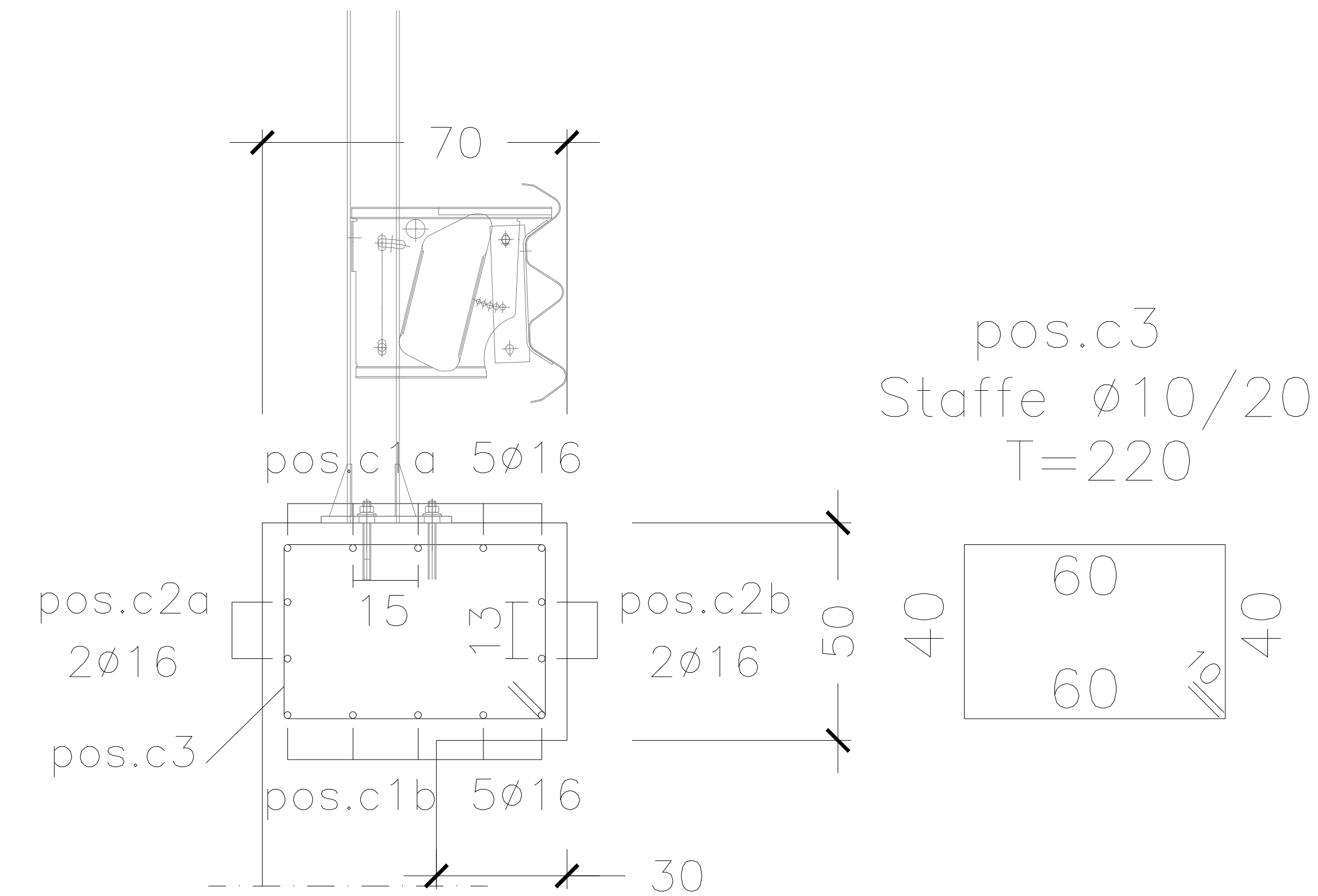
**CONCIO N**  
SCALA 1:25



**CONCIO O**  
SCALA 1:25



**Dettaglio cordolo**  
SCALA 1:10



CONCIO K H = 2.90±2.94 m						CONCIO L H = 2.55 m							
Pos.	N. Barre	Lungh. (m)	φ (mm)	Volume (mc)	Peso (Kg)	Pos.	N. Barre	Lungh. (m)	φ (mm)	Volume (mc)	Peso (Kg)		
1	100	4.26	16	0.086	7850	672.03	1	100	4.06	16	0.082	7850	640.48
2	100	4.26	16	0.086	7850	672.03	2	100	4.06	16	0.082	7850	640.48
3	60	2.02	16	0.024	7850	191.20	3	60	2.02	16	0.024	7850	191.20
4	24	20.00	10	0.038	7850	295.79	4	22	20.00	10	0.035	7850	271.14
5a	1	20.00	10	0.002	7850	12.32	5a	1	20.00	10	0.002	7850	12.32
5b	1	20.00	10	0.002	7850	12.32	5b	1	20.00	10	0.002	7850	12.32
6	100	1.88	16	0.038	7850	296.58	6	100	1.84	16	0.037	7850	290.27
7	100	1.88	16	0.038	7850	296.58	7	100	1.84	16	0.037	7850	290.27
8	100	3.62	16	0.073	7850	571.07	8	100	3.27	16	0.066	7850	515.85
9	100	3.62	16	0.073	7850	571.07	9	100	3.27	16	0.066	7850	515.85
10	20	20.00	10	0.031	7850	246.49	10	18	20.00	10	0.028	7850	221.84
11	176	0.50	10	0.007	7850	54.23	11	148	0.50	10	0.006	7850	45.60
11a	5	20.00	16	0.020	7850	157.75	11a	5	20.00	16	0.020	7850	157.75
11b	5	20.00	16	0.020	7850	157.75	11b	5	20.00	16	0.020	7850	157.75
11c	2	20.00	16	0.008	7850	63.10	11c	2	20.00	16	0.008	7850	63.10
11d	2	20.00	16	0.008	7850	63.10	11d	2	20.00	16	0.008	7850	63.10
11e	2	20.00	16	0.008	7850	63.10	11e	2	20.00	16	0.008	7850	63.10
11f	2	20.00	16	0.008	7850	63.10	11f	2	20.00	16	0.008	7850	63.10
11g	2	20.00	16	0.008	7850	63.10	11g	2	20.00	16	0.008	7850	63.10
11h	2	20.00	16	0.008	7850	63.10	11h	2	20.00	16	0.008	7850	63.10
11i	2	20.00	16	0.008	7850	63.10	11i	2	20.00	16	0.008	7850	63.10
11j	2	20.00	16	0.008	7850	63.10	11j	2	20.00	16	0.008	7850	63.10
11k	2	20.00	16	0.008	7850	63.10	11k	2	20.00	16	0.008	7850	63.10
11l	2	20.00	16	0.008	7850	63.10	11l	2	20.00	16	0.008	7850	63.10
11m	2	20.00	16	0.008	7850	63.10	11m	2	20.00	16	0.008	7850	63.10
11n	2	20.00	16	0.008	7850	63.10	11n	2	20.00	16	0.008	7850	63.10
11o	2	20.00	16	0.008	7850	63.10	11o	2	20.00	16	0.008	7850	63.10
11p	2	20.00	16	0.008	7850	63.10	11p	2	20.00	16	0.008	7850	63.10
11q	2	20.00	16	0.008	7850	63.10	11q	2	20.00	16	0.008	7850	63.10
11r	2	20.00	16	0.008	7850	63.10	11r	2	20.00	16	0.008	7850	63.10
11s	2	20.00	16	0.008	7850	63.10	11s	2	20.00	16	0.008	7850	63.10
11t	2	20.00	16	0.008	7850	63.10	11t	2	20.00	16	0.008	7850	63.10
11u	2	20.00	16	0.008	7850	63.10	11u	2	20.00	16	0.008	7850	63.10
11v	2	20.00	16	0.008	7850	63.10	11v	2	20.00	16	0.008	7850	63.10
11w	2	20.00	16	0.008	7850	63.10	11w	2	20.00	16	0.008	7850	63.10
11x	2	20.00	16	0.008	7850	63.10	11x	2	20.00	16	0.008	7850	63.10
11y	2	20.00	16	0.008	7850	63.10	11y	2	20.00	16	0.008	7850	63.10
11z	2	20.00	16	0.008	7850	63.10	11z	2	20.00	16	0.008	7850	63.10
12	100	2.20	10	0.017	7850	135.57	12	100	2.20	10	0.017	7850	135.57
PESO TOTALE ACCIAIO (Kg)						4430.53	PESO TOTALE ACCIAIO (Kg)						4186.46
VOLUME TOTALE CLS (mc)						54.38	VOLUME TOTALE CLS (mc)						49.40

CONCIO M H = 2.55±2.63 m						CONCIO N H = 3.02±3.05 m							
Pos.	N. Barre	Lungh. (m)	φ (mm)	Volume (mc)	Peso (Kg)	Pos.	N. Barre	Lungh. (m)	φ (mm)	Volume (mc)	Peso (Kg)		
1	100	4.06	16	0.082	7850	640.48	1	100	4.06	16	0.082	7850	640.48
2	100	4.06	16	0.082	7850	640.48	2	100	4.06	16	0.082	7850	640.48
3	60	2.02	16	0.024	7850	191.20	3	60	2.02	16	0.024	7850	191.20
4	22	20.00	10	0.035	7850	271.14	4	22	20.00	10	0.035	7850	271.14
5a	1	20.00	10	0.002	7850	12.32	5a	1	20.00	10	0.002	7850	12.32
5b	1	20.00	10	0.002	7850	12.32	5b	1	20.00	10	0.002	7850	12.32
6	100	1.92	16	0.039	7850	302.89	6	100	1.85	16	0.037	7850	291.84
7	100	1.92	16	0.039	7850	302.89	7	100	1.85	16	0.037	7850	291.84
8	100	3.27	16	0.066	7850	515.85	8	100	3.34	16	0.067	7850	526.90
9	100	3.27	16	0.066	7850	515.85	9	100	3.34	16	0.067	7850	526.90
10	18	20.00	10	0.028	7850	221.84	10	18	20.00	10	0.028	7850	221.84
11	154	0.50	10	0.006	7850	47.45	11	154	0.50	10	0.006	7850	47.45
11a	5	20.00	16	0.020	7850	157.75	11a	5	20.00	16	0.020	7850	157.75
11b	5	20.00	16	0.020	7850	157.75	11b	5	20.00	16	0.020	7850	157.75
11c	2	20.00	16	0.008	7850	63.10	11c	2	20.00	16	0.008	7850	63.10
11d	2	20.00	16	0.008	7850	63.10	11d	2	20.00	16	0.008	7850	63.10
11e	2	20.00	16	0.008	7850	63.10	11e	2	20.00	16	0.008	7850	63.10
11f	2	20.00	16	0.008	7850	63.10	11f	2	20.00	16	0.008	7850	63.10
11g	2	20.00	16	0.008	7850	63.10	11g	2	20.00	16	0.008	7850	63.10
11h	2	20.00	16	0.008	7850	63.10	11h	2	20.00	16	0.008	7850	63.10
11i	2	20.00	16	0.008	7850	63.10	11i	2	20.00	16	0.008	7850	63.10
11j	2	20.00	16	0.008	7850	63.10	11j	2	20.00	16	0.008	7850	63.10
11k	2	20.00	16	0.008	7850	63.10	11k	2	20.00	16	0.008	7850	63.10
11l	2	20.00	16	0.008	7850	63.10	11l	2	20.00	16	0.008	7850	63.10
11m	2	20.00	16	0.008	7850	63.10	11m	2	20.00	16	0.008	7850	63.10
11n	2	20.00	16	0.008	7850	63.10	11n	2	20.00	16	0.008	7850	63.10
11o	2	20.00	16	0.008	7850	63.10	11o	2	20.00	16	0.008	7850	63.10
11p	2	20.00	16	0.008	7850	63.10	11p	2	20.00	16	0.008	7850	63.10
11q	2	20.00	16	0.008	7850	63.10	11q	2	20.00	16	0.008	7850	63.10
11r	2	20.00	16	0.008	7850	63.10	11r	2	20.00	16	0.008	7850	63.10
11s	2	20.00	16	0.008	7850	63.10	11s	2	20.00	16	0.008	7850	63.10
11t	2	20.00	16	0.008	7850	63.10	11t	2	20.00	16	0.008	7850	63.10
11u	2	20.00	16	0.008	7850	63.10	11u	2	20.00	16	0.008	7850	63.10
11v	2	20.00	16	0.008	7850	63.10	11v	2	20.00	16	0.008	7850	63.10
11w	2	20.00	16	0.008	7850	63.10	11w	2	20.00	16	0.008	7850	63.10
11x	2	20.00	16	0.008	7850	63.10	11x	2	20.00	16	0.008	7850	63.10
11y	2	20.00	16	0.008	7850	63.10	11y	2	20.00	16	0.008	7850	63.10
11z	2	20.00	16	0.008	7850	63.10	11z	2	20.00	16	0.008	7850	63.10
12	100	2.20	10	0.017	7850	135.57	12	100	2.20	10	0.017	7850	135.57
PESO TOTALE ACCIAIO (Kg)						4213.54	PESO TOTALE ACCIAIO (Kg)						4213.54
VOLUME TOTALE CLS (mc)						49.72	VOLUME TOTALE CLS (mc)						50.02

CONCIO O H = 2.16±2.29 m						
Pos.	N. Barre	Lungh. (m)	φ (mm)	Volume (mc)	Peso (Kg)	
1	100	3.86	16	0.078	7850	608.93
2	100	3.86	16	0.078	7850	608.93
3	60	2.02	16	0.024	7850	191.20
4	20	20.00	10	0.031	7850	246.49
5a	1	20.00	10	0.002	7850	12.32
5b	1	20.00	10	0.002	7850	12.32
6	100	1.97	16	0.040	7850	310.77
7	100	1.97	16	0.040	7850	310.77
8	100	2.88	16	0.058	7850	454.33
9	100	2.88	16	0.058	7850	454.33
10	16	20.00	10	0.025	7850	197.19
11	129	0.50	10	0.005	7850	39.75
11a	5	20.00	16	0.020	7850	157.75
11b	5	20.00</				