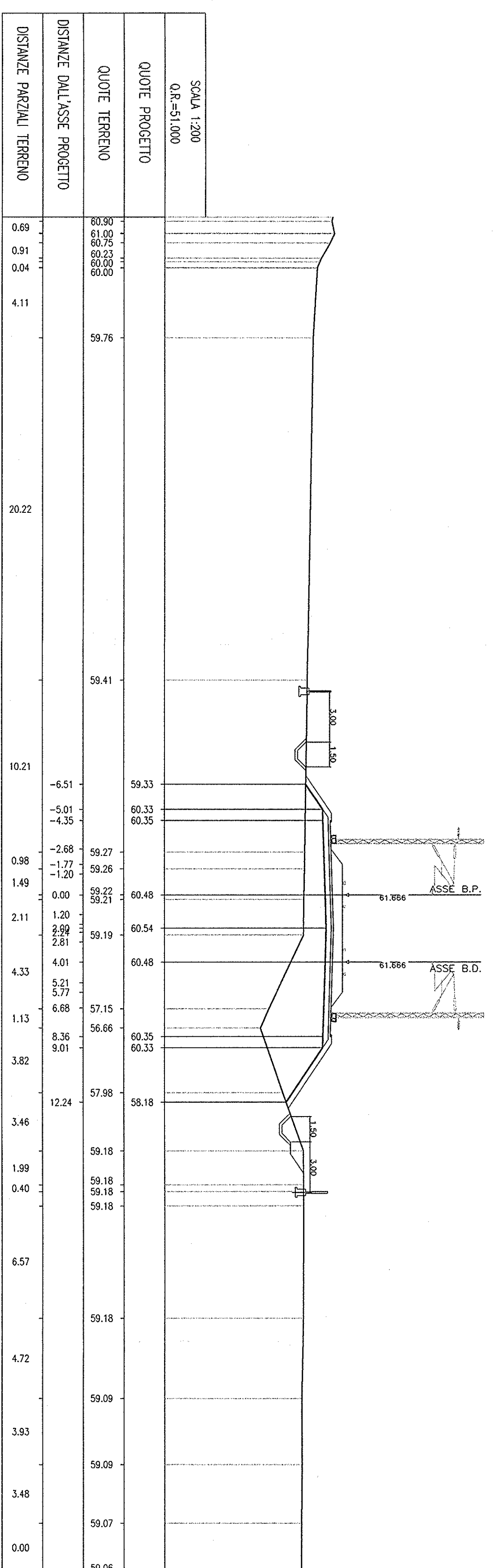
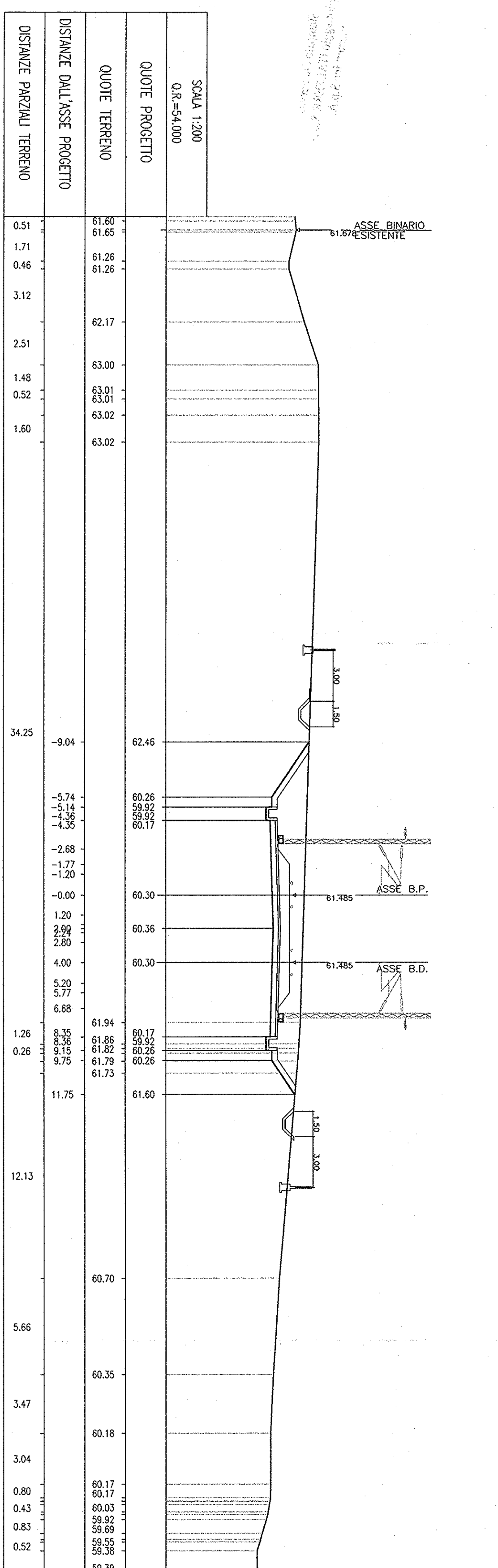


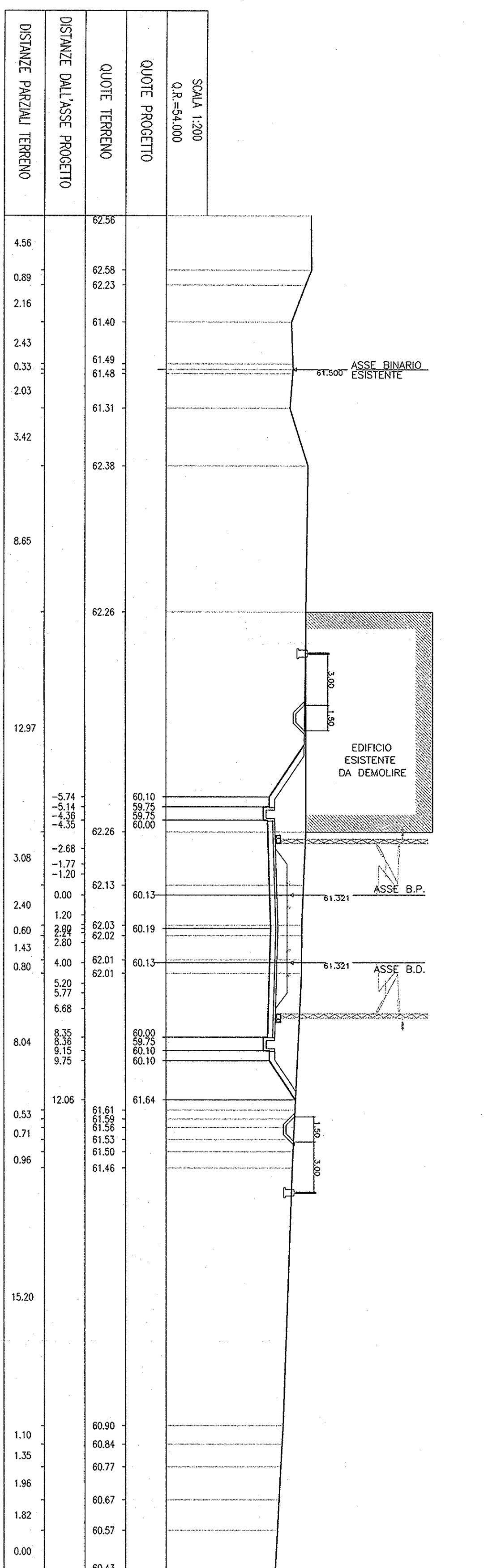
SEZ. N° 113  
PROGRESSIVA=15+100,000



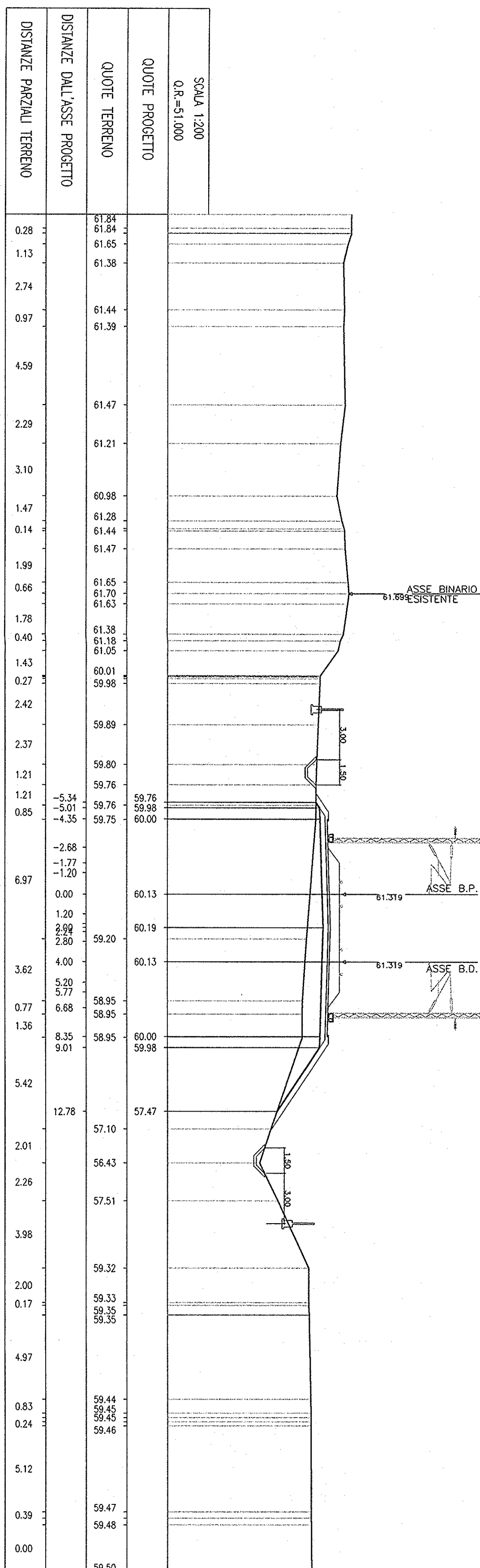
SEZ. N° 114  
PROGRESSIVA=15+200,000



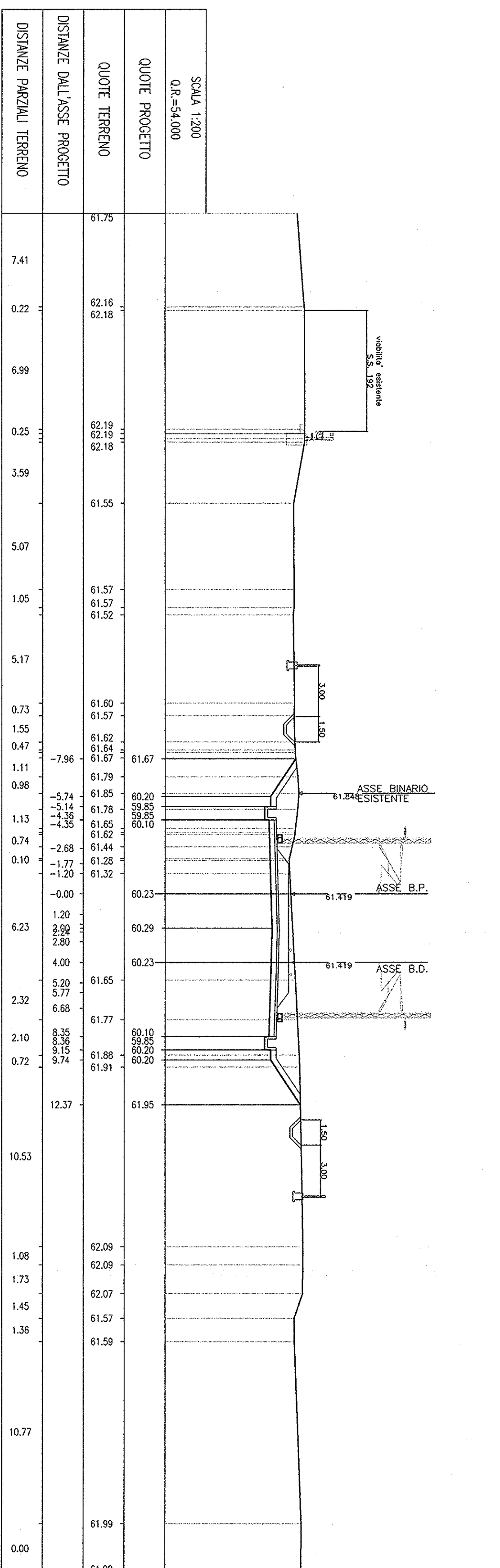
SEZ. N° 115  
PROGRESSIVA=15+300,000



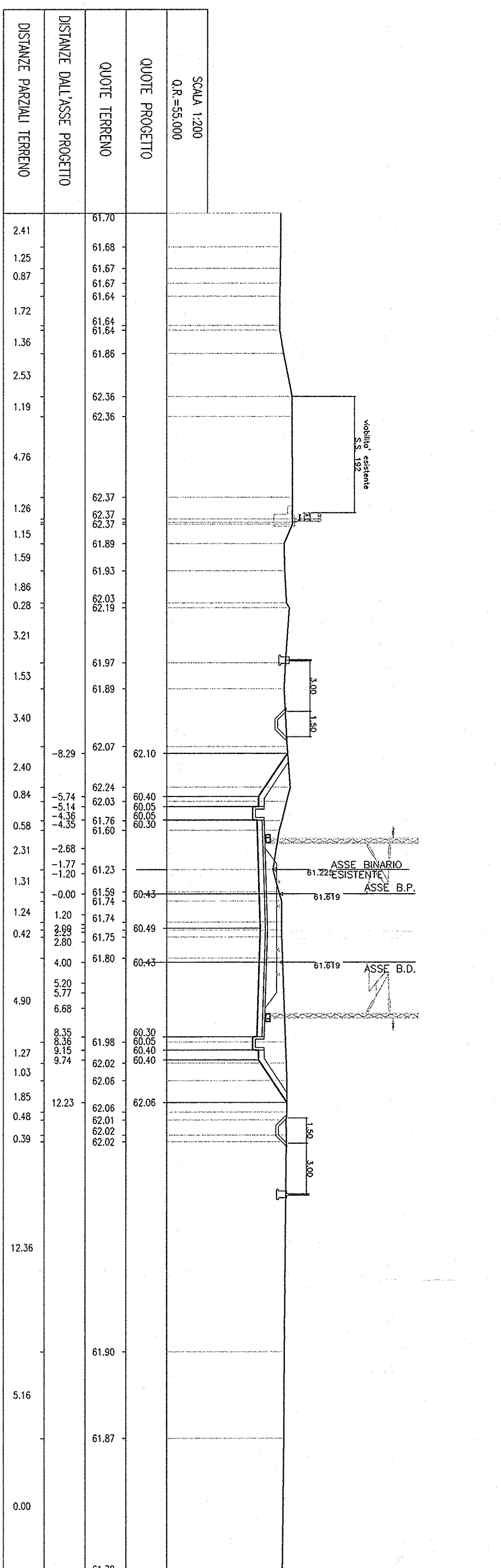
SEZ. N° 116  
PROGRESSIVA=15+400,000



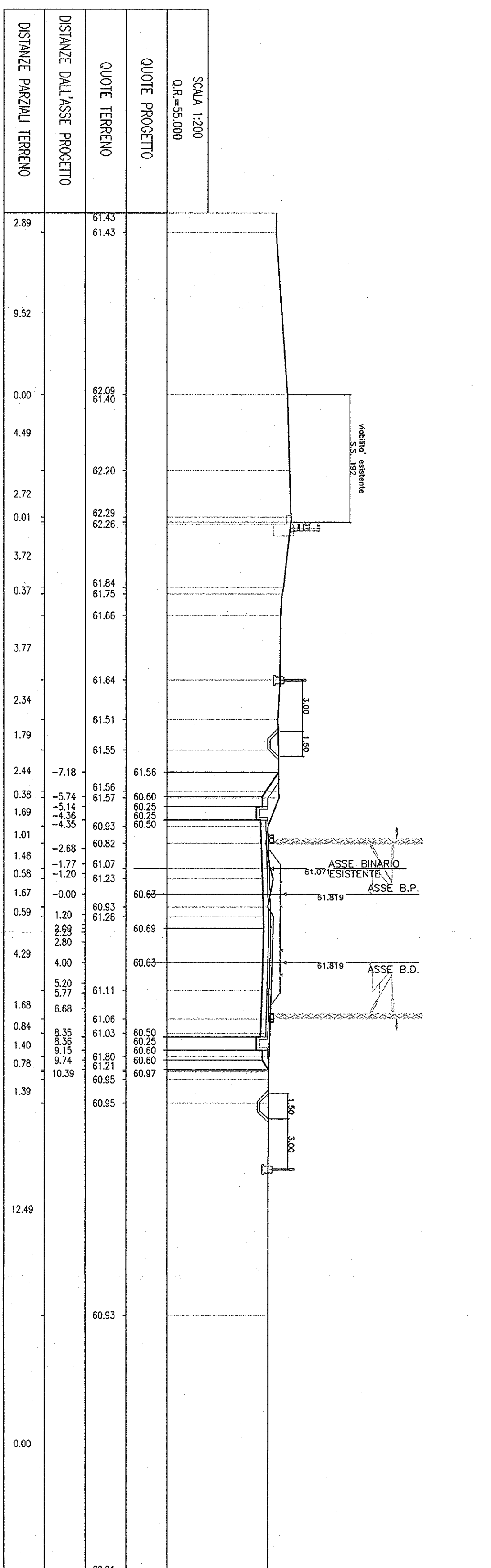
SEZ. N° 117  
PROGRESSIVA=15+500,000



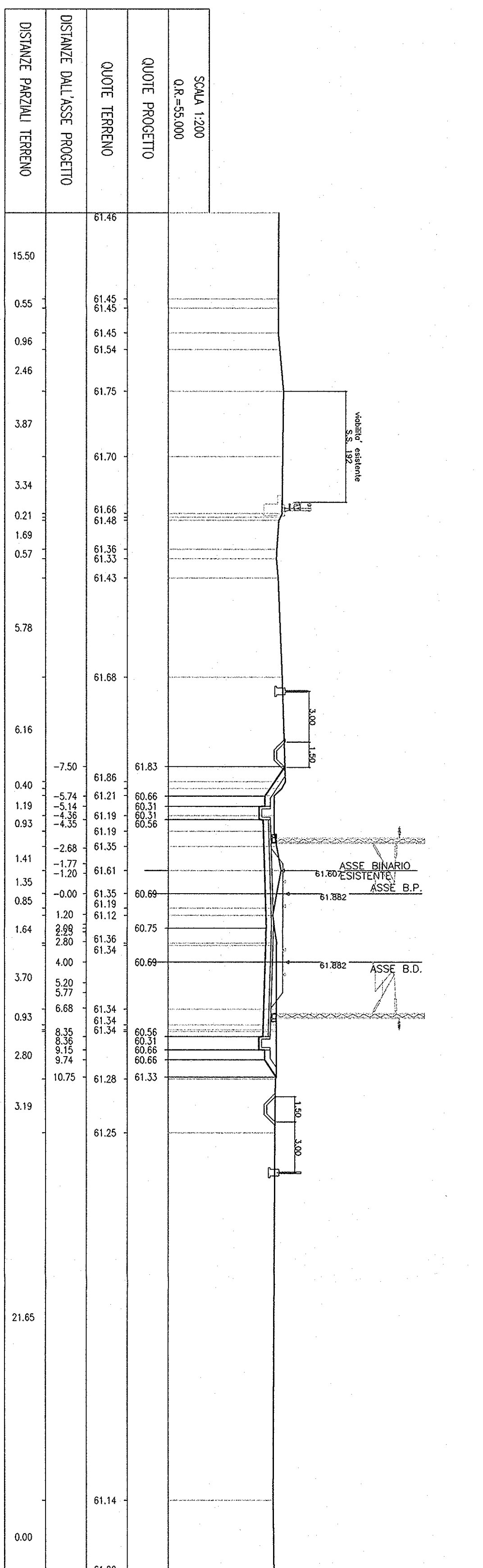
SEZ. N° 118  
PROGRESSIVA=15+700,000



SEZ. N° 119  
PROGRESSIVA=15+900,000



SEZ. N° 120  
PROGRESSIVA=16+100,000



COMITENTE: **IRPI** Infrastrutture ferroviarie italiane - Gruppo Ferrovie dello Stato

PROGETTO: **ITALFERRA** Gruppo Ferrovie dello Stato

PROGETTO: **INFRASTRUTTURE FERROVIARIE STRATEGICHE DEFINITE DALLA LEGGE OBBIETTIVO N. 443/01**

PROGETTO PRELIMINARE

NUOVO COLLEGAMENTO PALERMO - CATANIA  
RADDOPPIO DELLA TRATTA BICOCCA-CATENANUOVA

Sezioni trasversali di progetto

TOV. 15/41

SCALE: 1:200

COMMESSA	LOTTO	FASE	ENTE	TIPO DOC.	OPERANDI/PRIMA	PROGR.	REV.
RS1/1	01	R	79	M9	1/F0/0/1	015	A

RAI - Direzione Regionale Palermo  
Cant. Ing. Danilo Abovini