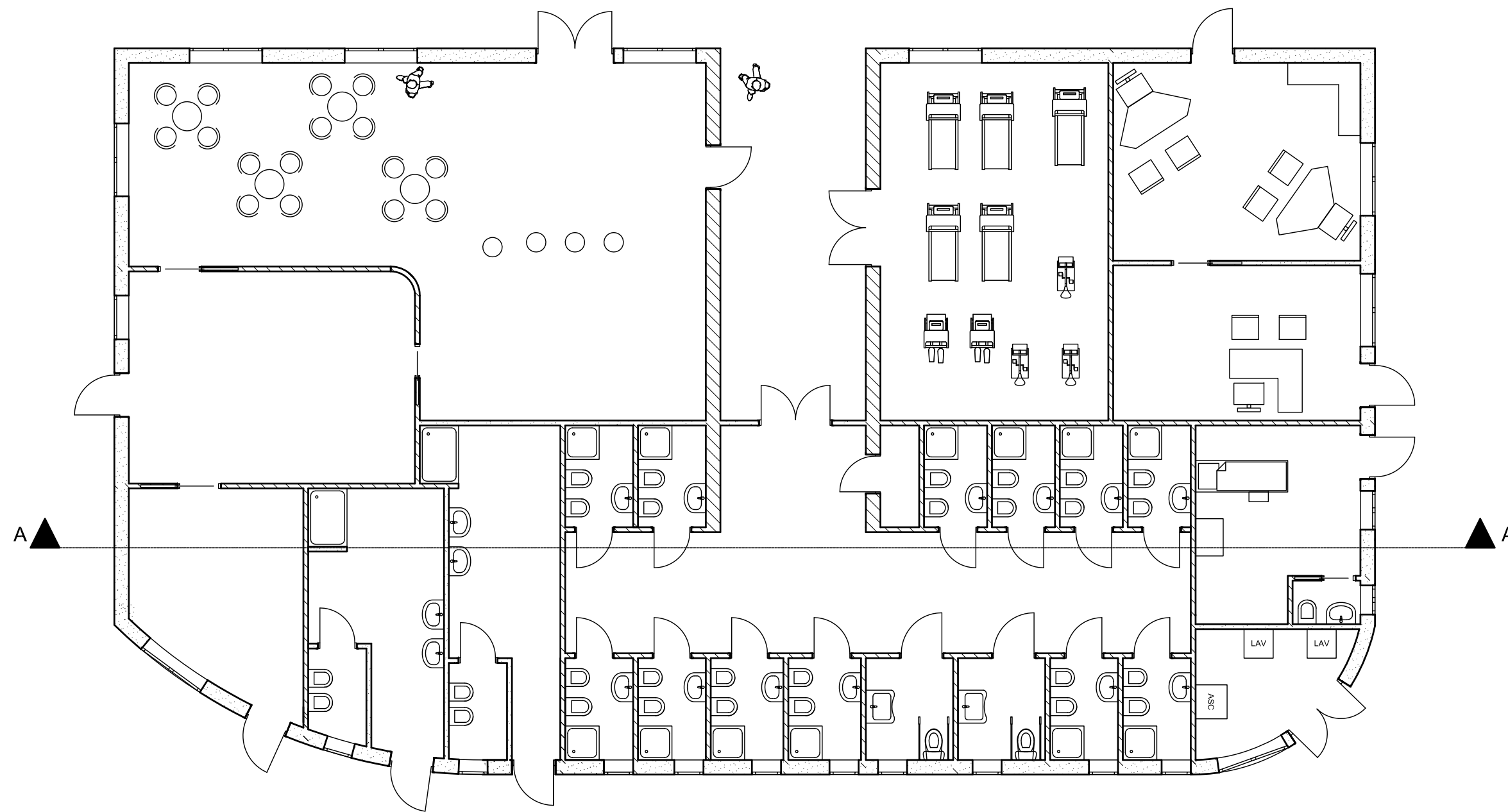
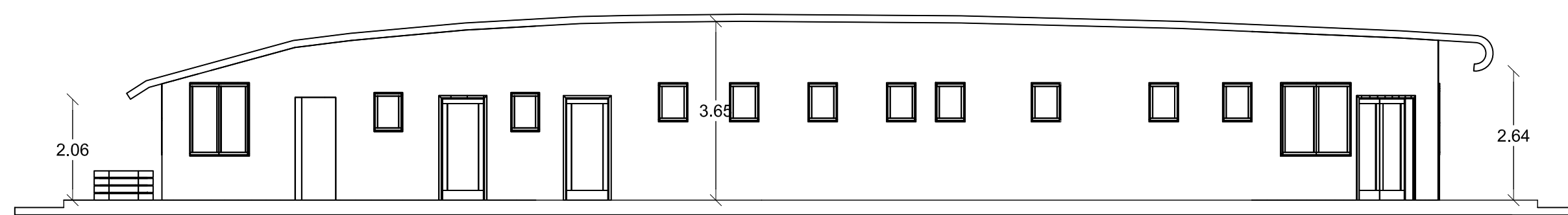


Pianta arredata



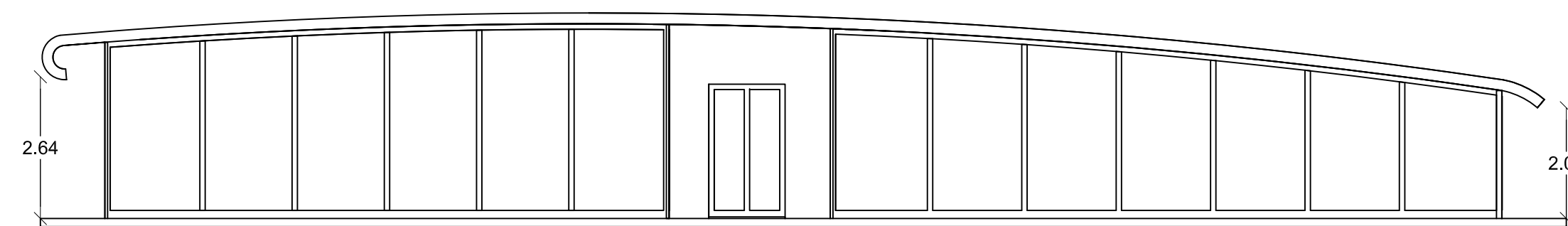
Prospetto laterale



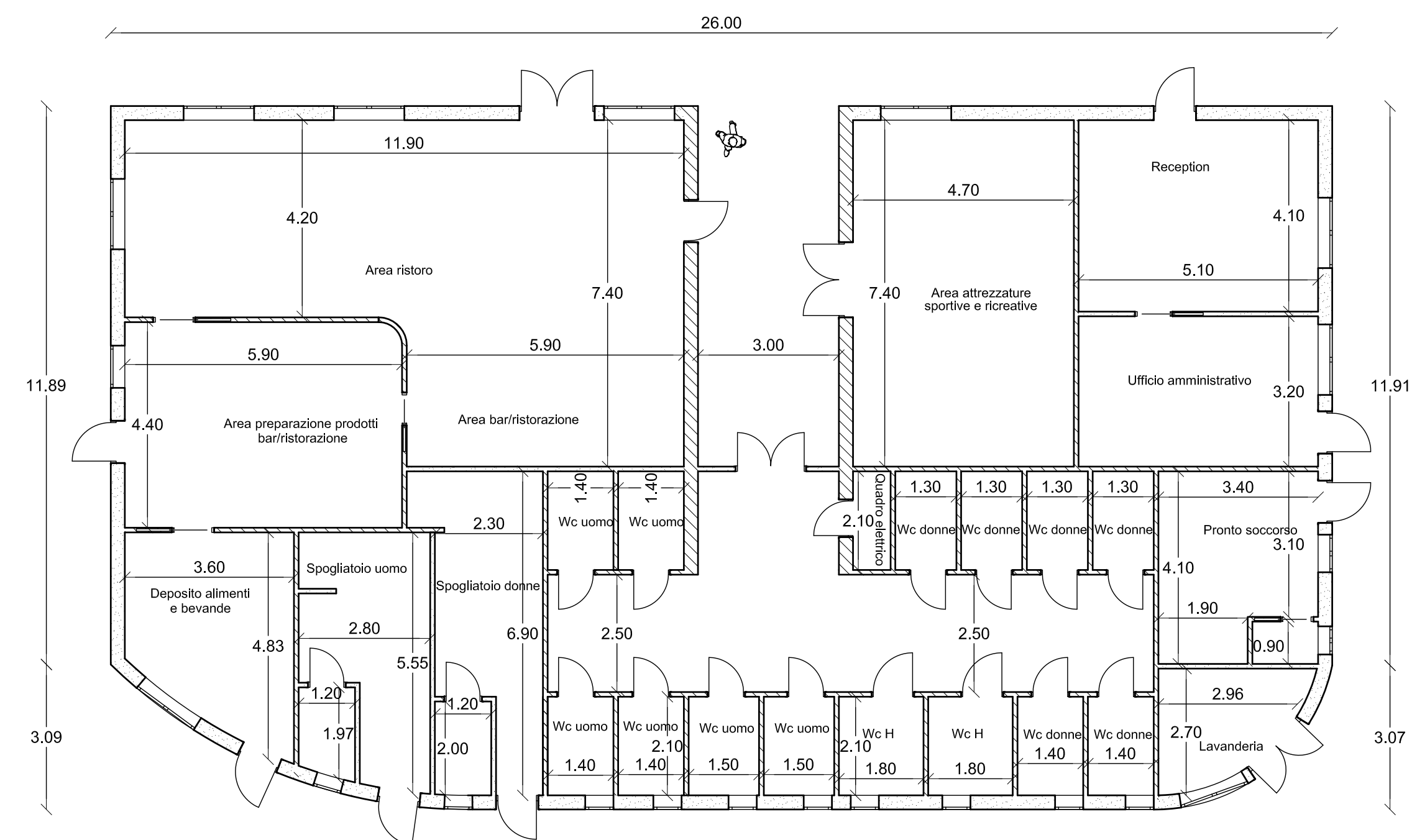
Rendering



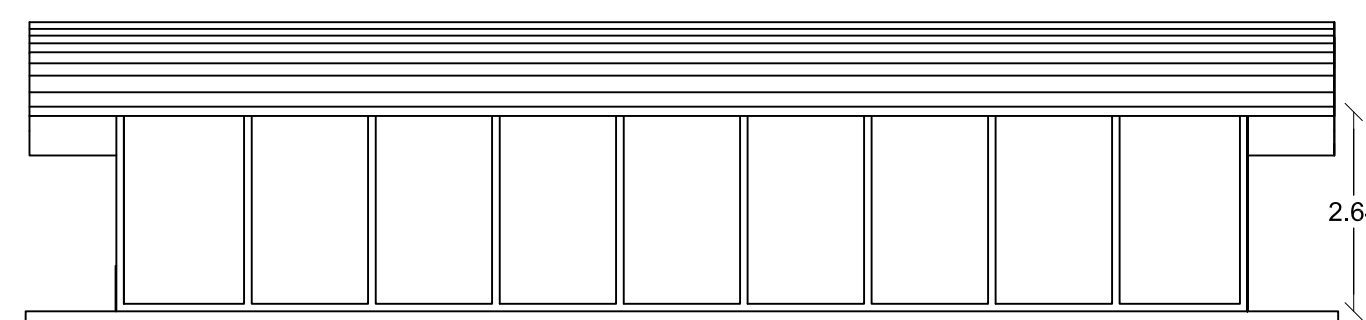
Prospetto frontale



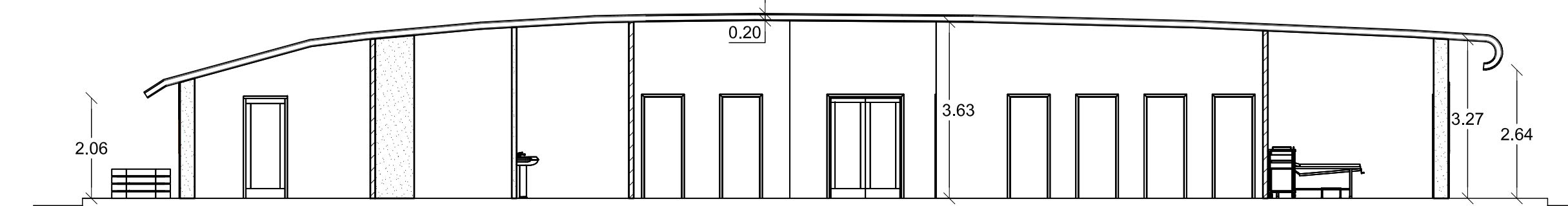
Pianta quotata con destinazione d'uso



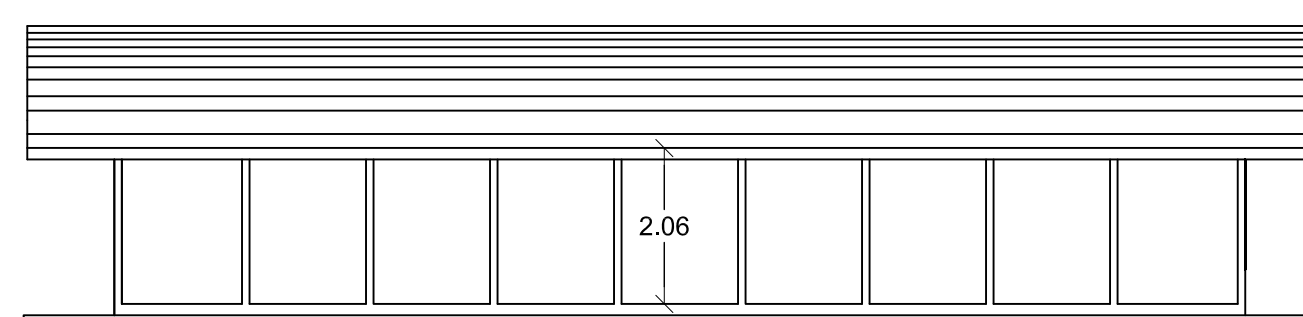
Prospetto lato mare



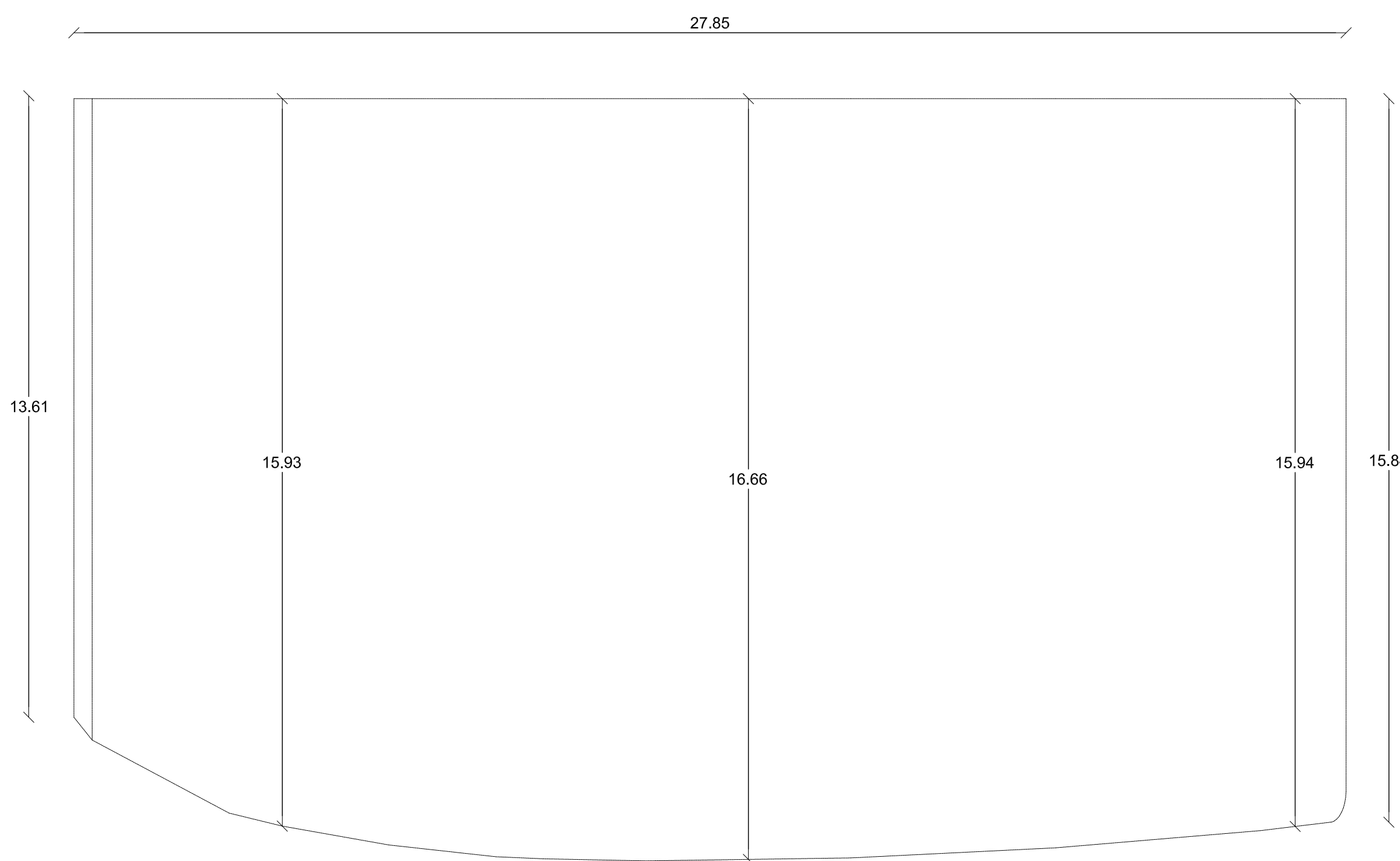
Sezione A - A



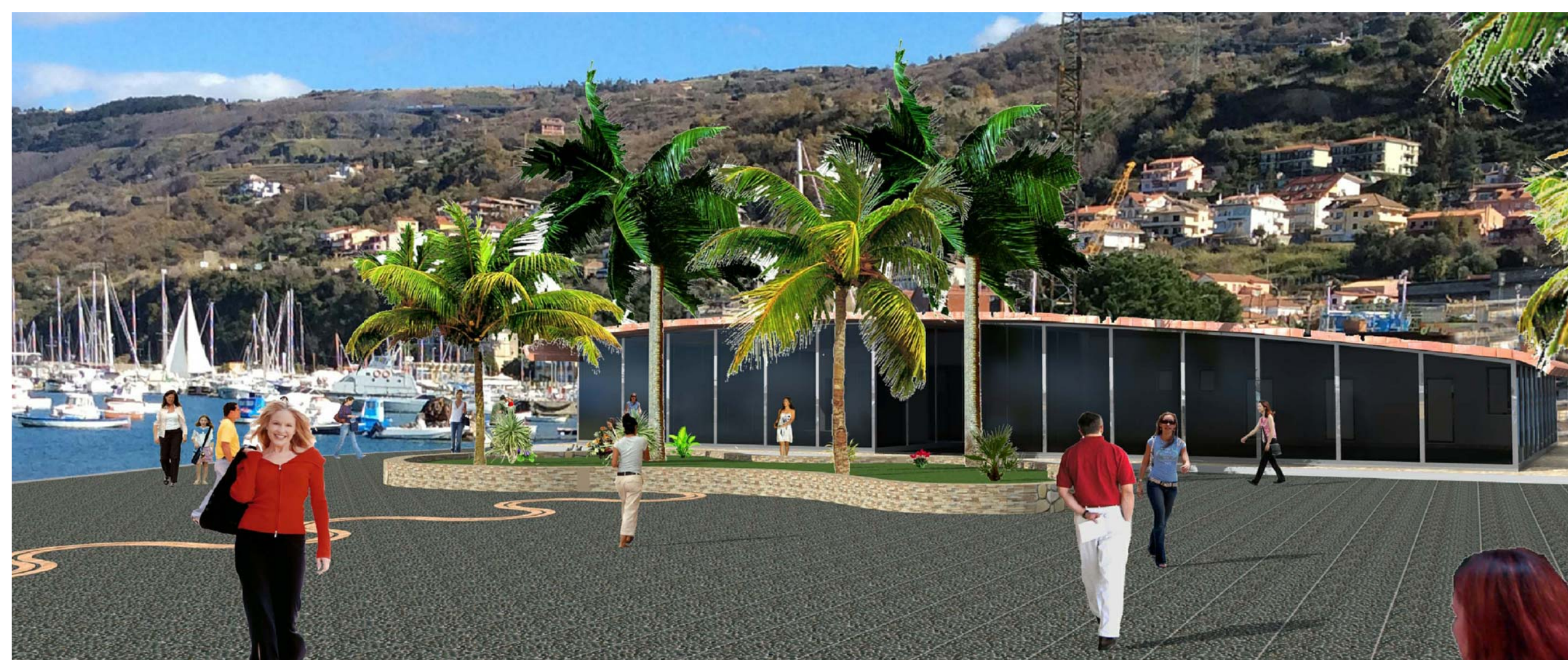
Prospetto Via Cristoforo Colombo



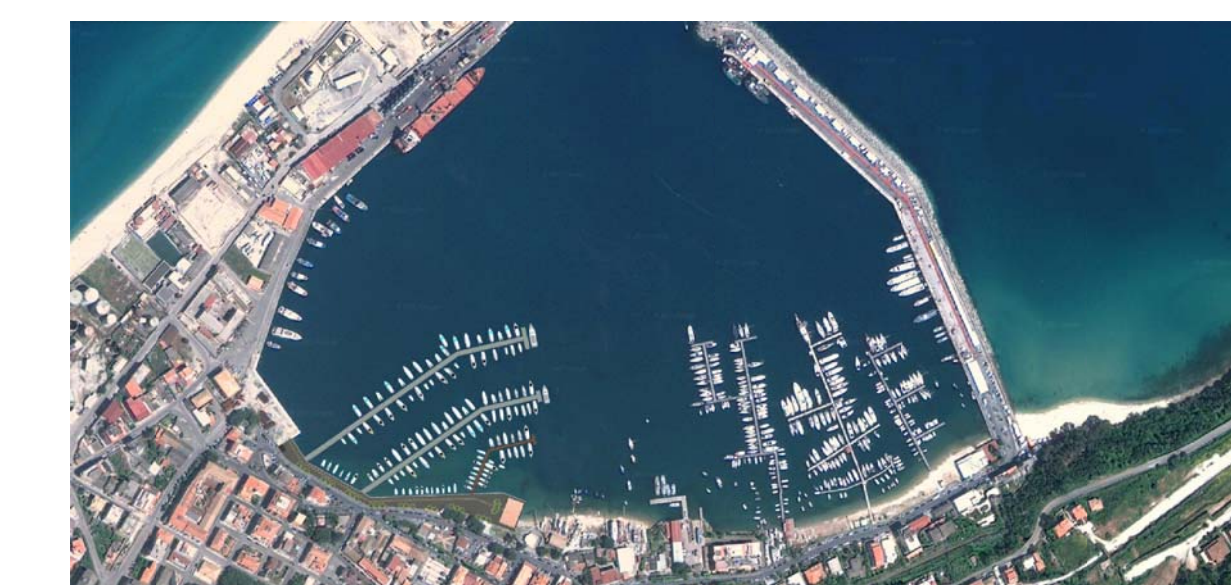
Pianta copertura



Rendering



CADI
s.r.l.



Porto Turistico "Marina Resort"

PROGETTO DEFINITIVO

Elaborato:
**PIANTE - SEZIONI - PROSPETTI E PARTICOLARI COSTRUTTIVI
EDIFICIO UFFICI/SERVIZI**

Tav.
T11
Scala: 1:100

I progettisti:
Ing. Gianluca CANTISANI
Ing. Alberto BORSANI

Data: Febbraio 2015 Revisioni: