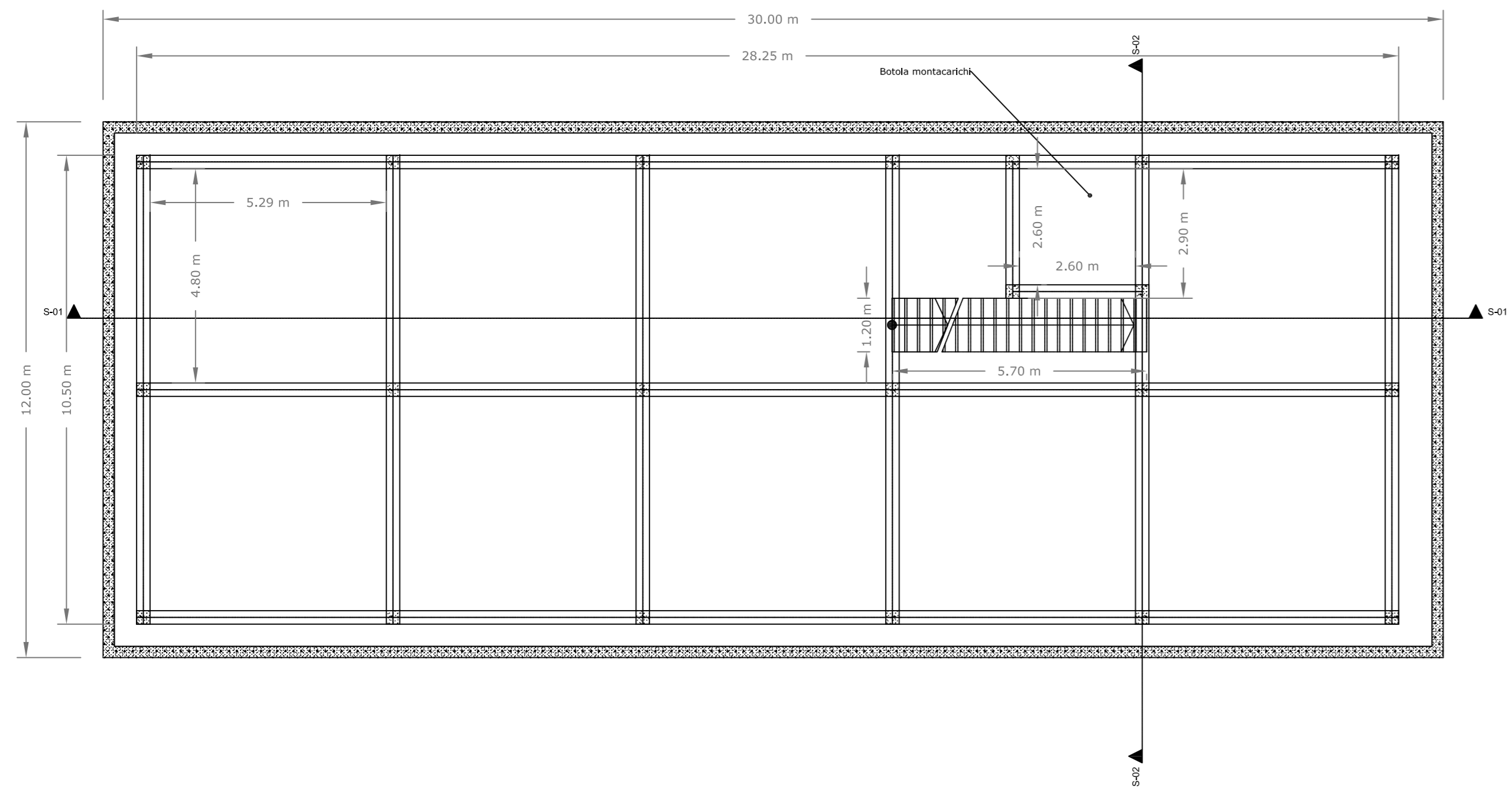
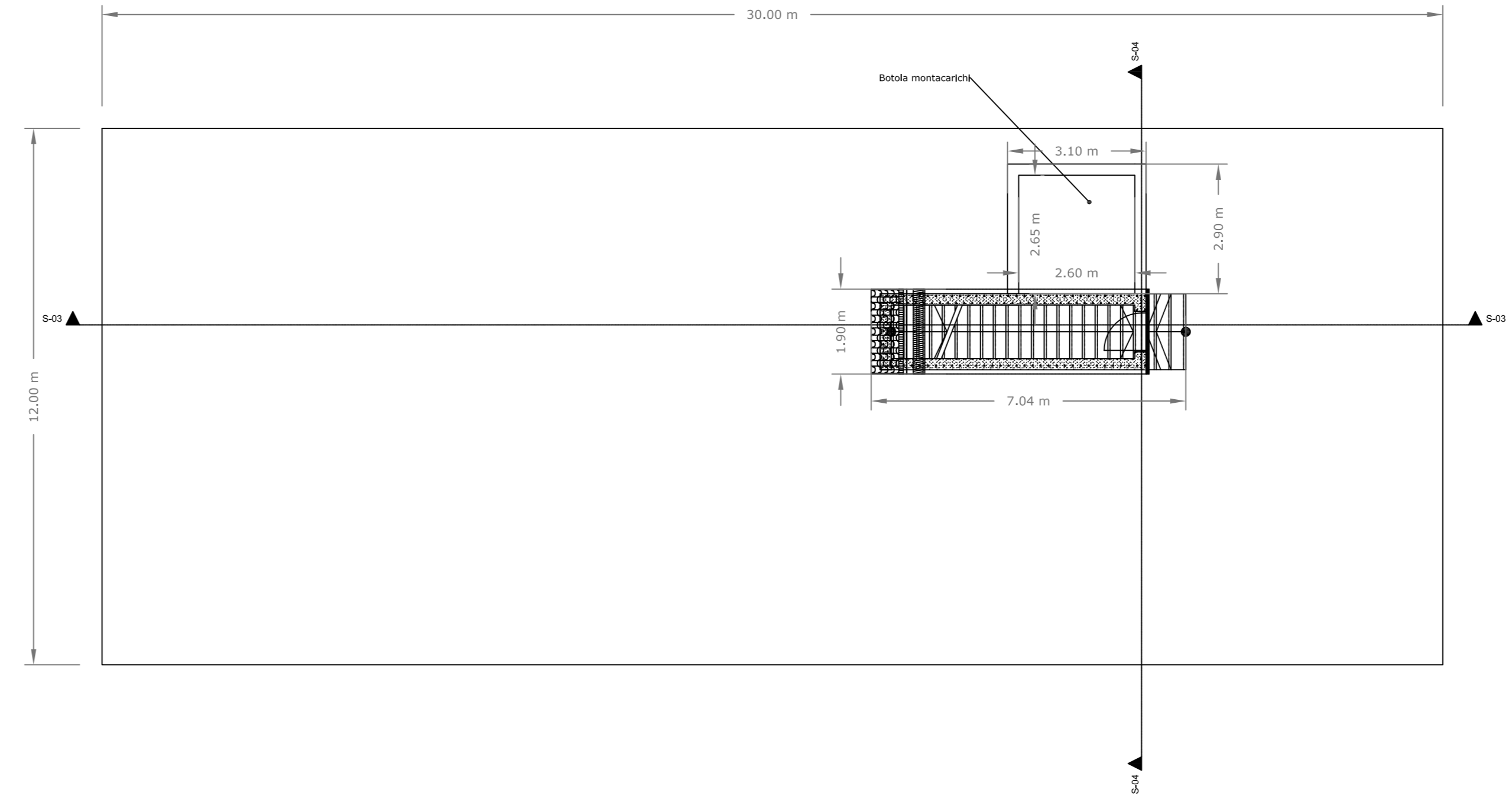


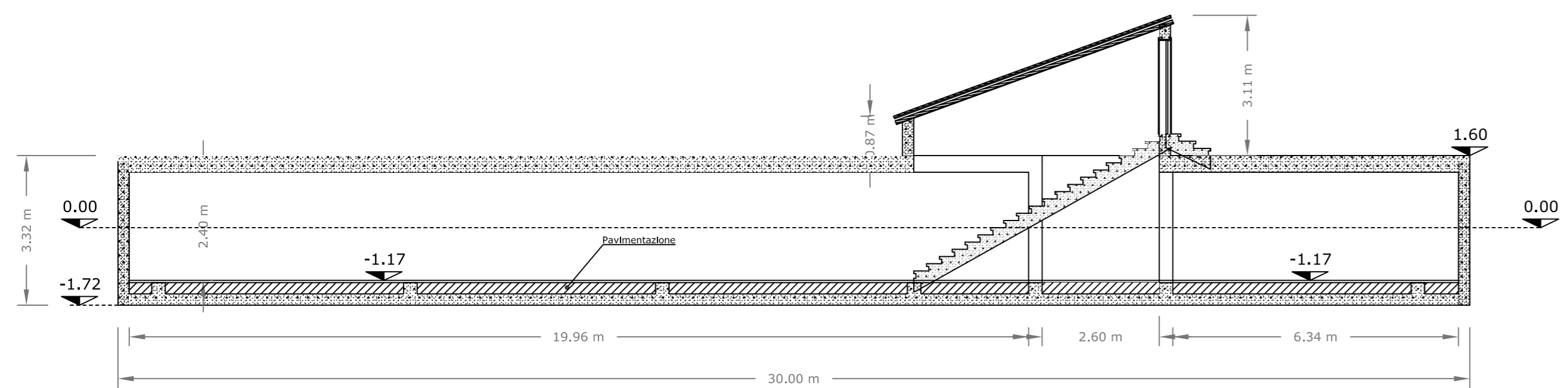
**PIANTA SEMINTERRATO DEPOSITO-MAGAZZINO**  
SCALA 1:100



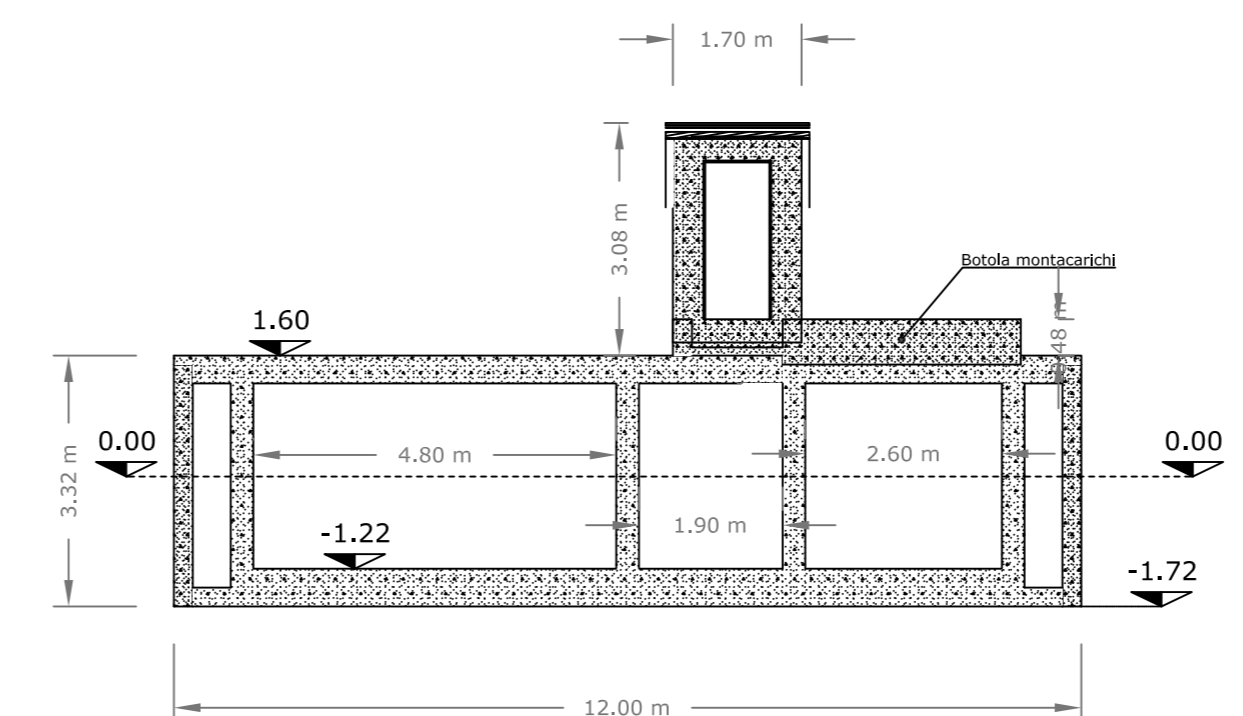
**PIANTA PIANO BANCHINA DEPOSITO-MAGAZZINO**  
SCALA 1:100



**SEZIONE "S-01" DEPOSITO-MAGAZZINO**  
SCALA 1:100



**SEZIONE "S-02" DEPOSITO-MAGAZZINO**  
SCALA 1:100



CADI s.r.l.



Porto Turistico "Marina Resort"

PROGETTO DEFINITIVO

Elaborato:  
**DEPOSITO-MAGAZZINO INTERRATO - PIANTE E SEZIONI**

Tav.  
**T14**  
Scala: 1:100

I progettisti:  
Ing. Gianluca CANTISANI  
Ing. Alberto BORSANI

Data: Febbraio 2015	Revisioni:			
---------------------	------------	--	--	--