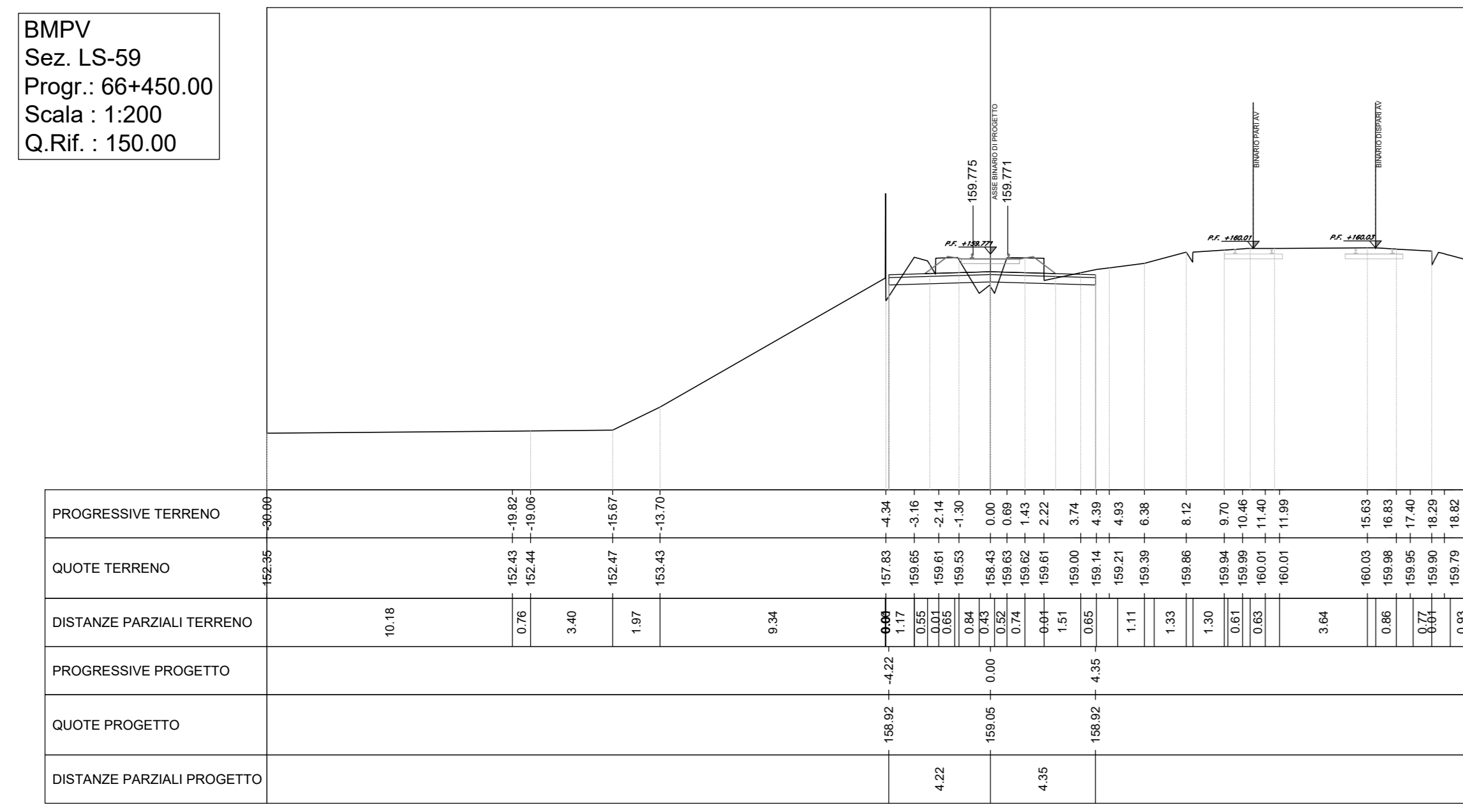
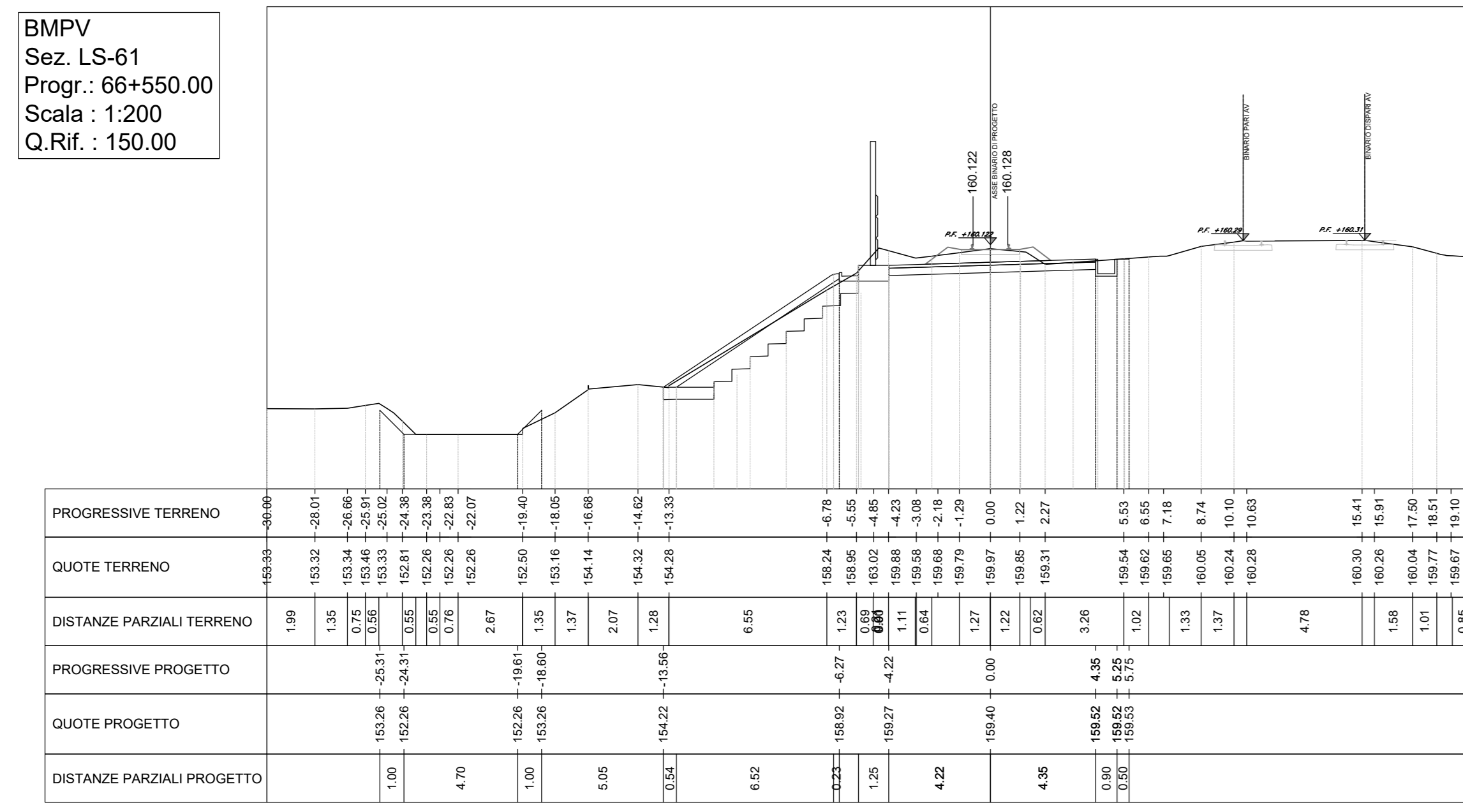


BMPV
Sez. LS-59
Prog.: 66+450.00
Scala: 1:200
Q.Rif.: 150.00



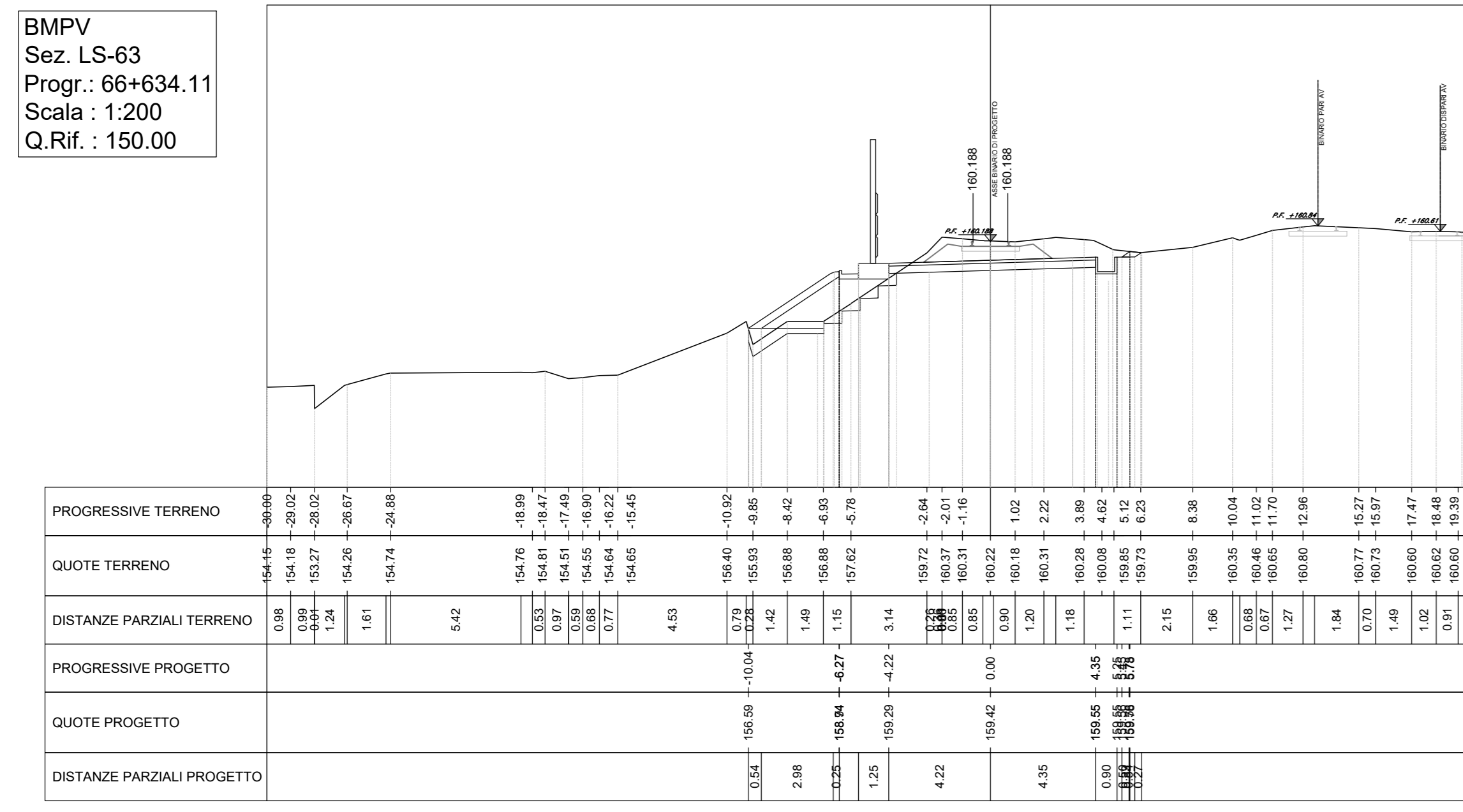
Materiale	Area (mq)	Vol. (m³)	Vol. Cum. (m³)
Sub-Ballast	1.03	25.70	25.70
Supercompattato	2.61	65.33	65.33
Invertimento-Terreno vegetale	0.00	0.00	0.00
Gradonatura	0.00	0.00	0.00
Scotto	0.00	0.00	0.00
Sieno	2.37	59.20	59.20
Riparto	1.29	32.29	32.29

BMPV
Sez. LS-61
Prog.: 66+500.00
Scala: 1:200
Q.Rif.: 150.00



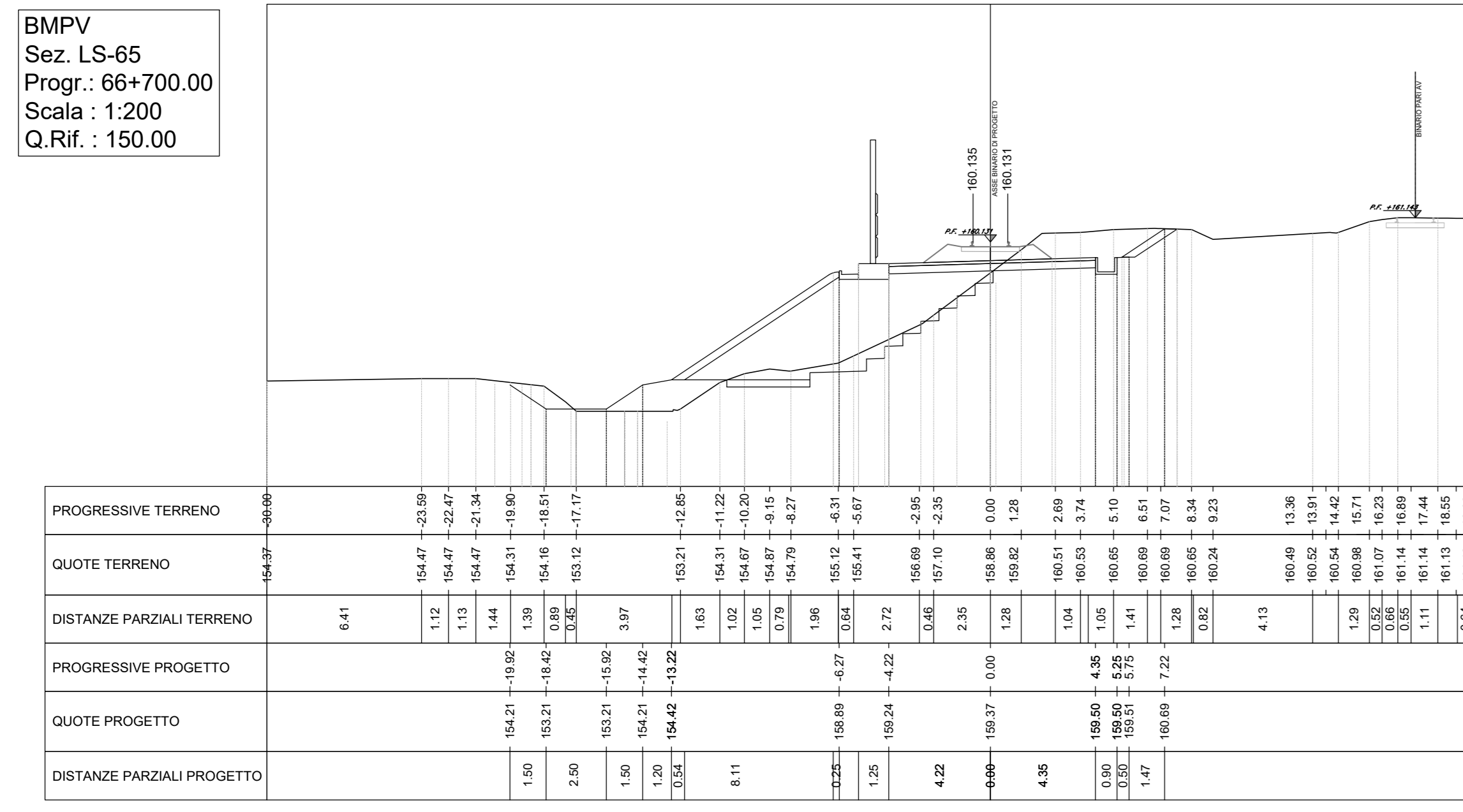
Materiale	Area (mq)	Vol. (m³)	Vol. Cum. (m³)
Sub-Ballast	1.03	81.41	128.23
Supercompattato	2.61	130.66	306.66
Invertimento-Terreno vegetale	2.44	130.45	199.82
Gradonatura	7.36	347.34	510.06
Scotto	1.24	170.31	234.57
Sieno	7.24	355.52	548.51
Riparto	10.18	535.51	681.96

BMPV
Sez. LS-63
Prog.: 66+634.11
Scala: 1:200
Q.Rif.: 150.00



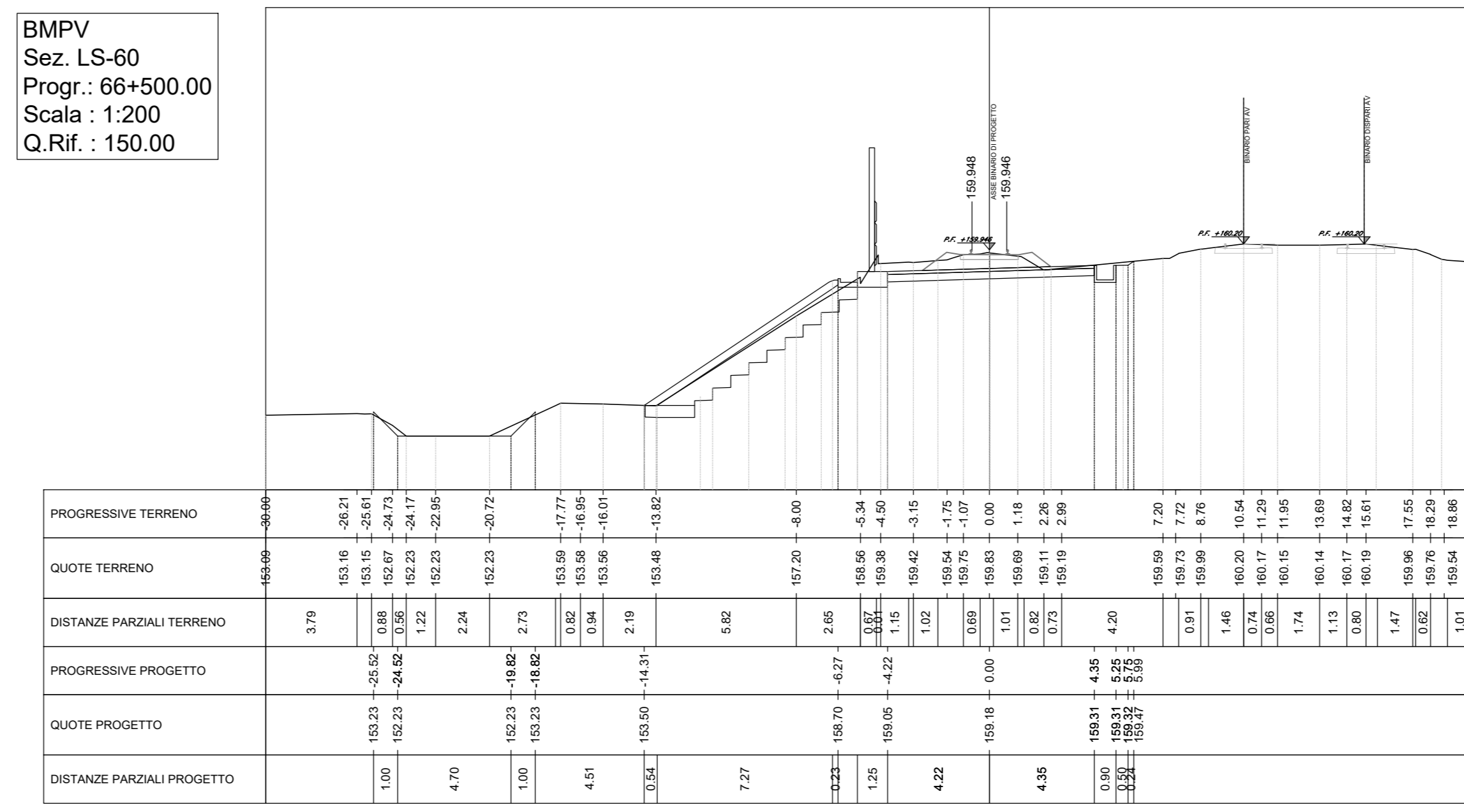
Materiale	Area (mq)	Vol. (m³)	Vol. Cum. (m³)
Sub-Ballast	1.03	17.54	171.76
Supercompattato	2.61	44.57	436.56
Invertimento-Terreno vegetale	1.35	66.91	391.36
Gradonatura	3.38	106.02	877.69
Scotto	1.29	19.32	400.63
Sieno	6.40	248.68	1173.25
Riparto	8.32	359.58	1810.77

BMPV
Sez. LS-65
Prog.: 66+700.00
Scala: 1:200
Q.Rif.: 150.00



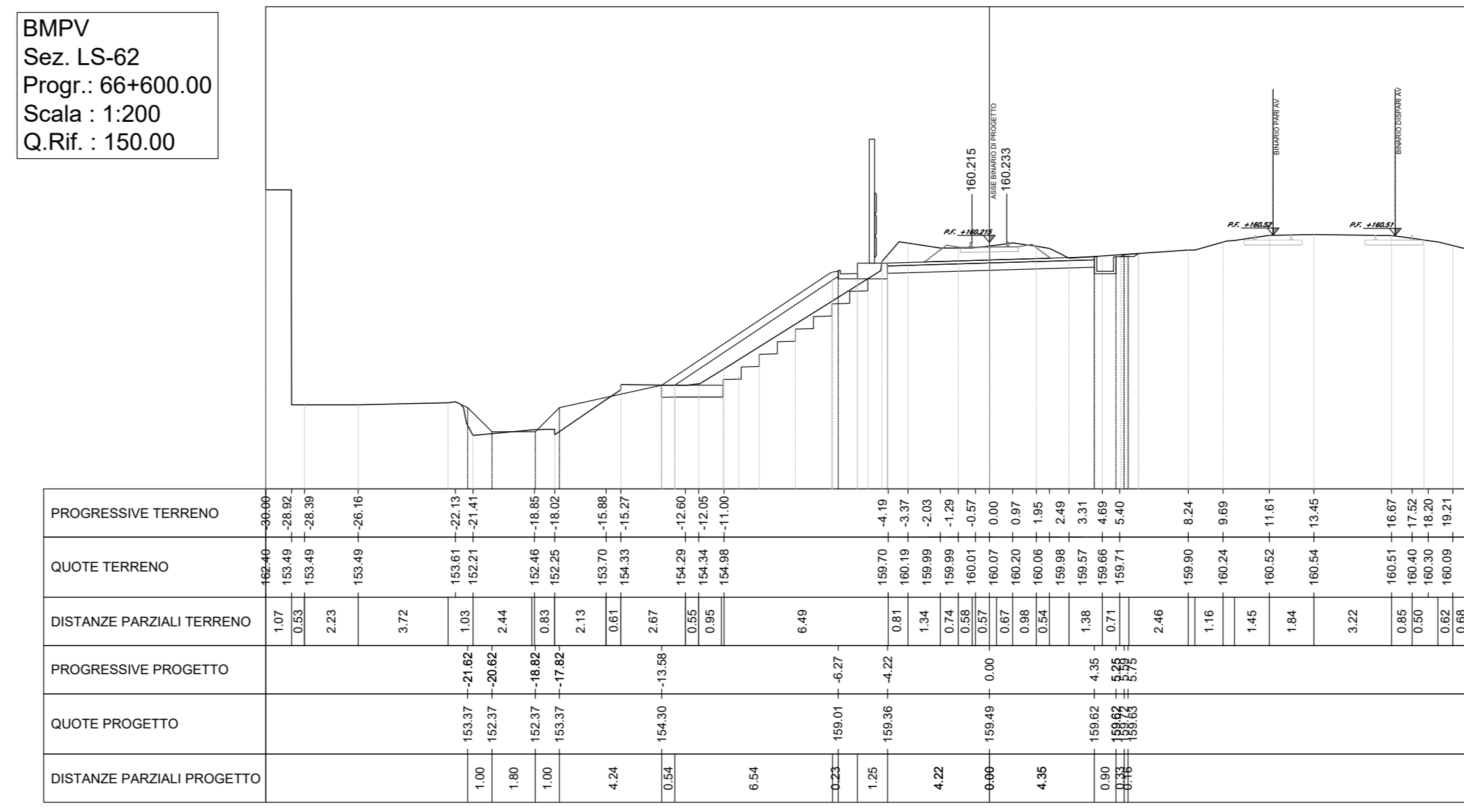
Materiale	Area (mq)	Vol. (m³)	Vol. Cum. (m³)
Sub-Ballast	1.03	51.41	239.51
Supercompattato	2.61	130.66	608.74
Invertimento-Terreno vegetale	3.02	132.67	562.90
Gradonatura	3.38	111.22	1024.19
Scotto	1.20	150.31	874.81
Sieno	6.55	279.32	1672.72
Riparto	44.13	1567.68	3562.53

BMPV
Sez. LS-60
Prog.: 66+500.00
Scala: 1:200
Q.Rif.: 150.00



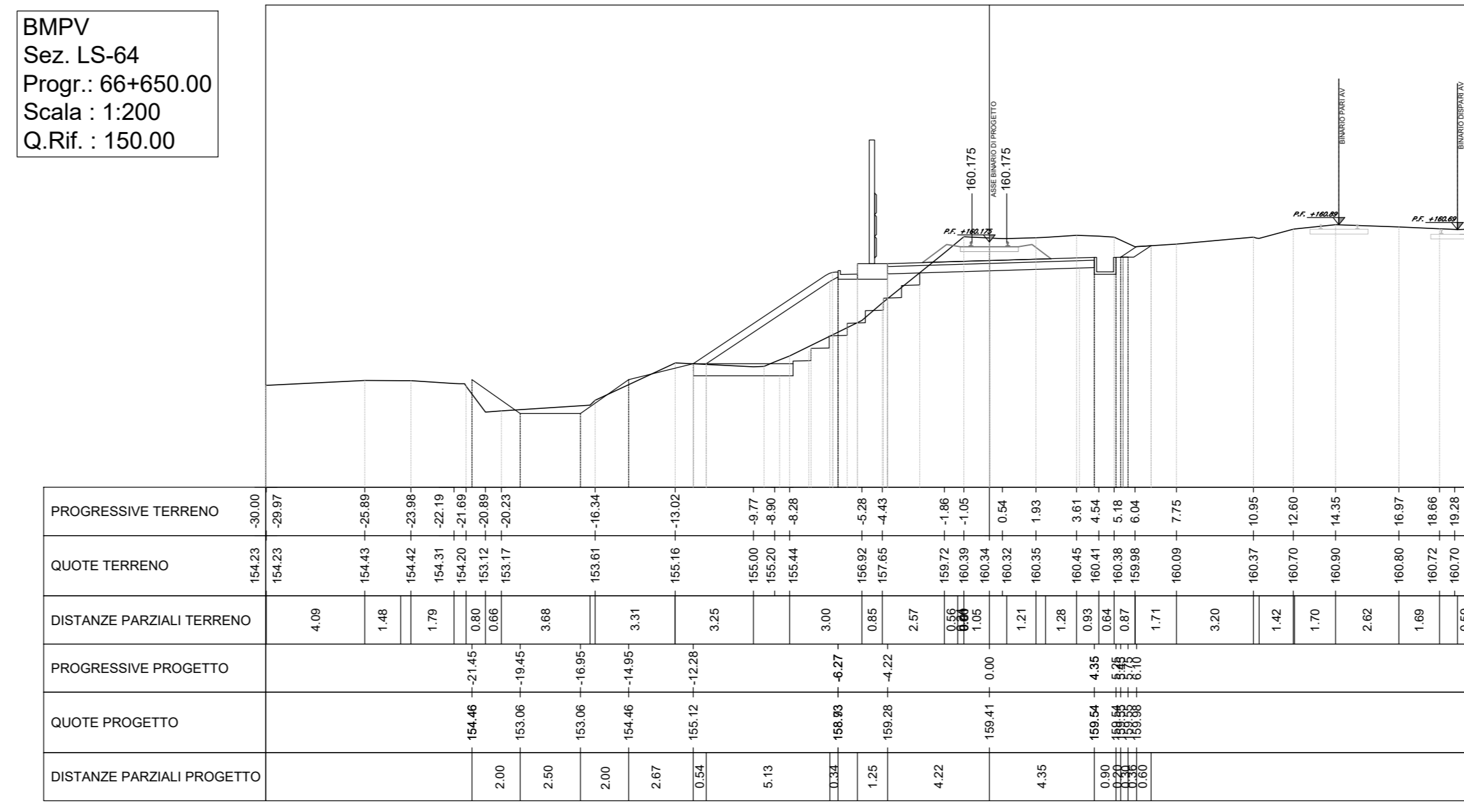
Materiale	Area (mq)	Vol. (m³)	Vol. Cum. (m³)
Sub-Ballast	1.03	51.41	77.11
Supercompattato	2.61	130.66	155.99
Invertimento-Terreno vegetale	2.78	69.47	69.47
Gradonatura	6.53	163.32	163.32
Scotto	1.57	64.26	64.26
Sieno	4.86	183.80	242.88
Riparto	11.24	313.27	345.56

BMPV
Sez. LS-62
Prog.: 66+600.00
Scala: 1:200
Q.Rif.: 150.00



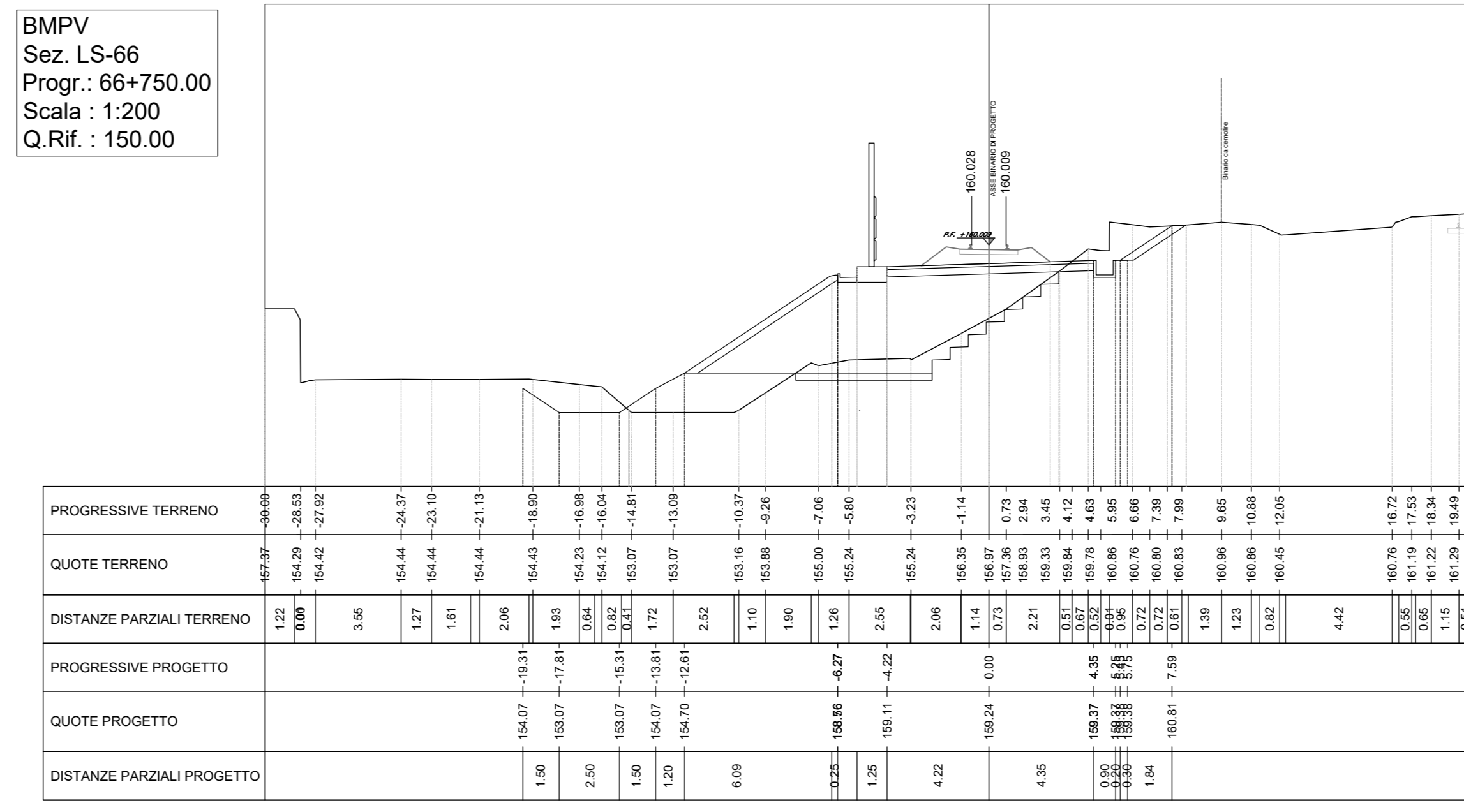
Materiale	Area (mq)	Vol. (m³)	Vol. Cum. (m³)
Sub-Ballast	0.00	25.71	154.23
Supercompattato	0.00	65.33	391.99
Invertimento-Terreno vegetale	2.58	124.54	324.46
Gradonatura	3.02	298.01	789.67
Scotto	3.10	181.74	416.53
Sieno	1.31	376.23	824.78
Riparto	12.76	570.12	1451.16

BMPV
Sez. LS-64
Prog.: 66+650.00
Scala: 1:200
Q.Rif.: 150.00



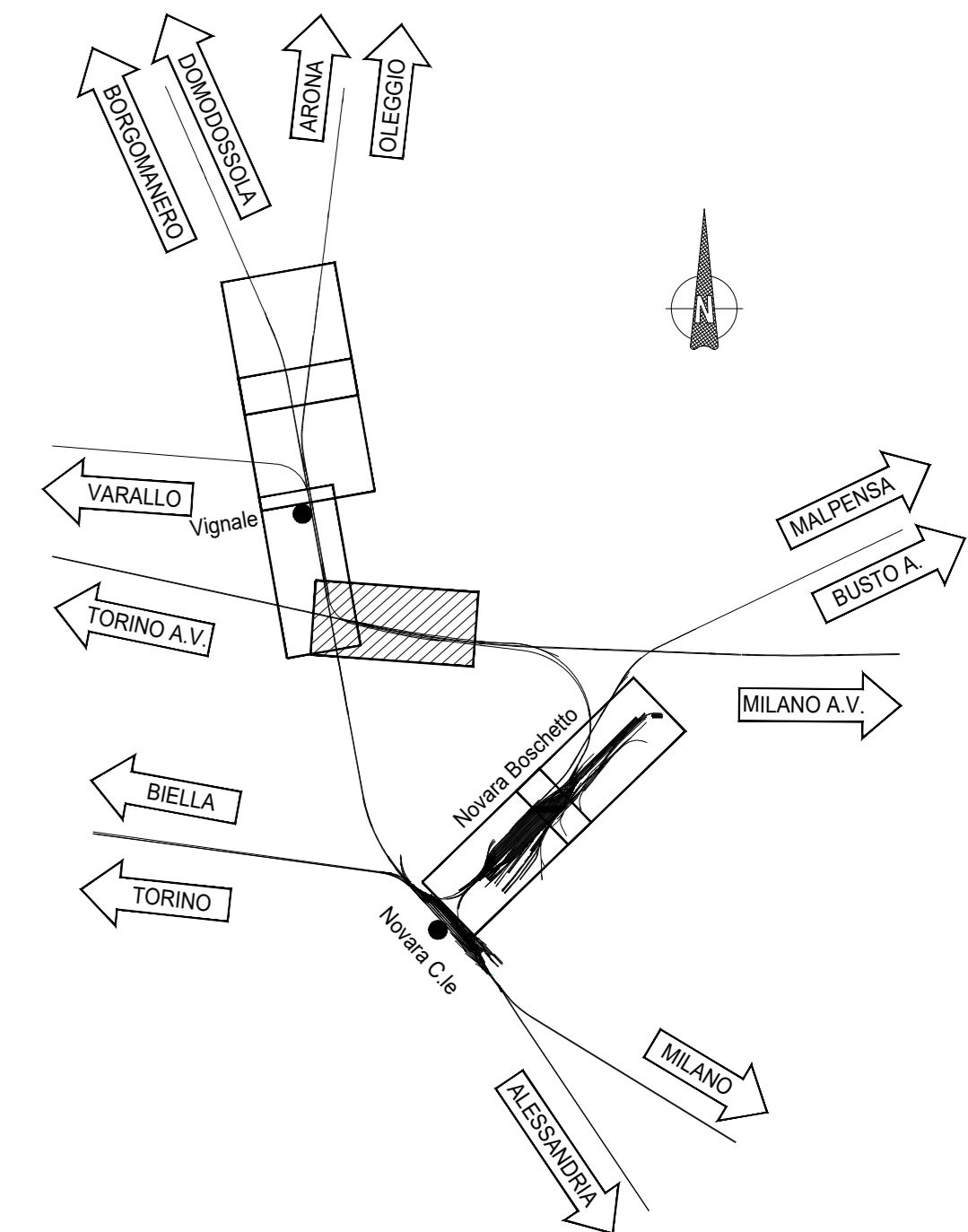
Materiale	Area (mq)	Vol. (m³)	Vol. Cum. (m³)
Sub-Ballast	1.03	16.34	188.10
Supercompattato	2.61	41.52	476.08
Invertimento-Terreno vegetale	2.29	28.87	420.23
Gradonatura	1.06	35.28	912.97
Scotto	2.06	30.00	524.63
Sieno	6.57	324.26	1284.44
Riparto	18.58	213.79	2024.65

BMPV
Sez. LS-66
Prog.: 66+750.00
Scala: 1:200
Q.Rif.: 150.00



Materiale	Area (mq)	Vol. (m³)	Vol. Cum. (m³)
Sub-Ballast	1.03	51.41	290.51
Supercompattato	2.61	130.66	734.40
Invertimento-Terreno vegetale	3.02	132.67	562.90
Gradonatura	4.15	189.98	1213.17
Scotto	1.88	271.85	846.86
Sieno	4.50	287.50	1596.00
Riparto	59.18	2264.54	6187.88

KEY - PLAN



COMMITENTE:



PROGETTAZIONE:



PROGETTO DEFINITIVO

NODO DI NOVARA
1ª FASE PRG DI NOVARA BOSCHETTO

CORPO STRADALE FERROVIARIO
Sezioni trasversali - Tavola 8 di 17 Bretella Merci

SCALA:
1:200

COMMESSA LOTTO FASE ENTE TIPO DOC. OPERA/DISCIPLINA PROGR. REV.

NM0Y 00 D 11 W9 CS0000 008 A

Rev.	Descrizione	Redatto	Data	Verificato	Data	Approvato	Data	Autorizzato Data
A	Emissione esecutiva	A. Inghis	Maggi 2021	M. Maresca	Maggi 2021	F. Perrone	Maggi 2021	D. Maresca Maggi 2021

