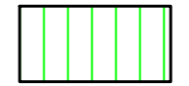


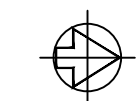
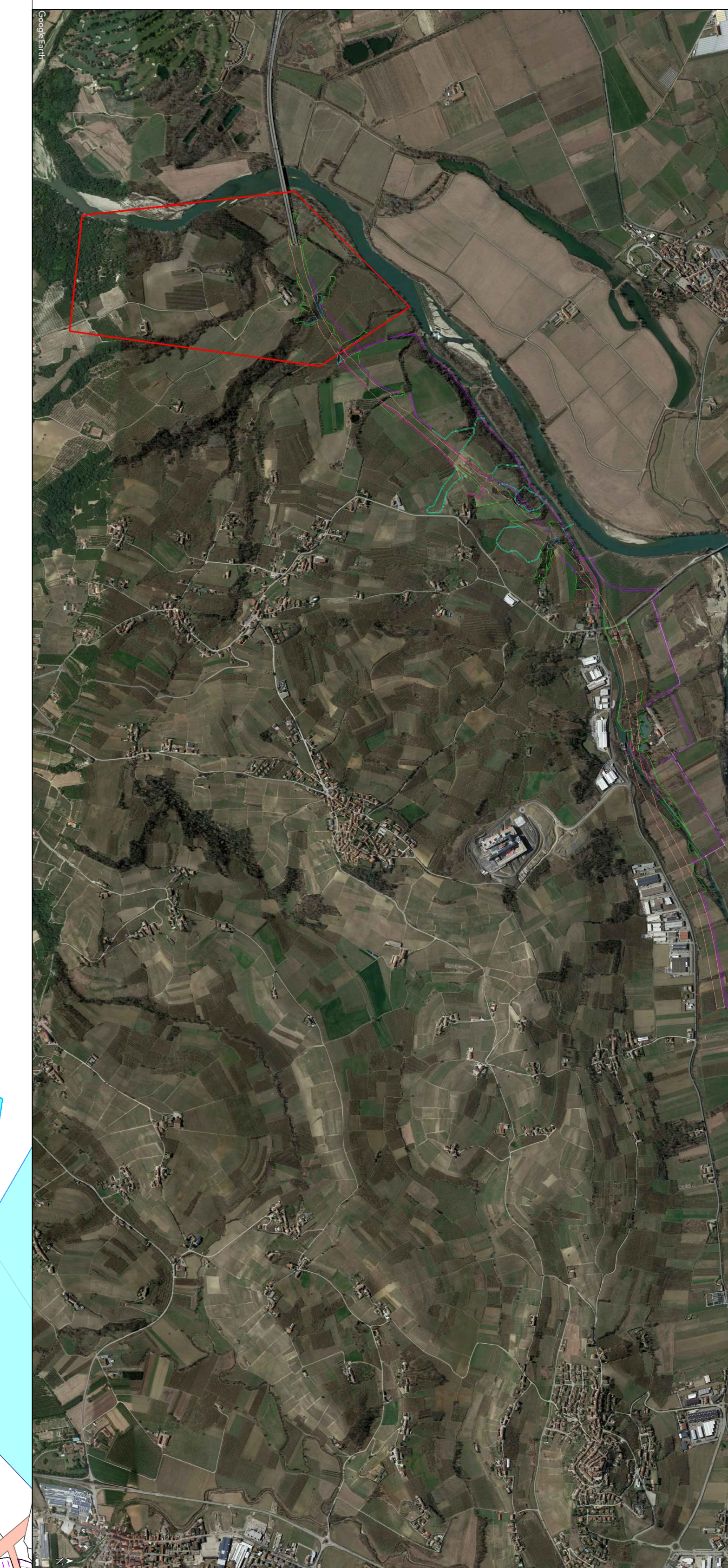


LEGENDA

-  Confine foglio catastale
-  Mitigazione - Opere a verde
-  Sede stradale
-  Espr. Temporaneo - Aree operative
-  Espr. Temporaneo - Viabilità di cantiere
-  Aree Sistemazioni fosso
-  Viabilità locali
-  Aree servitù per trincee drenanti

KEYPLAN






TRONCO II A21 (ASTI EST) - A6 (MARENE)  
LOTTO 6 RODDI-DIGA ENEL

STRALCIO a  
TRA IL LOTTO II.7 E LA PK. 5+000

PROGETTO DEFINITIVO

PIANO PARTICELLARE DI ESPROPRIO  
PLANIMETRIA CATASTALE  
Comune di Cherasco (CN)

IMPRESA 	PROGETTISTA 	INTEGRATORE ATTIVITA' SPECIALISTICHE 	COMITENTE Autostrada Asti-Cuneo S.p.A. Divisione e Coordinamento S.C.A. di Torino (AT) Via XX Settembre, 101 00187 Roma
--	--	---	---

REV.	DATA	DESCRIZIONE	REDATTO	CONTR.	APPROV.	RESAME	DATA	SCALA
A	06-2021	EMISSIONE	Ing. Cassini	Ing. Di Pietro	Ing. Spazzoli	Ing. Spazzoli	LUGLIO 2021	1:2.000
							N. PROGR.	01.05.01

CODIFICA	PROGETTO	DA	DOCUMENTO	REV.	WBS															
	P01	17	D	E	S	P	P	0	0	1	A	03	1	2	6	4	0	0	0	0

RESPONSABILE DEL PROCEDIMENTO	VISTO DELLA COMMITTENTE
-------------------------------	-------------------------