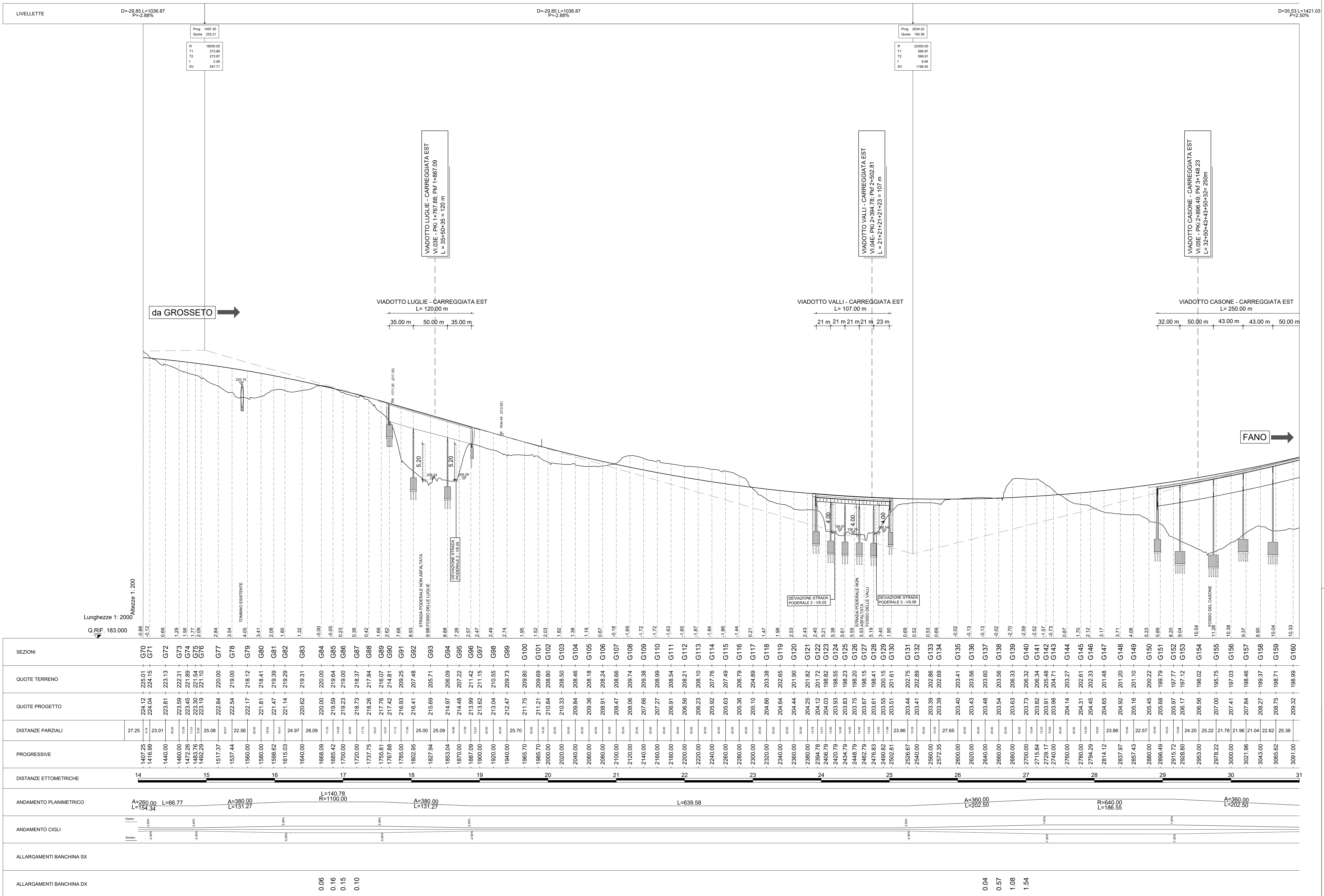


Profilo Longitudinale Asse Principale Carreggiata Est - Direzione Grosseto-Fano - Tav 2



SEZIONI	QUOTE TERRENO	QUOTE PROGETTO	DISTANZE PARZIALI	PROGRESSIVE	DISTANZE ETOMETRICHE	ANDAMENTO PLANIMETRICO	ANDAMENTO CIGLI	ALLARGAMENTI BANCHINA SX	ALLARGAMENTI BANCHINA DX
G70	225.01	224.12	27.25	1407.25	14	A=260.00 L=66.77	-0.20%		
G71	224.10	224.04	0.74	1416.99	15	L=131.27	-0.20%		
G72	223.13	223.81	23.01	1440.00	16	A=380.00 L=131.27	-0.20%		
G73	222.31	223.59	0.28	1460.00	17	L=140.78 R=1100.00	-0.20%	0.06	
G74	221.96	224.45	0.49	1472.26	18	A=380.00 L=131.27	-0.20%	0.16	
G75	221.86	224.26	0.40	1474.26	19	L=639.58	-0.20%	0.15	
G76	221.18	223.39	25.08	1482.25	20		-0.20%	0.10	
G77	220.00	222.84	20.07	1517.37	21		-0.20%		
G78	219.00	222.54	22.56	1537.44	22		-0.20%		
G79	218.12	222.17	20.05	1580.00	23		-0.20%		
G80	218.41	221.81	20.05	1580.00	24		-0.20%		
G81	219.39	221.47	0.41	1598.62	25		-0.20%		
G82	219.29	221.14	24.97	1615.03	26		-0.20%		
G83	219.31	220.62	28.09	1640.00	27		-0.20%		
G84	220.00	220.00	0.33	1668.09	28		-0.20%		
G85	219.64	219.59	0.48	1685.42	29		-0.20%		
G86	219.00	219.23	0.06	1700.00	30		-0.20%		
G87	218.37	218.73	0.36	1720.00	31		-0.20%		
G88	217.84	218.28	0.07	1737.75	32		-0.20%		
G89	216.07	217.76	0.07	1755.81	33		-0.20%		
G90	214.81	217.42	0.15	1767.88	34		-0.20%		
G91	209.25	216.63	0.09	1785.00	35		-0.20%		
G92	207.46	216.41	0.06	1802.95	36		-0.20%		
G93	205.71	215.69	25.00	1827.94	37		-0.20%		
G94	206.09	214.97	25.09	1853.04	38		-0.20%		
G95	207.22	214.48	0.98	1870.00	39		-0.20%		
G96	211.42	213.99	0.01	1887.09	40		-0.20%		
G97	211.15	213.62	0.01	1900.00	41		-0.20%		
G98	210.50	213.04	20.00	1920.00	42		-0.20%		
G99	209.73	212.47	20.07	1940.00	43		-0.20%		
G100	209.80	211.75	25.70	1965.70	44		-0.20%		
G101	209.69	211.21	20.09	1985.70	45		-0.20%		
G102	208.80	210.84	20.00	2000.00	46		-0.20%		
G103	206.50	210.33	20.00	2020.00	47		-0.20%		
G104	206.46	204.00	20.00	2040.00	48		-0.20%		
G105	206.18	206.36	20.00	2060.00	49		-0.20%		
G106	206.24	208.91	20.00	2080.00	50		-0.20%		
G107	206.66	208.47	20.00	2100.00	51		-0.20%		
G108	209.74	208.06	20.00	2120.00	52		-0.20%		
G109	206.38	207.66	20.00	2140.00	53		-0.20%		
G110	206.99	207.27	20.00	2160.00	54		-0.20%		
G111	206.54	206.91	20.00	2180.00	55		-0.20%		
G112	206.21	206.56	20.00	2200.00	56		-0.20%		
G113	208.10	206.23	20.00	2220.00	57		-0.20%		
G114	207.76	205.92	20.00	2240.00	58		-0.20%		
G115	207.49	205.63	20.00	2260.00	59		-0.20%		
G116	206.79	205.36	20.00	2280.00	60		-0.20%		
G117	204.89	205.10	20.00	2300.00	61		-0.20%		
G118	203.38	204.86	20.00	2320.00	62		-0.20%		
G119	202.65	204.64	20.00	2340.00	63		-0.20%		
G120	201.90	204.44	20.00	2360.00	64		-0.20%		
G121	201.82	204.25	20.00	2380.00	65		-0.20%		
G122	240.00	204.12	20.00	2394.78	66		-0.20%		
G123	196.82	240.03	20.00	2406.79	67		-0.20%		
G124	196.55	240.79	20.00	2420.93	68		-0.20%		
G125	196.23	243.79	20.00	2434.79	69		-0.20%		
G126	196.20	2448.79	20.00	2448.79	70		-0.20%		
G127	198.15	2462.79	20.00	2462.79	71		-0.20%		
G128	198.41	2476.83	20.00	2476.83	72		-0.20%		
G129	200.15	2490.82	20.00	2490.82	73		-0.20%		
G130	201.61	2502.81	20.00	2502.81	74		-0.20%		
G131	202.75	2526.67	23.96	2526.67	75		-0.20%		
G132	202.89	2540.00	23.33	2540.00	76		-0.20%		
G133	202.86	2550.00	20.00	2560.00	77		-0.20%		
G134	202.69	2572.35	20.00	2572.35	78		-0.20%		
G135	203.41	2600.00	27.65	2600.00	79		-0.20%		
G136	203.56	2620.00	20.00	2620.00	80		-0.20%		
G137	203.60	2640.00	20.00	2640.00	81		-0.20%		
G138	203.56	2660.00	20.00	2660.00	82		-0.20%		
G139	206.33	2680.00	20.00	2680.00	83		-0.20%		
G140	206.32	2700.00	20.00	2700.00	84		-0.20%		
G141	206.34	2715.84	0.04	2715.84	85		-0.20%		
G142	205.48	2729.17	0.01	2729.17	86		-0.20%		
G143	204.71	2740.00	0.01	2740.00	87		-0.20%		
G144	203.27	2760.00	20.00	2760.00	88		-0.20%		
G145	202.61	2780.00	20.00	2780.00	89		-0.20%		
G146	202.33	2794.29	0.29	2794.29	90		-0.20%		
G147	201.48	2814.12	19.83	2814.12	91		-0.20%		
G148	201.20	2837.97	23.86	2837.97	92		-0.20%		
G149	201.10	2857.43	22.57	2857.43	93		-0.20%		
G150	200.22	2880.00	0.01	2880.00	94		-0.20%		
G151	199.79	2896.49	0.01	2896.49	95		-0.20%		
G152	197.77	2915.72	0.01	2915.72	96		-0.20%		
G153	197.12	2928.90	0.01	2928.90	97		-0.20%		
G154	196.02	2953.00	24.20	2953.00	98		-0.20%		
G155	195.75	2978.22	25.22	2978.22	99		-0.20%		
G156	197.03	3000.00	21.78	3000.00	100		-0.20%		
G157	196.46	3021.96	21.96	3021.96	101		-0.20%		
G158	199.37	3043.00	21.04	3043.00	102		-0.20%		
G159	198.71	3065.62	22.62	3065.62	103		-0.20%		
G160	198.99	3091.00	25.38	3091.00	104		-0.20%		

anas GRUPPO FS ITALIANE Direzione Progettazione e Realizzazione Lavori

S.G.C. E78 GROSSETO-FANO
Tratto Siena Bettolle (A1)
Adeguamento a 4 corsie del tratto Siena-Ruffolo (Lotto 0)

PROGETTO DEFINITIVO COD. FI-81

R.T.I. di PROGETTAZIONE: Mandataria **PRO ITER** Mandante **sinergo** **VA**

PROGETTISTI:
Ing. Riccardo Formichi - Pro. Ter. srl (Integratore prestazioni specializzate)
Ordine Ing. di Milano n. 18045
Ing. Riccardo Formichi - Pro. Ter. srl
Ordine Ing. di Milano n. 18045

IL GEOLOGO:
Dott. Gian Massimo Mazzarino - Pro. Ter. srl
Albo Geol. Lombardia n. 4782

COORDINATORE PER LA SICUREZZA IN FASE DI PROGETTAZIONE:
Ing. Enrico Masetti - Brevis. srl
Ordine Ing. di Milano n. 16237

VISTO IL RESP. DEL PROCEDIMENTO
Ing. Francesco Pisani

PROTOCOLLO DATA

05 - PROGETTO STRADALE
05.02 - ASSE PRINCIPALE
Profilo longitudinale carreggiata Est - Tav 2

PROGETTO	UV. PROG.	N. PROG.	REVISIONE	SCALA
D P F I 1 0 0 8 1	D	20	C	1:2000:200

REV.	DESCRIZIONE	DATA	REDATTO	VERIFICATO	APPROVATO
D					
C	Revisione per istruttoria ANAS	Luglio 2021	LA ROSA	VICARI	FORMICHI
B	Revisione per istruttoria ANAS	Maggio 2021	LA ROSA	VICARI	FORMICHI
A	Emissione	Ottobre 2020	MARZ	VICARI	FORMICHI