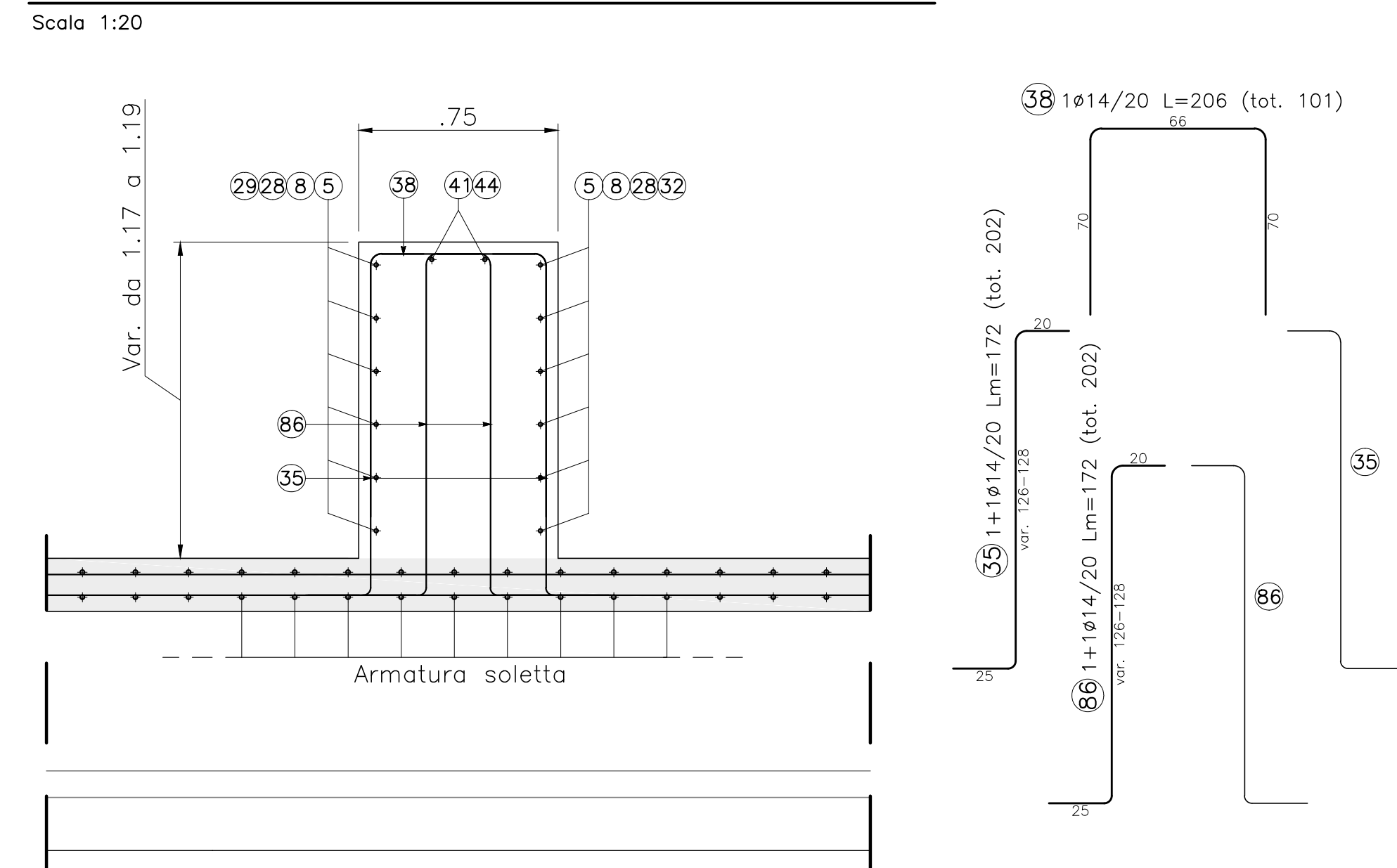
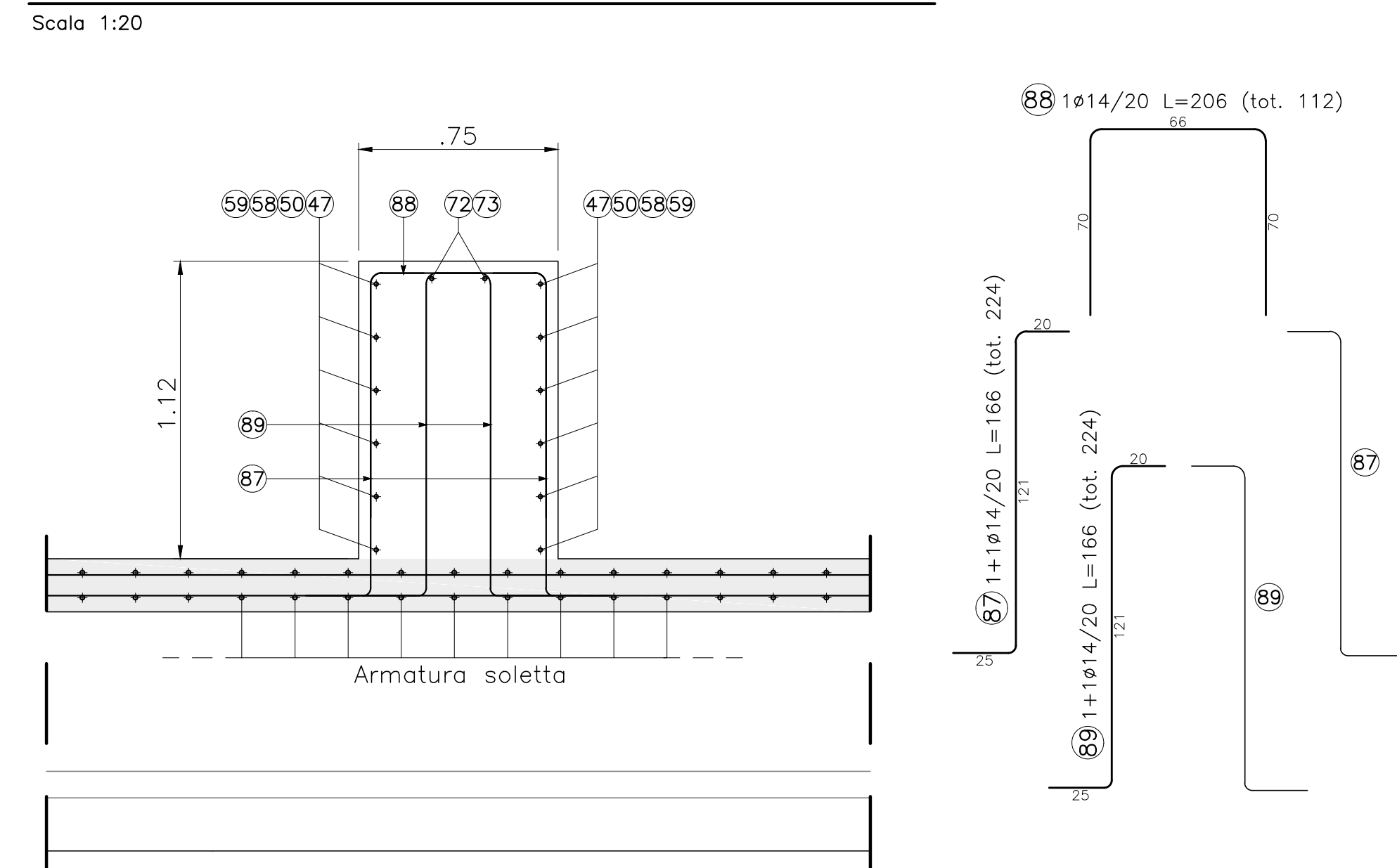


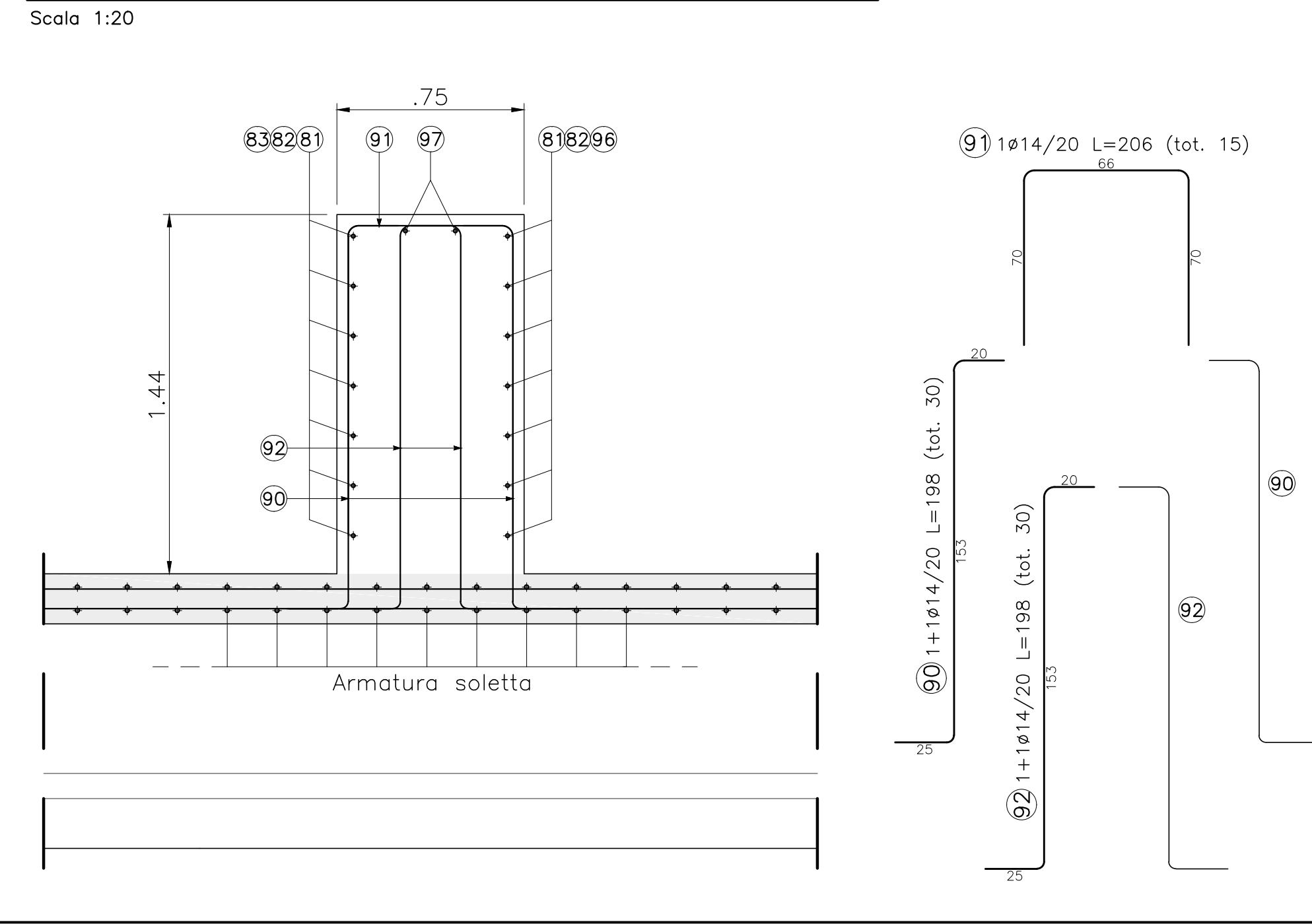
DETTAGLIO ARMATURA CORDOLO STRADALE 2



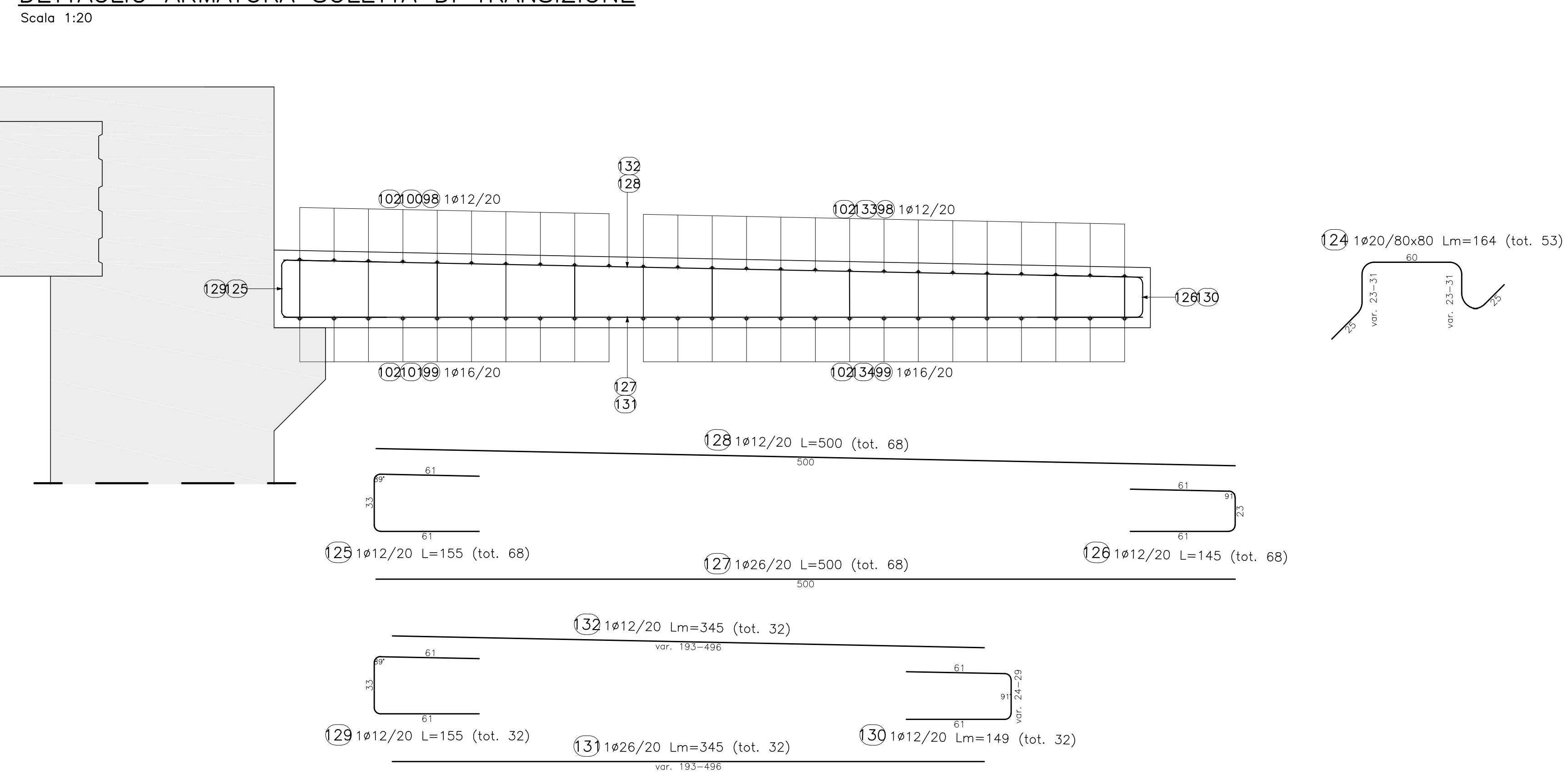
DETTAGLIO ARMATURA CORDOLO STRADALE 3



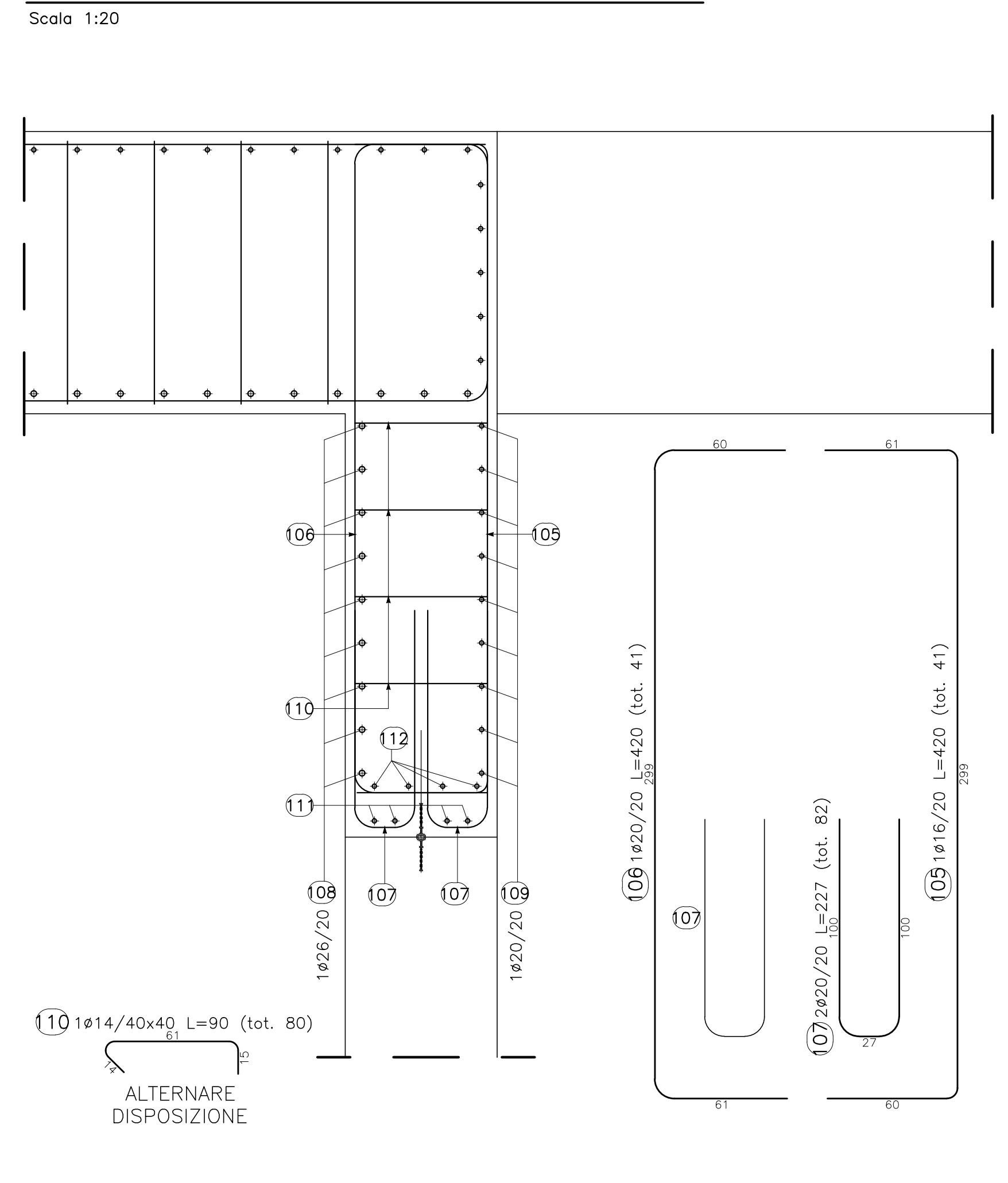
DETTAGLIO ARMATURA CORDOLO STRADALE 4



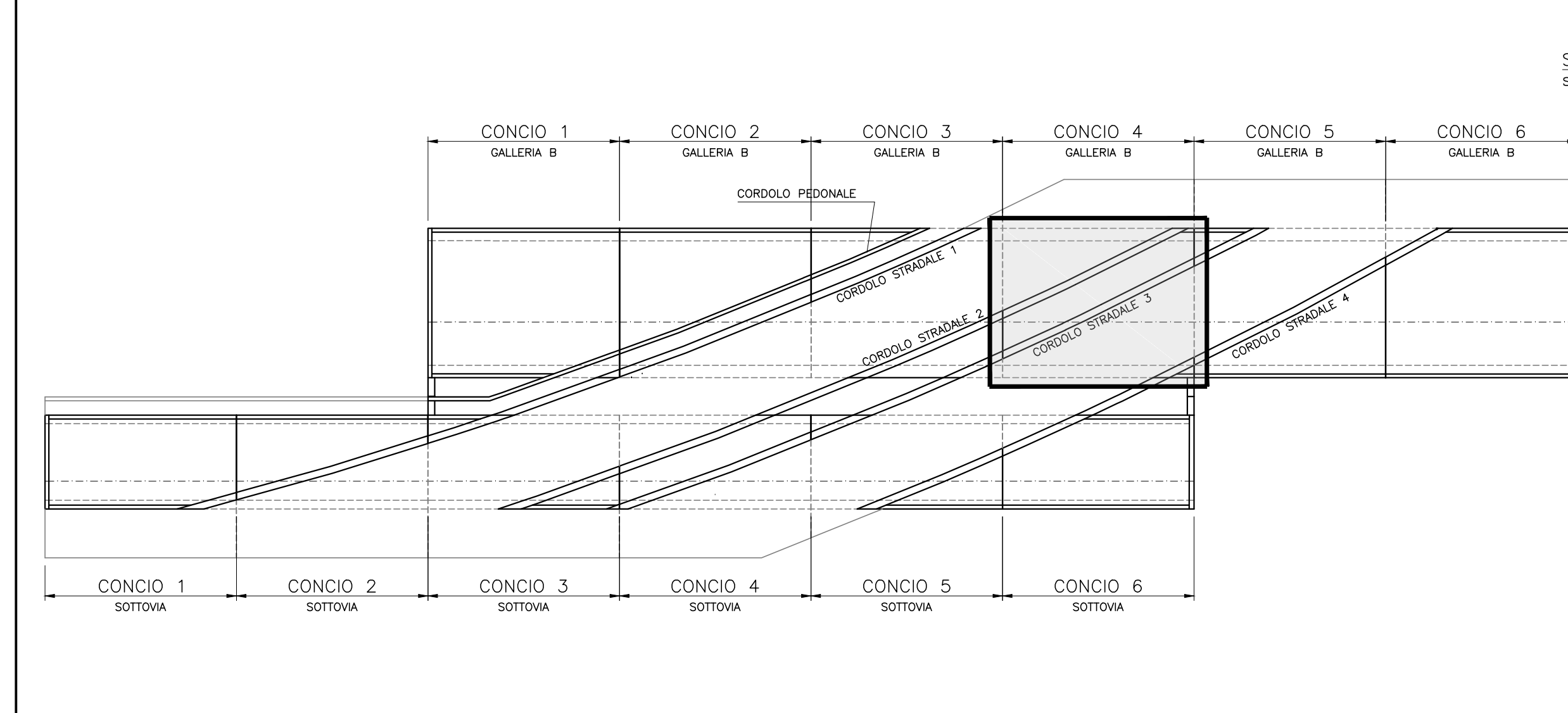
DETTAGLIO ARMATURA SOLETTA DI TRANSIZIONE



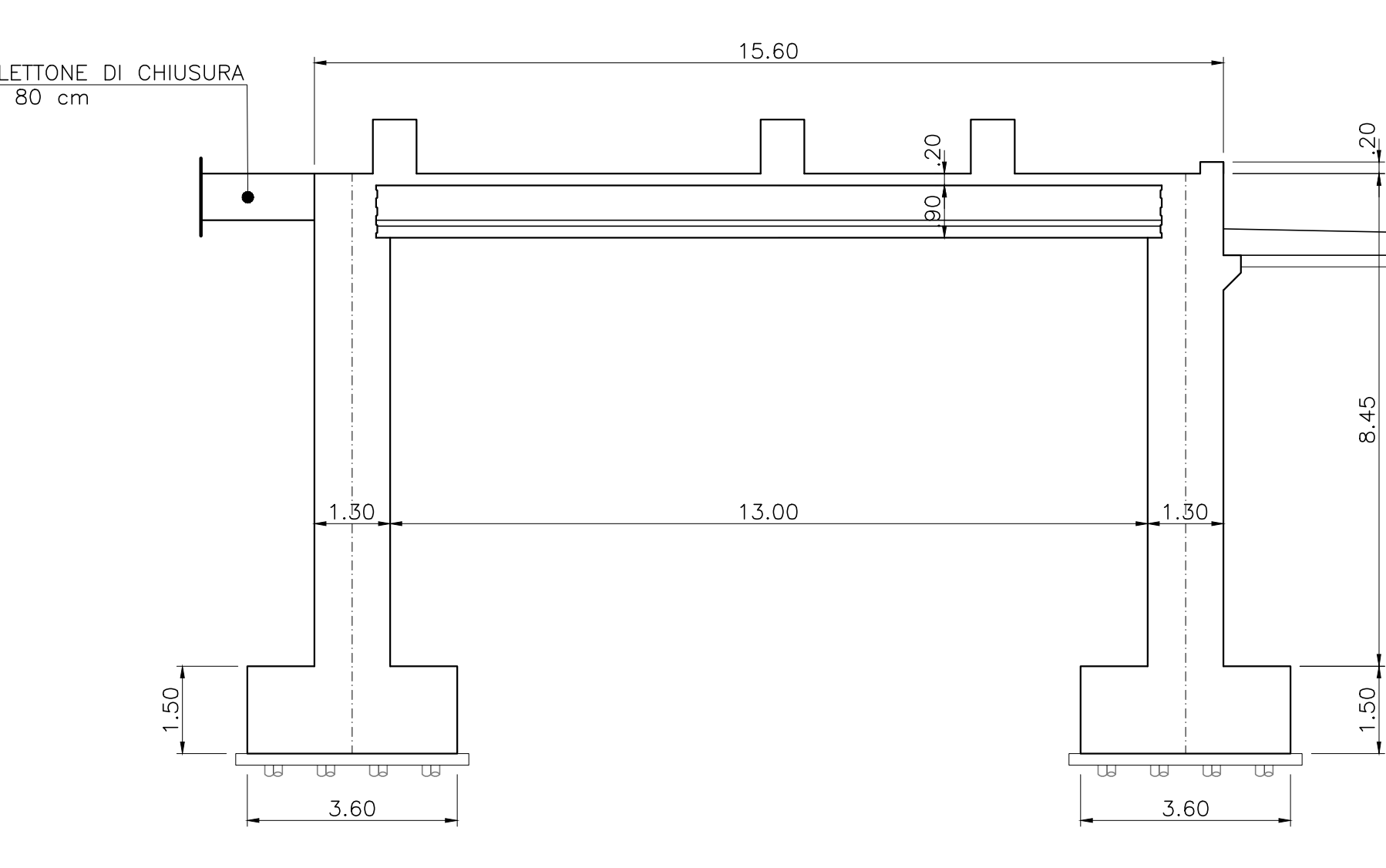
DETTAGLIO ARMATURA MURO A BANDIERA



**PIANTA CHIAVE
GALLERIA ARTIFICIALE "B"**



**SEZIONE TRASVERSALE CHIAVE
CONCIO 4**



Galleria artificiale - fondazioni

POSIZIONE	N. PEZZI	φ [mm]	L [cm]	L. TOT [m]	PESO [kg]	SCHEMA PIEGATURA [cm] (misure al filo esterno)
1	202	26	630	1272.6	5304.2	[Diagram]
2	202	20	600	1212.0	2988.8	[Diagram]
3	76	20	1200	912.0	2249.0	[Diagram]
4	76	20	1170	889.2	2192.8	[Diagram]
6	12	16	1160	139.2	219.7	[Diagram]
7	12	16	1000	120.0	189.4	[Diagram]
9	12	16	425	51.0	80.5	[Diagram]
10	166	20	400	664.0	1637.4	[Diagram]
11	202	20	270	546.4	1347.4	[Diagram]
12	202	26	300	606.0	2525.8	[Diagram]
13	20	20	270	54.1	133.4	[Diagram]
14	16	20	270	43.3	106.7	[Diagram]
15	152	20	265	402.6	992.9	[Diagram]
16	16	16	425	68.0	107.3	[Diagram]
					20075.3	

Galleria artificiale - parete

POSIZIONE	N. PEZZI	φ [mm]	L [cm]	L. TOT [m]	PESO [kg]	SCHEMA PIEGATURA [cm] (misure al filo esterno)
17	202	20	845	1706.9	4209.2	[Diagram]
18	202	26	925	1867.5	7783.7	[Diagram]
19	20	20	780	156.0	384.7	[Diagram]
20	202	20	300	606.0	1494.4	[Diagram]
21	202	26	320	647.2	2697.6	[Diagram]
22	202	26	350	708.0	2951.0	[Diagram]
23	16	20	194	31.0	76.5	[Diagram]
24	1200	14	150	1801.8	2176.6	[Diagram]
25	204	14	120	245.1	296.1	[Diagram]
26	204	14	129	263.5	318.3	[Diagram]
27	42	12	178	75.0	66.6	[Diagram]
30	72	20	1200	864.0	2130.6	[Diagram]
31	72	20	1131	814.3	2008.1	[Diagram]
33	72	16	1200	864.0	1363.4	[Diagram]
34	72	16	1111	799.9	1262.3	[Diagram]
36	10	20	1200	120.0	295.9	[Diagram]
37	10	20	1070	107.0	263.9	[Diagram]
39	10	16	1200	120.0	189.4	[Diagram]
40	10	16	1050	105.0	165.7	[Diagram]
42	10	20	1200	120.0	295.9	[Diagram]
43	10	20	1035	103.5	255.2	[Diagram]
45	6	20	1200	72.0	177.6	[Diagram]
46	6	20	1000	60.0	148.0	[Diagram]
48	16	20	1200	192.0	473.5	[Diagram]
49	16	20	1000	160.0	394.6	[Diagram]
51	16	20	780	124.8	307.8	[Diagram]
52	12	20	194	23.3	57.4	[Diagram]
53	296	20	256	758.0	1869.2	[Diagram]
54	24	20	226	54.3	133.8	[Diagram]
55	24	20	256	61.5	151.6	[Diagram]
56	2	12	229	4.6	4.1	[Diagram]
57	2	12	347	6.9	6.2	[Diagram]
60	6	26	1200	72.0	300.1	[Diagram]
93	101	14	376	379.4	458.3	[Diagram]
94	21	26	35	7.4	30.6	[Diagram]
95	4	14	1200	48.0	58.0	[Diagram]
104	4	14	900	36.0	43.5	[Diagram]
105	41	16	420	172.1	271.6	[Diagram]
106	41	20	420	172.1	424.4	[Diagram]
107	82	20	227	186.5	460.0	[Diagram]
108	9	26	948	85.3	355.5	[Diagram]
109	9	20	948	85.3	210.3	[Diagram]
110	80	14	90	72.1	87.1	[Diagram]
111	4	20	895	35.8	88.3	[Diagram]
112	4	20	895	35.8	88.3	[Diagram]
113	8	20	339	27.1	66.8	[Diagram]
					37351.7	

Galleria artificiale - soletta

POSIZIONE	N. PEZZI	φ [mm]	L [cm]	L. TOT [m]	PESO [kg]	SCHEMA PIEGATURA [cm] (misure al filo esterno)
5	6	14	210	12.6	15.2	[Diagram]
8	1	14	270	2.7	3.3	[Diagram]
28	12	14	1200	144.0	174.0	[Diagram]
29	6	14	840	50.4	60.9	[Diagram]
32	6	14	1000	60.0	72.5	[Diagram]
35	202	14	172	347.4	419.7	[Diagram]
38	101	14	206	208.1	251.3	[Diagram]
41	2	14	1200	24.0	29.0	[Diagram]
44	2	14	1040	20.8	25.1	[Diagram]
47	6	14	210	12.6	15.2	[Diagram]
50	6	14	210	12.6	15.2	[Diagram]
58	2	14	1200	24.0	29.0	[Diagram]
59	12	14	1090	130.8	158.0	[Diagram]
61	190	26	372	706.8	2945.9	[Diagram]
62	95	26	1200	1140.0	4751.5	[Diagram]
63	8	26	372	29.8	124.0	[Diagram]
64	4	26	1200	48.0	200.1	[Diagram]
65	38	16	1200	456.0	719.6	[Diagram]
66	38	16	400	152.0	239.9	[Diagram]
67	202	20	400	808.0	1992.5	[Diagram]
68	101	20	1200	1212.0	2988.8	[Diagram]
69	202	26	600	1211.3	5048.6	[Diagram]
70	101	26	800	808.0	3367.7	[Diagram]
71	202	26	400	808.0	3367.7	[Diagram]
72	2	14	1200	24.0	29.0	[Diagram]
73	2	14	1180	23.6	28.5	[Diagram]
74	24	16	285	68.4	107.9	[Diagram]
75	12	16	1200	144.0	227.2	[Diagram]
76	138	16	1200	1656.0	2613.2	[Diagram]
77	138	16	900	1242.0	1959.9	[Diagram]
78	6	20	1200	72.0	177.6	[Diagram]
79	1311	14	250	3274.2	3955.2	[Diagram]
80	1311	14	180	2359.8	2850.6	[Diagram]
81	7	14	270	18.9	22.9	[Diagram]
82	7	14	210	14.7	17.7	[Diagram]
83	7	14	449	31.5	38.0	[Diagram]
84	138	14	218	301.0	363.6	[Diagram]
85	399	14	215	859.1	1037.7	[Diagram]
86	202	14	172	347.4	419.7	[Diagram]
87	224	14	166	371.8	449.2	[Diagram]
88	112	14	206	230.7	278.7	[Diagram]
89	224	14	166	371.8	449.2	[Diagram]
90	30	14	198	59.4	71.8	[Diagram]
91	15	14	206	30.9	37.3	[Diagram]
92	30	14	198	59.4	71.8	[Diagram]
96	7	14	292	20.4	24.7	[Diagram]
97	2	14	468	9.4	11.3	[Diagram]
					42257.4	

Galleria artificiale - soletta di transizione

POSIZIONE	N. PEZZI	φ [mm]	L [cm]	L. TOT [m]	PESO [kg]	SCHEMA PIEGATURA [cm] (misure al filo esterno)
98	25	12	1200	300.0	266.4	[Diagram]
99	25	16	1200	300.0	473.4	[Diagram]
100	10	12	849	84.9	75.4	[Diagram]
101	10	16	869	86.9	137.1	[Diagram]
102	50	12	191	95.5	84.8	[Diagram]
124	53	20	164	86.9	214.3	[Diagram]
125	68	12	155	105.6	93.7	[Diagram]
126	68	12	145	98.8	87.7	[Diagram]
127	68	26	500	340.0	1417.1	[Diagram]
128	68	12	500	340.0	301.9	[Diagram]
129	32	12	155	49.7	44.1	[Diagram]
130	32	12	149	47.5	42.2	[Diagram]
131	32	26	345	110.2	459.5	[Diagram]
132	32	12	345	110.2	97.9	[Diagram]
133	15	12	523	78.4	69.6	[Diagram]
134	15	16	543	81.4	126.4	[Diagram]
					3993.5	

Sanas GRUPPO FS ITALIANE Direzione Progettazione e Realizzazione Lavori

S.S.291 "Della Nurra"
Lavori di costruzione del Lotto 1 da Alghero ad Olmedo, in località bivio cantoniera di Rudas (completamento collegamento Alghero-Sassari) e del Lotto 4 tra bivio Olmedo e l'aeroporto di Alghero-Fertilia (bretella per l'aeroporto)

PROGETTO ESECUTIVO cod. CAD

PROGETTAZIONE: Ats VA - SERING - VDP - BREGG

PROGETTISTA E RESPONSABILE DELL'INTEGRAZIONE DELLE PRESTAZIONI SPACCASTRICHE:
[Diagram]

RESPONSABILE D'AREA:
[Diagram]

COORDINATORE SICUREZZA IN FASE DI PROGETTAZIONE:
[Diagram]

COORDINATORE ATTIVITA' DI PROGETTAZIONE:
[Diagram]

VISTO: IL RESPONSABILE DEL PROCEDIMENTO:
[Diagram]

GALLERIE ARTIFICIALI
GALLERIA ARTIFICIALE FERROVIA "B"
ARMATURA CONCIO 4 - Tav. 2 di 2

CODICE PROGETTO	PROGETTO	LV. PROJ. MANO	NOME FILE	REVISIONE	SCALA
DIPCA0029	E 21		TO2_GAO2_STR_AR09_A	A	VARIE