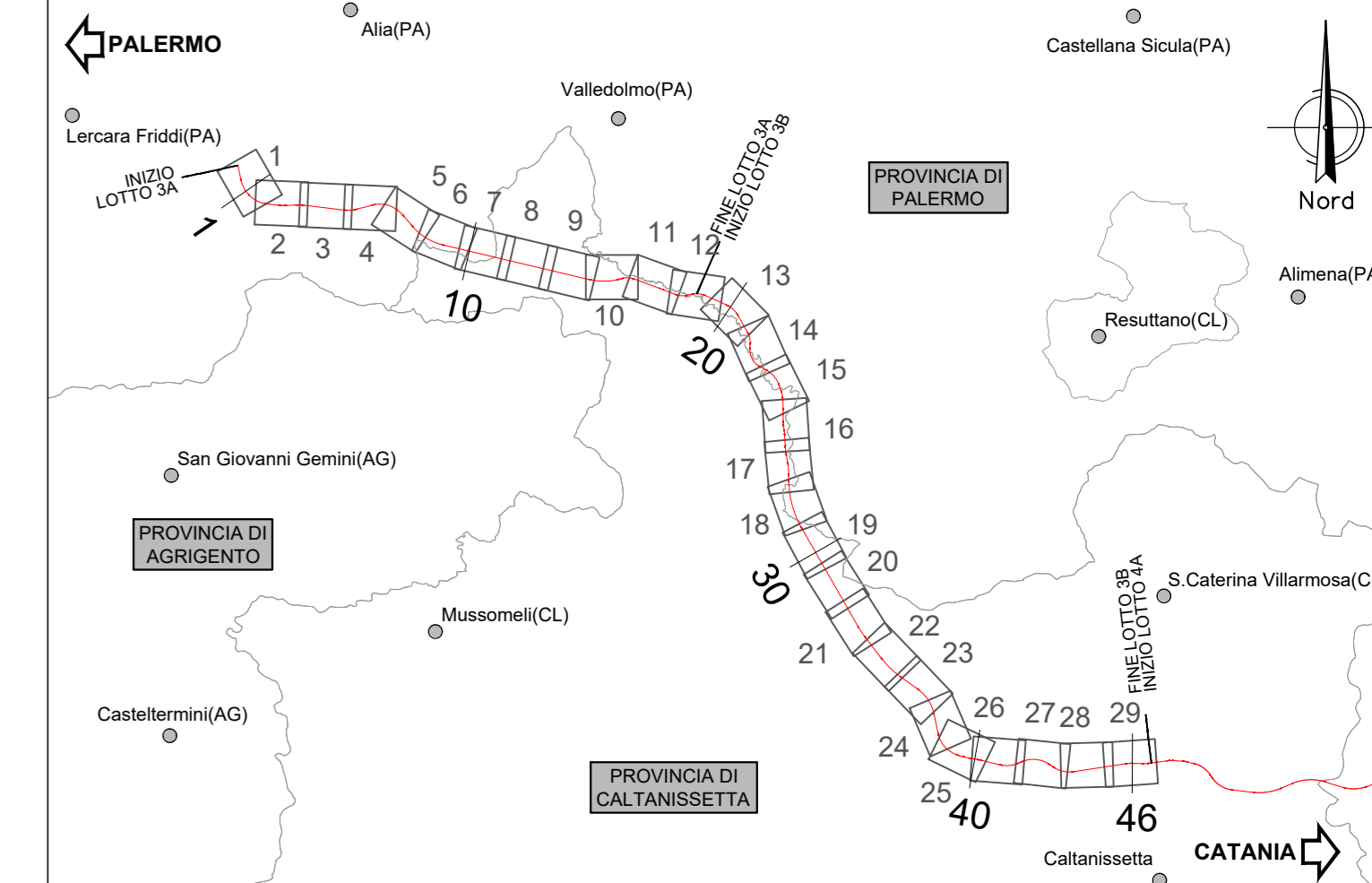
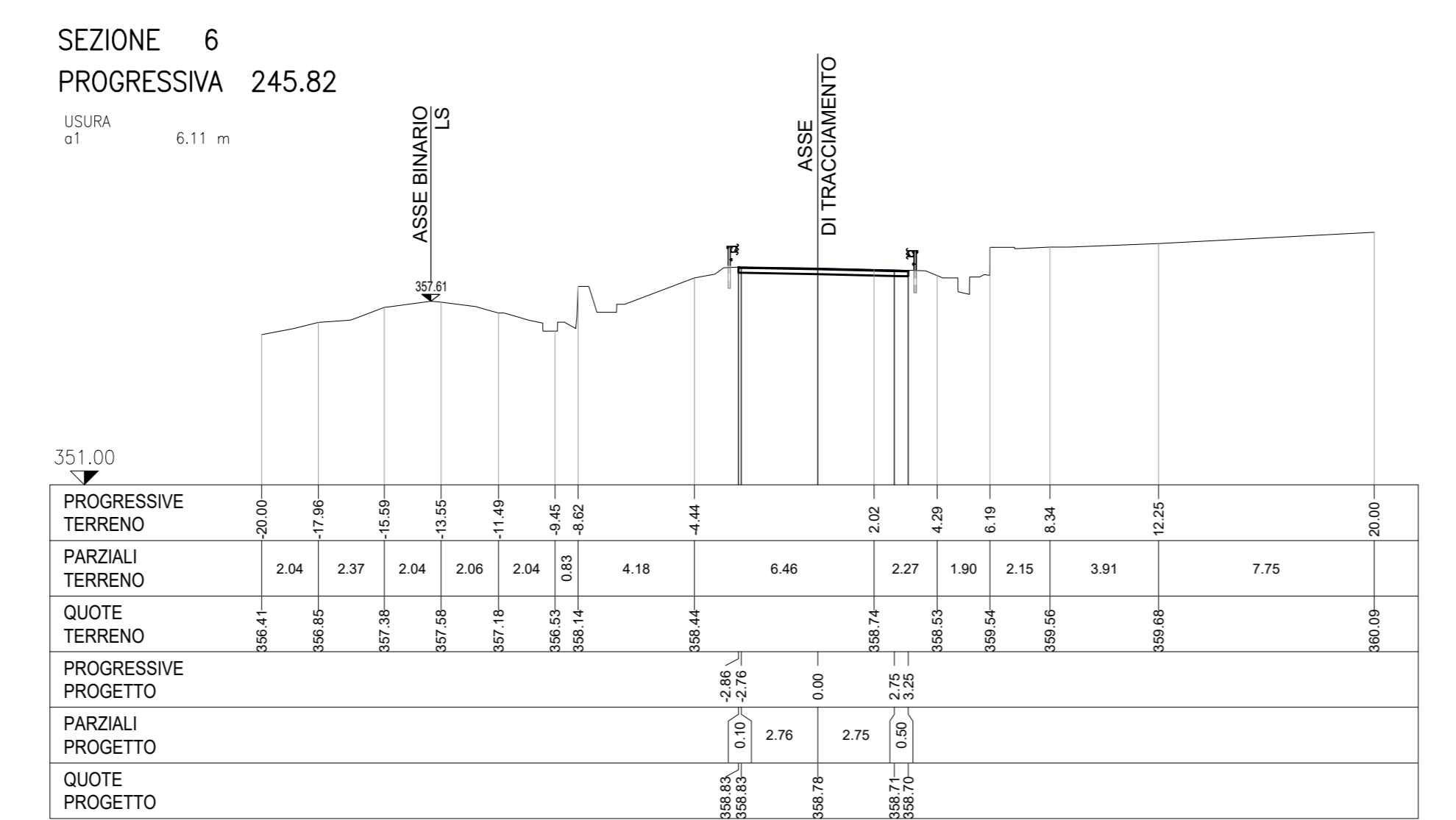
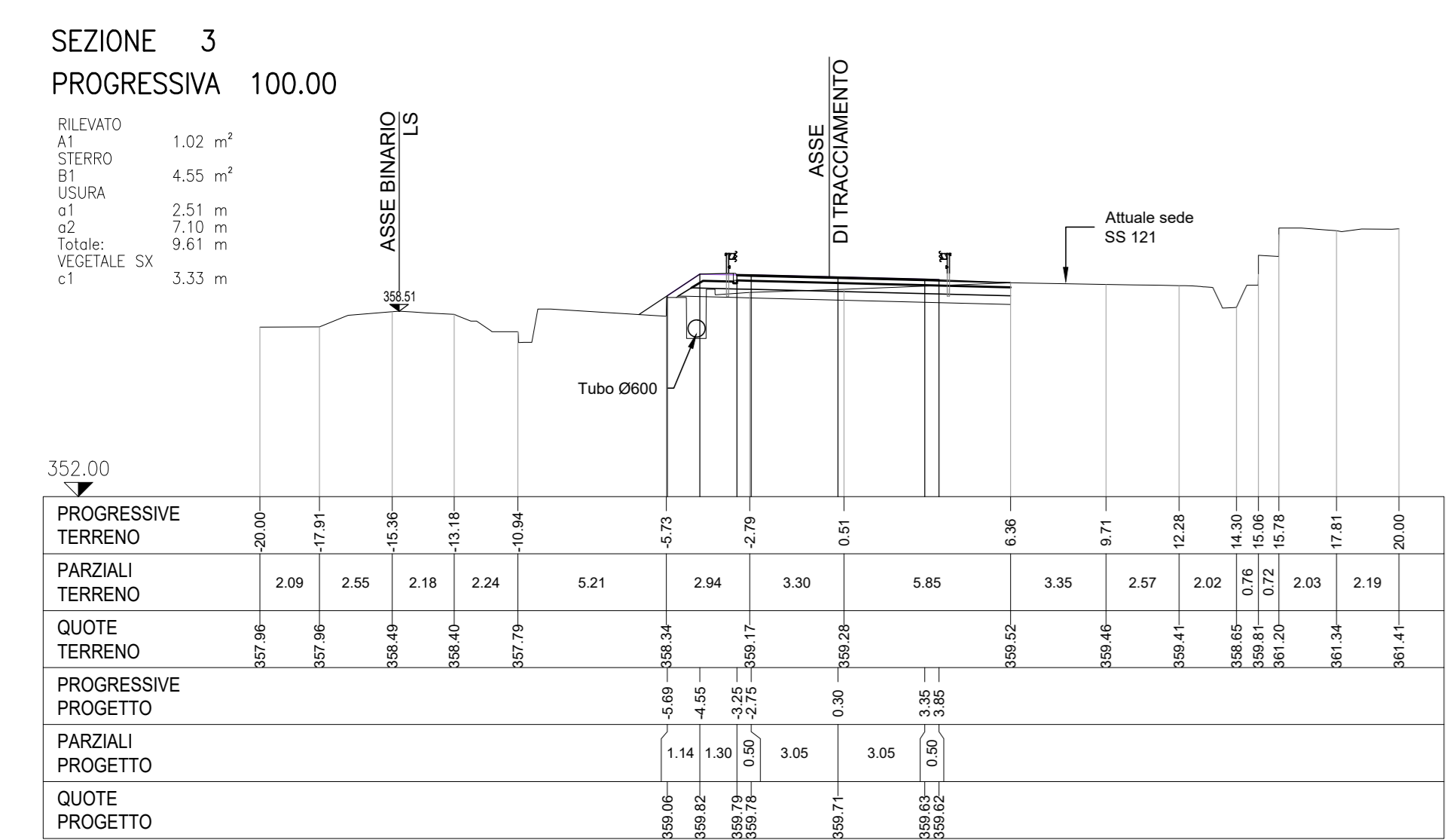
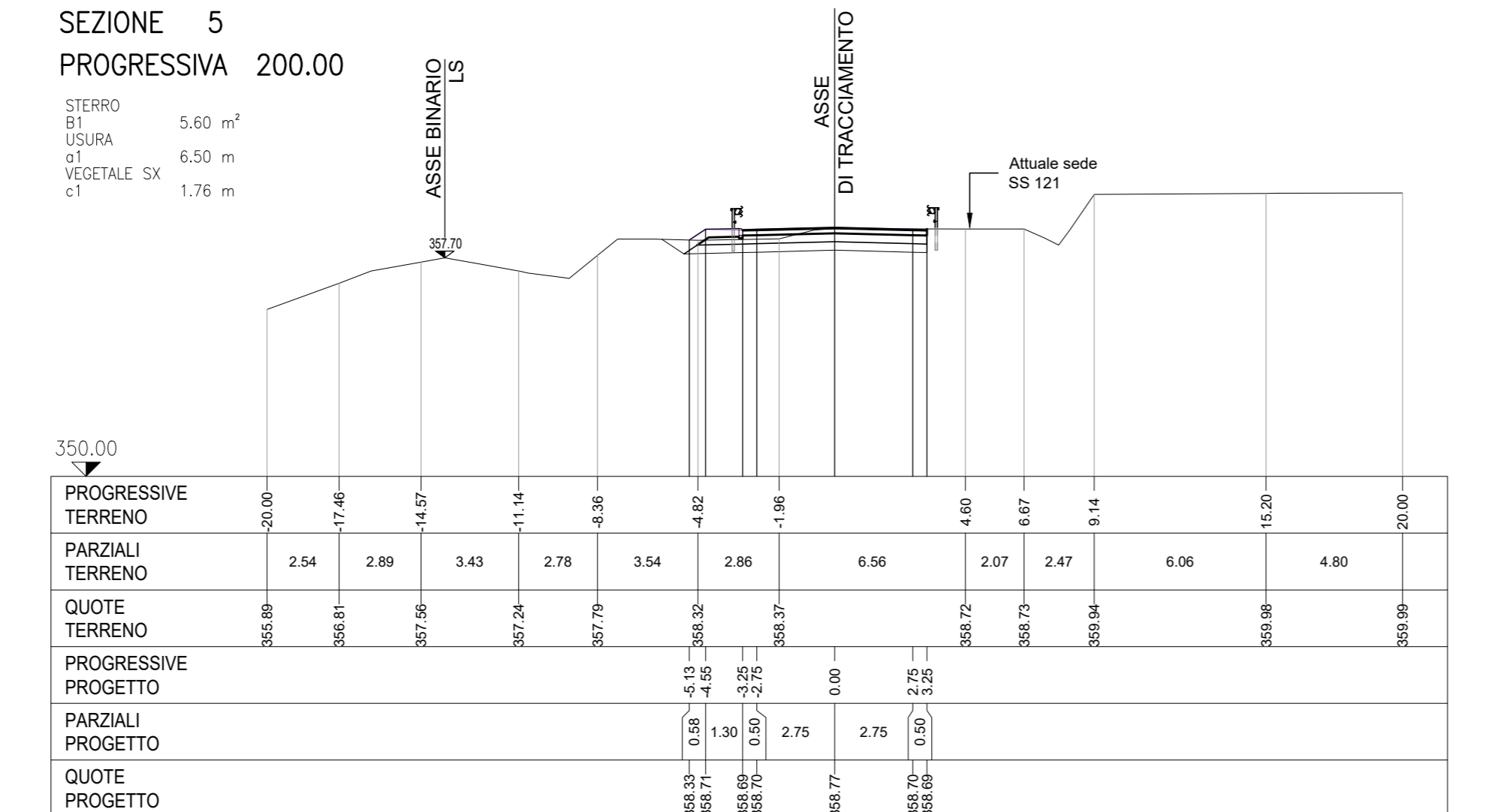
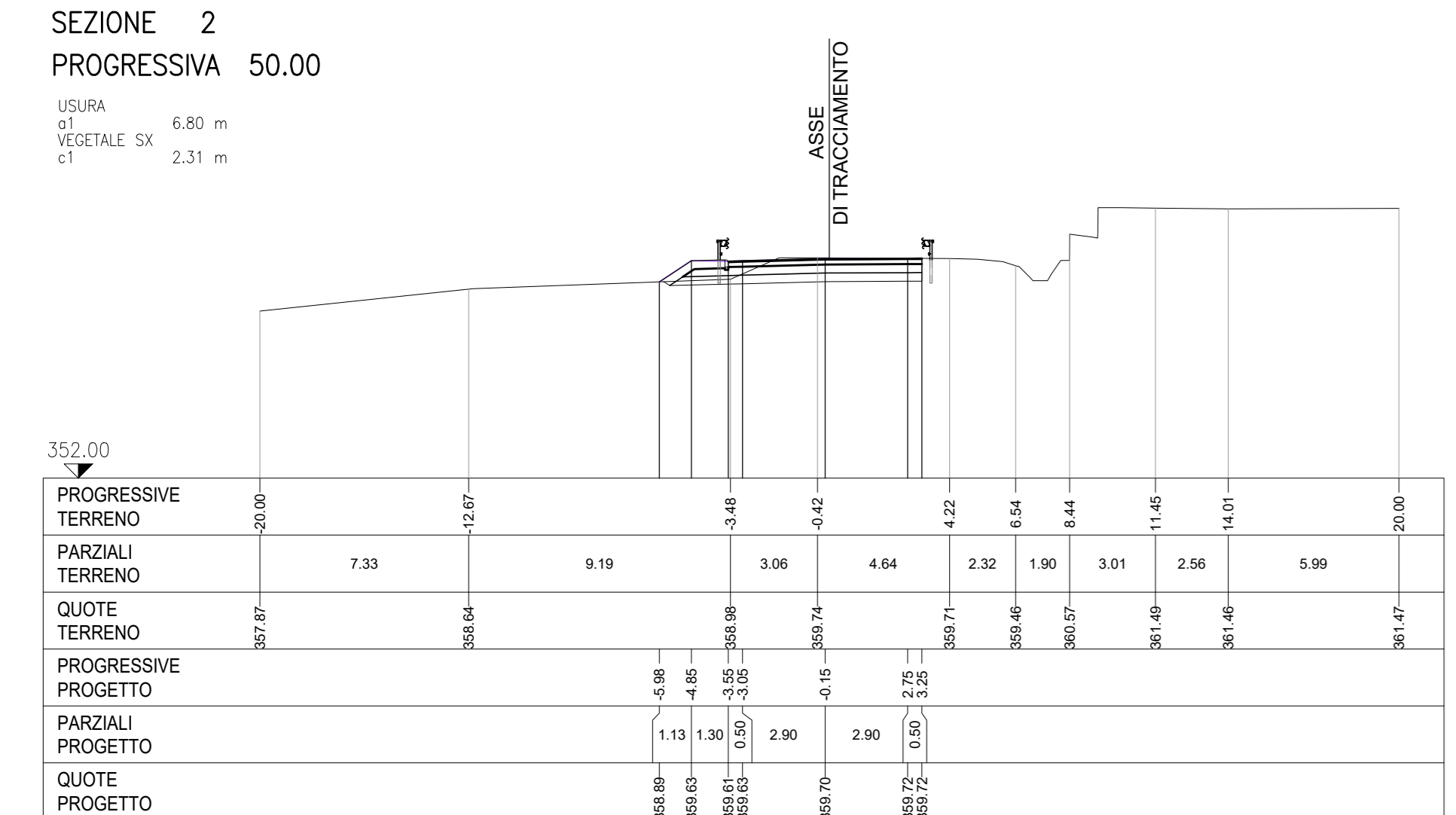
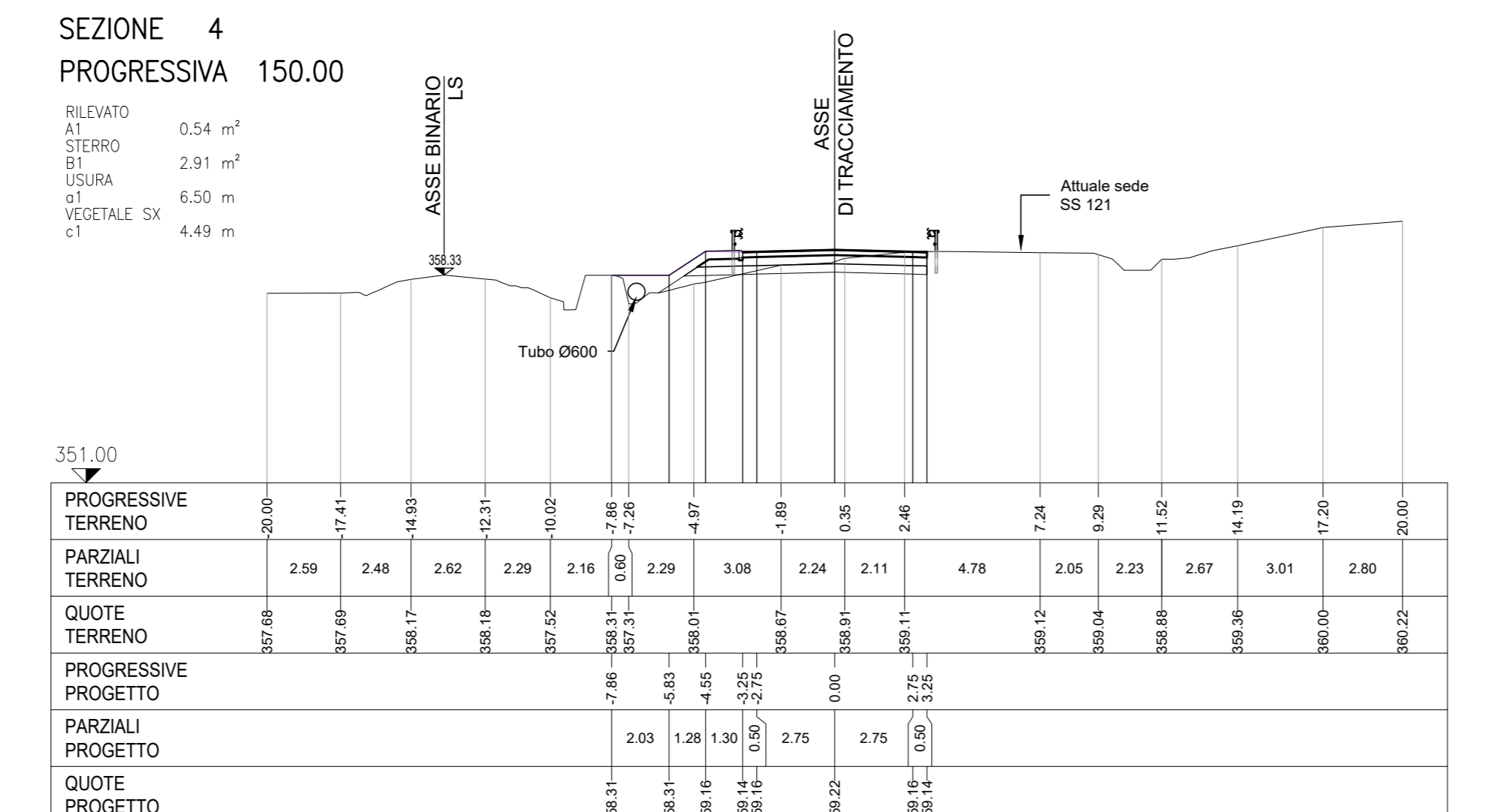
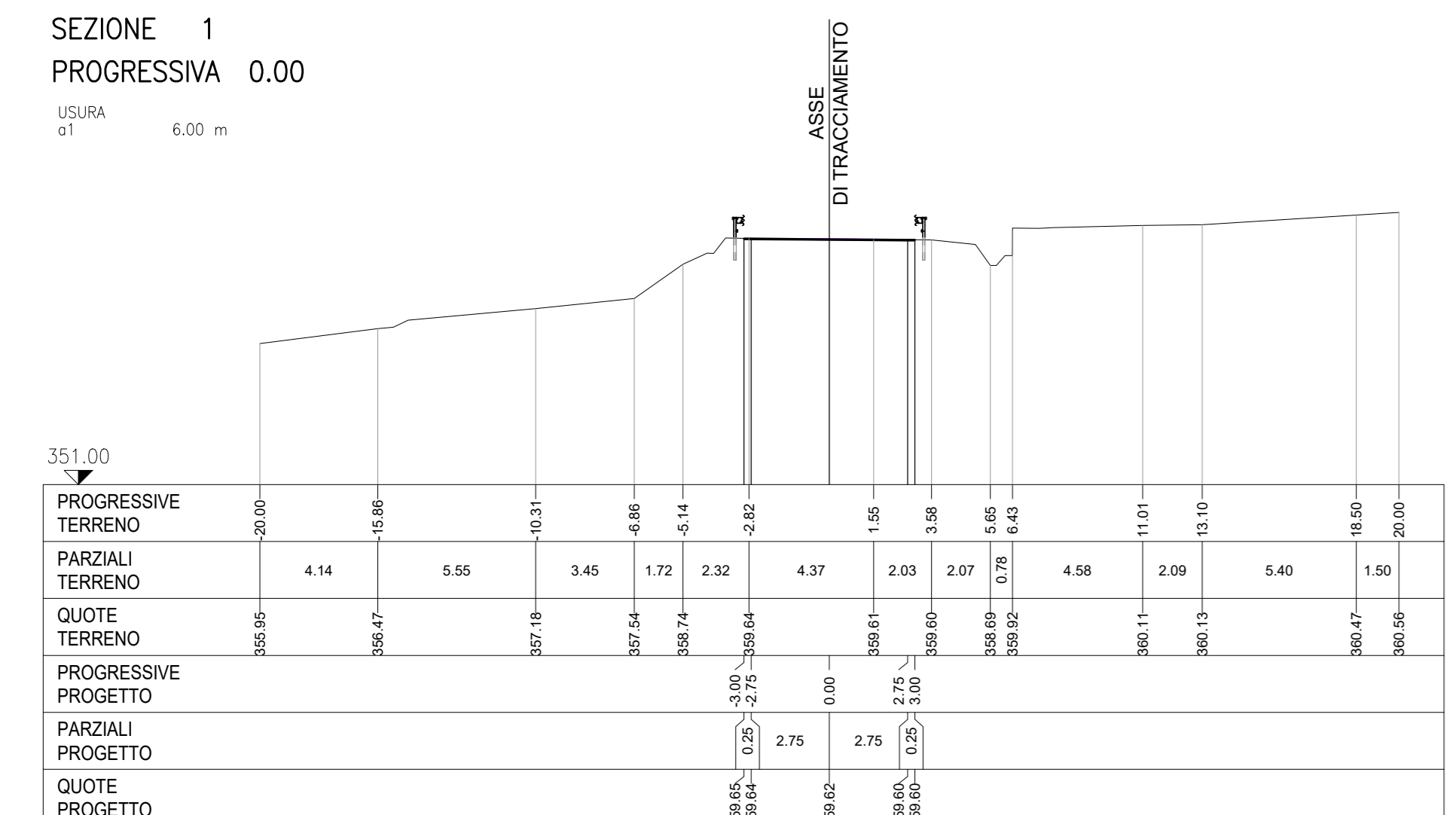


**PLANIMETRIA**  
SCALA 1:1000

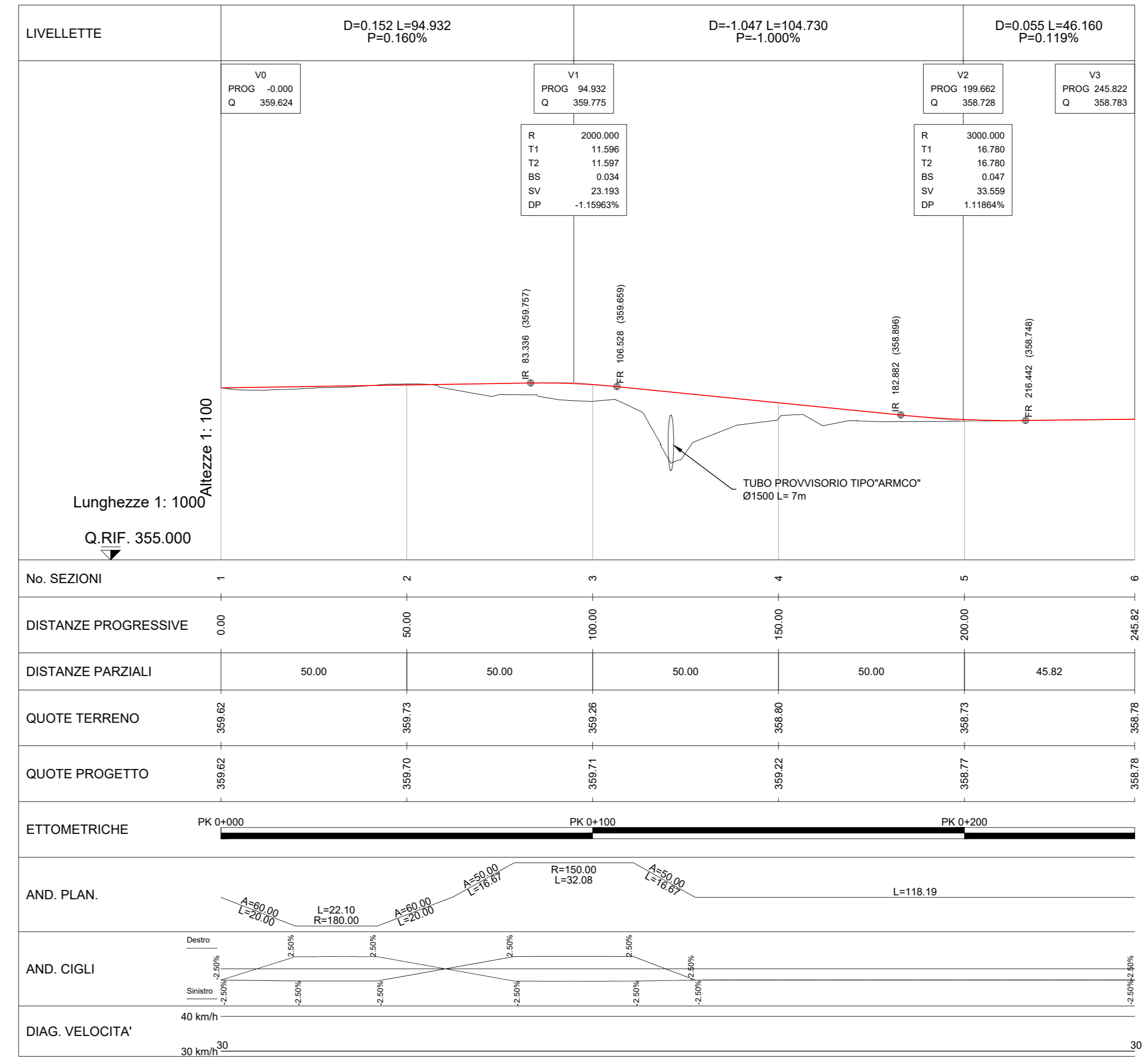


**LEGENDA:**

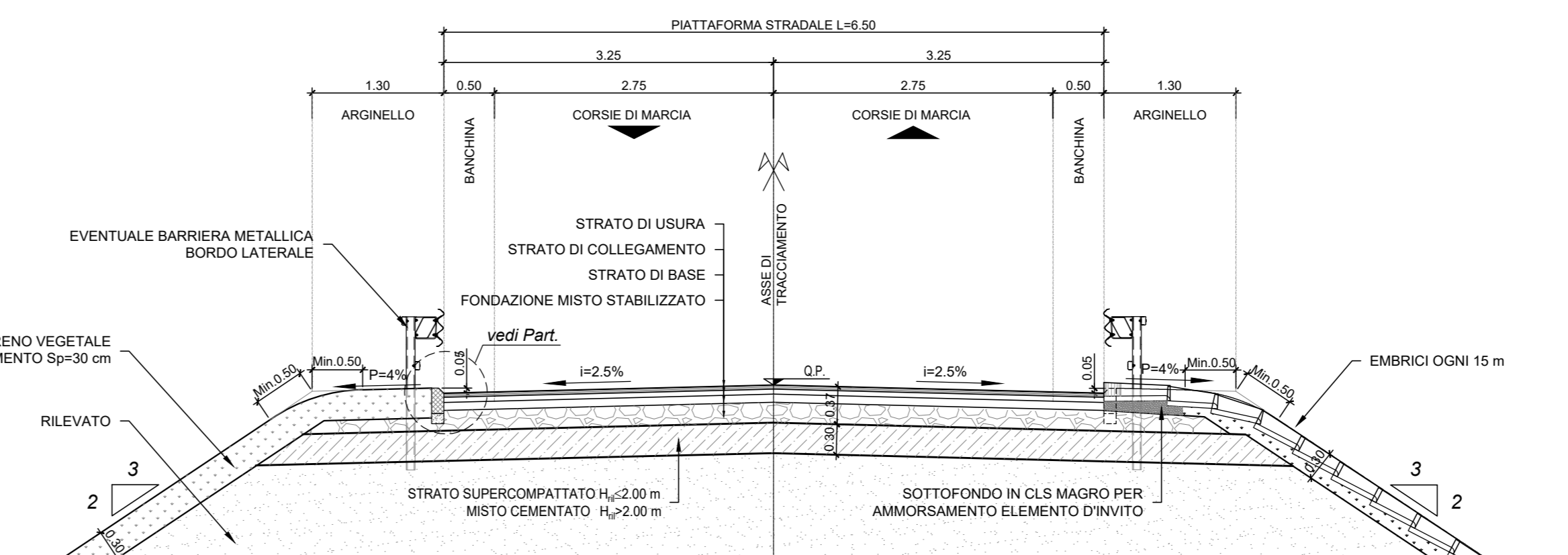
Asse linea storica	
Asse VLS MF1	
Asse Linea Veloce	



**PROFILO LONGITUDINALE**  
SCALA 1:1000/100



**SEZIONE TIPO**  
SCALA 1:50



COMMITTENTE:  
**RFI**  
RETE FERROVIARIA ITALIANA  
GRUPPO FERROVIE DELLO STATO ITALIANE

PROGETTAZIONE:  
**ITALFER**  
SUPER INFRASTRUTTURE FERROVIARIE

**DIRETTRICE FERROVIARIA MESSINA - CATANIA - PALERMO**  
**NUOVO COLLEGAMENTO PALERMO - CATANIA**

**U.O. INFRASTRUTTURE SUD**  
**PROGETTO DEFINITIVO**  
**TRATTA LERCARA DIR. - CALTANISSETTA XIRBI (LOTTO 3)**

**INTERFERENZE IDRAULICHE**  
*IN59-Viabilità di riapertura per realizzazione tombino*  
*Planimetria di progetto con dati di tracciamento, profilo e sezioni deviazione provvisoria SS121*

SCALA: 1:1000

COMMESSA LOTTO FASE ENTE TIPO DOC. OPERA/DISCIPLINA PROGR. REV.

RS3T 30 D 78 L7 IN59X0 001 A

Rev.	Descrizione	Redatto	Data	Verificato	Data	Approvato	Data	Autorizzato Data
A	Emissione Esecutiva	...	Feb-2020	...	Feb-2020	...	Feb-2020	...

File: RS37.3.0.D.78.L7.IN.59.X.0.001.A n. Elab.: 78\_540\_2