

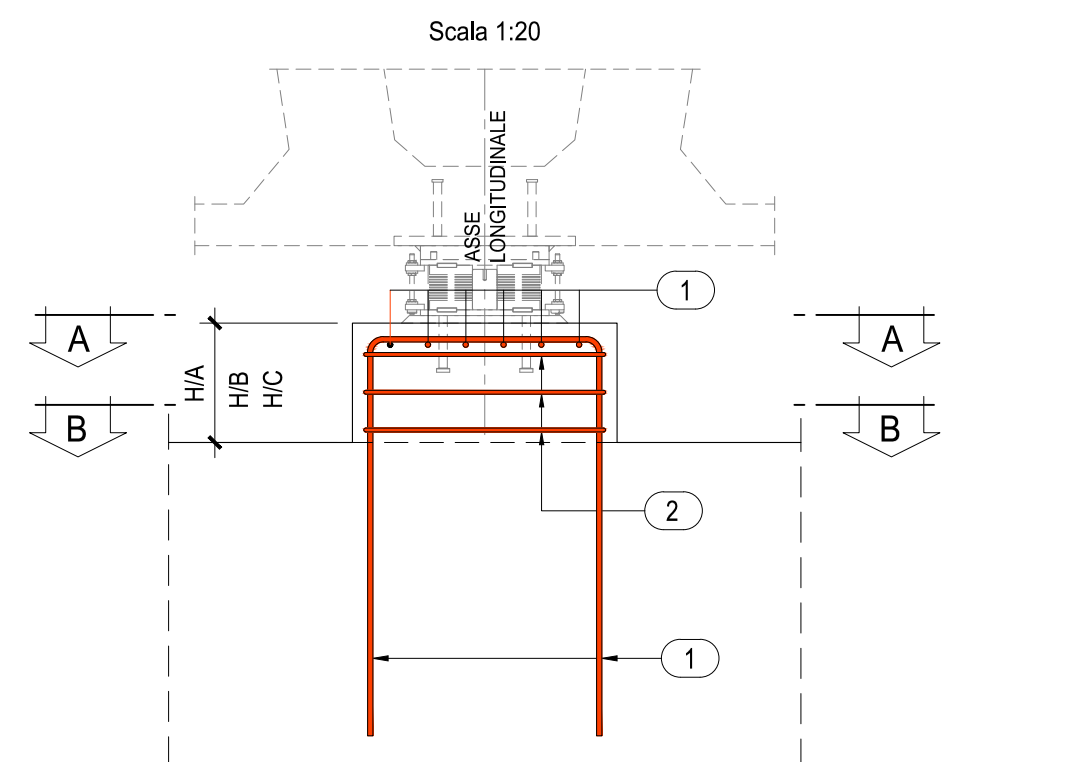
CARATTERISTICHE DEI MATERIALI

- TUTTI I MATERIALI DEVONO ESSERE CONFORMI AL D.M. 14.01.2008
- CALCESTRUZZO MAGRO PER SOTTOFONDO
- CONFORME ALLA EN 206-1:2005
- CLASSE DI RESISTENZA MINIMA A COMPRESIONE: C 12/15
- CALCESTRUZZO PER GETTO IN OPERA ELEVAZIONI SPALLE E PILE
- A PRESTAZIONE GARANTITA CONFORME ALLA UNI EN 206-1:2006
- CLASSE DI RESISTENZA MINIMA A COMPRESIONE: C 28/35
- CLASSE DI CONSISTENZA SLUMP: S4
- CLASSE DI ESPOSIZIONE: XC2(0)
- DIMENSIONE MASSIMA DEGLI AGGREGATI: Dmax 31
- CLASSE DI CONTENUTO IN CLORURI: Cl 0,20
- RAPPORTO A/C MAX: 0,60
- CONTENUTO MINIMO DI CEMENTO 280 Kg/m³
- COPRIFERRO: 50mm
- COPRIFERRO BAGGIOLI: 30mm

- ACCIAIO DI ARMATURA
- ARMATURA ORDINARIA: B450C

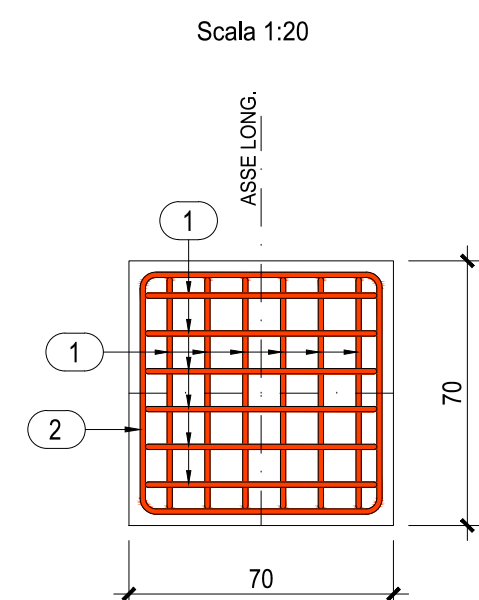
SPALLA "SPN" - PILE "P3N" - "P4N.1"
ARMATURA BAGGIOLI

SEZIONE TRASVERSALE

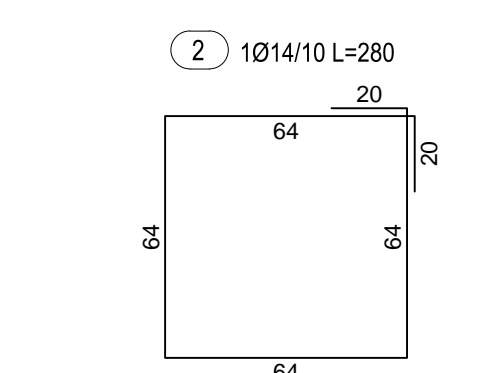
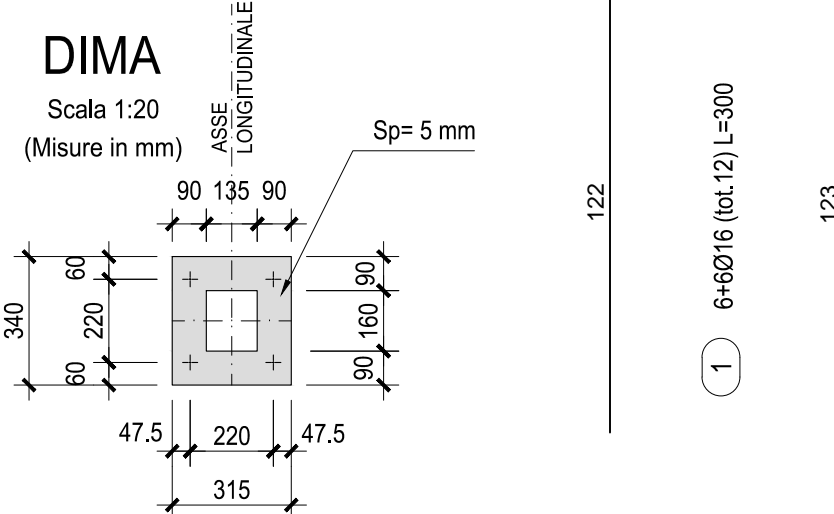
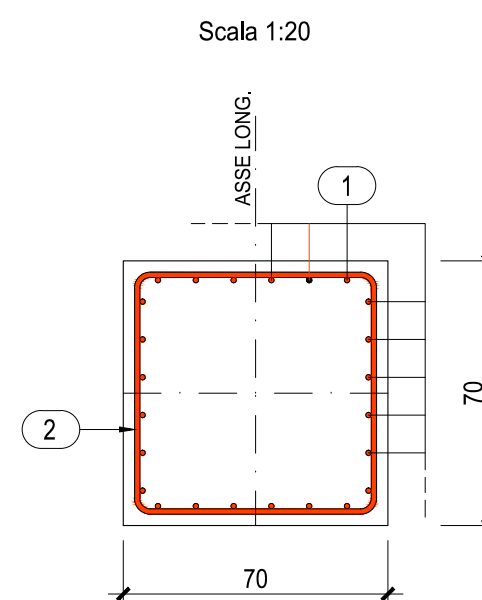


	HA (mm)	HB (mm)	HC (mm)
APP. "SPN.2"	322	410	476
APP. "P3N.1"	423	363	292
APP. "P3N.2"	467	407	355
APP. "P4N.1"	422	363	303

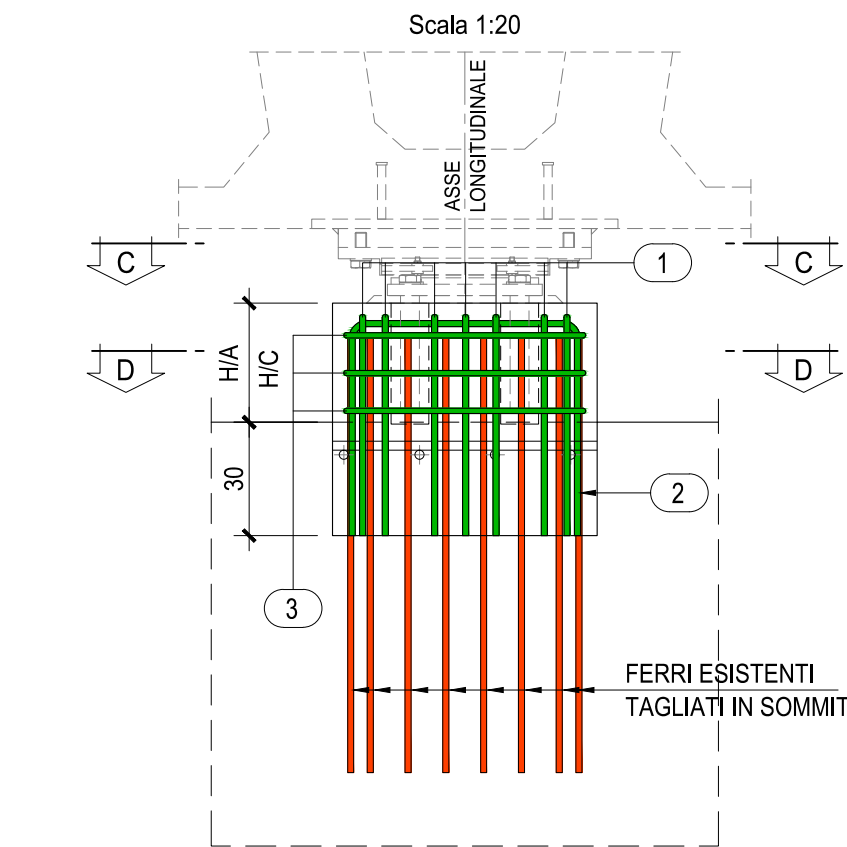
SEZIONE ORIZZONTALE A-A



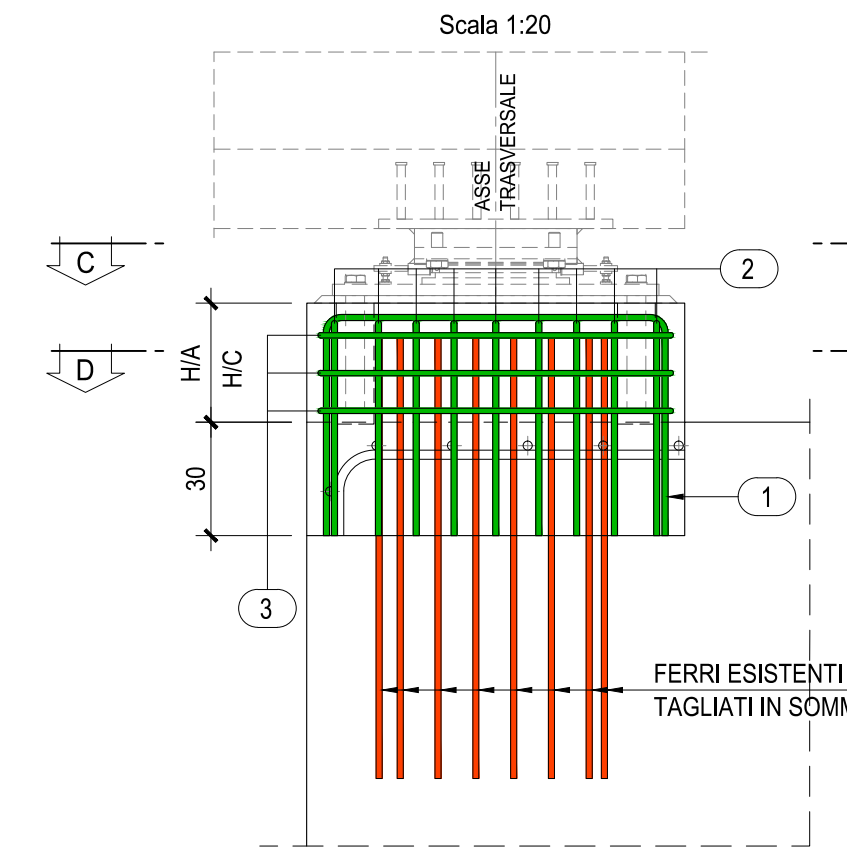
SEZIONE ORIZZONTALE B-B



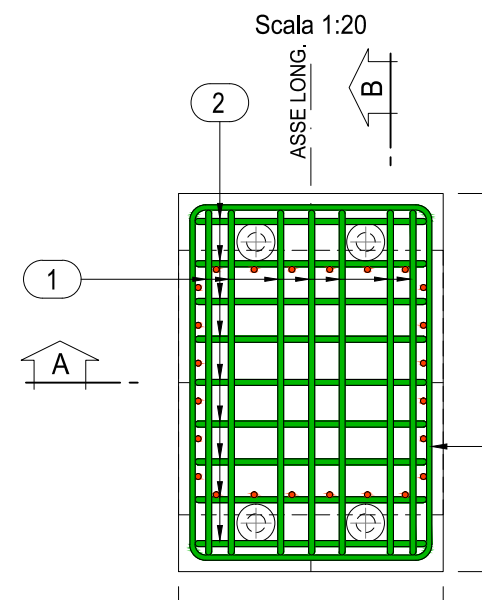
SEZIONE A-A



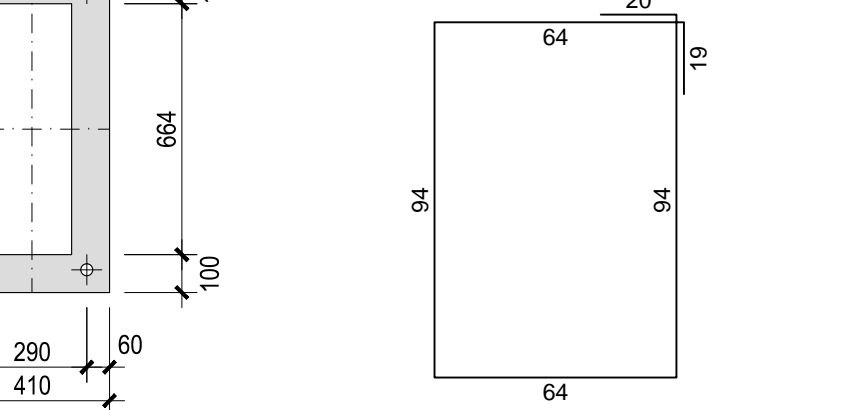
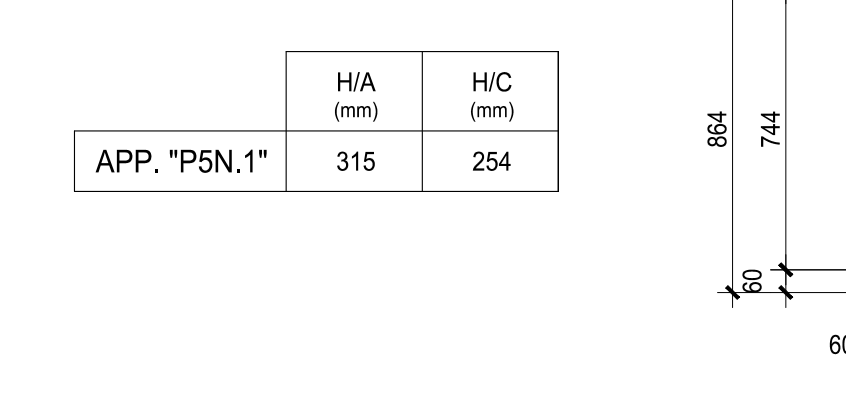
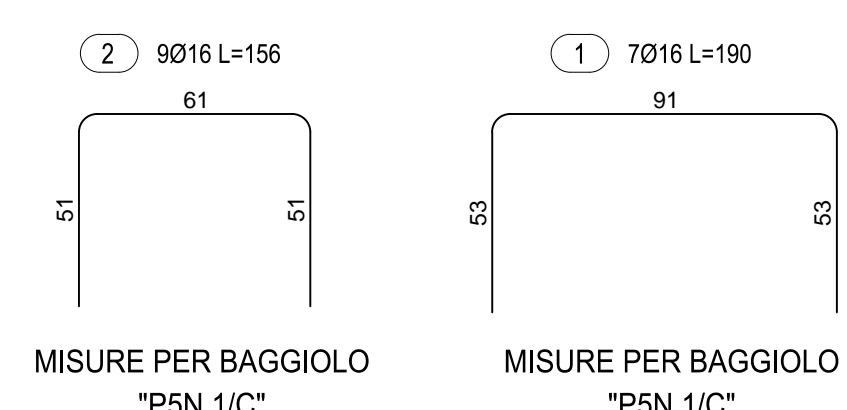
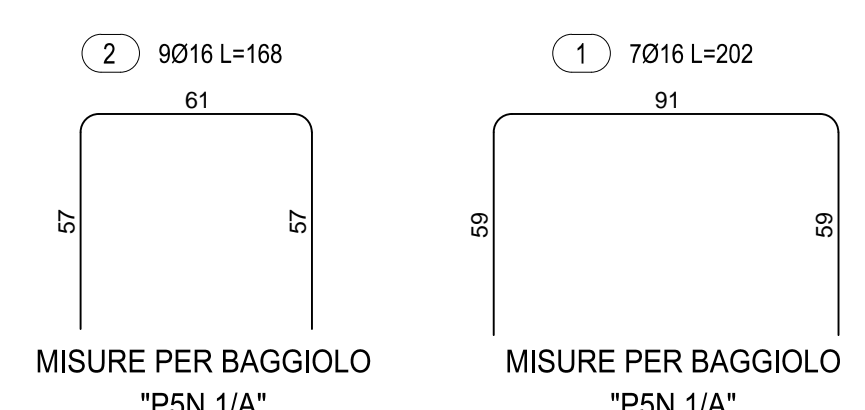
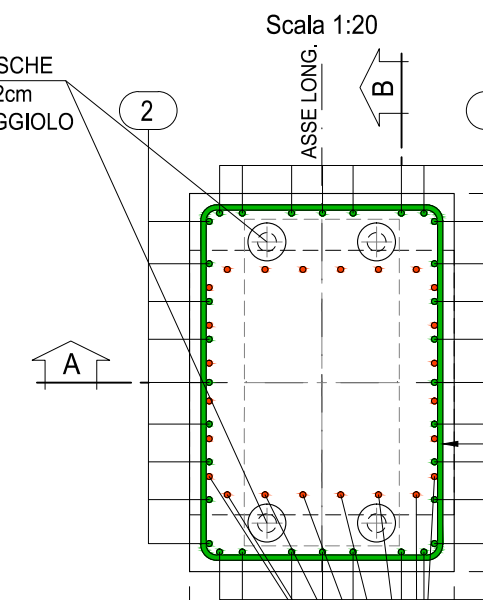
SEZIONE B-B



SEZIONE ORIZZONTALE C-C



SEZIONE ORIZZONTALE D-D



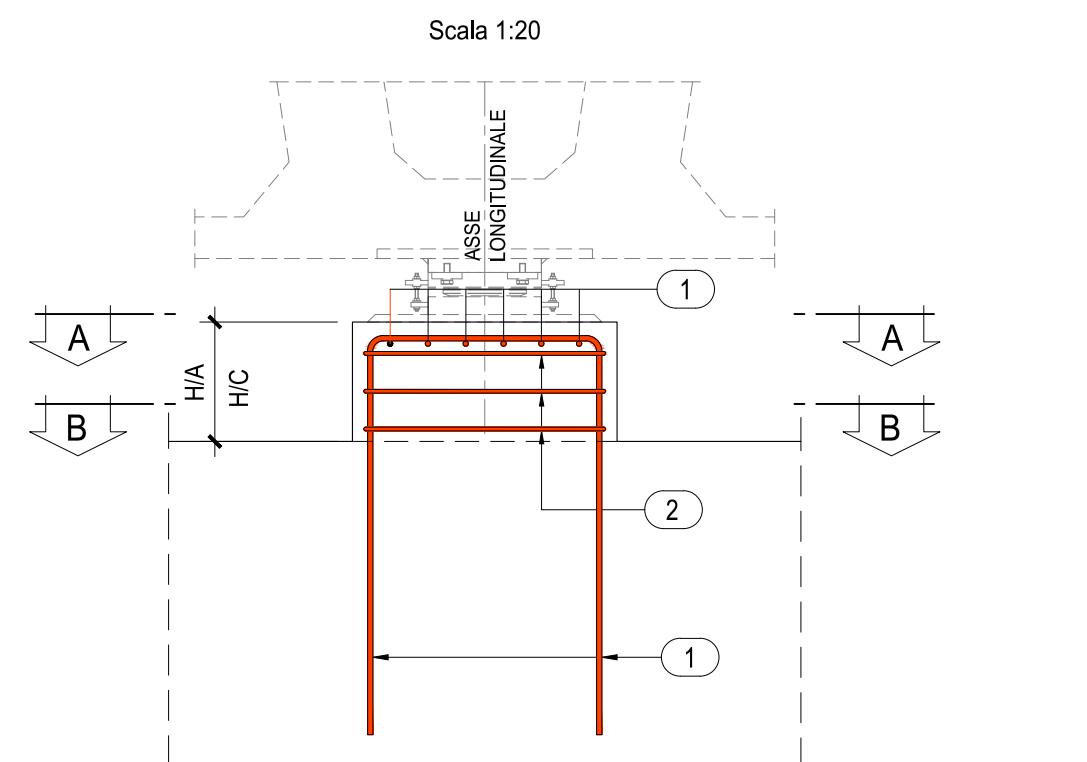
LEGENDA MISURE FERRI

DIAMETRO BARRA (D)	DIAMETRO MANDRINO (Dm)
≤ 16	40
> 16	70

NOTA BENE: LE MISURE PARZIALI INDICATE SULLA BARRA RAPPRESENTANO LA GEOMETRIA ESTERNA DELLA SINGOLA LA LUNGHEZZA TOTALE DELLA BARRA RAPPRESENTA LO SVILUPPO COMPLESSIVO MISURATO LUNGO L'ASSE BARICENTRICO

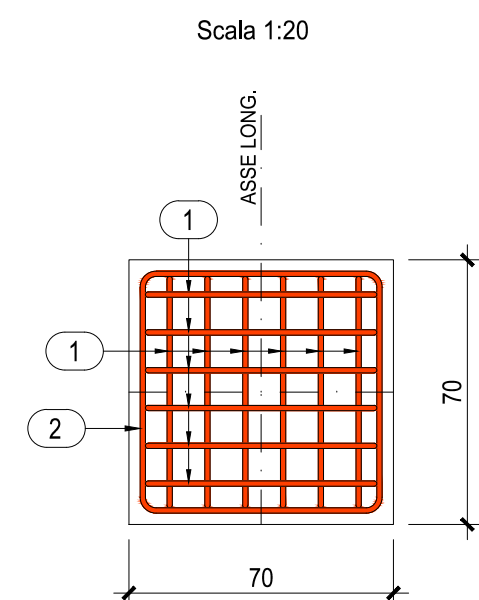
PILE "P4N.2"
ARMATURA BAGGIOLI "P4N.2/A" - "P4N.2/C"

SEZIONE TRASVERSALE

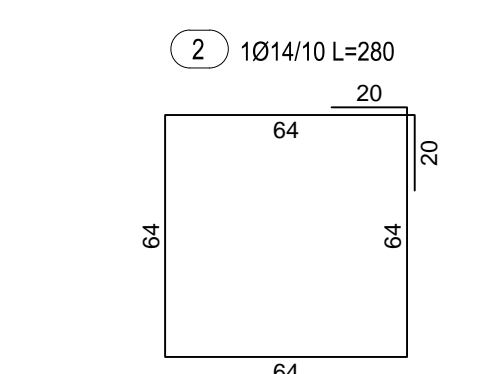
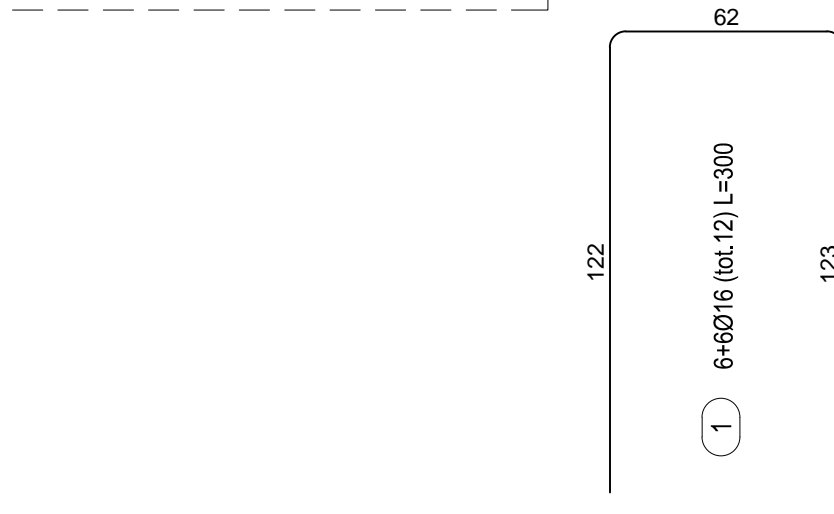
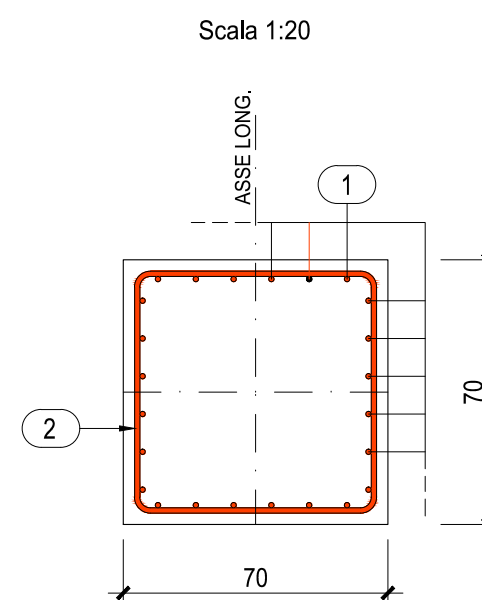


	HA (mm)	HC (mm)
APP. "P4N.2"	474	357

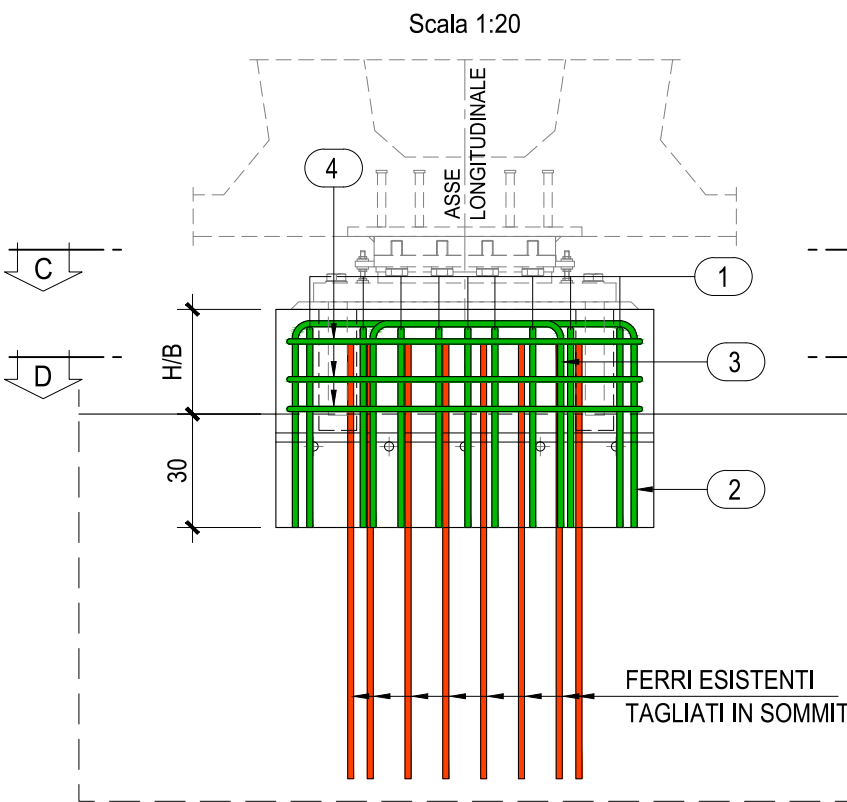
SEZIONE ORIZZONTALE A-A



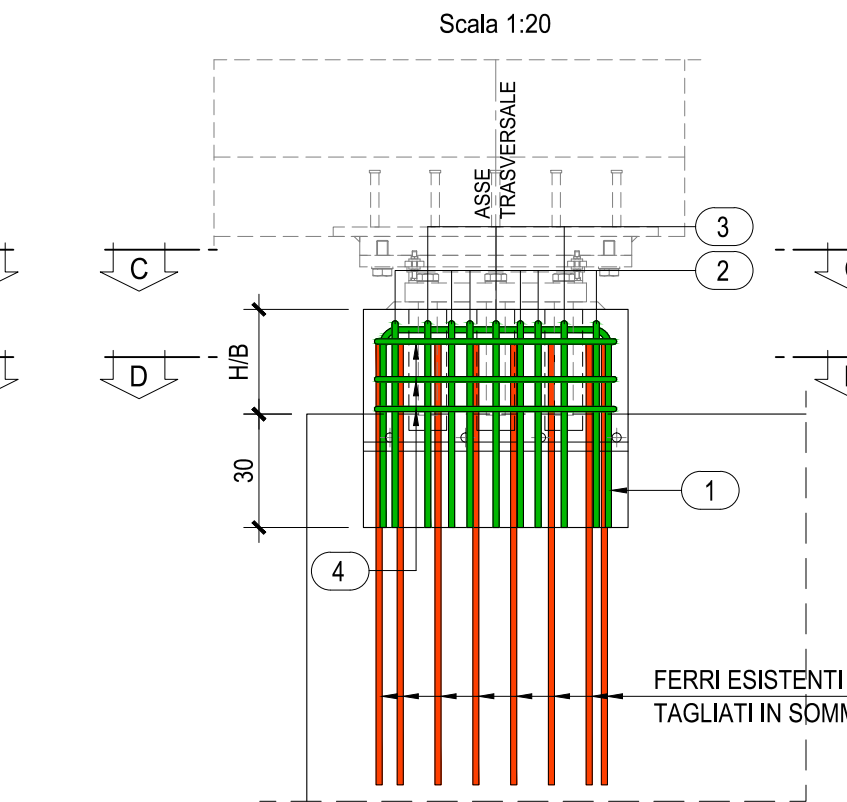
SEZIONE ORIZZONTALE B-B



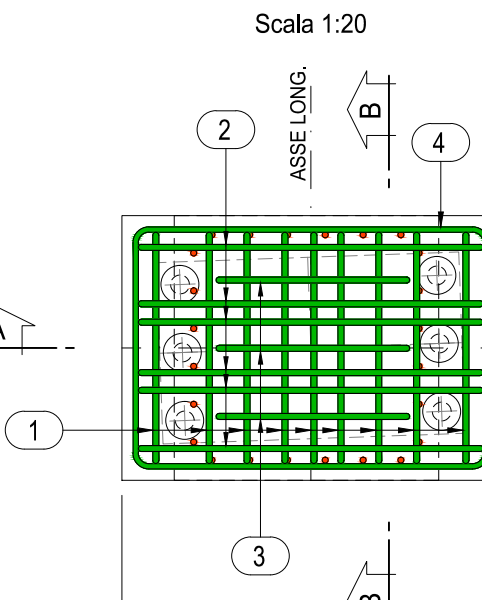
SEZIONE A-A



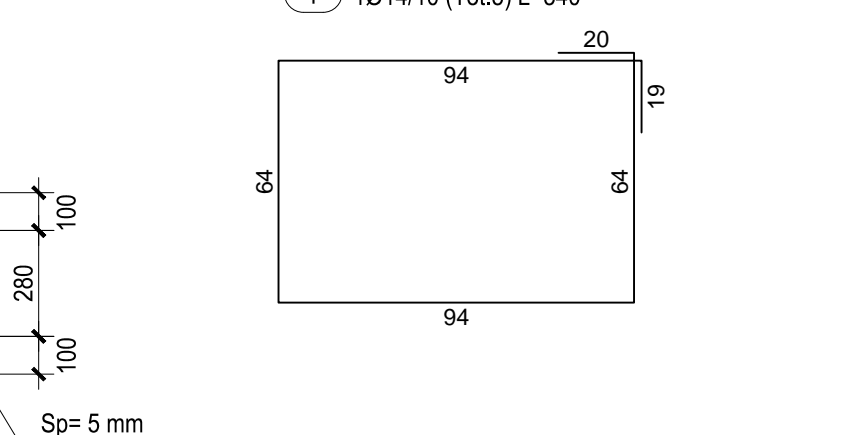
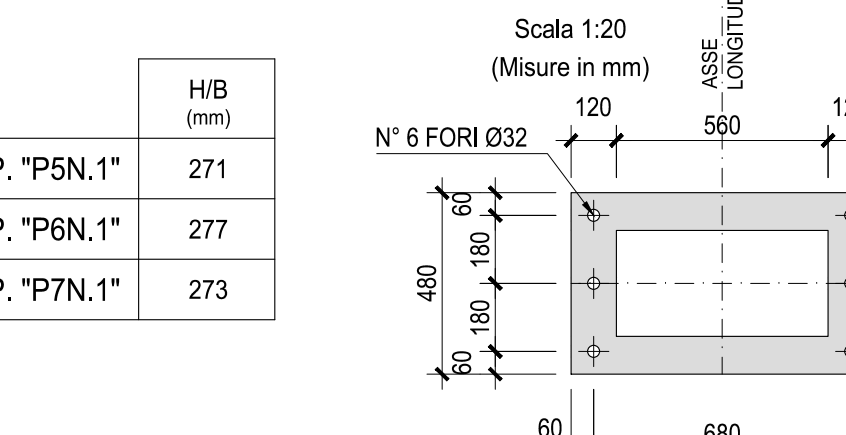
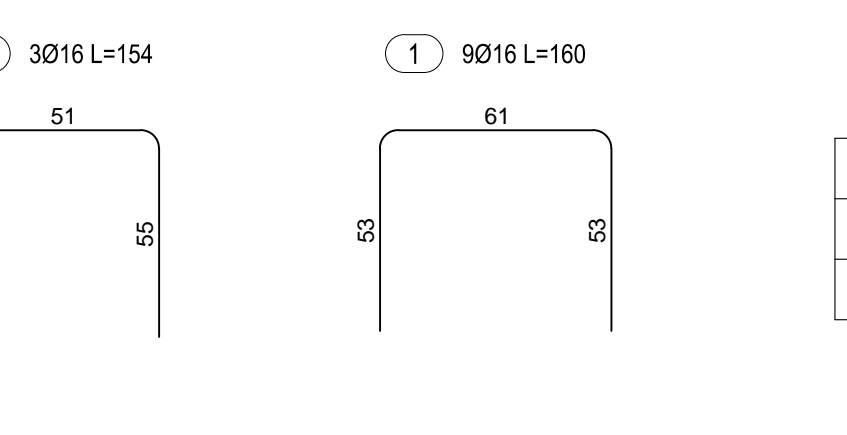
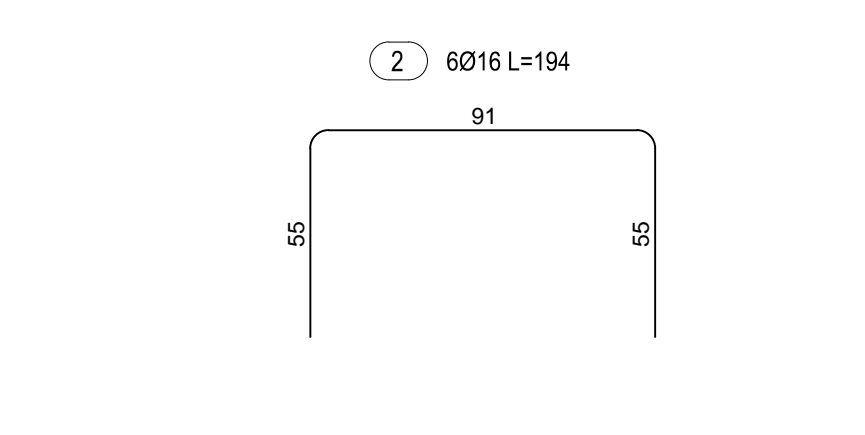
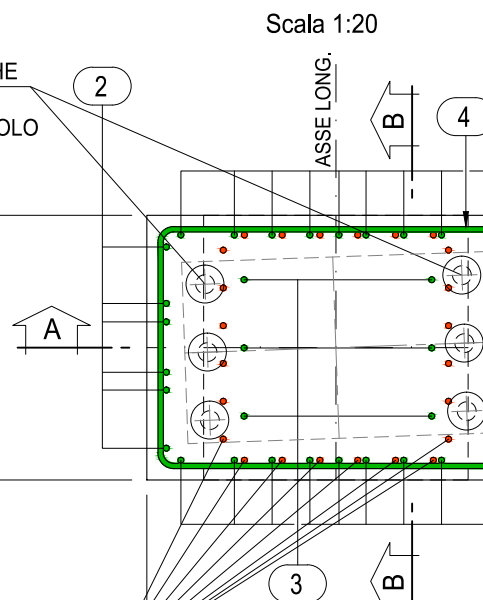
SEZIONE B-B



SEZIONE ORIZZONTALE C-C

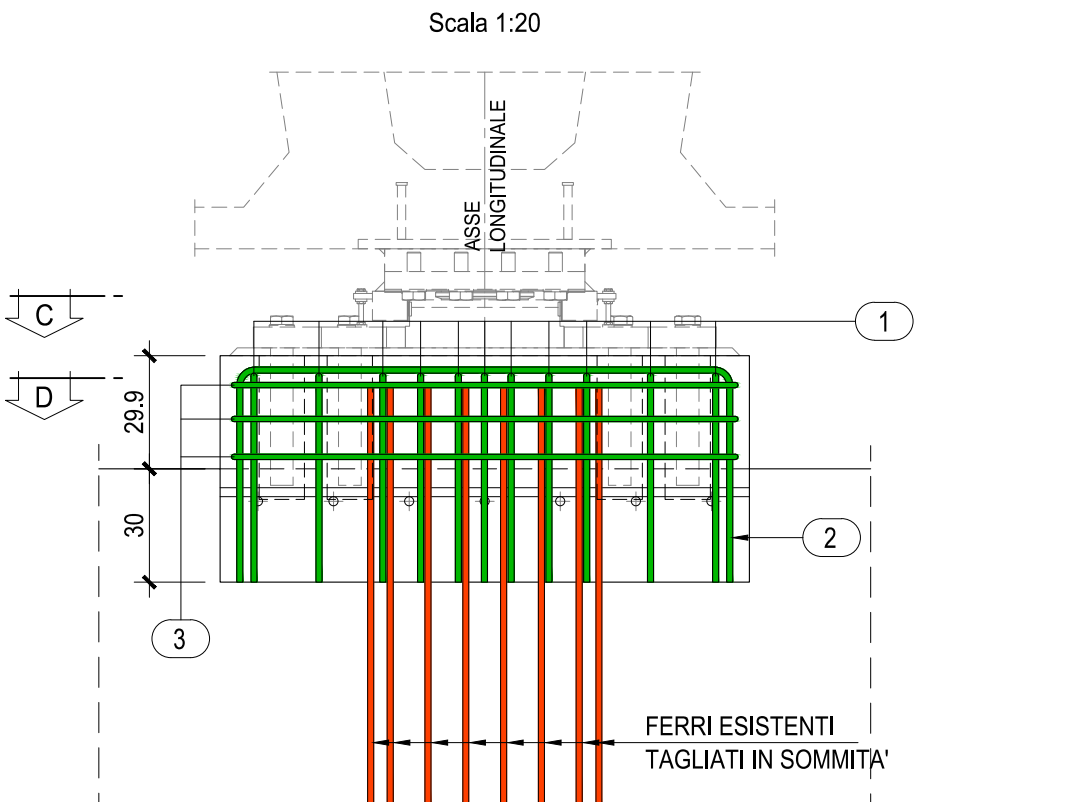


SEZIONE ORIZZONTALE D-D

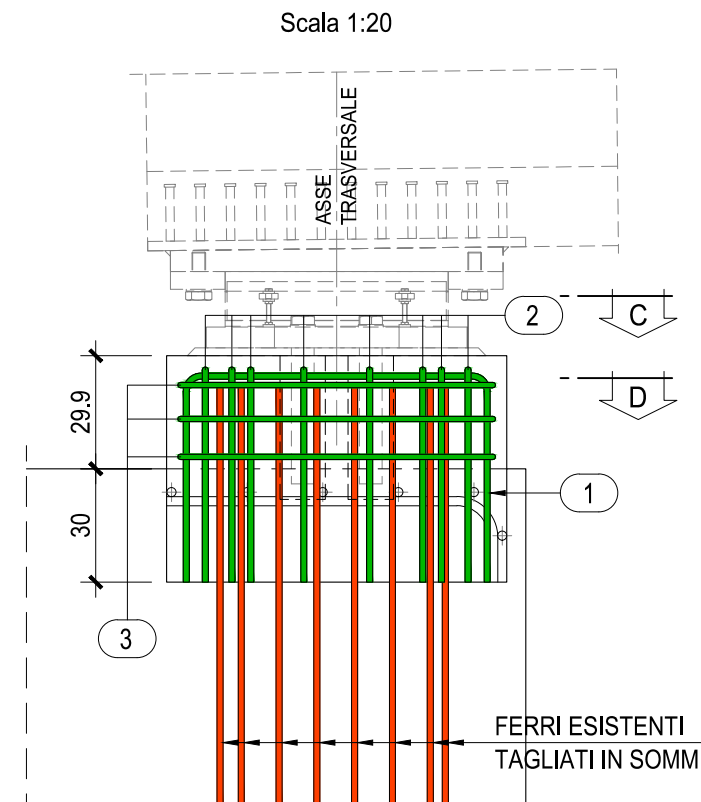


PILE "P4N.2"
ARMATURA BAGGIOLI "P4N.2/B"

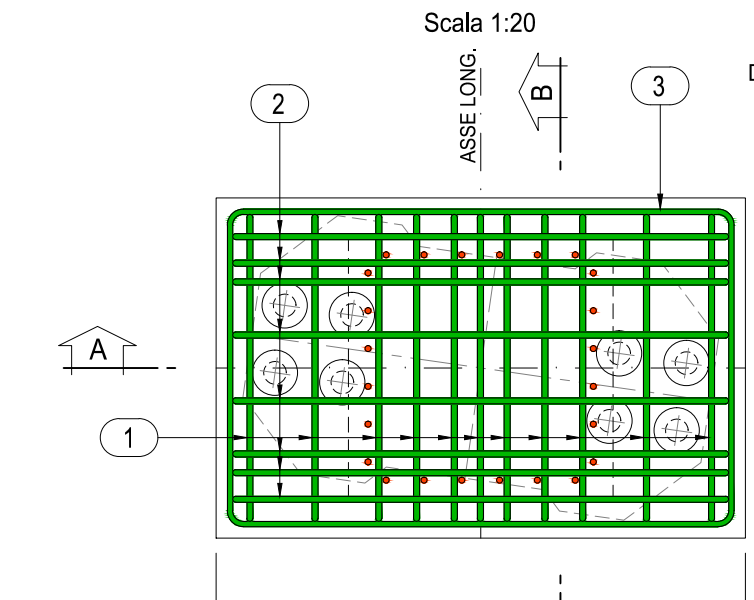
SEZIONE A-A



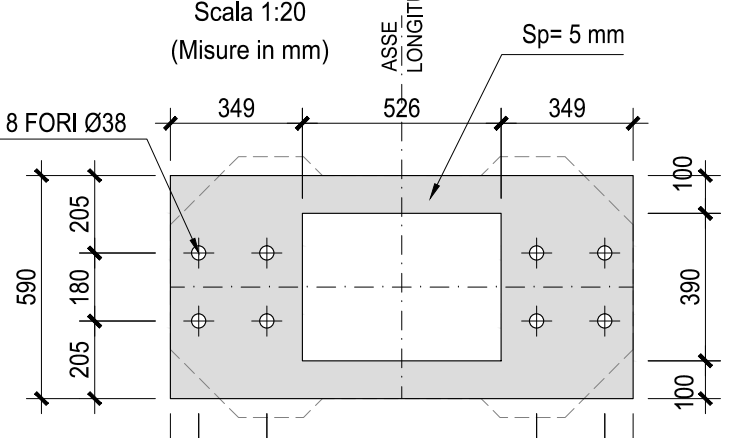
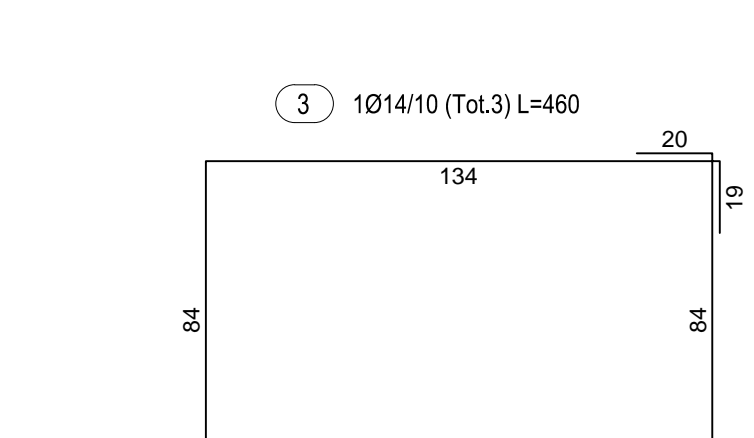
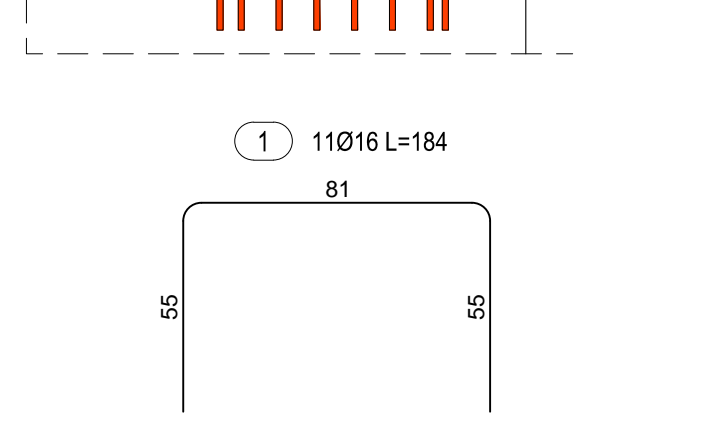
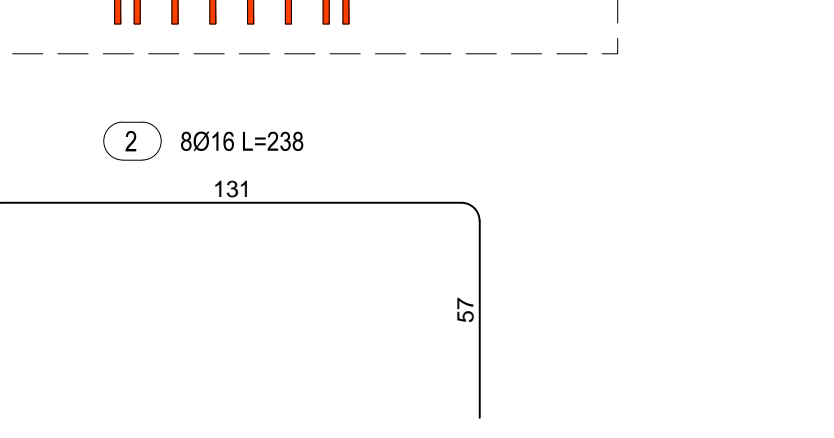
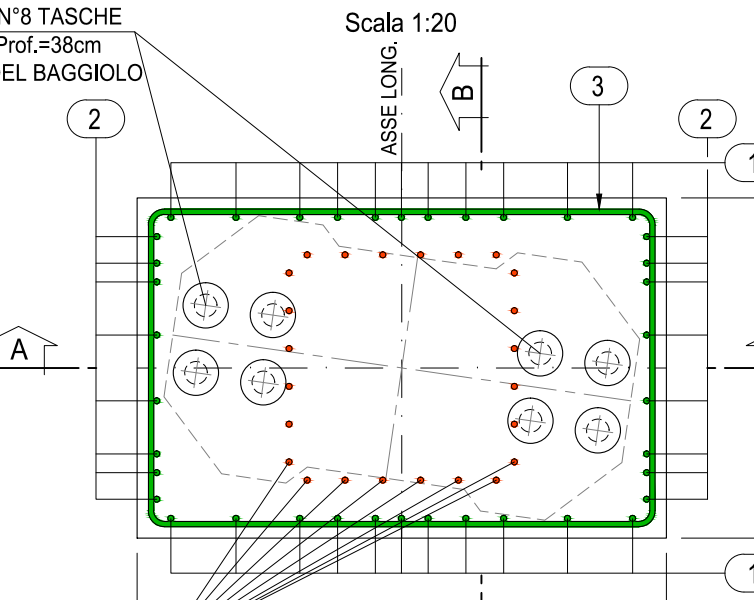
SEZIONE B-B



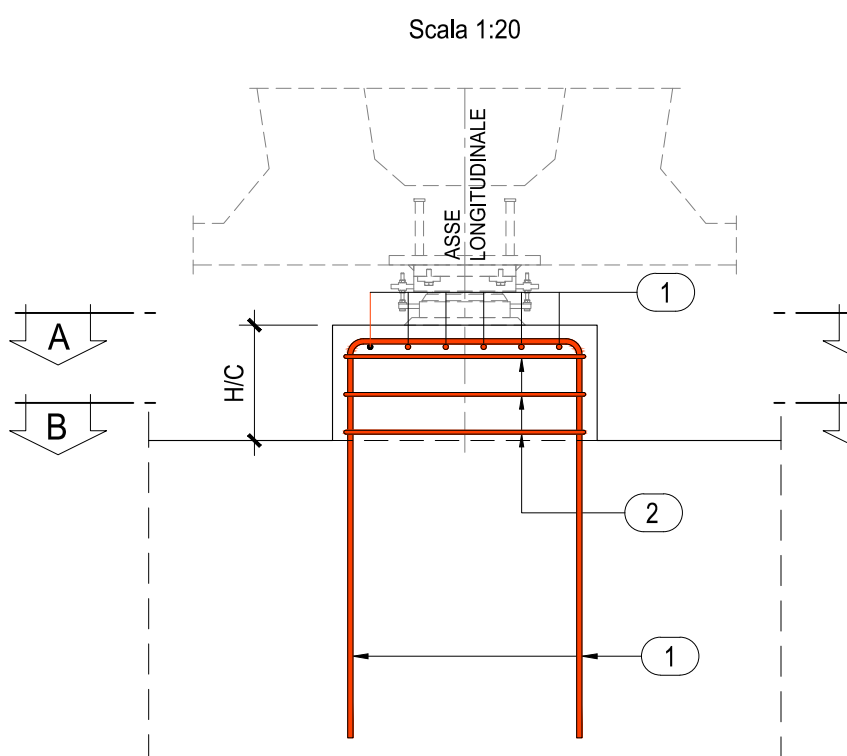
SEZIONE ORIZZONTALE C-C



SEZIONE ORIZZONTALE D-D



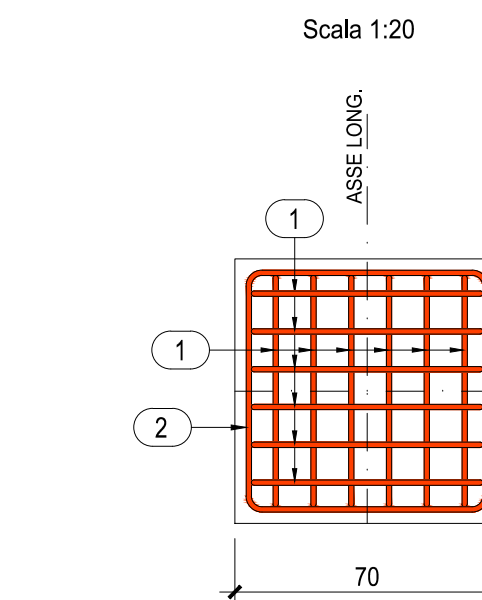
SEZIONE TRASVERSALE



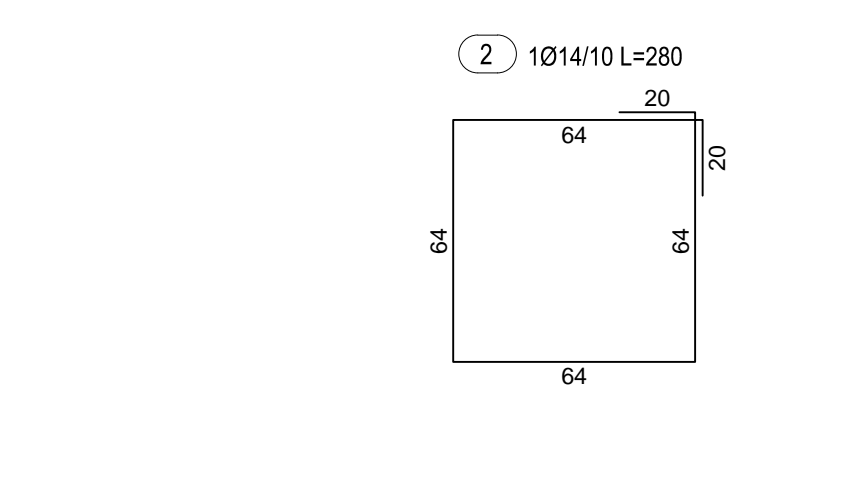
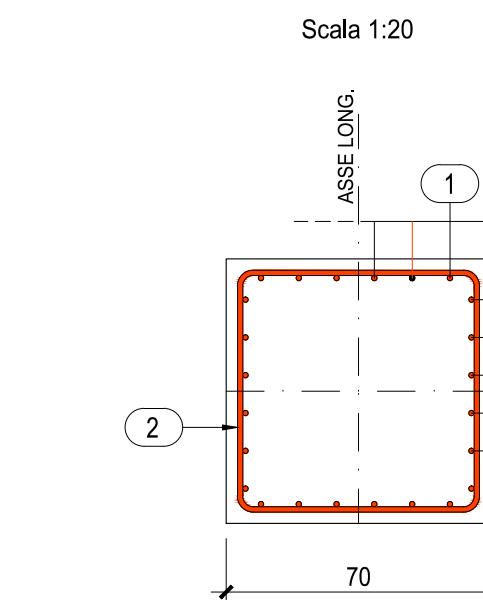
PILE "P5N" - "P6N" - "P7N"
ARMATURA BAGGIOLI "P5N.2/C" - "P6N.2/C" - "P7N.2/C"

	HC (mm)
APP. "P5N.2"	304
APP. "P6N.2"	305
APP. "P7N.2"	305

SEZIONE ORIZZONTALE A-A



SEZIONE ORIZZONTALE B-B



ANAS S.p.A.
Direzione Progettazione e Realizzazione Lavori

VARIANTE ALLA S.S.1 AURELIA (AURELIA BIS)
VIABILITA' DI ACCESSO ALL' HUB PORTUALE DI LA SPEZIA
INTERCONNESSIONE TRA I CASELLI DELLA A-12 E IL PORTO DI LA SPEZIA
3° LOTTO TRA FELETTINO E IL RACCORDO AUTOSTRADALE

PROGETTO ESECUTIVO DI STRALCIO E COMPLETAMENTO C - 3° TRATTO
PROGETTO ESECUTIVO **GE265**

VISTO IL RESPONSABILE DEL PROCEDIMENTO: Ing. Fabrizio CARONE

RESPONSABILE DELL'INTEGRAZIONE DELLE PRESTAZIONI SPECIALISTICHE: Ing. Alessandro RIZZO

PROGETTISTA SPECIALISTA: Ing. Paolo Alberto COLETTI

IL COORDINATORE DELLA SICUREZZA IN FASE DI PROGETTAZIONE: Dst. Donato TRABOLTI

OPERE MAGGIORI
SVINCOLO DI MELARA
VIADOTTO RAMPA "N"
ARMATURA BAGGIOLI PILE: "SPN" - "P3N" - "P4N" - "P5N" - "P6N" - "P7N" - TAV. 1/2

CODICE PROGETTO	NOVE FILE	REVISIONE	SCALA
DPGE0265	0000_V04V112STRCA02_B	B	1:20

REV.	DESCRIZIONE	DATA	REDATTO	VERIFICATO	APPROVATO
C					
B	REVISIONE A SEGUITO ISTRUTTORIA ANAS	Ottobre 2021	G. Naretto	A. Rodino	D. Morgera
A	EMMISSIONE	Marzo 2021	G. Naretto	A. Rodino	D. Morgera