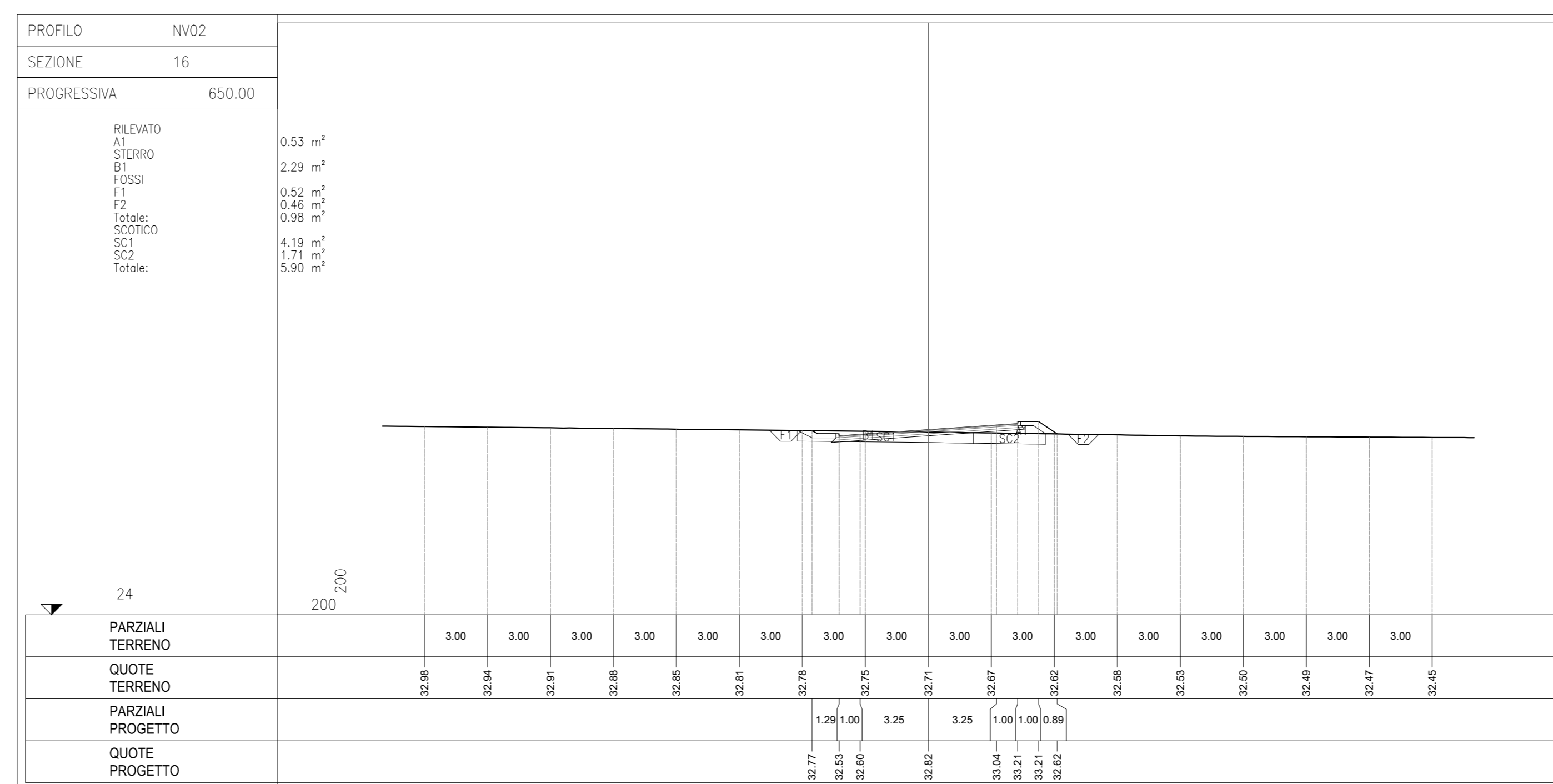
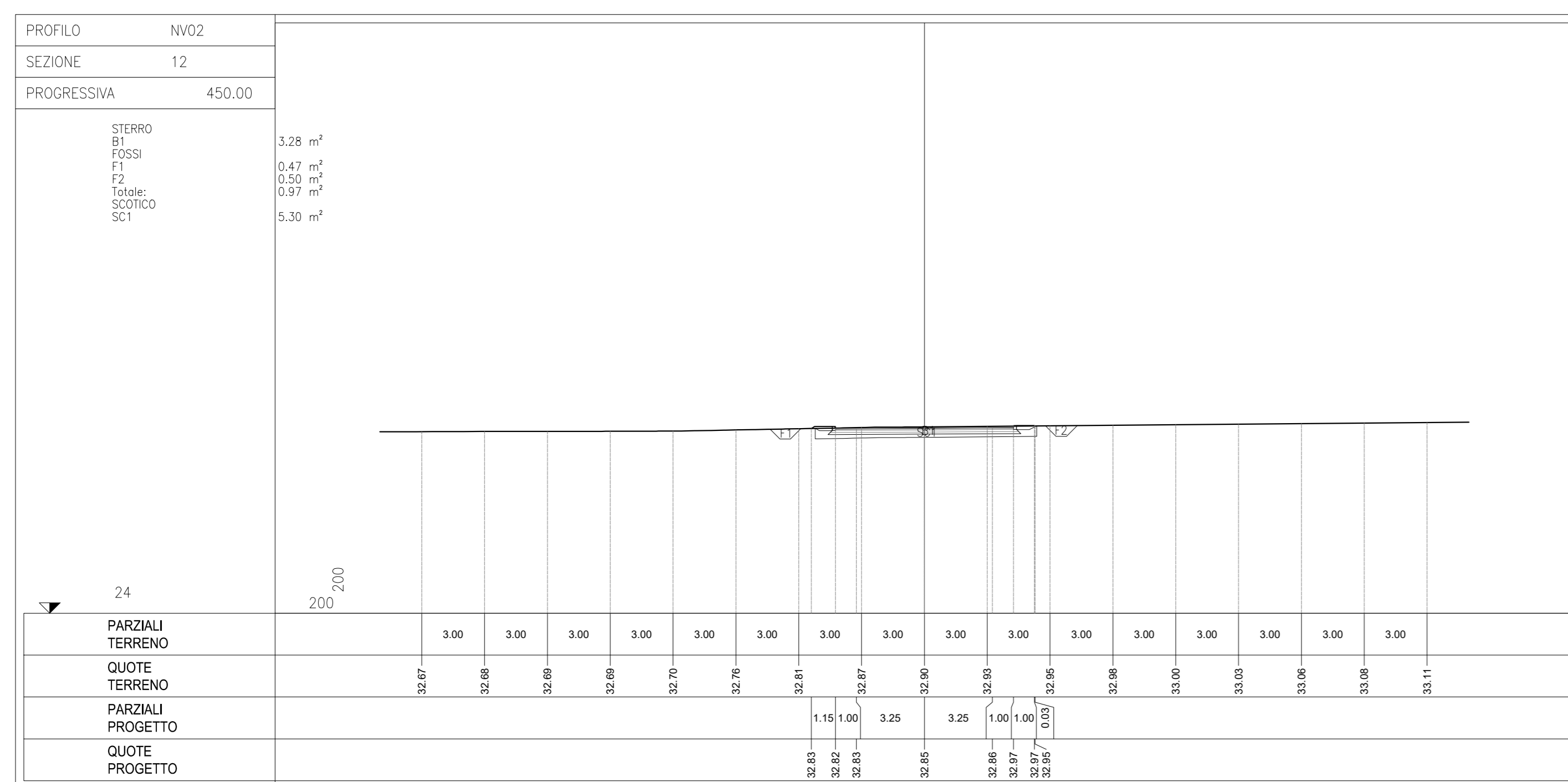
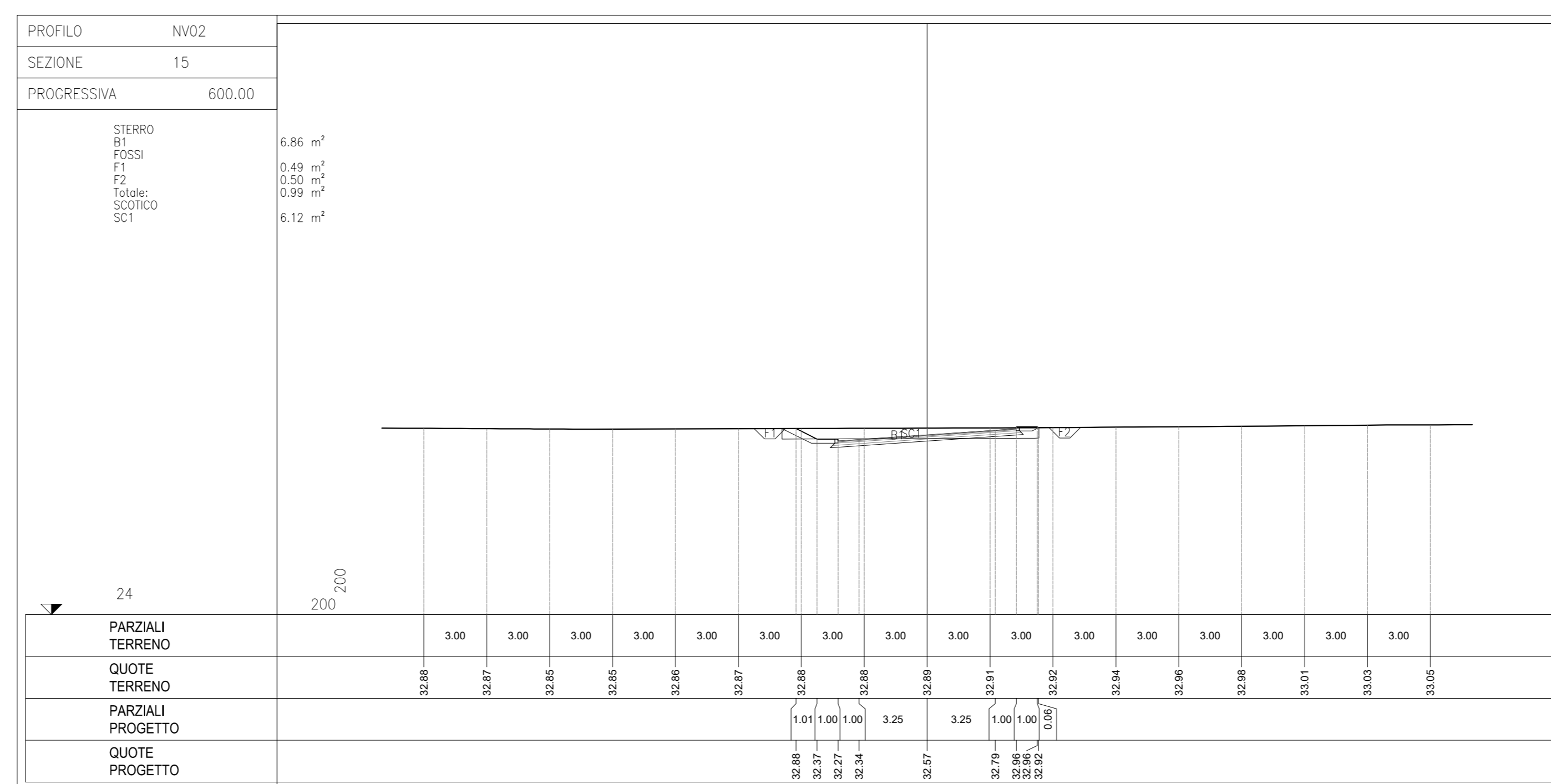
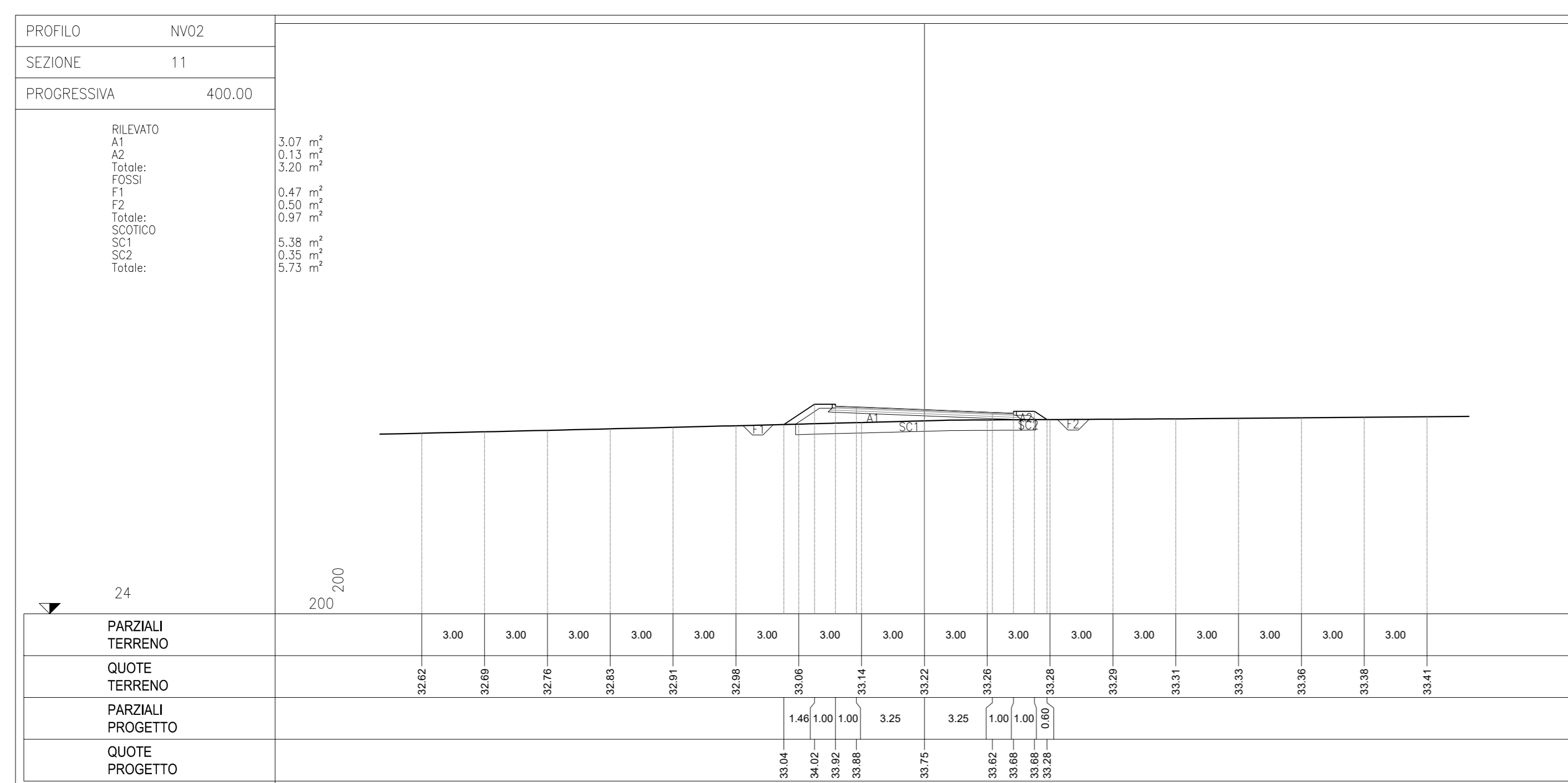
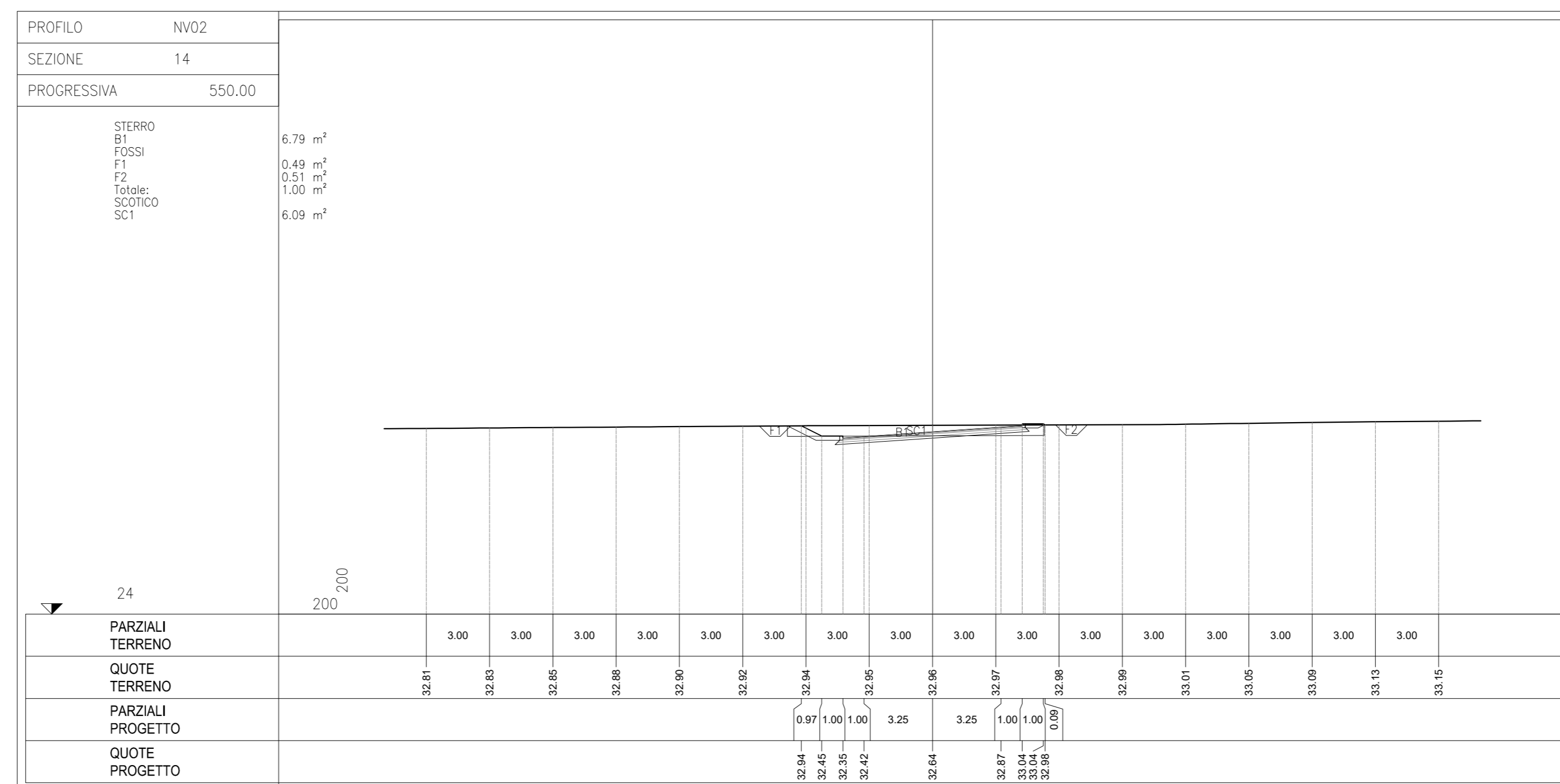
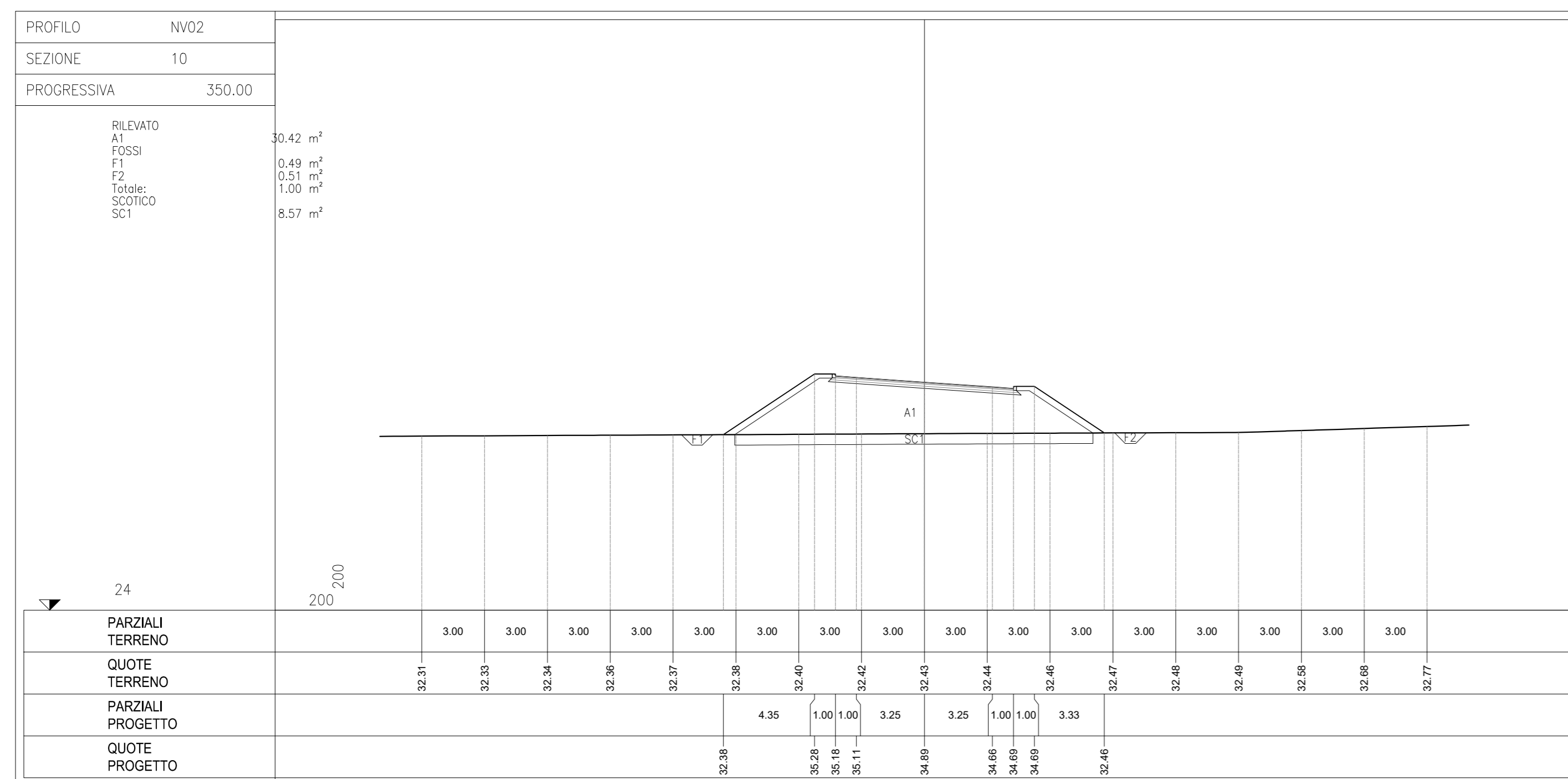
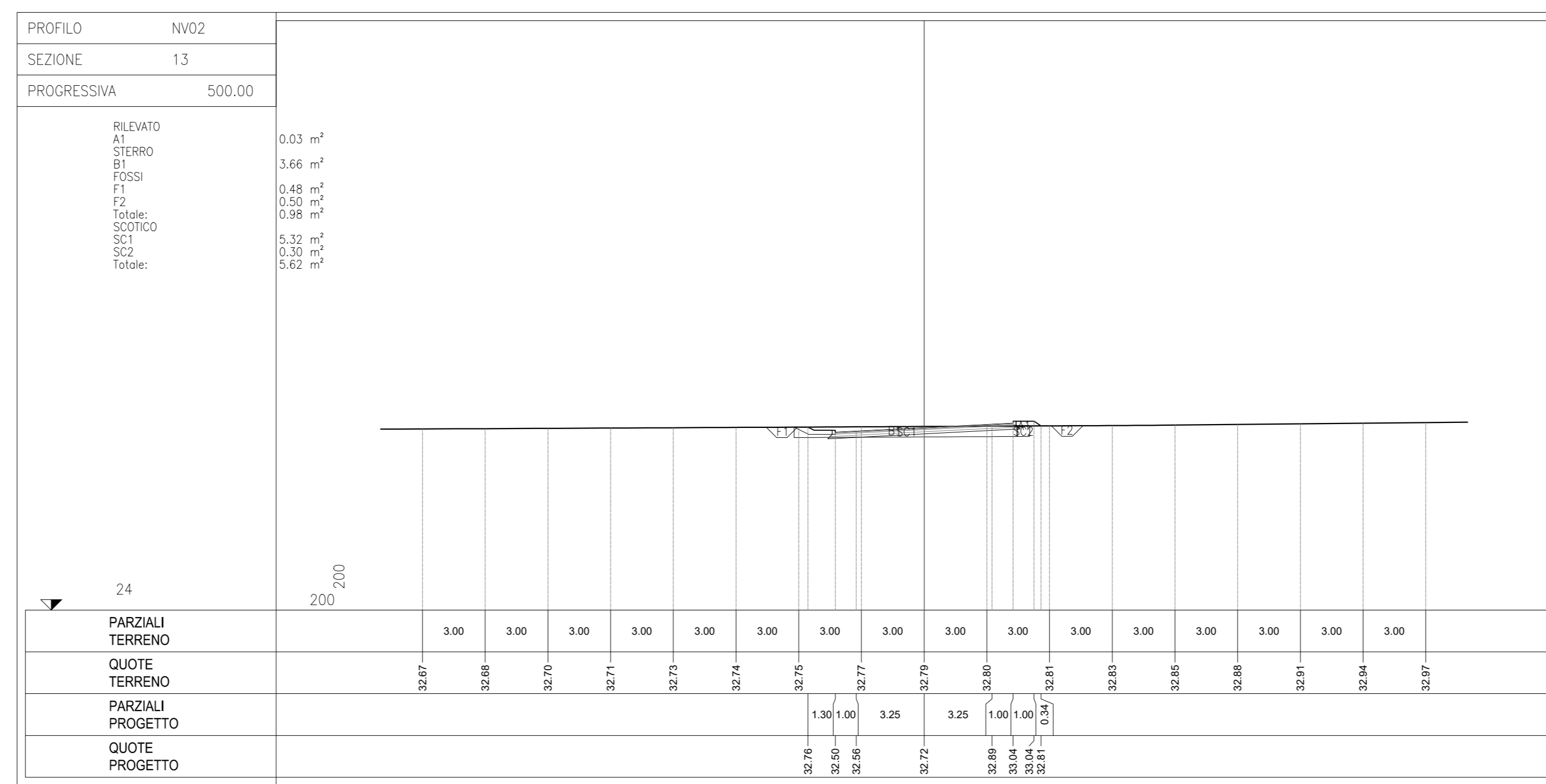
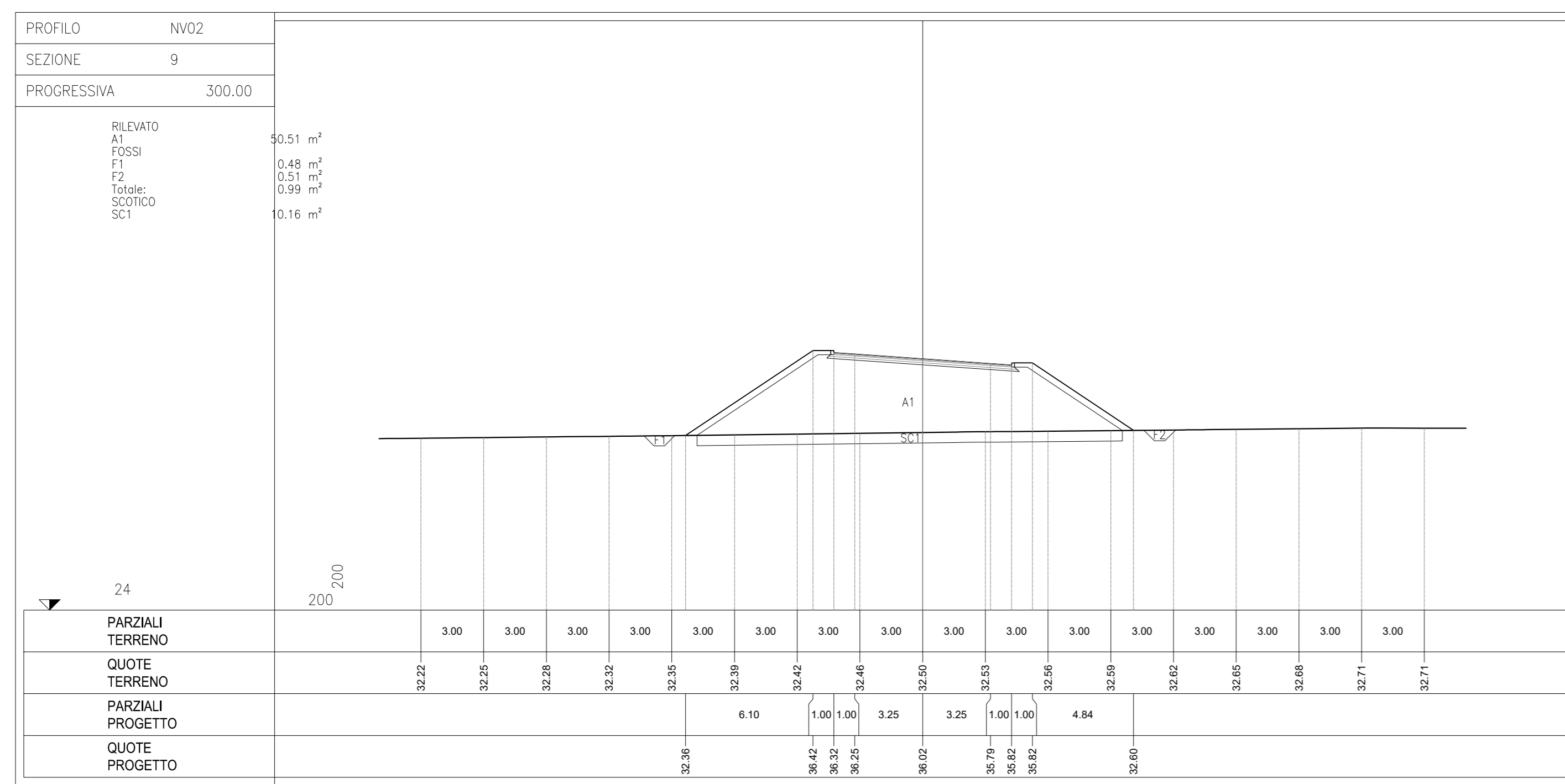


NV02 - SEZIONI TRASVERSALI - TAV. 2 di 3
Scala 1:200



COMMITTENTE:

PROGETTAZIONE:

U.O. COORDINAMENTO NO CAPTIVE E INGEGNERIA DI SISTEMA

PROGETTO DI FATTIBILITÀ TECNICO ECONOMICA

POTENZIAMENTO ED ELETTRIFICAZIONE DELLA LINEA BARLETTA-CANOSA DI PUGLIA

VIABILITA'

NV02
Nuovo CVF Km 9+042.432 - Sezioni trasversali Tav. 2 di 3

SCALA: 1:200

COMMESSA LOTTO FASE ENTE TIPO DOC. OPERA/DISCIPLINA Progr. REV.

I	A	6	C	0	0	F	1	0	W	9	I	F	0	0	0	0	0	0	5	A
---	---	---	---	---	---	---	---	---	---	---	---	---	---	---	---	---	---	---	---	---

Rev.	Descrizione	Redatto	Data	Verificato	Data	Approvato	Data	Autorizzato	Data
A	EMISSIONE		Maggio 2009		Maggio 2009		Maggio 2009		Maggio 2009

File: as00010a9\0009004-5.dwg