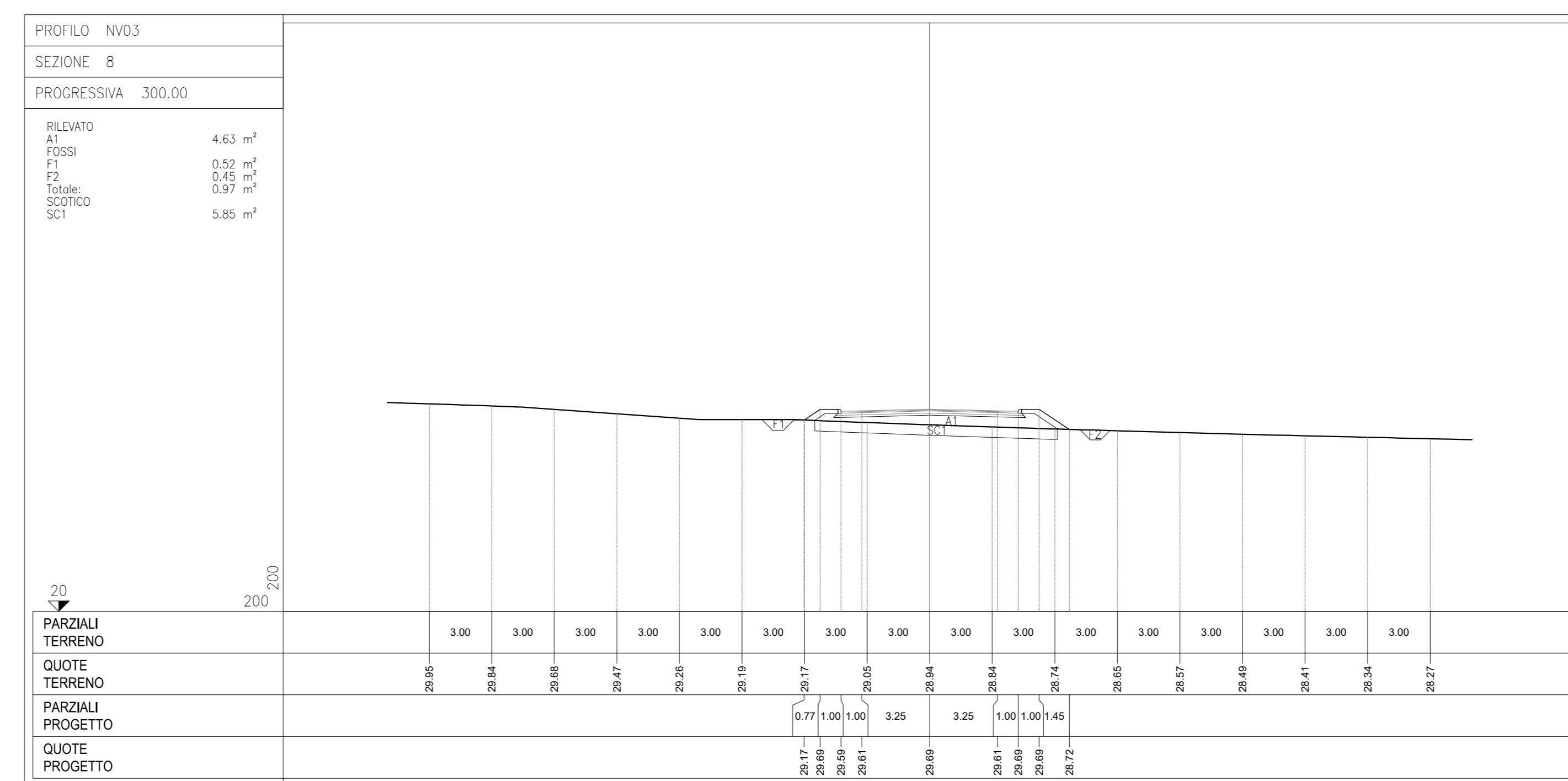
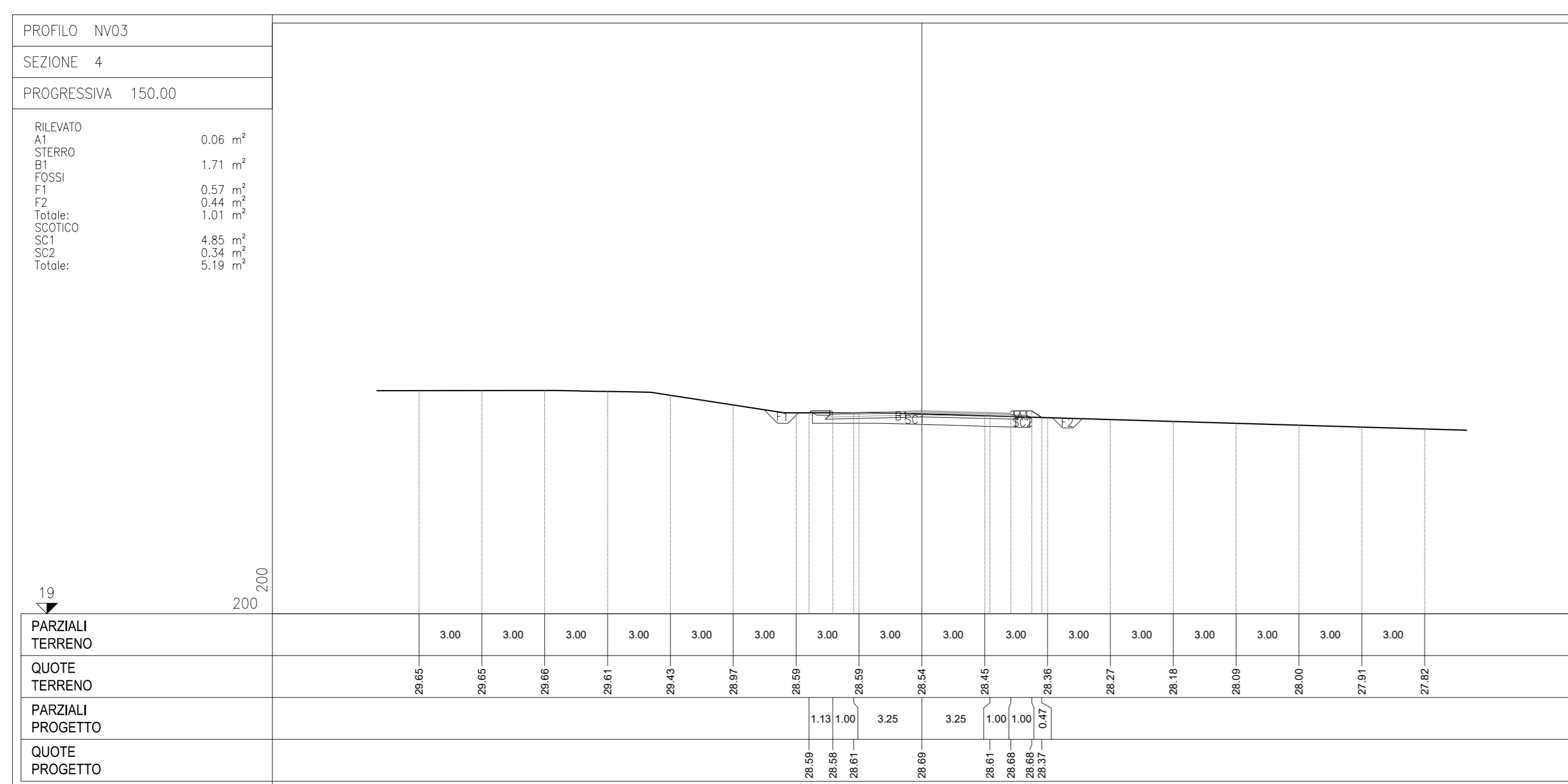
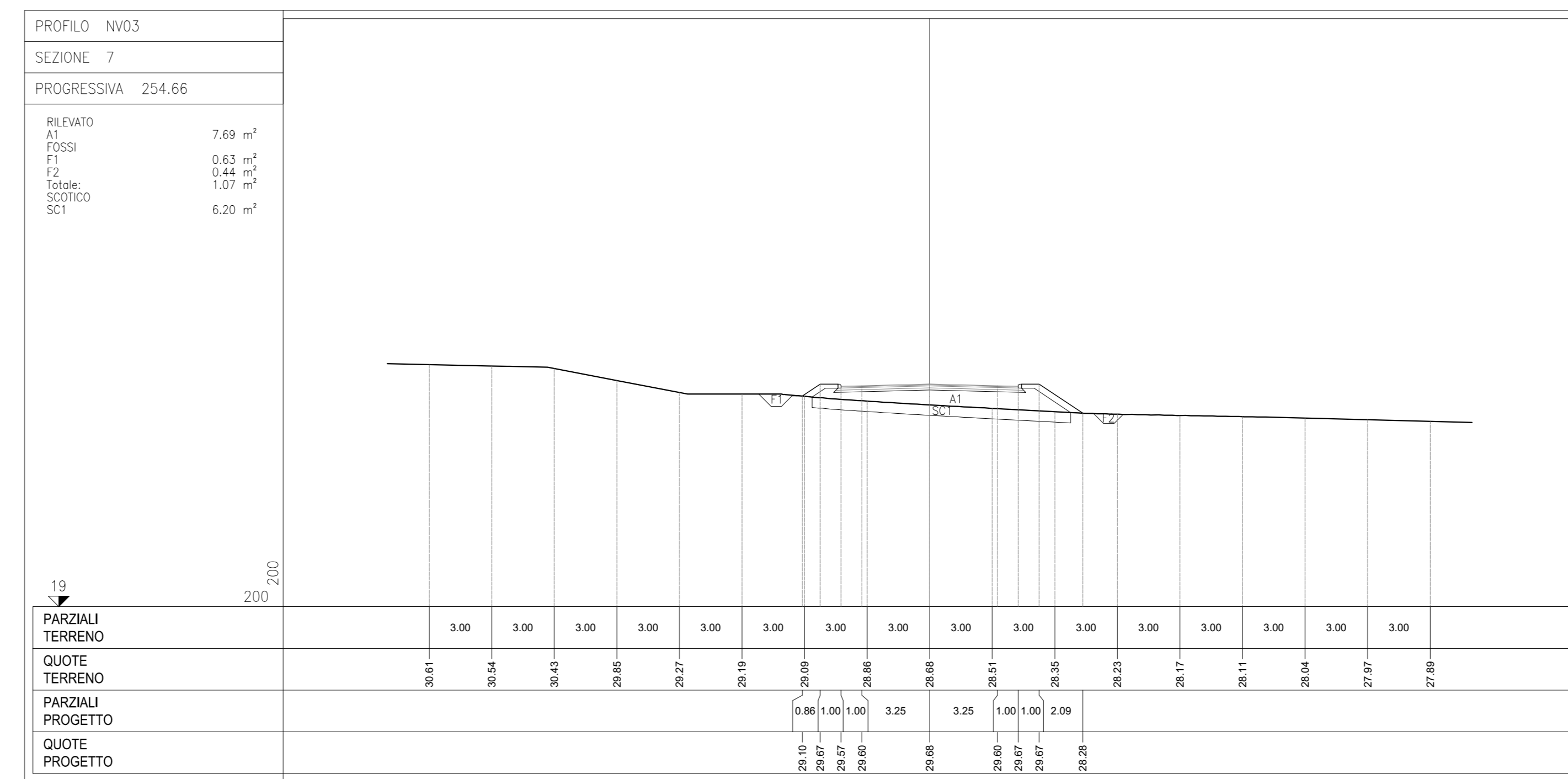
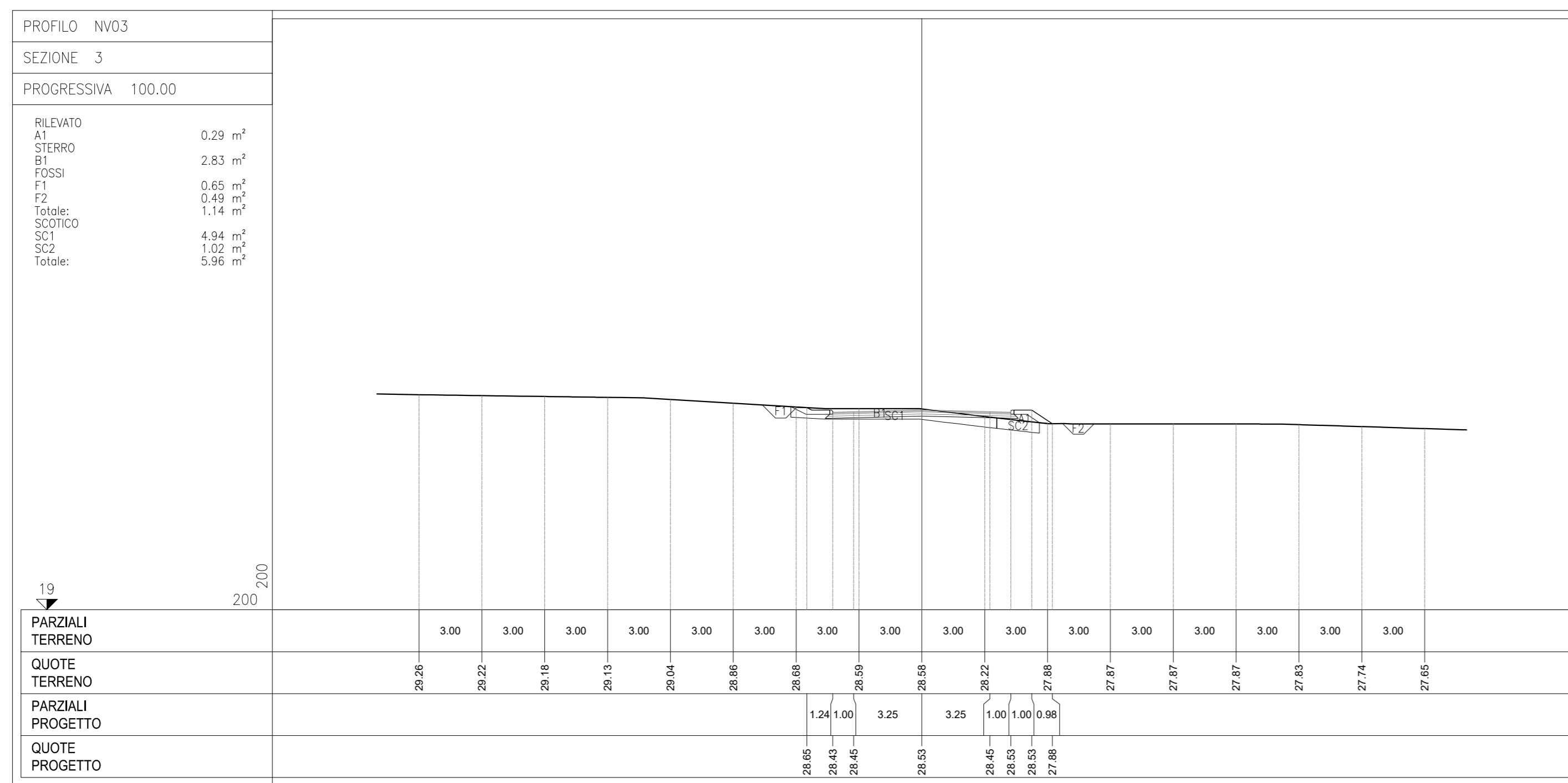
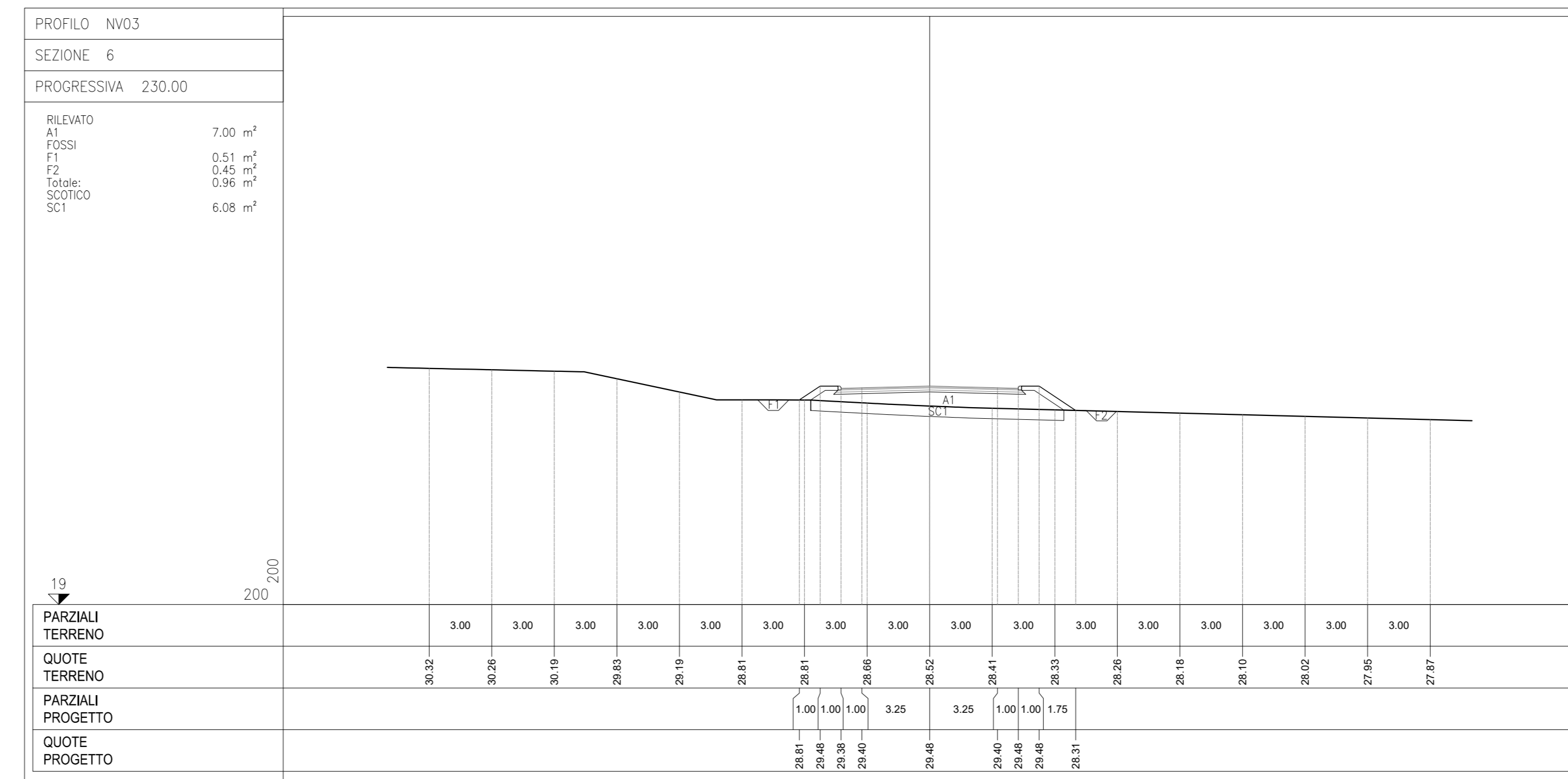
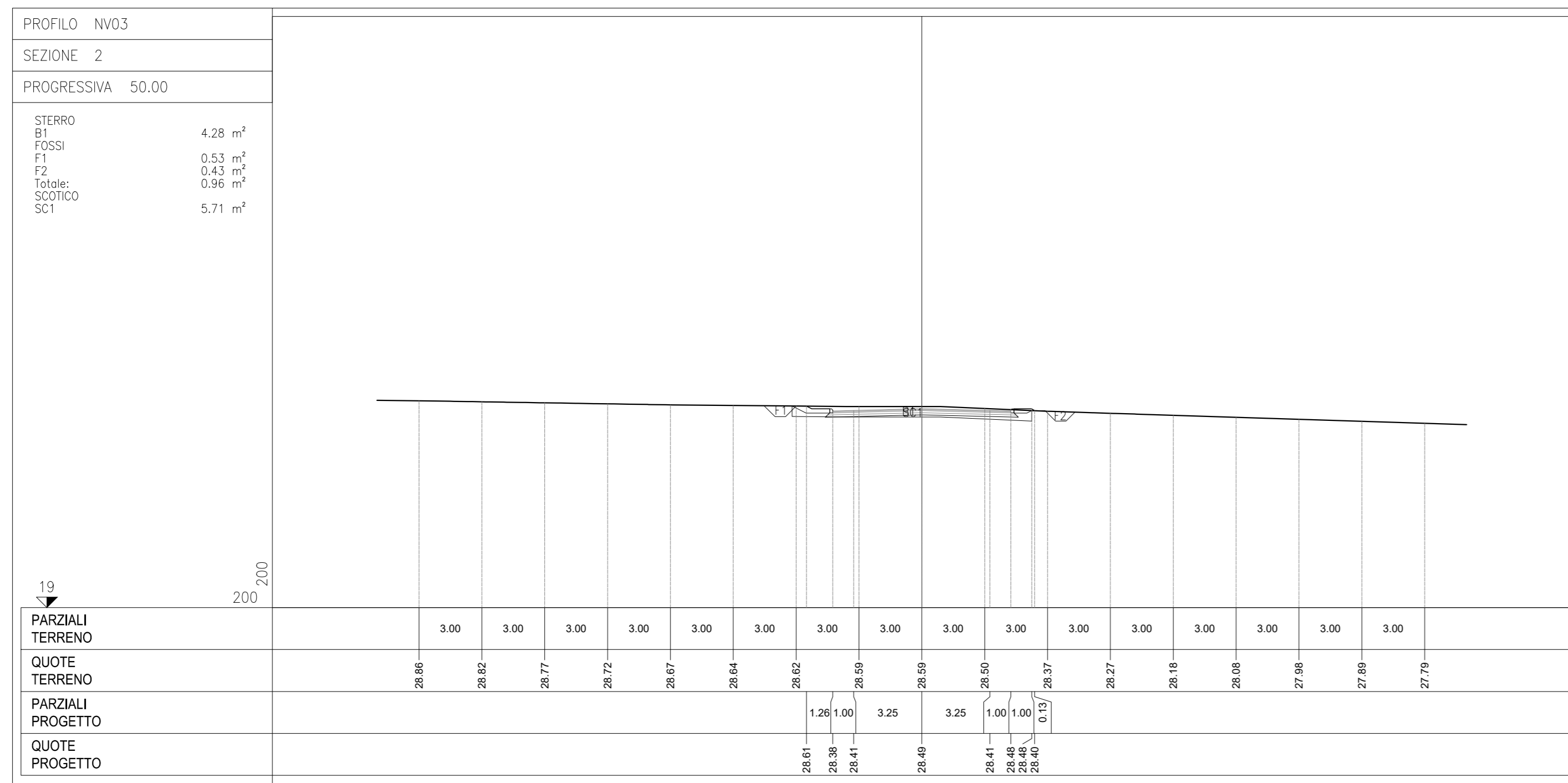
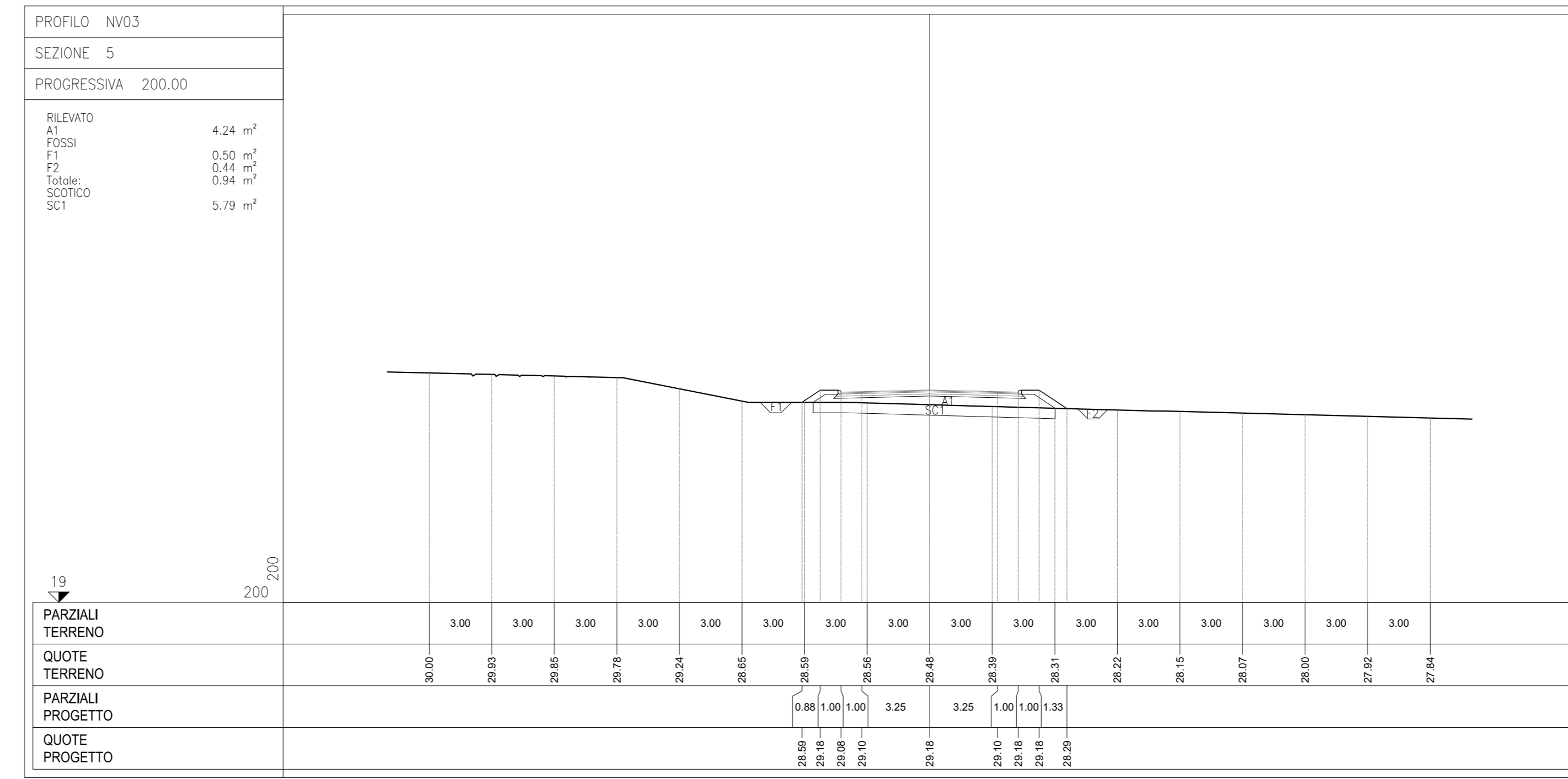
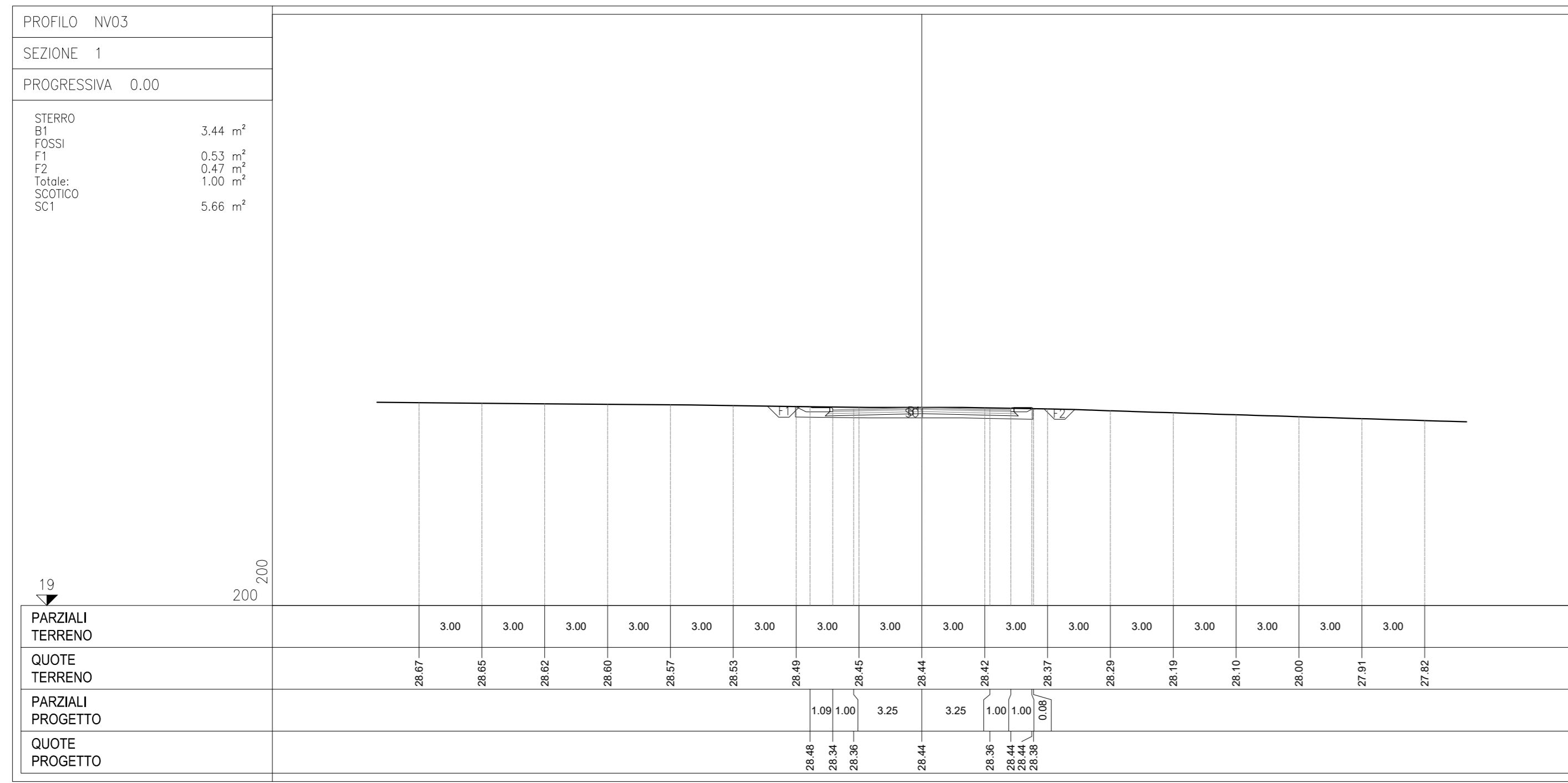


NV03 - SEZIONI TRASVERSALI - TAV. 1 di 5
Scala 1:200



COMMITTENTE:

PROGETTAZIONE:

U.O. COORDINAMENTO NO CAPTIVE E INGEGNERIA DI SISTEMA

PROGETTO DI FATTIBILITÀ TECNICO ECONOMICA

POTENZIAMENTO ED ELETRIFICAZIONE DELLA LINEA BARLETTA-CANOSA DI PUGLIA

VIAIBILITÀ

NV03
Nuovo CVF Km 14+680.374 - Sezioni trasversali Tav. 1 di 5

SCALA: 1:200

COMMESSA LOTTO FASE ENTE TIPO DOC. OPERA/DISCIPLINA Progr. REV.

I | A | 6 | C | 0 | 0 | F | 1 | 0 | W | 9 | I | F | 0 | 0 | 0 | 0 | 0 | 7 | A

Rev.	Descrizione	Redatto	Data	Verificato	Data	Approvato	Data	Autorizzato Data
A	EMISSIONE		Maggio 2020		Maggio 2020		Maggio 2020	Maggio 2020 G. ARAGROSCIO

File: aso0010a9\0006907.8-0-10-11a.dwg n. Etab.: