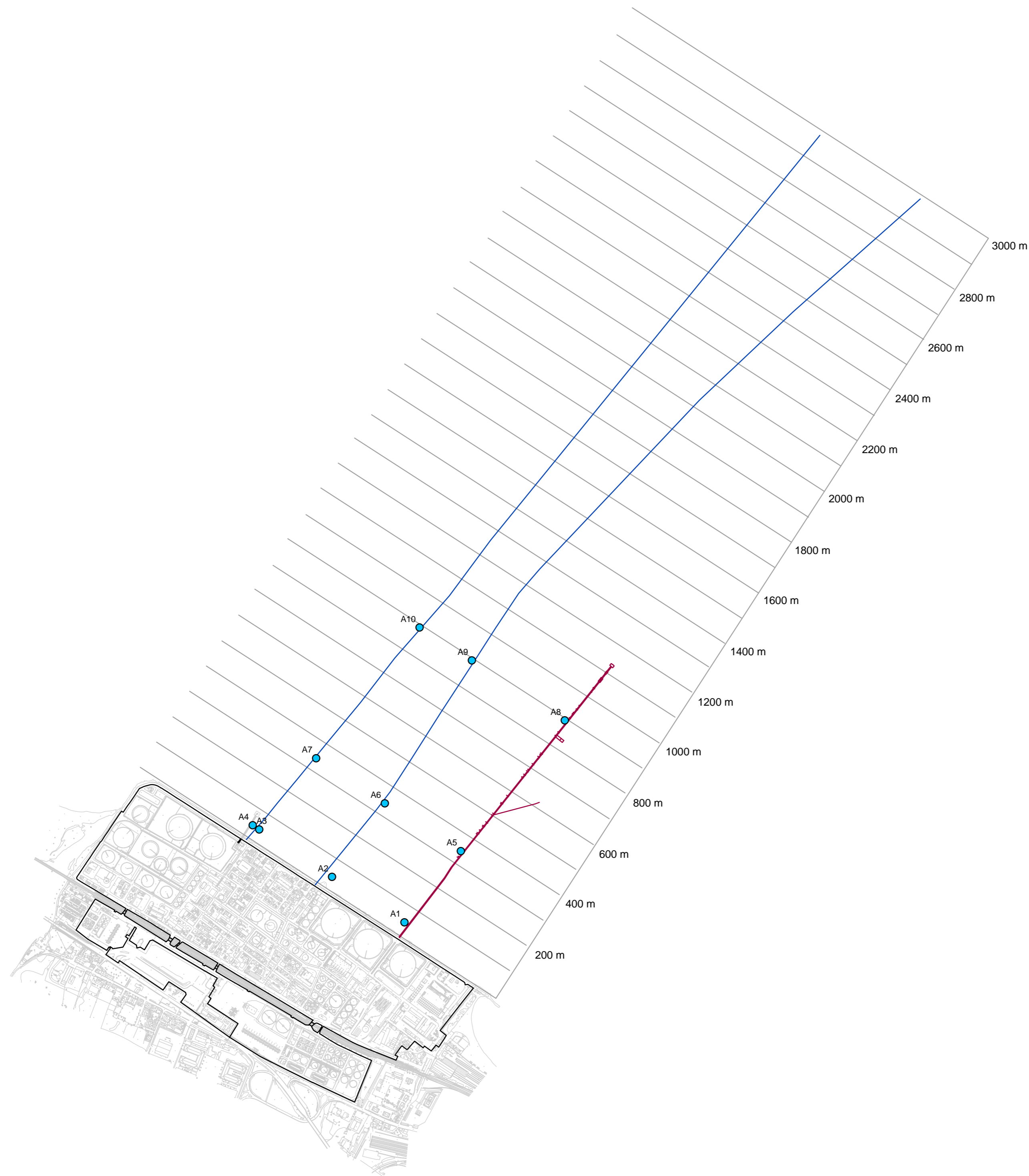


0 250 500
Meters



Legenda

- Confine di raffineria
- 100 m — Isodistanza dalla linea di costa
- Pontile
- Condotta sottomarina

● Stazione di campionamento acqua
"Revisione del Piano di Caratterizzazione delle aree in concessione demaniale antistanti la raffineria e contermini ai pontili e lungo le condotte sottomarine" (FWIENV, giugno 2008)

LETTER	DATE	DESCRIPTION	BY	CHD	APP.
	11/12/2008	Prima emissione			
REVISIONS					
			APPROVED FOR CONSTRUCTION		
			DWG. REV.	DATE	SIGNATURE
Figura 1.2: Ubicazione stazioni di campionamento acqua			ORDER N°		
			SUPPLIER		
			CONTRACT N°	1-BH-0314D	
FOSTER WHEELER S.p.a. Environmental Division <small>THIS DRAWING IS THE PROPERTY OF FOSTER WHEELER ITALIANA AND IS LENT WITHOUT CONSIDERATION OTHER THAN THE BORROWER'S AGREEMENT THAT IT SHALL NOT BE REPRODUCED, COPIED, LENT OR EXPOSED OR DIRECTLY OR INDIRECTLY NOR USED FOR ANY PURPOSE OTHER THAN THAT FOR WHICH IT IS SPECIFICALLY FURNISHED. THE APPARATUS SHOWN IN THE DRAWING IS COVERED BY PATENTS.</small>			THIS DWG. SUPERSEDED BY	SCALE	
			THIS DWG. SUPERSEDES	1:10000	
			DWG. N°	REV.	
			BH0314D-01-287-A2	0	