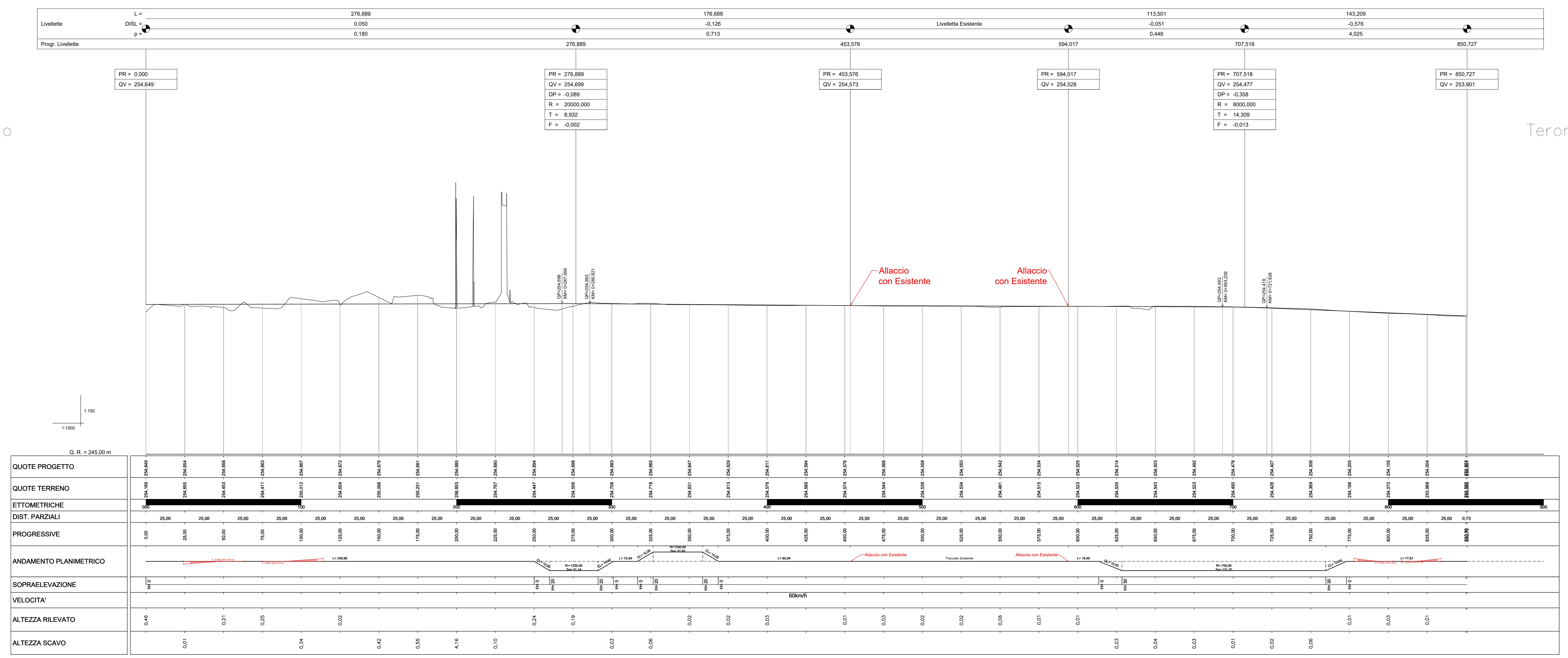


Foligno ←

Terontola →



QUOTE PROGETTO	QUOTE TERRENO	ETTOMETRICHE	DIST. PARZIALI	PROGRESSIVE	ANDAMENTO PLANIMETRICO	SOPRAELEVAZIONE	VELOCITA'	ALTEZZA RILEVATO	ALTEZZA SCAVO
251.886 - 254.649	251.886 - 254.649	0.00	25.00	0.00		HH	60km/h	0.46	
254.650 - 254.654	254.650 - 254.654	25.00	25.00	25.00		HH	60km/h	0.01	0.01
254.655 - 254.699	254.655 - 254.699	50.00	25.00	50.00		HH	60km/h	0.21	0.21
254.700 - 254.710	254.700 - 254.710	75.00	25.00	75.00		HH	60km/h	0.25	0.25
254.711 - 254.811	254.711 - 254.811	100.00	25.00	100.00		HH	60km/h	0.02	0.02
254.812 - 254.856	254.812 - 254.856	125.00	25.00	125.00		HH	60km/h	0.42	0.42
254.857 - 254.871	254.857 - 254.871	150.00	25.00	150.00		HH	60km/h	0.25	0.25
254.872 - 254.885	254.872 - 254.885	175.00	25.00	175.00		HH	60km/h	4.16	4.16
254.886 - 254.890	254.886 - 254.890	200.00	25.00	200.00		HH	60km/h	0.10	0.10
254.891 - 254.894	254.891 - 254.894	225.00	25.00	225.00		HH	60km/h	0.24	0.24
254.895 - 254.898	254.895 - 254.898	250.00	25.00	250.00		HH	60km/h	0.19	0.19
254.899 - 254.903	254.899 - 254.903	275.00	25.00	275.00		HH	60km/h	0.02	0.02
254.904 - 254.908	254.904 - 254.908	300.00	25.00	300.00		HH	60km/h	0.02	0.02
254.909 - 254.913	254.909 - 254.913	325.00	25.00	325.00		HH	60km/h	0.05	0.05
254.914 - 254.918	254.914 - 254.918	350.00	25.00	350.00		HH	60km/h	0.02	0.02
254.919 - 254.923	254.919 - 254.923	375.00	25.00	375.00		HH	60km/h	0.02	0.02
254.924 - 254.928	254.924 - 254.928	400.00	25.00	400.00		HH	60km/h	0.03	0.03
254.929 - 254.933	254.929 - 254.933	425.00	25.00	425.00		HH	60km/h	0.01	0.01
254.934 - 254.938	254.934 - 254.938	450.00	25.00	450.00		HH	60km/h	0.02	0.02
254.939 - 254.943	254.939 - 254.943	475.00	25.00	475.00		HH	60km/h	0.02	0.02
254.944 - 254.948	254.944 - 254.948	500.00	25.00	500.00		HH	60km/h	0.06	0.06
254.949 - 254.953	254.949 - 254.953	525.00	25.00	525.00		HH	60km/h	0.02	0.02
254.954 - 254.958	254.954 - 254.958	550.00	25.00	550.00		HH	60km/h	0.01	0.01
254.959 - 254.963	254.959 - 254.963	575.00	25.00	575.00		HH	60km/h	0.01	0.01
254.964 - 254.968	254.964 - 254.968	600.00	25.00	600.00		HH	60km/h	0.04	0.04
254.969 - 254.973	254.969 - 254.973	625.00	25.00	625.00		HH	60km/h	0.03	0.03
254.974 - 254.978	254.974 - 254.978	650.00	25.00	650.00		HH	60km/h	0.01	0.01
254.979 - 254.983	254.979 - 254.983	675.00	25.00	675.00		HH	60km/h	0.02	0.02
254.984 - 254.988	254.984 - 254.988	700.00	25.00	700.00		HH	60km/h	0.06	0.06
254.989 - 254.993	254.989 - 254.993	725.00	25.00	725.00		HH	60km/h	0.01	0.01
254.994 - 254.998	254.994 - 254.998	750.00	25.00	750.00		HH	60km/h	0.02	0.02
254.999 - 255.003	254.999 - 255.003	775.00	25.00	775.00		HH	60km/h	0.06	0.06
255.004 - 255.008	255.004 - 255.008	800.00	25.00	800.00		HH	60km/h	0.01	0.01
255.009 - 255.013	255.009 - 255.013	825.00	25.00	825.00		HH	60km/h	0.03	0.03
255.014 - 255.018	255.014 - 255.018	850.00	25.00	850.00		HH	60km/h	0.01	0.01
255.019 - 255.023	255.019 - 255.023	875.00	25.00	875.00		HH	60km/h	0.02	0.02
255.024 - 255.028	255.024 - 255.028	900.00	25.00	900.00		HH	60km/h	0.06	0.06

Binario 2 V PLAN Bin2.1		Binario 2 V PLAN Bin2.2		Binario 2 V PLAN Bin2.3		Binario 2 V PLAN Bin2.4	
X	1203227,032	2301947,762	4774653,802	344,018291	2301947,762	4774653,802	344,018291
Y	4774478,094	1250,000	31,144	1250,000	4774653,802	1250,000	31,144
Azin	344,018291	V(km/h)	60	60	V(km/h)	60	60
		Lr(m)	10,000	10,000	Lr(m)	10,000	10,000
		Afa tot	0,003	0,003	Afa tot	0,003	0,003
		Tarco	20,0	20,0	Tarco	20,0	20,0

DATI DEVIATOI

N Dev	Tipologia Deviatore	Coordinate C.G.	Coordinate G.E.	Coordinate G.U.1	Coordinate G.U.2
1	1 - S60-LN4-000,074 sx	2302214,0884	4774477,4458	2302225,6293	4774492,8133
2	2 - S60-LN4-000,074 dx	2302169,8720	4774508,8533	2302158,3310	4774518,4094
3	3 - S60-LN4-000,074 sx	2302137,5481	4774535,6113	2302149,0811	4774526,0962
4	4 - S60-LN4-000,074 dx	2302098,2493	4774563,3245	2302168,1849	4774548,1568
5	5 - S60-LN4-170,012 dx	2301981,4662	4774731,7572	2301973,9428	4774738,2440
6	6 - S60-LN4-170,012 dx	2301957,5099	4774769,1852	2301956,4104	4774772,2241
7	7 - S60-LN4-170,012 dx	2301933,5569	4774801,2842	2301932,2474	4774807,1395
8	8 - S60-LN4-170,012 dx	2301911,6324	4774837,3652	2301910,5419	4774840,5914
9	9 - S60-LN4-170,012 dx	2301889,5941	4774875,7751	2301888,8351	4774885,0340
10	10 - S60-LN4-170,012 dx	2301868,4068	4774919,2619	2301868,3544	4774931,4414

V ALT Bin 2.1		V ALT Bin 2.2		V ALT Bin 2.3	
PR	0,000	PR	276,889	PR	594,017
QV	254,649	QV	254,699	QV	254,528
		DP	-0,089		
		R	20000,000		
		T	8,932		
		F	-0,002		

COMMITENTE: **RFI RETE FERROVIARIA ITALIANA** GRUPPO FERROVIE DELLO STATO ITALIANE

PROGETTAZIONE: **ITALFERR** GRUPPO FERROVIE DELLO STATO ITALIANE

DIREZIONE TECNICA
U.O. PROGETTAZIONE LINEE NODI E ARMAMENTO

PROGETTO DEFINITIVO

POTENZIAMENTO DELLA LINEA FOLIGNO-TERONTOLA

INTERVENTI DI SEMPLIFICAZIONE E VELOCIZZAZIONE PRG DELLA STAZIONE DI ELLERA

Bin.II - Planimetria e profilo longitudinale di tracciamento

SCALA: 1/1000

COMMESSA LOTTO FASE ENTE TIPO DOC. OPERA/DISCIPLINA PROGR. REV.

IRCE 02 0 13 L7 INF0008 001 A

Revis.	Descrizione	Redatto	Data	Verificato	Data	Approvato	Data	Autorizzato/Date
A	Emissione definitiva	[Firma]	Luglio 2020	[Firma]	Luglio 2020	[Firma]	Luglio 2020	V. Conforti Luglio 2020

File: #10R02013_71000R001A.dwg n. Elab.: 6_12