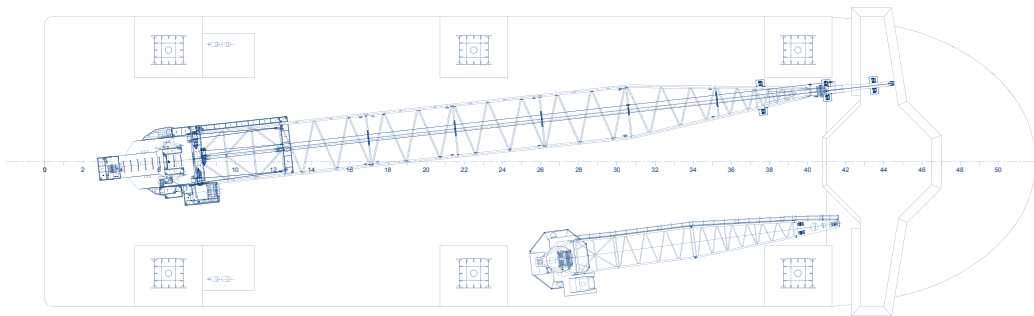
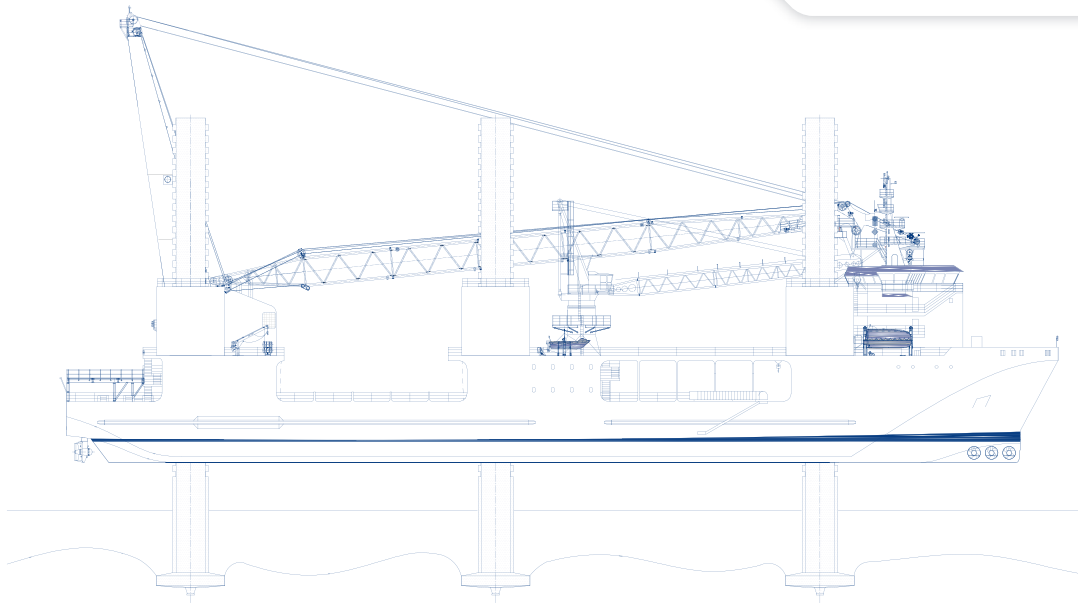




Equipment

Offshore installation and maintenance vessel MPI Resolution



MPI Resolution

Name	MPI Resolution	Main engines	4 X Mitsubishi S16R-MPTK-2 (each 1820 kW @ 1800 rpm) 2 x Wärtsilä 6L20 (each 1110 kW @ 900 rpm)
Type	Offshore installation and maintenance vessel	Bow thrusters	3 Kamewa TT1650CP 102kN per unit
Classification	Det Norske Veritas: 1A1 Self-elevating offshore support unit, wind turbine installation vessel CRANE EO DYNPOS-AUTR	Stern thrusters	4 Aquamaster Rolls Royce US 205/3850 Azimuth Thrusters, 175 kN per unit
Trading area	Worldwide	Total power installed	9.5 MW
Year of construction	2003	Accommodation	70 persons
Dimensions	Length overall 130.00 m Breadth overall 38.00 m Depth 8.00 m to main deck Draft 4.30 m (max for scantling)	Jack-up system	6 legs - length 70.492 m - diameter 3.80 m x 3.80 m
Tonnage	14,310 GT	Clear deck area	3,200 m ²
Deadweight	5,000 tons	Dynamic Position system	DP2 Kongsberg K-Pos DP-21
Speed	11.0 knots		
Main crane	Huisman 600 PMT pedestal mounted offshore crane		
Main hoist	600 tons @ 25.00 m radius		
Auxiliary hoist	30 tons @ 92.50 m radius		
Auxiliary crane	Kenz EHC 50/3500 Pedestal Mounted Crane, 50 tons at any radius		

Contact

MPI Offshore
18 Ellerbeck Court
Stokesley Business Park
Stokesley
TS9 5PT
United Kingdom
E info@mpi-offshore.com
I www.mpi-offshore.com