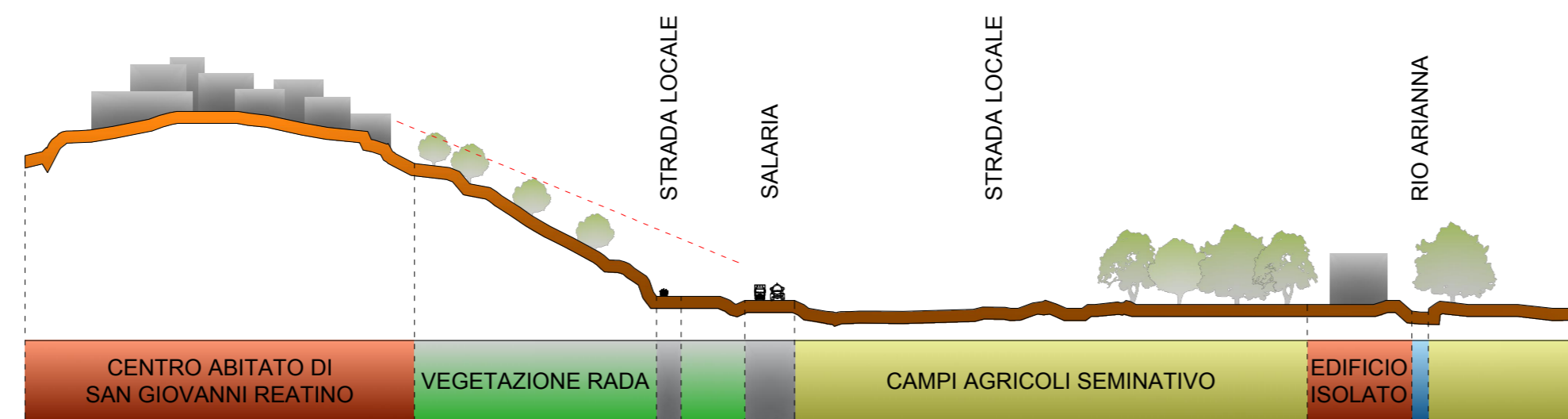
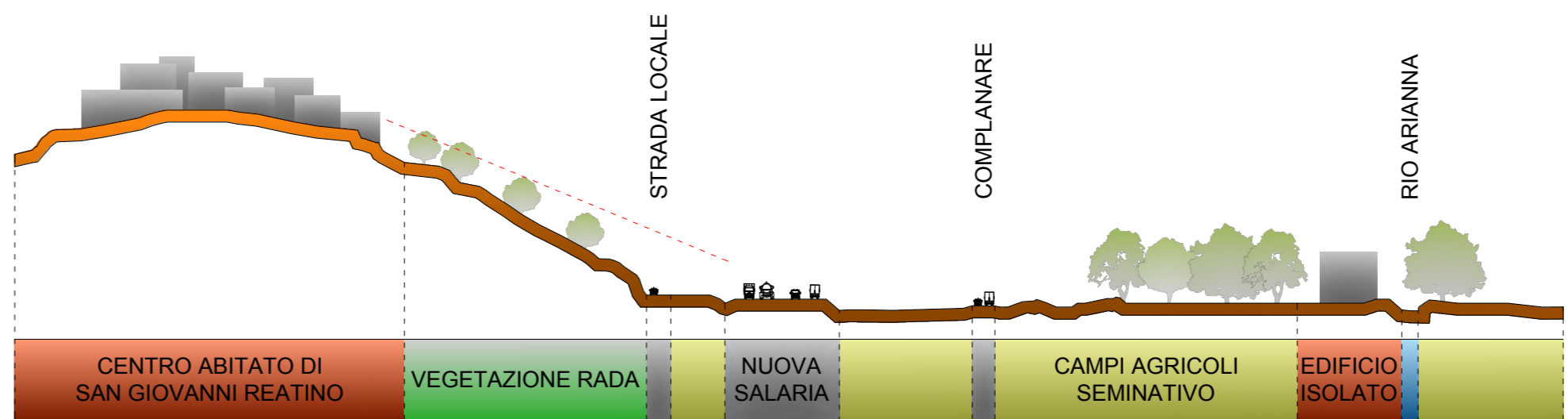




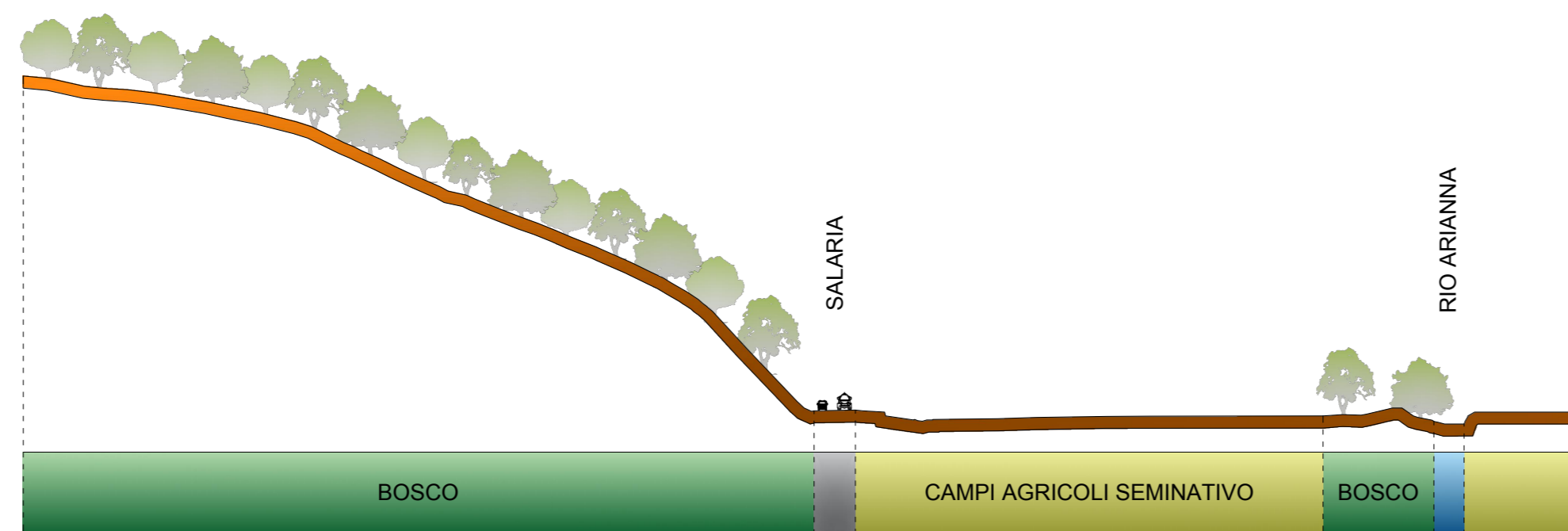
PROFILO 6 - ANTE OPERAM



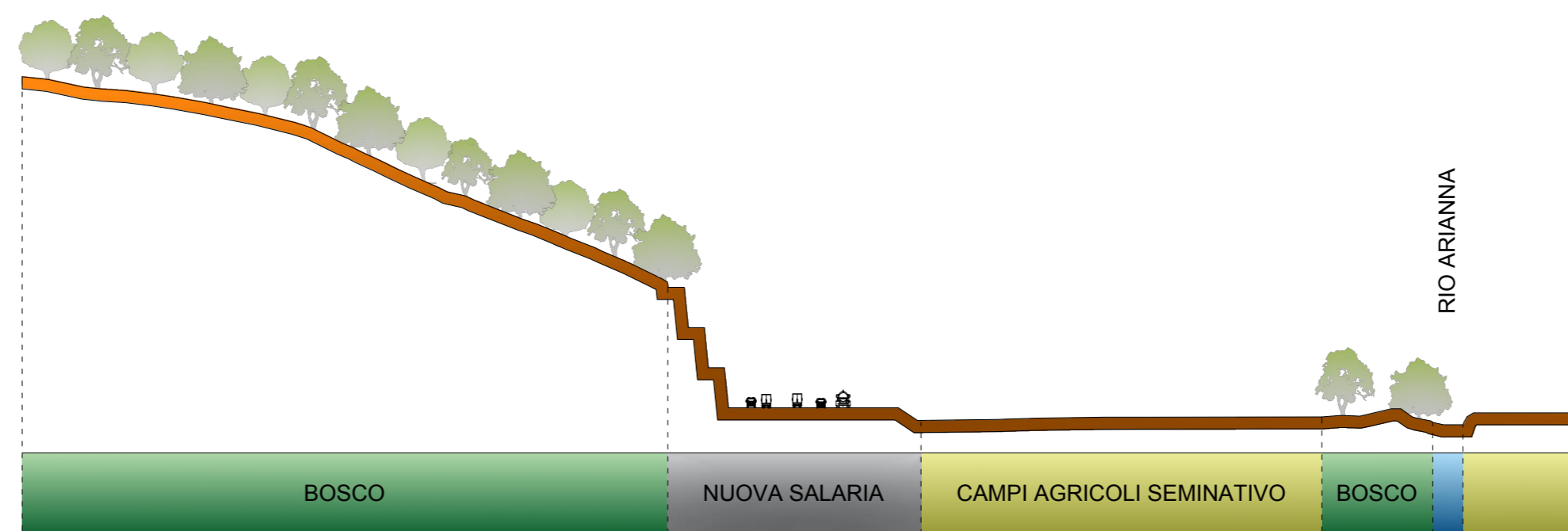
PROFILO 6 - POST OPERAM



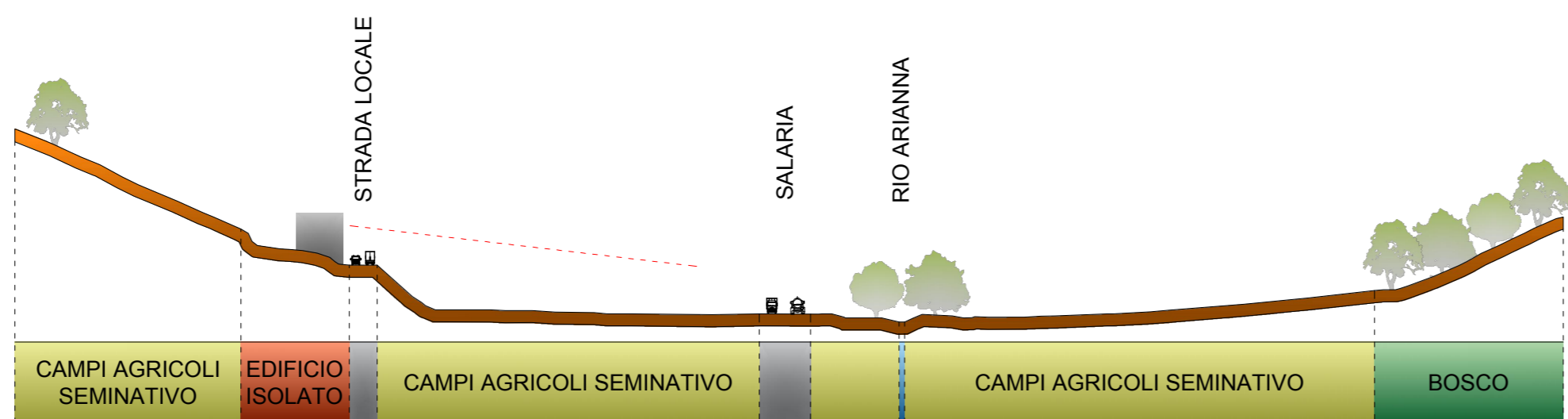
PROFILO 5 - ANTE OPERAM



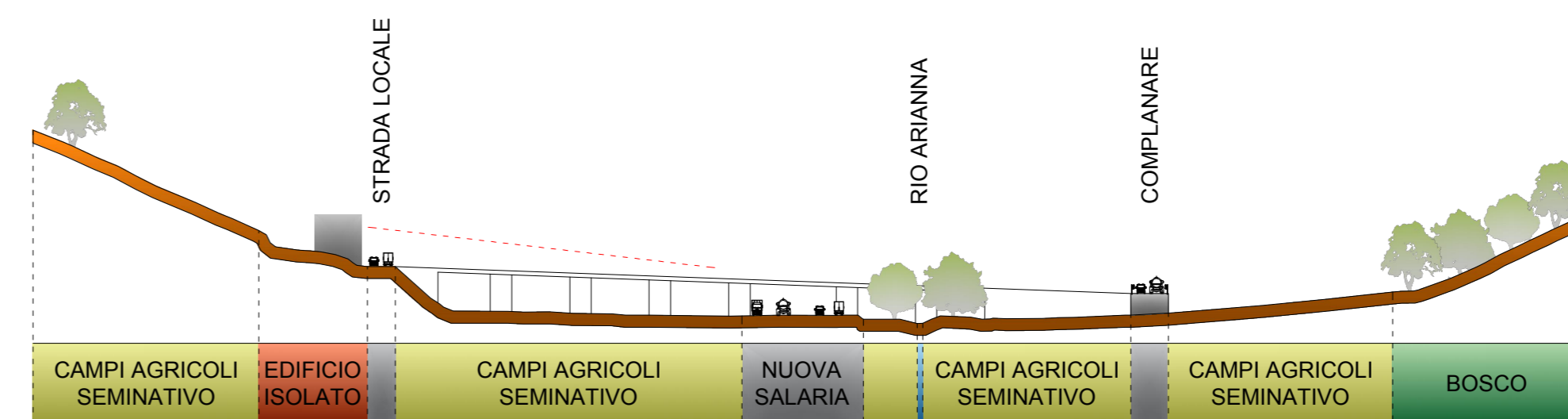
PROFILO 5 - POST OPERAM



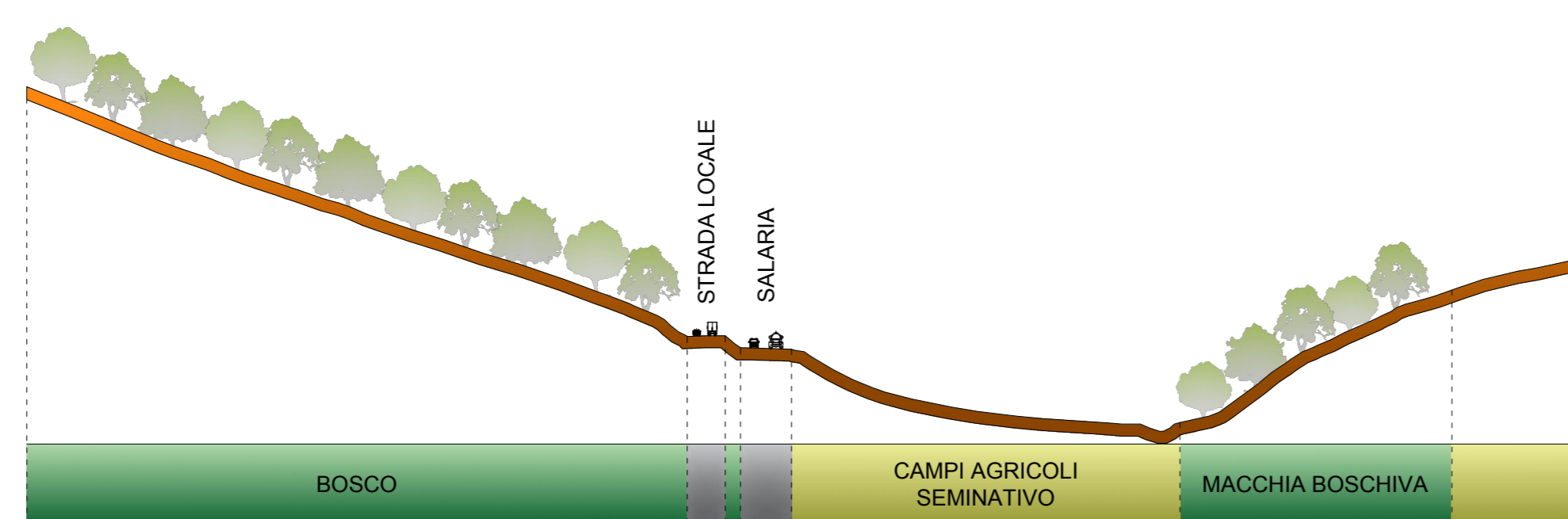
PROFILO 4 - ANTE OPERAM



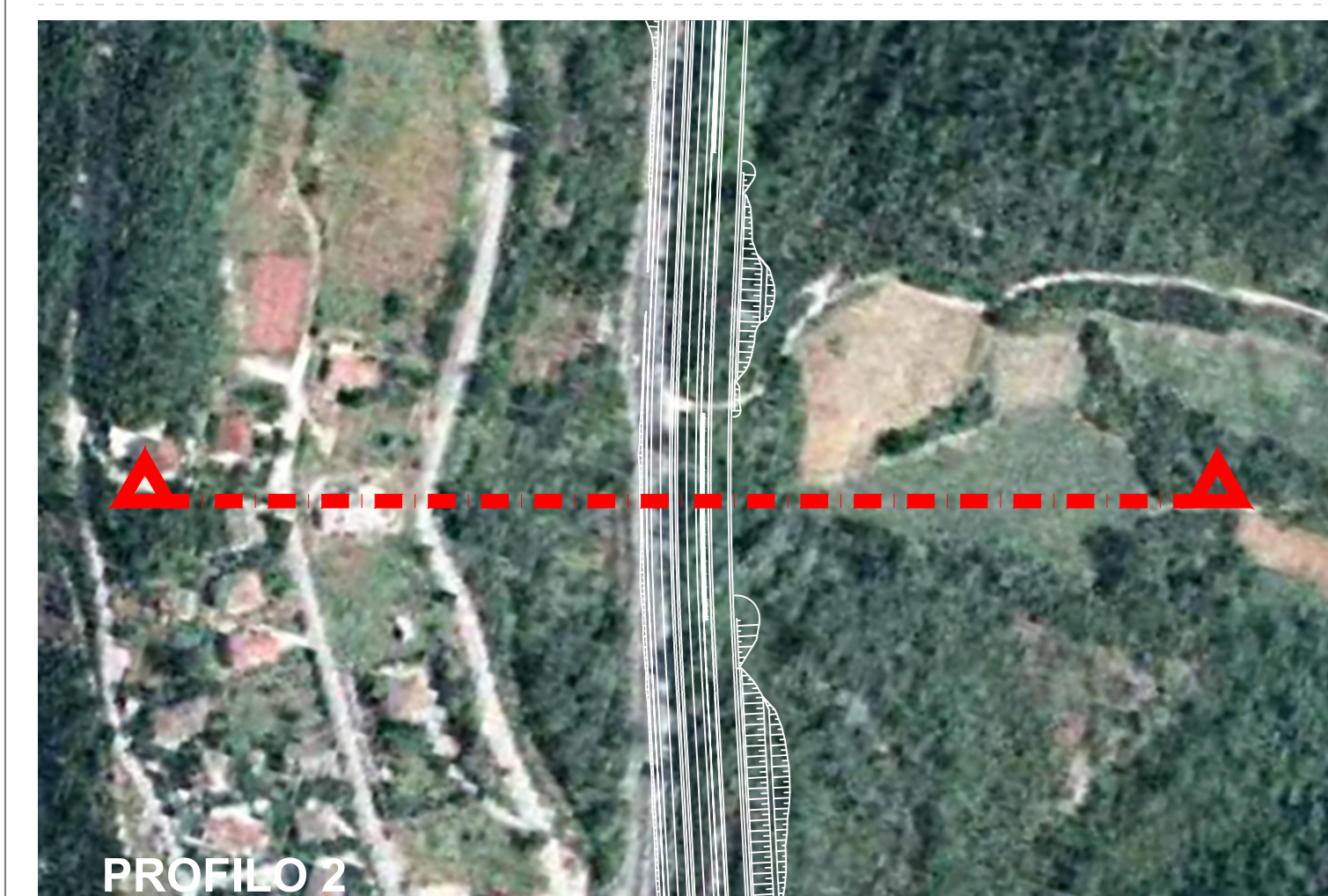
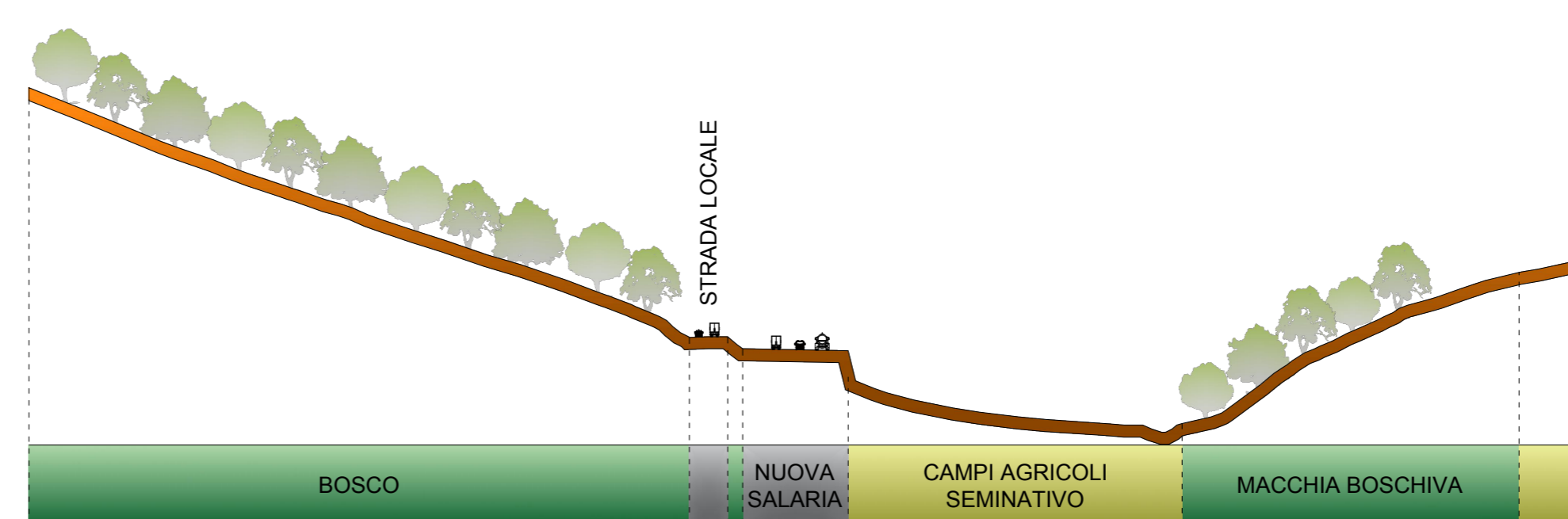
PROFILO 4 - POST OPERAM



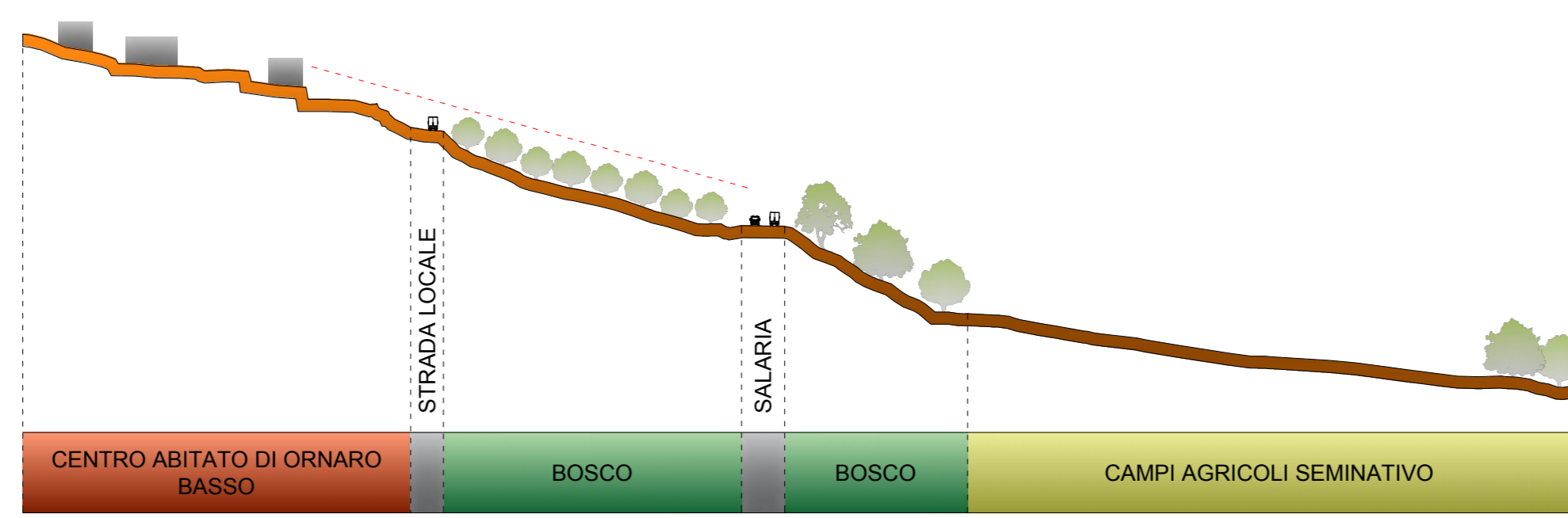
PROFILO 3 - ANTE OPERAM



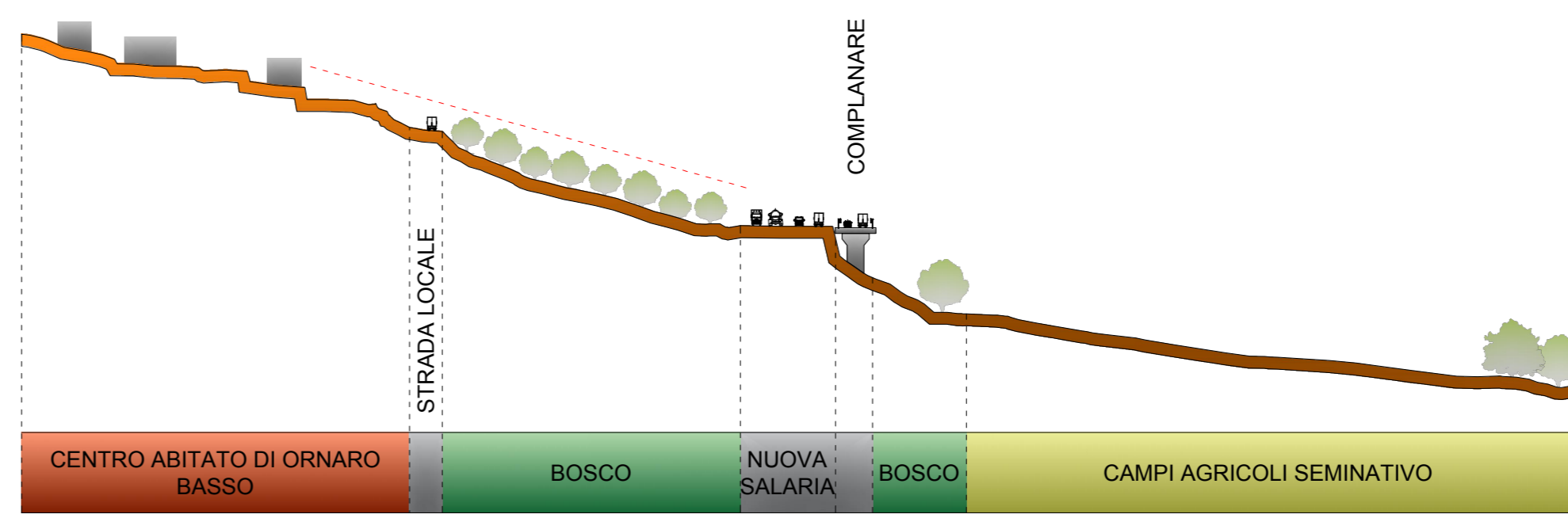
PROFILO 3 - POST OPERAM



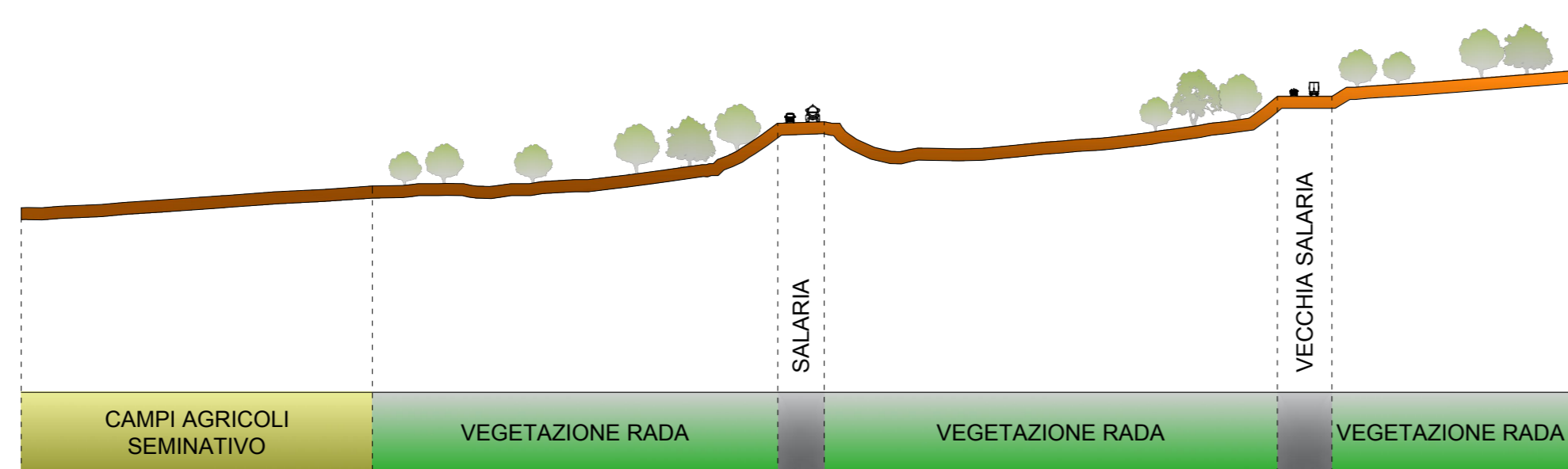
PROFILO 2 - ANTE OPERAM



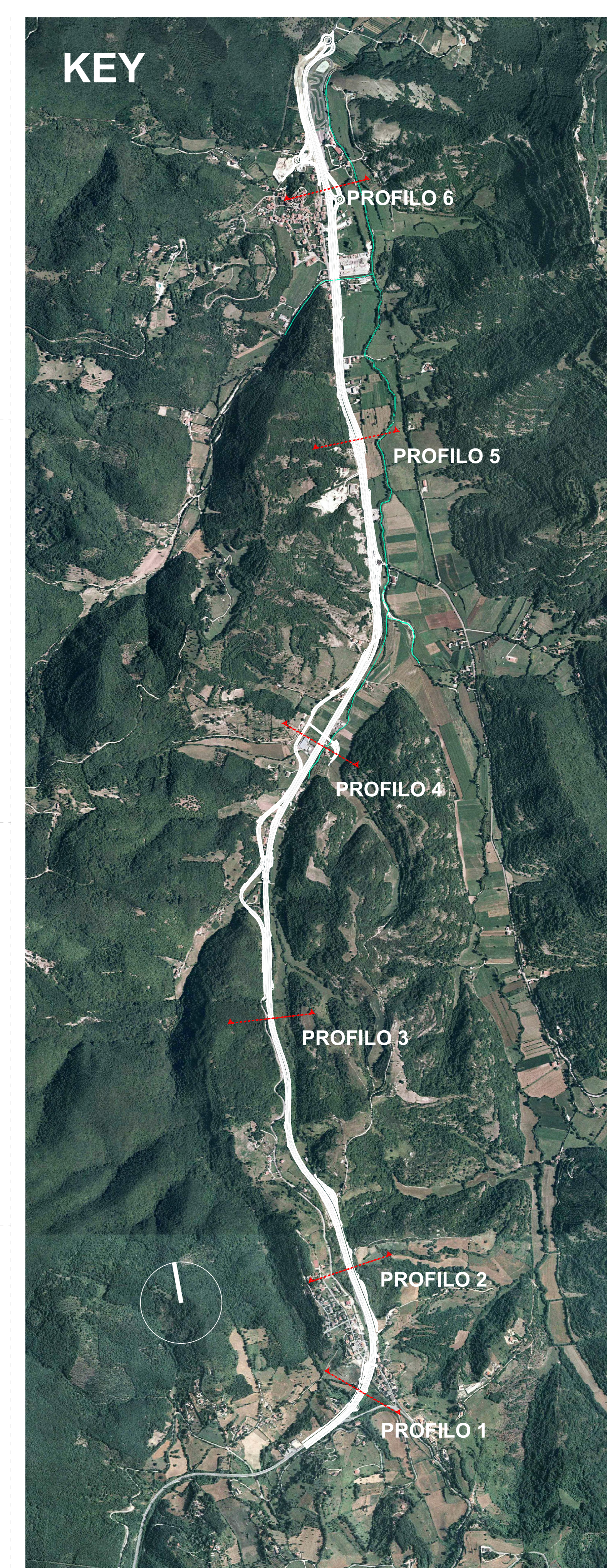
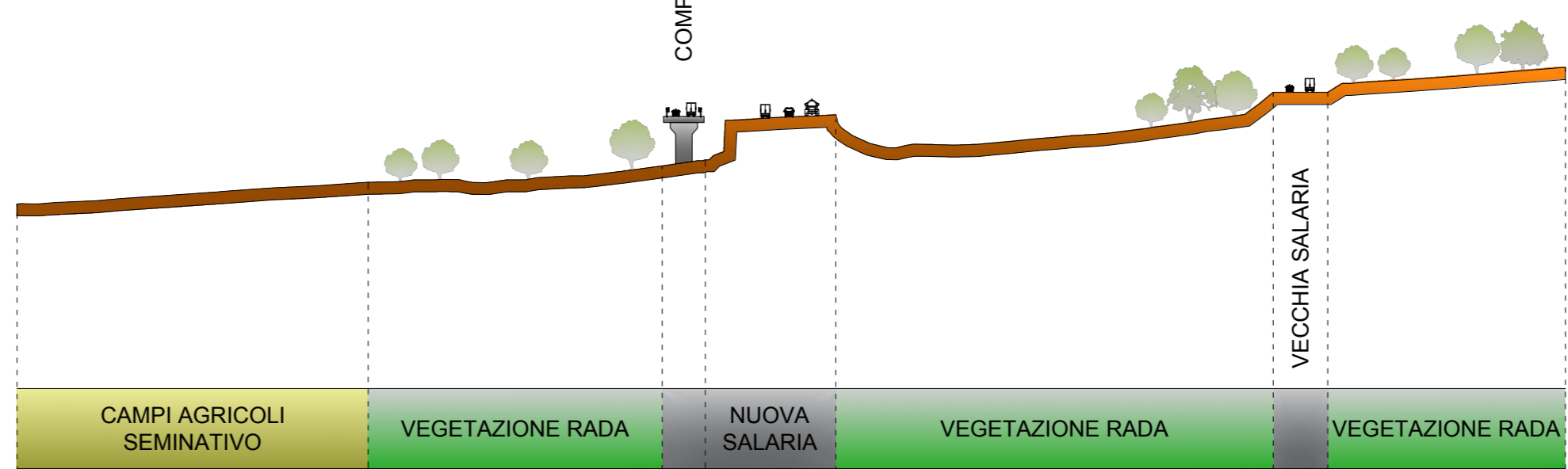
PROFILO 2 - POST OPERAM



PROFILO 1 - ANTE OPERAM



PROFILO 1 - POST OPERAM



anas Direzione Progettazione e Realizzazione Lavori

STRADA STATALE 4 "VIA SALARIA"
Adeguamento della piattaforma stradale e messa in sicurezza dal km 56+000 al km 70+800

PROGETTO DEFINITIVO COD. RM 180/364

PROGETTAZIONE: R.T.I.: PROGIn S.p.A. (capogruppo mandataria)
CREW Cremonesi Workshop S.r.l. - TECNOSISTEM S.p.A.
ART Risorse Ambiente Territorio S.r.l. - ECOPLAME S.r.l.

RESPONSABILE INTEGRAZIONE PRESTAZIONI SPECIALISTICHE: Dott. Ing. Antonio ORLANDO (ProgIn S.p.A.)
PROGETTISTA FIRMATARIO: Dott. Ing. Lorenzo INFANTE (ProgIn S.p.A.)
CAPOGRUPPO MANDATARIA: PROGIn S.p.A.
MANDANTIS: CREW, TECNOSISTEM, ECOPLAME

RESPONSABILE STUDIO IMPATTO AMBIENTALE: Dott. Arch. Salvatore SCOPPIETTA (ProgIn S.p.A.)
IL GEOLOGO: Dott. Geol. Giovanni CARRA (ART Ambiente Risorse e Territorio S.r.l.)
IL COORDINATORE PER LA SICUREZZA IN FASE DI PROGETTAZIONE: Dott. Ing. Michele CURATELLO (ProgIn S.p.A.)

VISTO IL RESPONSABILE DEL PROCEDIMENTO: Dott. Ing. Achille DEVOTOFRANCESCO

PROTOCOLLO DATA 202...

STUDIO IMPATTO AMBIENTALE
ANALISI DELLO STATO DELL'AMBIENTE
SEZIONI PAESAGGISTICHE LOTTO 2

CODICE PROGETTO	NOME FILE	REVISIONE	SCALA:
D P R M 3 8 0 D 2 0	TOZIA02AMBCT14A.DWG	A	1:1500
CODICE ELAB.	T021A02AMBCT14		

A	Prima emissione	Novembre 2021	D. D'Agostino	E. Scaroni	P. Pisano
REV.	DESCRIZIONE	DATA	REDATTO	VERIFICATO	APPROVATO