

NOTE

- EVENTUALI DIFFERENZE TRA LE MISURE DI QUOTE TOTALI E LA SOMMATORIA DELLE MISURE DI QUOTE PARZIALI SONO DOVUTE AD ARROTONDAMENTI AUTOMATICI
- PER LE CARATTERISTICHE DEI MATERIALI E NOTE DI CARATTERE GENERALE SI RIMANDA ALL'ELABORATO SPECIFICO DI RIFERIMENTO IN T010D26TTCC0000001A

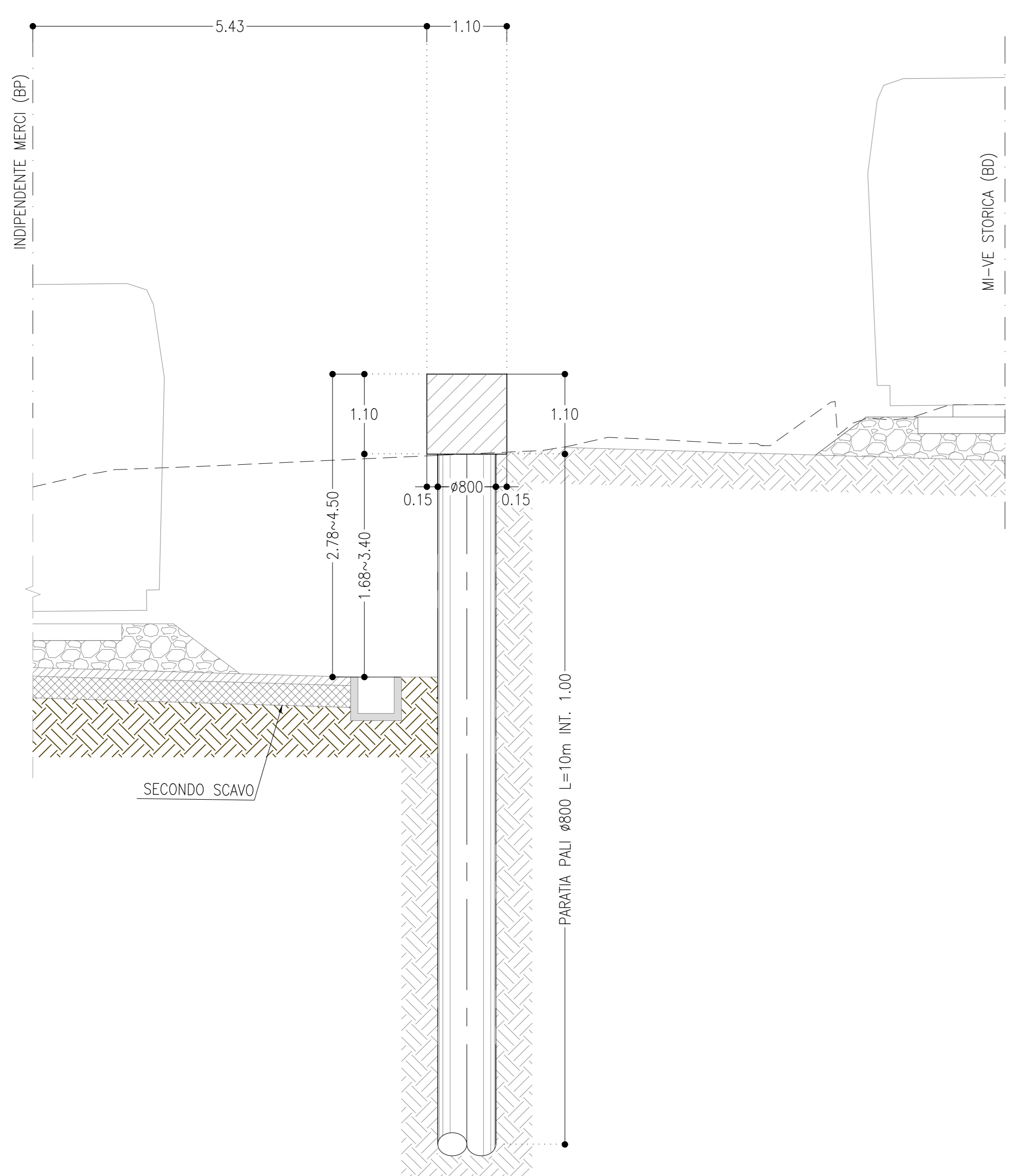
MU02		
PALI	DIAMETRO	ø 800 mm
	NUMERO	151
	LUNGHEZZA	10,00 m



SEZIONE MURI - MU02

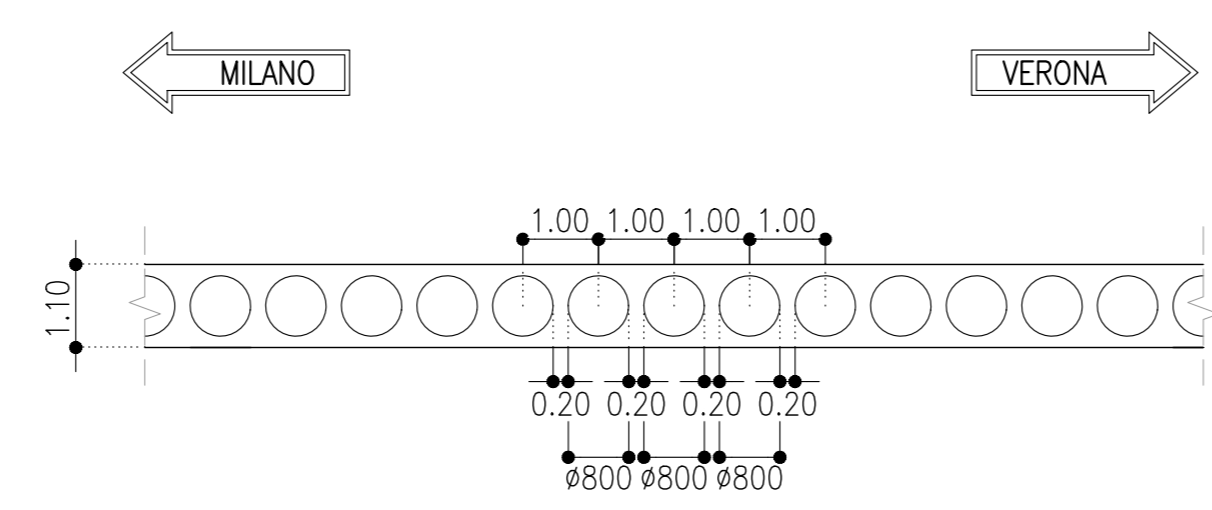
SCALA 1:50

SEZIONE TRASVERSALE



PIANTA TIPOLOGICA

SCALA 1:100



COORDINATE DI CORDOLO DI TESTATA MURI-MU02

PUNTO	X	Y
N1	1649422.827	5032221.248
N2	1649596.700	5032213.888
S1	1649422.743	5032220.151
S2	1649596.685	5032212.788

COORDINATE DI TRACCIAMENTO MURI-MU02

PUNTO	X	Y
P01	1649423.334	5032220.658
P02	1649424.333	5032220.582
P03	1649425.328	5032220.506
P04	1649426.325	5032220.431
P05	1649427.322	5032220.357
P06	1649428.319	5032220.282
P07	1649429.317	5032220.208
P08	1649430.314	5032220.135
P09	1649431.311	5032220.062
P10	1649432.309	5032219.989
P11	1649433.306	5032219.916
P12	1649434.303	5032219.844
P13	1649435.301	5032219.773
P14	1649436.298	5032219.701
P15	1649437.296	5032219.631
P16	1649438.293	5032219.560
P17	1649439.291	5032219.490
P18	1649440.288	5032219.420
P19	1649441.286	5032219.351
P20	1649442.284	5032219.282
P21	1649443.281	5032219.213
P22	1649444.279	5032219.145
P23	1649445.277	5032219.077
P24	1649446.274	5032219.010
P25	1649447.272	5032218.943
P26	1649448.270	5032218.876
P27	1649449.268	5032218.810
P28	1649450.266	5032218.744
P29	1649451.263	5032218.678
P30	1649452.261	5032218.613
P31	1649453.259	5032218.548
P32	1649454.257	5032218.484
P33	1649455.255	5032218.420
P34	1649456.253	5032218.356
P35	1649457.251	5032218.293
P36	1649458.249	5032218.230
P37	1649459.247	5032218.168
P38	1649460.245	5032218.106
P39	1649461.243	5032218.044
P40	1649462.241	5032217.983
P41	1649463.240	5032217.922
P42	1649464.238	5032217.861
P43	1649465.236	5032217.801
P44	1649466.234	5032217.741
P45	1649467.232	5032217.682
P46	1649468.231	5032217.623
P47	1649469.229	5032217.564
P48	1649470.227	5032217.506
P49	1649471.225	5032217.448
P50	1649472.224	5032217.391
P51	1649473.222	5032217.333

COORDINATE DI TRACCIAMENTO MURI-MU02

PUNTO	X	Y
P52	1649474.221	5032217.277
P53	1649475.219	5032217.220
P54	1649476.217	5032217.164
P55	1649477.216	5032217.109
P56	1649478.214	5032217.054
P57	1649479.213	5032216.999
P58	1649480.211	5032216.944
P59	1649481.210	5032216.890
P60	1649482.208	5032216.837
P61	1649483.207	5032216.783
P62	1649484.206	5032216.730
P63	1649485.204	5032216.678
P64	1649486.203	5032216.626
P65	1649487.202	5032216.574
P66	1649488.200	5032216.523
P67	1649489.199	5032216.472
P68	1649490.198	5032216.421
P69	1649491.196	5032216.371
P70	1649492.195	5032216.321
P71	1649493.194	5032216.272
P72	1649494.193	5032216.222
P73	1649495.192	5032216.174
P74	1649496.190	5032216.125
P75	1649497.189	5032216.078
P76	1649498.188	5032216.030
P77	1649499.187	5032215.983
P78	1649500.186	5032215.936
P79	1649501.185	5032215.890
P80	1649502.184	5032215.844
P81	1649503.183	5032215.798
P82	1649504.182	5032215.753
P83	1649505.181	5032215.708
P84	1649506.180	5032215.663
P85	1649507.179	5032215.619
P86	1649508.178	5032215.576
P87	1649509.177	5032215.532
P88	1649510.176	5032215.489
P89	1649511.175	5032215.447
P90	1649512.174	5032215.404
P91	1649513.173	5032215.363
P92	1649514.172	5032215.321
P93	1649515.172	5032215.280
P94	1649516.171	5032215.240
P95	1649517.170	5032215.199
P96	1649518.169	5032215.159
P97	1649519.168	5032215.120
P98	1649520.168	5032215.081
P99	1649521.167	5032215.042
P100	1649522.166	5032215.004
P101	1649523.165	5032214.966
P102	1649524.165	5032214.928

COORDINATE DI TRACCIAMENTO MURI-MU02

PUNTO	X	Y
P103	1649525.164	5032214.891
P104	1649526.163	5032214.854
P105	1649527.163	5032214.818
P106	1649528.162	5032214.781
P107	1649529.161	5032214.746
P108	1649530.161	5032214.711
P109	1649531.160	5032214.676
P110	1649532.159	5032214.641
P111	1649533.159	5032214.607
P112	1649534.158	5032214.573
P113	1649535.158	5032214.540
P114	1649536.157	5032214.507
P115	1649537.157	5032214.474
P116	1649538.157	5032214.442
P117	1649539.157	5032214.410
P118	1649540.157	5032214.377
P119	1649541.156	5032214.344
P120	1649542.156	5032214.312
P121	1649543.156	5032214.279
P122	1649544.156	5032214.247
P123	1649545.156	5032214.214
P124	1649546.156	5032214.182
P125	1649547.156	5032214.149
P126	1649548.155	5032214.117
P127	1649549.155	5032214.084
P128	1649550.155	5032214.052
P129	1649551.155	5032214.020
P130	1649552.155	5032213.987
P131	1649553.155	5032213.954
P132	1649554.154	5032213.922
P133	1649555.154	5032213.889
P134	1649556.154	5032213.857
P135	1649557.154	5032213.824
P136	1649558.154	5032213.792
P137	1649559.154	5032213.760
P138	1649560.154	5032213.727
P139	1649561.153	5032213.694
P140	1649562.153	5032213.662
P141	1649563.153	5032213.630
P142	1649564.153	5032213.597
P143	1649565.153	5032213.564
P144	1649566.153	5032213.532
P145	1649567.152	5032213.500
P146	1649568.152	5032213.467
P147	1649569.152	5032213.434
P148	1649570.152	5032213.402
P149	1649571.152	5032213.370
P150	1649572.152	5032213.337
P151	1649573.152	5032213.304

COMMITTENTE:

PROGETTAZIONE:

INFRASTRUTTURE FERROVIARIE STRATEGICHE DEFINITE DALLA LEGGE OBIETTIVO N. 443/01 e s.m.i

CUP: J14H02000440001

U.O. PROGETTAZIONE INTEGRATA NORD

PROGETTO DEFINITIVO

LINEA AV/AC MILANO - VENEZIA LOTTO FUNZIONALE TRATTA AV/AC BRESCIA EST - VERONA

NODO AV/AC DI VERONA: INGRESSO OVEST

RI - OPERE DI SOSTEGNO SEDE FERROVIARIA E STRADALE

MURI DI SOSTEGNO - PIANTE, SEZIONI E SCAVI
TAV. 2/15

SCALA:
1 : 200

COMMESSA	LOTTO	FASE	ENTE	TIPO DOC.	OPERA/DISCIPLINA	PROGR.	REV.
IN10	10	D	26	B9	MU0005	002	A

Rev.	Descrizione	Redatto	Data	Verificato	Data	Approvato	Data	Autorizzato / Data
A	EMISSIONE ESECUTIVA	P. Cuccini	Ser 2021	M. Rigo	Ser 2021	C. Mazzoni	Ser 2021	A. Perregò Ser 2021