

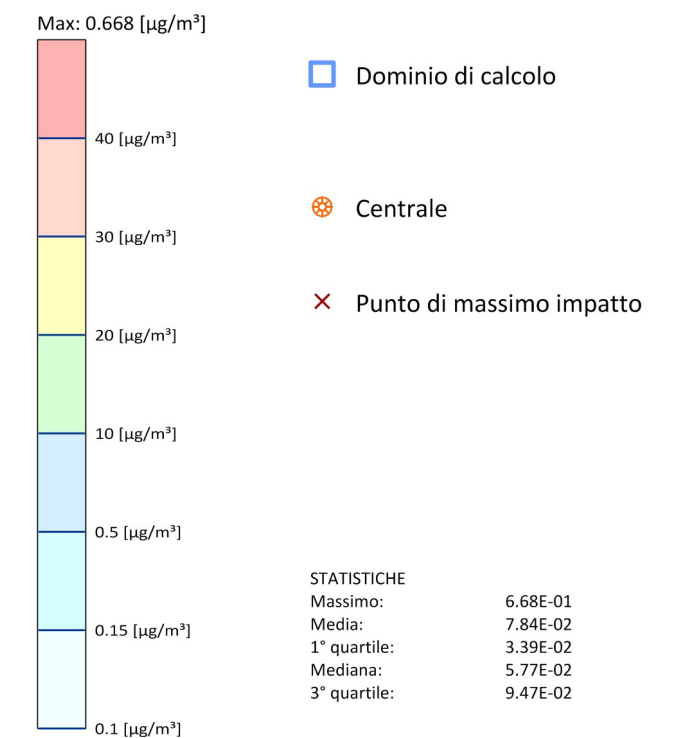


Tavola AV-01.a
 Scenario "Autorizzato"
 (area vasta)

**Ricadute delle emissioni
 convogliate al camino**

NO₂ - Concentrazione media annua [$\mu\text{g}/\text{m}^3$]

Valore Limite (D.Lgs. 155/2010): 40 [$\mu\text{g}/\text{m}^3$]



Sistema di Riferimento
 ETRS89 / UTM zona 32N

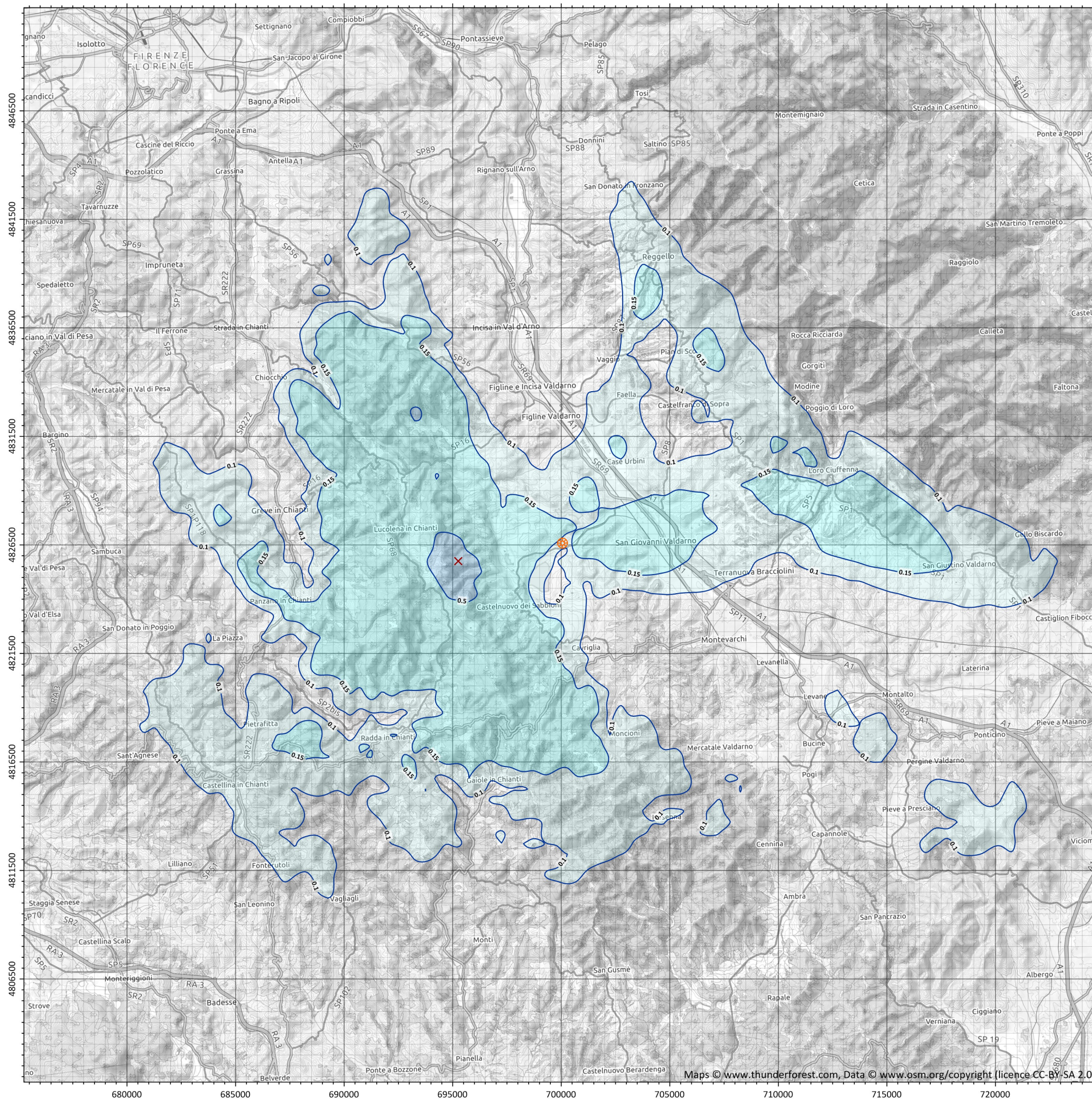
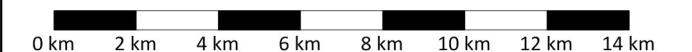
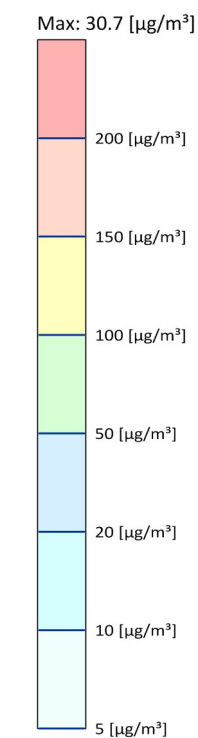
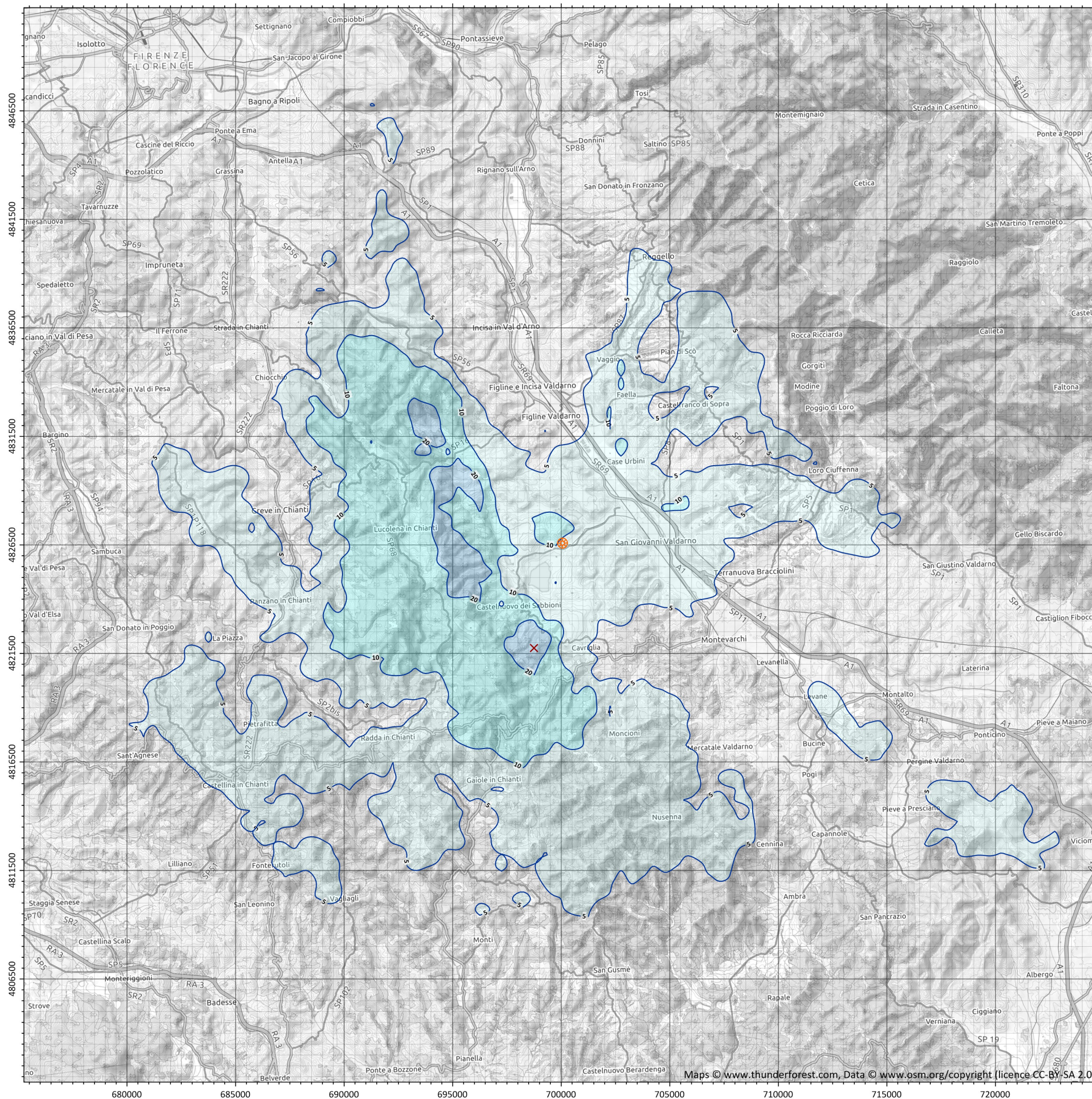







Tavola AV-02.a
 Scenario "Autorizzato"
 (area vasta)


**Ricadute delle emissioni
 convogliate al camino**

**NO₂ - Concentrazione oraria
 superata 18 volte per anno civile [µg/m³]**
 Valore Limite (D.Lgs. 155/2010): 200 [µg/m³]



-  Dominio di calcolo
-  Centrale
-  Punto di massimo impatto

STATISTICHE	
Massimo:	3.07E+01
Media:	3.65E+00
1° quartile:	1.58E+00
Mediana:	2.50E+00
3° quartile:	4.48E+00

 Sistema di Riferimento
 ETRS89 / UTM zona 32N

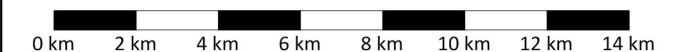




Tavola AV-03.a
 Scenario "Autorizzato"
 (area vasta)

**Ricadute delle emissioni
 convogliate al camino**

NO_x - Concentrazione media annua [$\mu\text{g}/\text{m}^3$]
 (protezione della vegetazione)
 Livello Critico (D.Lgs. 155/2010): 30 [$\mu\text{g}/\text{m}^3$]

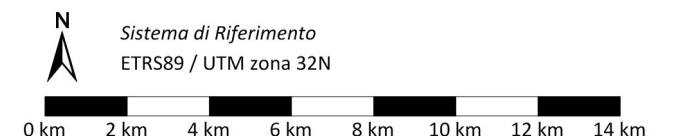
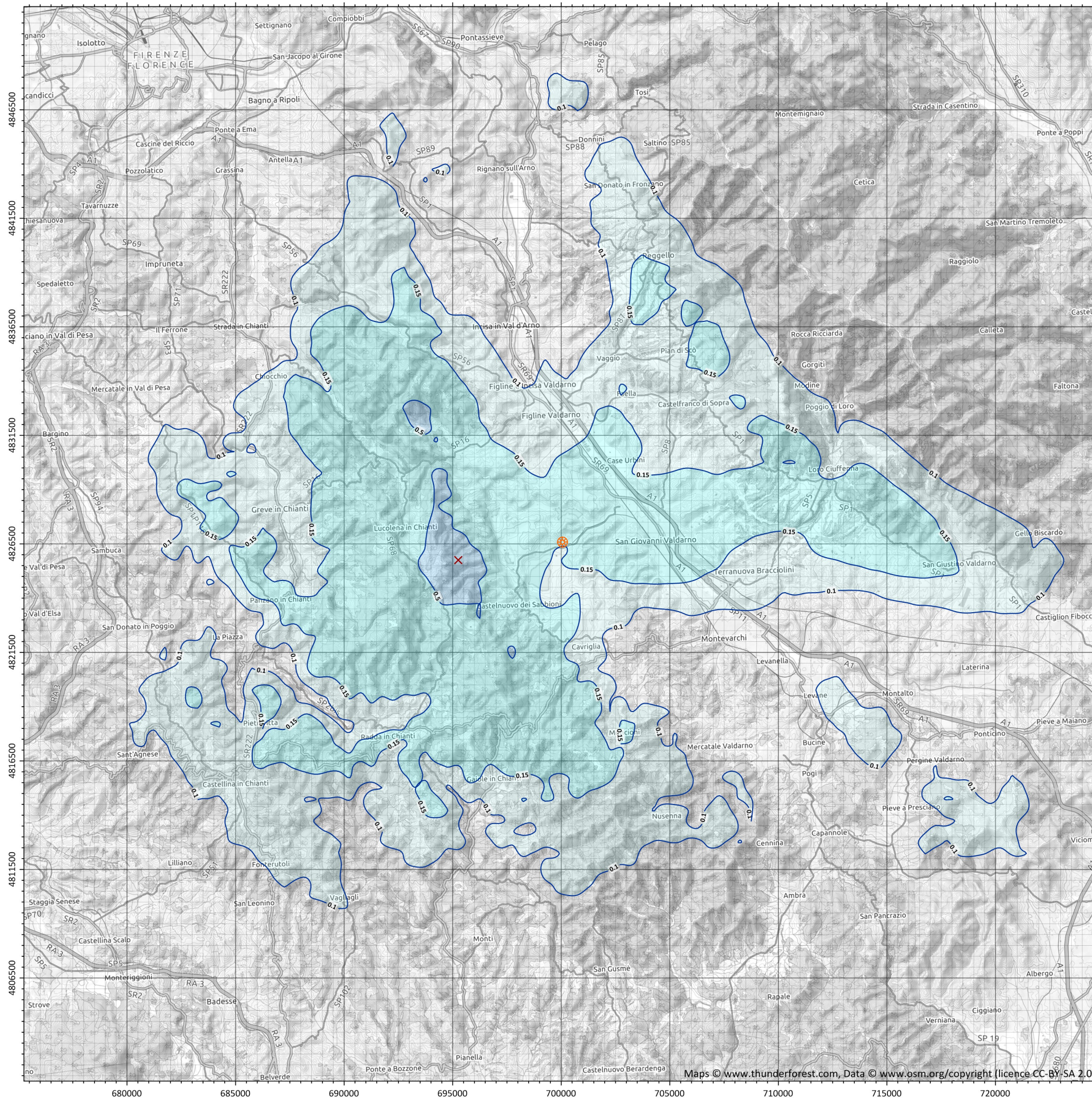


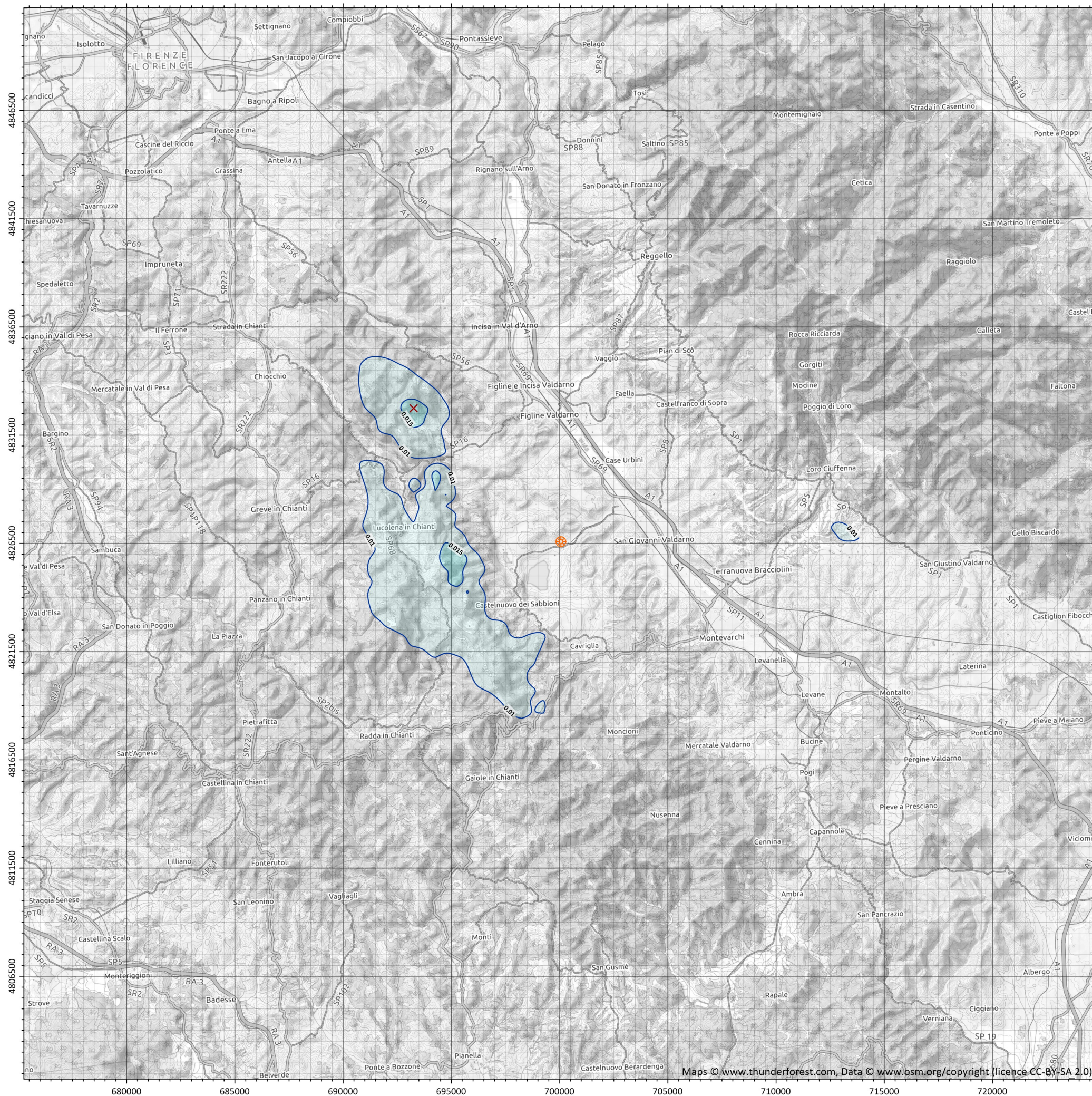
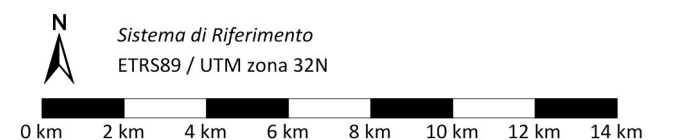
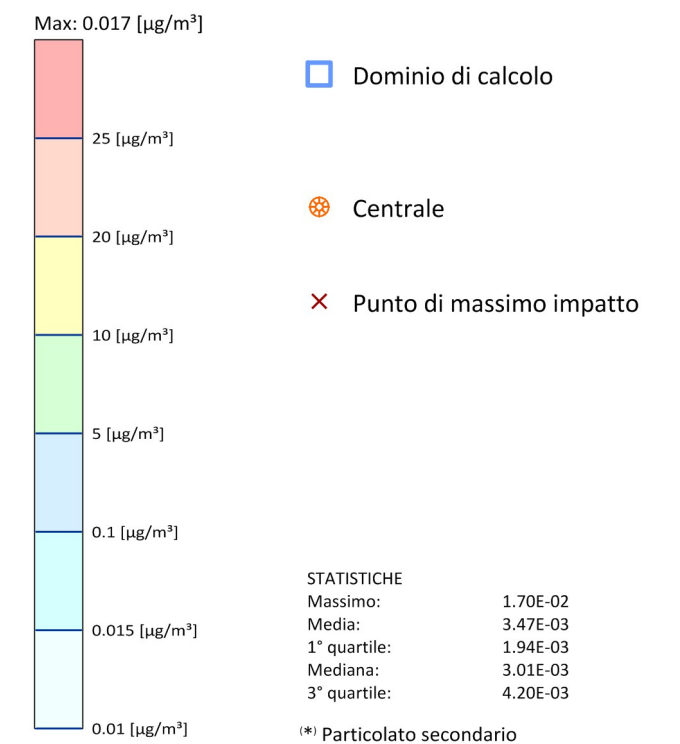


Tavola AV-04.a
 Scenario "Autorizzato"
 (area vasta)

**Ricadute delle emissioni
 convogliate al camino**

SPM^(*) - Concentrazione media annua [$\mu\text{g}/\text{m}^3$]

Limite di legge (D.Lgs. 155/2010):
 40 $\mu\text{g}/\text{m}^3$ (applicabile a PM₁₀) e 25 $\mu\text{g}/\text{m}^3$ (applicabile a PM_{2,5})



**Scala cromatica modificata rispetto alle tavole degli altri scenari
 per consentire la visualizzazione delle basse concentrazioni**

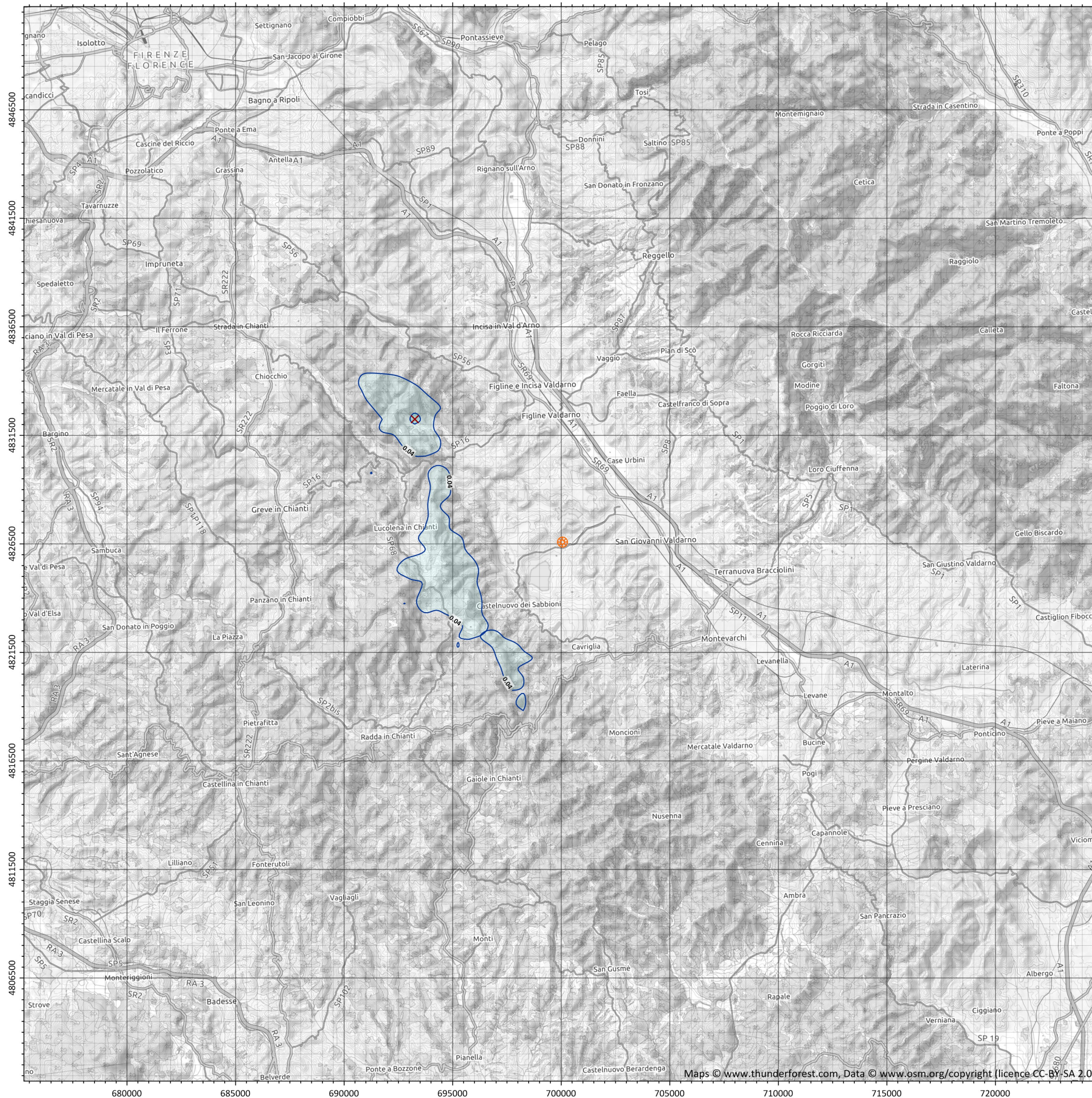
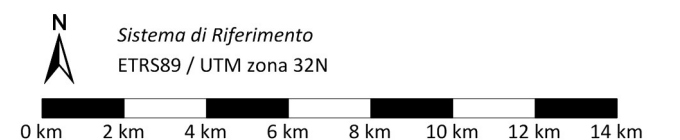
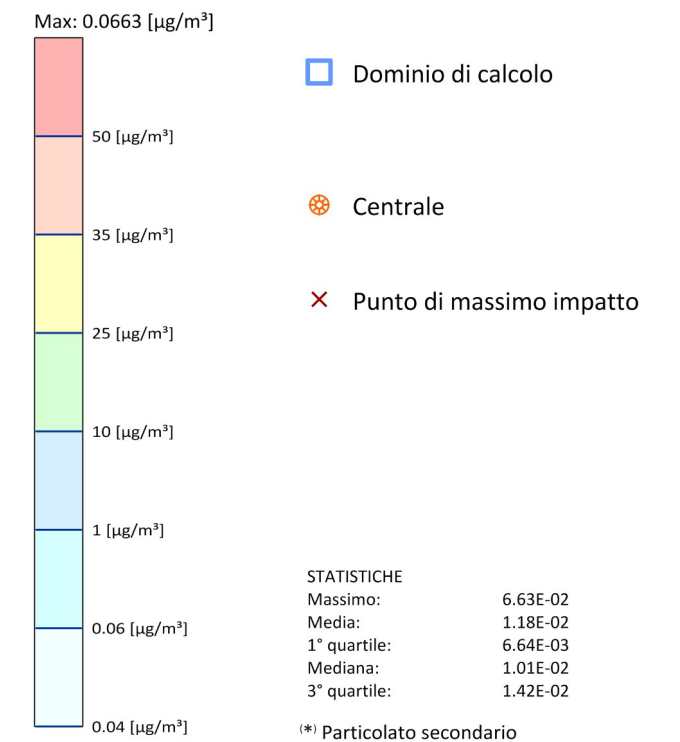


Tavola AV-05.a
 Scenario "Autorizzato"
 (area vasta)

**Ricadute delle emissioni
 convogliate al camino**

SPM(*) - Concentrazione giornaliera
 superata 35 volte per anno civile [$\mu\text{g}/\text{m}^3$]

Limite di legge (D.Lgs. 155/2010): 50 $\mu\text{g}/\text{m}^3$ (applicabile a PM₁₀)



**Scala cromatica modificata rispetto alle tavole degli altri scenari
 per consentire la visualizzazione delle basse concentrazioni**



Tavola AV-06.a
 Scenario "Autorizzato"
 (area vasta)

**Ricadute delle emissioni
 convogliate al camino**

CO - Concentrazione media massima giornaliera calcolata su 8 ore [mg/m³]
 Valore Limite (D.Lgs. 155/2010): 10 [mg/m³]

