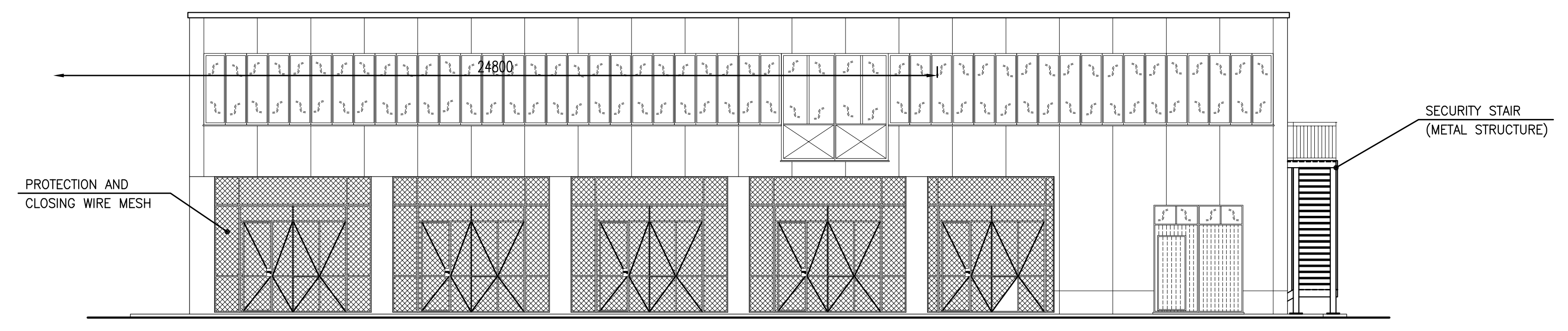
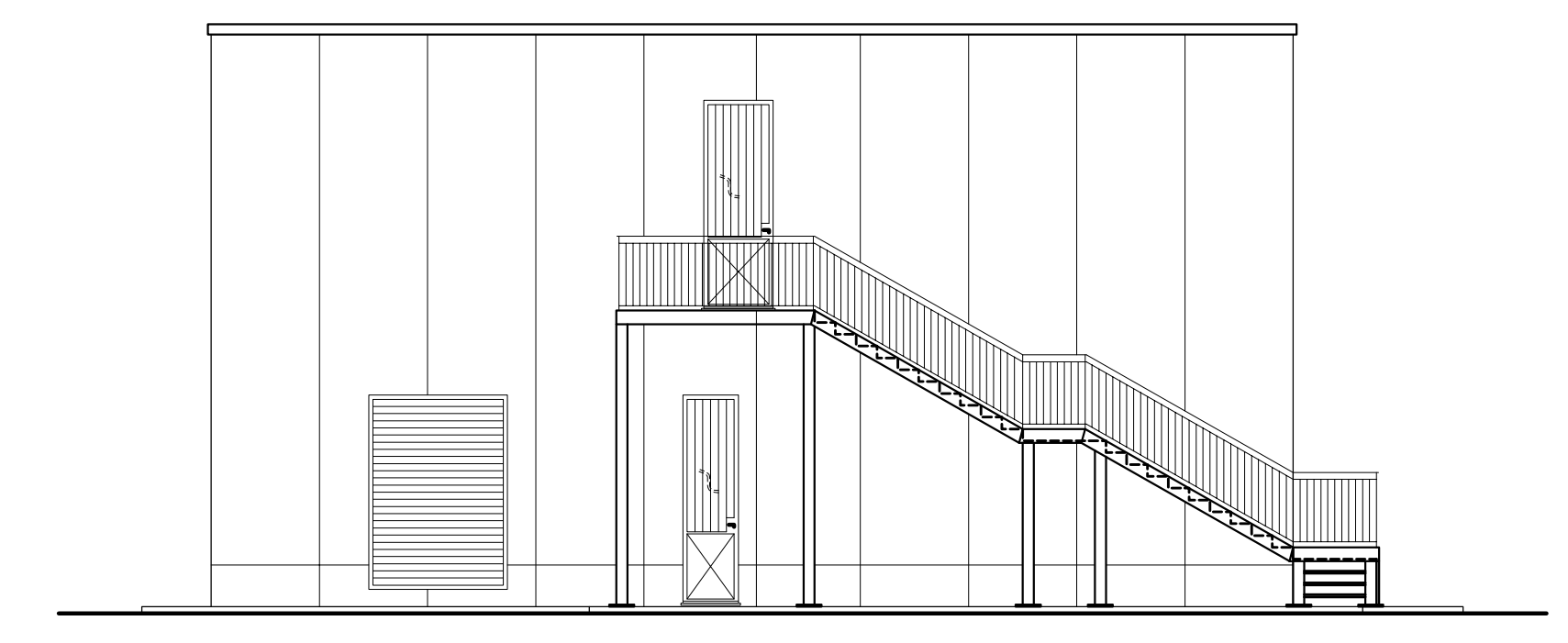
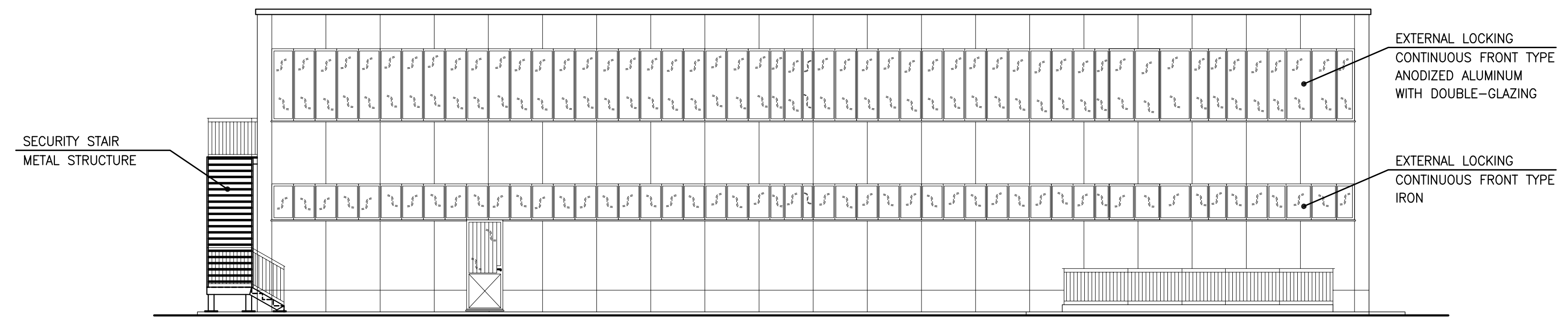
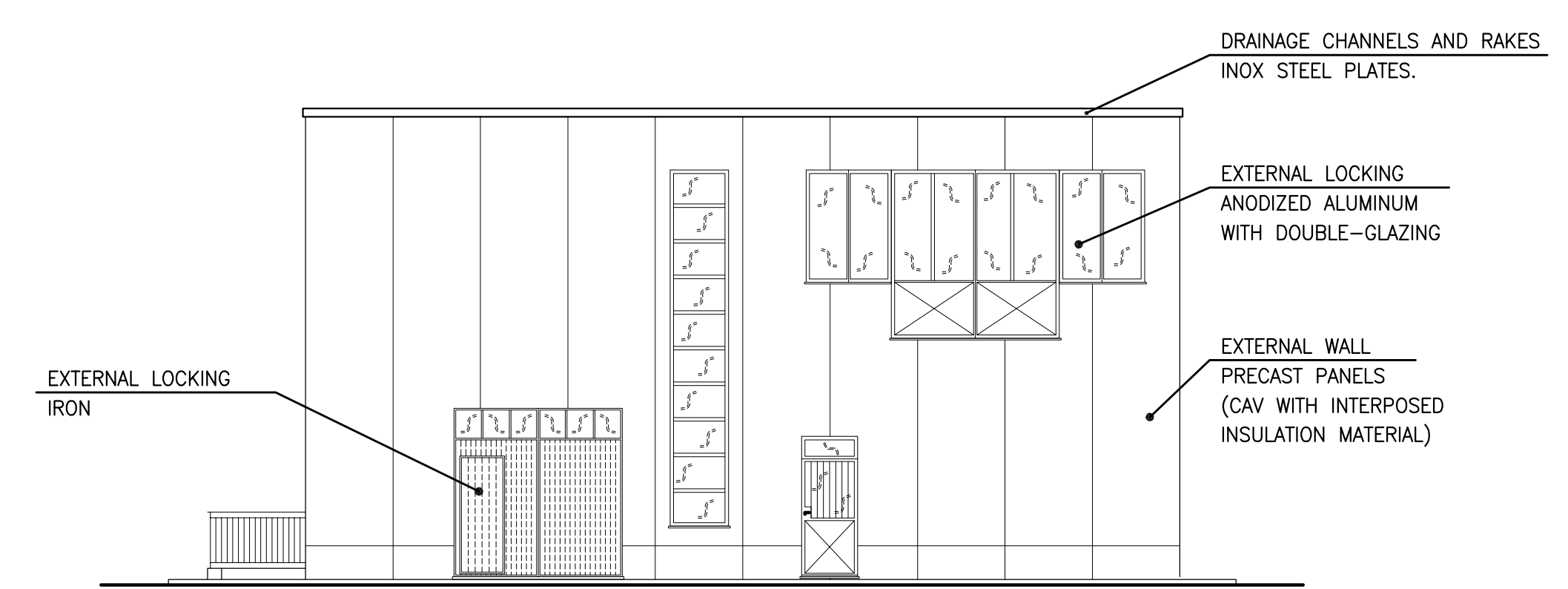


NOTE:

- ALL ELEVATIONS ARE REFERRED TO PLANT LEVEL ±0.00 CORRESPONDING TO m. 148 L.A.T.
- ALL DIMENSIONS AND ALL ELEVATIONS ARE EXPRESSED IN mm.
- TRANSFORMERS AREA: THE AREA WILL BE OPENED TOWARDS THE EXTERIOR WITH PROTECTION AND CLOSING WIRE MESH (INCLUDING GATES AND WICKETS).
- WINDOWS FRAMES AT THE FIRST FLOOR AND AT THE GROUND FLOOR WILL BE CONTINUOUS FRONT TYPE.
- THE MINIMUM NATURAL VENTILATION AND NATURAL LIGHTING OF THE ROOMS SHOULD BE GUARANTEED BY OPENING ITS GLASSES, AS REQUIRED BY EXISTING LAWS.
- HVAC SYSTEM WILL BE LOCATED ON THE ROOF.
- VENTS ON THE ROOF WILL BE FORESEEN FOR SANITARY FITTINGS/EQUIPMENTS.
- DRAINAGE CHANNELS AND RAKES WILL BE IN INOX STEEL PLATES.



REV.	DATA	DESCRIPTION / DESCRIPTION	DESIGN	CONTR.	APPROV.	STATO	REV.
V00	Luglio 10	Emissione					

		SAN BENEDETTO STOCCAGGIO	
IMPIANTO STOCCAGGIO GAS PLANIMETRIA PALAZZINA MULTIUSO, SEZIONI E VISTE			
SCALA:	SOTTOSUOLO:	SOTTOSUOLO:	IDENTIFICATIVO DOCUMENTO
1:100			101SBP-00-CSS-LY-05006
			1 / 1