

FERROVIA BP V PLAN BP.1		FERROVIA BP V PLAN BP.2		FERROVIA BP V PLAN BP.3		FERROVIA BP V PLAN BP.4		FERROVIA BP V PLAN BP.5		FERROVIA BP V PLAN BP.6	
X	2351710.329	X	2351816.430	X	2351875.770	X	2352271.340	X	2352983.998	X	2353224.714
Y	5072175.471	Y	5072231.323	Y	5072289.893	Y	5072466.442	Y	5072724.330	Y	5072725.904
Asin	69.689733	Asin	69.689733	Asin	69.689733	Asin	69.689733	Asin	69.689733	Asin	69.689733
R(m)	17000.000	R(m)	17000.000	R(m)	17000.000	R(m)	17000.000	R(m)	17000.000	R(m)	17000.000
Sv(m)	30.988	Sv(m)	30.988	Sv(m)	31.888	Sv(m)	31.888	Sv(m)	31.888	Sv(m)	31.888
Alfa	0.115858	Alfa	0.115858	Alfa	0.292432	Alfa	0.292432	Alfa	0.292432	Alfa	0.292432
Alfa tot	0.172031	Alfa tot	0.172031	Alfa tot	0.408201	Alfa tot	0.408201	Alfa tot	0.408201	Alfa tot	0.408201
Tarco	15.460	Tarco	15.460	Tarco	18.950	Tarco	18.950	Tarco	18.950	Tarco	18.950

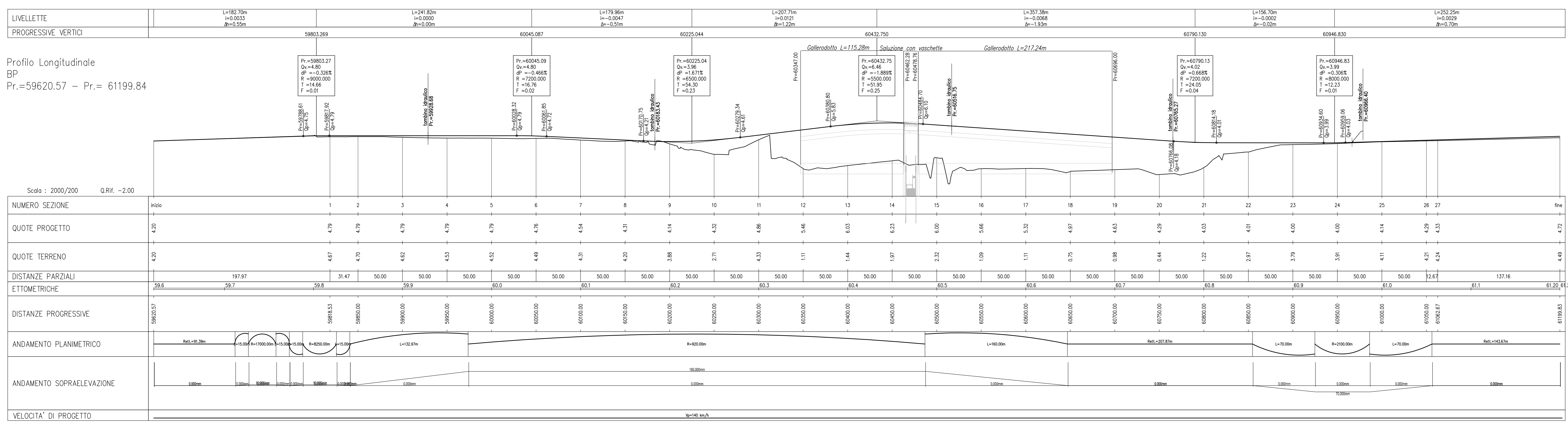
V ALT BP.1		V ALT BP.2		V ALT BP.3		V ALT BP.4		V ALT BP.5		V ALT BP.6		V ALT BP.7		V ALT BP.8	
PR	59620.569	PR	59603.269	PR	60045.087	PR	60225.044	PR	60432.750	PR	60790.130	PR	60946.830	PR	61199.084
QV	4.200	QV	4.795	QV	4.795	QV	3.957	QV	3.957	QV	4.015	QV	3.990	QV	4.721
Pc	0.003	Pc	0.003	Pc	0.000	Pc	-0.005	Pc	0.012	Pc	-0.007	Pc	-0.005	Pc	-0.005
Pu	0.000	Pu	0.000	Pu	-0.005	Pu	0.012	Pu	-0.007	Pu	-0.000	Pu	0.003	Pu	0.003
DP	-0.003	DP	-0.003	DP	-0.005	DP	0.017	DP	-0.007	DP	0.007	DP	0.003	DP	0.003
R	9000.000	R	9000.000	R	7200.000	R	-9500.000	R	5500.000	R	-7200.000	R	-8000.000	R	-8000.000
T	14.656	T	14.656	T	16.764	T	16.764	T	24.058	T	24.058	T	12.237	T	12.237
F	-0.012	F	-0.012	F	-0.020	F	0.227	F	-0.245	F	0.040	F	0.009	F	0.009
Pv_I	59789.614	Pv_I	59789.614	Pv_I	60028.323	Pv_I	60170.747	Pv_I	60380.801	Pv_I	60766.076	Pv_I	60934.600	Pv_I	61199.084
Pv_f	59817.604	Pv_f	59817.604	Pv_f	60081.851	Pv_f	60276.338	Pv_f	60484.702	Pv_f	60814.185	Pv_f	60986.960	Pv_f	61199.084

FERROVIA BD V PLAN BD.1		FERROVIA BD V PLAN BD.2		FERROVIA BD V PLAN BD.3		FERROVIA BD V PLAN BD.4		FERROVIA BD V PLAN BD.5		FERROVIA BD V PLAN BD.6		FERROVIA BD V PLAN BD.7		FERROVIA BD V PLAN BD.8	
X	2351783.033	X	2351783.033	X	2352271.370	X	2352271.370	X	2352991.031	X	2352991.031	X	2353224.714	X	2353224.714
Y	5072178.626	Y	5072178.626	Y	5072470.650	Y	5072470.650	Y	5072796.746	Y	5072796.746	Y	5072725.439	Y	5072725.439
Asin	69.689732	Asin	69.689732	Asin	69.508957	Asin	69.508957	Asin	69.508957	Asin	69.508957	Asin	69.508957	Asin	69.508957
R(m)	17000.000	R(m)	17000.000	R(m)	17000.000	R(m)	17000.000	R(m)	17000.000	R(m)	17000.000	R(m)	17000.000	R(m)	17000.000
Sv(m)	30.988	Sv(m)	30.988	Sv(m)	31.888	Sv(m)	31.888	Sv(m)	31.888	Sv(m)	31.888	Sv(m)	31.888	Sv(m)	31.888
Alfa	0.114397	Alfa	0.114397	Alfa	0.292432	Alfa	0.292432	Alfa	0.292432	Alfa	0.292432	Alfa	0.292432	Alfa	0.292432
Alfa tot	0.182076	Alfa tot	0.182076	Alfa tot	0.408201	Alfa tot	0.408201	Alfa tot	0.408201	Alfa tot	0.408201	Alfa tot	0.408201	Alfa tot	0.408201
Tarco	19.847	Tarco	19.847	Tarco	26.635	Tarco	26.635	Tarco	30.736	Tarco	30.736	Tarco	30.736	Tarco	30.736

V ALT BD.1		V ALT BD.2		V ALT BD.3		V ALT BD.4		V ALT BD.5		V ALT BD.6		V ALT BD.7		V ALT BD.8	
PR	59621.612	PR	59604.301	PR	60046.713	PR	60227.451	PR	60436.059	PR	60794.022	PR	60950.627	PR	61202.739
QV	4.200	QV	4.795	QV	4.795	QV	3.957	QV	3.957	QV	4.015	QV	3.990	QV	4.721
Pc	0.003	Pc	0.003	Pc	-0.005	Pc	-0.007	Pc	-0.007	Pc	-0.000	Pc	-0.000	Pc	-0.005
Pu	0.000	Pu	0.000	Pu	-0.005	Pu	0.012	Pu	-0.007	Pu	-0.000	Pu	0.003	Pu	0.003
DP	-0.003	DP	-0.003	DP	-0.005	DP	0.017	DP	-0.007	DP	0.007	DP	0.003	DP	0.003
R	9000.000	R	9000.000	R	7200.000	R	-9500.000	R	5500.000	R	-7200.000	R	-8000.000	R	-8000.000
T	14.656	T	14.656	T	16.764	T	16.764	T	24.058	T	24.058	T	12.237	T	12.237
F	-0.012	F	-0.012	F	-0.020	F	0.227	F	-0.245	F	0.040	F	0.009	F	0.009
Pv_I	59789.645	Pv_I	59789.645	Pv_I	60030.022	Pv_I	60173.389	Pv_I	60384.284	Pv_I	60770.009	Pv_I	60938.391	Pv_I	61199.084
Pv_f	59818.957	Pv_f	59818.957	Pv_f	60063.405	Pv_f	60281.511	Pv_f	60487.837	Pv_f	60818.036	Pv_f	60982.864	Pv_f	61199.084



COMMITTENTE: **RFI** RETE FERROVIARIA ITALIANA GRUPPO FERROVIE DELLO STATO ITALIANE

PROGETTAZIONE: **ITALFER** [www.italfer.it](http://www.italfer.it)

CUP: J34H16000620009

U.O. Coordinamento Territoriale Nord

**PROGETTO DI FATTIBILITA' TECNICA ED ECONOMICA**  
**POTENZIAMENTO LINEA VENEZIA TRIESTE**  
 Posti di Movimento e Varianti di Tracciato  
 LOTTO 3: Variante di tracciato a Portogruaro

ELABORATI GENERALI  
 Planoprofilo con cartografia ed indicazioni di tracciamento

SCALA: 1:2000/200

COMMESSA LOTTO FASE ENTE TIPO DOC. OPERA/DISCIPLINA Progr. REV.

I204 30 R 26 L6 CS0000 001 A

Rev.	Descrizione	Redatto	Data	Verificato	Data	Approvato	Data	Autorezzato Data
A	Emissione definitiva	F. Coppo	04/01/2021	C. Laporta	04/01/2021	S. Lo Presti	04/01/2021	A. Parego 04/01/2021

Fig. I20430R26L6CS000001A