






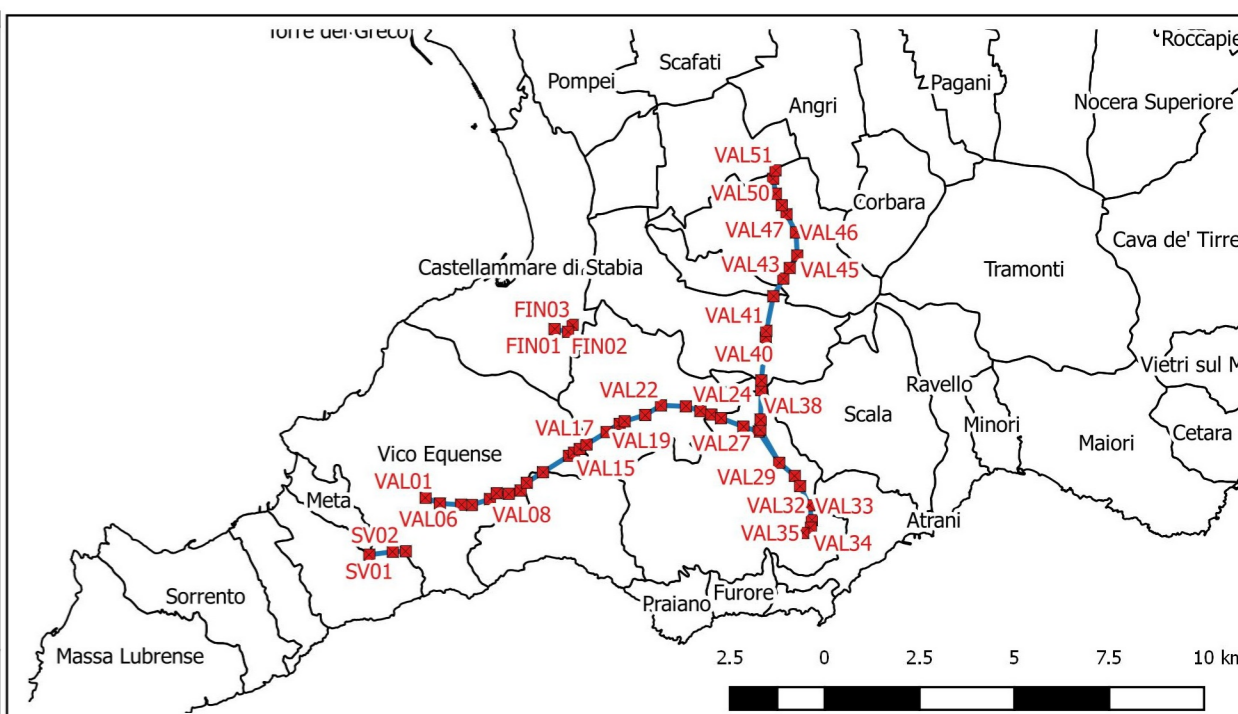
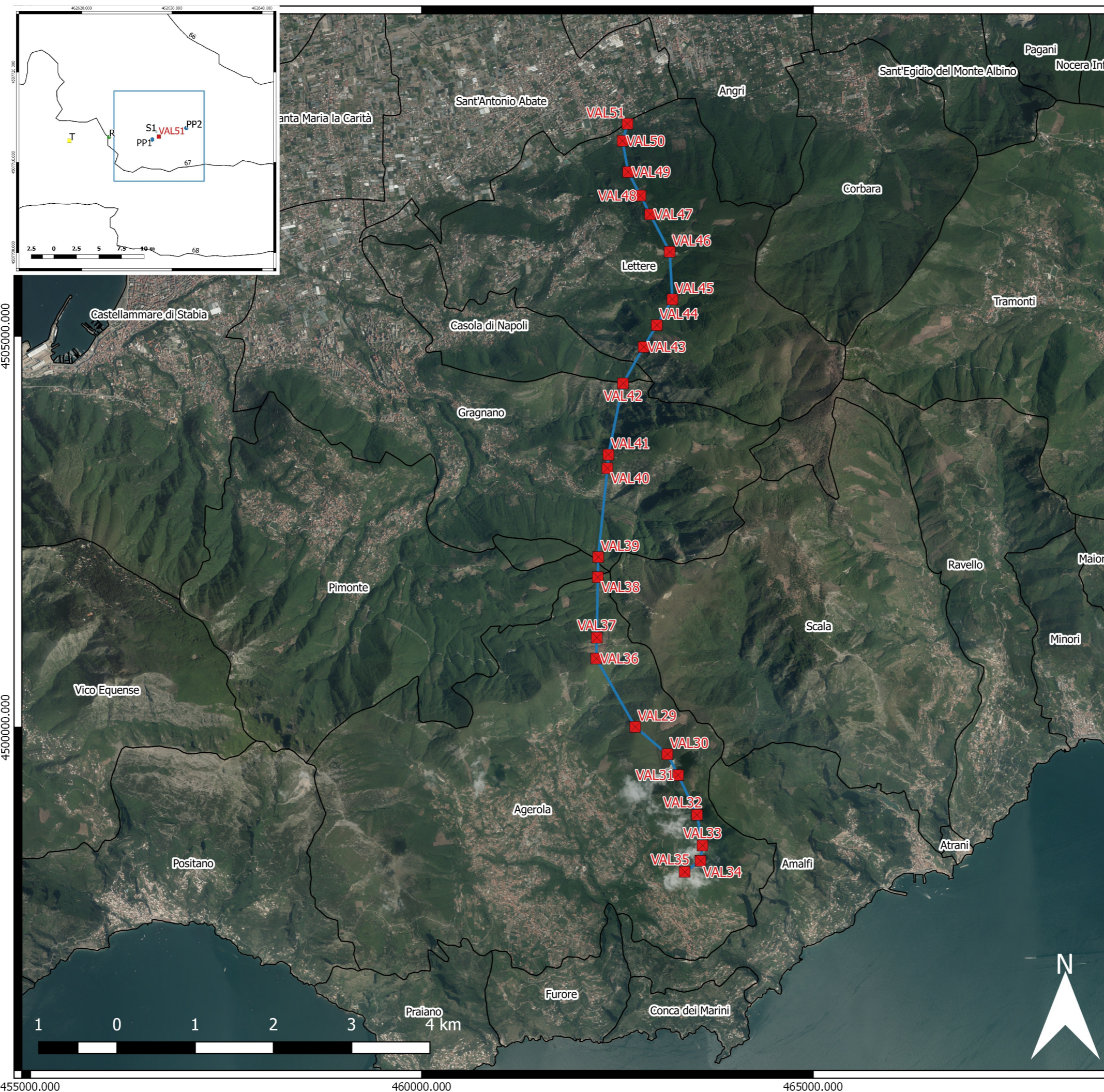
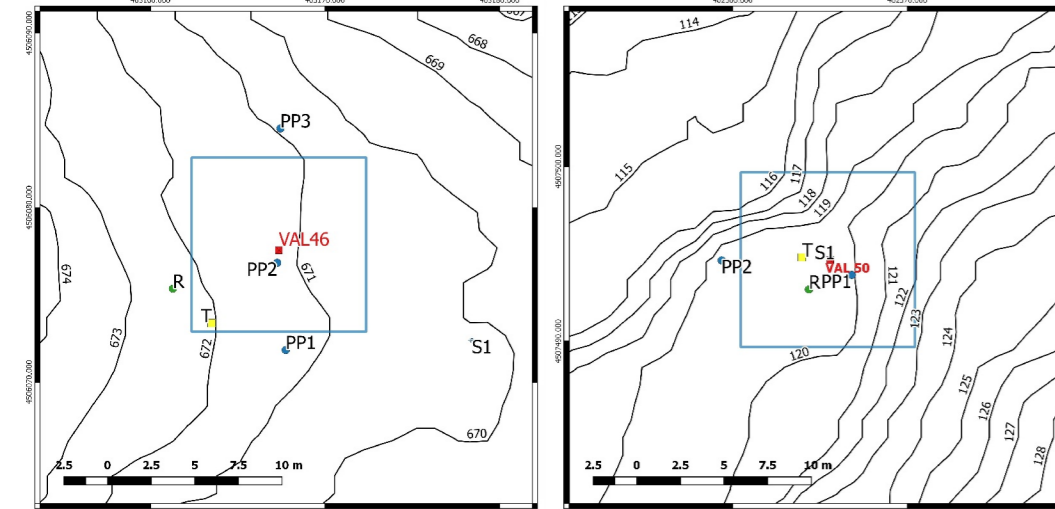
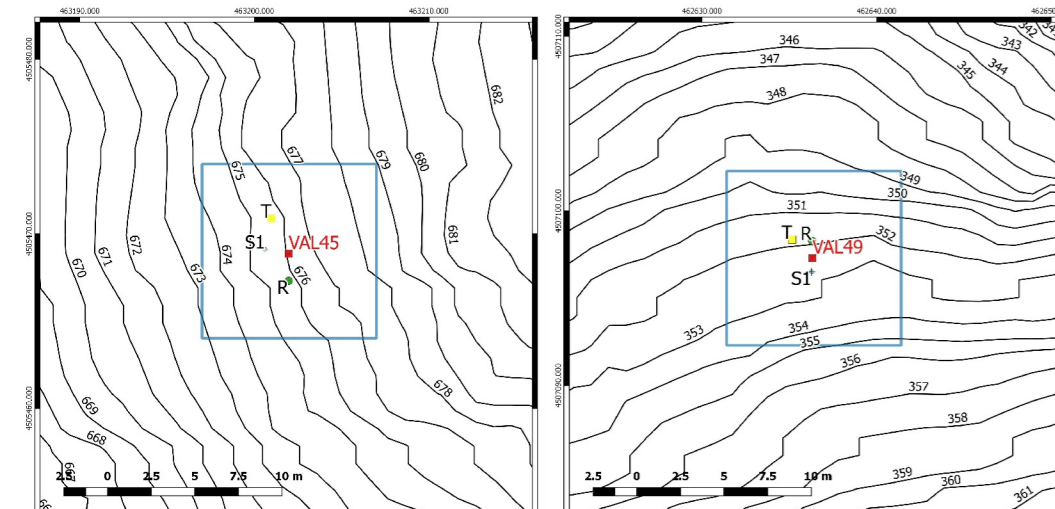
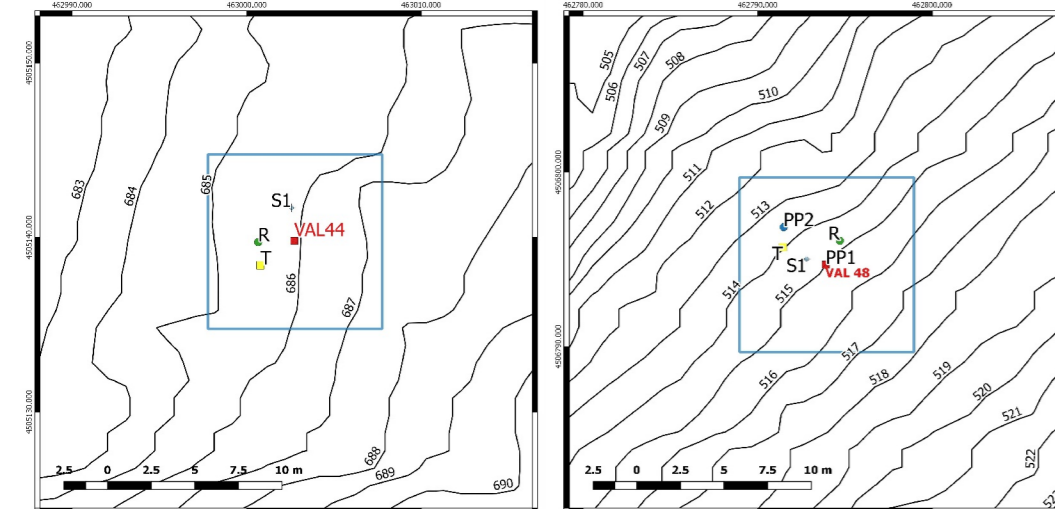
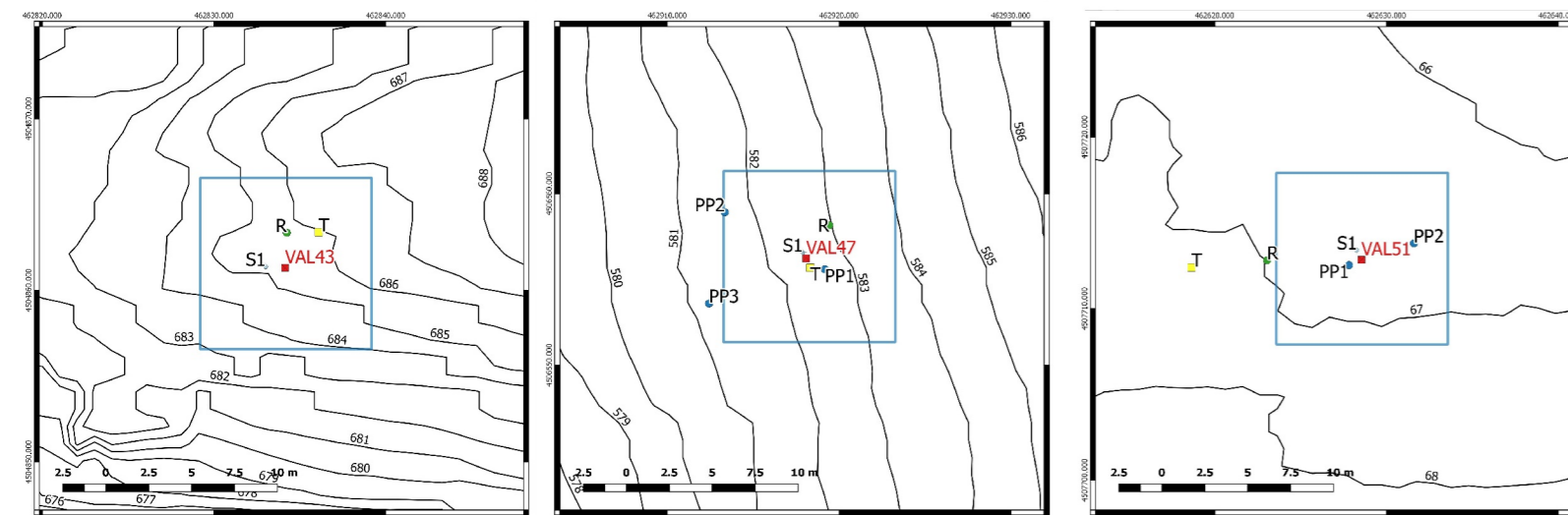
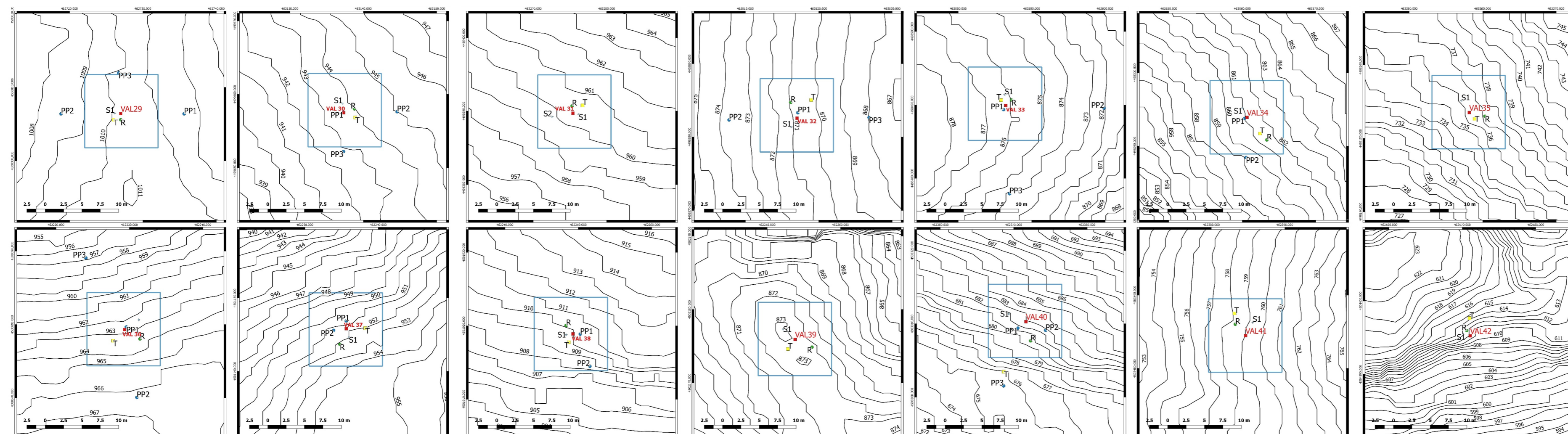


Legenda

Elettrodotti


-  Tratta "Lettere-Agerola"
-  Sostegni
-  Resistività
-  Prove penetrometriche
-  Indagine sismica
-  Sondaggi
-  Area magnetometria



TECNO IN SPA GEOSOLUTIONS						
REVISIONI	N.	DATA	DESCRIZIONE	ELABORATO	VERIFICATO	APPROVATO

REVISIONI					
N.	DATA	DESCRIZIONE	ESAMINATO	ACCETTATO	

NUMERO E DATA ORDINE: \_\_\_\_\_  
 MOTIVO DELL'INVIO:  PER ACCETTAZIONE  PER INFORMAZIONE

CODIFICA ELABORATO			
DEFR19007C2049943		TERNA GROUP	
TITOLO ELABORATO		TIPOLOGIA ELABORATO	
PLANIMETRIA CON UBICAZIONI		Tavola	
DELLE INDAGINI		PROGETTO	
		Interconnessione a 150 KV " SVAL-Monti Lattari"	

NOME DEL FILE	SCALA CAD	FORMATO	SCALA	FOGLIO
DEFR19007C2049943.pdf	1 unità = CAD	420x594 mm	1:50000	1 / 1

Questo documento contiene informazioni di proprietà Terna Rete Italia S.p.A. e deve essere utilizzato esclusivamente dal destinatario in relazione alle finalità per le quali è stato ricevuto. E' vietata qualsiasi forma di riproduzione o di divulgazione senza l'esplicito consenso di Terna Rete Italia S.p.A.  
 This document contains information proprietary to Terna Rete Italia S.p.A. and it will have to be used exclusively for the purposes for which it has been furnished. Whichever shape of spreading or reproduction without the written permission of Terna Rete Italia S.p.A. is prohibited.