

Nome: Nome misura T.H. (File N. 1)

Località: Formia

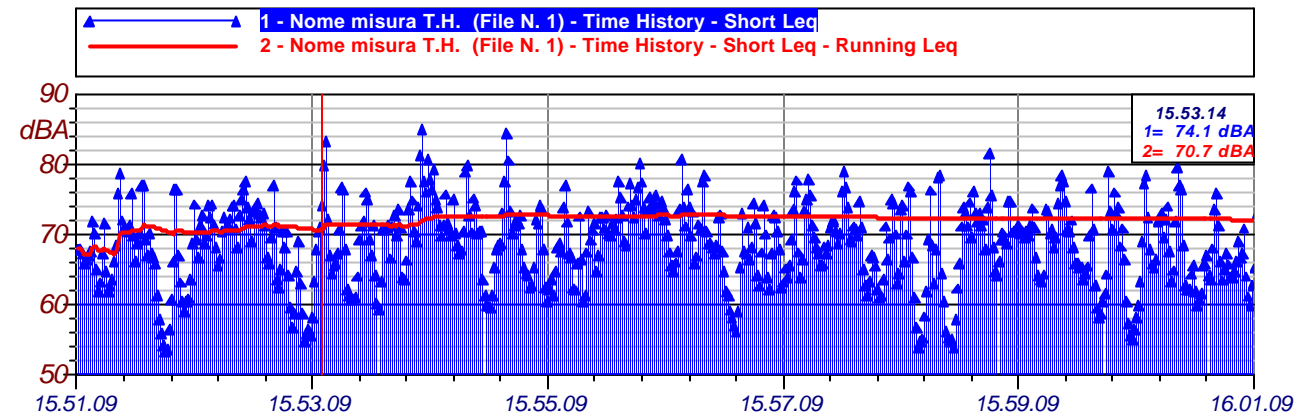
Data: 17/09/2003

Ora: 15.51.09

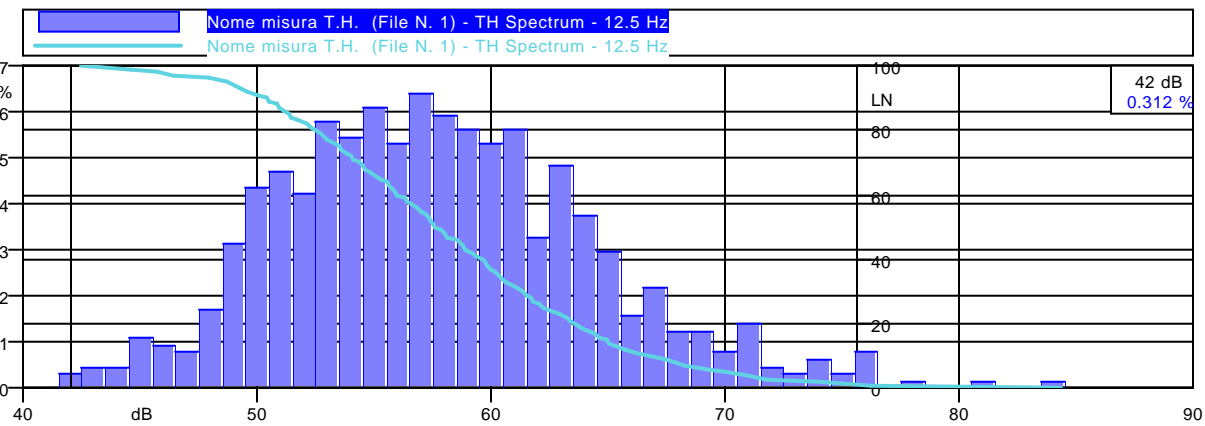
Operatore: Ing. M. Bianchi - Ing. V. Navigari - dott. A. Del Cimmuto

Strumentazione: Larson-Davis 824

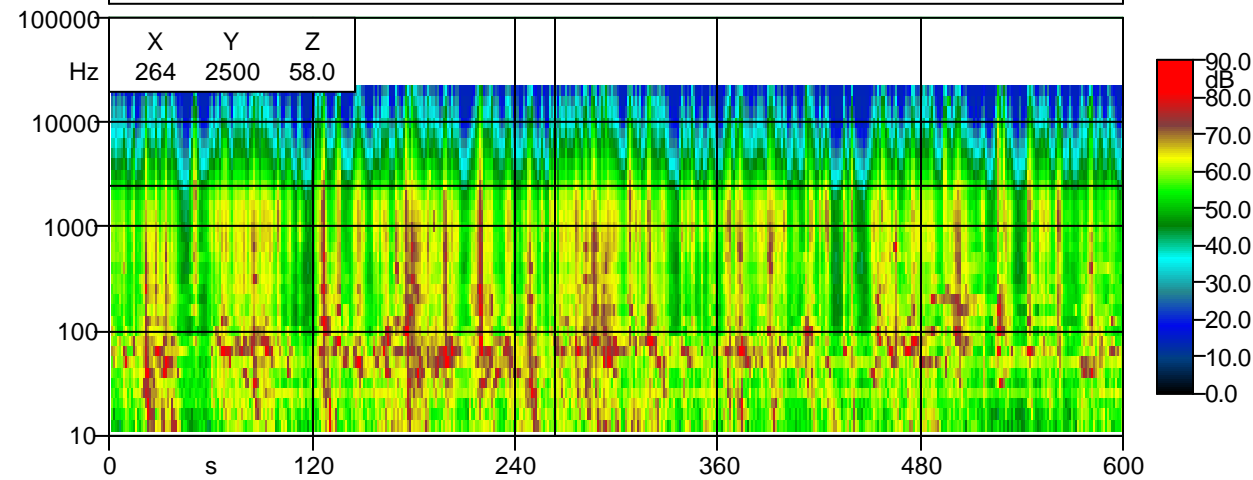
Durata Misura: 641 secondi



<i>Leq (A): 72.0 dBA</i>	<i>Leq (C): 78.5 dBC</i>	<i>Leq (Lin): 79.3 dB</i>
<i>SEL (A): 100.1 dBA</i>	<i>SEL (C): 106.6 dBC</i>	<i>SEL (Lin): 107.4 dB</i>
<i>Peak (A): 98.5 dBA</i>	<i>Peak (C): 104.1 dBC</i>	<i>Peak (Lin): 104.8 dB</i>



Nome misura T.H. (File N. 1) - TH Spectrum - Lineare



Nome: Nome misura T.H. (File N. 2)

Località: Formia

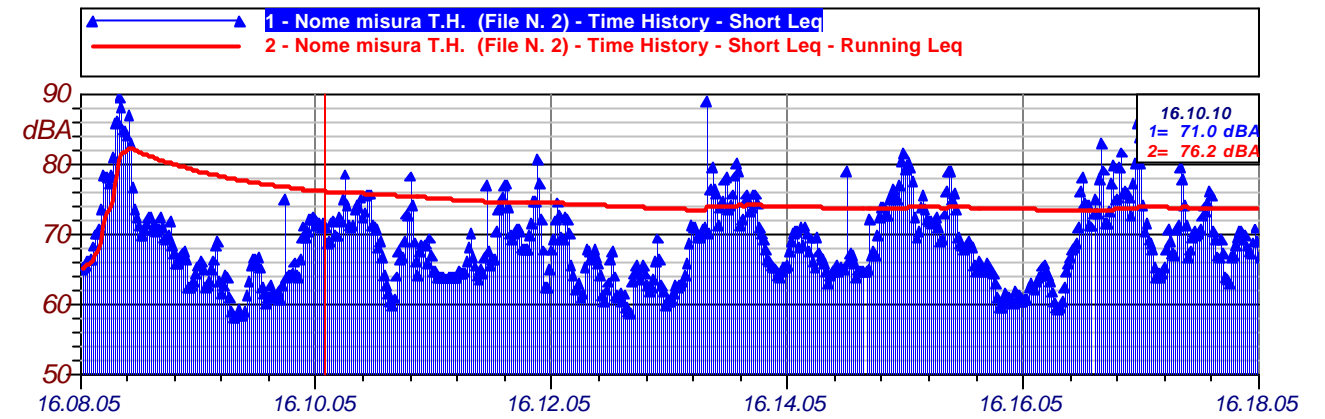
Data: 17/09/2003

Ora: 16.08.05

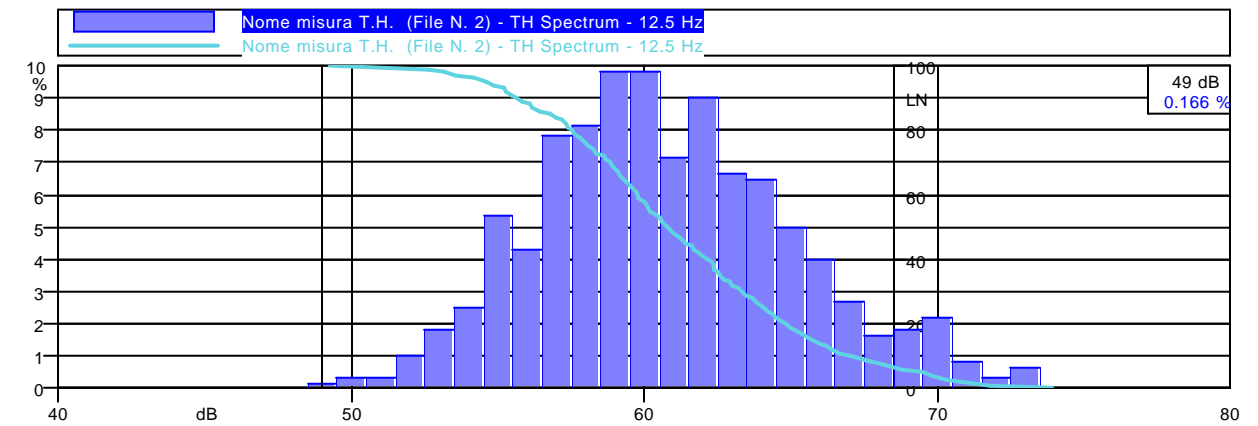
Operatore: Ing. M. Bianchi - Ing. V. Navigari - dott. A. Del Cimmuto

Strumentazione: Larson-Davis 824

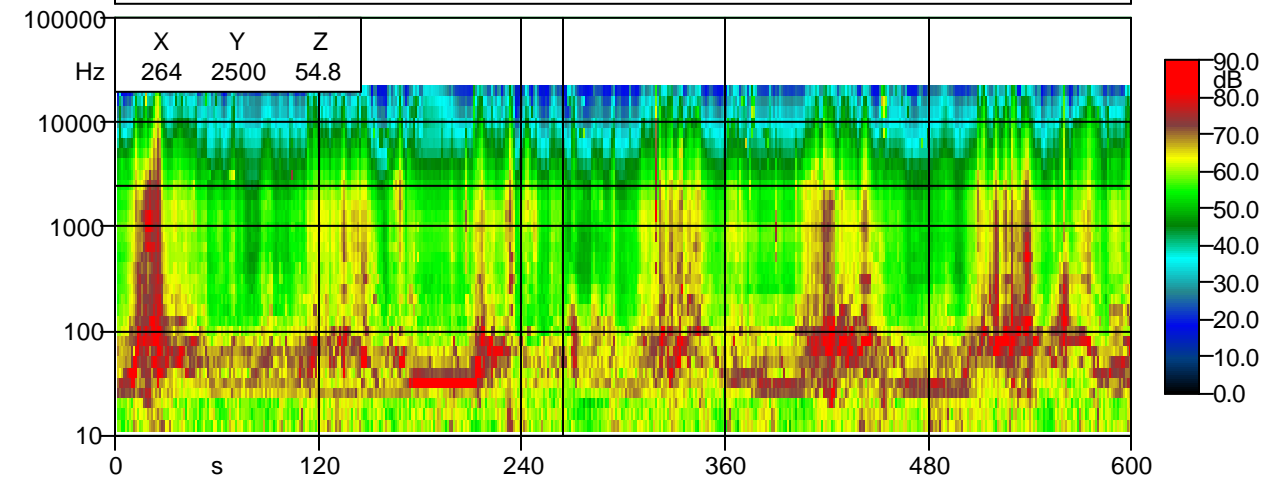
Durata Misura: 601 secondi



<i>Leq (A): 73.7 dBA</i>	<i>Leq (C): 82.4 dBC</i>	<i>Leq (Lin): 83.2 dB</i>
<i>SEL (A): 101.5 dBA</i>	<i>SEL (C): 110.1 dBC</i>	<i>SEL (Lin): 111.0 dB</i>
<i>Peak (A): 108.1 dBA</i>	<i>Peak (C): 107.5 dBC</i>	<i>Peak (Lin): 108.1 dB</i>



Nome misura T.H. (File N. 2) - TH Spectrum - Lineare



Nome: Nome misura T.H. (File N. 3)

Località: Formia

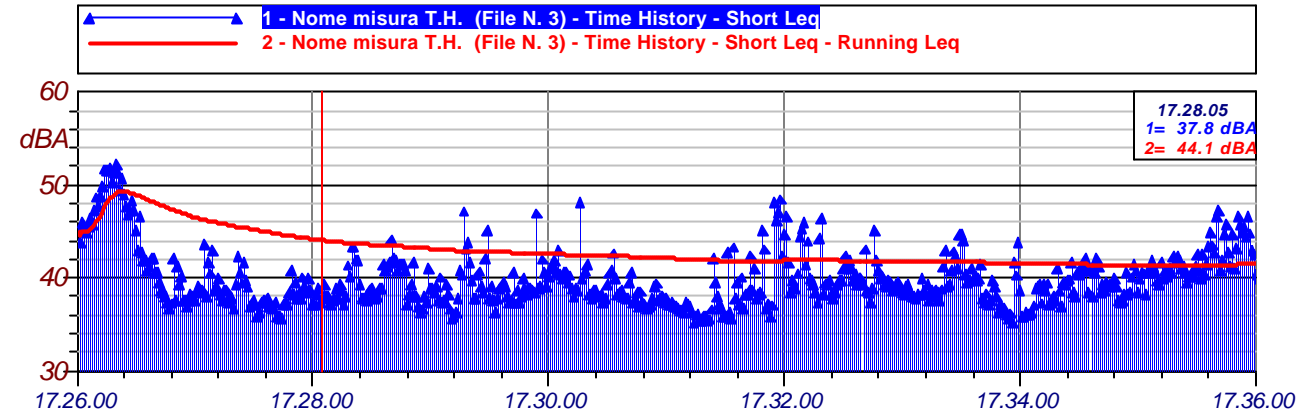
Data: 18/09/2003

Ora: 17.26.00

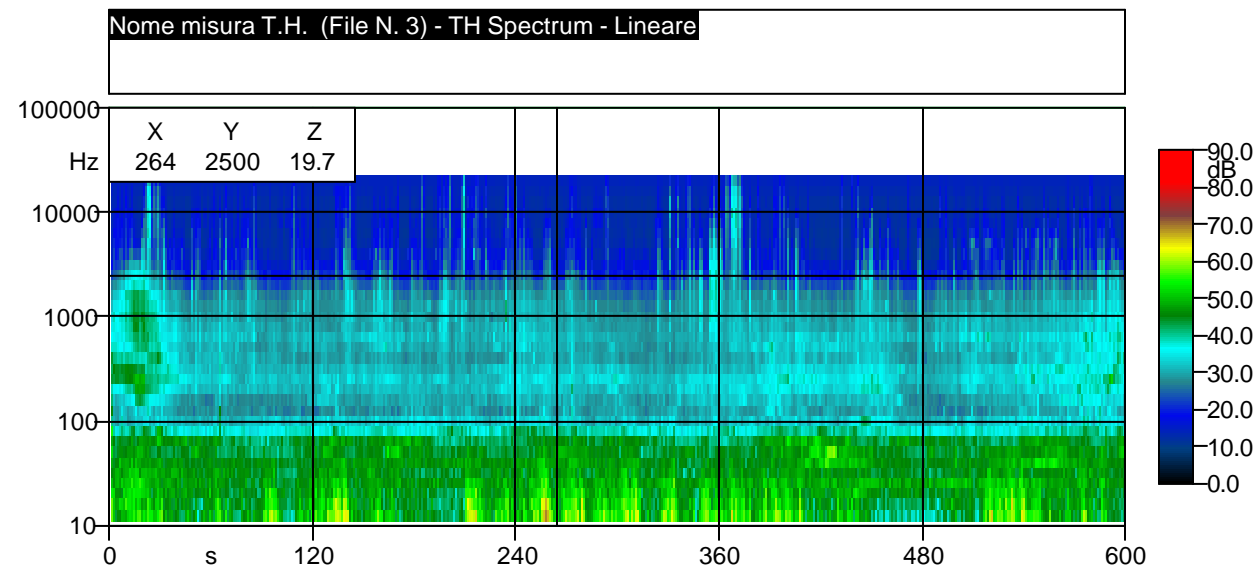
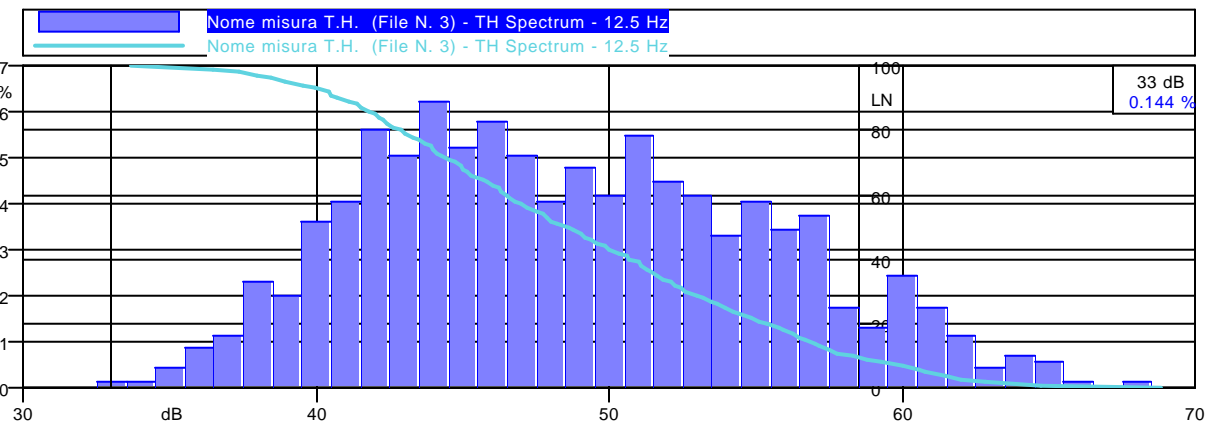
Operatore: Ing. M. Bianchi - Ing. V. Navigari - dott. A. Del Cimmuto

Strumentazione: Larson-Davis 824

Durata Misura: 691 secondi



<i>Leq (A): 41.5 dBA</i>	<i>Leq (C): 55.0 dBC</i>	<i>Leq (Lin): 59.9 dB</i>
<i>SEL (A): 69.9 dBA</i>	<i>SEL (C): 83.4 dBC</i>	<i>SEL (Lin): 88.3 dB</i>
<i>Peak (A): 80.5 dBA</i>	<i>Peak (C): 78.9 dBC</i>	<i>Peak (Lin): 82.2 dB</i>



Nome: Nome misura T.H. (File N. 4)

Località: Formia

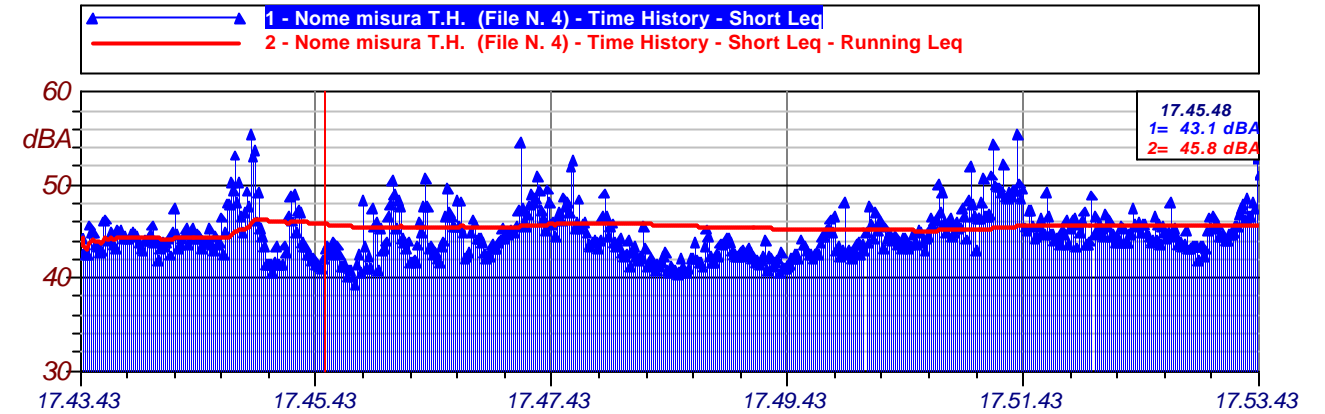
Data: 17/09/2003

Ora: 17.43.43

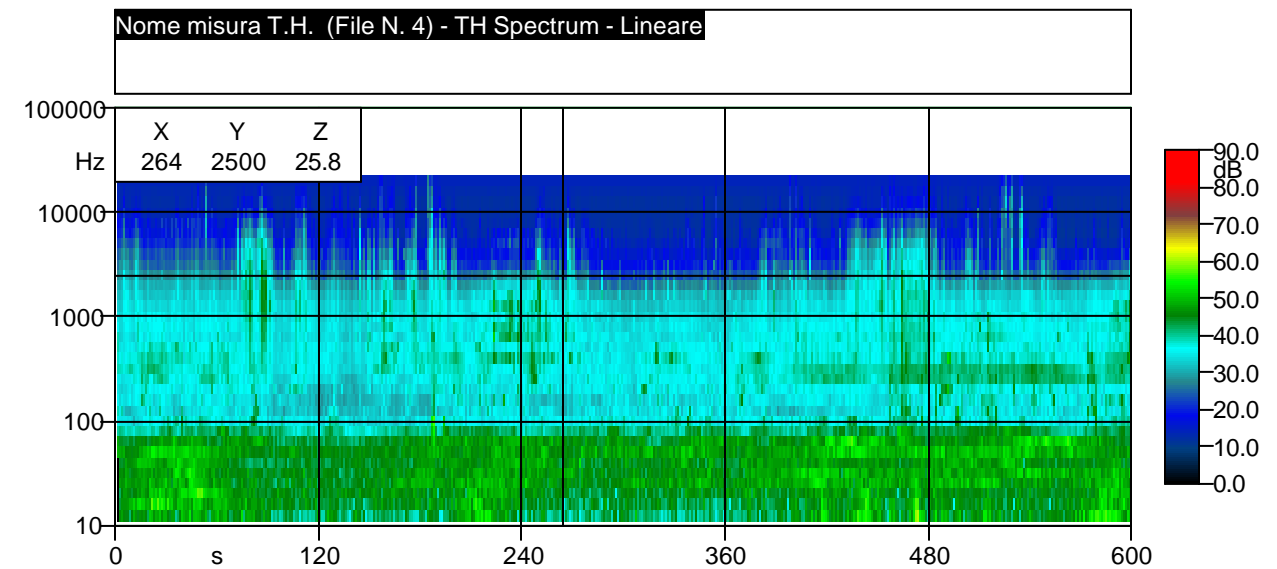
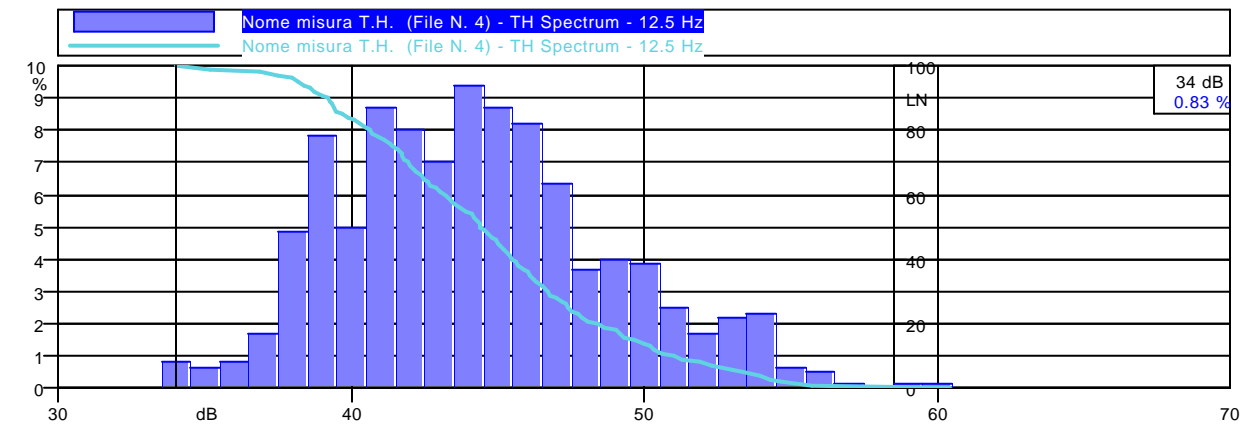
Operatore: Ing. M. Bianchi - Ing. V. Navigari - dott. A. Del Cimmuto

Strumentazione: Larson-Davis 824

Durata Misura: 601 secondi



<i>Leq (A): 45.6 dBA</i>	<i>Leq (C): 54.9 dBC</i>	<i>Leq (Lin): 57.1 dB</i>
<i>SEL (A): 73.4 dBA</i>	<i>SEL (C): 82.7 dBC</i>	<i>SEL (Lin): 84.9 dB</i>
<i>Peak (A): 82.4 dBA</i>	<i>Peak (C): 80.3 dBC</i>	<i>Peak (Lin): 80.8 dB</i>



Nome: Nome misura T.H. (File N. 5)

Località: Formia

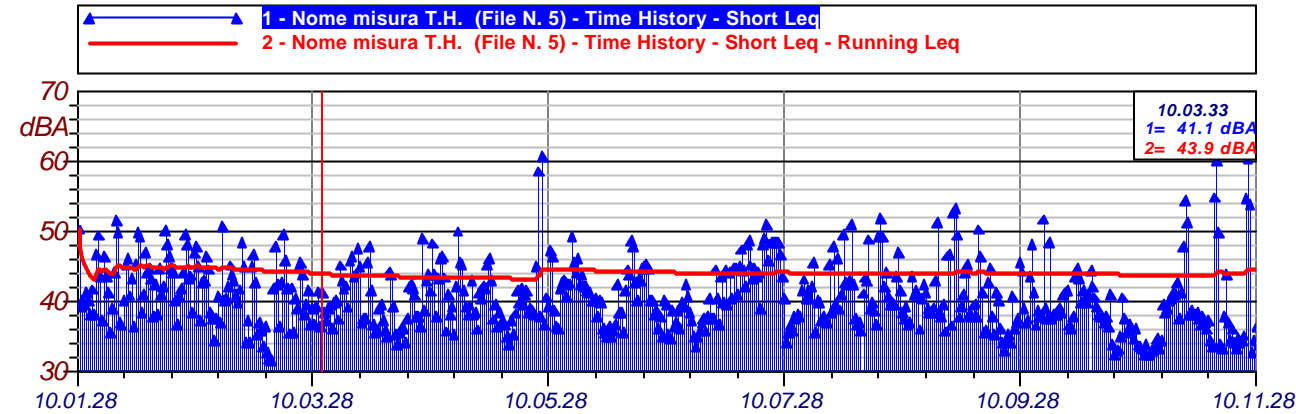
Data: 18/09/2003

Ora: 10.01.28

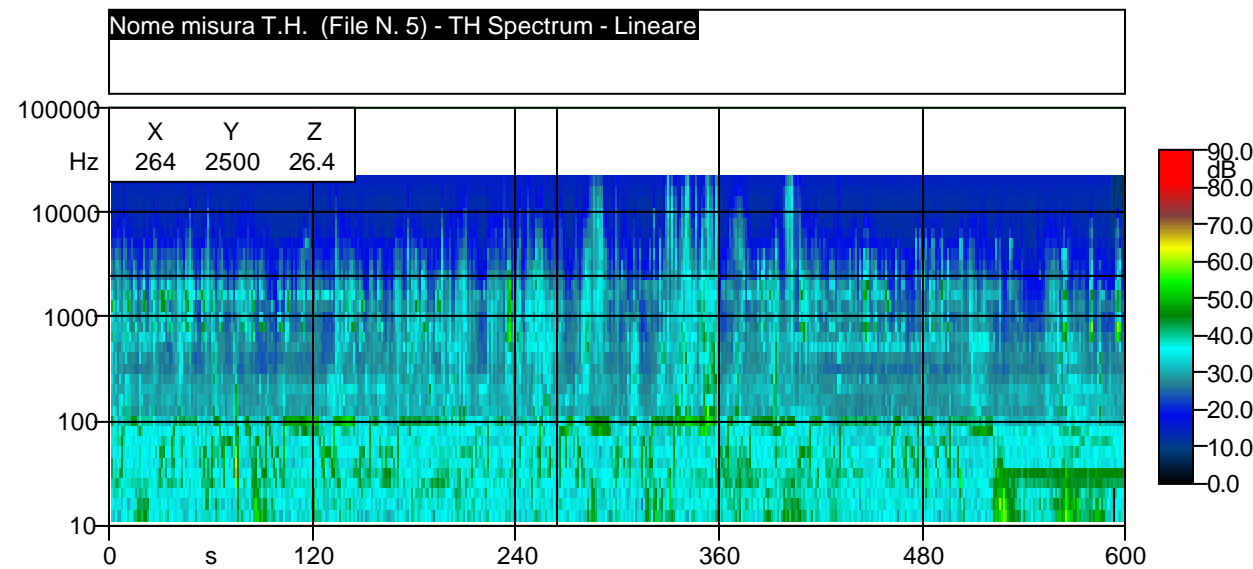
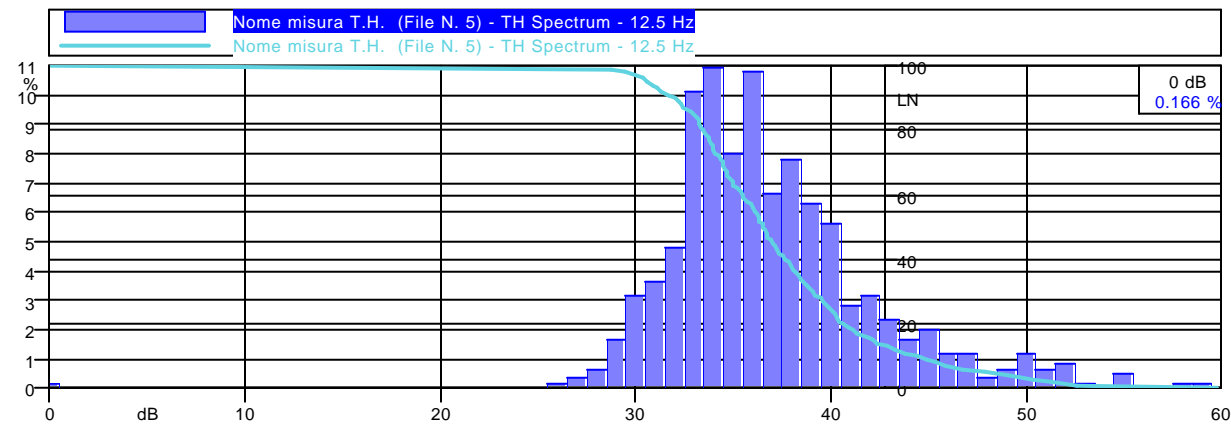
Operatore: Ing. M. Bianchi - Ing. V. Navigari - dott. A. Del Cimmuto

Strumentazione: Larson-Davis 824

Durata Misura: 601 secondi



<i>Leq (A): 44.4 dBA</i>	<i>Leq (C): 50.5 dBC</i>	<i>Leq (Lin): 52.3 dB</i>
<i>SEL (A): 72.2 dBA</i>	<i>SEL (C): 78.3 dBC</i>	<i>SEL (Lin): 80.1 dB</i>
<i>Peak (A): 80.8 dBA</i>	<i>Peak (C): 84.5 dBC</i>	<i>Peak (Lin): 85.7 dB</i>



Nome: Nome misura T.H. (File N. 6)

Località: Formia

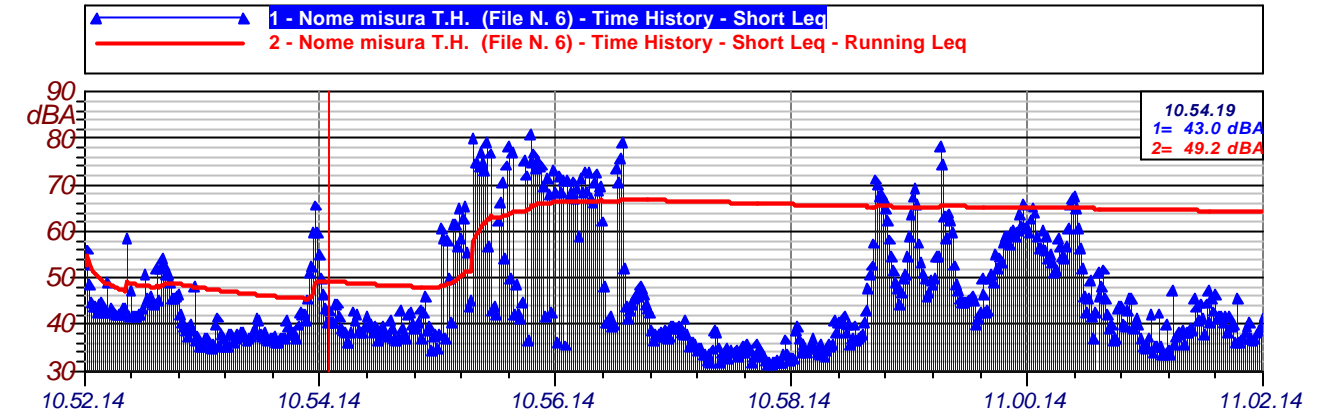
Data: 18/09/2003

Ora: 10.52.14

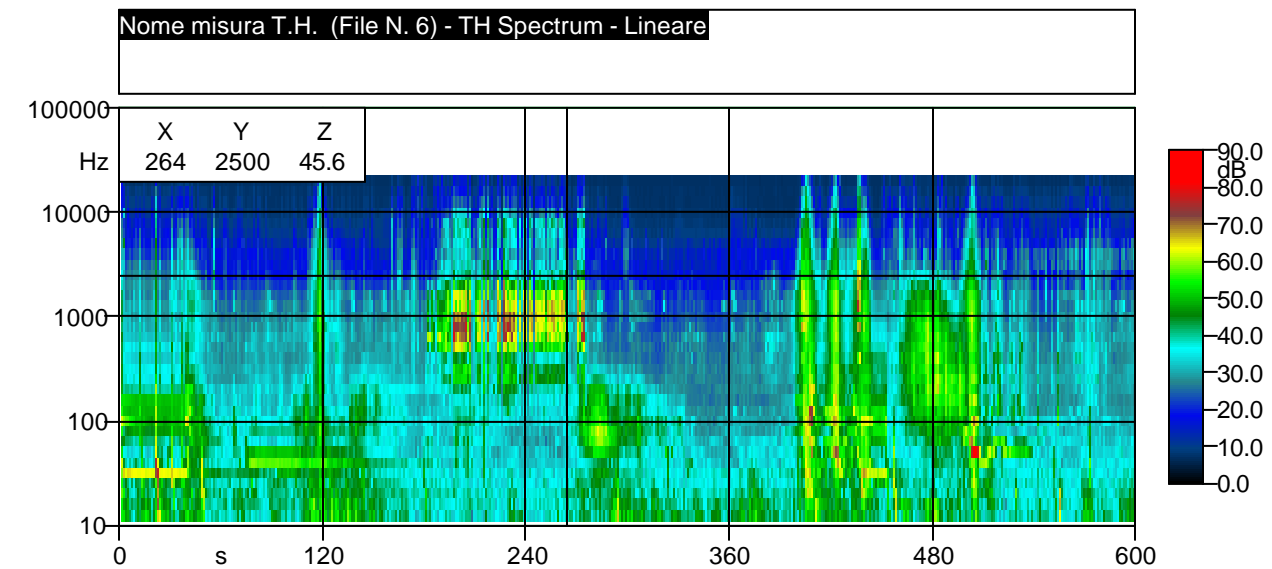
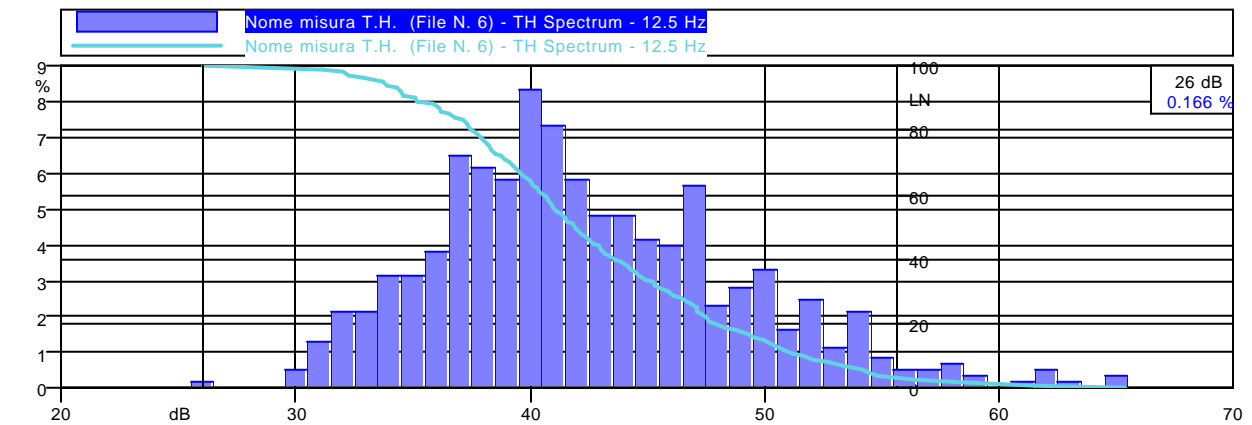
Operatore: Ing. M. Bianchi - Ing. V. Navigari - dott. A. Del Cimmuto

Strumentazione: Larson-Davis 824

Durata Misura: 601 secondi



<i>Leq (A): 64.3 dBA</i>	<i>Leq (C): 66.9 dBC</i>	<i>Leq (Lin): 67.4 dB</i>
<i>SEL (A): 92.1 dBA</i>	<i>SEL (C): 94.7 dBC</i>	<i>SEL (Lin): 95.1 dB</i>
<i>Peak (A): 97.8 dBA</i>	<i>Peak (C): 98.4 dBC</i>	<i>Peak (Lin): 98.4 dB</i>



Nome: Nome misura T.H. (File N. 7)

Località: Formia

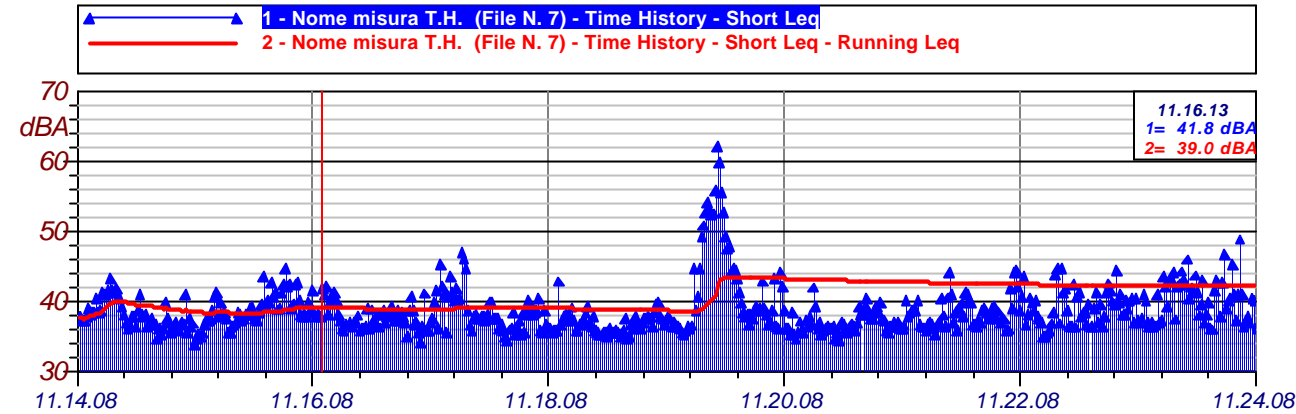
Data: 18/09/2003

Ora: 11.14.08

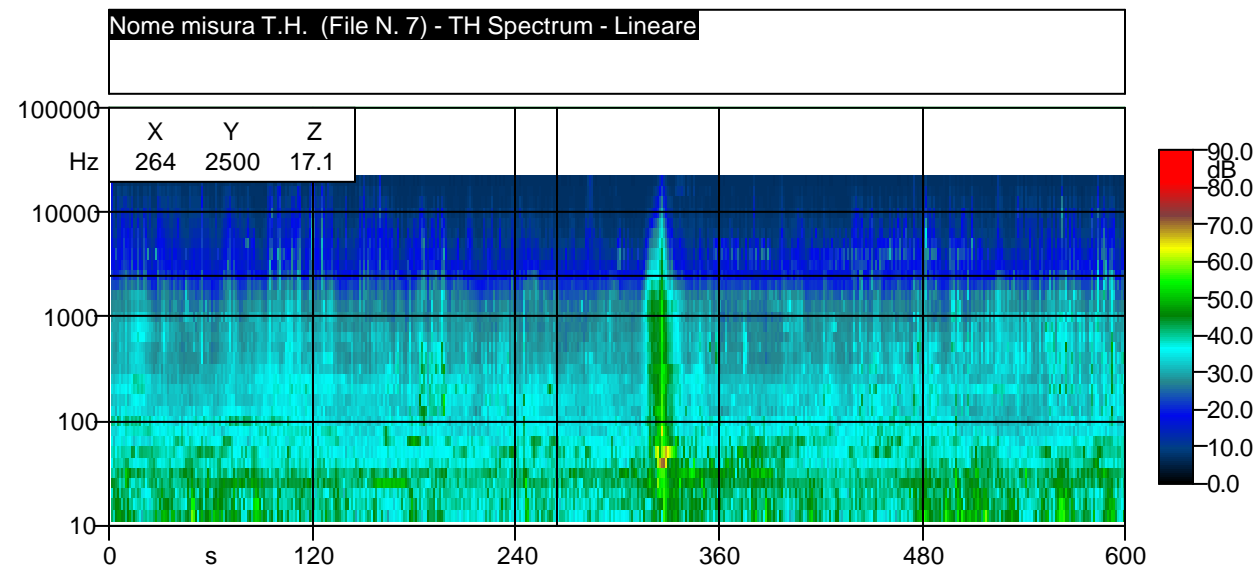
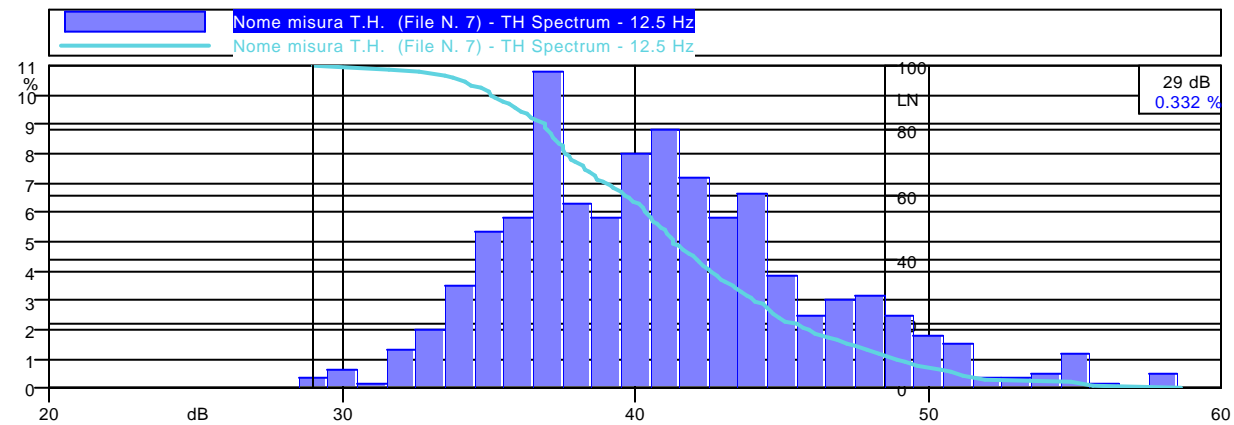
Operatore: Ing. M. Bianchi - Ing. V. Navigari - dott. A. Del Cimmuto

Strumentazione: Larson-Davis 824

Durata Misura: 601 secondi



<i>Leq (A): 42.1 dBA</i>	<i>Leq (C): 52.8 dBC</i>	<i>Leq (Lin): 55.1 dB</i>
<i>SEL (A): 69.9 dBA</i>	<i>SEL (C): 80.5 dBC</i>	<i>SEL (Lin): 82.9 dB</i>
<i>Peak (A): 79.3 dBA</i>	<i>Peak (C): 84.4 dBC</i>	<i>Peak (Lin): 86.0 dB</i>



Nome: Nome misura T.H. (File N. 8)

Località: Formia

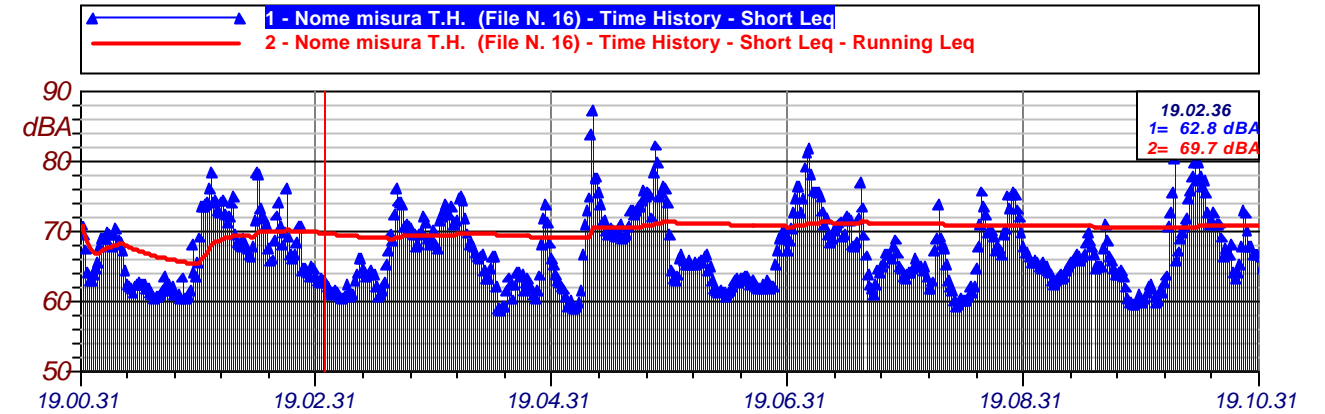
Data: 18/09/2003

Ora: 12.22.15

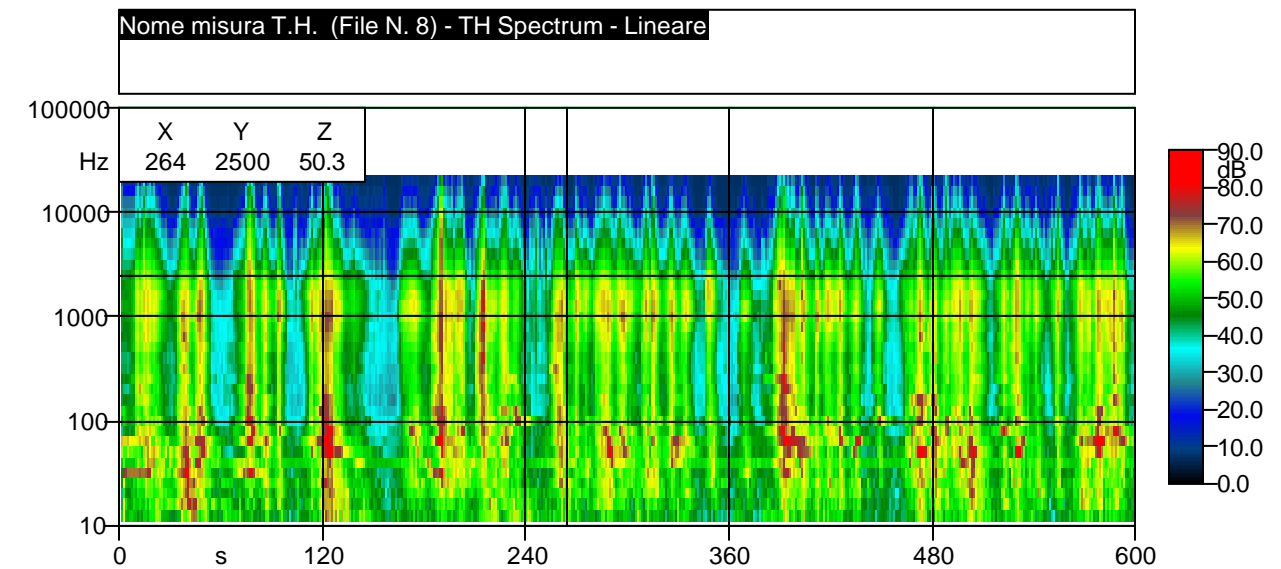
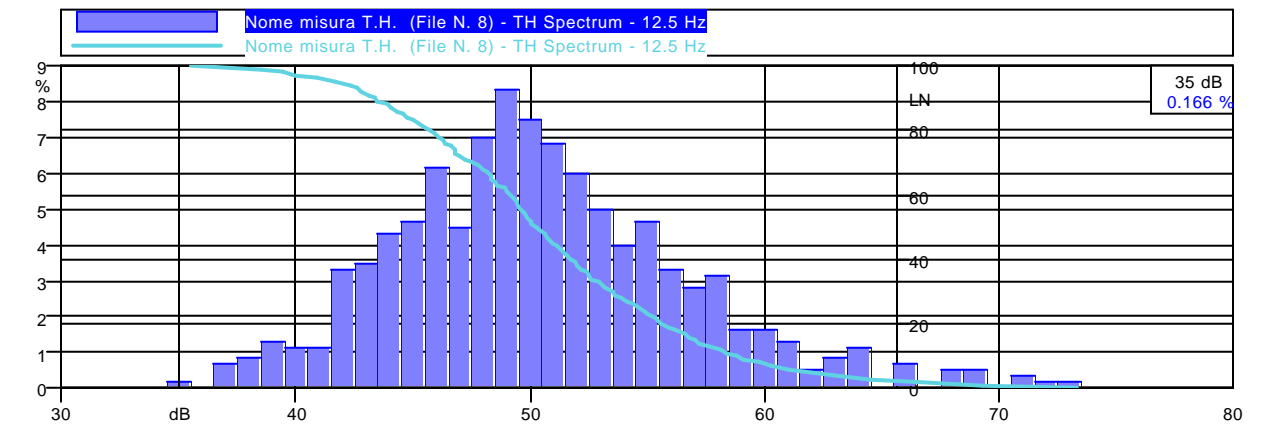
Operatore: Ing. M. Bianchi - Ing. V. Navigari - dott. A. Del Cimmuto

Strumentazione: Larson-Davis 824

Durata Misura: 601 secondi



<i>Leq (A): 70.8 dBA</i>	<i>Leq (C): 79.7 dBC</i>	<i>Leq (Lin): 80.6 dB</i>
<i>SEL (A): 98.6 dBA</i>	<i>SEL (C): 107.5 dBC</i>	<i>SEL (Lin): 108.4 dB</i>
<i>Peak (A): 99.9 dBA</i>	<i>Peak (C): 103.6 dBC</i>	<i>Peak (Lin): 103.9 dB</i>



Nome: Nome misura T.H. (File N. 9)

Località: Formia

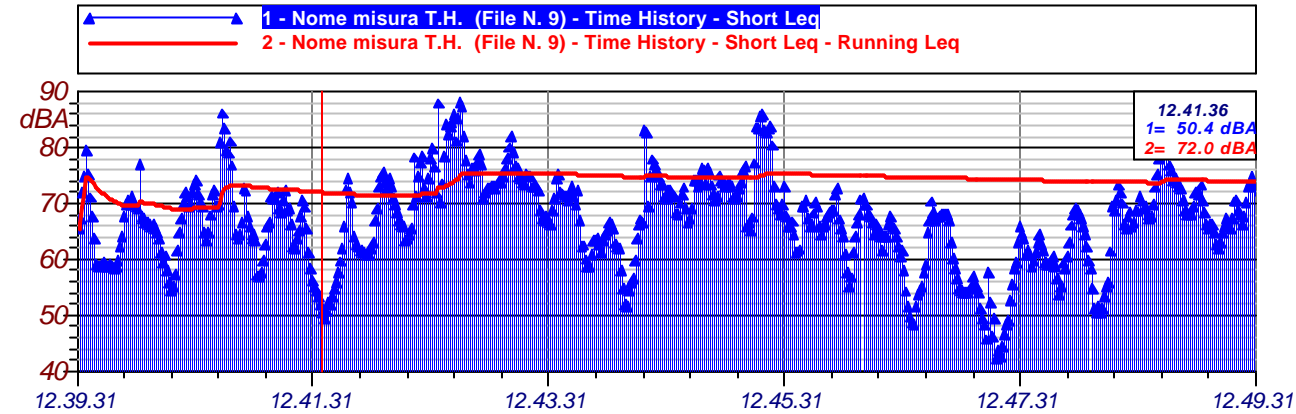
Data: 18/09/2003

Ora: 12.39.31

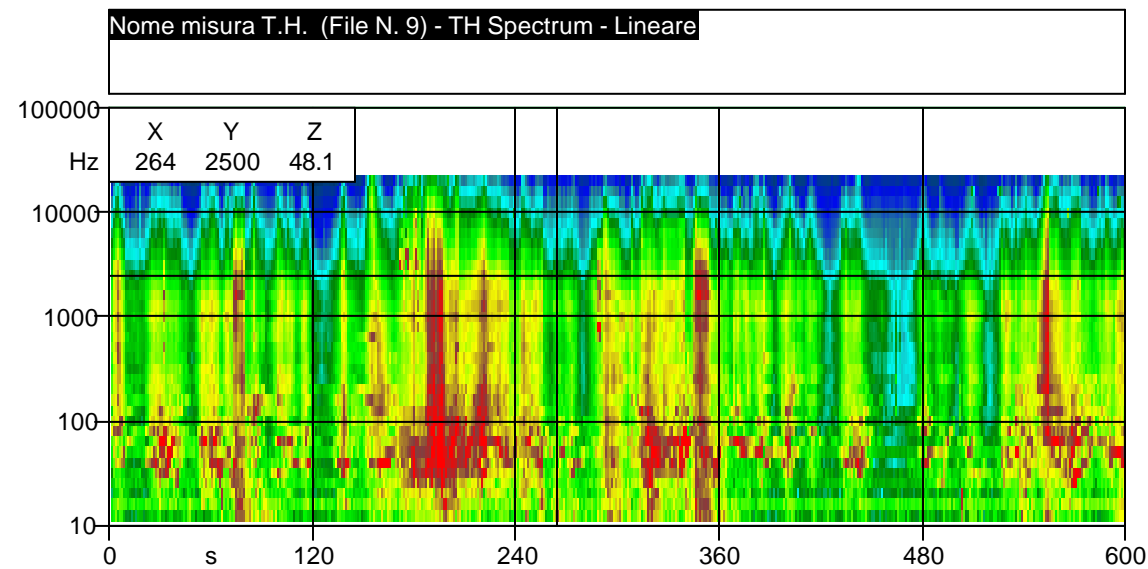
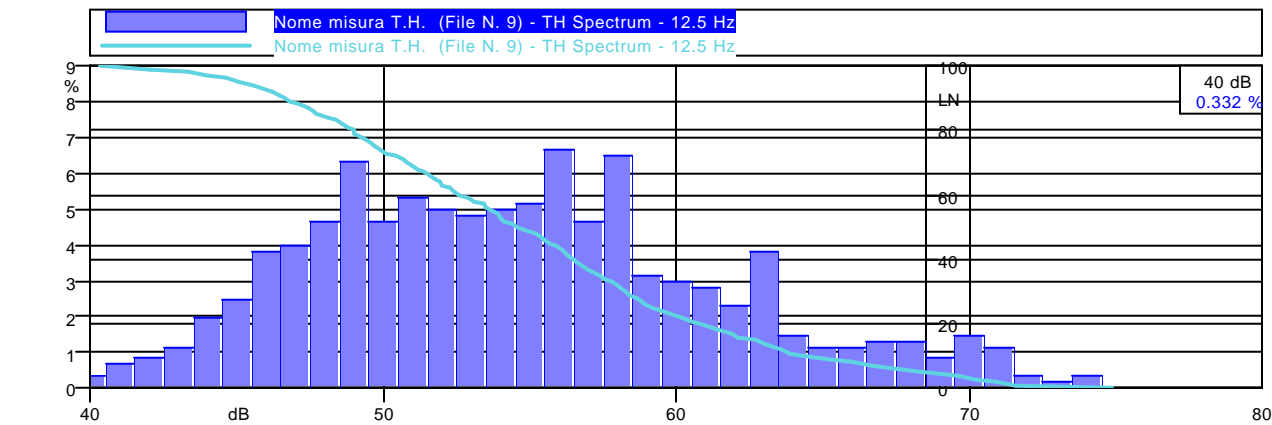
Operatore: Ing. M. Bianchi - Ing. V. Navigari - dott. A. Del Cimmuto

Strumentazione: Larson-Davis 824

Durata Misura: 602 secondi



<i>Leq (A): 74.0 dBA</i>	<i>Leq (C): 80.4 dBC</i>	<i>Leq (Lin): 81.1 dB</i>
<i>SEL (A): 101.8 dBA</i>	<i>SEL (C): 108.2 dBC</i>	<i>SEL (Lin): 108.9 dB</i>
<i>Peak (A): 102.8 dBA</i>	<i>Peak (C): 107.3 dBC</i>	<i>Peak (Lin): 107.2 dB</i>



Nome: Nome misura T.H. (File N. 10)

Località: Formia

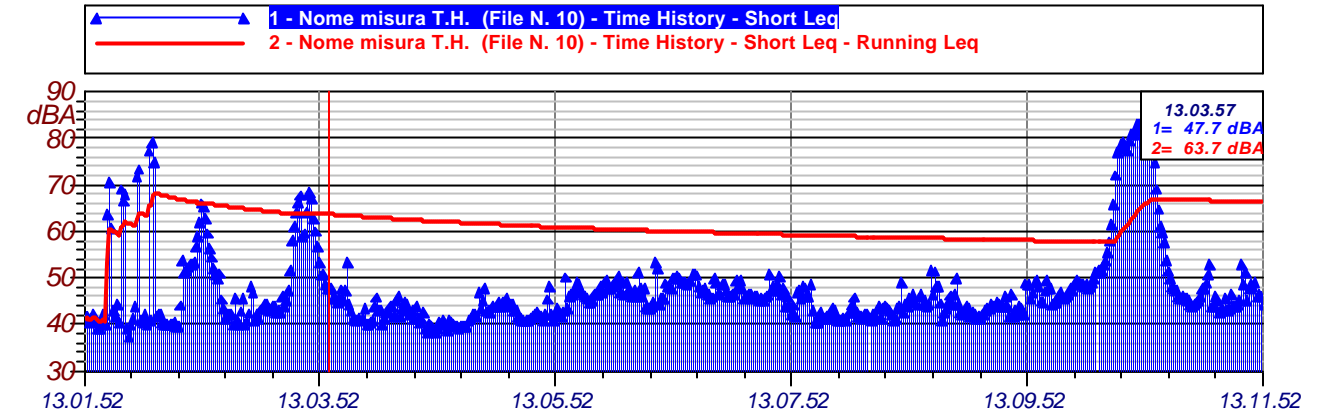
Data: 18/09/2003

Ora: 13.01.52

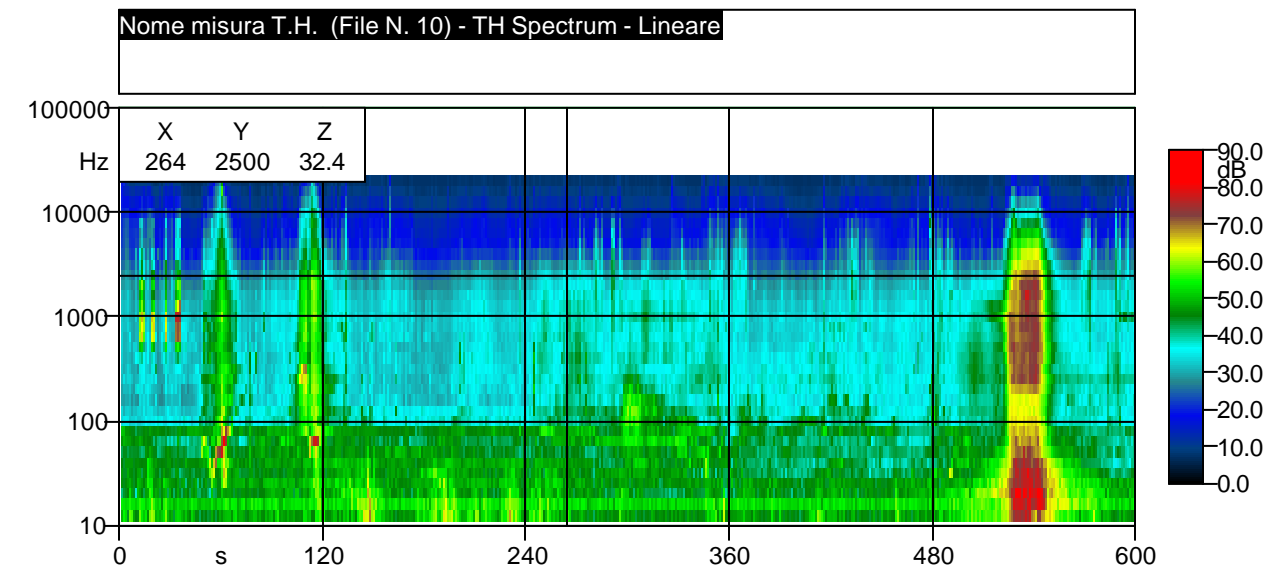
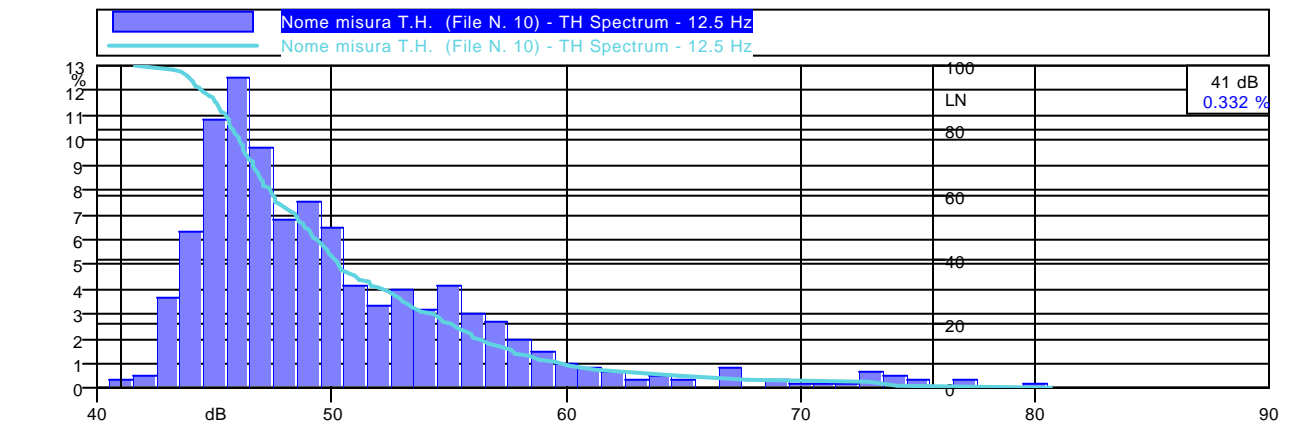
Operatore: Ing. M. Bianchi - Ing. V. Navigari - dott. A. Del Cimmuto

Strumentazione: Larson-Davis 824

Durata Misura: 601 secondi



<i>Leq (A): 66.4 dBA</i>	<i>Leq (C): 70.3 dBC</i>	<i>Leq (Lin): 71.9 dB</i>
<i>SEL (A): 94.2 dBA</i>	<i>SEL (C): 98.1 dBC</i>	<i>SEL (Lin): 99.7 dB</i>
<i>Peak (A): 97.9 dBA</i>	<i>Peak (C): 98.9 dBC</i>	<i>Peak (Lin): 99.9 dB</i>



Nome: Nome misura T.H. (File N. 11)

Località: Formia

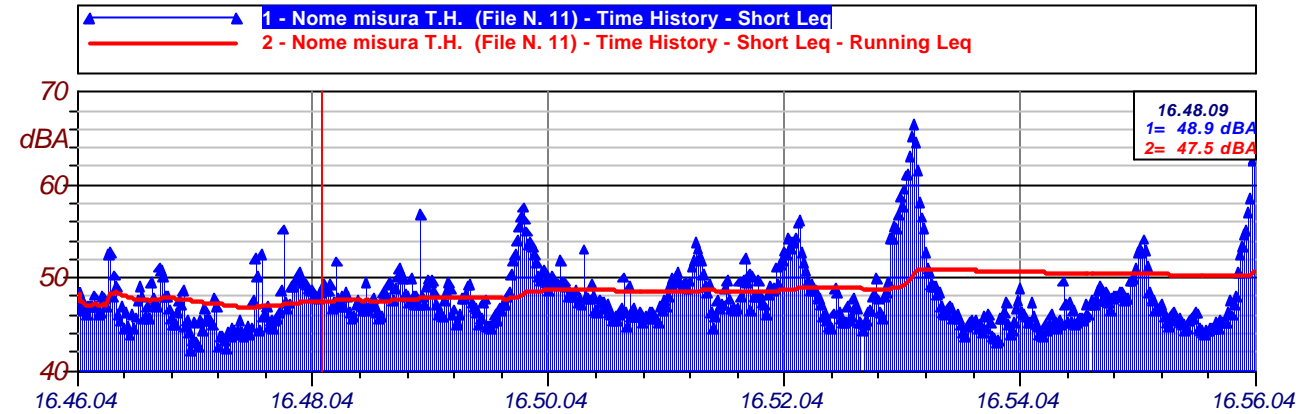
Data: 18/09/2003

Ora: 16.46.04

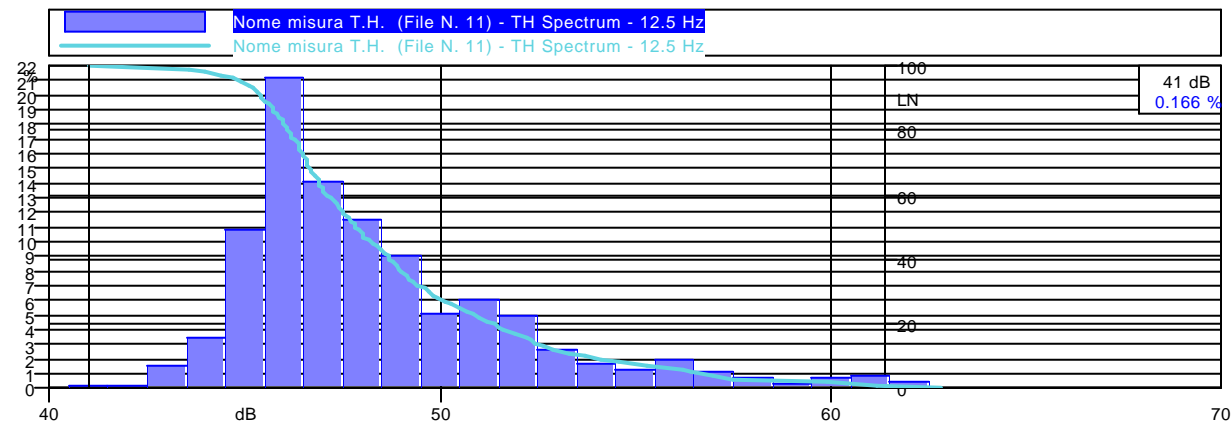
Operatore: Ing. M. Bianchi - Ing. V. Navigari - dott. A. Del Cimmuto

Strumentazione: Larson-Davis 824

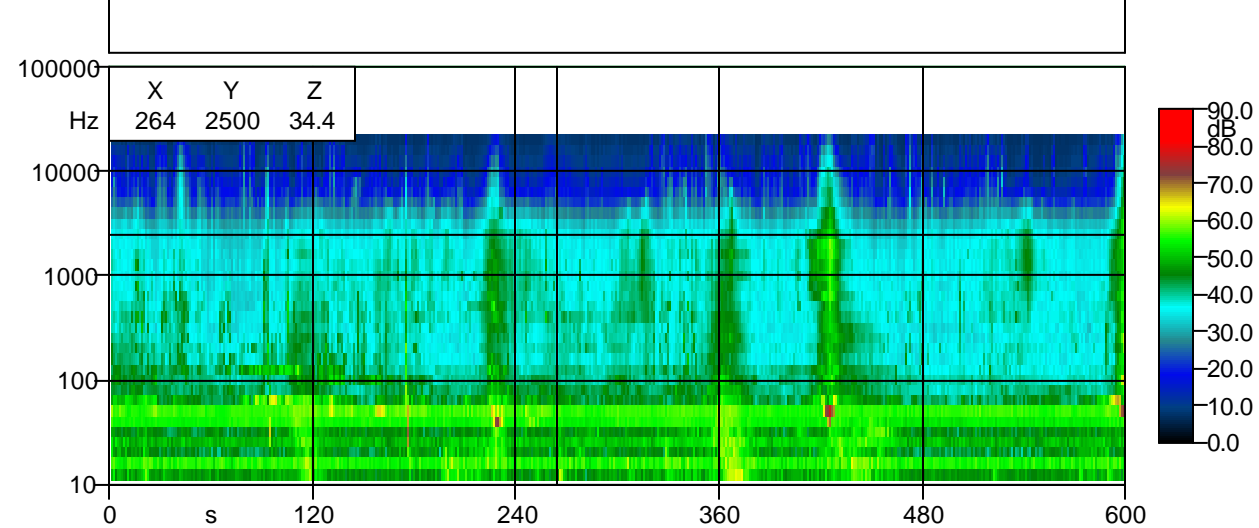
Durata Misura: 601 secondi



<i>Leq (A): 50.9 dBA</i>	<i>Leq (C): 62.0 dBC</i>	<i>Leq (Lin): 63.6 dB</i>
<i>SEL (A): 78.7 dBA</i>	<i>SEL (C): 89.8 dBC</i>	<i>SEL (Lin): 91.4 dB</i>
<i>Peak (A): 80.5 dBA</i>	<i>Peak (C): 89.6 dBC</i>	<i>Peak (Lin): 90.7 dB</i>



Nome misura T.H. (File N. 11) - TH Spectrum - Lineare



Nome: Nome misura T.H. (File N. 12)

Località: Formia

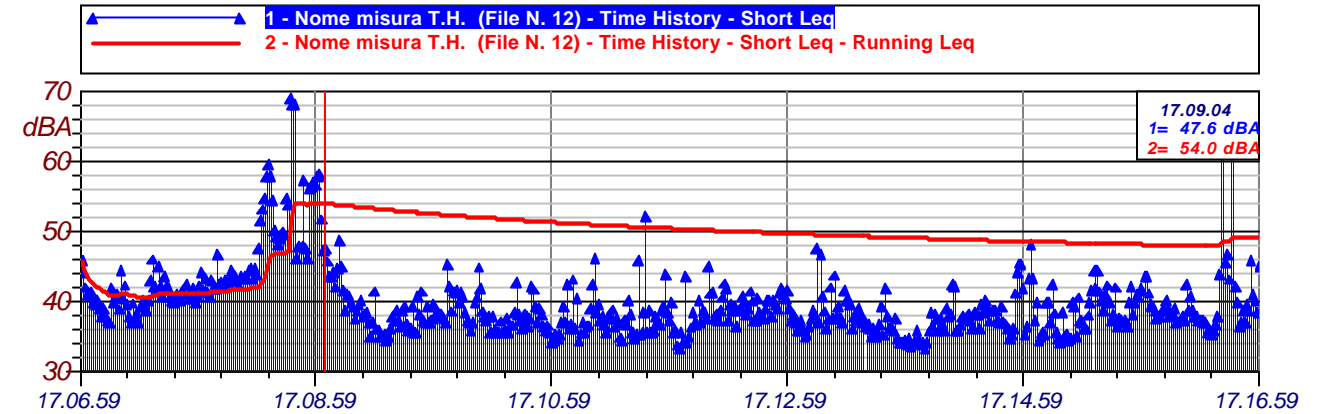
Data: 18/09/2003

Ora: 17.06.59

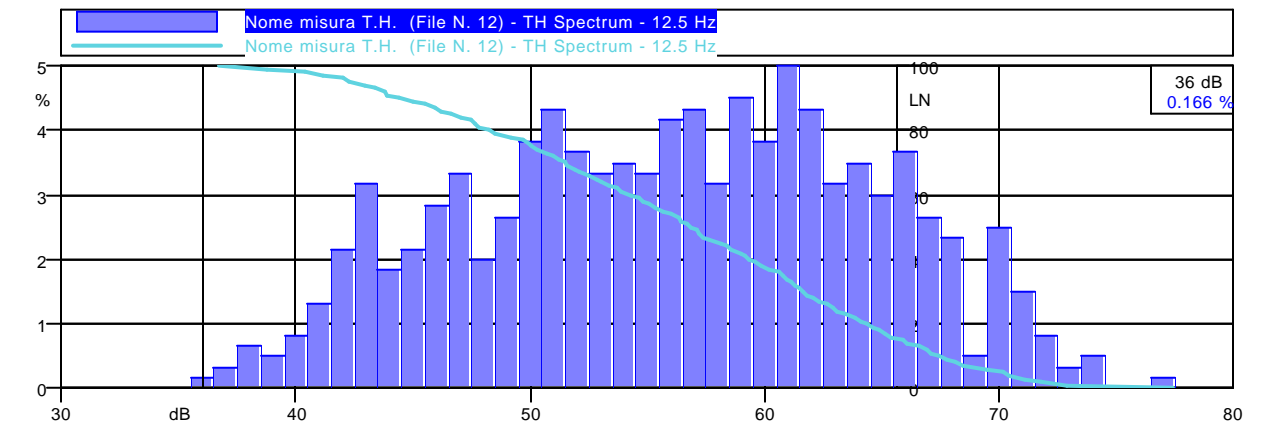
Operatore: Ing. M. Bianchi - Ing. V. Navigari - dott. A. Del Cimmuto

Strumentazione: Larson-Davis 824

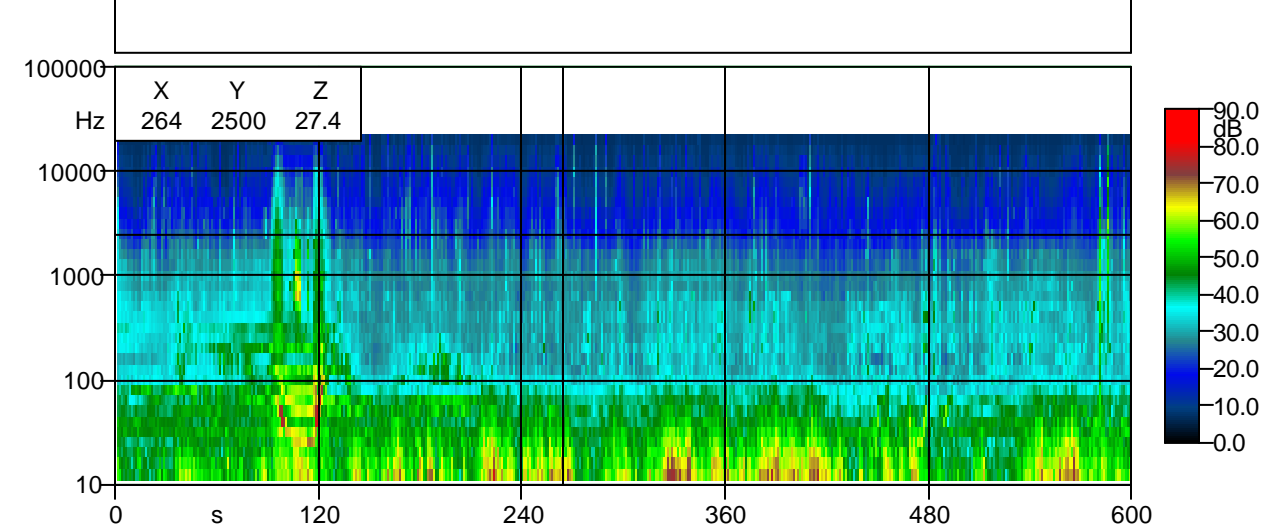
Durata Misura: 601 secondi



<i>Leq (A): 49.1 dBA</i>	<i>Leq (C): 63.4 dBC</i>	<i>Leq (Lin): 69.3 dB</i>
<i>SEL (A): 76.9 dBA</i>	<i>SEL (C): 91.2 dBC</i>	<i>SEL (Lin): 97.1 dB</i>
<i>Peak (A): 87.7 dBA</i>	<i>Peak (C): 89.1 dBC</i>	<i>Peak (Lin): 93.1 dB</i>



Nome misura T.H. (File N. 12) - TH Spectrum - Lineare



Nome: Nome misura T.H. (File N. 13)

Località: Formia

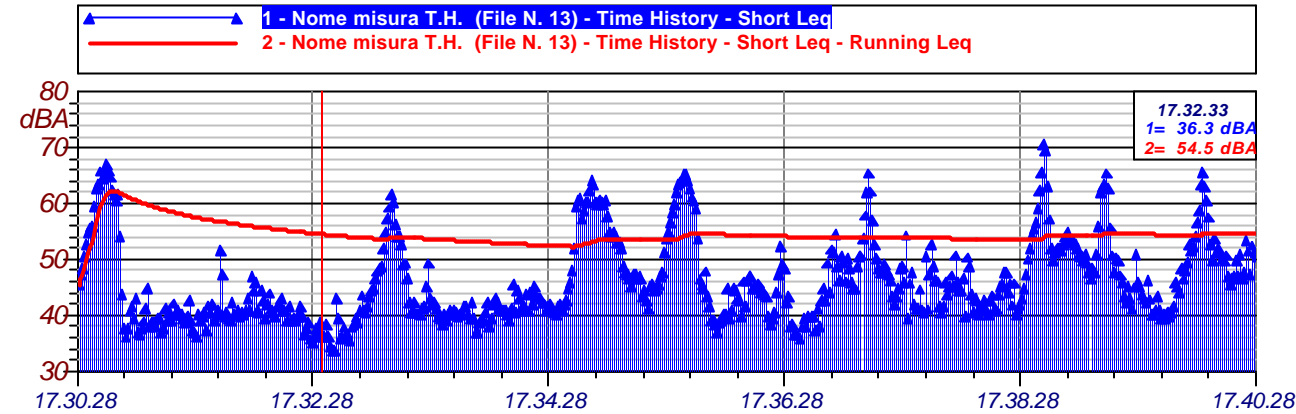
Data: 18/09/2003

Ora: 17.30.28

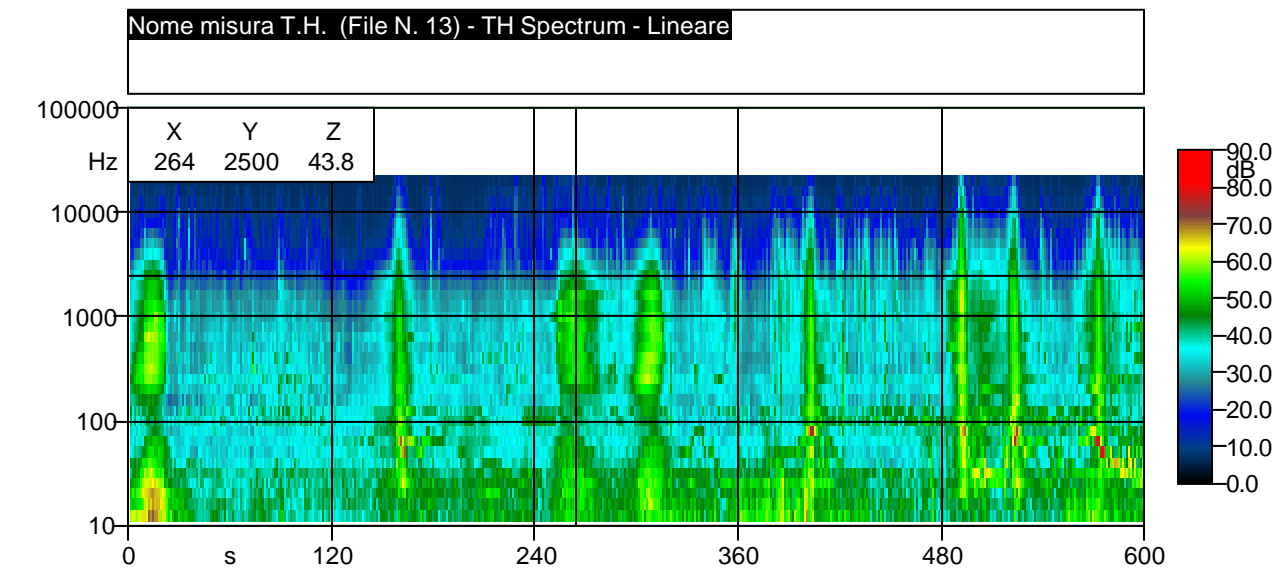
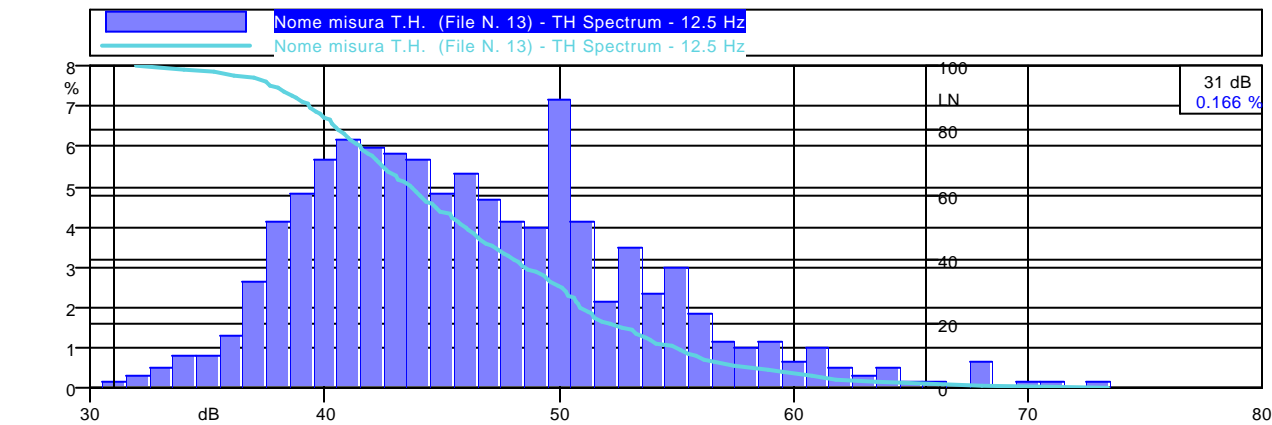
Operatore: Ing. M. Bianchi - Ing. V. Navigari - dott. A. Del Cimmuto

Strumentazione: Larson-Davis 824

Durata Misura: 601 secondi



<i>Leq (A): 54.4 dBA</i>	<i>Leq (C): 62.8 dBC</i>	<i>Leq (Lin): 64.1 dB</i>
<i>SEL (A): 82.2 dBA</i>	<i>SEL (C): 90.5 dBC</i>	<i>SEL (Lin): 91.9 dB</i>
<i>Peak (A): 85.0 dBA</i>	<i>Peak (C): 90.5 dBC</i>	<i>Peak (Lin): 91.5 dB</i>



Nome: Nome misura T.H. (File N. 14)

Località: Formia

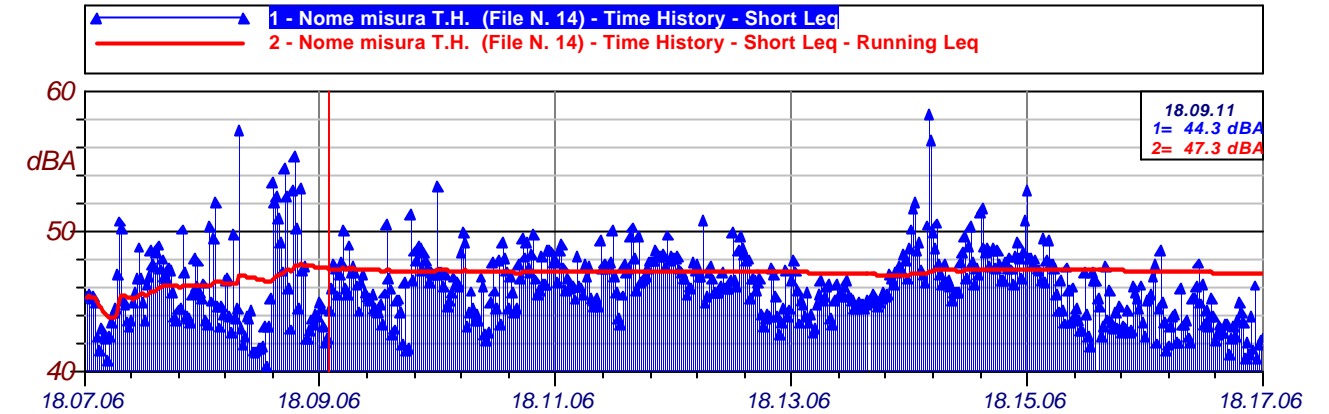
Data: 18/09/2003

Ora: 18.07.06

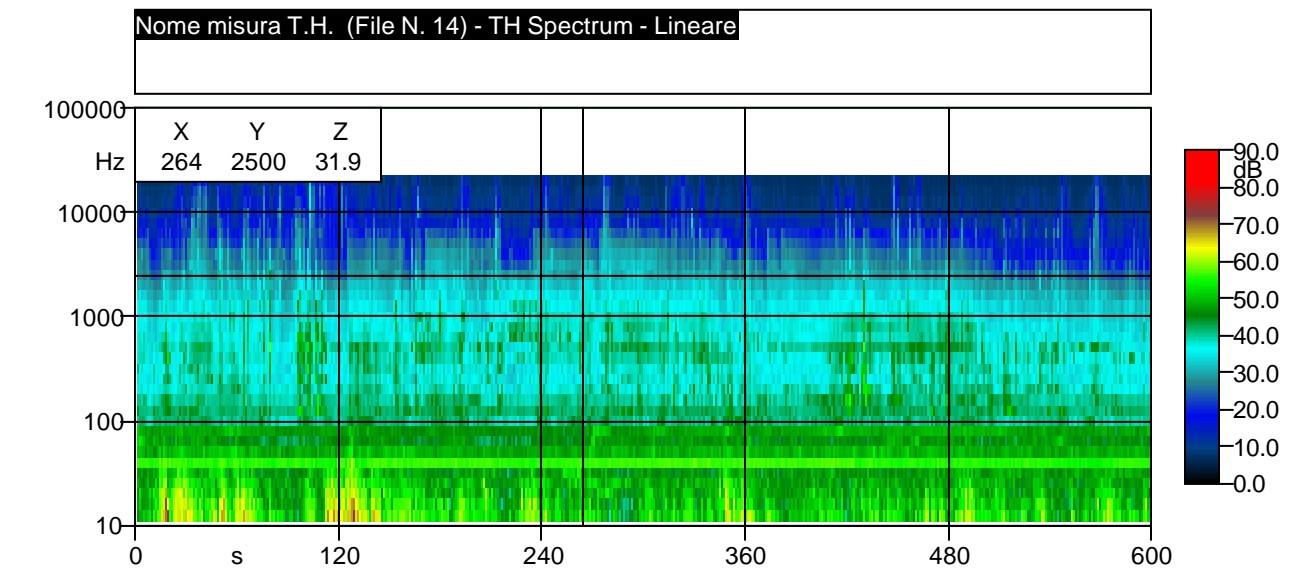
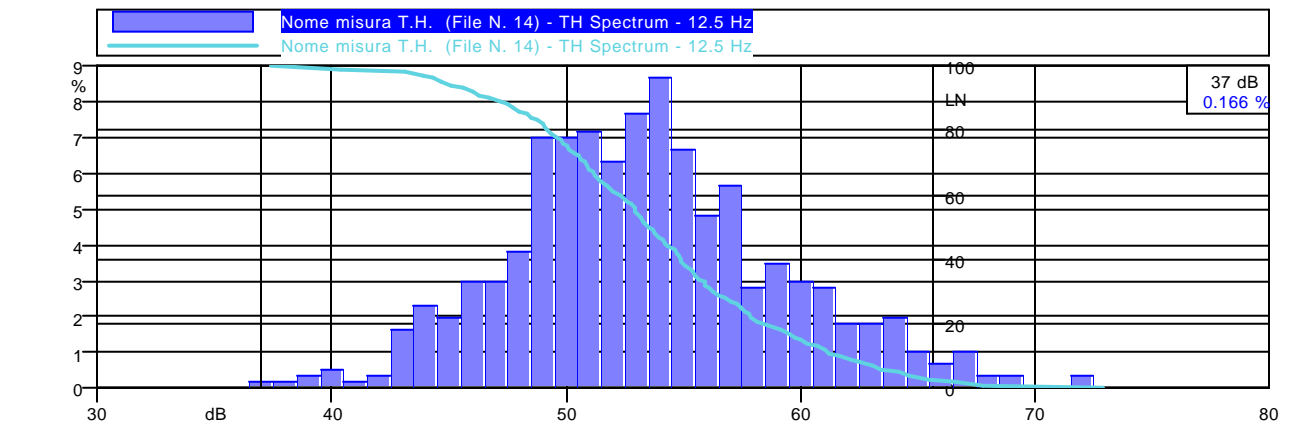
Operatore: Ing. M. Bianchi - Ing. V. Navigari - dott. A. Del Cimmuto

Strumentazione: Larson-Davis 824

Durata Misura: 601 secondi



<i>Leq (A): 46.9 dBA</i>	<i>Leq (C): 59.4 dBC</i>	<i>Leq (Lin): 63.7 dB</i>
<i>SEL (A): 74.7 dBA</i>	<i>SEL (C): 87.2 dBC</i>	<i>SEL (Lin): 91.5 dB</i>
<i>Peak (A): 83.7 dBA</i>	<i>Peak (C): 84.1 dBC</i>	<i>Peak (Lin): 90.9 dB</i>



Nome: Nome misura T.H. (File N. 15)

Località: Formia

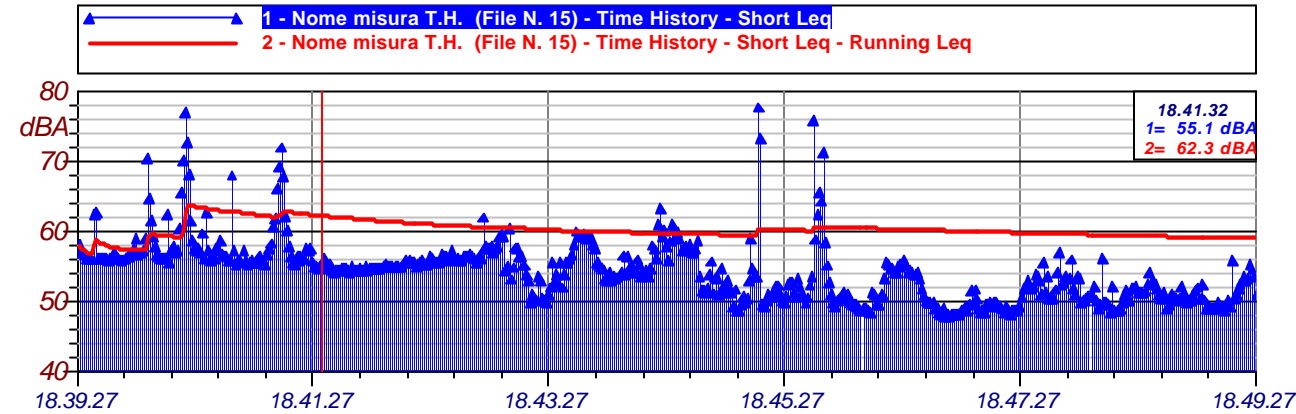
Data: 18/09/2003

Ora: 18.39.27

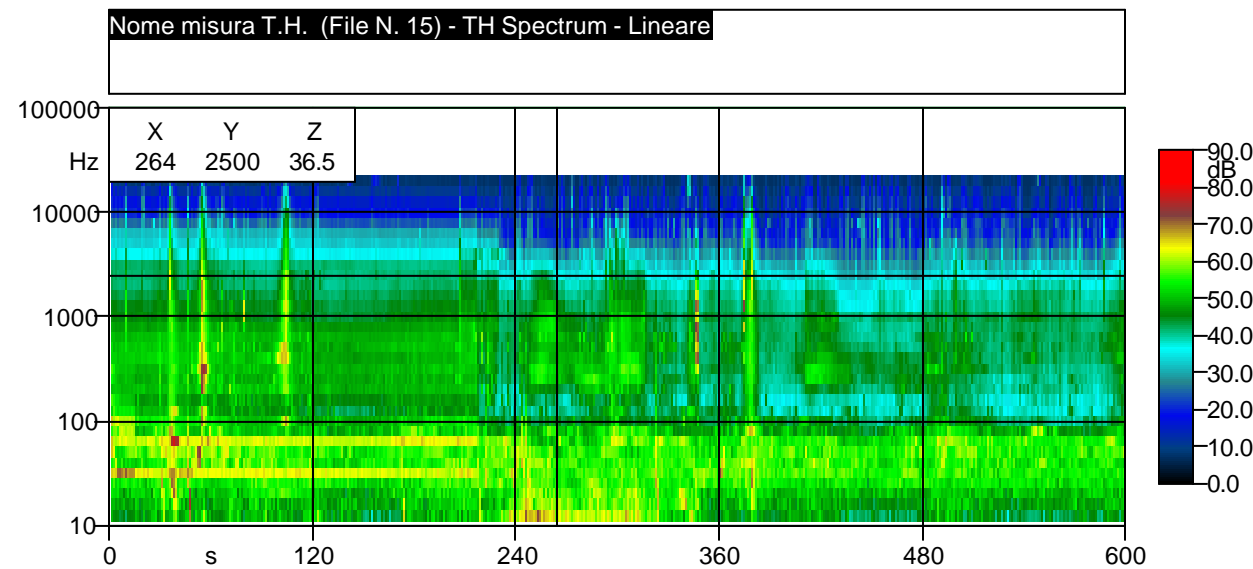
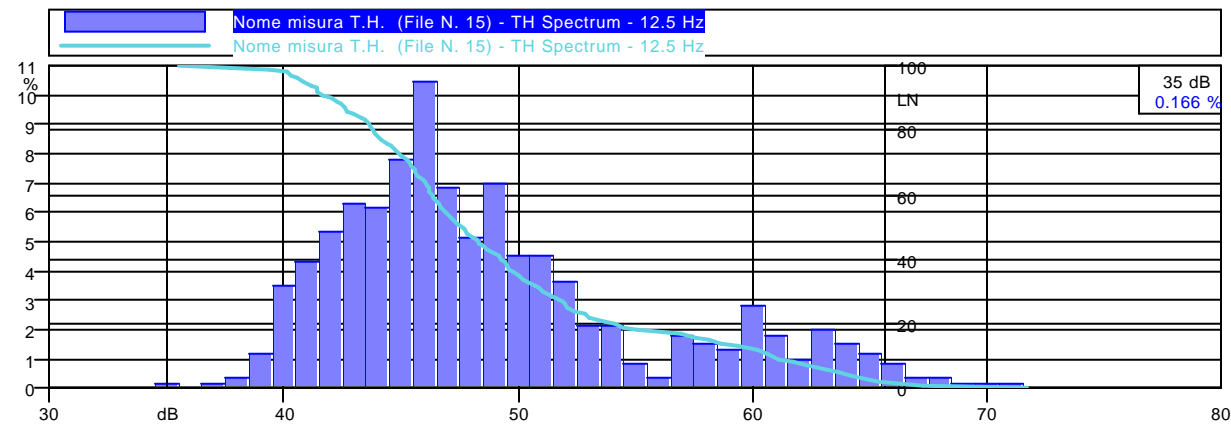
Operatore: Ing. M. Bianchi - Ing. V. Navigari - dott. A. Del Cimmuto

Strumentazione: Larson-Davis 824

Durata Misura: 601 secondi



<i>Leq (A): 59.0 dBA</i>	<i>Leq (C): 66.4 dBC</i>	<i>Leq (Lin): 67.7 dB</i>
<i>SEL (A): 86.8 dBA</i>	<i>SEL (C): 94.2 dBC</i>	<i>SEL (Lin): 95.5 dB</i>
<i>Peak (A): 97.8 dBA</i>	<i>Peak (C): 97.6 dBC</i>	<i>Peak (Lin): 97.6 dB</i>



Nome: Nome misura T.H. (File N. 16)

Località: Formia

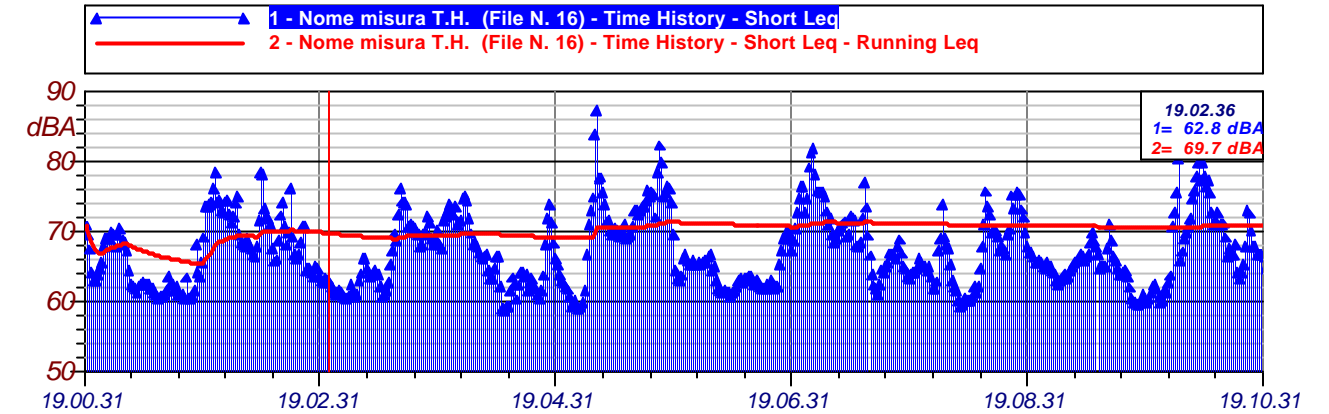
Data: 18/09/2003

Ora: 19.00.31

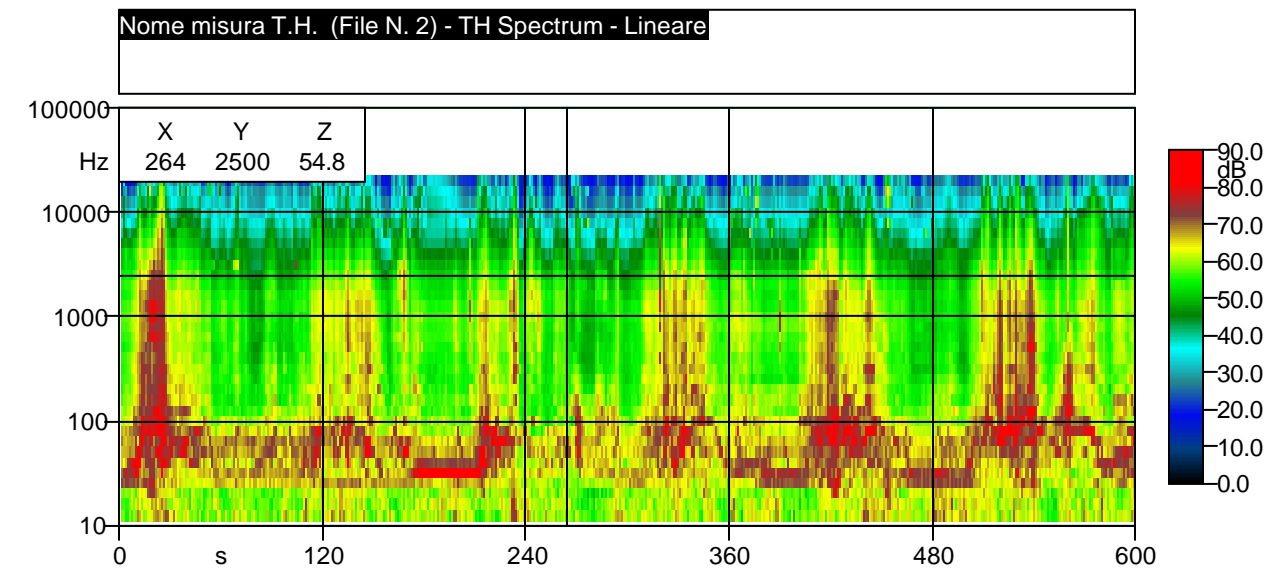
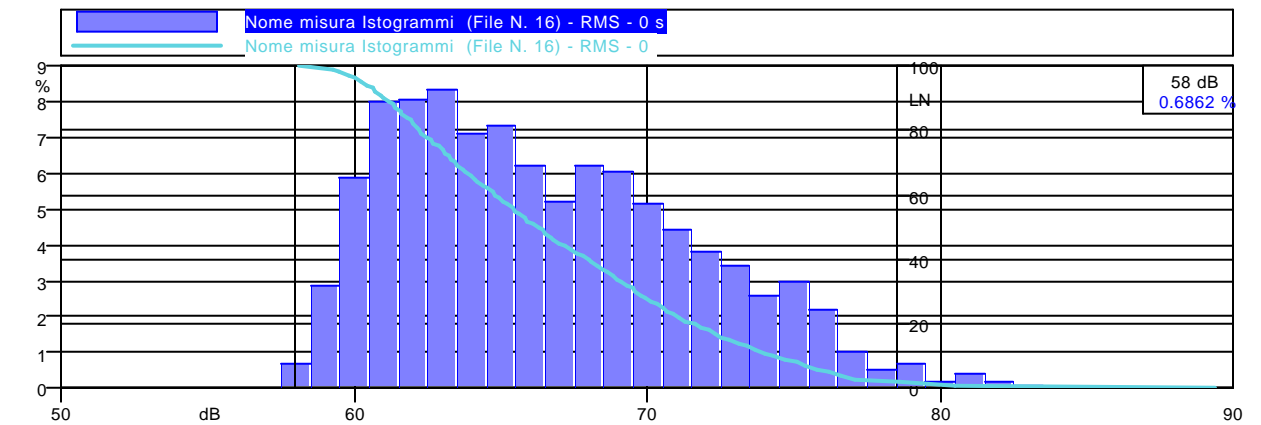
Operatore: Ing. M. Bianchi - Ing. V. Navigari - dott. A. Del Cimmuto

Strumentazione: Larson-Davis 824

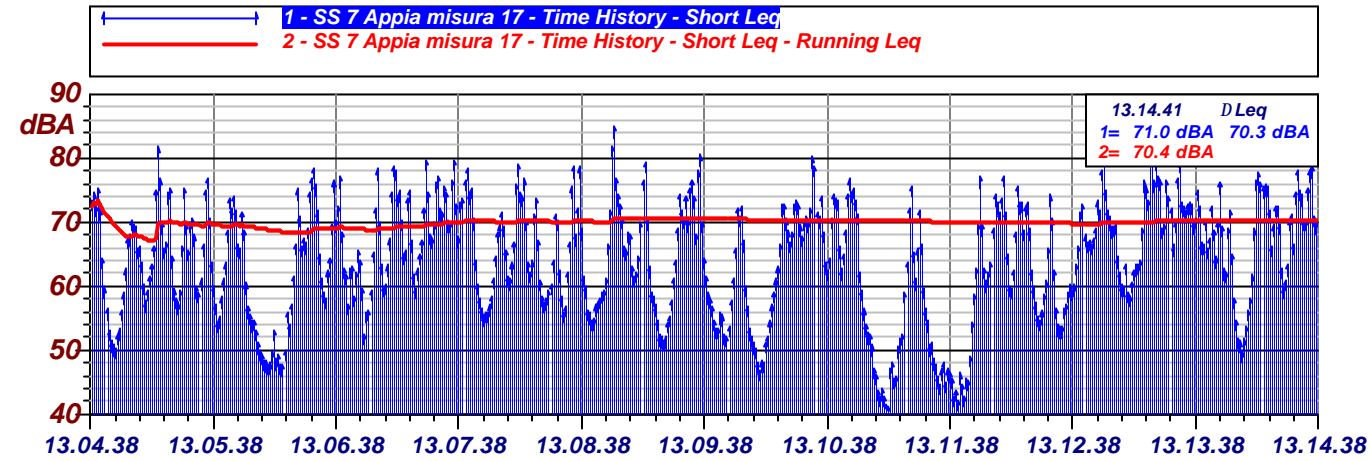
Durata Misura: 601 secondi



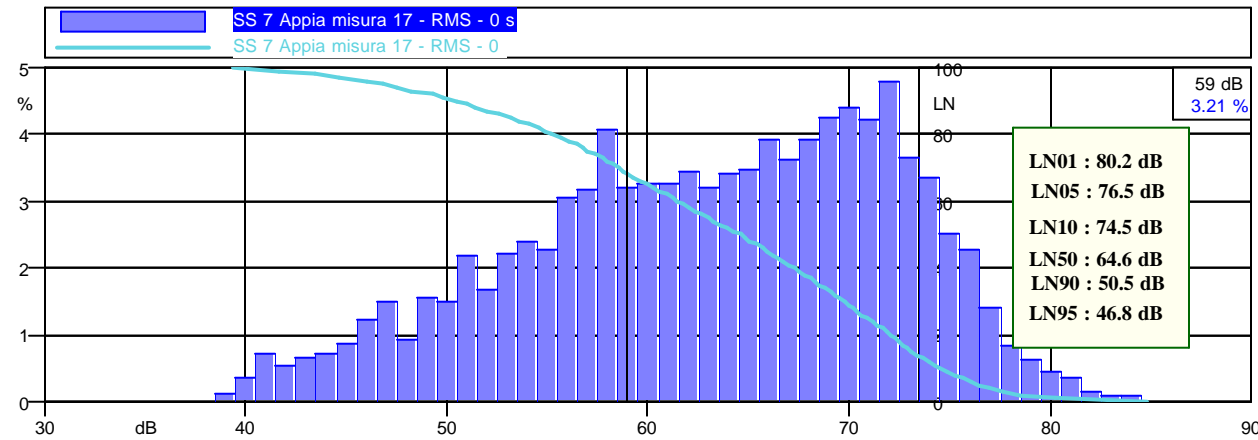
<i>Leq (A): 70.8 dBA</i>	<i>Leq (C): 79.7 dBC</i>	<i>Leq (Lin): 80.6 dB</i>
<i>SEL (A): 98.6 dBA</i>	<i>SEL (C): 107.5 dBC</i>	<i>SEL (Lin): 108.4 dB</i>
<i>Peak (A): 99.9 dBA</i>	<i>Peak (C): 103.6 dBC</i>	<i>Peak (Lin): 103.9 dB</i>



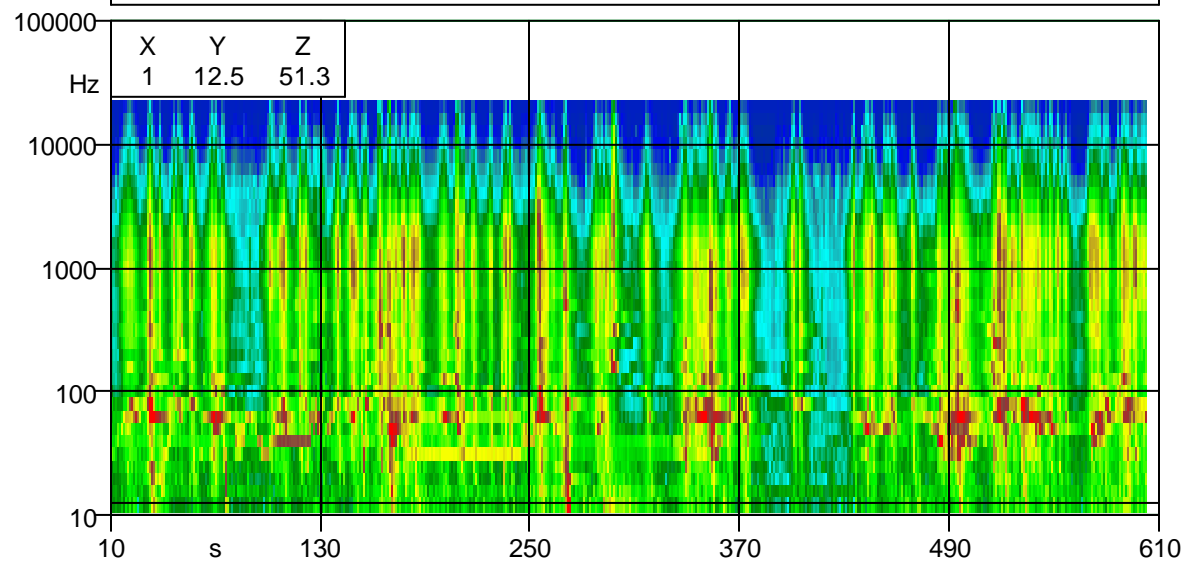
Nome: SS 7 Appia misura 17
 Operatore: Ing.M.Bianchi, Ing.V.Navigari, Dott.A.Del Cimmuto
 Strumentazione: Larson-Davis 824 Durata Misura: 604 secondi



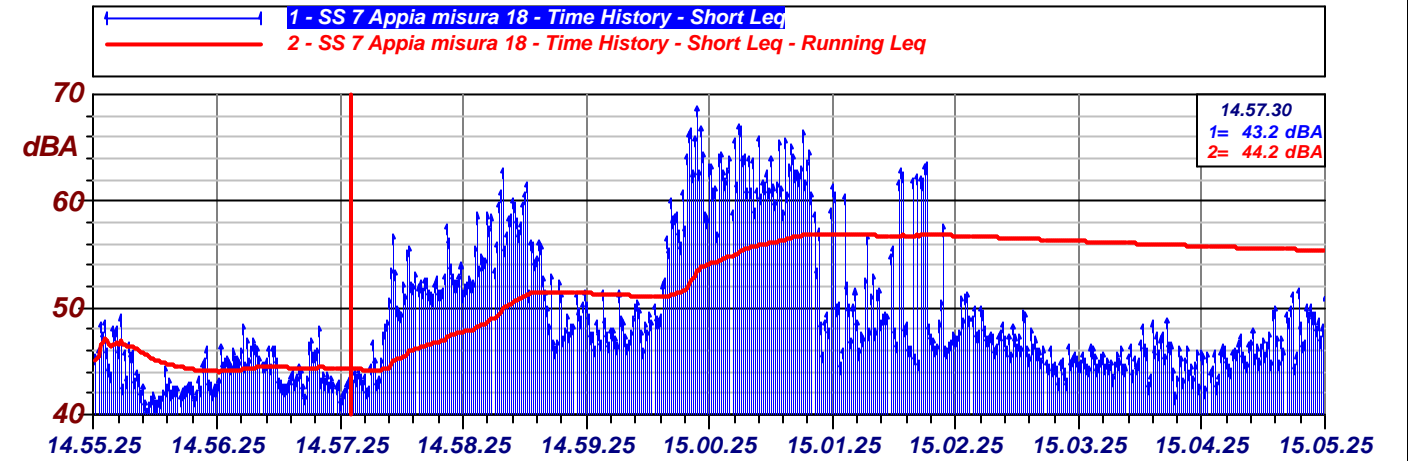
Leq (A): 70.4 dBA	Leq (C): 75.9 dBC	Leq (Lin): 76.5 dB
SEL (A): 98.2 dBA	SEL (C): 103.7 dBC	SEL (Lin): 104.3 dB
Peak (A): 97.0 dBA	Peak (C): 99.3 dBC	Peak (Lin): 99.6 dB



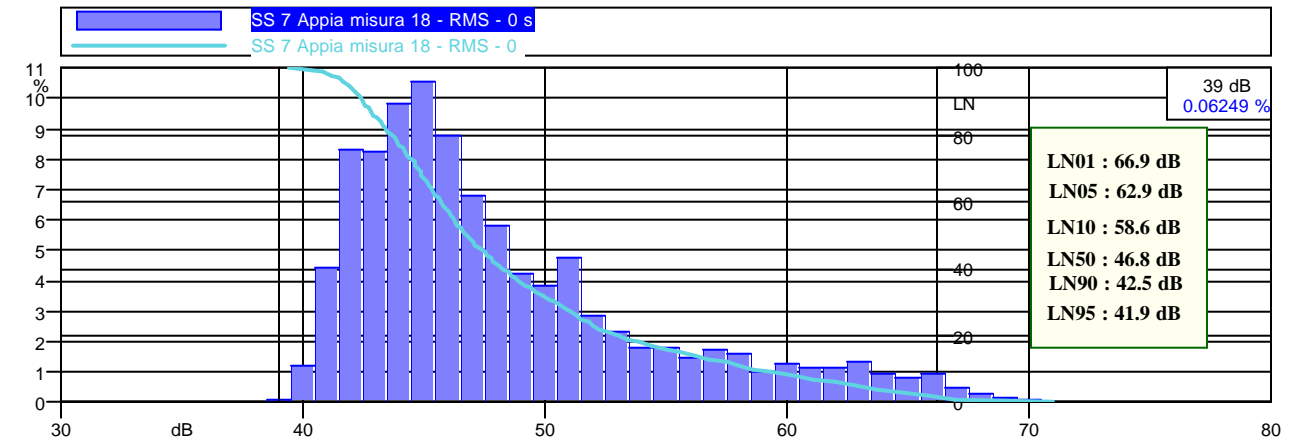
SS 7 Appia misura 17 - TH Spectrum - Lineare



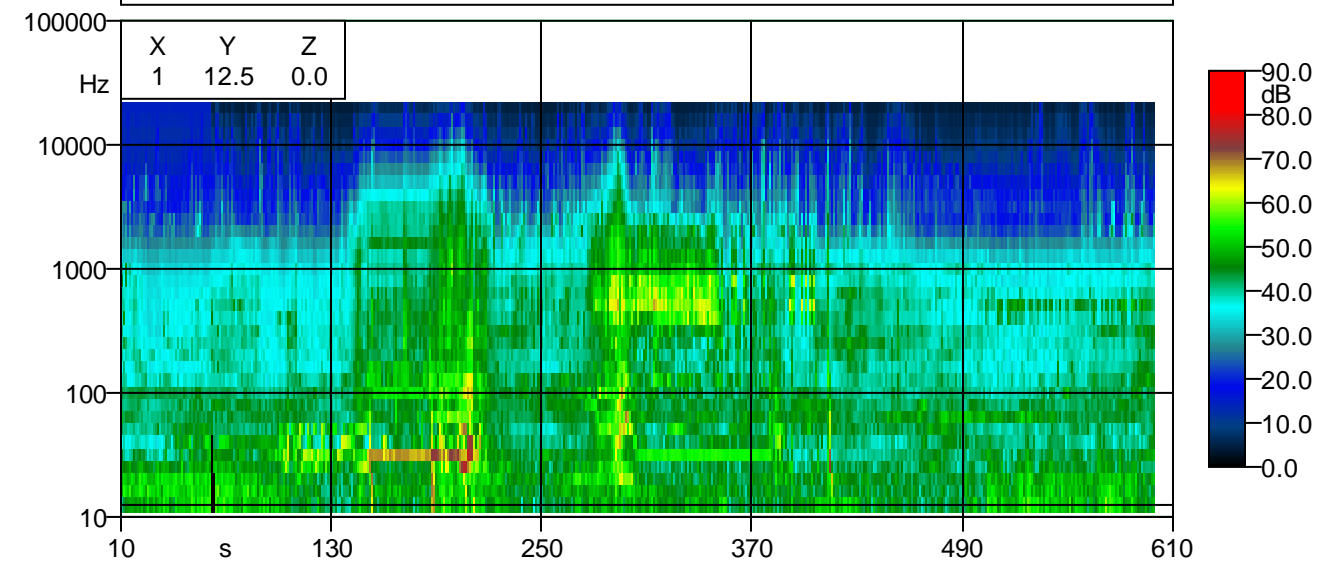
Nome: SS 7 Appia misura 18
 Operatore: Ing.M.Bianchi, Ing.V.Navigari, dott. A.Del Cimmuto
 Strumentazione: Larson-Davis 824 Durata Misura: 600 secondi



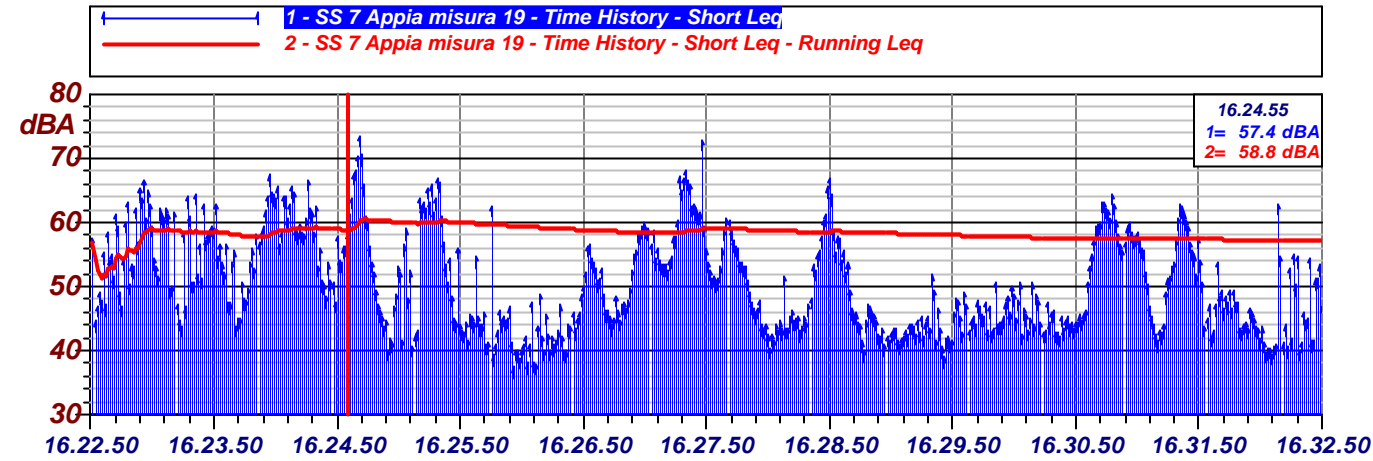
Leq (A): 55.3 dBA	Leq (C): 62.8 dBC	Leq (Lin): 64.4 dB
SEL (A): 83.1 dBA	SEL (C): 90.6 dBC	SEL (Lin): 92.2 dB
Peak (A): 91.5 dBA	Peak (C): 94.6 dBC	Peak (Lin): 96.7 dB



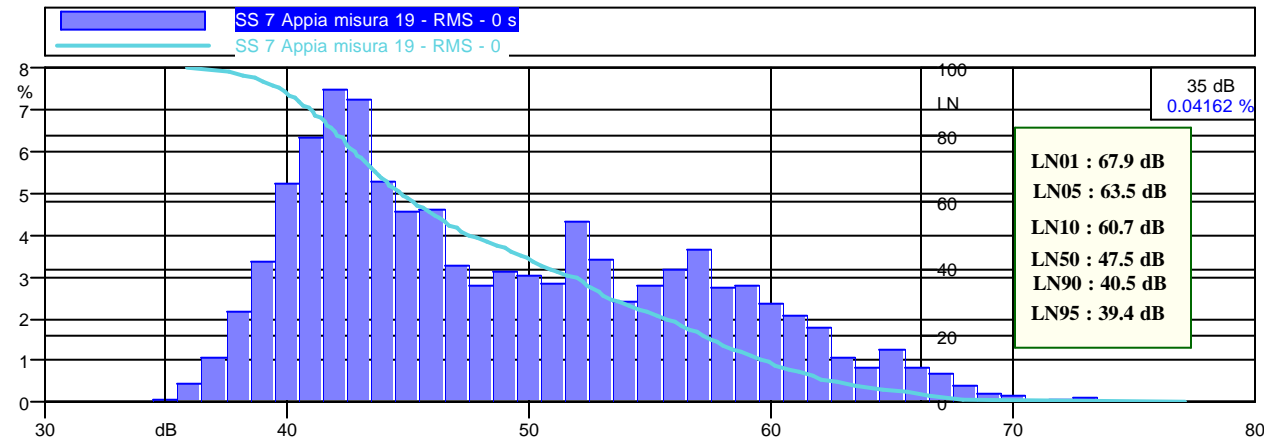
SS 7 Appia misura 18 - TH Spectrum - Lineare



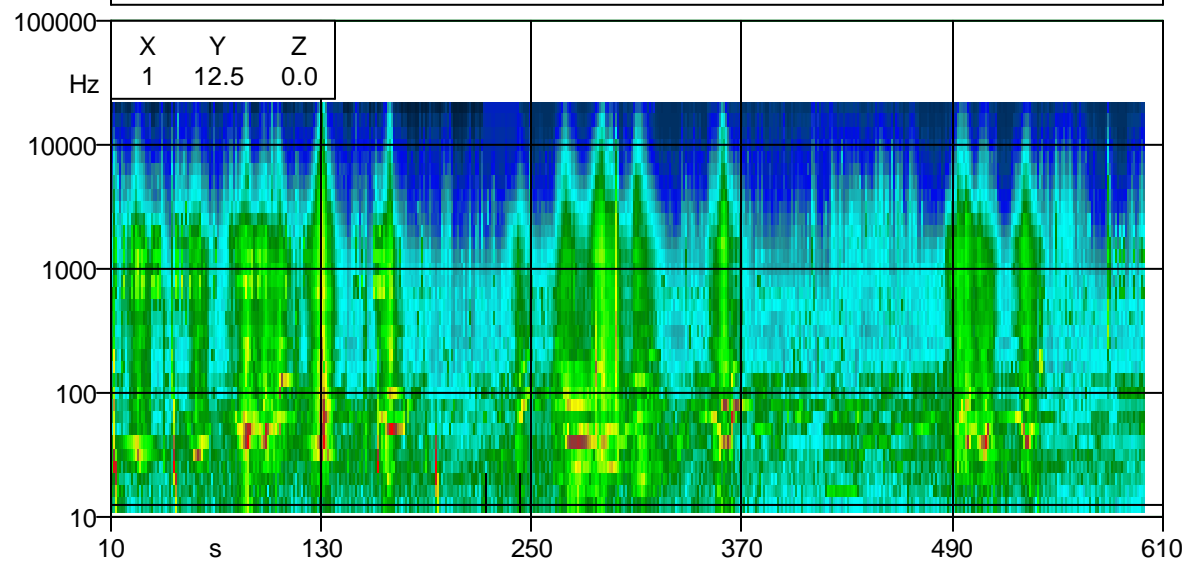
Nome: SS 7 Appia misura 19
 Operatore: Ing.M.Bianchi, Ing.V.Navigari, Dott.A.Del Cimmuto
 Strumentazione: Larson-Davis 824 Durata Misura: 601 secondi



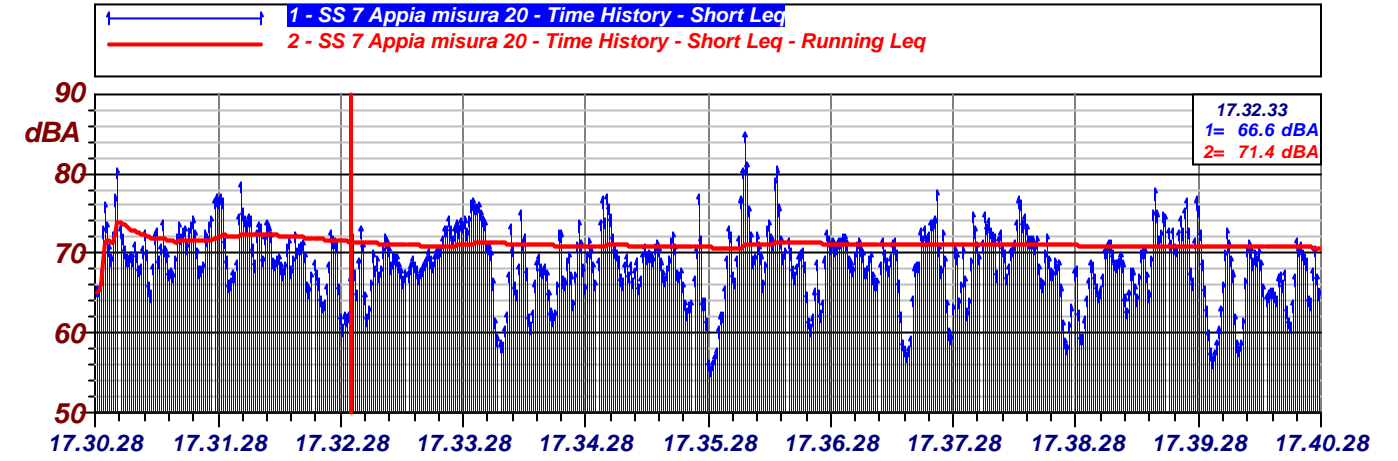
Leq (A): 57.0 dBA	Leq (C): 67.1 dBC	Leq (Lin): 68.4 dB
SEL (A): 84.8 dBA	SEL (C): 94.9 dBC	SEL (Lin): 96.2 dB
Peak (A): 91.8 dBA	Peak (C): 98.0 dBC	Peak (Lin): 100.4 dB



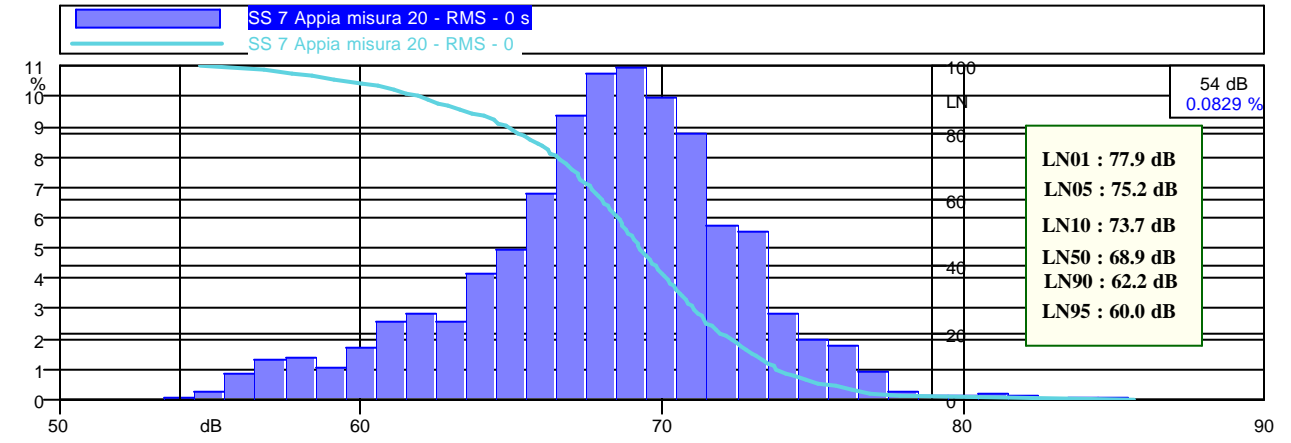
SS 7 Appia misura 19 - TH Spectrum - Lineare



Nome: SS 7 Appia misura 20
 Operatore: Ing.M.Bianchi, Ing.V.Navigari, Dott.A.Del Cimmuto
 Strumentazione: Larson-Davis 824 Durata Misura: 603 secondi



Leq (A): 70.7 dBA	Leq (C): 78.2 dBC	Leq (Lin): 79.0 dB
SEL (A): 98.5 dBA	SEL (C): 106.0 dBC	SEL (Lin): 106.8 dB
Peak (A): 97.8 dBA	Peak (C): 103.6 dBC	Peak (Lin): 104.6 dB



SS 7 Appia misura 20 - TH Spectrum - Lineare

