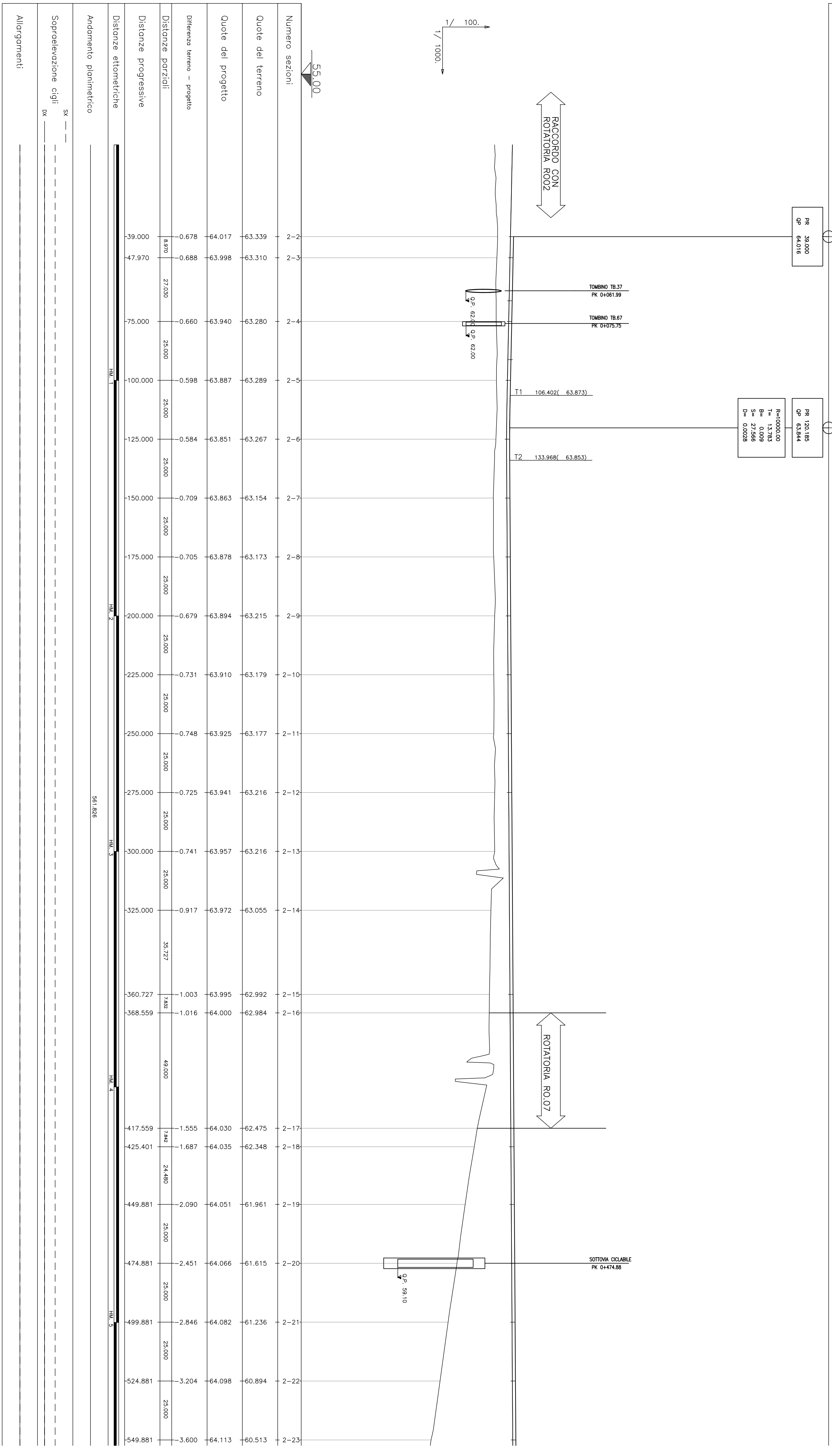
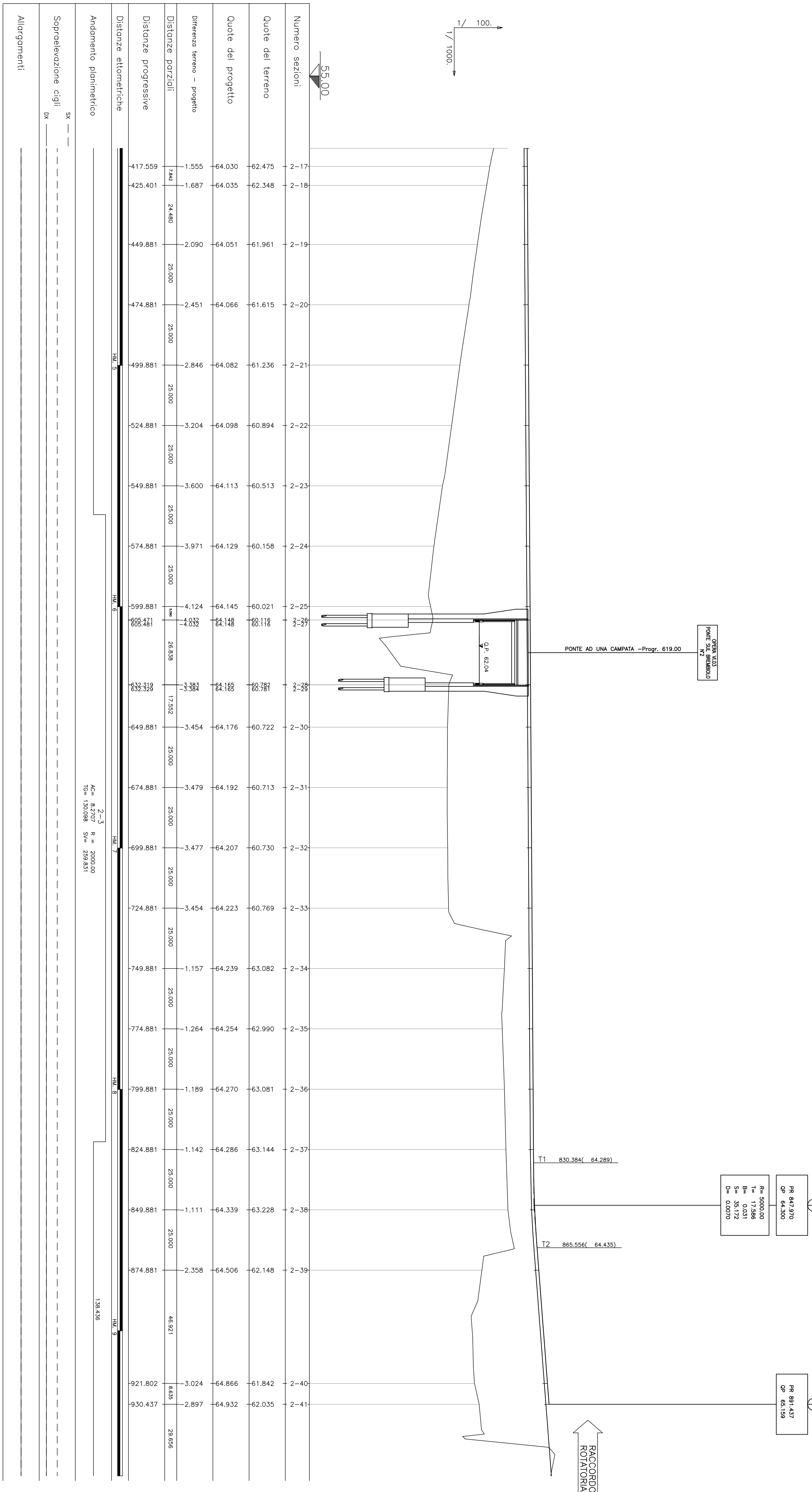


Elementi livellati  
 P<sub>1</sub> = 42,924 L<sub>1</sub> = 81,180  
 P<sub>2</sub> = 42,374 L<sub>2</sub> = 81,180  
 P<sub>3</sub> = 42,924 L<sub>3</sub> = 81,180  
 P<sub>4</sub> = 42,924 L<sub>4</sub> = 81,180  
 P<sub>5</sub> = 42,924 L<sub>5</sub> = 81,180  
 P<sub>6</sub> = 42,924 L<sub>6</sub> = 81,180  
 P<sub>7</sub> = 42,924 L<sub>7</sub> = 81,180  
 P<sub>8</sub> = 42,924 L<sub>8</sub> = 81,180  
 P<sub>9</sub> = 42,924 L<sub>9</sub> = 81,180  
 P<sub>10</sub> = 42,924 L<sub>10</sub> = 81,180  
 P<sub>11</sub> = 42,924 L<sub>11</sub> = 81,180  
 P<sub>12</sub> = 42,924 L<sub>12</sub> = 81,180  
 P<sub>13</sub> = 42,924 L<sub>13</sub> = 81,180  
 P<sub>14</sub> = 42,924 L<sub>14</sub> = 81,180  
 P<sub>15</sub> = 42,924 L<sub>15</sub> = 81,180  
 P<sub>16</sub> = 42,924 L<sub>16</sub> = 81,180  
 P<sub>17</sub> = 42,924 L<sub>17</sub> = 81,180  
 P<sub>18</sub> = 42,924 L<sub>18</sub> = 81,180  
 P<sub>19</sub> = 42,924 L<sub>19</sub> = 81,180  
 P<sub>20</sub> = 42,924 L<sub>20</sub> = 81,180  
 P<sub>21</sub> = 42,924 L<sub>21</sub> = 81,180  
 P<sub>22</sub> = 42,924 L<sub>22</sub> = 81,180  
 P<sub>23</sub> = 42,924 L<sub>23</sub> = 81,180  
 P<sub>24</sub> = 42,924 L<sub>24</sub> = 81,180  
 P<sub>25</sub> = 42,924 L<sub>25</sub> = 81,180  
 P<sub>26</sub> = 42,924 L<sub>26</sub> = 81,180  
 P<sub>27</sub> = 42,924 L<sub>27</sub> = 81,180  
 P<sub>28</sub> = 42,924 L<sub>28</sub> = 81,180  
 P<sub>29</sub> = 42,924 L<sub>29</sub> = 81,180  
 P<sub>30</sub> = 42,924 L<sub>30</sub> = 81,180  
 P<sub>31</sub> = 42,924 L<sub>31</sub> = 81,180  
 P<sub>32</sub> = 42,924 L<sub>32</sub> = 81,180  
 P<sub>33</sub> = 42,924 L<sub>33</sub> = 81,180  
 P<sub>34</sub> = 42,924 L<sub>34</sub> = 81,180  
 P<sub>35</sub> = 42,924 L<sub>35</sub> = 81,180  
 P<sub>36</sub> = 42,924 L<sub>36</sub> = 81,180  
 P<sub>37</sub> = 42,924 L<sub>37</sub> = 81,180  
 P<sub>38</sub> = 42,924 L<sub>38</sub> = 81,180  
 P<sub>39</sub> = 42,924 L<sub>39</sub> = 81,180  
 P<sub>40</sub> = 42,924 L<sub>40</sub> = 81,180  
 P<sub>41</sub> = 42,924 L<sub>41</sub> = 81,180  
 P<sub>42</sub> = 42,924 L<sub>42</sub> = 81,180  
 P<sub>43</sub> = 42,924 L<sub>43</sub> = 81,180  
 P<sub>44</sub> = 42,924 L<sub>44</sub> = 81,180  
 P<sub>45</sub> = 42,924 L<sub>45</sub> = 81,180  
 P<sub>46</sub> = 42,924 L<sub>46</sub> = 81,180  
 P<sub>47</sub> = 42,924 L<sub>47</sub> = 81,180  
 P<sub>48</sub> = 42,924 L<sub>48</sub> = 81,180  
 P<sub>49</sub> = 42,924 L<sub>49</sub> = 81,180  
 P<sub>50</sub> = 42,924 L<sub>50</sub> = 81,180  
 P<sub>51</sub> = 42,924 L<sub>51</sub> = 81,180  
 P<sub>52</sub> = 42,924 L<sub>52</sub> = 81,180  
 P<sub>53</sub> = 42,924 L<sub>53</sub> = 81,180  
 P<sub>54</sub> = 42,924 L<sub>54</sub> = 81,180  
 P<sub>55</sub> = 42,924 L<sub>55</sub> = 81,180  
 P<sub>56</sub> = 42,924 L<sub>56</sub> = 81,180  
 P<sub>57</sub> = 42,924 L<sub>57</sub> = 81,180  
 P<sub>58</sub> = 42,924 L<sub>58</sub> = 81,180  
 P<sub>59</sub> = 42,924 L<sub>59</sub> = 81,180  
 P<sub>60</sub> = 42,924 L<sub>60</sub> = 81,180  
 P<sub>61</sub> = 42,924 L<sub>61</sub> = 81,180  
 P<sub>62</sub> = 42,924 L<sub>62</sub> = 81,180  
 P<sub>63</sub> = 42,924 L<sub>63</sub> = 81,180  
 P<sub>64</sub> = 42,924 L<sub>64</sub> = 81,180  
 P<sub>65</sub> = 42,924 L<sub>65</sub> = 81,180  
 P<sub>66</sub> = 42,924 L<sub>66</sub> = 81,180  
 P<sub>67</sub> = 42,924 L<sub>67</sub> = 81,180  
 P<sub>68</sub> = 42,924 L<sub>68</sub> = 81,180  
 P<sub>69</sub> = 42,924 L<sub>69</sub> = 81,180  
 P<sub>70</sub> = 42,924 L<sub>70</sub> = 81,180  
 P<sub>71</sub> = 42,924 L<sub>71</sub> = 81,180  
 P<sub>72</sub> = 42,924 L<sub>72</sub> = 81,180  
 P<sub>73</sub> = 42,924 L<sub>73</sub> = 81,180  
 P<sub>74</sub> = 42,924 L<sub>74</sub> = 81,180  
 P<sub>75</sub> = 42,924 L<sub>75</sub> = 81,180  
 P<sub>76</sub> = 42,924 L<sub>76</sub> = 81,180  
 P<sub>77</sub> = 42,924 L<sub>77</sub> = 81,180  
 P<sub>78</sub> = 42,924 L<sub>78</sub> = 81,180  
 P<sub>79</sub> = 42,924 L<sub>79</sub> = 81,180  
 P<sub>80</sub> = 42,924 L<sub>80</sub> = 81,180  
 P<sub>81</sub> = 42,924 L<sub>81</sub> = 81,180  
 P<sub>82</sub> = 42,924 L<sub>82</sub> = 81,180  
 P<sub>83</sub> = 42,924 L<sub>83</sub> = 81,180  
 P<sub>84</sub> = 42,924 L<sub>84</sub> = 81,180  
 P<sub>85</sub> = 42,924 L<sub>85</sub> = 81,180  
 P<sub>86</sub> = 42,924 L<sub>86</sub> = 81,180  
 P<sub>87</sub> = 42,924 L<sub>87</sub> = 81,180  
 P<sub>88</sub> = 42,924 L<sub>88</sub> = 81,180  
 P<sub>89</sub> = 42,924 L<sub>89</sub> = 81,180  
 P<sub>90</sub> = 42,924 L<sub>90</sub> = 81,180  
 P<sub>91</sub> = 42,924 L<sub>91</sub> = 81,180  
 P<sub>92</sub> = 42,924 L<sub>92</sub> = 81,180  
 P<sub>93</sub> = 42,924 L<sub>93</sub> = 81,180  
 P<sub>94</sub> = 42,924 L<sub>94</sub> = 81,180  
 P<sub>95</sub> = 42,924 L<sub>95</sub> = 81,180  
 P<sub>96</sub> = 42,924 L<sub>96</sub> = 81,180  
 P<sub>97</sub> = 42,924 L<sub>97</sub> = 81,180  
 P<sub>98</sub> = 42,924 L<sub>98</sub> = 81,180  
 P<sub>99</sub> = 42,924 L<sub>99</sub> = 81,180  
 P<sub>100</sub> = 42,924 L<sub>100</sub> = 81,180



Elementi livellati  
 P<sub>1</sub> = 42,924 L<sub>1</sub> = 81,180  
 P<sub>2</sub> = 42,374 L<sub>2</sub> = 81,180  
 P<sub>3</sub> = 42,924 L<sub>3</sub> = 81,180  
 P<sub>4</sub> = 42,924 L<sub>4</sub> = 81,180  
 P<sub>5</sub> = 42,924 L<sub>5</sub> = 81,180  
 P<sub>6</sub> = 42,924 L<sub>6</sub> = 81,180  
 P<sub>7</sub> = 42,924 L<sub>7</sub> = 81,180  
 P<sub>8</sub> = 42,924 L<sub>8</sub> = 81,180  
 P<sub>9</sub> = 42,924 L<sub>9</sub> = 81,180  
 P<sub>10</sub> = 42,924 L<sub>10</sub> = 81,180  
 P<sub>11</sub> = 42,924 L<sub>11</sub> = 81,180  
 P<sub>12</sub> = 42,924 L<sub>12</sub> = 81,180  
 P<sub>13</sub> = 42,924 L<sub>13</sub> = 81,180  
 P<sub>14</sub> = 42,924 L<sub>14</sub> = 81,180  
 P<sub>15</sub> = 42,924 L<sub>15</sub> = 81,180  
 P<sub>16</sub> = 42,924 L<sub>16</sub> = 81,180  
 P<sub>17</sub> = 42,924 L<sub>17</sub> = 81,180  
 P<sub>18</sub> = 42,924 L<sub>18</sub> = 81,180  
 P<sub>19</sub> = 42,924 L<sub>19</sub> = 81,180  
 P<sub>20</sub> = 42,924 L<sub>20</sub> = 81,180  
 P<sub>21</sub> = 42,924 L<sub>21</sub> = 81,180  
 P<sub>22</sub> = 42,924 L<sub>22</sub> = 81,180  
 P<sub>23</sub> = 42,924 L<sub>23</sub> = 81,180  
 P<sub>24</sub> = 42,924 L<sub>24</sub> = 81,180  
 P<sub>25</sub> = 42,924 L<sub>25</sub> = 81,180  
 P<sub>26</sub> = 42,924 L<sub>26</sub> = 81,180  
 P<sub>27</sub> = 42,924 L<sub>27</sub> = 81,180  
 P<sub>28</sub> = 42,924 L<sub>28</sub> = 81,180  
 P<sub>29</sub> = 42,924 L<sub>29</sub> = 81,180  
 P<sub>30</sub> = 42,924 L<sub>30</sub> = 81,180  
 P<sub>31</sub> = 42,924 L<sub>31</sub> = 81,180  
 P<sub>32</sub> = 42,924 L<sub>32</sub> = 81,180  
 P<sub>33</sub> = 42,924 L<sub>33</sub> = 81,180  
 P<sub>34</sub> = 42,924 L<sub>34</sub> = 81,180  
 P<sub>35</sub> = 42,924 L<sub>35</sub> = 81,180  
 P<sub>36</sub> = 42,924 L<sub>36</sub> = 81,180  
 P<sub>37</sub> = 42,924 L<sub>37</sub> = 81,180  
 P<sub>38</sub> = 42,924 L<sub>38</sub> = 81,180  
 P<sub>39</sub> = 42,924 L<sub>39</sub> = 81,180  
 P<sub>40</sub> = 42,924 L<sub>40</sub> = 81,180  
 P<sub>41</sub> = 42,924 L<sub>41</sub> = 81,180  
 P<sub>42</sub> = 42,924 L<sub>42</sub> = 81,180  
 P<sub>43</sub> = 42,924 L<sub>43</sub> = 81,180  
 P<sub>44</sub> = 42,924 L<sub>44</sub> = 81,180  
 P<sub>45</sub> = 42,924 L<sub>45</sub> = 81,180  
 P<sub>46</sub> = 42,924 L<sub>46</sub> = 81,180  
 P<sub>47</sub> = 42,924 L<sub>47</sub> = 81,180  
 P<sub>48</sub> = 42,924 L<sub>48</sub> = 81,180  
 P<sub>49</sub> = 42,924 L<sub>49</sub> = 81,180  
 P<sub>50</sub> = 42,924 L<sub>50</sub> = 81,180  
 P<sub>51</sub> = 42,924 L<sub>51</sub> = 81,180  
 P<sub>52</sub> = 42,924 L<sub>52</sub> = 81,180  
 P<sub>53</sub> = 42,924 L<sub>53</sub> = 81,180  
 P<sub>54</sub> = 42,924 L<sub>54</sub> = 81,180  
 P<sub>55</sub> = 42,924 L<sub>55</sub> = 81,180  
 P<sub>56</sub> = 42,924 L<sub>56</sub> = 81,180  
 P<sub>57</sub> = 42,924 L<sub>57</sub> = 81,180  
 P<sub>58</sub> = 42,924 L<sub>58</sub> = 81,180  
 P<sub>59</sub> = 42,924 L<sub>59</sub> = 81,180  
 P<sub>60</sub> = 42,924 L<sub>60</sub> = 81,180  
 P<sub>61</sub> = 42,924 L<sub>61</sub> = 81,180  
 P<sub>62</sub> = 42,924 L<sub>62</sub> = 81,180  
 P<sub>63</sub> = 42,924 L<sub>63</sub> = 81,180  
 P<sub>64</sub> = 42,924 L<sub>64</sub> = 81,180  
 P<sub>65</sub> = 42,924 L<sub>65</sub> = 81,180  
 P<sub>66</sub> = 42,924 L<sub>66</sub> = 81,180  
 P<sub>67</sub> = 42,924 L<sub>67</sub> = 81,180  
 P<sub>68</sub> = 42,924 L<sub>68</sub> = 81,180  
 P<sub>69</sub> = 42,924 L<sub>69</sub> = 81,180  
 P<sub>70</sub> = 42,924 L<sub>70</sub> = 81,180  
 P<sub>71</sub> = 42,924 L<sub>71</sub> = 81,180  
 P<sub>72</sub> = 42,924 L<sub>72</sub> = 81,180  
 P<sub>73</sub> = 42,924 L<sub>73</sub> = 81,180  
 P<sub>74</sub> = 42,924 L<sub>74</sub> = 81,180  
 P<sub>75</sub> = 42,924 L<sub>75</sub> = 81,180  
 P<sub>76</sub> = 42,924 L<sub>76</sub> = 81,180  
 P<sub>77</sub> = 42,924 L<sub>77</sub> = 81,180  
 P<sub>78</sub> = 42,924 L<sub>78</sub> = 81,180  
 P<sub>79</sub> = 42,924 L<sub>79</sub> = 81,180  
 P<sub>80</sub> = 42,924 L<sub>80</sub> = 81,180  
 P<sub>81</sub> = 42,924 L<sub>81</sub> = 81,180  
 P<sub>82</sub> = 42,924 L<sub>82</sub> = 81,180  
 P<sub>83</sub> = 42,924 L<sub>83</sub> = 81,180  
 P<sub>84</sub> = 42,924 L<sub>84</sub> = 81,180  
 P<sub>85</sub> = 42,924 L<sub>85</sub> = 81,180  
 P<sub>86</sub> = 42,924 L<sub>86</sub> = 81,180  
 P<sub>87</sub> = 42,924 L<sub>87</sub> = 81,180  
 P<sub>88</sub> = 42,924 L<sub>88</sub> = 81,180  
 P<sub>89</sub> = 42,924 L<sub>89</sub> = 81,180  
 P<sub>90</sub> = 42,924 L<sub>90</sub> = 81,180  
 P<sub>91</sub> = 42,924 L<sub>91</sub> = 81,180  
 P<sub>92</sub> = 42,924 L<sub>92</sub> = 81,180  
 P<sub>93</sub> = 42,924 L<sub>93</sub> = 81,180  
 P<sub>94</sub> = 42,924 L<sub>94</sub> = 81,180  
 P<sub>95</sub> = 42,924 L<sub>95</sub> = 81,180  
 P<sub>96</sub> = 42,924 L<sub>96</sub> = 81,180  
 P<sub>97</sub> = 42,924 L<sub>97</sub> = 81,180  
 P<sub>98</sub> = 42,924 L<sub>98</sub> = 81,180  
 P<sub>99</sub> = 42,924 L<sub>99</sub> = 81,180  
 P<sub>100</sub> = 42,924 L<sub>100</sub> = 81,180



Numero sezioni	Quota del terreno	Quota del progetto	Differenza terreno - progetto	Distanze parziali	Distanze progressive	Distanze altimetriche
2-17	42.475	44.030	-1.555		417.550	
2-18	42.348	44.035	-1.687	24.400	425.401	
2-19	41.961	44.051	-2.090	23.500	449.881	
2-20	41.915	44.066	-2.451	23.500	474.881	
2-21	41.236	44.002	-2.846	23.500	499.881	
2-22	40.894	44.098	-3.204	23.500	524.881	
2-23	40.513	44.113	-3.600	23.500	549.881	
2-24	40.158	44.129	-3.971	23.500	574.881	
2-25	40.021	44.145	-4.124	23.500	599.881	
2-26	40.021	44.145	-4.124	23.500	624.881	
2-27	40.021	44.145	-4.124	23.500	649.881	
2-28	40.021	44.145	-4.124	23.500	674.881	
2-29	40.021	44.145	-4.124	23.500	699.881	
2-30	40.722	44.176	-3.454	23.500	724.881	
2-31	40.713	44.192	-3.479	23.500	749.881	
2-32	40.730	44.207	-3.477	23.500	774.881	
2-33	40.769	44.223	-3.454	23.500	799.881	
2-34	43.082	44.239	-1.157	23.500	824.881	
2-35	42.990	44.254	-1.264	23.500	849.881	
2-36	43.081	44.270	-1.189	23.500	874.881	
2-37	43.144	44.286	-1.142	23.500	899.881	
2-38	43.228	44.339	-1.111	23.500	924.881	
2-39	42.148	44.506	-2.358	44.931	930.437	
2-40	41.842	44.886	-3.044			
2-41	42.035	44.949	-2.897			

Numero sezioni	Quota del terreno	Quota del progetto	Differenza terreno - progetto	Distanze parziali	Distanze progressive	Distanze altimetriche
2-17	42.475	44.030	-1.555		417.550	
2-18	42.348	44.035	-1.687	24.400	425.401	
2-19	41.961	44.051	-2.090	23.500	449.881	
2-20	41.915	44.066	-2.451	23.500	474.881	
2-21	41.236	44.002	-2.846	23.500	499.881	
2-22	40.894	44.098	-3.204	23.500	524.881	
2-23	40.513	44.113	-3.600	23.500	549.881	
2-24	40.158	44.129	-3.971	23.500	574.881	
2-25	40.021	44.145	-4.124	23.500	599.881	
2-26	40.021	44.145	-4.124	23.500	624.881	
2-27	40.021	44.145	-4.124	23.500	649.881	
2-28	40.021	44.145	-4.124	23.500	674.881	
2-29	40.021	44.145	-4.124	23.500	699.881	
2-30	40.722	44.176	-3.454	23.500	724.881	
2-31	40.713	44.192	-3.479	23.500	749.881	
2-32	40.730	44.207	-3.477	23.500	774.881	
2-33	40.769	44.223	-3.454	23.500	799.881	
2-34	43.082	44.239	-1.157	23.500	824.881	
2-35	42.990	44.254	-1.264	23.500	849.881	
2-36	43.081	44.270	-1.189	23.500	874.881	
2-37	43.144	44.286	-1.142	23.500	899.881	
2-38	43.228	44.339	-1.111	23.500	924.881	
2-39	42.148	44.506	-2.358	44.931	930.437	
2-40	41.842	44.886	-3.044			
2-41	42.035	44.949	-2.897			

**Anas SPA**  
 DIREZIONE CENTRALE PROGETTAZIONE

**S.S. N. 9 "Via Emilia"**  
 Variante di Casalpusterlenigo ed eliminazione  
 passaggio a livello sulla SP ex S.S. N. 234

**PROGETTO DEFINITIVO**

**PROGETTISTA**  
 Ing. Massimo SIRONI  
 Via S. Maria Maddalena, 10  
 31044 Montebelluna (TV) - Tel. 0422/861111

**CONTRIBUTI SPECIALISTICI**

**PROGETTO RESPONSABILE**  
 Ing. Massimo SIRONI  
 Via S. Maria Maddalena, 10  
 31044 Montebelluna (TV) - Tel. 0422/861111

**PROFLO LONGITUDINALE ASSE 2**

SA04 1405

FEBBRAIO 2011

SA04 1405

FEBBRAIO 2011

01/01