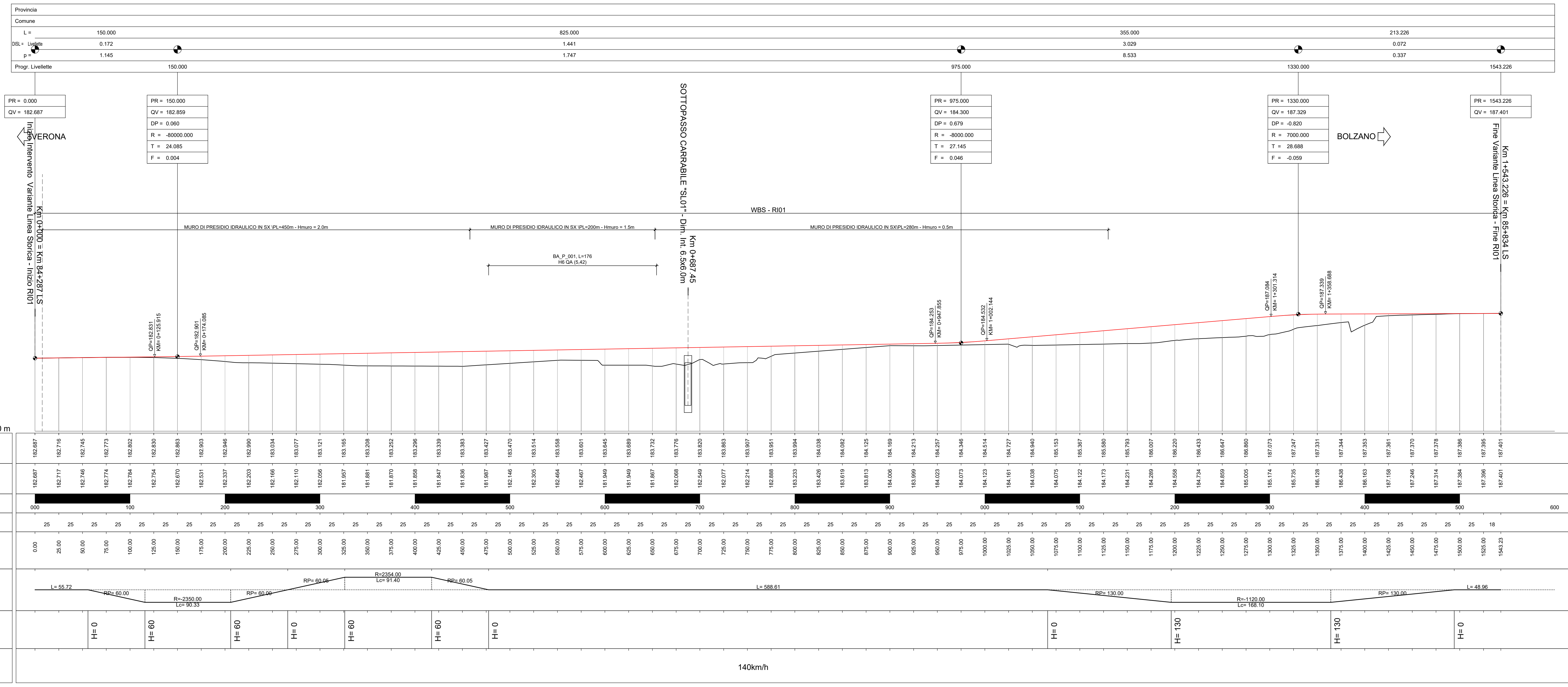
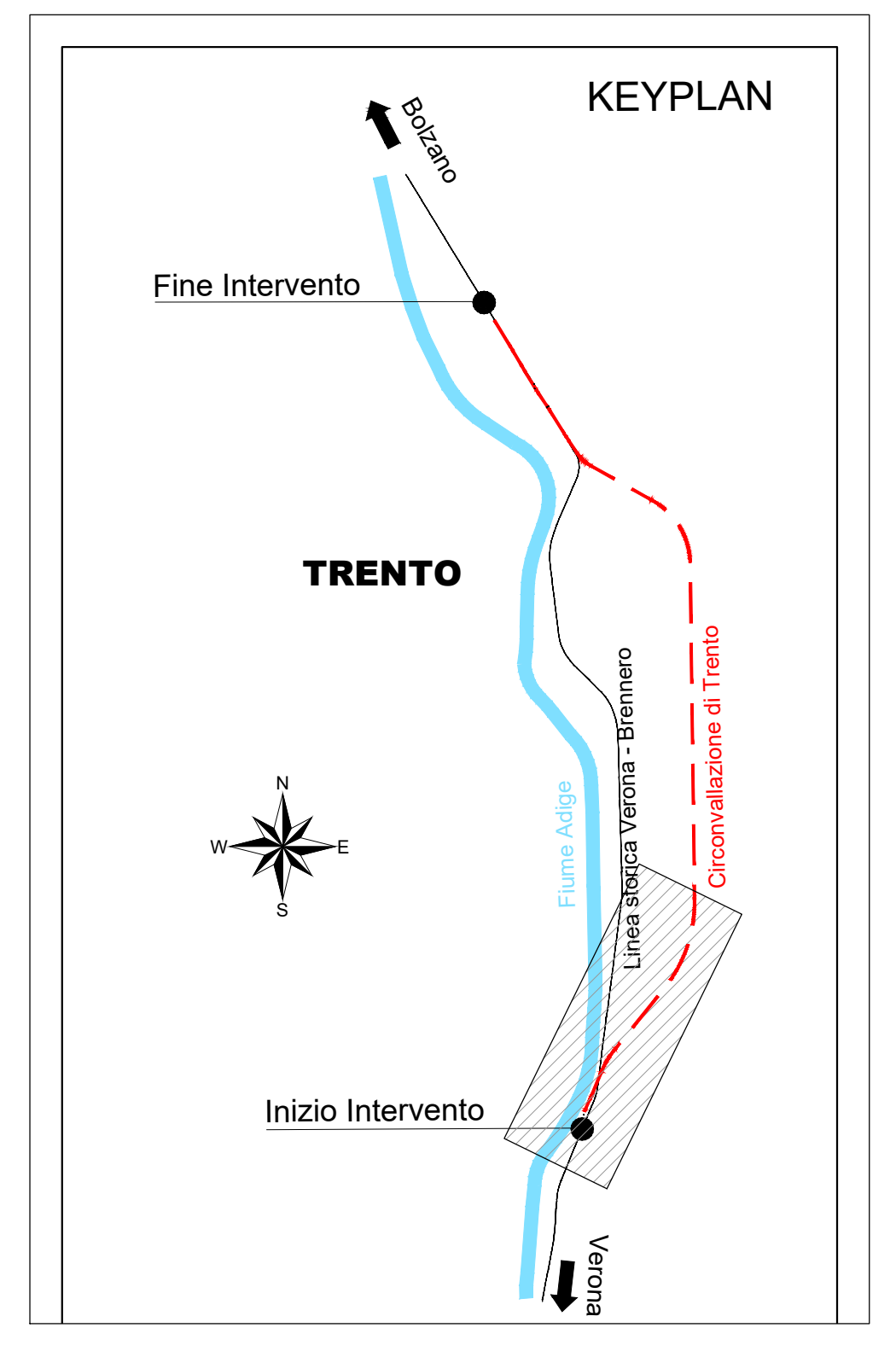


PLANIMETRIA DI PROGETTO
VARIANTE LINEA STORICA LOCALITA' ACQUAVIVA
SCALA 1:2000



QUOTE PROGETTO	QUOTE TERRENO	ETOMETRICHE	DIST. PARZIALI	PROGRESSIVE	ANDAMENTO PLANIMETRICO	SOPRAELEVAZIONE	VELOCITA'
182.807	182.717	000	25	0.00	L=55.72	H=0	140km/h
182.807	182.745	100	25	25.00	R=2350.00	H=60	
182.807	182.773	200	25	50.00	R=2350.00	H=60	
182.807	182.802	300	25	75.00	R=2350.00	H=60	
182.807	182.830	400	25	100.00	R=2350.00	H=60	
182.807	182.858	500	25	125.00	R=2350.00	H=60	
182.807	182.886	600	25	150.00	R=2350.00	H=60	
182.807	182.914	700	25	175.00	R=2350.00	H=60	
182.807	182.942	800	25	200.00	R=2350.00	H=60	
182.807	182.970	900	25	225.00	R=2350.00	H=60	
182.807	182.998	1000	25	250.00	R=2350.00	H=60	
182.807	183.026	1100	25	275.00	R=2350.00	H=60	
182.807	183.054	1200	25	300.00	R=2350.00	H=60	
182.807	183.082	1300	25	325.00	R=2350.00	H=60	
182.807	183.110	1400	25	350.00	R=2350.00	H=60	
182.807	183.138	1500	25	375.00	R=2350.00	H=60	
182.807	183.166	1600	25	400.00	R=2350.00	H=60	
182.807	183.194	1700	25	425.00	R=2350.00	H=60	
182.807	183.222	1800	25	450.00	R=2350.00	H=60	
182.807	183.250	1900	25	475.00	R=2350.00	H=60	
182.807	183.278	2000	25	500.00	R=2350.00	H=60	
182.807	183.306	2100	25	525.00	R=2350.00	H=60	
182.807	183.334	2200	25	550.00	R=2350.00	H=60	
182.807	183.362	2300	25	575.00	R=2350.00	H=60	
182.807	183.390	2400	25	600.00	R=2350.00	H=60	
182.807	183.418	2500	25	625.00	R=2350.00	H=60	
182.807	183.446	2600	25	650.00	R=2350.00	H=60	
182.807	183.474	2700	25	675.00	R=2350.00	H=60	
182.807	183.502	2800	25	700.00	R=2350.00	H=60	
182.807	183.530	2900	25	725.00	R=2350.00	H=60	
182.807	183.558	3000	25	750.00	R=2350.00	H=60	
182.807	183.586	3100	25	775.00	R=2350.00	H=60	
182.807	183.614	3200	25	800.00	R=2350.00	H=60	
182.807	183.642	3300	25	825.00	R=2350.00	H=60	
182.807	183.670	3400	25	850.00	R=2350.00	H=60	
182.807	183.698	3500	25	875.00	R=2350.00	H=60	
182.807	183.726	3600	25	900.00	R=2350.00	H=60	
182.807	183.754	3700	25	925.00	R=2350.00	H=60	
182.807	183.782	3800	25	950.00	R=2350.00	H=60	
182.807	183.810	3900	25	975.00	R=2350.00	H=60	
182.807	183.838	4000	25	1000.00	R=2350.00	H=60	
182.807	183.866	4100	25	1025.00	R=2350.00	H=60	
182.807	183.894	4200	25	1050.00	R=2350.00	H=60	
182.807	183.922	4300	25	1075.00	R=2350.00	H=60	
182.807	183.950	4400	25	1100.00	R=2350.00	H=60	
182.807	183.978	4500	25	1125.00	R=2350.00	H=60	
182.807	184.006	4600	25	1150.00	R=2350.00	H=60	
182.807	184.034	4700	25	1175.00	R=2350.00	H=60	
182.807	184.062	4800	25	1200.00	R=2350.00	H=60	
182.807	184.090	4900	25	1225.00	R=2350.00	H=60	
182.807	184.118	5000	25	1250.00	R=2350.00	H=60	
182.807	184.146	5100	25	1275.00	R=2350.00	H=60	
182.807	184.174	5200	25	1300.00	R=2350.00	H=60	
182.807	184.202	5300	25	1325.00	R=2350.00	H=60	
182.807	184.230	5400	25	1350.00	R=2350.00	H=60	
182.807	184.258	5500	25	1375.00	R=2350.00	H=60	
182.807	184.286	5600	25	1400.00	R=2350.00	H=60	
182.807	184.314	5700	25	1425.00	R=2350.00	H=60	
182.807	184.342	5800	25	1450.00	R=2350.00	H=60	
182.807	184.370	5900	25	1475.00	R=2350.00	H=60	
182.807	184.398	6000	25	1500.00	R=2350.00	H=60	
182.807	184.426	6100	25	1525.00	R=2350.00	H=60	
182.807	184.454	6200	25	1550.00	R=2350.00	H=60	
182.807	184.482	6300	25	1575.00	R=2350.00	H=60	
182.807	184.510	6400	25	1600.00	R=2350.00	H=60	
182.807	184.538	6500	25	1625.00	R=2350.00	H=60	
182.807	184.566	6600	25	1650.00	R=2350.00	H=60	
182.807	184.594	6700	25	1675.00	R=2350.00	H=60	
182.807	184.622	6800	25	1700.00	R=2350.00	H=60	
182.807	184.650	6900	25	1725.00	R=2350.00	H=60	
182.807	184.678	7000	25	1750.00	R=2350.00	H=60	
182.807	184.706	7100	25	1775.00	R=2350.00	H=60	
182.807	184.734	7200	25	1800.00	R=2350.00	H=60	
182.807	184.762	7300	25	1825.00	R=2350.00	H=60	
182.807	184.790	7400	25	1850.00	R=2350.00	H=60	
182.807	184.818	7500	25	1875.00	R=2350.00	H=60	
182.807	184.846	7600	25	1900.00	R=2350.00	H=60	
182.807	184.874	7700	25	1925.00	R=2350.00	H=60	
182.807	184.902	7800	25	1950.00	R=2350.00	H=60	
182.807	184.930	7900	25	1975.00	R=2350.00	H=60	
182.807	184.958	8000	25	2000.00	R=2350.00	H=60	
182.807	184.986	8100	25	2025.00	R=2350.00	H=60	
182.807	185.014	8200	25	2050.00	R=2350.00	H=60	
182.807	185.042	8300	25	2075.00	R=2350.00	H=60	
182.807	185.070	8400	25	2100.00	R=2350.00	H=60	
182.807	185.098	8500	25	2125.00	R=2350.00	H=60	
182.807	185.126	8600	25	2150.00	R=2350.00	H=60	
182.807	185.154	8700	25	2175.00	R=2350.00	H=60	
182.807	185.182	8800	25	2200.00	R=2350.00	H=60	
182.807	185.210	8900	25	2225.00	R=2350.00	H=60	
182.807	185.238	9000	25	2250.00	R=2350.00	H=60	
182.807	185.266	9100	25	2275.00	R=2350.00	H=60	
182.807	185.294	9200	25	2300.00	R=2350.00	H=60	
182.807	185.322	9300	25	2325.00	R=2350.00	H=60	
182.807	185.350	9400	25	2350.00	R=2350.00	H=60	
182.807	185.378	9500	25	2375.00	R=2350.00	H=60	
182.807	185.406	9600	25	2400.00	R=2350.00	H=60	
182.807	185.434	9700	25	2425.00	R=2350.00	H=60	
182.807	185.462	9800	25	2450.00	R=2350.00	H=60	
182.807	185.490	9900	25	2475.00	R=2350.00	H=60	
182.807	185.518	10000	25	2500.00	R=2350.00	H=60	

COMMITTENTE: **RFI** RETE FERROVIARIA ITALIANA GRUPPO FERROVIE DELLO STATO ITALIANE

PROGETTAZIONE: **ITALFERR** GRUPPO FERROVIE DELLO STATO ITALIANE

U.O. COORDINAMENTO NO CAPTIVE E INGEGNERIA DI SISTEMA

PROGETTO DI FATTIBILITA' TECNICA ED ECONOMICA

ASSE FERROVIARIO MONACO - VERONA

ACCESSO SUD ALLA GALLERIA DI BASE DEL BRENNERO QUADRUPPLICAMENTO DELLA LINEA FORTEZZA - VERONA

LOTTO 3A: CIRCONVALLAZIONE DI TRENTO

INFRASTRUTTURA Variante Linea Storica - Pianoprofilo su ortofoto località Acquaviva

SCALA: 1:2000/200

COMMESSA	LOTTO	FASE	ENTE	TIPO DOC.	OPERA/DISCIPLINA	PROGR.	REV.
IBOQ	3A	R	10	L6	IF0001	001	A

Revis.	Descrizione	Redatto	Data	Verificato	Data	Approvato	Data	Autorizzato / Data
A	Emissione esecutiva	L. Delli	Genno 2021	P. Di Giovanni	Genno 2021	C. Mazzocchi	Genno 2021	G. Ingresso Genno 2021

File: IBOQAR10L6IF001001A.dwg n. Ebb: