

LEGENDA MATERIALI FINITURE

ABACO INTERVENTI

m2 SUPERFICIE

N - ALTEZZA NETTA AMBIENTE
H - FINITURA PAVIMENTO
V - FINITURA PARETI (1)
S - FINITURA SOFFITTO

ABACO INFISSI

H - ALTEZZA INFISSO
B - LARGHEZZA INFISSO
T - TIPO INFISSO

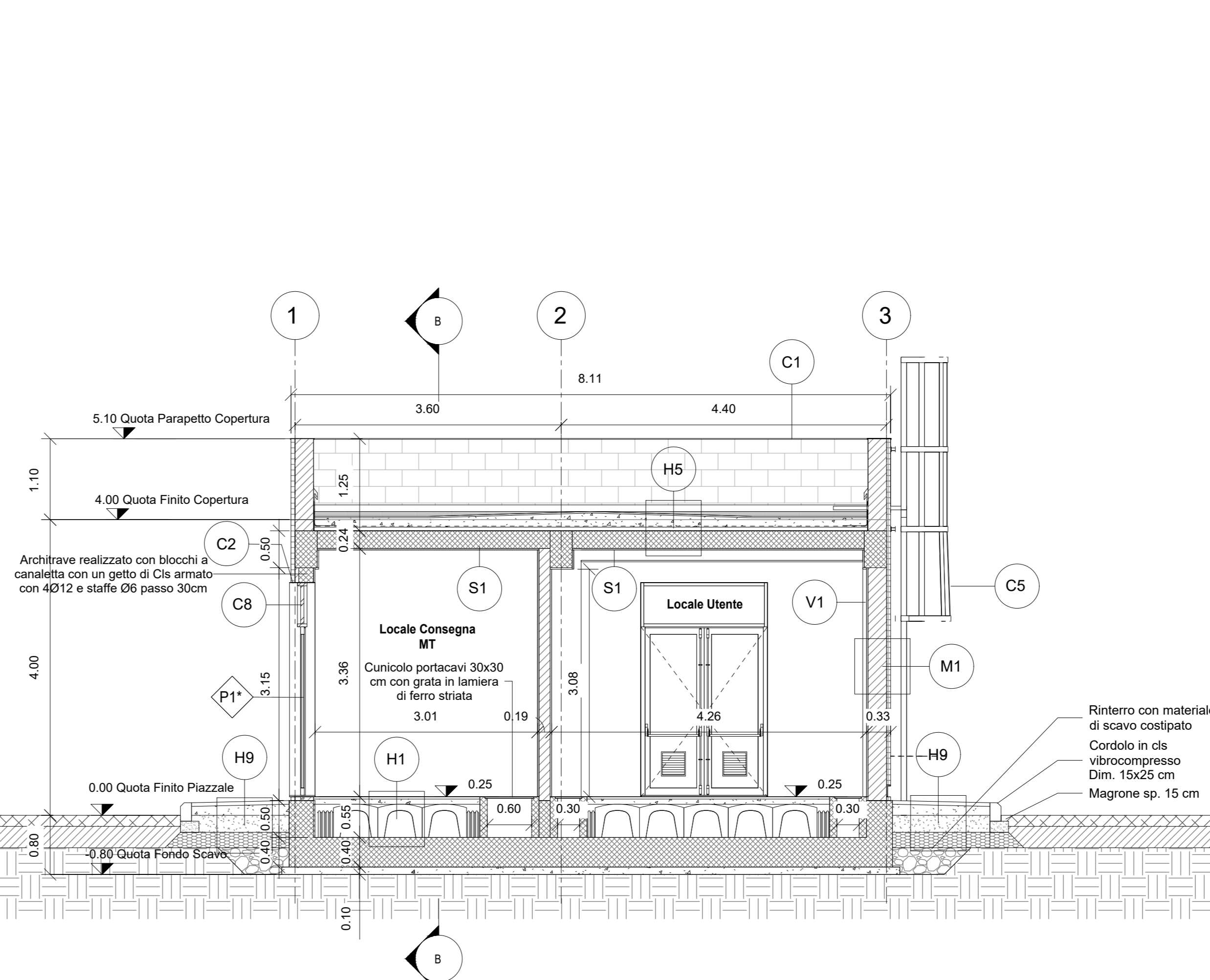
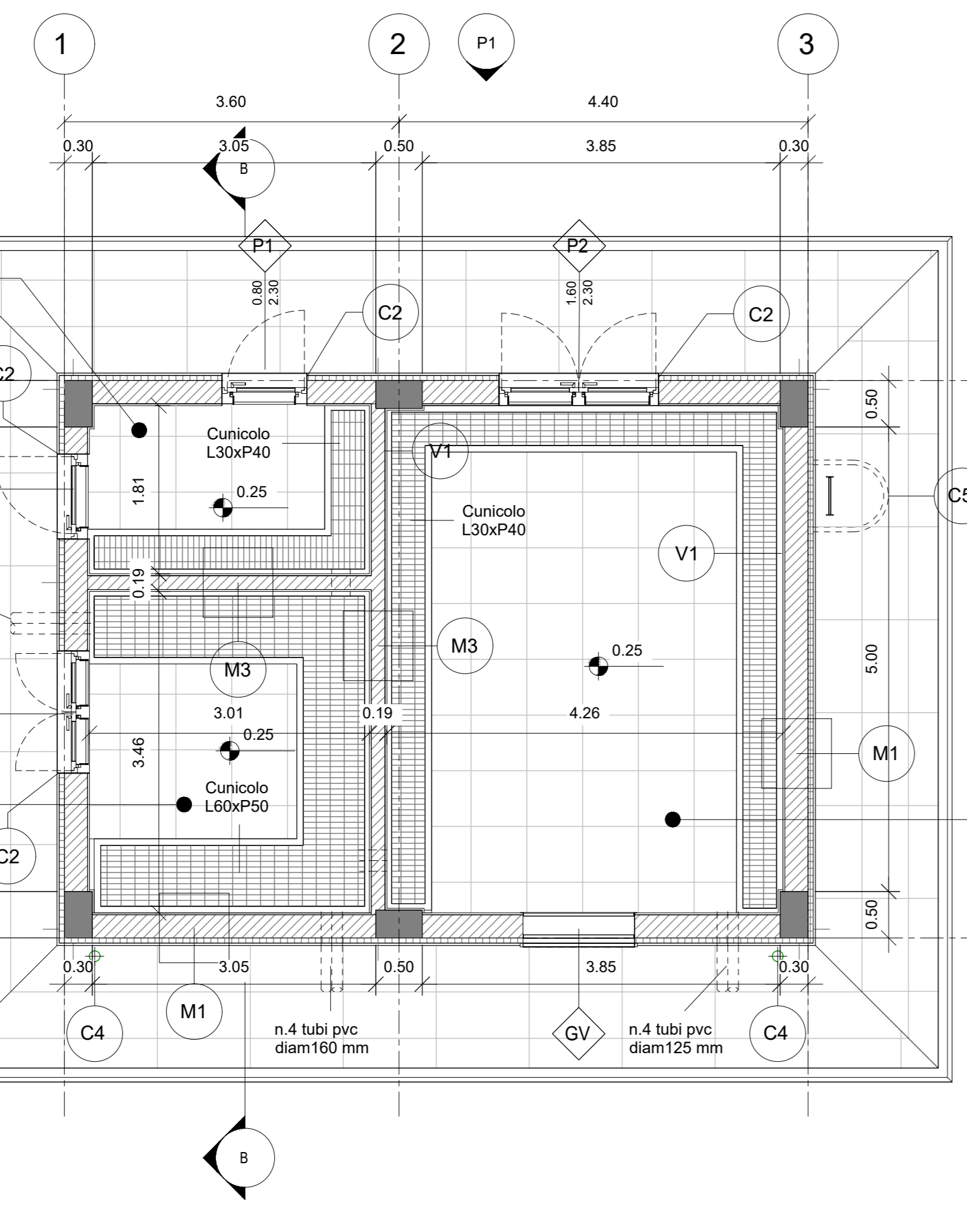
- (1) IN AMBIENTI CON PARETI AVENTI FINITURE DIVERSE L'INDICAZIONE VERSO DATATA PER CIASCUNA PARETE SINGOLARMENTE

Table with 2 columns: Finiture Pavimenti and Opere Metalliche. Lists various construction materials and specifications for floors and metalwork.

Table with 2 columns: Finiture Pareti and Finiture Soffitto. Lists various construction materials and specifications for walls and ceilings.

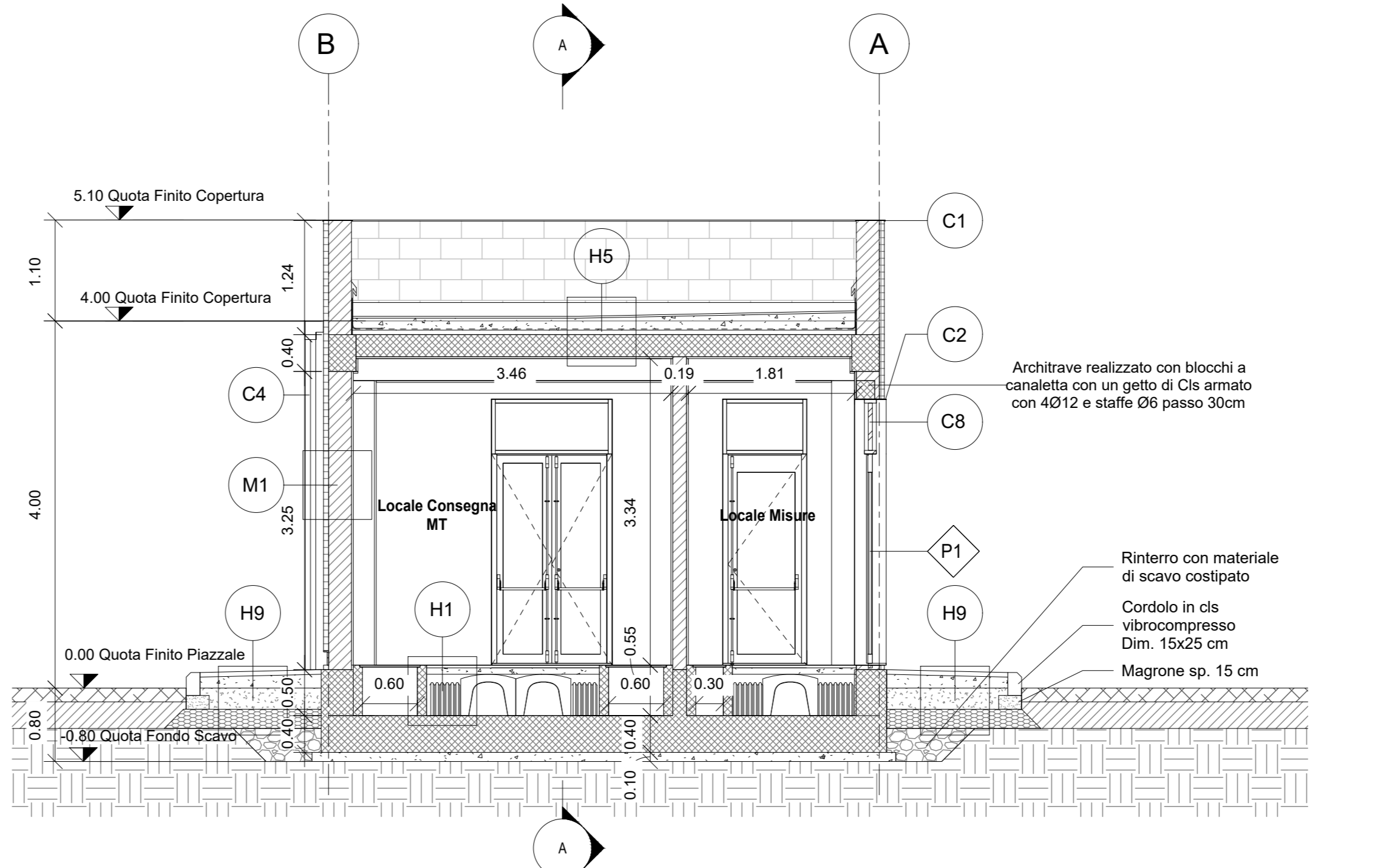
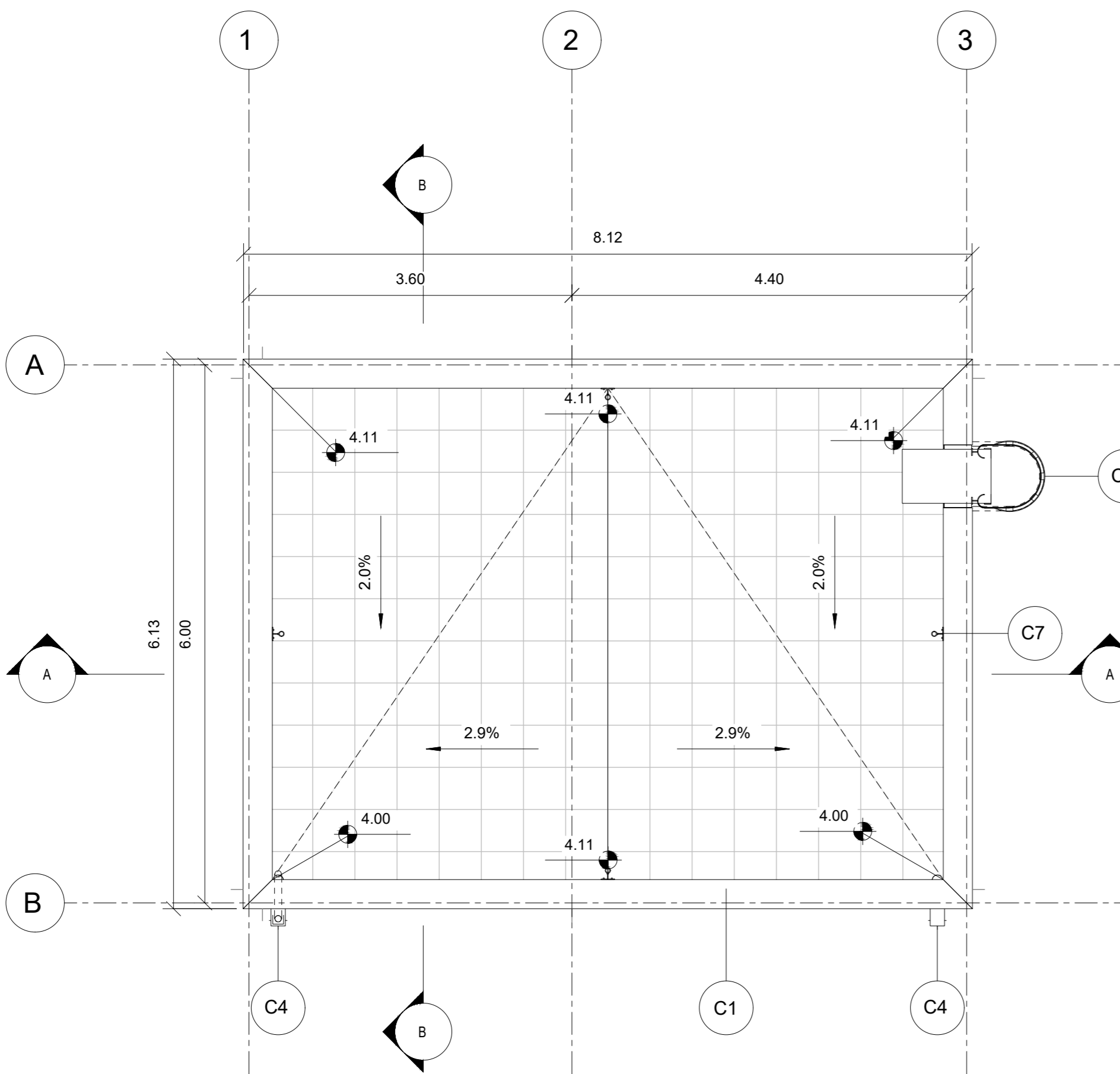
NOTE: Additional notes regarding material specifications and references to other documents.

Project metadata including: COMMITTENTE (RFI), PROGETTAZIONE (ITALFER), DIRETTRICE FERROVIARIA MESSINA - CATANIA - PALERMO, and project identification details.



Pianta Piano Terra
1: 50

Sezione A-A'
1: 50



Pianta Copertura
1: 50

Sezione B-B'
1: 50