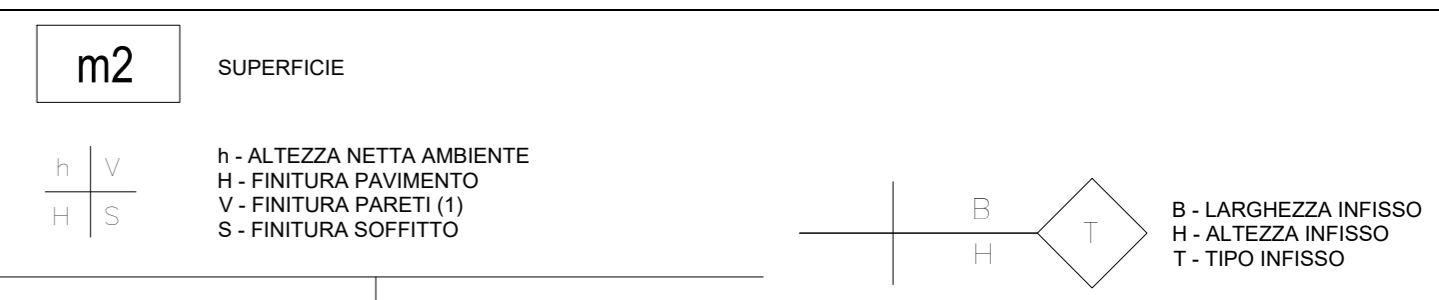


LEGENDA MATERIALI FINITURE

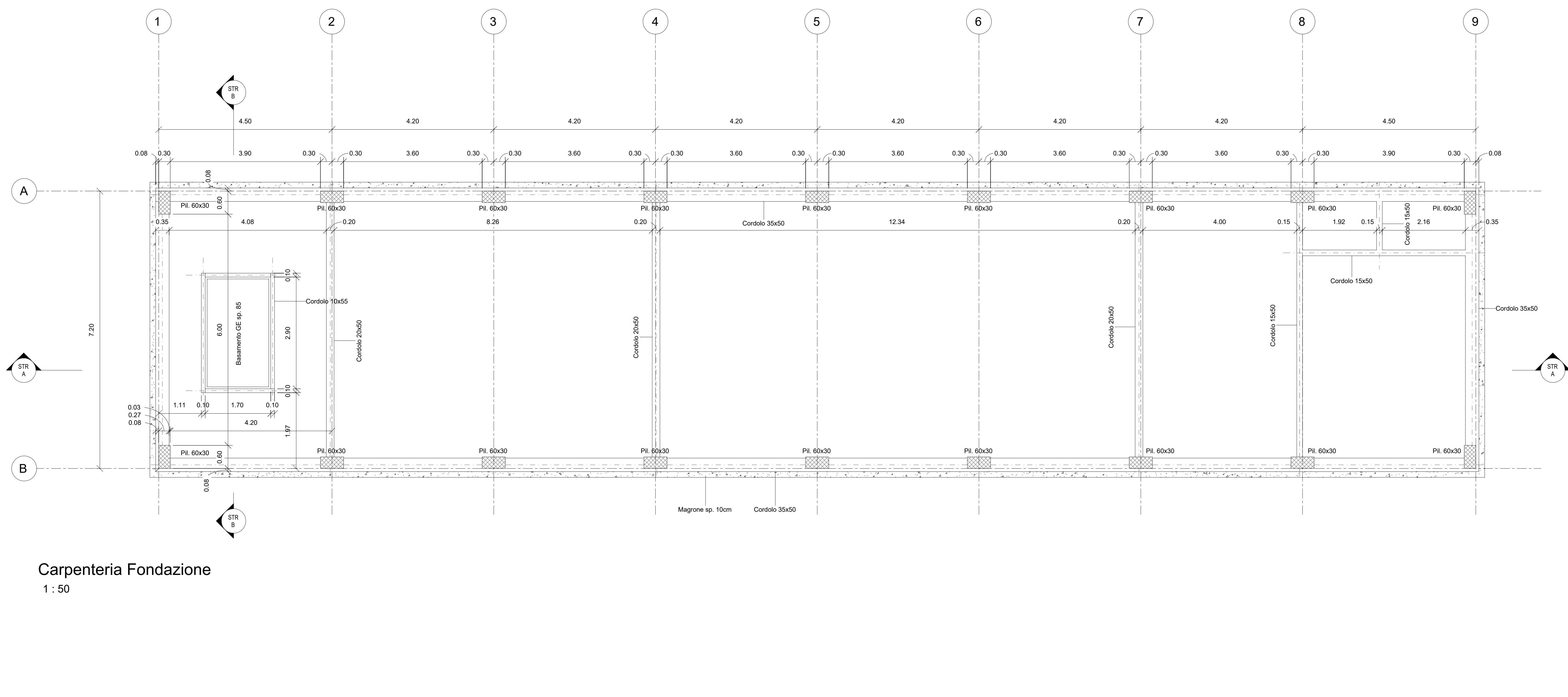
ABACO INTERVENTI ABACO INFISSI



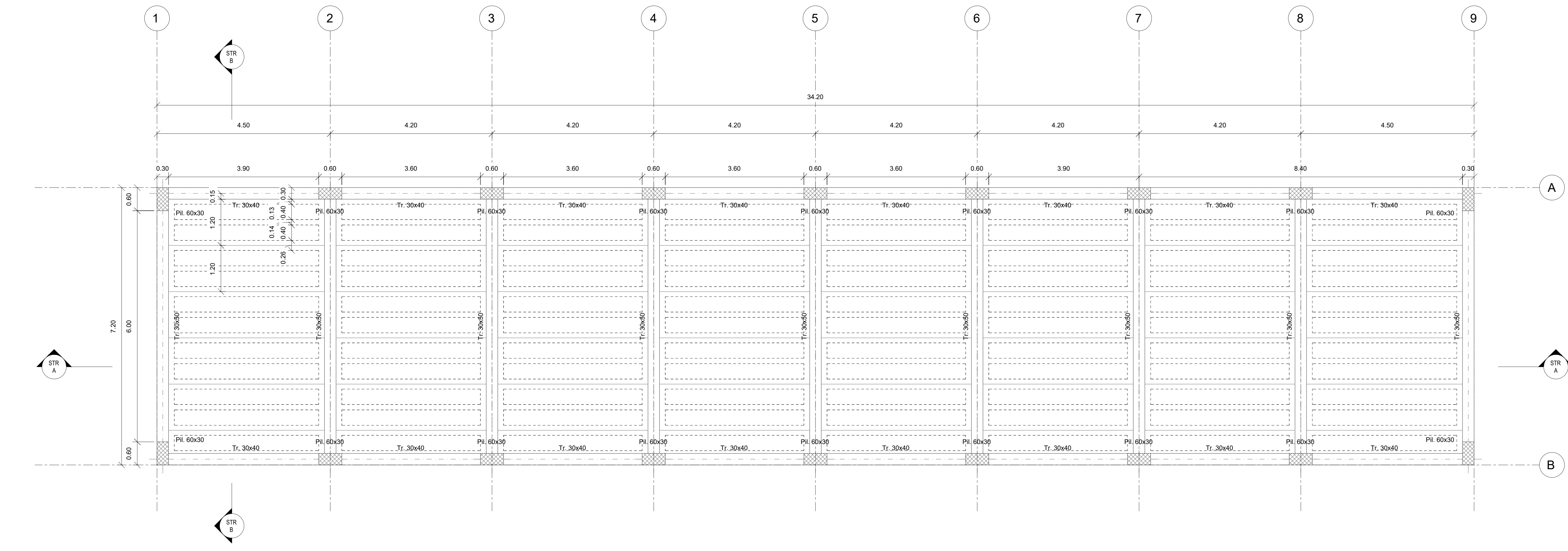
Legend text defining symbols: m2 SUPERFICIE, H - ALTEZZA NETTA AMBIENTE, V - FINITURA PAVIMENTO, S - FINITURA PARETI, B - LARGHEZZA INFISSO, L - ALTEZZA INFISSO, T - TIPO INFISSO.

Table with 2 columns: FINITURA PAVIMENTI and OPERE METALLICHE. Lists various construction materials and finishes with their corresponding codes (H1, H2, H3, H4, H5, H6, H7, H8, H9, H10, H11, M1, M2, M3, M3B, M4, M5, M6, S1, S2, S3, S4, V1, V2, V3, V4, V5).

NOTE section containing specific technical instructions and references to other documents.



Carpenteria Fondazione 1 : 50



Carpenteria Copertura 1 : 50

Project information block including: COMMITENTE (RFI), PROGETTAZIONE (ITALFER), DIRETTRICE FERROVIARIA MESSINA - CATANIA - PALERMO, NUOVO COLLEGAMENTO PALERMO - CATANIA, U.O. INFRASTRUTTURE CENTRO, PROGETTO DEFINITIVO, TRATTA CALTANISSETTA XIRBI - NUOVA ENNA (LOTTO 4A), FABBRICATI (Fabbicato IP-PP/ACC - Tipologico H), and a detailed revision table.