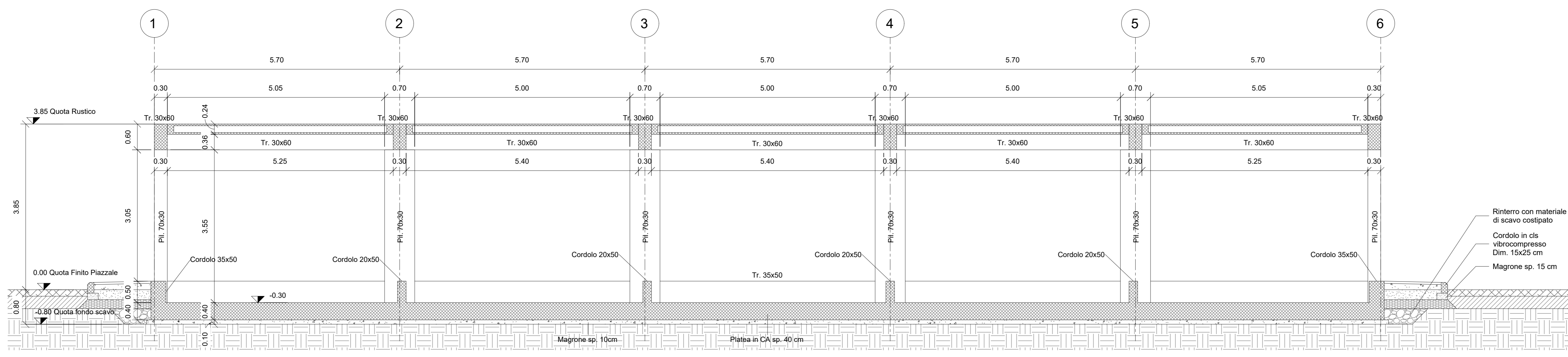
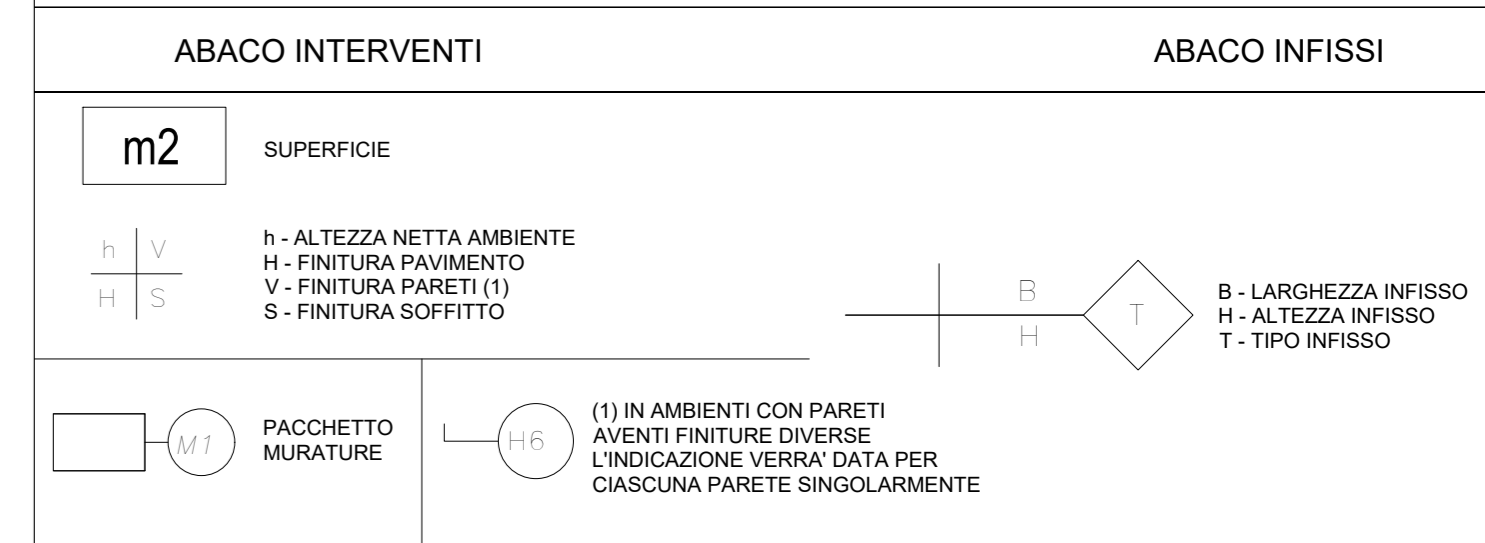
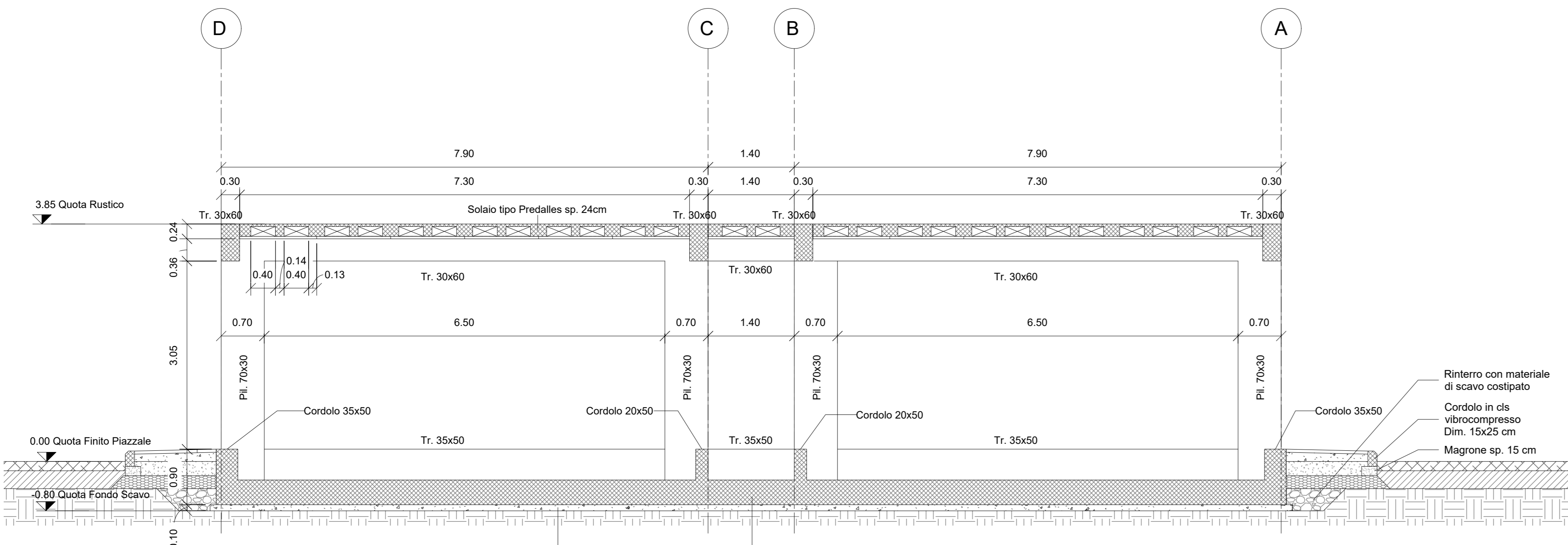


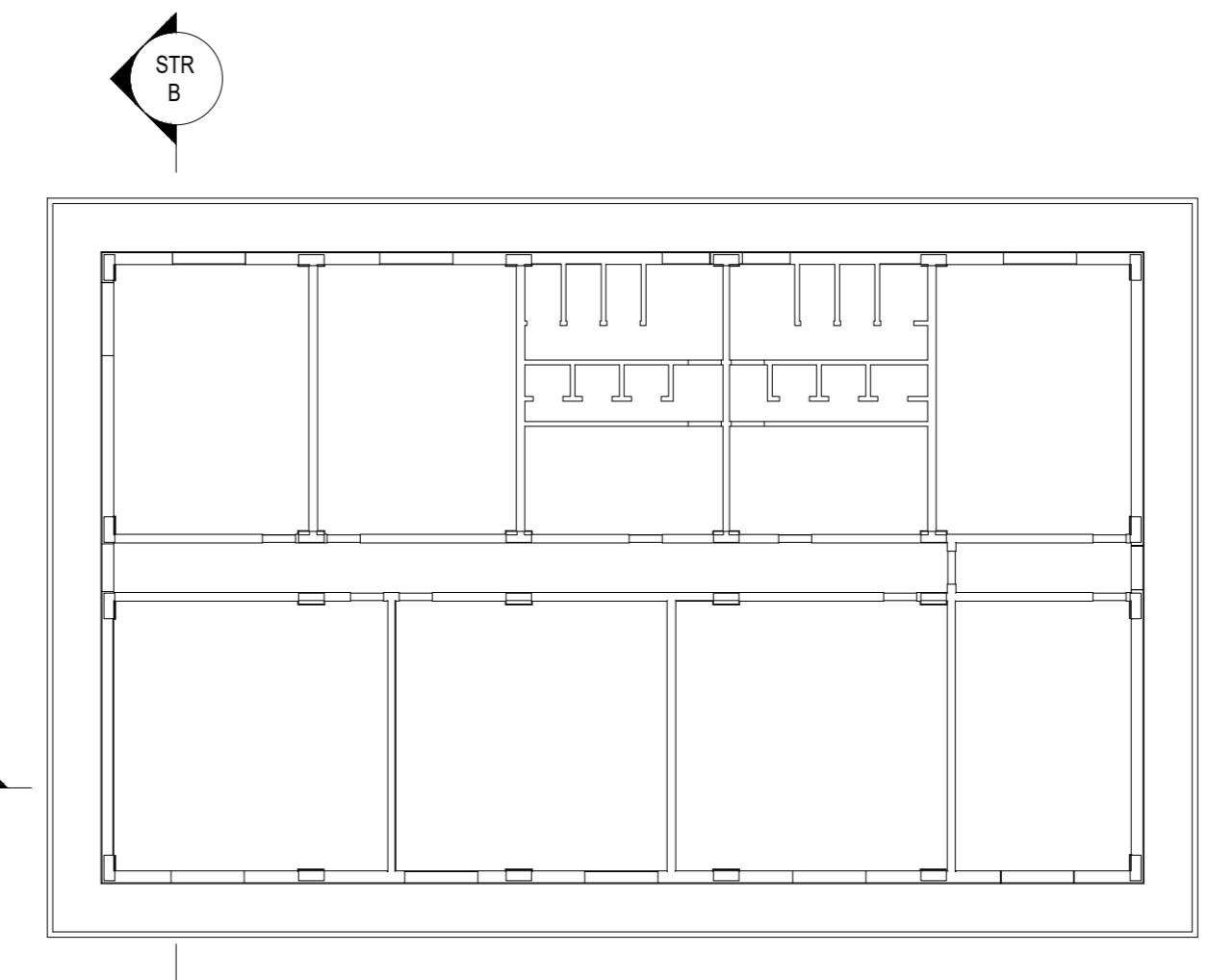
LEGENDA MATERIALI FINITURE



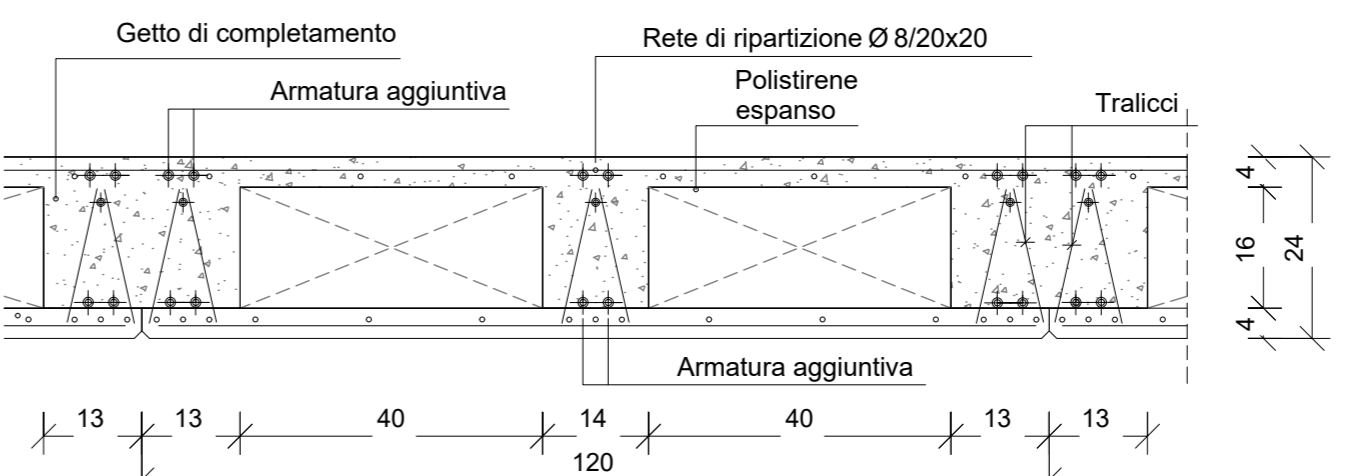
Sezione STR A-A' 1:50



Sezione STR B-B' 1:50



Keyplan 1:200



Sezione Solaio 1:10

Table of materials and finishes for various parts of the structure. Columns include item code (e.g., H1, H2, H3), description of the material/finish, and a reference to the relevant technical specification or standard.

NOTE: A specific list of notes and observations regarding the materials and finishes, including requirements for installation and compatibility.

N.B.: Per Tabella materiali Opere Civili fare riferimento all'elaborato RS3U.4.0.D.29.TT.OC.00.0.0.001. Per Tabella incisioni armature Opere Civili - Lotto 3a fare riferimento all'elaborato RS3U.4.0.D.29.TT.OC.00.0.0.002.

Header information for the project, including the client (COMMITTENTE) RFI Rete Ferroviaria Italiana Gruppo Ferrovie dello Stato Italiane, the design office (PROGETTAZIONE) ITALFERR, and the project name.

Project name: DIRETTRICE FERROVIARIA MESSINA - CATANIA - PALERMO. Specific project: NUOVO COLLEGAMENTO PALERMO - CATANIA.

Project phase: U.O. INFRASTRUTTURE CENTRO. Project status: PROGETTO DEFINITIVO.

Location: TRATTA CALTANISSETTA XIRBI - NUOVA ENNA (LOTTO 4A).

Contractor information: FABBRICATI Fabbricato FSA-UFFICI - Tipologico I. Carpenterie: Sezioni.

Scale: SCALA 1:50.

Table with columns: COMMESSA, LOTTO, FASE, ENTE, TIPO DOC., OPERA/DISCIPLINA, PROGR., REV. Row 1: RS3U 40 D 29 WB FA0010 002 B.

Revision table with columns: Rev., Descrizione, Redatto, Data, Verificato, Data, Approvato, Data, Autorizzato, Data. Rows include design and approval stages.