

IMPIANTO DI PRODUZIONE DI ENERGIA DA FONTE SOLARE
"ASCOLI SATRIANO MASSERIA SAN POTITO" - POTENZA NOMINALE IMPIANTO FOTOVOLTAICO 47,5 MVA
POTENZA NOMINALE SISTEMA DI ACCUMULO ENERGIA 90 MVA

REGIONE PUGLIA
PROVINCIA di FOGGIA
COMUNE di ASCOLI SATRIANO
Località: Masseria San Potito

PROGETTO DEFINITIVO
Id AU 82BKAH2

Tav.:

Titolo:

20

Schema Unifilare BTcc - BTca - MT
parco fotovoltaico

Scala:

Formato Stampa:

Codice Identificatore Elaborato

n.a.

A3

82BKAH2_ElaboratoGrafico_4_20

Progettazione:

Committente:

DOTT. ING. Fabio CALCARELLA

Via Bartolomeo Ravenna, 14 - 73100 Lecce
Mob. +39 340 9243575
fablo.calcarella@gmail.com - fablo.calcarella@ingpec.eu
P. IVA 04433020759

Whysol-E Sviluppo S.r.l.

Via Meravigli, 3 - 20123 - MILANO
Tel: +39 02 359605
Info@whysol.it - whysol-e.sviluppo@legalmail.it
P. IVA 10692360968



Fabio Calcarella

Data	Motivo della revisione:	Redatto:	Controllato:	Approvato:
Aprile 2020	Prima emissione	STC S.r.l.	FC	WHYSOL-E Sviluppo s.r.l.

SE Terna
"Deliceto"

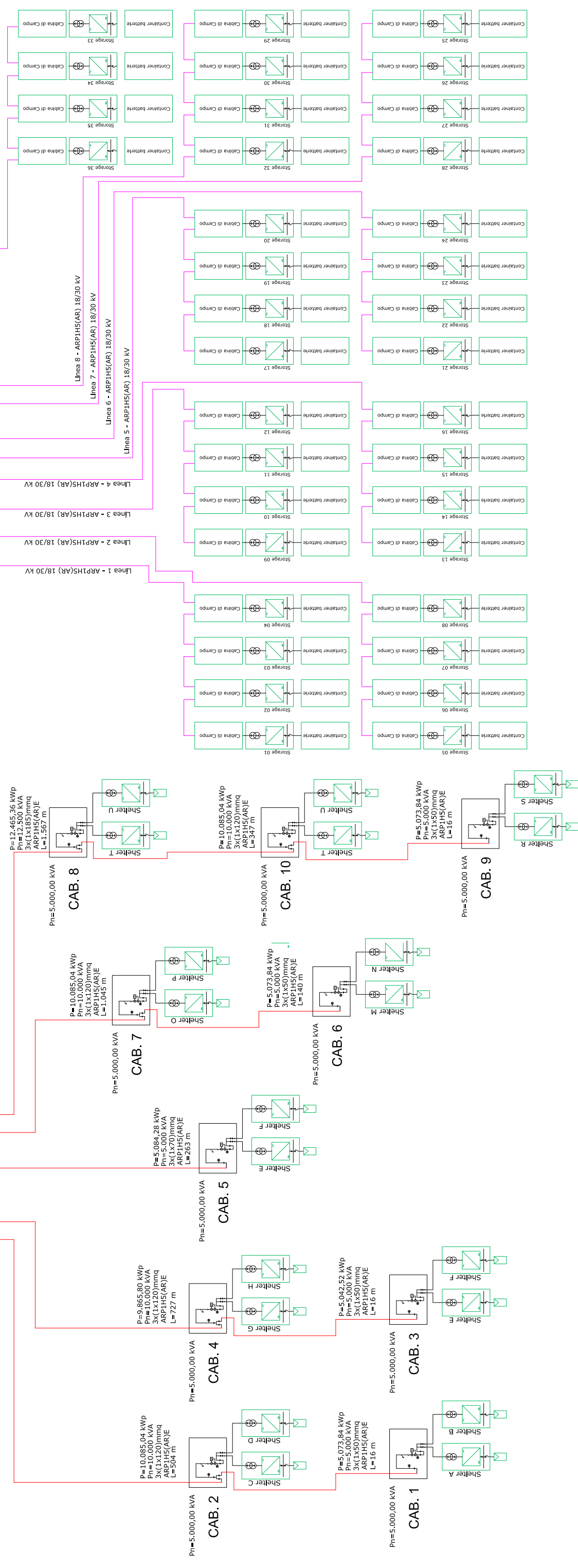
SSE Utente
"Elce"

SSE Utente
"Renoir"
30/150 kV

Cabina di Smistamento
(CdS)
30/30 kV

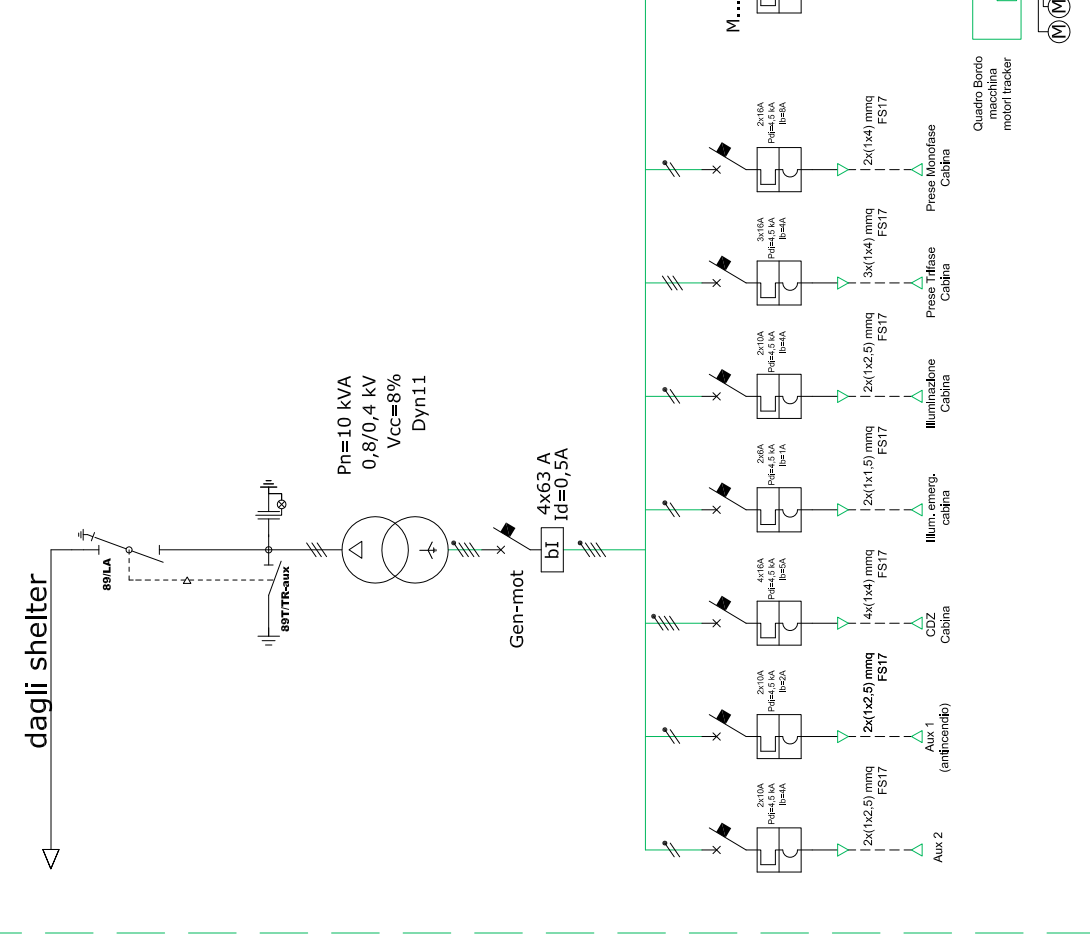
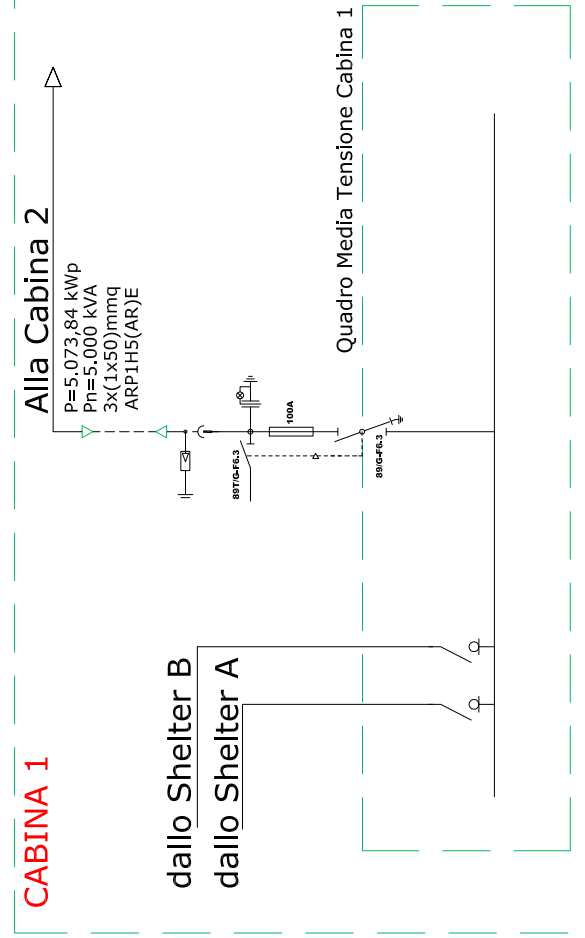
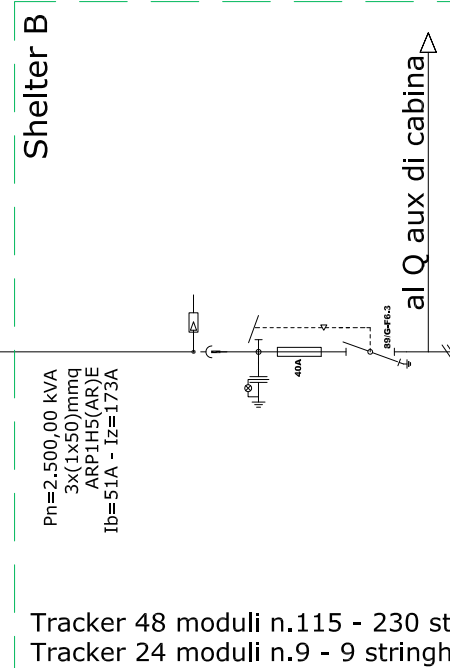
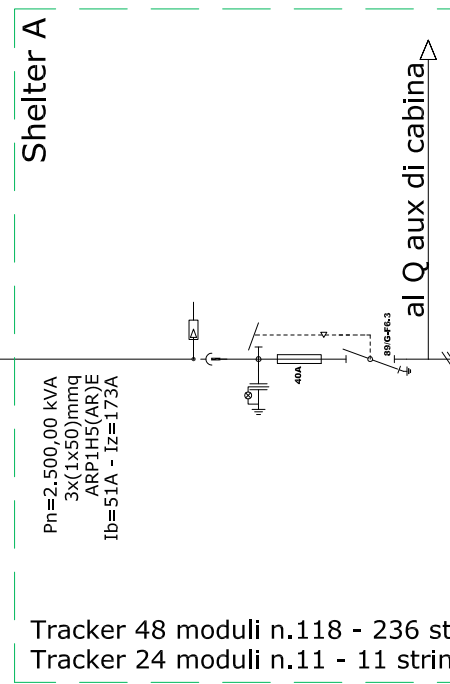
Cabina di Raccolta SdA
(CdR)
30/30 kV

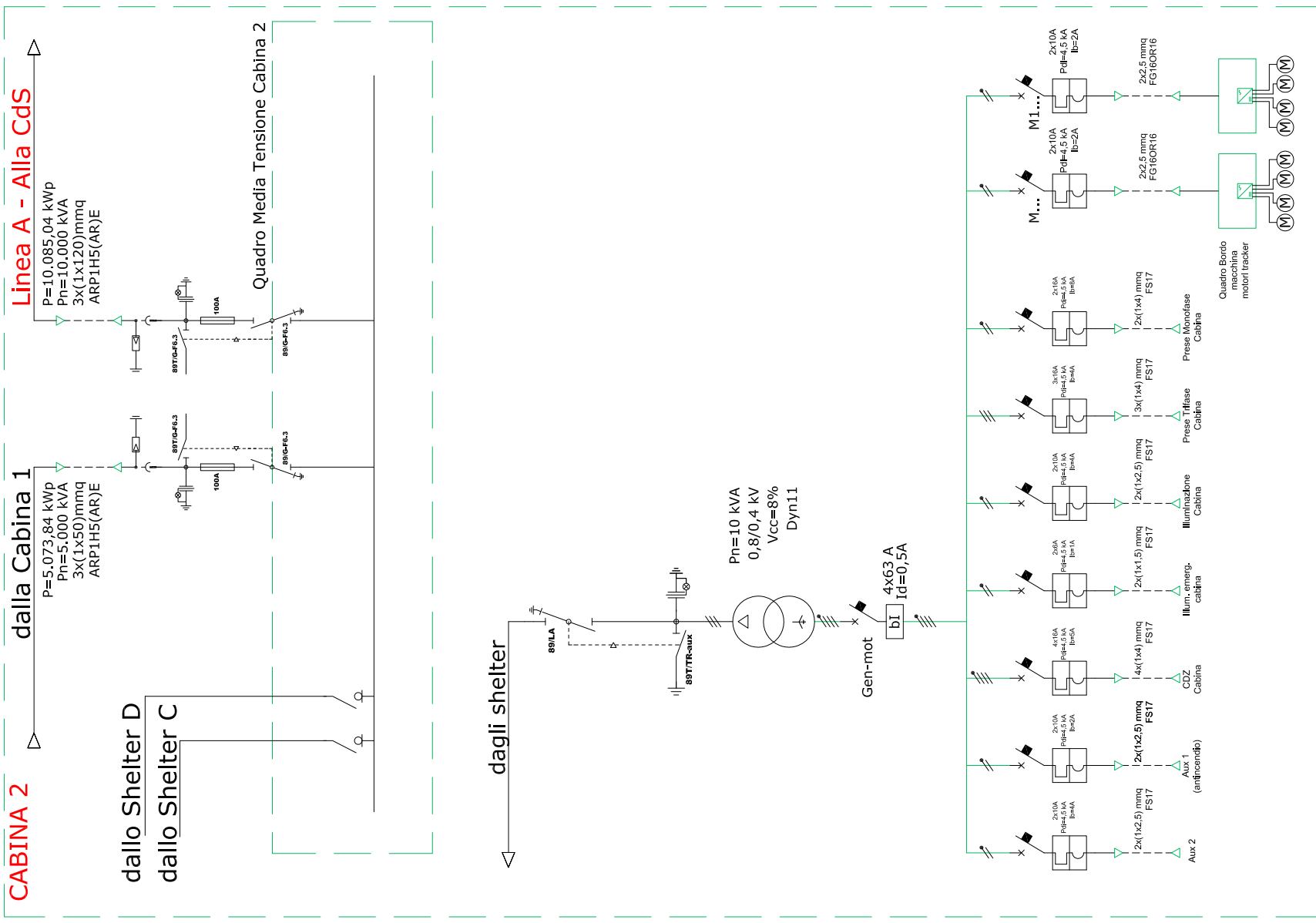
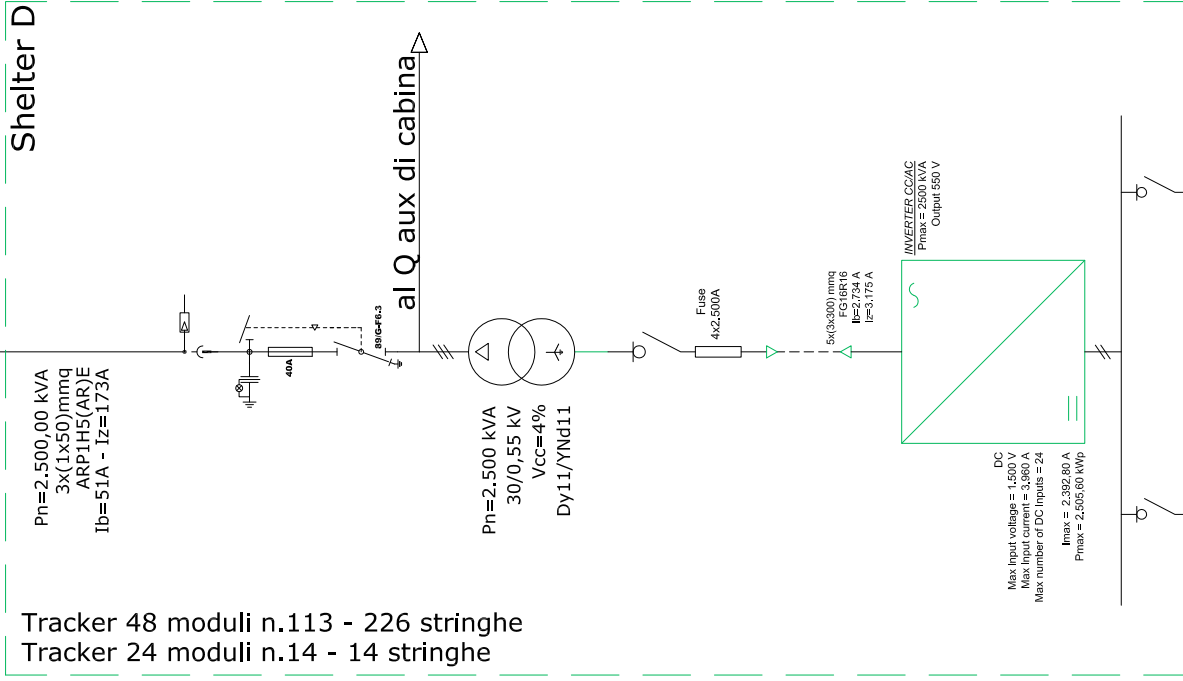
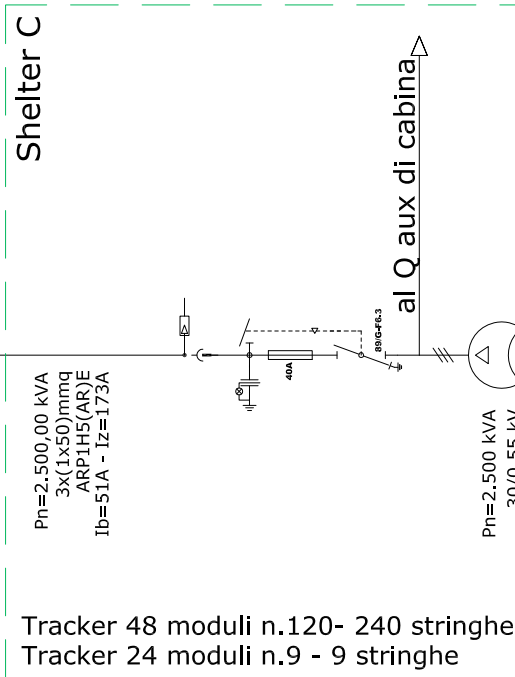
3x(1x500) mmq - ARP1H5(AR) 18/30 kV
3x(1x500) mmq - ARP1H5(AR) 18/30 kV
3x(1x500) mmq - ARP1H5(AR) 18/30 kV
3x(1x500) mmq - ARP1H5(AR) 18/30 kV



**Cab.1 - P=5.073,84 kW
Pn-Inverter=5.000 kVA**

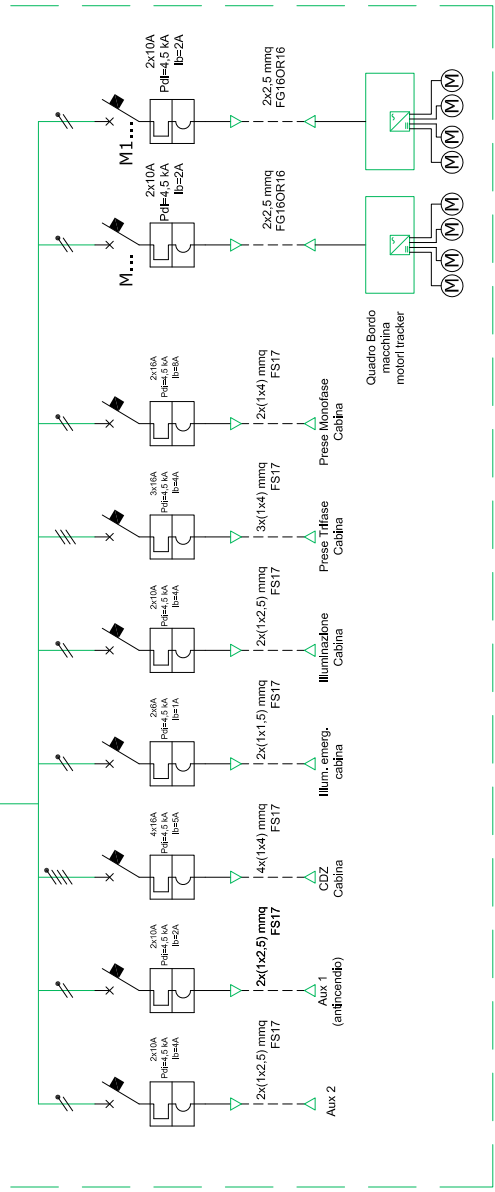
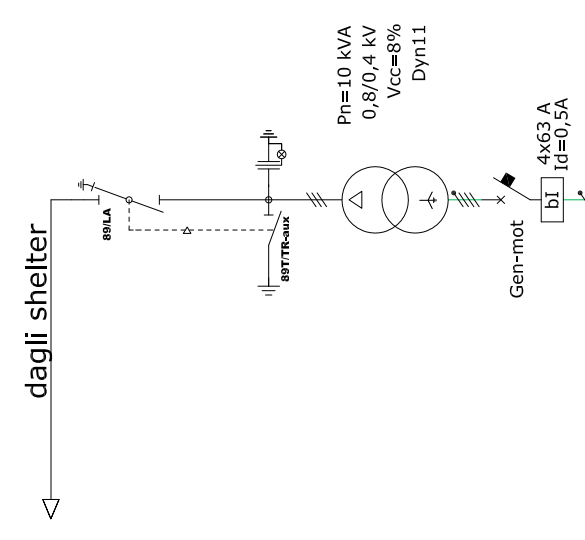
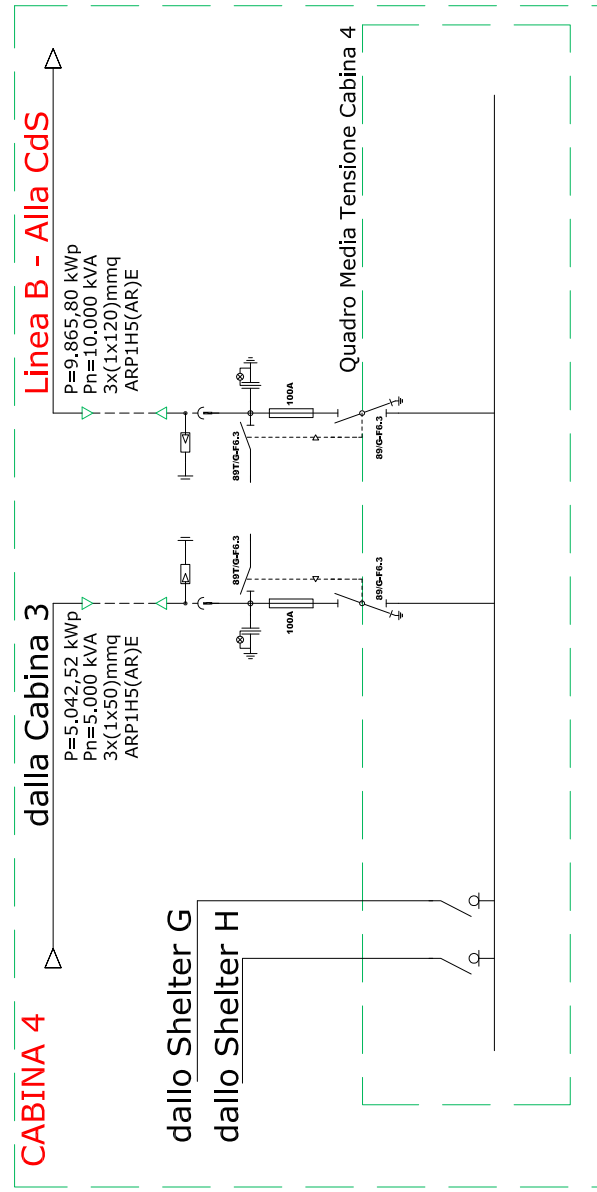
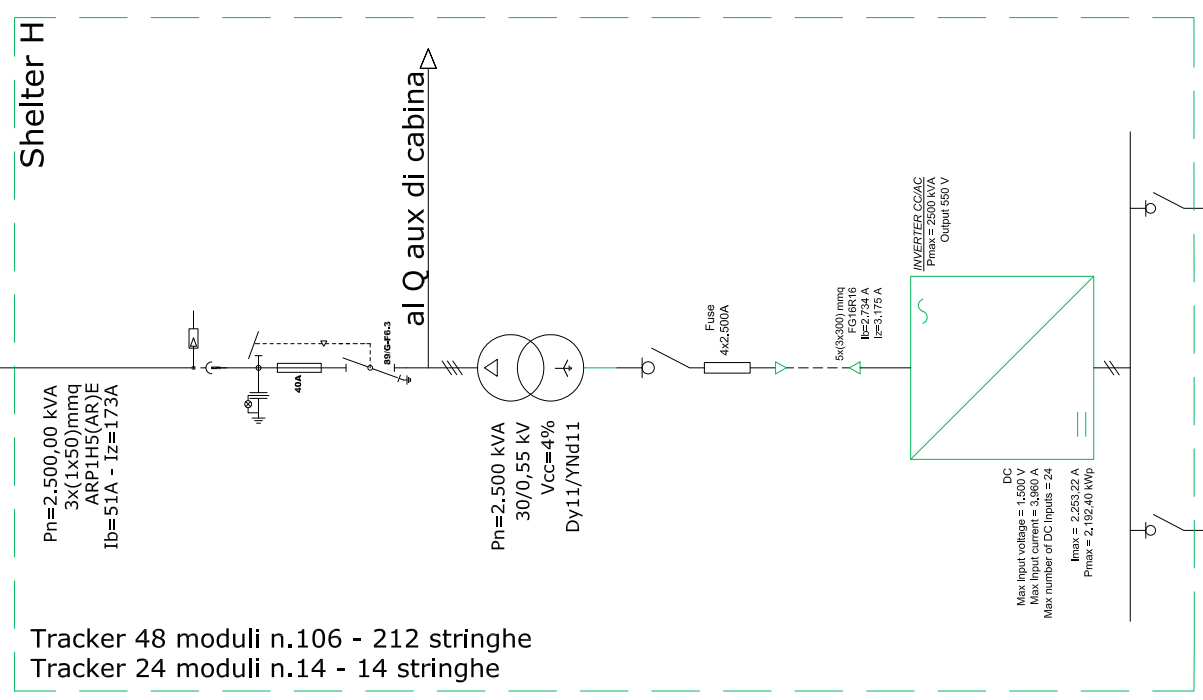
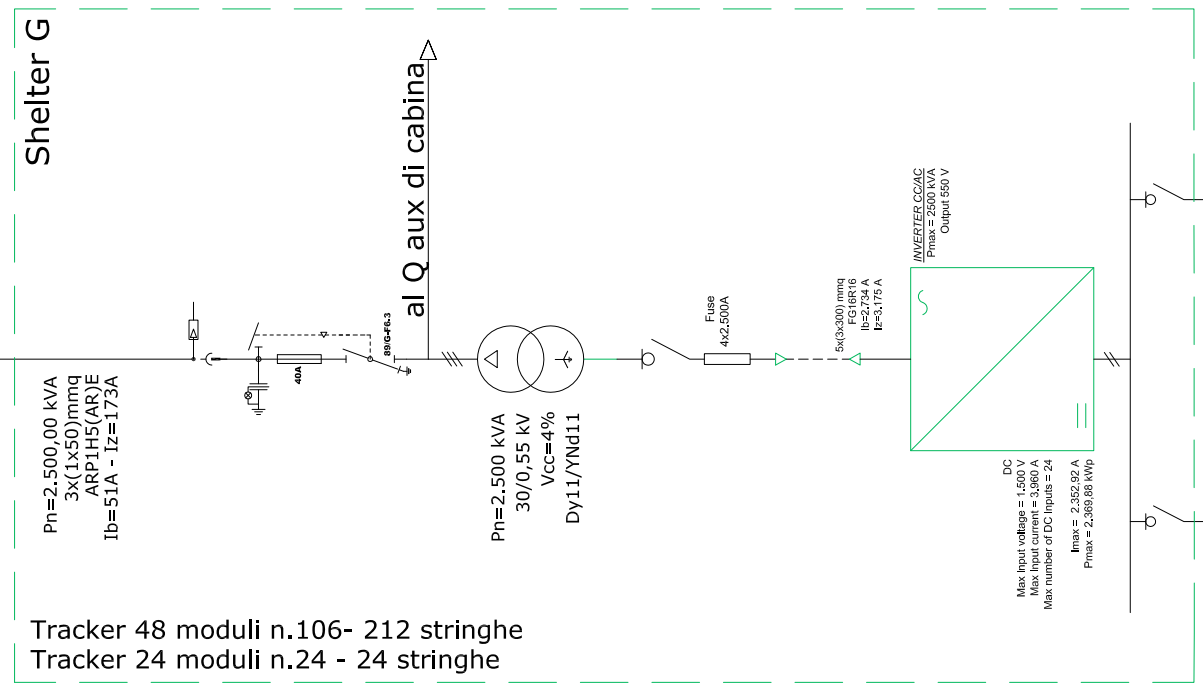
Alla Cab. 1



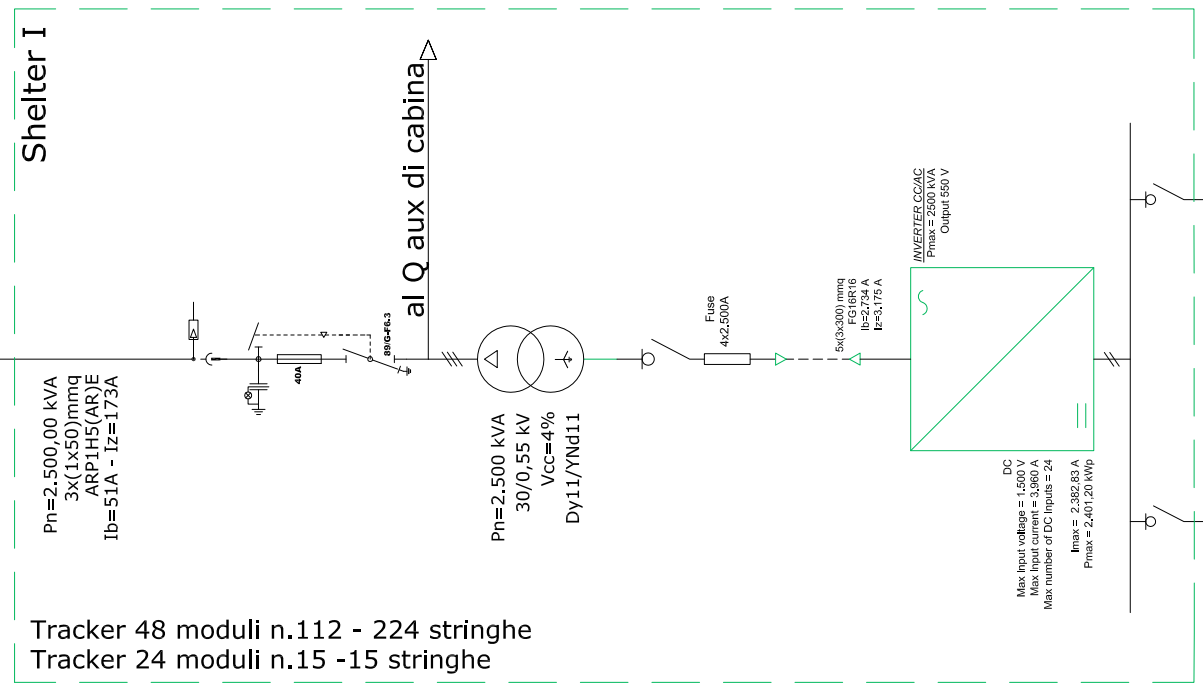


**Cab.4 - P=4.823,20 kW
Pn-Inverter=5.000 kVA**

Alla Cab. 4

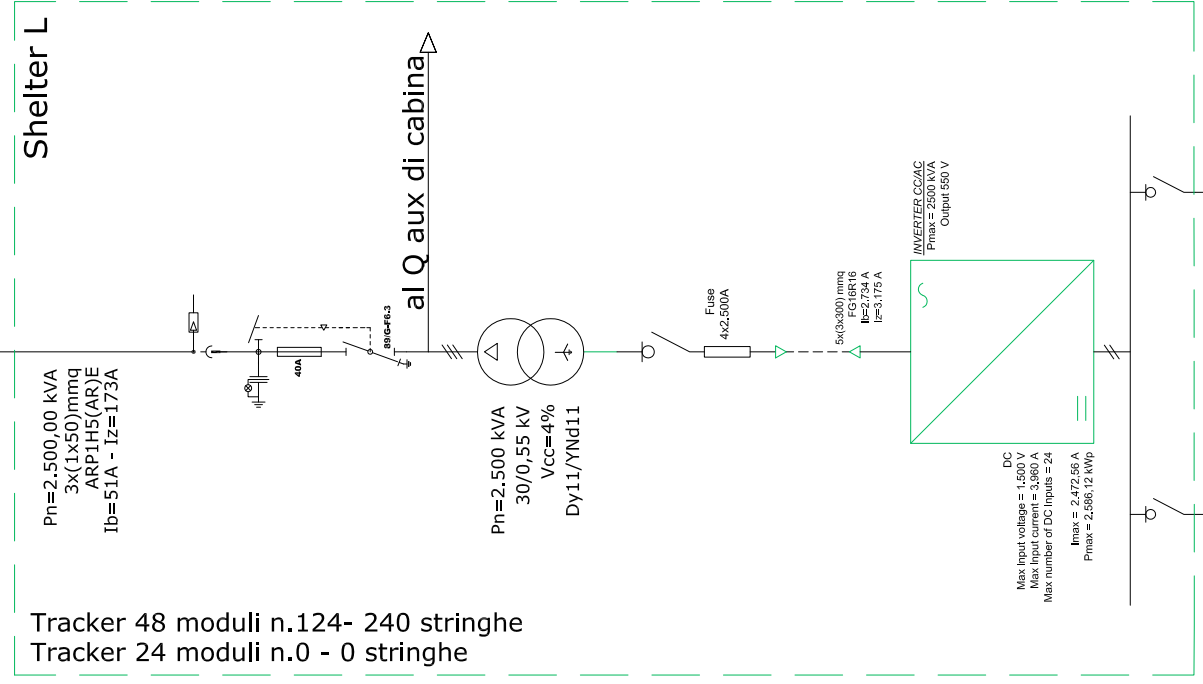


Alla Cab. 5

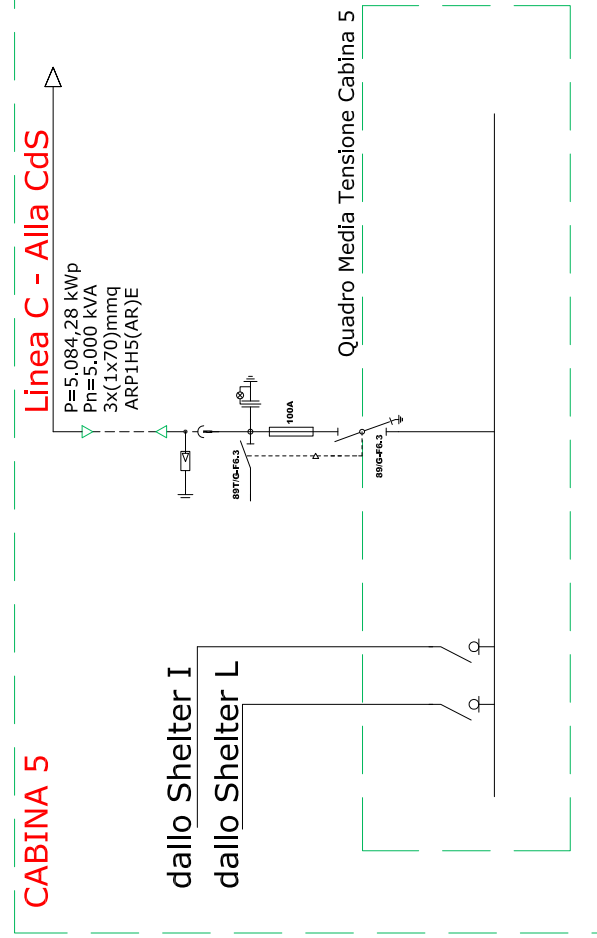


Tracker 48 moduli n.112 - 224 stringhe
Tracker 24 moduli n.15 - 15 stringhe

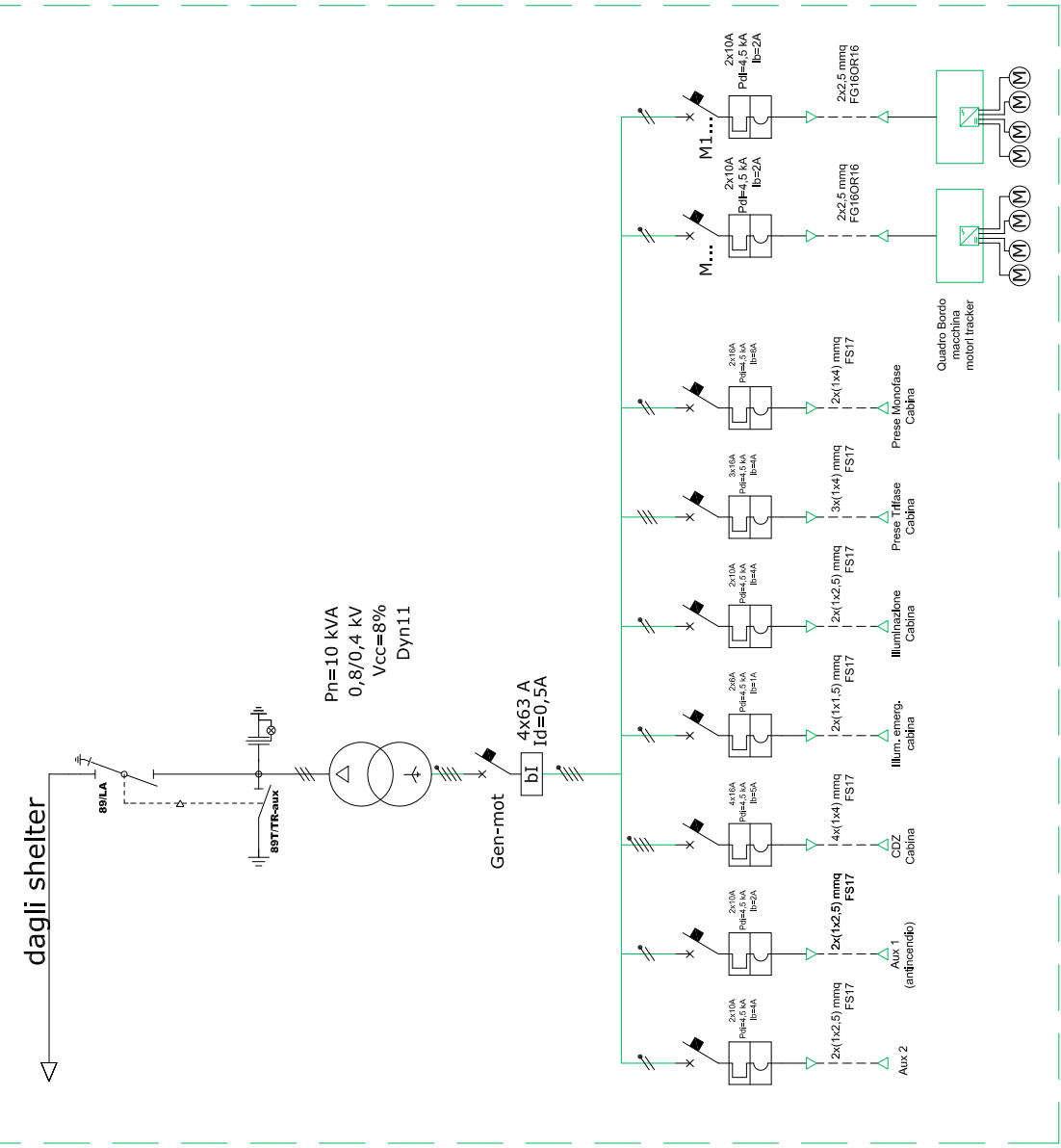
Alla Cab. 5



Tracker 48 moduli n.124- 240 stringhe
Tracker 24 moduli n.0 - 0 stringhe



dagli shelter



Alla Cab. 6

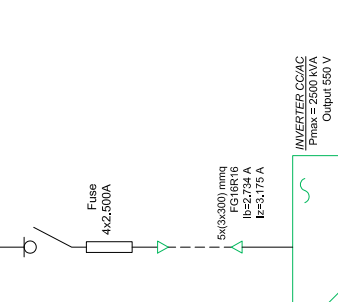
Shelter M

Pn=2.500,00 kVA
3x(1x50)mmq
ARP1H5(AR)E
Ib=51A - Iz=173A

Tracker 48 moduli n.112 - 224 stringhe
Tracker 24 moduli n.17 - 17 stringhe

al Q aux di cabina

Pn=2.500 kVA
30/0,55 kV
Vcc=4%
Dy11/YNd11



DC
Max input voltage = 1.500 V
Max input current = 3.960 A
Max number of DC inputs = 24
Imax = 2.402,77 A
Pnmax = 2.516,04 kWp

QUADRO DI STRINGA
Pnmax = 12 x 10,44 = 125,28 kWp
Imax = 9,97 x 12 = 119,64 A

GENERATORE FOTOVOLTAICO
Stringa 24 moduli n.17
Pnmax stringa 245,85 kWp
V max stringa = 52,5 V
V max modulo = 1,260 V
Imax modulo = 9,97 A

Alla Cab. 6

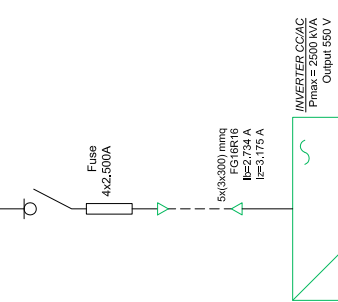
Shelter N

Pn=2.500,00 kVA
3x(1x50)mmq
ARP1H5(AR)E
Ib=51A - Iz=173A

Tracker 48 moduli n.104 - 208 stringhe
Tracker 24 moduli n.28 - 28 stringhe

al Q aux di cabina

Pn=2.500 kVA
30/0,55 kV
Vcc=4%
Dy11/YNd11



DC
Max input voltage = 1.500 V
Max input current = 3.960 A
Max number of DC inputs = 24
Imax = 2.352,92 A
Pnmax = 2.296,90 kWp

QUADRO DI STRINGA
Pnmax = 12 x 10,44 = 125,28 kWp
Imax = 9,97 x 12 = 119,64 A

GENERATORE FOTOVOLTAICO
Stringa 24 moduli n.28
Pnmax stringa 245,85 kWp
V max stringa = 52,5 V
V max modulo = 1,260 V
Imax modulo = 9,97 A

CABINA 6

dallo Shelter M
dallo Shelter N

Alla Cabina 7

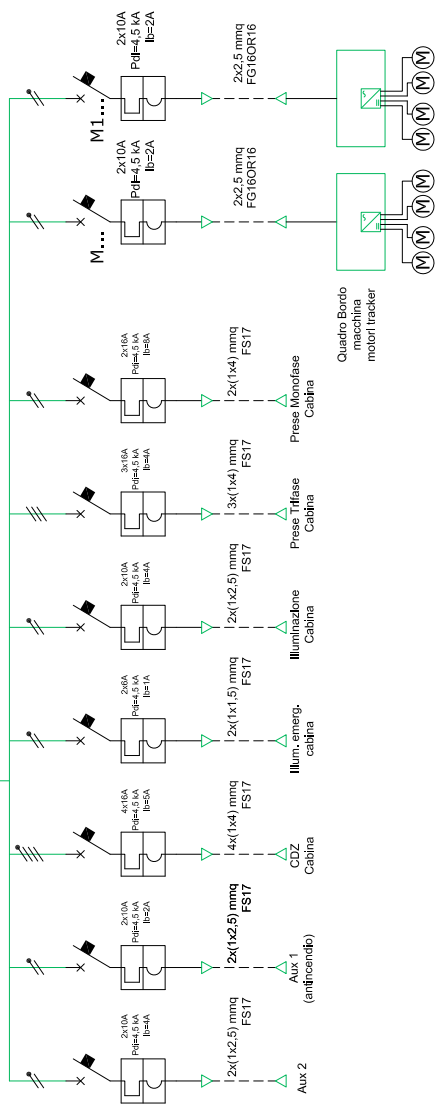
P=5.073,84 kWp
Pn=5.000 kVA
3x(1x50)mmq
ARP1H5(AR)E

Quadro Media Tensione Cabina 6

dagli shelter

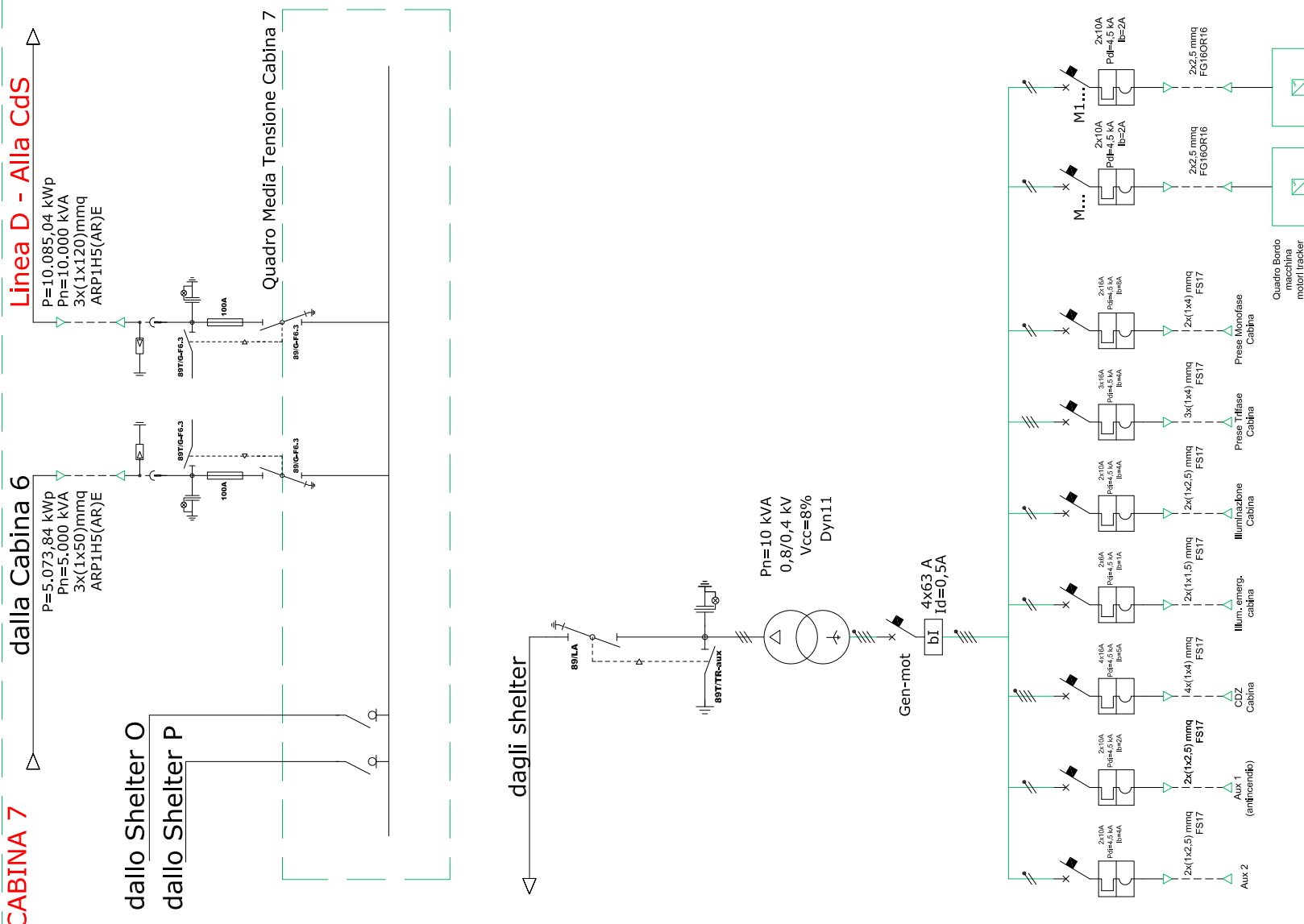
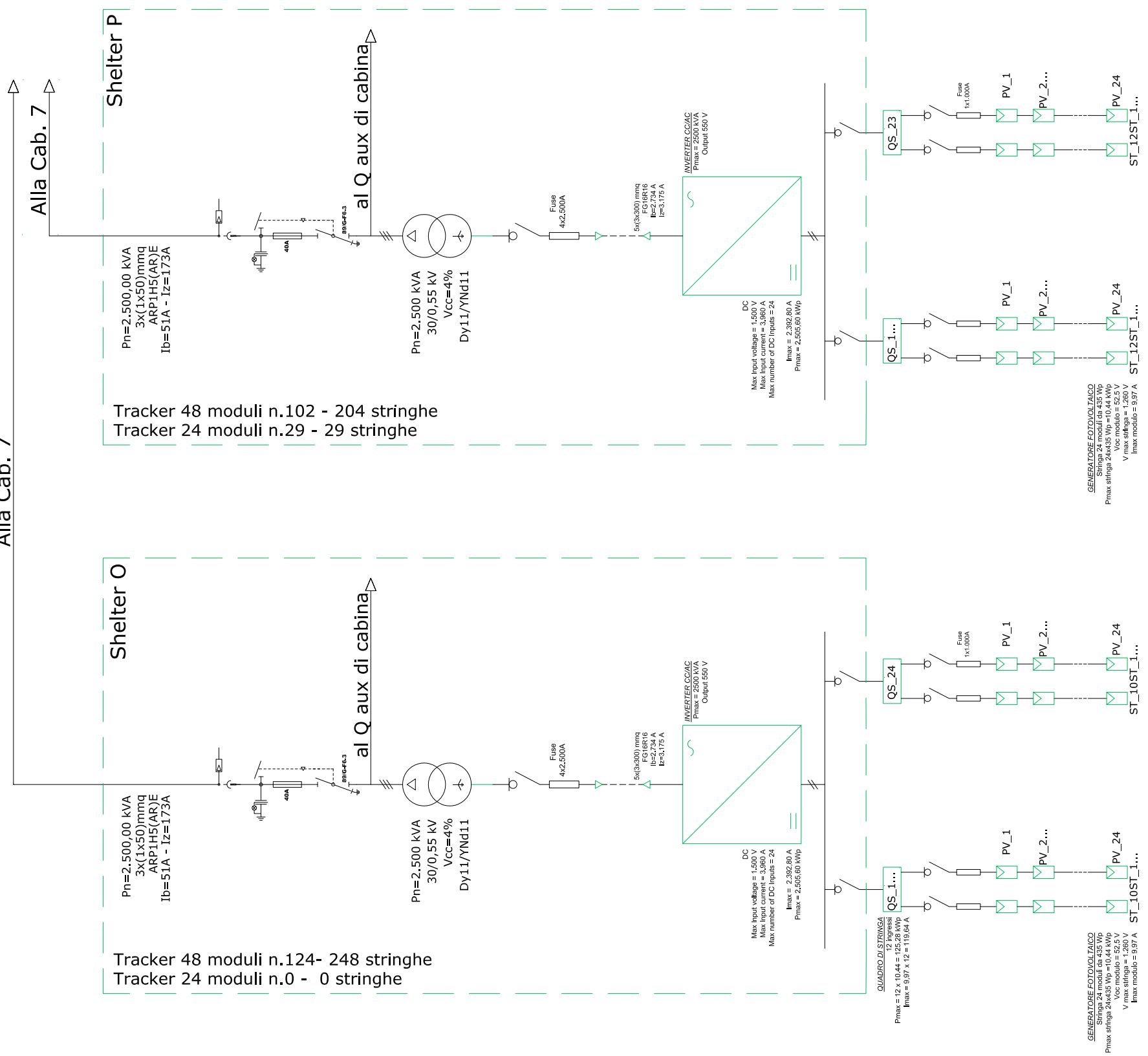
Pn=10 kVA
0,8/0,4 kV
Vcc=8%
Dy11

Gen-mot
4x63 A
Id=0,5A



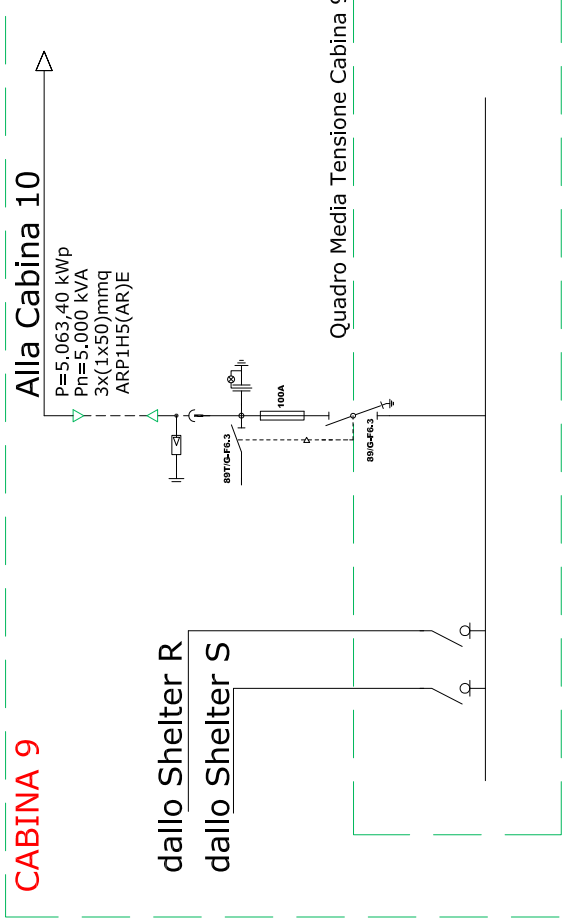
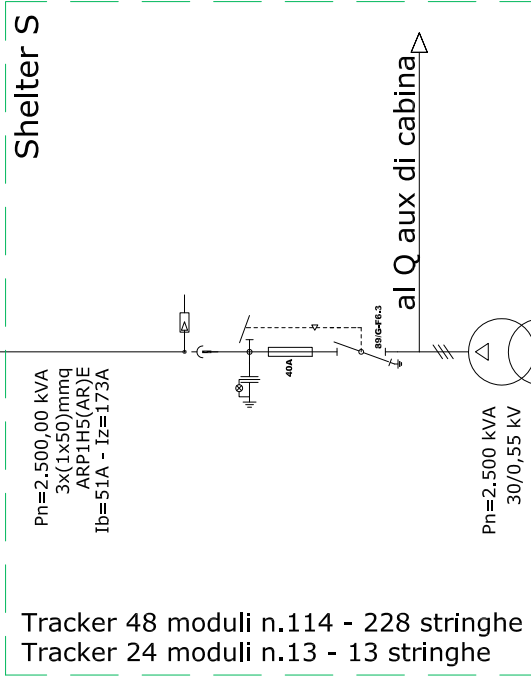
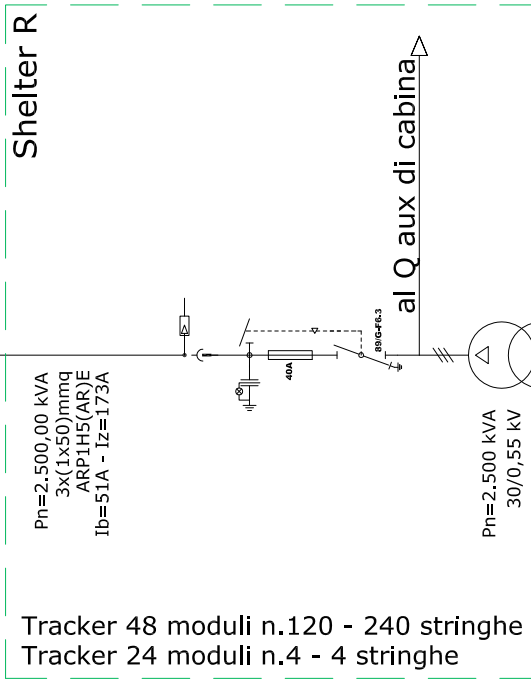
Cab.7 - P=5.021,64 kW
Pn-Inverter=5.000 kVA

Alla Cab. 7

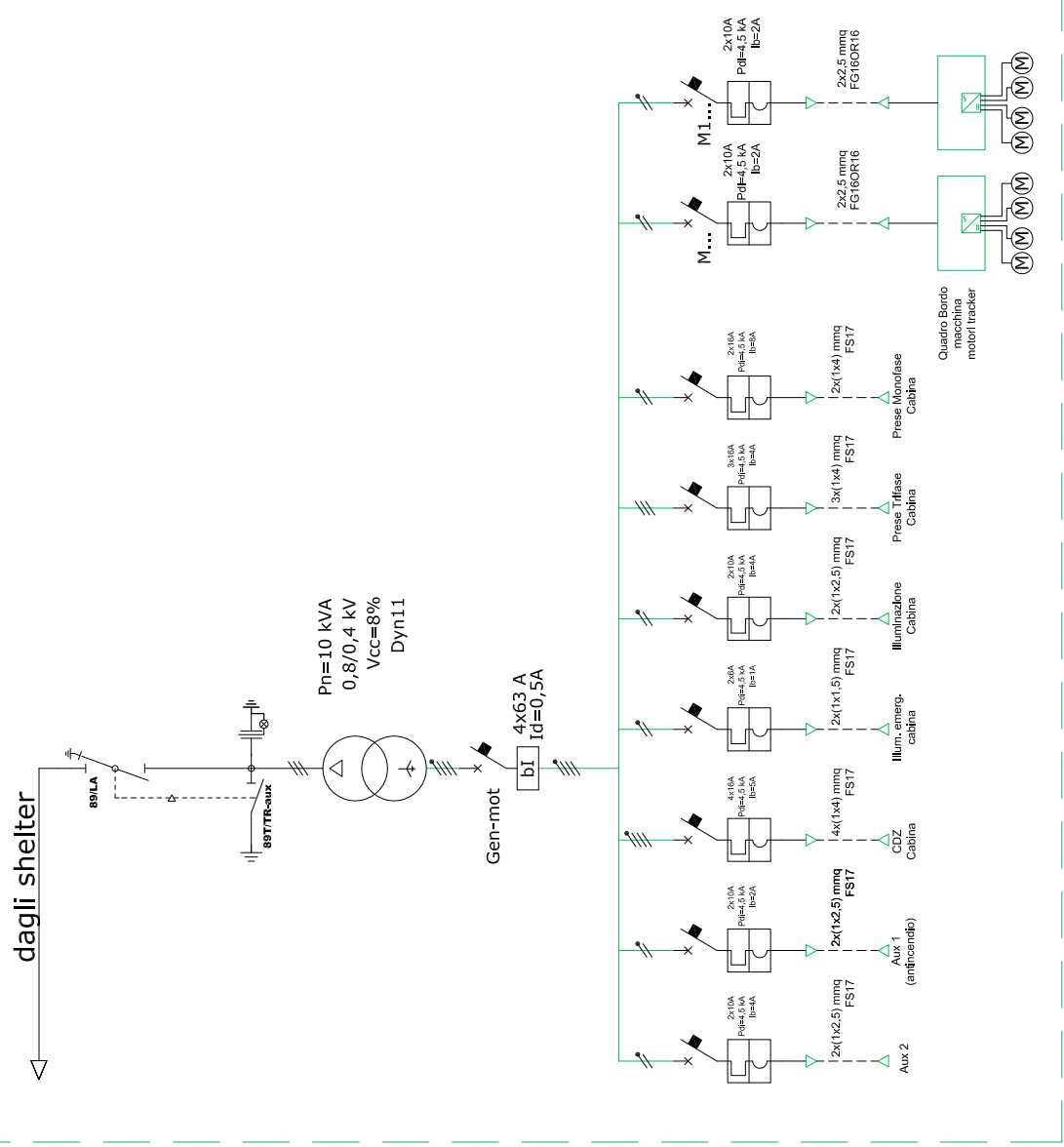


**Cab.9 - P=5.063,40 kW
Pn-Inverter=5.000 kVA**

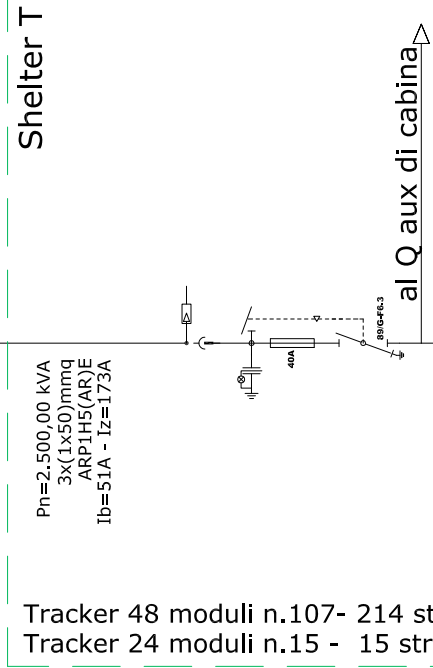
Alla Cab. 9



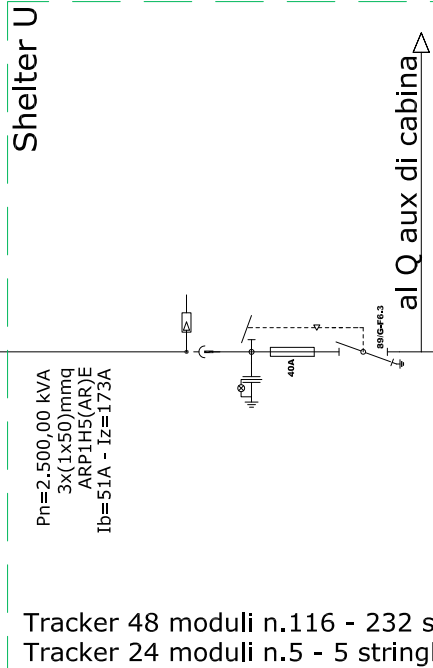
dagli shelter



Alla Cab. 10

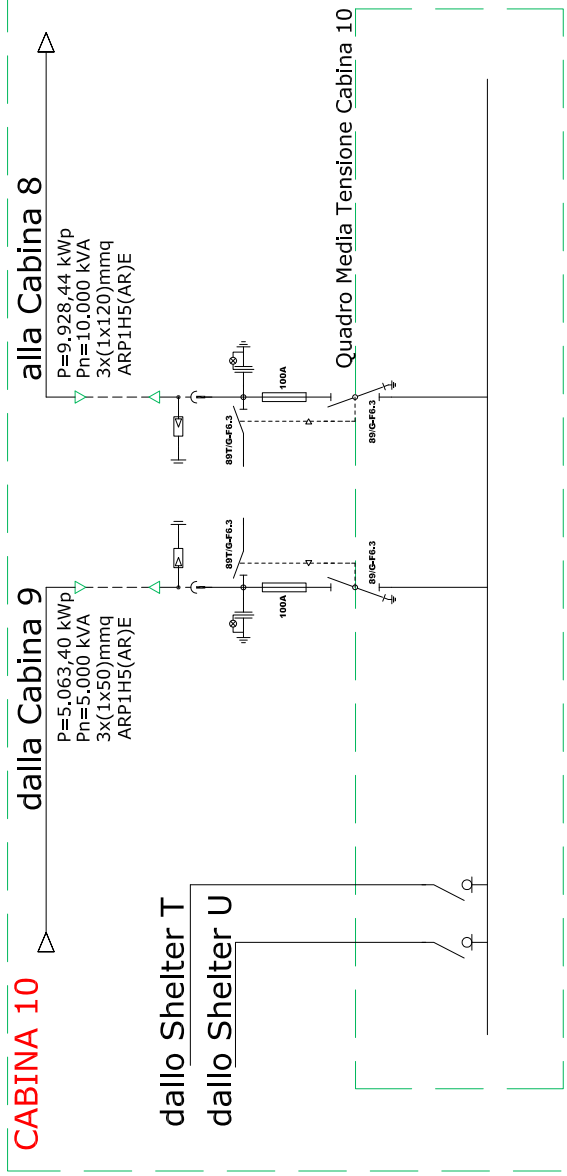


Tracker 48 moduli n.107- 214 stringhe
Tracker 24 moduli n.15 - 15 stringhe

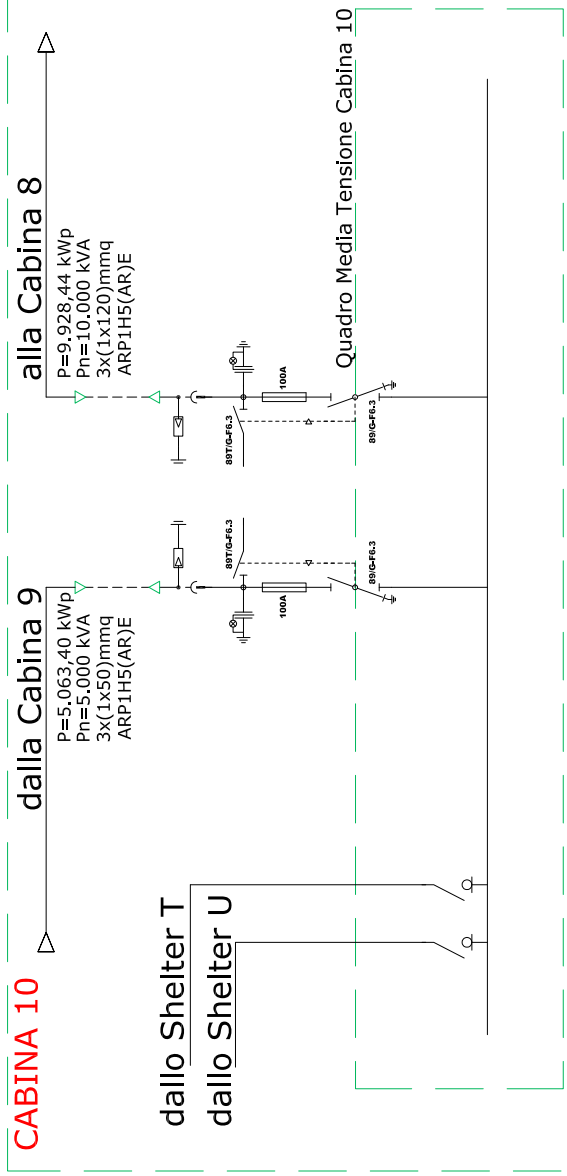


Tracker 48 moduli n.116 - 232 stringhe
Tracker 24 moduli n.5 - 5 stringhe

Alla Cab. 10



dallo Shelter T
dallo Shelter U



dallo Shelter T
dallo Shelter U

dagli shelter

