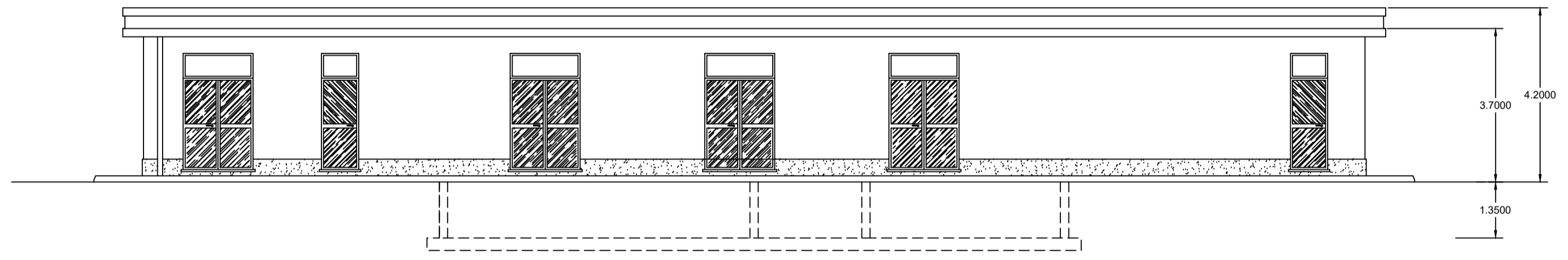
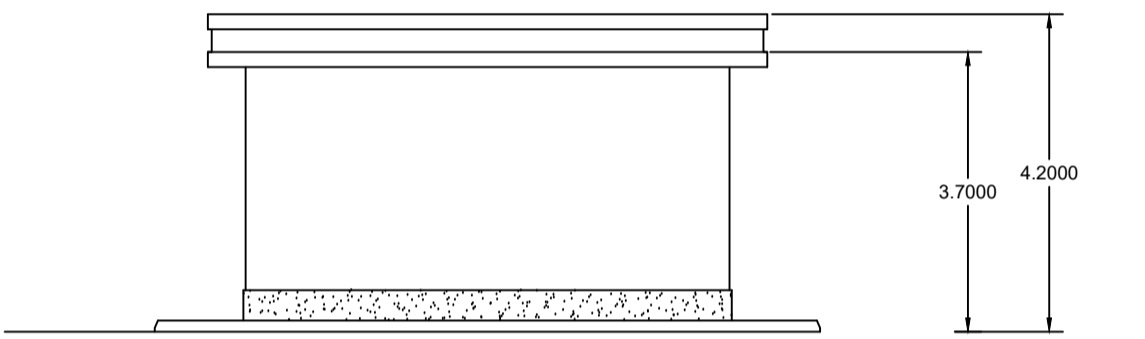


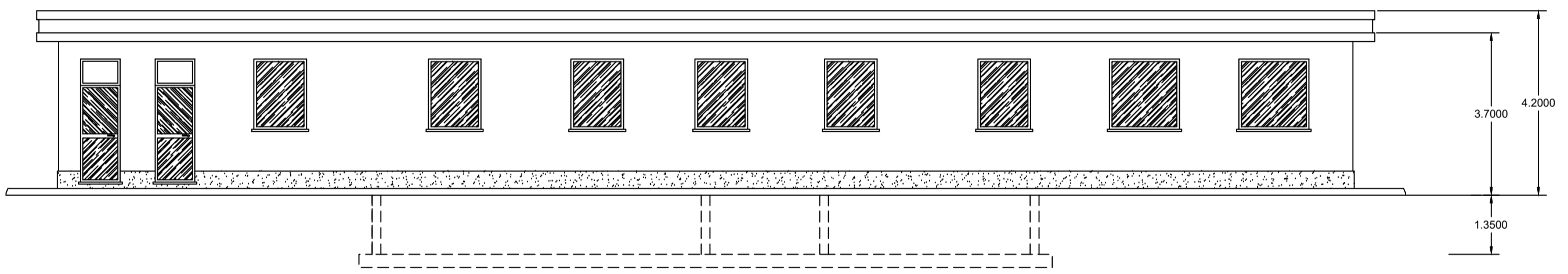
Prospetto C - C



Prospetto A - A



Prospetto D - D



Prospetto B - B

01	02/07/2021	Emissione finale	SCS Ingegneria V. Decarolis	SCS Ingegneria S. Miccoli	SCS Ingegneria A. Sergi
00	01/02/2021	Emissione	SCS Ingegneria V. Decarolis	SCS Ingegneria S. Miccoli	SCS Ingegneria A. Sergi
REV.	DATE	DESCRIPTION	PREPARED	CHECKED	APPROVED
			<b>PROGETTO:</b> <b>IMPIANTO EOLICO DELLA POTENZA COMPLESSIVA 48 MW,</b> <b>COMUNE DI SERRACAPRIOLA (FG)</b>		
			<b>FILE NAME:</b> GRE.EEC.D.24.IT.W.15228.00.089.01		
<b>CLASSIFICATION:</b> <b>WIND FARM</b>		<b>FORMAT:</b> <b>A1</b>	<b>SCALE:</b> <b>1:500</b>	<b>PLOT SCALE:</b> <b>1:1</b>	<b>SHEET:</b> <b>1 di 1</b>
<b>UTILIZATION SCOPE:</b> <b>Iter Autorizzativo</b>		<b>TITLE:</b> <b>PIANTA, PROSPETTI, SEZIONI EDIFICIO SOTTOSTAZIONE</b>			
<b>VALIDATION</b>					
<b>VALIDATED BY:</b> <b>E. Pansini</b>		<b>CODE</b>			
<b>VERIFIED BY:</b> <b>Provasi</b>		<b>GROUP FUNCTION TYPE ISSUER COUNTRY TEC. PLANT SYSTEM PROGRESSIVE REVISION</b>			
<b>COLLABORATORS:</b> <b>Support Team</b>		<b>GRE EEC D 24 IT W 15228 00 089 01</b>			