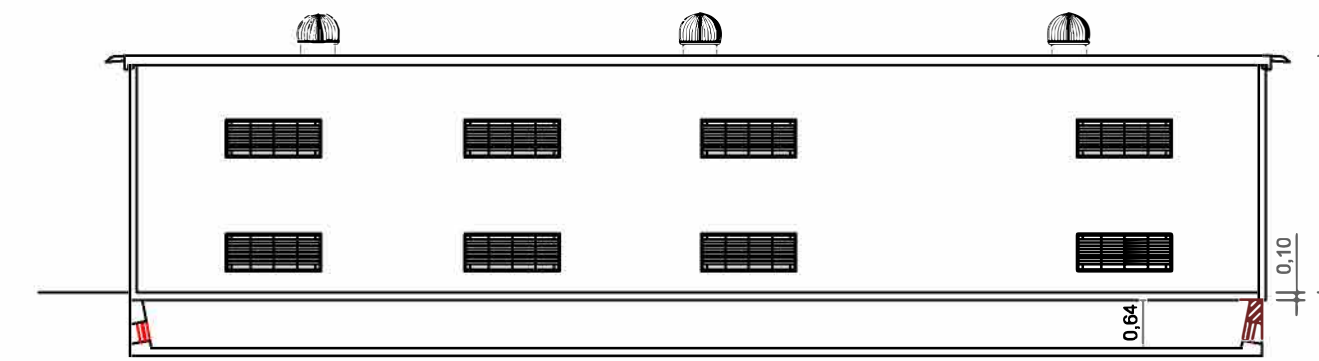
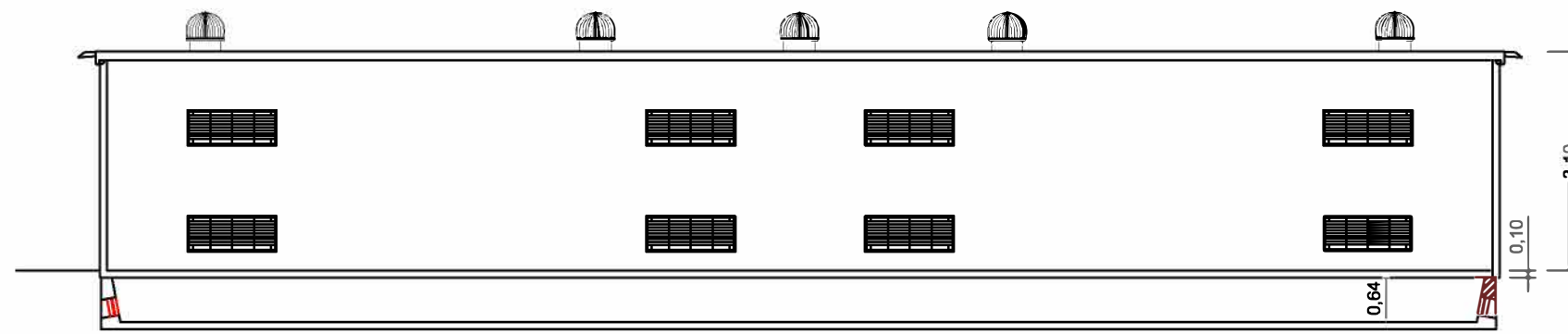
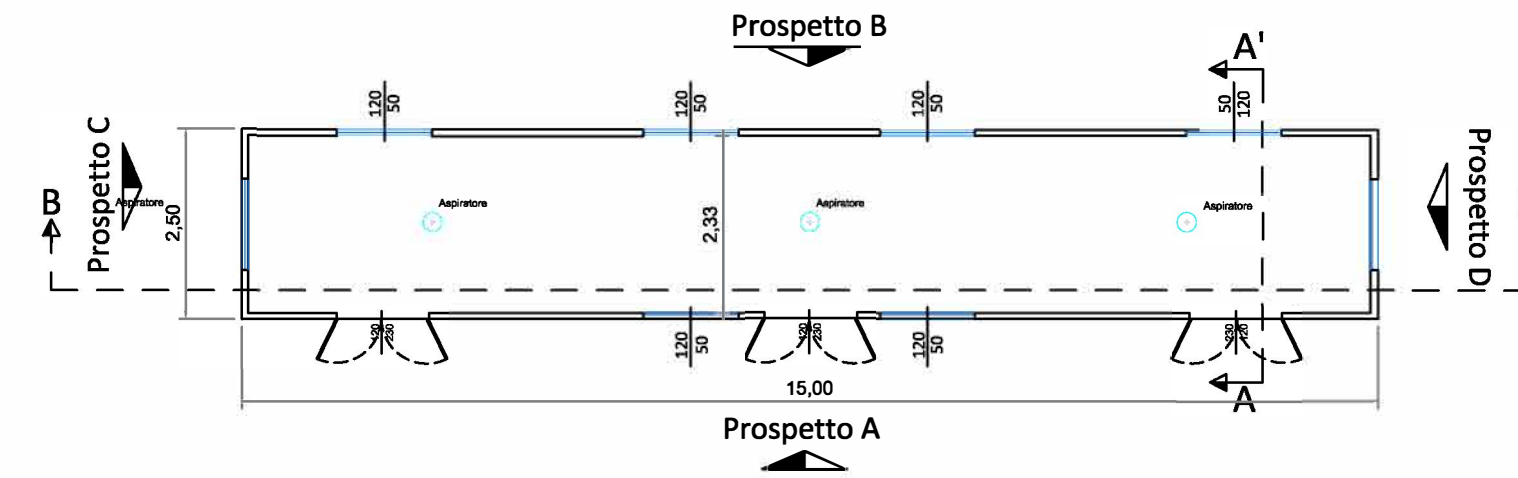
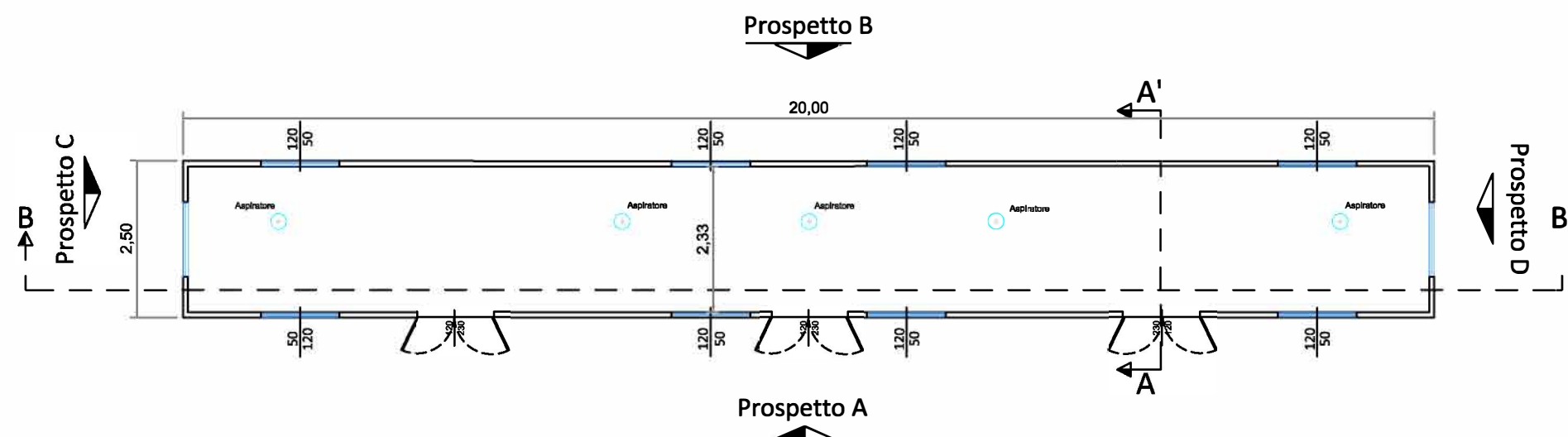


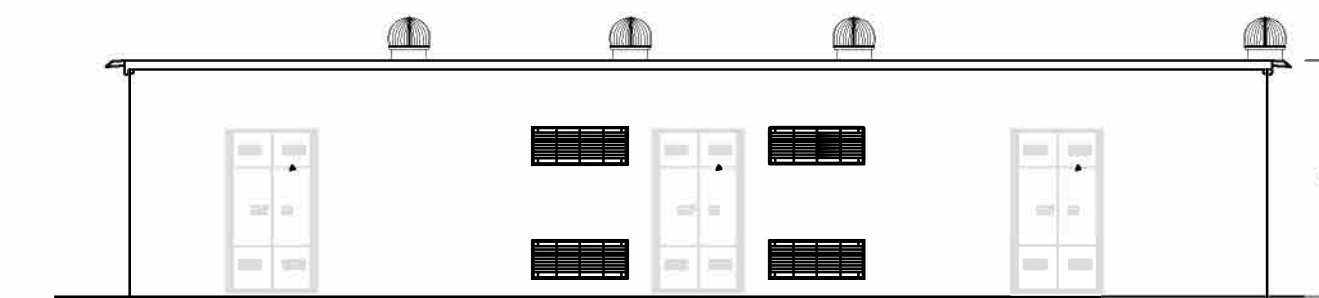
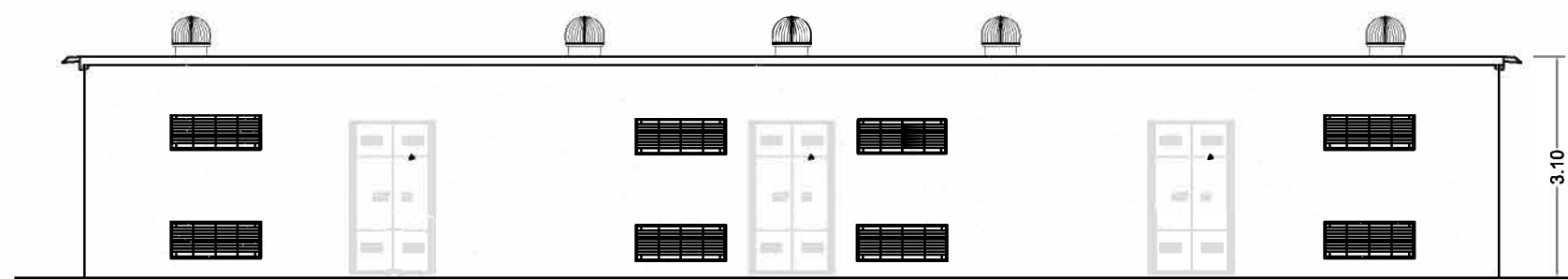
CABINA DI RACCOLTA IMPIANTO FV (CdR FV)

CABINA DI RACCOLTA SISTEMA DI ACCUMULO (CdR SdA)



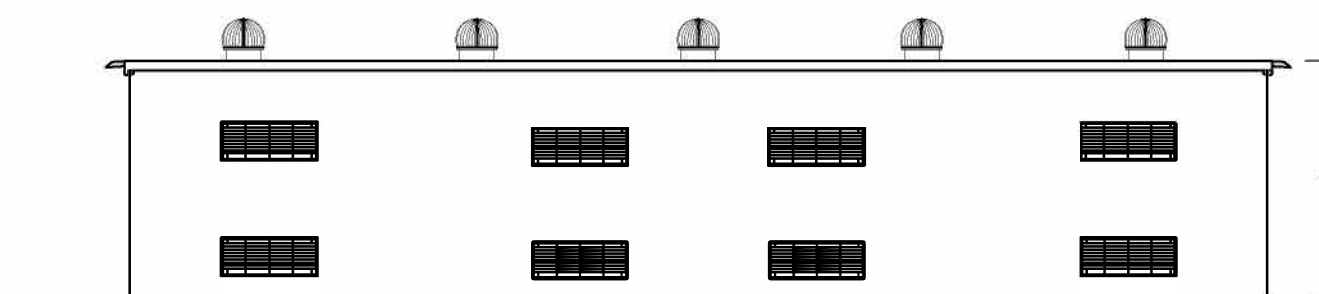
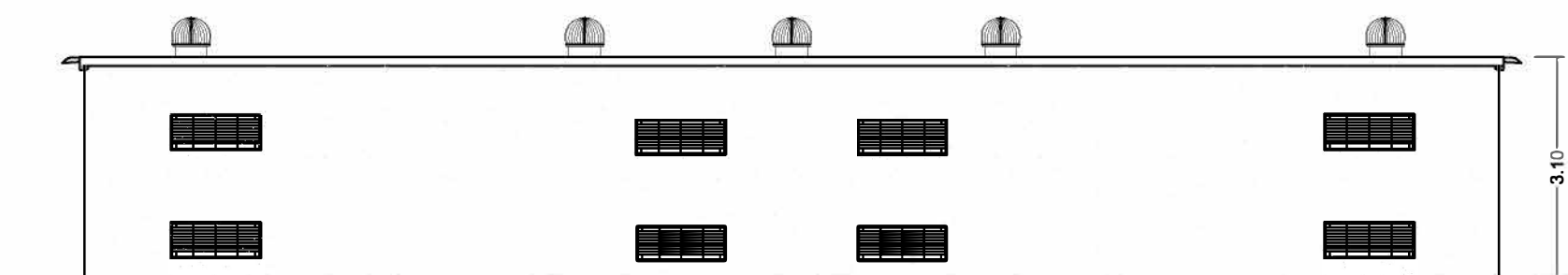
Sezione BB'

Sezione BB'



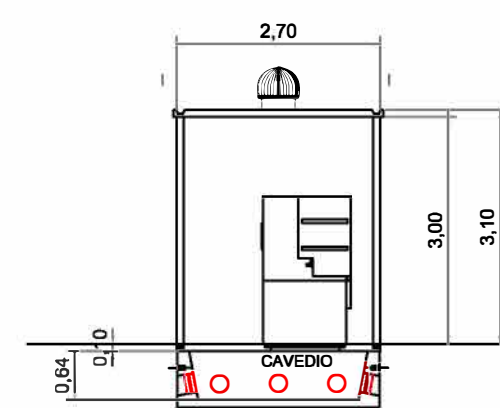
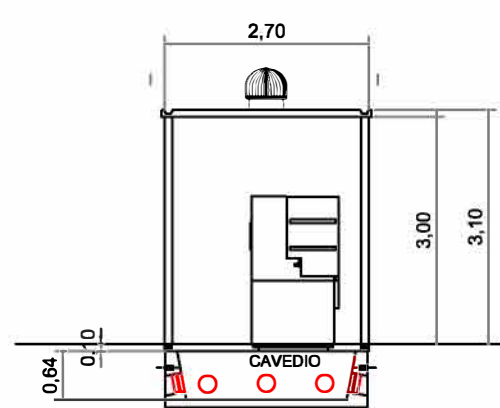
Prospetto A

Prospetto A



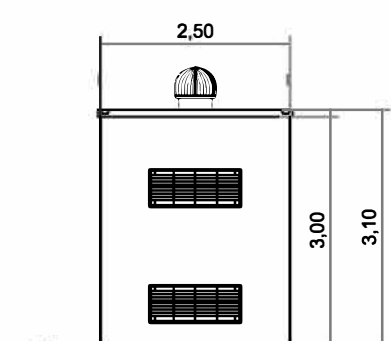
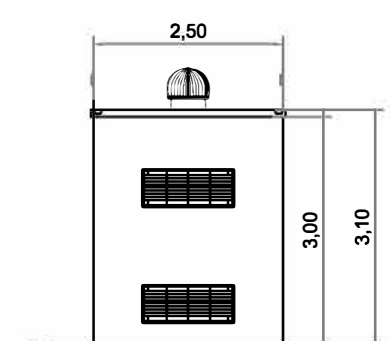
Prospetto B

Prospetto B



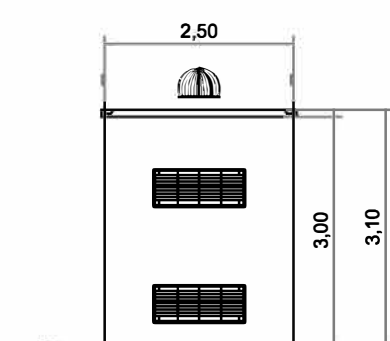
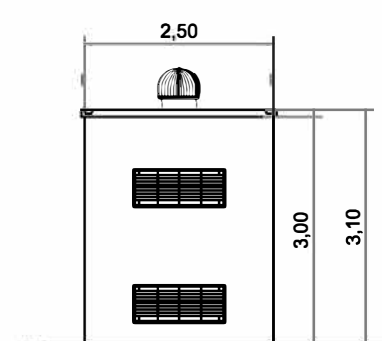
Sezione AA'

Sezione AA'



Prospetto C

Prospetto C



Prospetto D

Prospetto D

IMPIANTO DI PRODUZIONE DI ENERGIA DA FONTE SOLARE FOTOVOLTAICA CON ACCUMULO DENOMINATO "SASSARI 01"

REGIONE SARDEGNA
PROVINCIA di SASSARI
COMUNI di SASSARI e PORTO TORRES

PROGETTO DEFINITIVO

Tav.: E24
Titolo: Cabina di Raccolta Impianto (CdR FV)
Cabina di Raccolta Storage (CdR SdA)
Piante, sezioni e prospetti layout interno

Scala: 1:100
Formato Stampa: 815x554
Codice Identificatore Elaborato: E24_ElaboratoGrafico_24

Progettazione: DOTT. ING. FABIO CALCARELLA
Via Giorgione Ravenna, 14 - 72100 Lecce
Tel: +39 0832 9943179
fabio.calcarella@ingemil.com
P. IVA 04642300729

Comittente: Whysol-E Sviluppo S.r.l.
Via Menegoli, 3 - 20123 - MILANO
Tel: +39 02 296000
info@whysol.it
P. IVA 1052200096

Data	Motivo della revisione:	Redatto:	Controllato:	Approvato:
Febbraio 2021	Prima emissione	STC	FC	WHYSOL-E Sviluppo s.r.l.