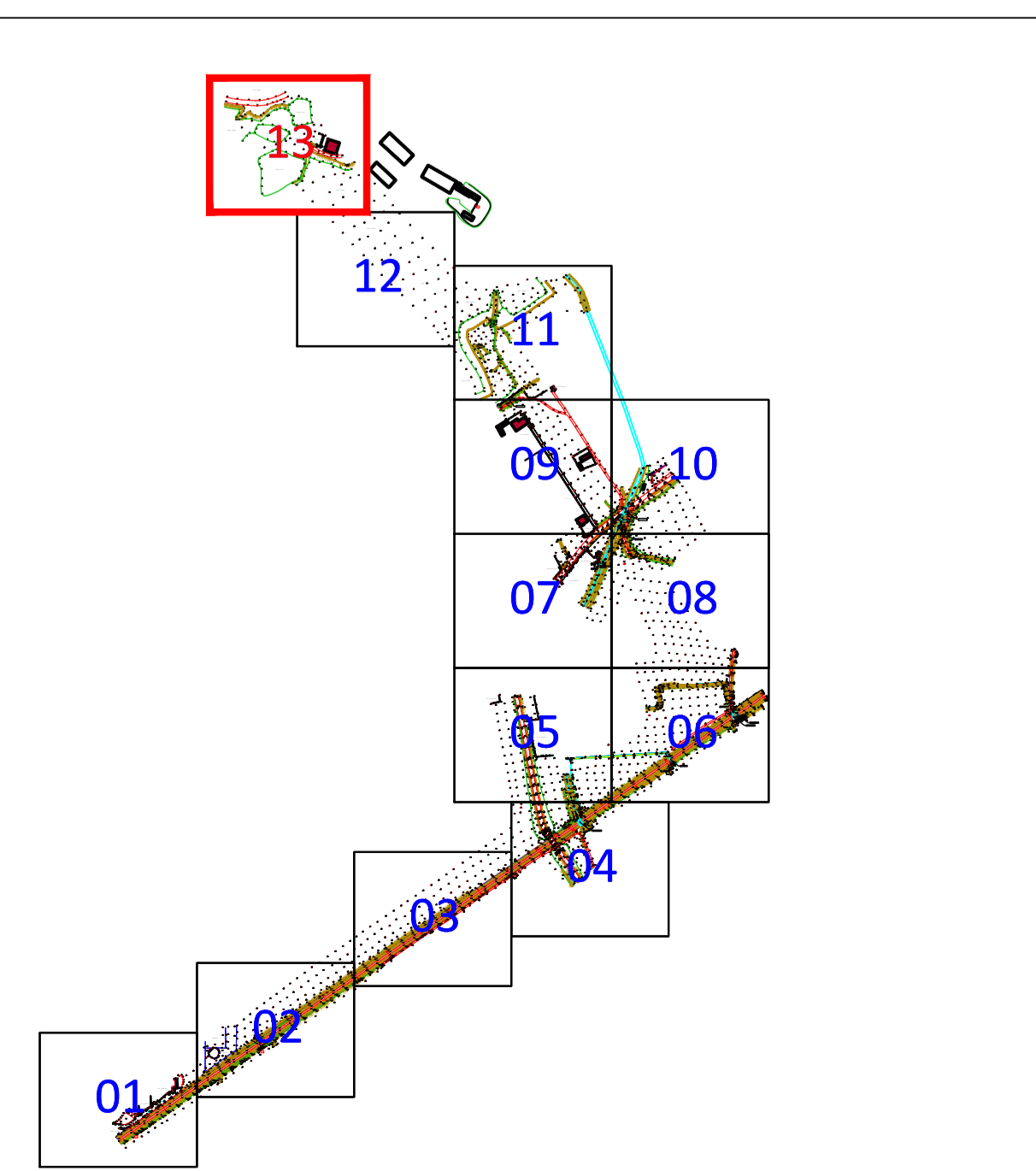


LEGENDA SIMBOLI	
	CORDOLI STRADALI MARCIAPIEDI, ECC.
	CORDOLI AVULS. ZONE A VERDE
	TRANSENNE
	MURI DI CONTENIMENTO
	RECINZIONI IN MURATURA
	RECINZIONI A GIORNO
	RECINZIONI (RETE METALLICA)
	GUARD RAILS STRADALI
	INGRESSI CARRI E PEDONALI DELLE RECINZIONI
	R.P.E. SCARRATE
	CANALI, FOSSI ADACQUATORI E CORSI D'ACQUA IN GENERE
	FABBRICATI ESISTENTI
	INGRESSI CARRI E PEDONALI DEGLI EDIFICI
	QUOTA DEL PUNTO RILEVATO E RELATIVA POSIZIONE
	VERTICI RETE TOPOGRAFICA DI INQUADRAMENTO
	STAZIONI DI RILEVAMENTO (CHIODI IN ACCIAIO)
	CHiusuro GENERICo
	CHiusuro GAS
	CHiusuro ENEL
	CAOTIDA
	CHiusuro SEMAFORICO
	CHiusuro ATM
	CHiusuro ANTINCENDIO
	CHiusuro PEDIGRONDA
	VALVOLA GAS
	VALVOLA ACQUEDOTTO
	GRIGLIA AERAZIONE
	BOTOLA GAS
	GRIGLIA SCOLDO ACQUA
	CHiusuro RAI
	CHiusuro AEM
	CHiusuro TELERISCALDAMENTO
	PALO ENEL
	PALO TELEFONICO
	PALO SEMAFORO
	PALO ILLUMINAZIONE PUBBLICA
	PALO ATM
	PALO FERMATA TRAMBUS
	PALO SOSTEGNO RETE AEREA
	SFIATO GAS
	PALO GENERICo
	SFIATO DISTRIBUTORE
	SEMAFORO APPESO
	PALO AEM
	CENTRALINA PARCHEMETRO
	PARCHEMETRO
	CABINA TELEFONICA
	ARMADIO TELEFONICO
	ARMADIO ENEL
	ARMADIO ATM
	CENTRALINA GAS
	ARMADIO SEMAFORO
	RIFLETTORE TELECOM
	ARMADIO AEM
	CARTELLI PUBBLICITARIO SINGOLO
	CARTELLI PUBBLICITARIO DOPPIO
	CARTELLI PUBBLICITARIO CIRCOLARE
	PANCHINA
	FONTANELLA
	OROLOGIO
	GASSETTA POSTALE
	ALBERI

Key - Plan



NOUVELLE LIGNE LYON TURIN - NUOVA LINEA TORINO LIONE
PARTIE COMMUNE FRANCO-ITALIENNE - PARTE COMUNE ITALO-FRANCESE
 CUP C110500030001 - LOTTO COSTRUTTIVO 1

Chantier Opérationnel 010 / Cantiere Operativo 010
CIG ZDB1F80CC0

PARTIE CONCEPTION MOE RACCORD FERROVIAIRE DE LA ZONE TECHNIQUE DE TORRAZZA - PROGETTO ESECUTIVO DELL'AREA TECNICA DI TORRAZZA

TOPOGRAPHIE - TOPOGRAFIA
RELIEF TOPOGRAPHIQUE - RILIEVO TOPOGRAFICO
PLANIMÉTRIE 13 DE 13 - PLANIMETRIA 13 DI 13

Index	Date / Date	Modifications / Modifiche	Elaboré par / Elaborato da	Validé par / Convalidato da	Approuvé par / Approvato da
0	11/07/2013	Primo emissione a seguito commenti TEL Premiere diffusion après commentaires TEL	G. Rezzina (SA)	A. Merra (SA)	A. Merra (SA)
A	11/07/2013	Revisione a seguito commenti TEL Révision après commentaires TEL	G. Rezzina (SA)	A. Merra (SA)	A. Merra (SA)

4 1 0 0 C 1 8 1 9 0 S T 1 1 0 0

E P L T O 0 2 1 5 A

1:250

SCALA / ECHELLE

AI ENGINEERING S.R.L.

04100/04101/04102/04103/04104/04105/04106/04107/04108/04109/04110/04111/04112/04113/04114/04115/04116/04117/04118/04119/04120/04121/04122/04123/04124/04125/04126/04127/04128/04129/04130/04131/04132/04133/04134/04135/04136/04137/04138/04139/04140/04141/04142/04143/04144/04145/04146/04147/04148/04149/04150/04151/04152/04153/04154/04155/04156/04157/04158/04159/04160/04161/04162/04163/04164/04165/04166/04167/04168/04169/04170/04171/04172/04173/04174/04175/04176/04177/04178/04179/04180/04181/04182/04183/04184/04185/04186/04187/04188/04189/04190/04191/04192/04193/04194/04195/04196/04197/04198/04199/04200/04201/04202/04203/04204/04205/04206/04207/04208/04209/04210/04211/04212/04213/04214/04215/04216/04217/04218/04219/04220/04221/04222/04223/04224/04225/04226/04227/04228/04229/04230/04231/04232/04233/04234/04235/04236/04237/04238/04239/04240/04241/04242/04243/04244/04245/04246/04247/04248/04249/04250/04251/04252/04253/04254/04255/04256/04257/04258/04259/04260/04261/04262/04263/04264/04265/04266/04267/04268/04269/04270/04271/04272/04273/04274/04275/04276/04277/04278/04279/04280/04281/04282/04283/04284/04285/04286/04287/04288/04289/04290/04291/04292/04293/04294/04295/04296/04297/04298/04299/04300/04301/04302/04303/04304/04305/04306/04307/04308/04309/04310/04311/04312/04313/04314/04315/04316/04317/04318/04319/04320/04321/04322/04323/04324/04325/04326/04327/04328/04329/04330/04331/04332/04333/04334/04335/04336/04337/04338/04339/04340/04341/04342/04343/04344/04345/04346/04347/04348/04349/04350/04351/04352/04353/04354/04355/04356/04357/04358/04359/04360/04361/04362/04363/04364/04365/04366/04367/04368/04369/04370/04371/04372/04373/04374/04375/04376/04377/04378/04379/04380/04381/04382/04383/04384/04385/04386/04387/04388/04389/04390/04391/04392/04393/04394/04395/04396/04397/04398/04399/04400/04401/04402/04403/04404/04405/04406/04407/04408/04409/04410/04411/04412/04413/04414/04415/04416/04417/04418/04419/04420/04421/04422/04423/04424/04425/04426/04427/04428/04429/04430/04431/04432/04433/04434/04435/04436/04437/04438/04439/04440/04441/04442/04443/04444/04445/04446/04447/04448/04449/04450/04451/04452/04453/04454/04455/04456/04457/04458/04459/04460/04461/04462/04463/04464/04465/04466/04467/04468/04469/04470/04471/04472/04473/04474/04475/04476/04477/04478/04479/04480/04481/04482/04483/04484/04485/04486/04487/04488/04489/04490/04491/04492/04493/04494/04495/04496/04497/04498/04499/04500/04501/04502/04503/04504/04505/04506/04507/04508/04509/04510/04511/04512/04513/04514/04515/04516/04517/04518/04519/04520/04521/04522/04523/04524/04525/04526/04527/04528/04529/04530/04531/04532/04533/04534/04535/04536/04537/04538/04539/04540/04541/04542/04543/04544/04545/04546/04547/04548/04549/04550/04551/04552/04553/04554/04555/04556/04557/04558/04559/04560/04561/04562/04563/04564/04565/04566/04567/04568/04569/04570/04571/04572/04573/04574/04575/04576/04577/04578/04579/04580/04581/04582/04583/04584/04585/04586/04587/04588/04589/04590/04591/04592/04593/04594/04595/04596/04597/04598/04599/04600/04601/04602/04603/04604/04605/04606/04607/04608/04609/04610/04611/04612/04613/04614/04615/04616/04617/04618/04619/04620/04621/04622/04623/04624/04625/04626/04627/04628/04629/04630/04631/04632/04633/04634/04635/04636/04637/04638/04639/04640/04641/04642/04643/04644/04645/04646/04647/04648/04649/04650/04651/04652/04653/04654/04655/04656/04657/04658/04659/04660/04661/04662/04663/04664/04665/04666/04667/04668/04669/04670/04671/04672/04673/04674/04675/04676/04677/04678/04679/04680/04681/04682/04683/04684/04685/04686/04687/04688/04689/04690/04691/04692/04693/04694/04695/04696/04697/04698/04699/04700/04701/04702/04703/04704/04705/04706/04707/04708/04709/04710/04711/04712/04713/04714/04715/04716/04717/04718/04719/04720/04721/04722/04723/04724/04725/04726/04727/04728/04729/04730/04731/04732/04733/04734/04735/04736/04737/04738/04739/04740/04741/04742/04743/04744/04745/04746/04747/04748/04749/04750/04751/04752/04753/04754/04755/04756/04757/04758/04759/04760/04761/04762/04763/04764/04765/04766/04767/04768/04769/04770/04771/04772/04773/04774/04775/04776/04777/04778/04779/04780/04781/04782/04783/04784/04785/04786/04787/04788/04789/04790/04791/04792/04793/04794/04795/04796/04797/04798/04799/04800/04801/04802/04803/04804/04805/04806/04807/04808/04809/04810/04811/04812/04813/04814/04815/04816/04817/04818/04819/04820/04821/04822/04823/04824/04825/04826/04827/04828/04829/04830/04831/04832/04833/04834/04835/04836/04837/04838/04839/04840/04841/04842/04843/04844/04845/04846/04847/04848/04849/04850/04851/04852/04853/04854/04855/04856/04857/04858/04859/04860/04861/04862/04863/04864/04865/04866/04867/04868/04869/04870/04871/04872/04873/04874/04875/04876/04877/04878/04879/04880/04881/04882/04883/04884/04885/04886/04887/04888/04889/04890/04891/04892/04893/04894/04895/04896/04897/04898/04899/04900/04901/04902/04903/04904/04905/04906/04907/04908/04909/04910/04911/04912/04913/04914/04915/04916/04917/04918/04919/04920/04921/04922/04923/04924/04925/04926/04927/04928/04929/04930/04931/04932/04933/04934/04935/04936/04937/04938/04939/04940/04941/04942/04943/04944/04945/04946/04947/04948/04949/04950/04951/04952/04953/04954/04955/04956/04957/04958/04959/04960/04961/04962/04963/04964/04965/04966/04967/04968/04969/04970/04971/04972/04973/04974/04975/04976/04977/04978/04979/04980/04981/04982/04983/04984/04985/04986/04987/04988/04989/04990/04991/04992/04993/04994/04995/04996/04997/04998/04999/05000