



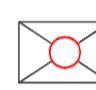



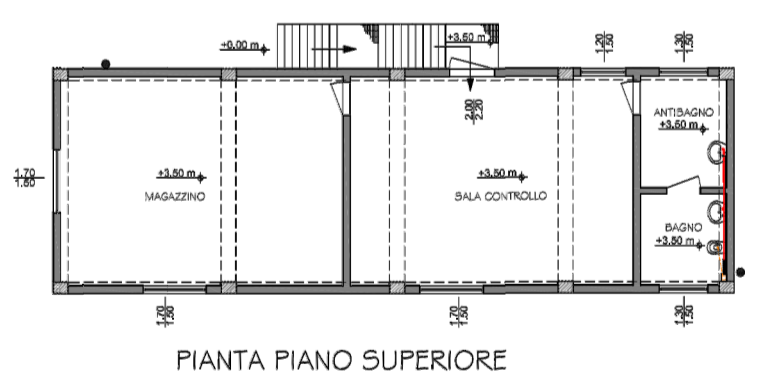
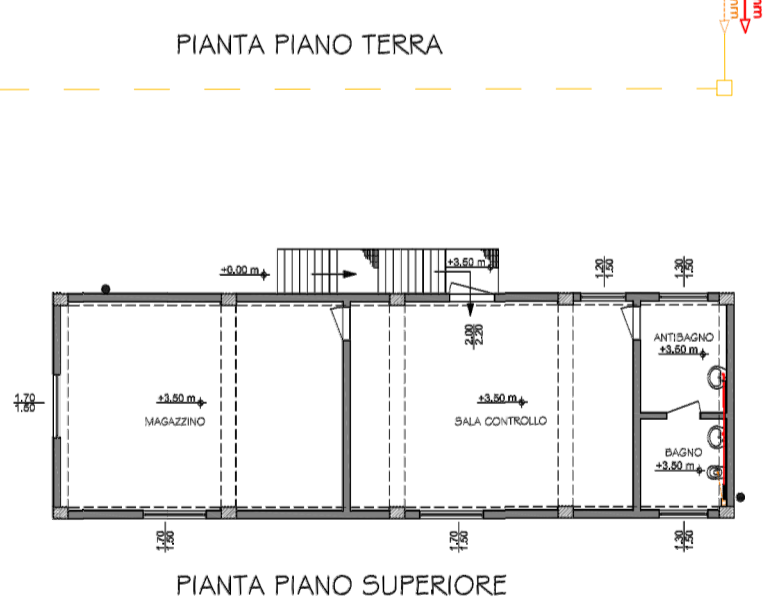
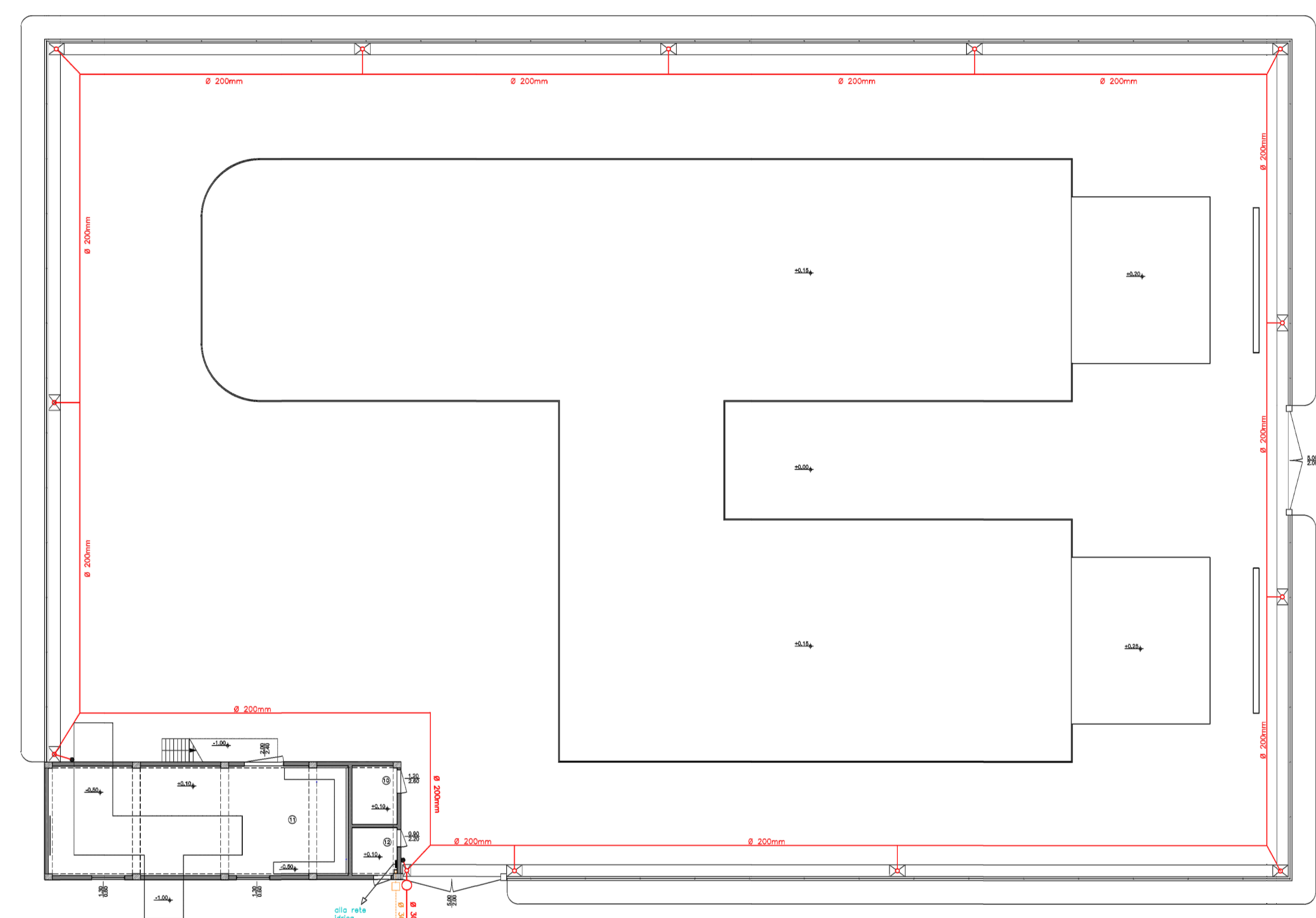
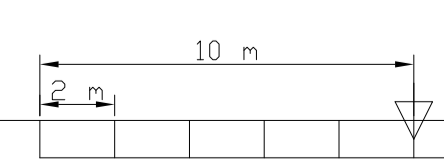



**Legenda Impianto idrico e fognario**

-  Pluviale Ø100 mm raccolta acque meteoriche
-  Tubazione impianto idrico
-  Tubazione impianto fognario acque nere Ø 80mm
-  Tubazione impianto raccolta acque meteoriche Ø 200mm
-  Chiusino in ghisa - caditoie
-  Pozzetto di ispezione acque meteoriche
-  Pozzetto ispezione acque nere
-  cavedio colonne di scarico Ø 120mm





SOTTOSTAZIONE DI TRASFORMAZIONE







**REGIONE BASILICATA**





Rif.	Quantità	 <b>PROGETTO PER LA REALIZZAZIONE DI UN PARCO EOLICO DA 42 MW NEL COMUNE DI GENZANO DI LUCANIA (PZ)</b>	Numero articolo/Riferimento
Progettato da	Controllato da	Approvato da - data	Nome file
Ing. M. Martellucci	Ing. M. Martellucci	Ing. F. Di Chiappari - 10/01/11	G_41
			Data
			10/01/2011
			Scala
			1:200



**Sottostazione di Trasformazione  
Planimetria impianto di smaltimento acque bianche (meteoriche) e nere**

A.16.b.9	Edizione	Foglio
	0	1/1

SKYWIND S.r.l. via Marconi, 6 - 04024 Gaeta (LT) Italia