

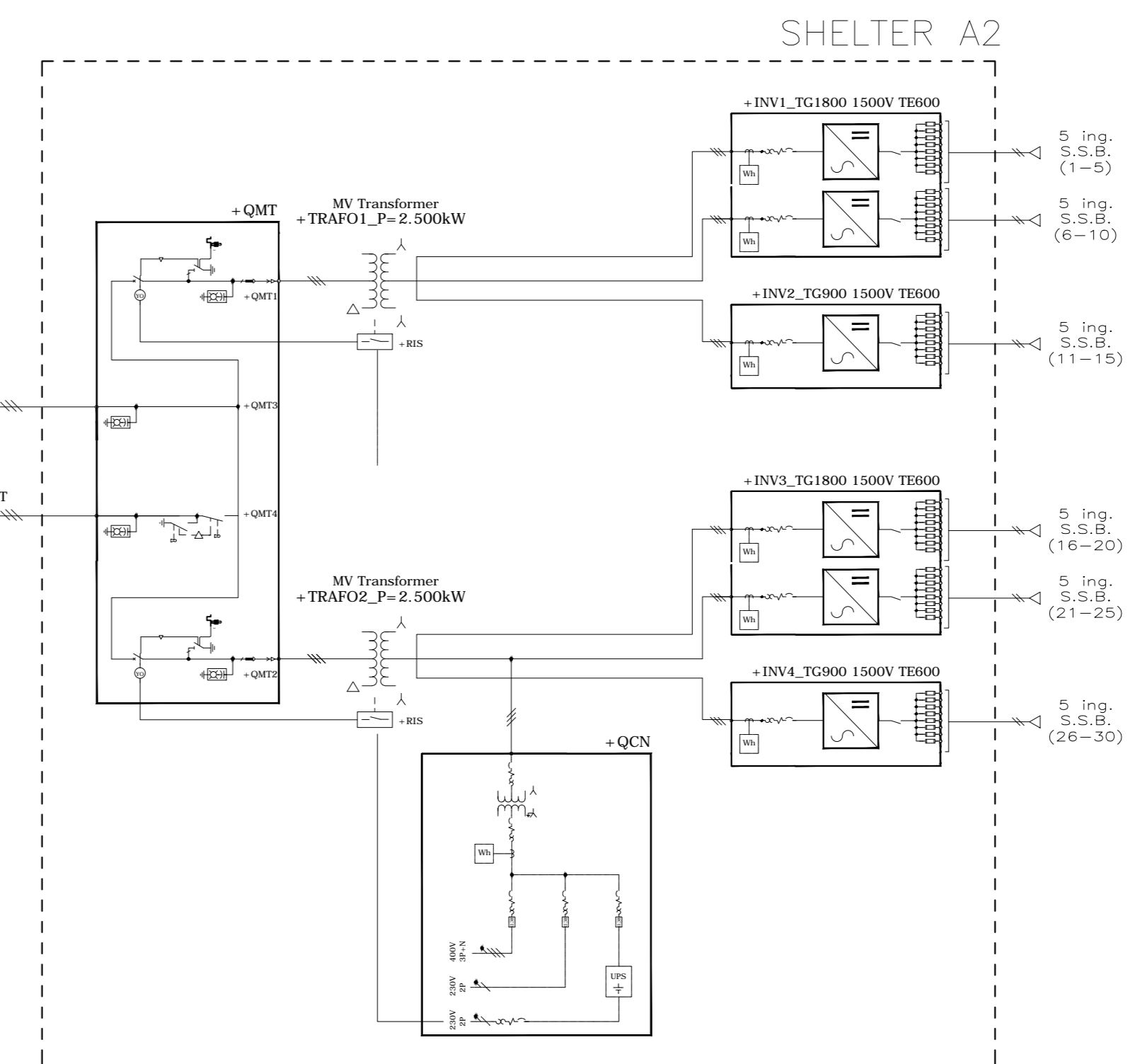
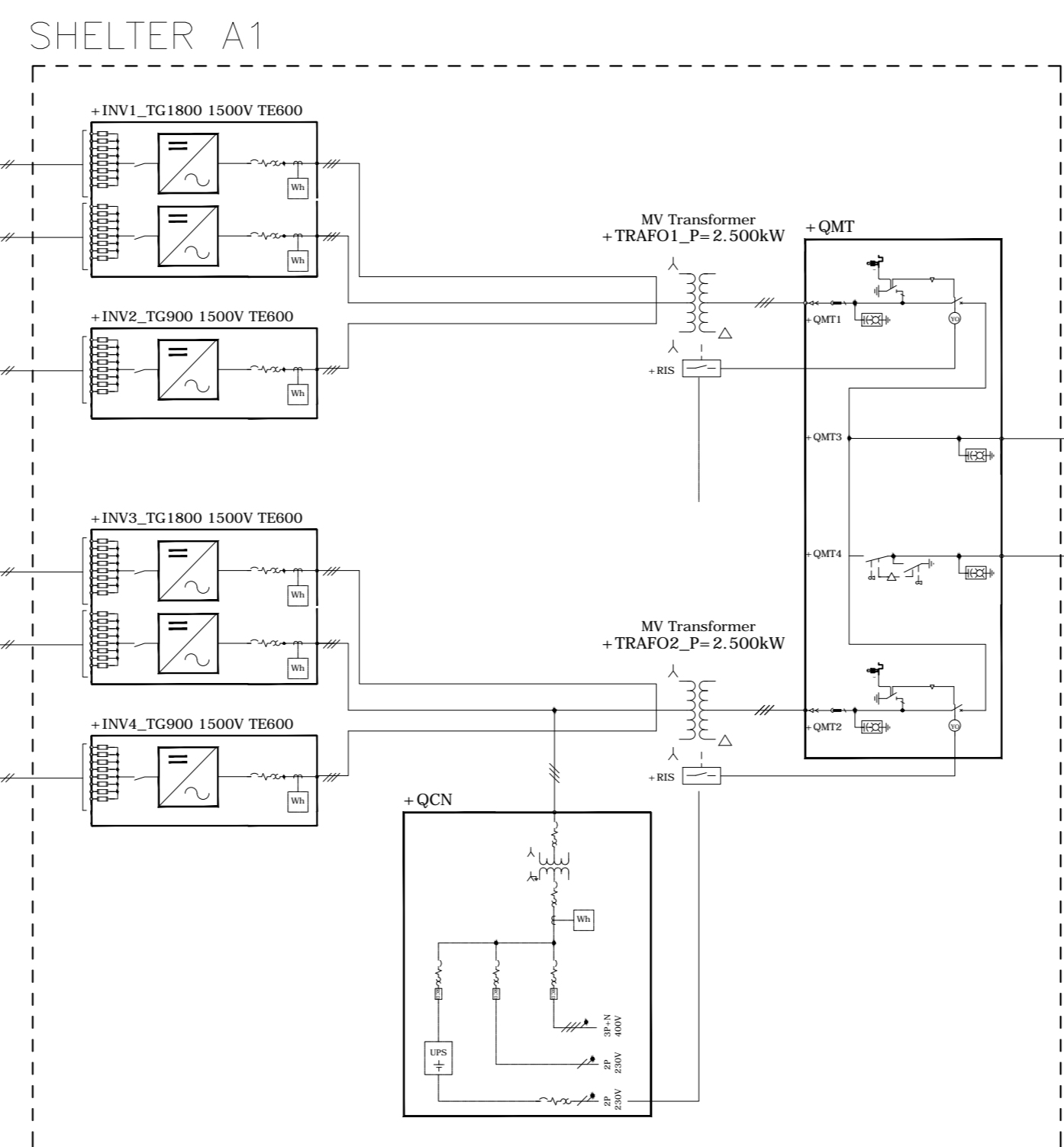
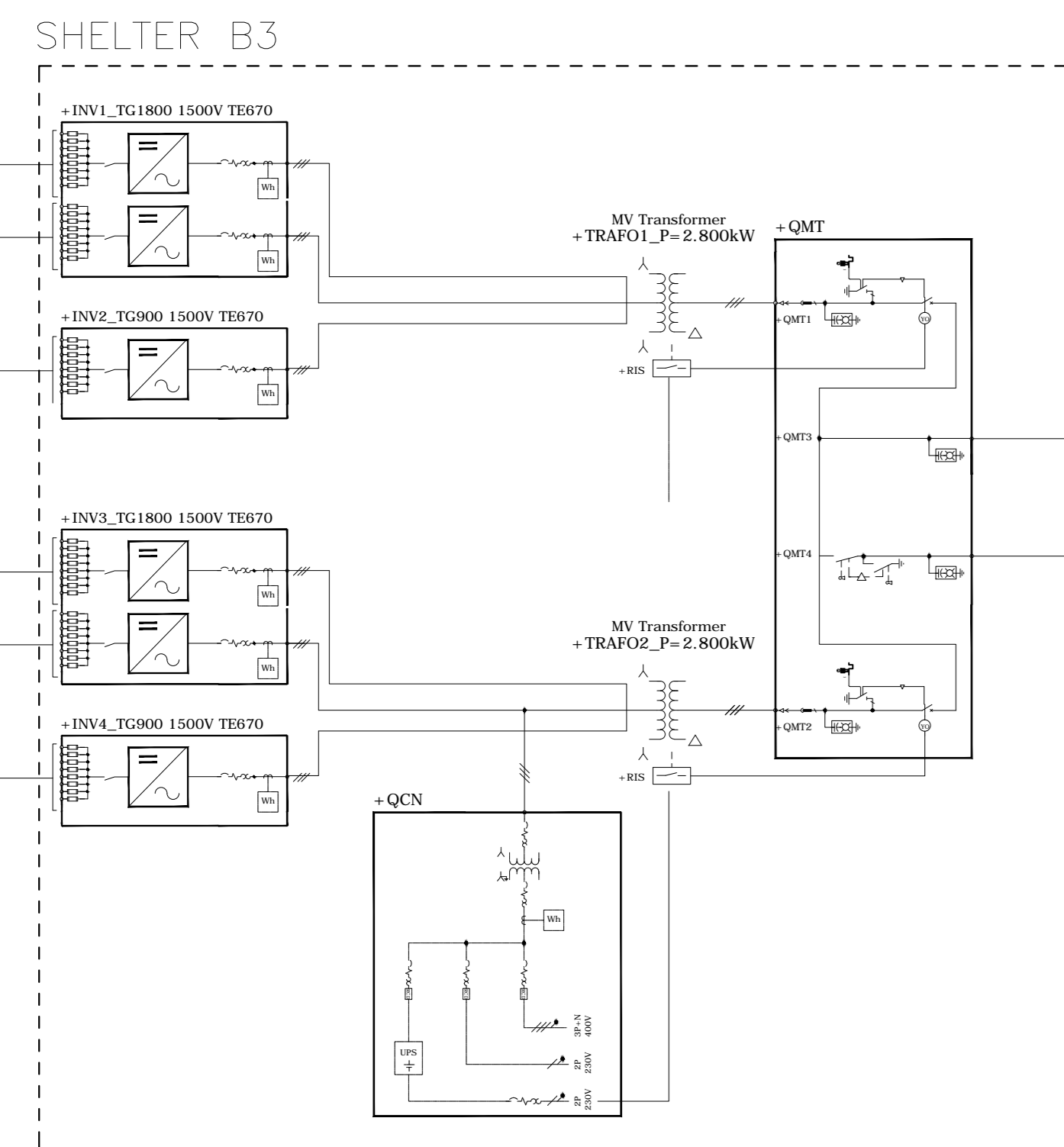
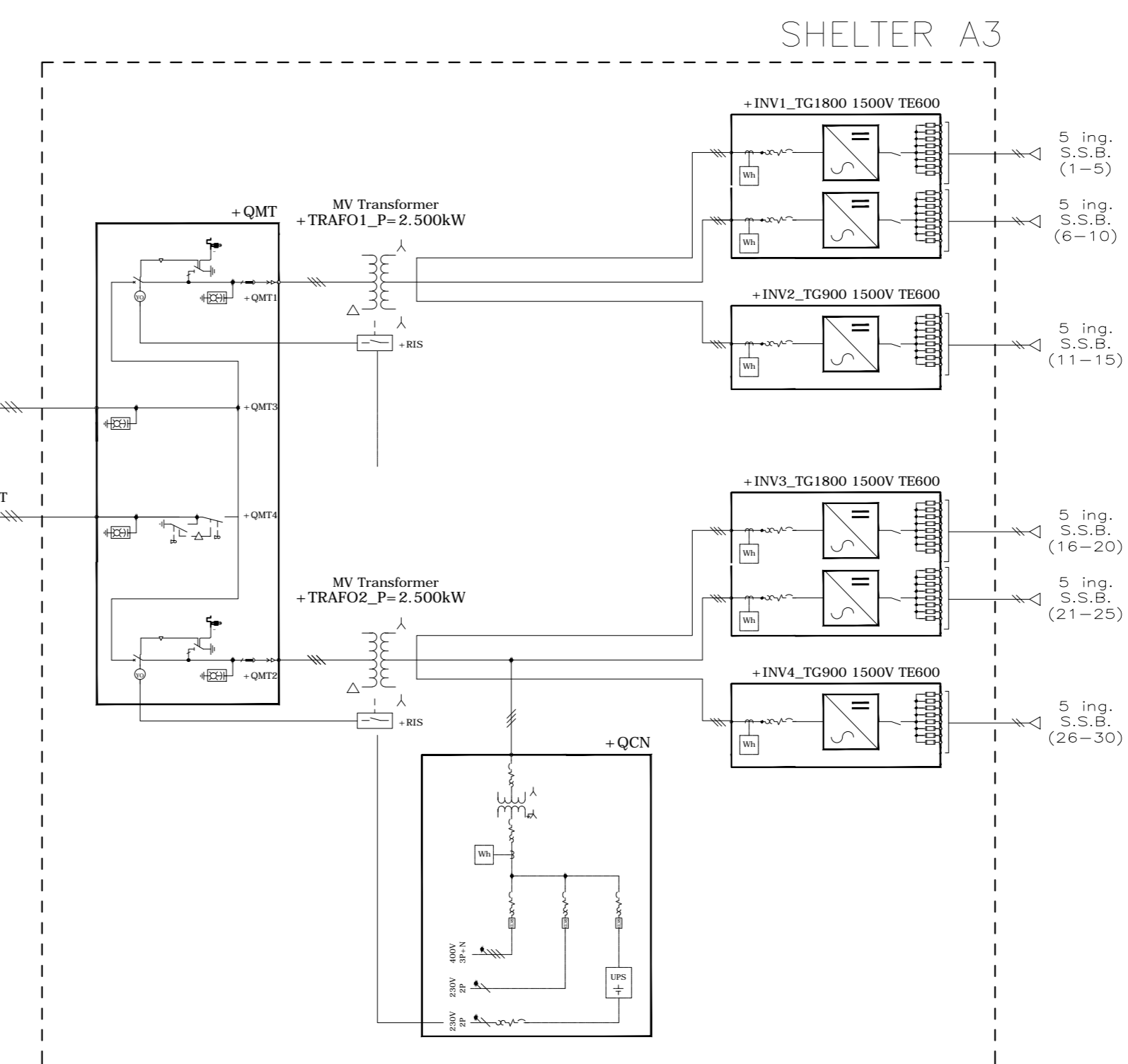
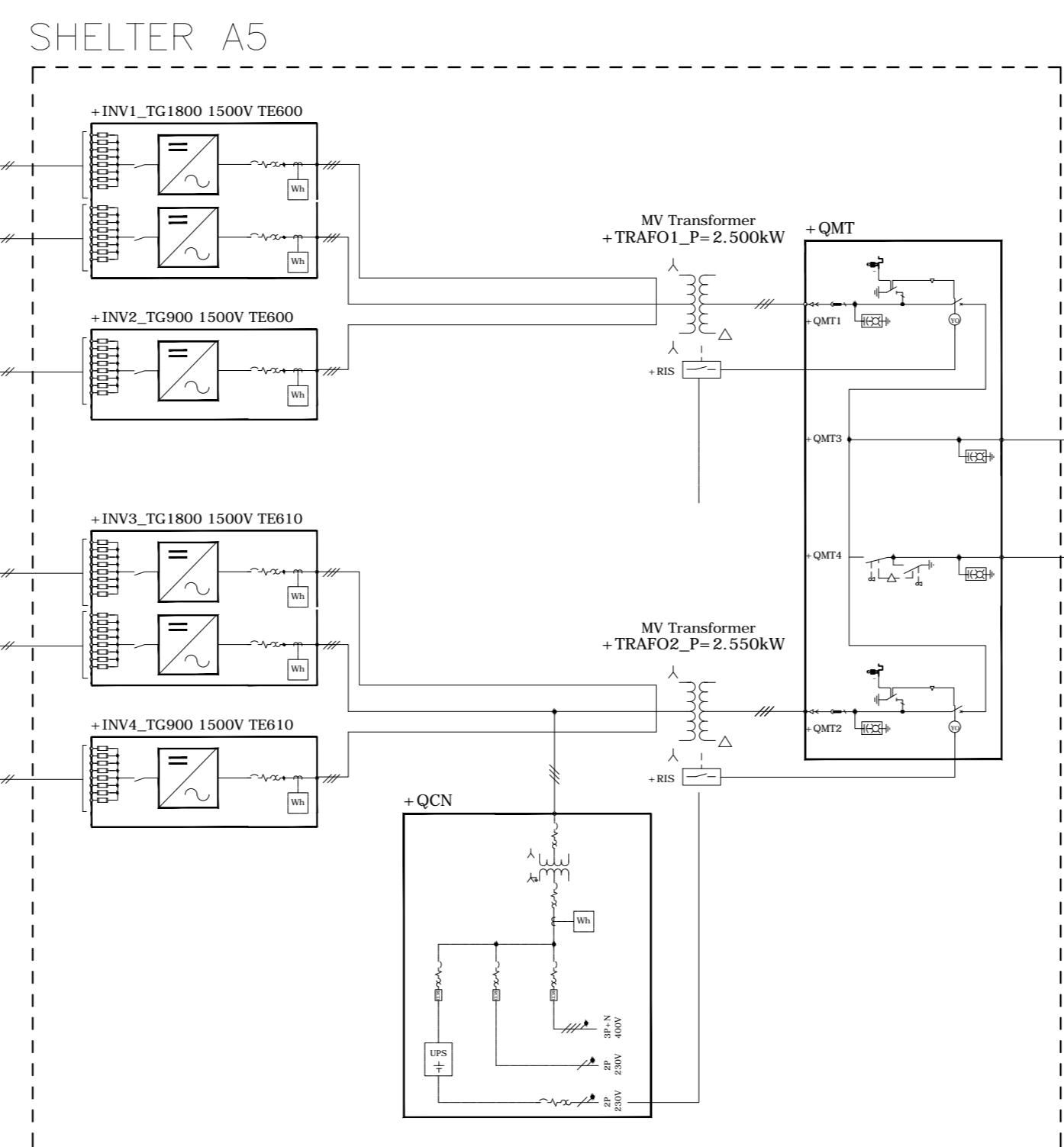
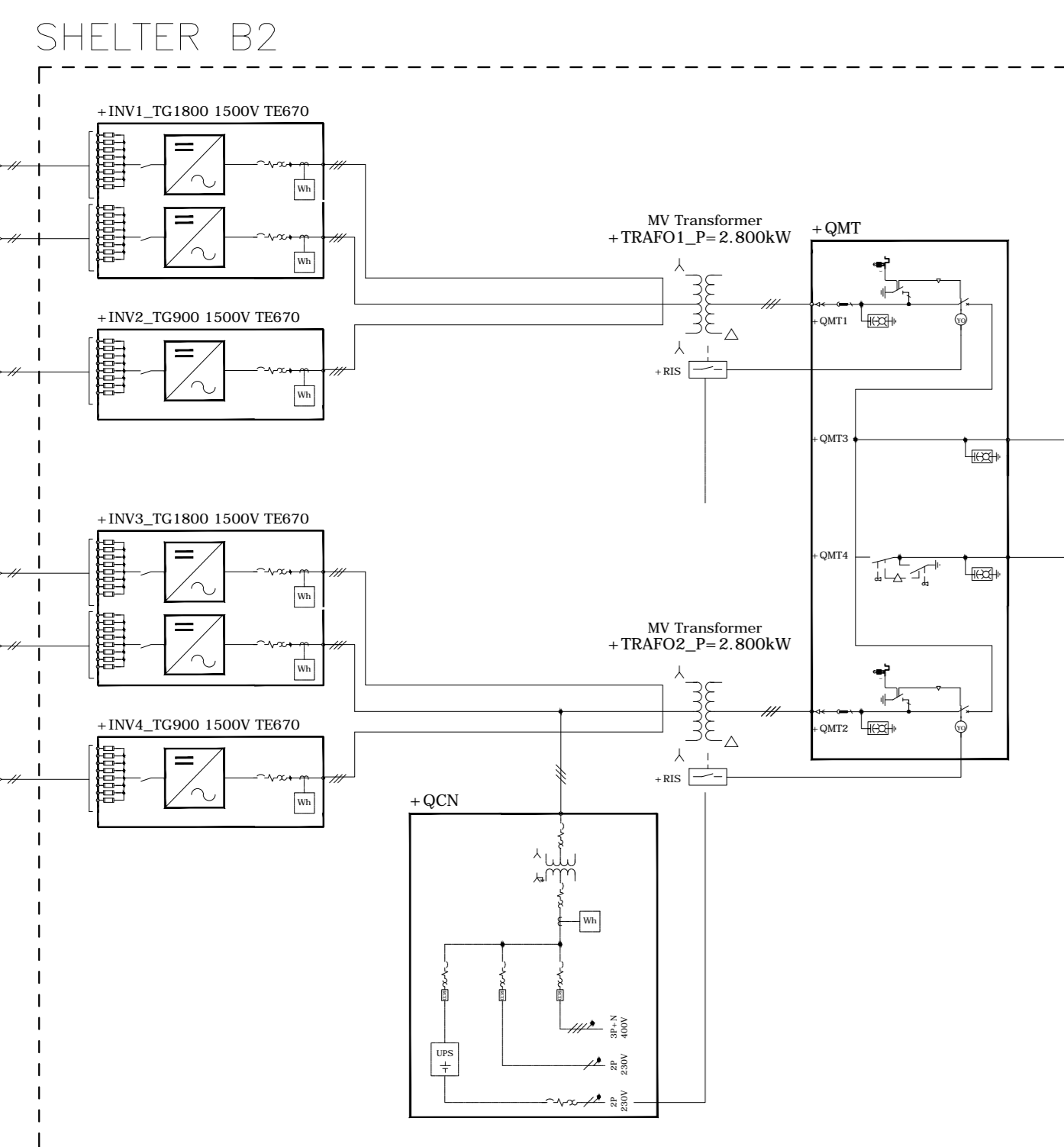
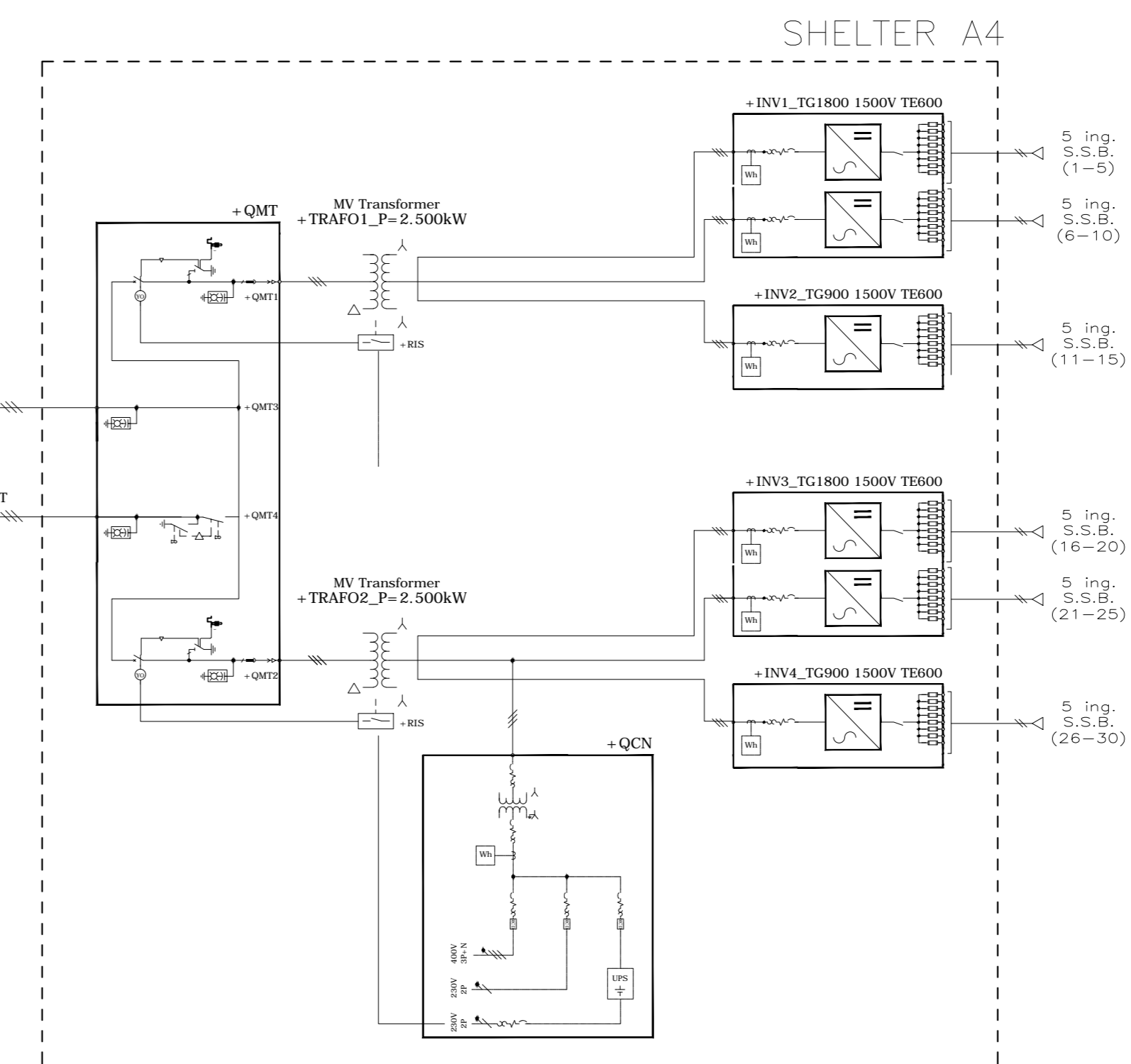
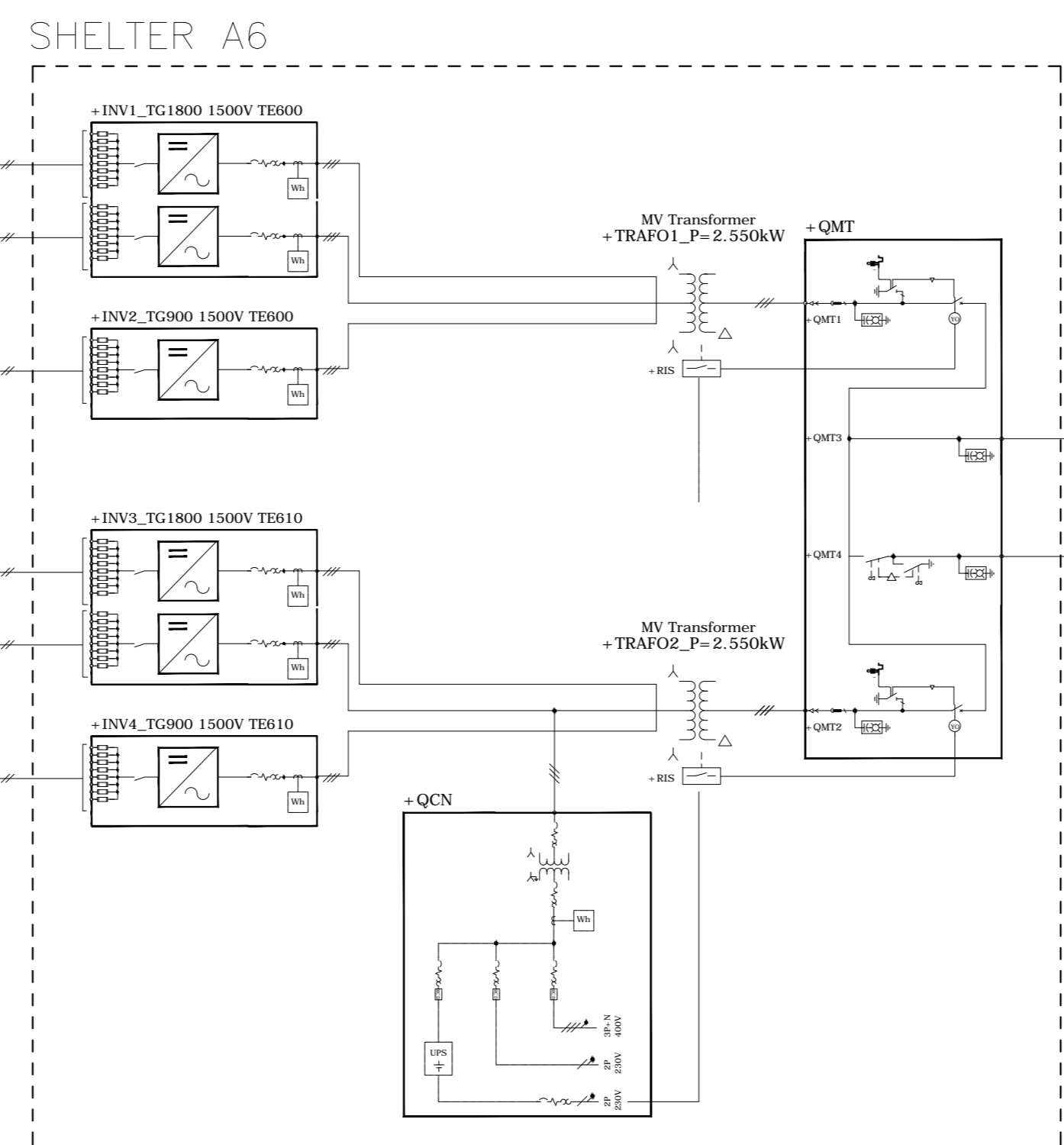
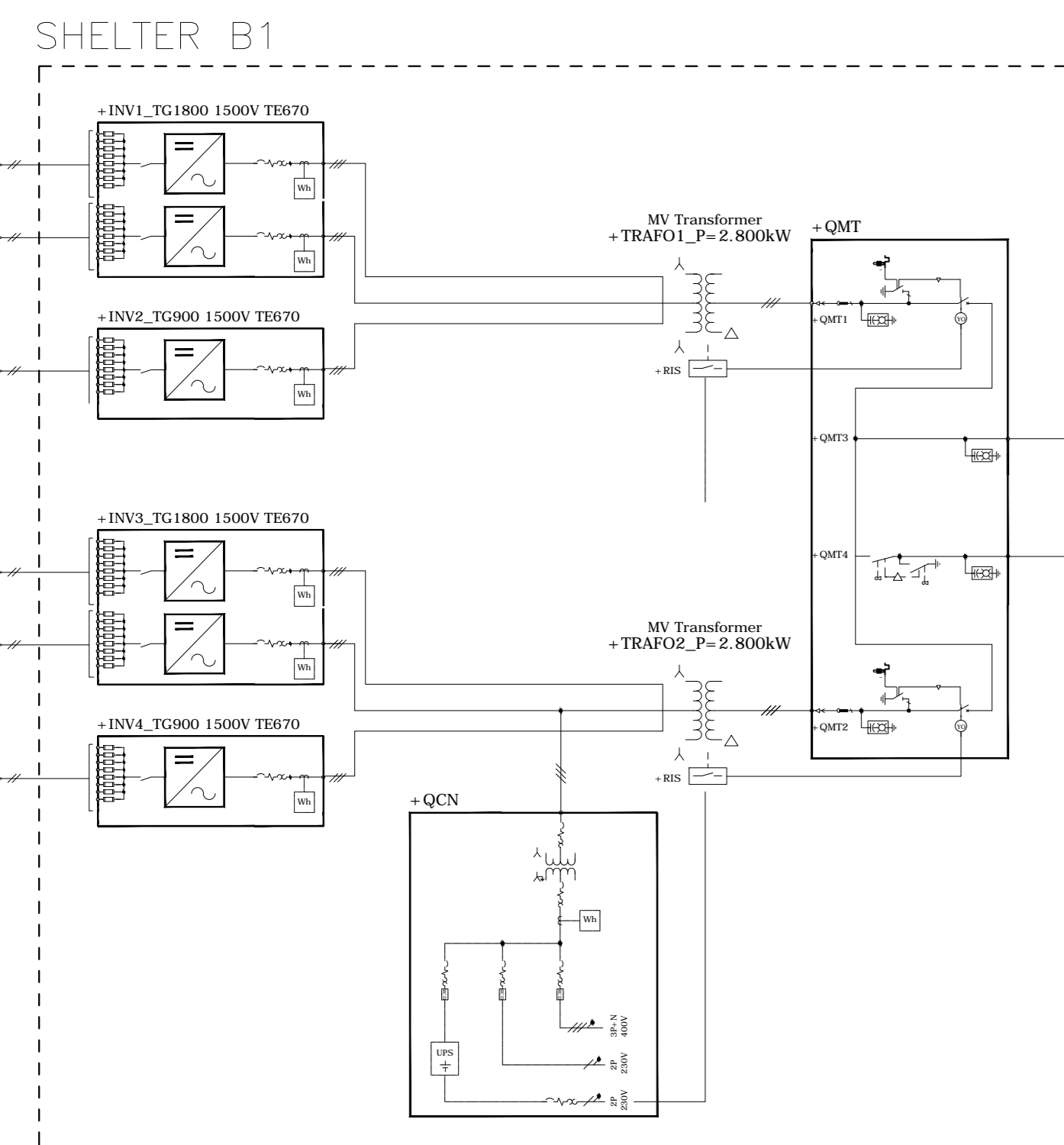
QUADRO MT CABINA DI SEZIONAMENTO "LOTTO B"

CABINA AUX "LOTTO B"

QUADRO MT CABINA DI SEZIONAMENTO "LOTTO A"

CABINA AUX "LOTTO A"

SSE



ARCHITETTURA IMPIANTO FOTOVOLTAICO								
Shelter	modello inverter SUNWAY TG	Pn [kW] Inverter	Pn [kW] trasformatore	Pn [kW] Shelter	smart string box	n° di stringhe totali	Potenza di picco inverter [kWp]	Potenza di picco shelter [kWp]
A1	TG1800 1500V TE 600	1660	2500	4980	10	137	1923	5742
	TG900 1500V TE 600	830				68	955	
	TG1800 1500V TE 600	1660				136	1909	
	TG900 1500V TE 600	830				68	955	
A2	TG1800 1500V TE 600	1660	2500	4980	10	138	1938	5790
	TG900 1500V TE 600	830				68	955	
	TG1800 1500V TE 600	1660				138	1938	
	TG900 1500V TE 600	830				69	969	
A3	TG1800 1500V TE 600	1660	2500	4980	10	136	1909	5742
	TG900 1500V TE 600	830				68	955	
	TG1800 1500V TE 600	1660				138	1938	
	TG900 1500V TE 600	830				67	941	
A4	TG1800 1500V TE 600	1660	2500	4980	10	140	1966	5770
	TG900 1500V TE 600	830				68	955	
	TG1800 1500V TE 600	1660				137	1923	
	TG900 1500V TE 600	830				66	927	
A5	TG1800 1500V TE 600	1688	2550	5022	11	141	1980	5933
	TG900 1500V TE 610	844				68	955	
	TG1800 1500V TE 610	1688				142	1994	
	TG900 1500V TE 610	844				73	1025	
A6	TG1800 1500V TE 600	1688	2550	5064	11	145	2036	6023
	TG900 1500V TE 600	844				71	997	
	TG1800 1500V TE 610	1688				143	2008	
	TG900 1500V TE 610	844				70	983	
B1	TG1800 1500V TE 670	1856	2800	5568	11	150	2106	6318
	TG900 1500V TE 670	928				76	1067	
	TG1800 1500V TE 670	1856				150	2106	
	TG900 1500V TE 670	928				74	1039	
B2	TG1800 1500V TE 670	1856	2800	5568	11	152	2134	6388
	TG900 1500V TE 670	928				80	1123	
	TG1800 1500V TE 670	1856				147	2064	
	TG900 1500V TE 670	928				76	1067	
B3	TG1800 1500V TE 670	1856	2800	5568	11	148	2078	6276
	TG900 1500V TE 670	928				75	1053	
	TG1800 1500V TE 670	1856				150	2106	
	TG900 1500V TE 670	928				74	1039	
		46710		283	3847		54012	

REGIONE PUGLIA

COMUNE DI ASCOLI SATRIANO

PROGETTO PER LA REALIZZAZIONE E L'ESERCIZIO DI UN IMPIANTO AGRIVOLTAICO AVENTE POTENZA P=54MWp CIRCA E RELATIVE OPERE DI CONNESSIONE

Nome impianto ASC03
Comune di Ascoli Satriano, Prov. di Foggia, Reg. Puglia

PROGETTO DEFINITIVO

Codice pratica: **ATFWK17**

N° Elaborato: **FV22**

ELABORATO:
SCHEMA ELETTRICO UNIFILARE IMPIANTO FOTOVOLTAICO

PROGETTISTI:
Ing. Alessandro la Grasta
Ing. Luigi Tattoli

COMMITTENTE:
LT 01 s.r.l.
via Leonardo da Vinci n°12
39100 Bolzano (BZ)
p.iva: 08363700728

PROGETTAZIONE:
LTservice energy solutions

00	16/02/2021	A0	PRIMA EMISSIONE
REV.	DATA	SCALA	DESCRIZIONE REVISIONE