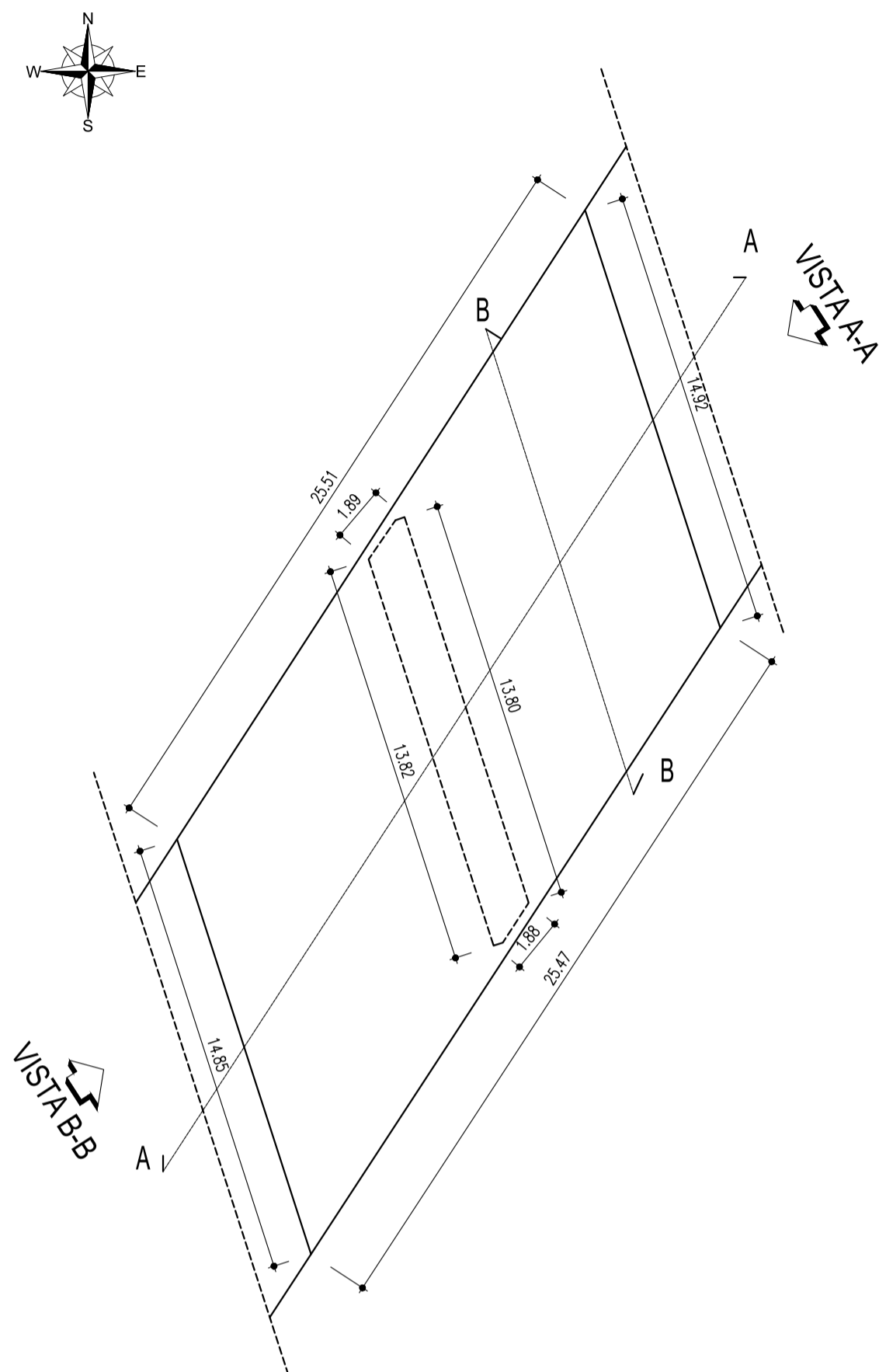
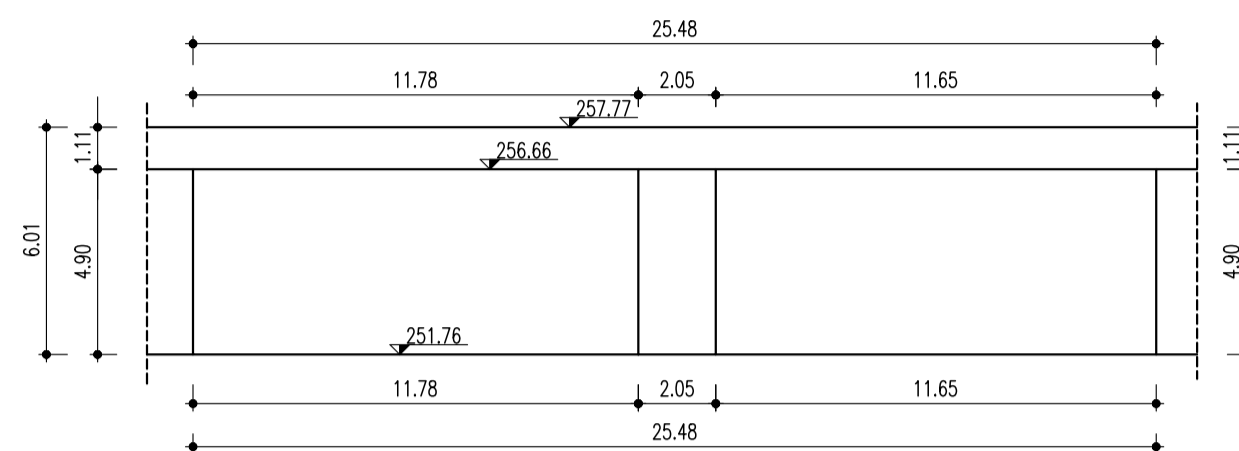


PIANTA
(SCALA 1 : 200)



SEZIONE LONGITUDINALE A - A
(SCALA 1 : 200)



SEZIONE TRASVERSALE B - B
(SCALA 1 : 200)

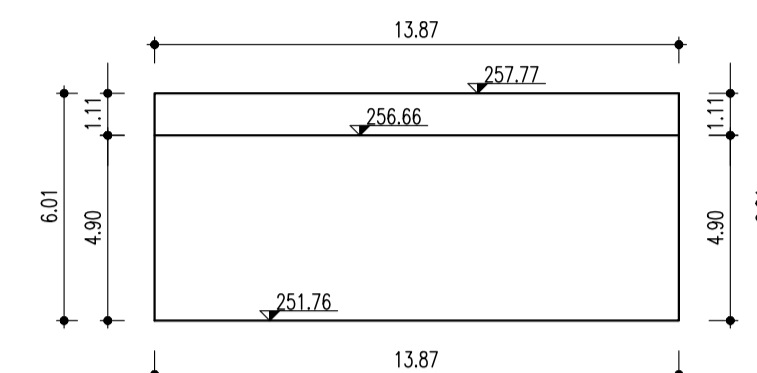
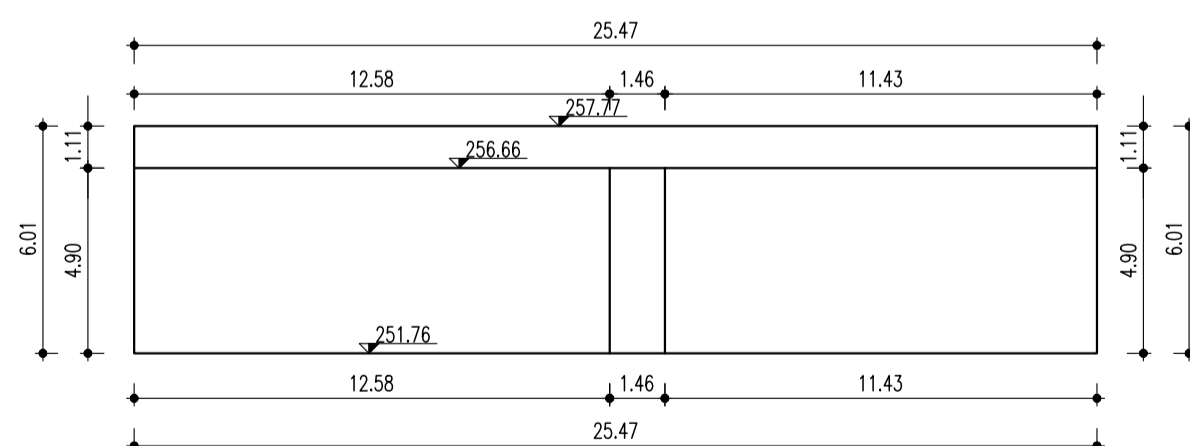


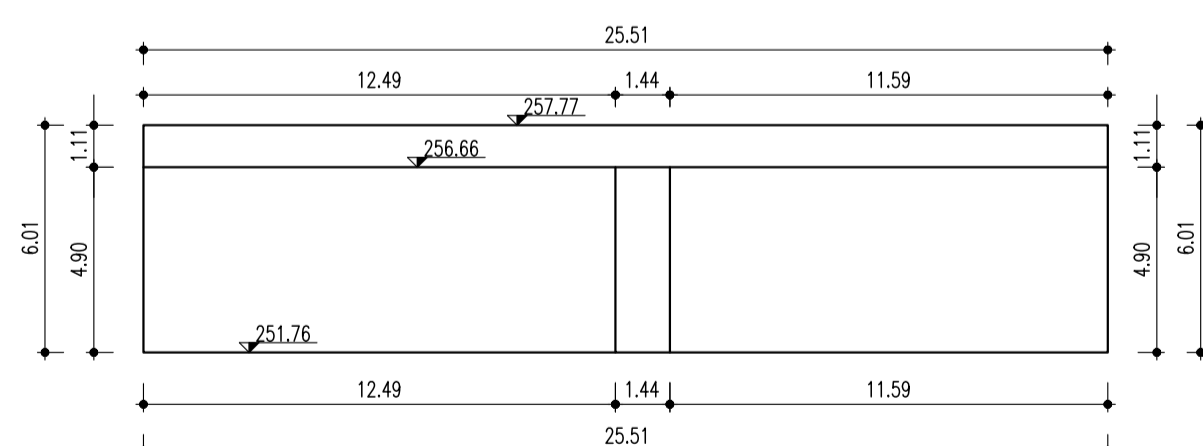
IMMAGINE PONTE ESISTENTE ESTRATTA DA GOOGLE EARTH



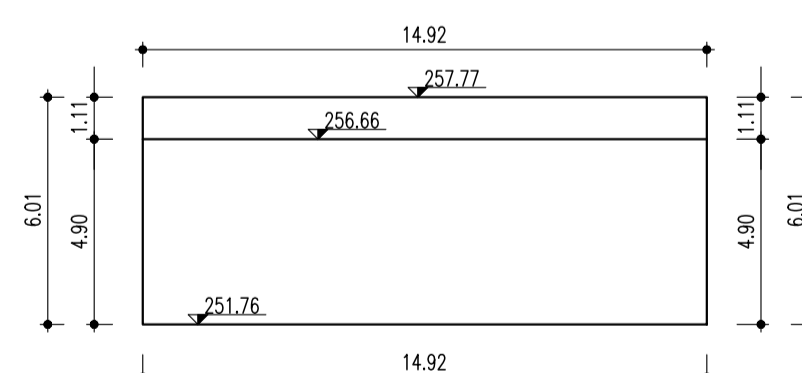
PROSPETTO SUD - EST
(SCALA 1 : 200)



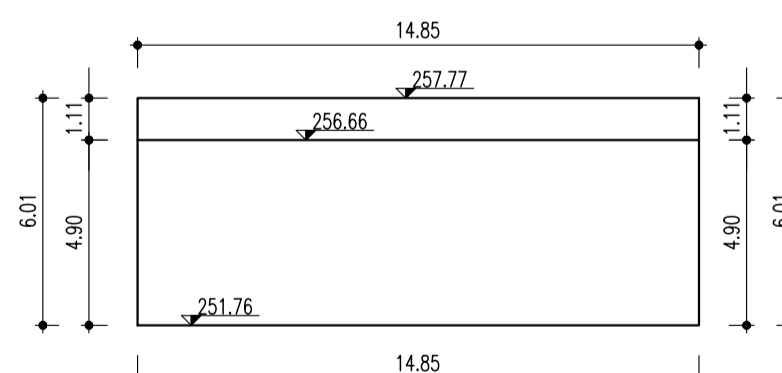
PROSPETTO NORD - OVEST
(SCALA 1 : 200)



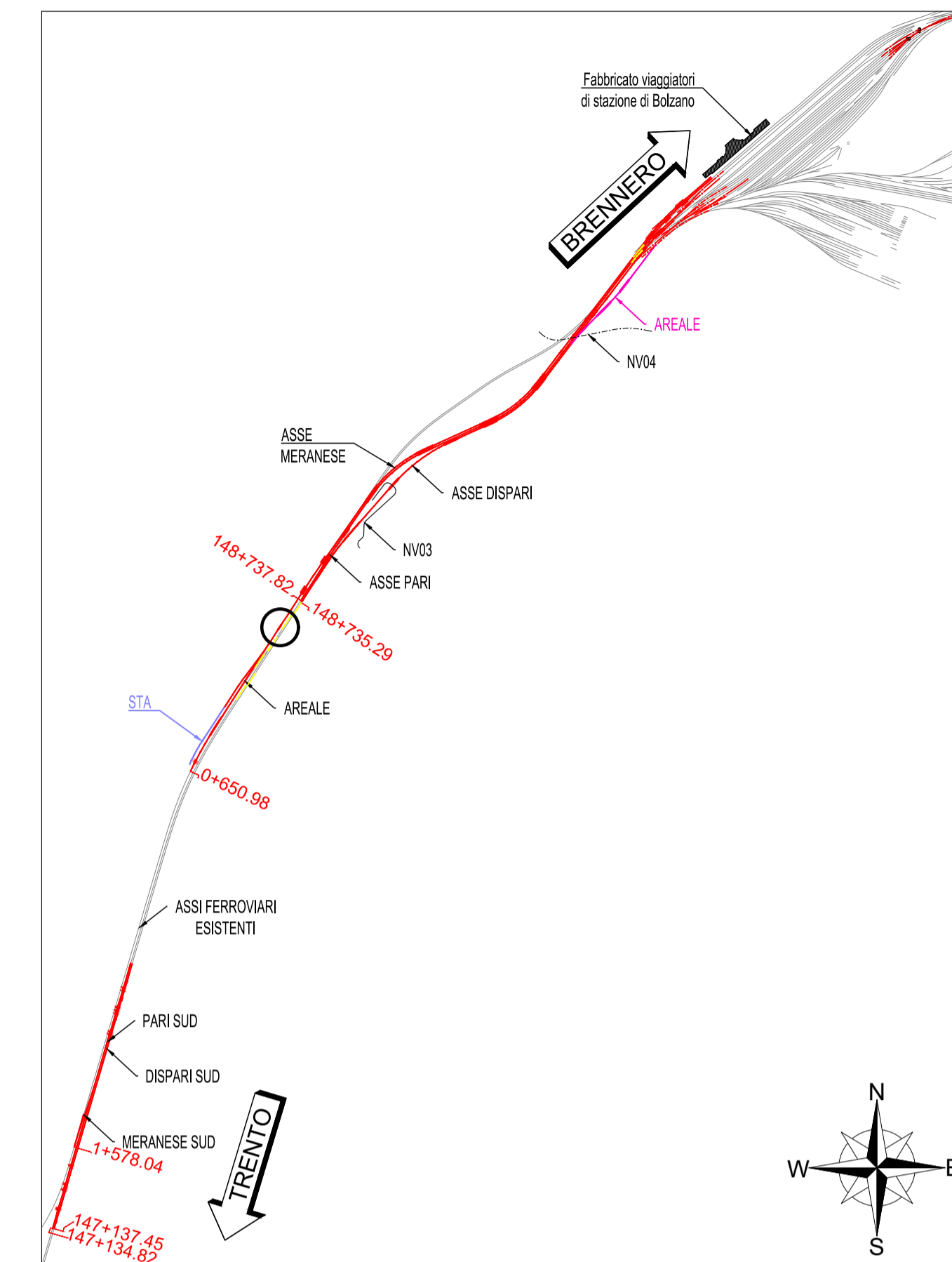
VISTA A-A
(SCALA 1 : 200)



VISTA B-B
(SCALA 1 : 200)



KEY - PLAN



COMMITTENTE:



PROGETTAZIONE:



CUP J94J17000040001

U.O. COORDINAMENTO TERRITORIALE NORD

PROGETTO DEFINITIVO

LINEA BOLZANO - MERANO
REALIZZAZIONE NUOVO TUNNEL DEL VIRGOLO A 3 BINARI -
SPOSTAMENTO BIVIO LINEA MERANESE

SINGOLE OPERE DI LINEA

VI01 OPERE CIVILI NV01
PIANTE PROSPETTI E SEZIONI PONTE ESISTENTE

SCALA:

1:200

COMMESSA LOTTO FASE ENTE TIPO DOC. OPERA/DISCIPLINA PROGR. REV.

NB1D 01 D 26 P9 VI0100 002 A

Rev.	Descrizione	Redatto	Data	Verificato	Data	Approvato	Data	Autorizzato	Data
A	Emissione esecutiva	Technical	mag-21	M. Sestini	mag-21	A. Mazzocchi	mag-21	A. Parago	mag-21

File: NB1D01D26P9VI0100002A.DWG