

SMANTELLARE

NOTA 1: EMERGENCY SHUT OFF VALVE ACTUATED BY PUSH BUTTON, WITH A LOW PRESURE ALARM

NOTA 2: DRUM WITH HIGH AND LOW LEVEL ALARM FOLLOWED BY MANUAL ACTIVATION OF PUMP

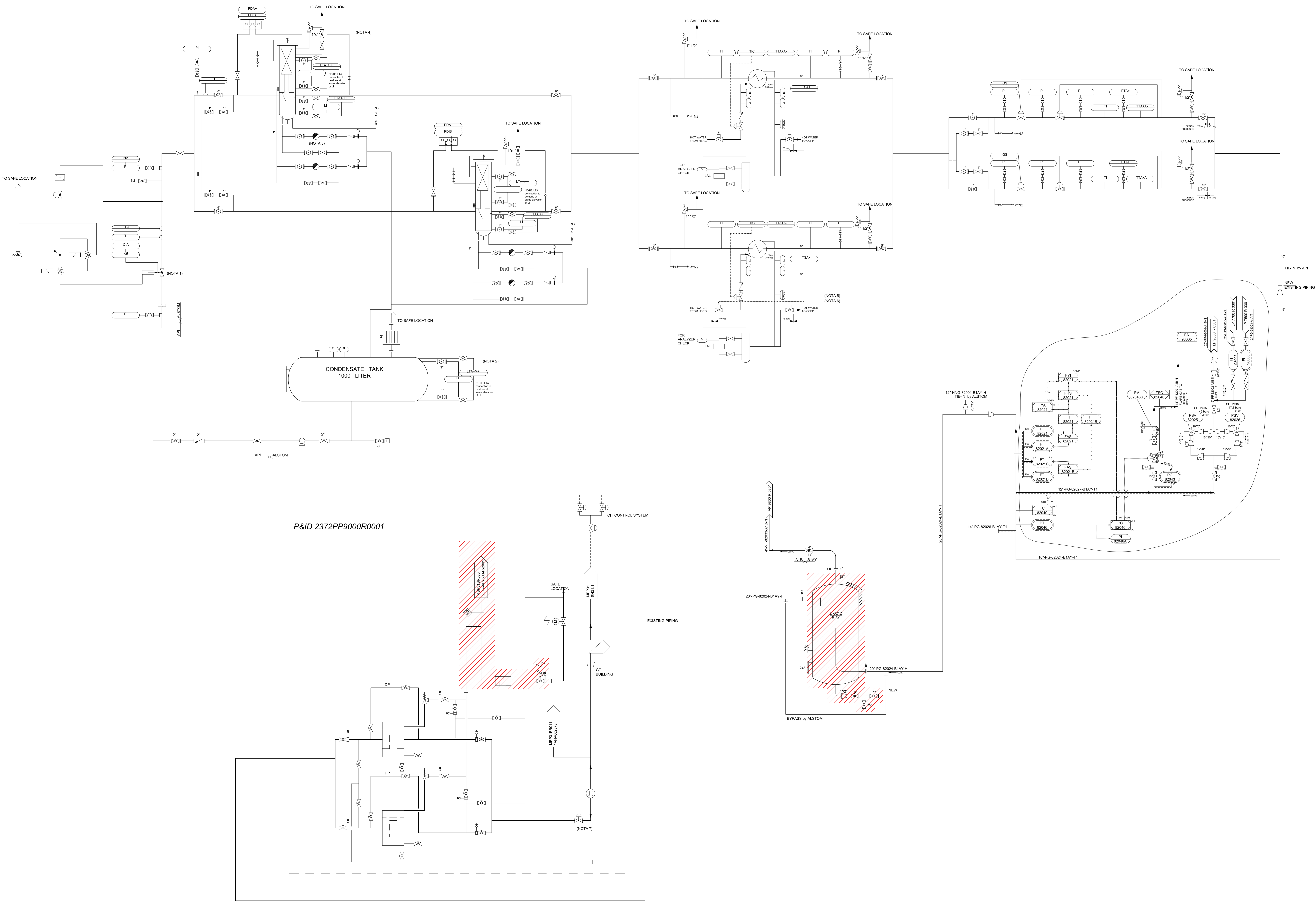
NOTA 3: SELF ACTUATED DRAINS

NOTA 4: ONLY HIGH LEVEL ALARM: IN CASE OF HL ALARM OPERATOR HAS TO SWITCH TO ALTERNATIVE COALESCER FOR FURTHER INVESTIGATION

NOTA 5: PROCEDURE:
 1. LOW LEVEL ALARM TRANSMITTED
 2. OPERATOR SWITCHES TO ALTERNATIVE EXCHANGER
 3. OPERATOR CLOSES VALVES ON HOT WATER SIDE AND CHECKS LEAKAGE

NOTA 6: DESIGN PRESSURE SHELL SIDE: 75 barg

NOTA 7: ACTUATED BY GAS TURBINE FEEDSTOCK CONTROL SYSTEM FOR SHUT DOWN AND START-UP LOGICS (PART OF SD AND SU SEQUENCE)



0	16/04/12	EMISSO PER COMMENTI	CSF	PACENTE	LOGATO
REV.	DATA	DESCRIZIONE	DESIGNATO	CONTROLLATO	APPROVATO
		API REFINERY FALCONARA-ITALY CCPP NATURAL GAS CONVERSION			
		compagnia servizi tecnici s.r.l.			
DESIGNATO	CSF	Fuel Gas Treatment Station			
CONTROLLATO	PACENTE	& Fuel Gas System			
APPROVATO	LOGATO	Preliminary Document			
HOME CAD	-				
DATA	16/04/12				
SCALA	-	UNITA'	GRUPPO	FORM.	NUMERO
					REV. FOLIO
					di 1