

LEGEND			
SYMBOL	DESCRIPTION	SYMBOL	DESCRIPTION
	WITHDRAWABLE CIRCUIT BREAKER		FIXED CIRCUIT BREAKER
	DISCONNECTING SWITCH		EARTHING RESISTOR
	GENERATOR		BUS DUCT
	POWER TRANSFORMER WITH TWO WINDINGS TRIANGLE - STAR		POWER TRANSFORMER WITH TWO WINDINGS STAR - TRIANGLE
	POWER TRANSFORMER WITH THREE WINDINGS		POWER TRANSFORMER WITH THREE WINDINGS
	VOLTAGE TRANSFORMER		CURRENT TRANSFORMER
	CABLE AND SEALING ENDS		SURGE ARRESTER
	CAPACITOR COUPLED VOLTAGE TRANSFORMER		LINE TRAP
	ON LOAD TAP CHANGER		OFF LOAD TAP CHANGER
	ACTIVE POWER ENERGY METERING (IMPORT - EXPORT)		REACTIVE POWER ENERGY METERING (IMPORT - EXPORT)
	ACTIVE POWER ENERGY METERING (ENERGY PURCHASED FROM ENEL)		REACTIVE POWER ENERGY METERING (ENERGY PURCHASED FROM ENEL)
	ACTIVE POWER ENERGY METERING (ENERGY SOLD TO ENEL)		REACTIVE POWER ENERGY METERING (ENERGY SOLD TO ENEL)
	LIMIT OF SUPPLY		BUS BAR

REFERENCE DRAWING			
2372 AE 7900 R0006	F	M.V./L.V. AND D.C. SYSTEM SINGLE LINE DIAGRAM	
2372 AE 7900 R0001	F	PROTECTION SINGLES AND MEASURING SINGLE LINE DIAGRAM G.T. & S.T.	
2372 AE 7900 R0004	F	132kV SINGLE LINE DIAGRAM SYSTEM PROTECTION METERING KEY DIAGRAM	
2372 AE 7900 R0007	D	H.V./M.V./L.V. SYSTEM KEY DIAGRAM	
2372 AE 7900 E1022	C	ENEL UTF WATHOURS & WARHOURS METER ELECTRIC DIAGRAM	

NOTES			
<b>Schema unifiare ATTUALE</b>			
REV. "D" ISSUED FOR CONSTRUCTION TO OWNER / OWNER'S ENGINEER FOR INFORMATION ONLY			

REV.	DATE	DESCRIPTION	ISSUED	CHECKED	APPROVED
F	12/12/00	AS BUILT BY REQUIRED API ENERGIA	BELO COSMA	MAZZOTTA	NEGR
E	02/12/99	AS BUILT	BENIGNI	ZONCHETTI	PROTI
D	09/10/98	ADDED UTF METERS	COLAN	PROTI	NEGR
C	23/07/98	REVISED WHERE INDICATED	COLAN	RECORAM	NEGR
B	04/04/97	ACCORDING ENEL M.D.M. 12/02/97	BUSI	RECORAM	NEGR
A	18/06/96	FIRST ISSUE	BESCI	RECORAM	NEGR

**API RAFFINERIA FALCONARA - ITALY**  
**INTEGRATED GASIFICATION AND COMBINED CYCLE PROJECT**

**TEMPORARY ASSOCIATION OF COMPANIES:**  
 ABB SAE SADELMI MILAN ITALY  
 ABB LUMMUS GLOBAL WIESBADEN GERMANY  
 ABB POWER GENERATION BADEN SWITZERLAND

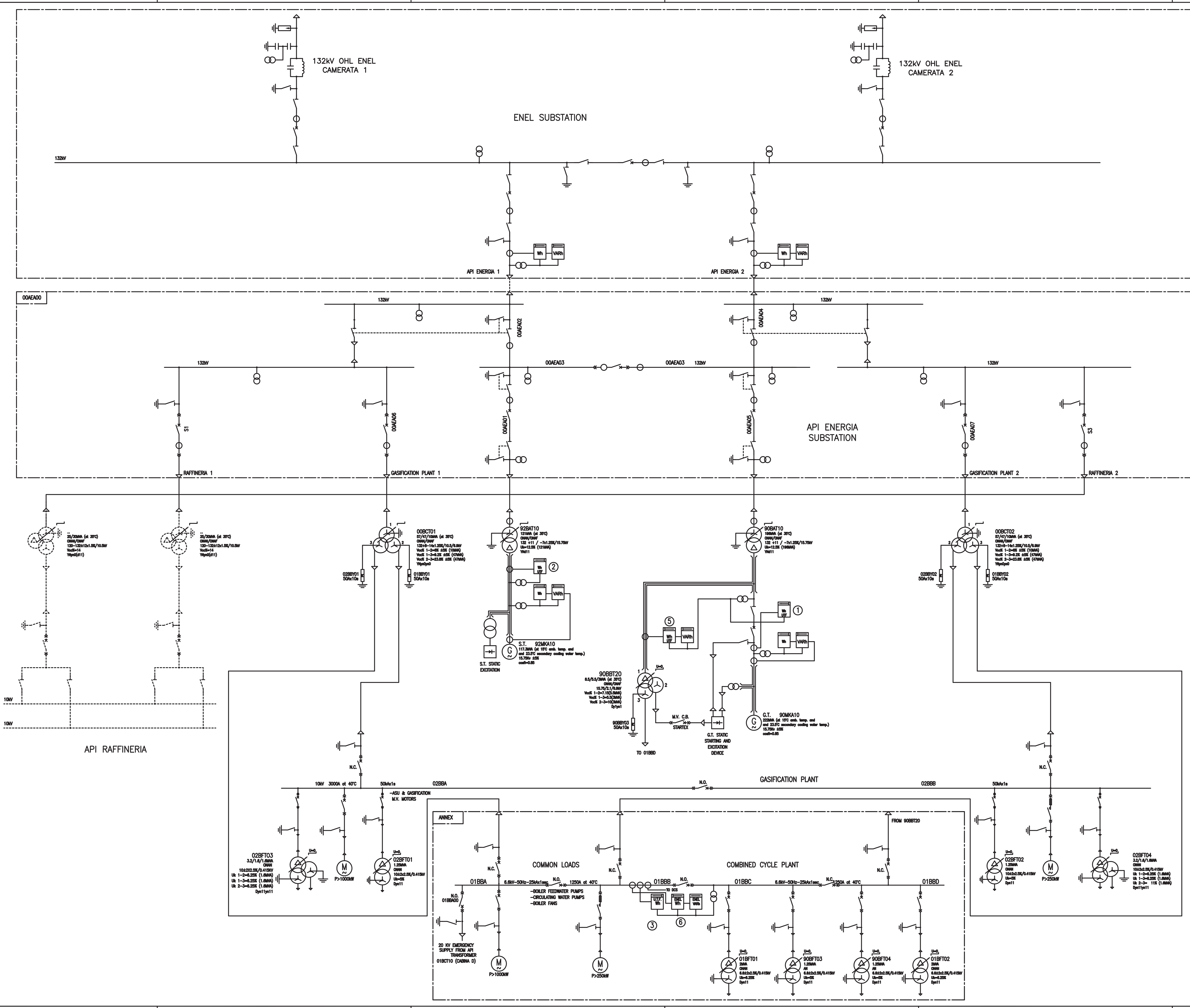
**ABB**  
 ABB SAE SADELMI SpA

THE DRAWINGS, SPECIFICATIONS, CALCULATIONS AND ALL OTHER MATERIALS AND INFORMATION CONTAINED IN AND SUBMITTED WITH THIS DOCUMENT ARE THE PROPERTY OF ABB SAE SADELMI SpA AND CONFIDENTIAL BY RECEIPT OF THIS DOCUMENT YOU AGREE NOT TO REPRODUCE IT IN WHOLE OR IN PART NOT REVEAL ITS CONTENTS EXCEPT TO MEMBERS OF YOUR COMPANY WHO HAVE A NEED TO KNOW.

SIZE	JOB #	AREA	WKS	SYSTEM	DOC. NO.	REV. NO.	SHEET NO.	TOTAL SHEETS
A0	1,2,3,7,2,0	A,1	0,0	A,E,A	E B G 0,0,1	1	1	1

**H.V. & M.V. SINGLE LINE DIAGRAM**

FORM NO.	JOB NUMBER	ORIG.	SUBJECT	DOC. NO.	REV. NO.	SHEET NO.	TOTAL SHEETS
A0	2372	A	E B G 0,0,1	0	1	1	1



LEGEND			
SYMBOL	DESCRIPTION	SYMBOL	DESCRIPTION
	WITHDRAWABLE CIRCUIT BREAKER		FIXED CIRCUIT BREAKER
	DISCONNECTING SWITCH		EARTHING RESISTOR
	GENERATOR		BUS DUCT
	POWER TRANSFORMER WITH TWO WINDINGS TRIANGLE - STAR		POWER TRANSFORMER WITH TWO WINDINGS STAR - TRIANGLE
	POWER TRANSFORMER WITH THREE WINDINGS		POWER TRANSFORMER WITH THREE WINDINGS
	VOLTAGE TRANSFORMER		CURRENT TRANSFORMER
	CABLE AND SEALING ENDS		SURGE ARRESTER
	CAPACITOR COUPLED VOLTAGE TRANSFORMER		LINE TRAP
	ON LOAD TAP CHANGER		OFF LOAD TAP CHANGER
	ACTIVE POWER ENERGY METERING (IMPORT - EXPORT)		REACTIVE POWER ENERGY METERING (IMPORT - EXPORT)
	ACTIVE POWER ENERGY METERING (ENERGY PURCHASED FROM ENEL)		REACTIVE POWER ENERGY METERING (ENERGY PURCHASED FROM ENEL)
	ACTIVE POWER ENERGY METERING (ENERGY SOLD TO ENEL)		REACTIVE POWER ENERGY METERING (ENERGY SOLD TO ENEL)
	LIMIT OF SUPPLY		BUS BAR

REFERENCE DRAWING			
2372 AE 7000 R0006	F	M.V./L.V. AND D.C. SYSTEM SINGLE LINE DIAGRAM	
2372 AE 7000 R0001	F	PROTECTION METERING AND MEASURING SINGLE LINE DIAGRAM G.T. & S.T.	
2372 AE 7000 R0004	F	132kV SINGLE LINE DIAGRAM SYSTEM PROTECTION/METERING KEY DIAGRAM	
2372 AE 7000 R0007	D	H.V./M.V./L.V. SYSTEM KEY DIAGRAM	
2372 AE 7000 E1022	C	ENEL UTF WATTHOURS & WATTHOURS METER ELECTRIC DIAGRAM	

NOTES			
<b>Schema unifilare FUTURO</b>			
REV. "D" ISSUED FOR CONSTRUCTION TO OWNER / OWNER'S ENGINEER FOR INFORMATION ONLY			

REV.	DATE	DESCRIPTION	BY	CHECKED	APPROVED
F	15/12/00	AS BUILT BY REQUIRED API ENERGA			
E	05/12/00	AS BUILT			
D	09/10/99	ASBUILT METERS			
C	25/07/99	REVISED WERE SUBMITTED			
B	04/04/97	ACCORDING ENEL M.O.M. 12/02/97			
A	18/09/96	FIRST ISSUE			

**API REFINERY FALCONARA - ITALY**  
**INTEGRATED GASIFICATION AND COMBINED CYCLE PROJECT**

**TEMPORARY ASSOCIATION OF COMPANIES:**  
 ABB SAE SADELM (MILAN, ITALY)  
 ABB LUMMUS GLOBAL (WIESSBADEN, GERMANY)  
 ABB POWER GENERATION (BADEN, SWITZERLAND)

THE DRAWINGS, SPECIFICATIONS, CALCULATIONS AND ALL OTHER MATERIALS AND INFORMATION CONTAINED IN AND SUBMITTED WITH THIS DOCUMENT ARE THE PROPERTY OF ABB SAE SADELM SPA AND CONFIDENTIAL. IN RECEIPT OF THIS DOCUMENT YOU AGREE NOT TO REPRODUCE IT IN WHOLE OR IN PART NOR REVEAL ITS CONTENTS EXCEPT TO MEMBERS OF YOUR COMPANY WHO HAVE A NEED TO KNOW.

**H.V. & M.V. SINGLE LINE DIAGRAM**

DATE: 18/05/96

PROJECT: 001

REF: A|0|2|3|7|2|0|A|0|0|A|E|A|E|B|G|0|0|1|F|