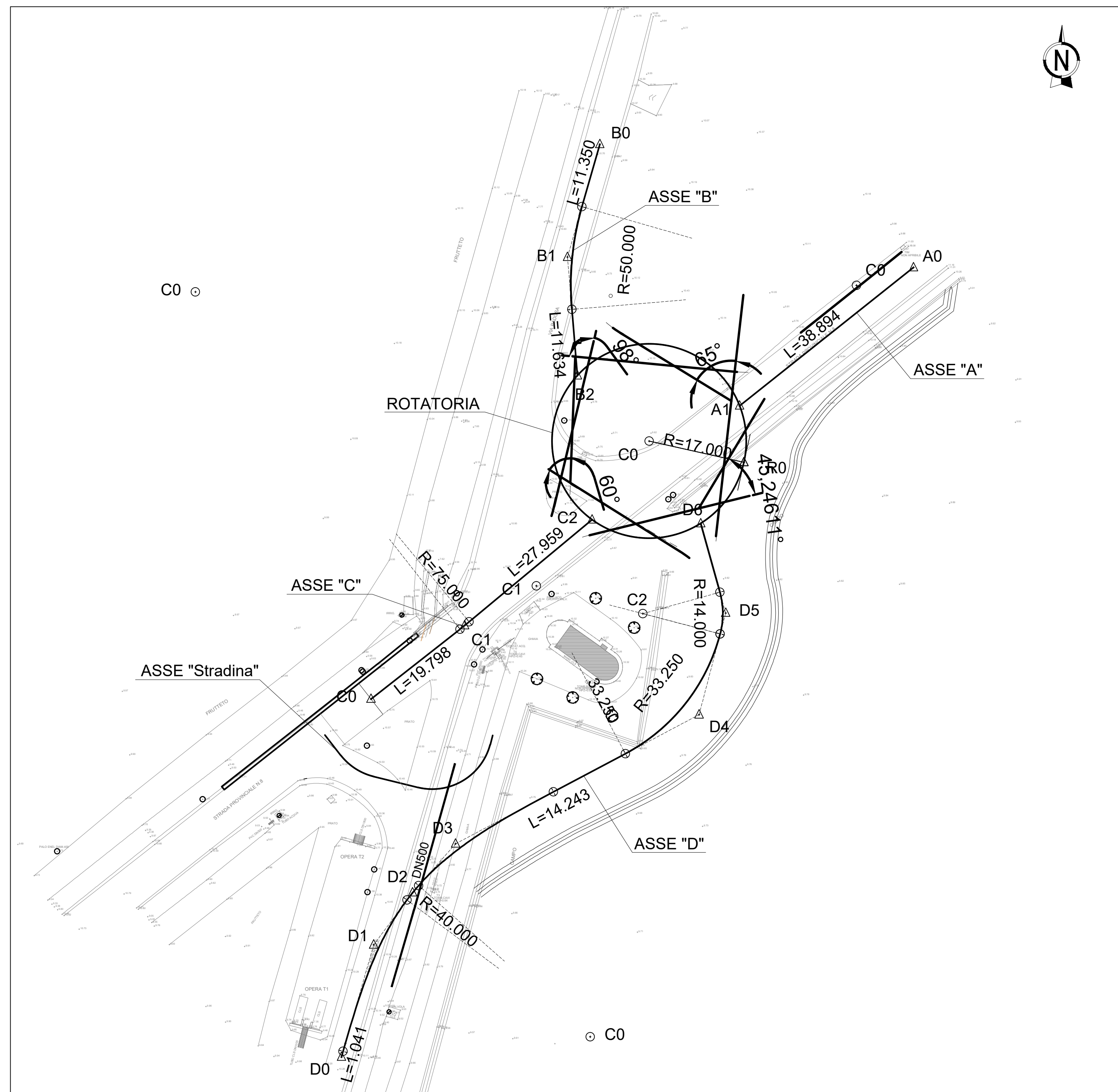


### PLANIMETRIA STATO ATTUALE E TRACCIAMENTO

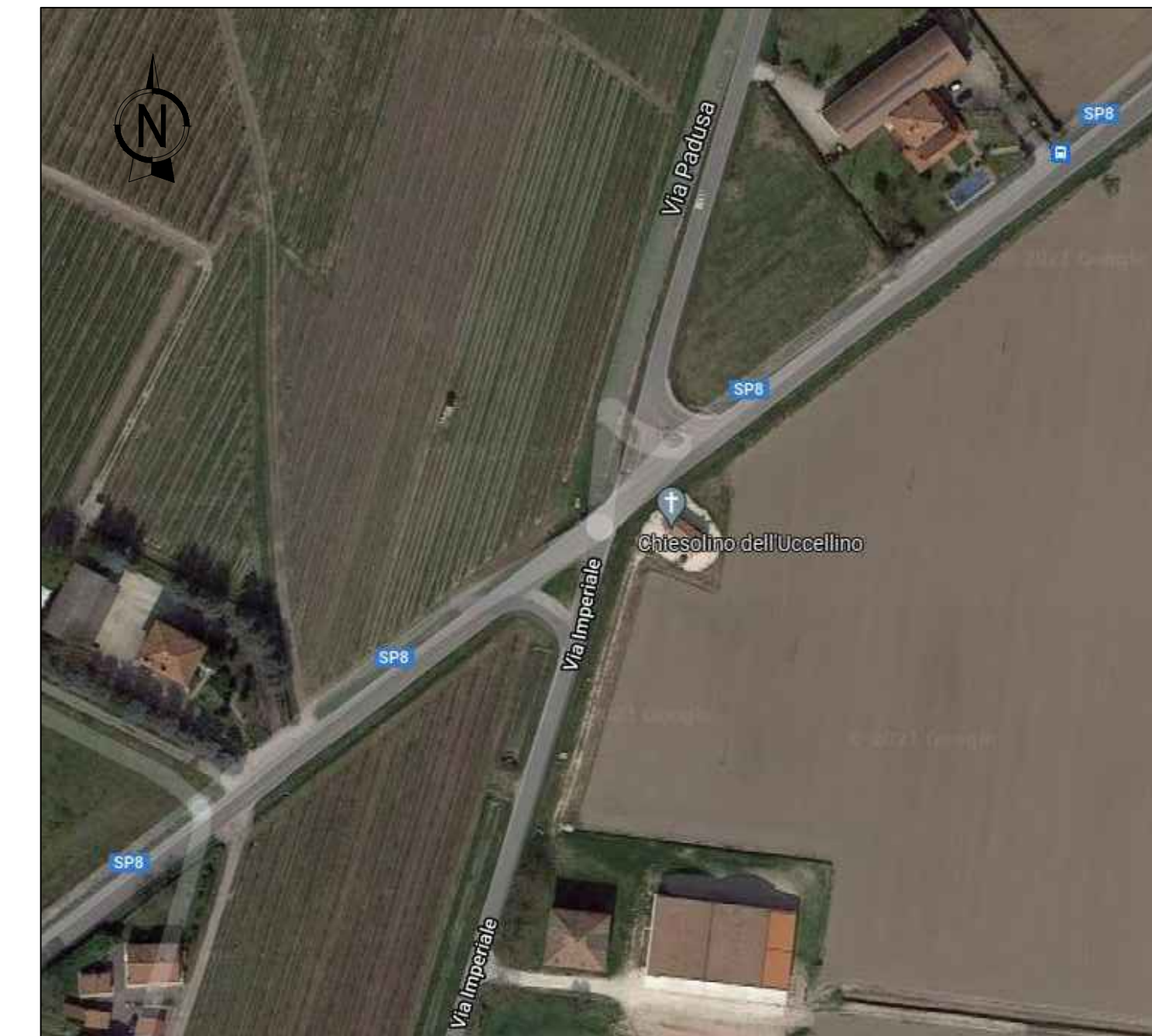
Scala 1:500



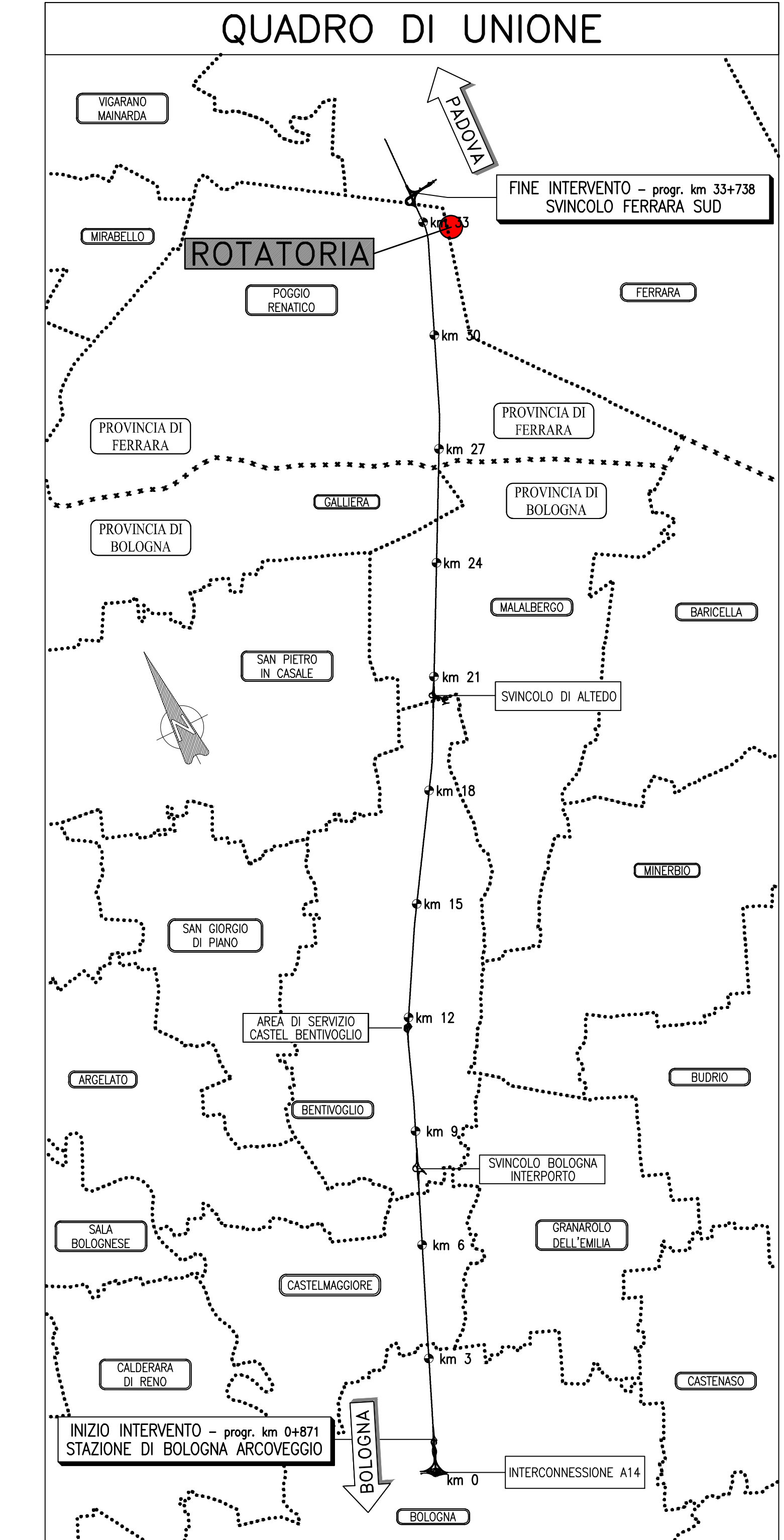
### DATI DI TRACCIAMENTO

AD 9910130.426 3188914.824	A1 9910099.984 3188890.617	ASSE "A"																											
BO 9910075.519 3188936.373	B1 9910069.861 3188916.635	B2 9910071.610 3188895.891																											
ASSE "B"		<table border="1"> <tr><td>C0</td><td>9910120.456</td><td>3188911.685</td></tr> <tr><td>R</td><td>50.000</td><td></td></tr> <tr><td>Ac</td><td>20.8142261</td><td></td></tr> <tr><td>Tan</td><td>9.183</td><td></td></tr> <tr><td>Sv</td><td>18.164</td><td></td></tr> <tr><td>Fr</td><td>0.823</td><td></td></tr> <tr><td>Co</td><td>18.064</td><td></td></tr> </table>				C0	9910120.456	3188911.685	R	50.000		Ac	20.8142261		Tan	9.183		Sv	18.164		Fr	0.823		Co	18.064				
C0	9910120.456	3188911.685																											
R	50.000																												
Ac	20.8142261																												
Tan	9.183																												
Sv	18.164																												
Fr	0.823																												
Co	18.064																												
CO 9910035.474 3188839.314	C1 9910051.859 3188852.170	C2 9910074.164 3188870.682																											
ASSE "C"		<table border="1"> <tr><td>C0</td><td>9910004.752</td><td>3188910.540</td></tr> <tr><td>R</td><td>75.000</td><td></td></tr> <tr><td>Ac</td><td>1.5715896</td><td></td></tr> <tr><td>Tan</td><td>1.029</td><td></td></tr> <tr><td>Sv</td><td>2.057</td><td></td></tr> <tr><td>Fr</td><td>0.007</td><td></td></tr> <tr><td>Co</td><td>2.057</td><td></td></tr> </table>				C0	9910004.752	3188910.540	R	75.000		Ac	1.5715896		Tan	1.029		Sv	2.057		Fr	0.007		Co	2.057				
C0	9910004.752	3188910.540																											
R	75.000																												
Ac	1.5715896																												
Tan	1.029																												
Sv	2.057																												
Fr	0.007																												
Co	2.057																												
ASSE "ROTATORIA"		<table border="1"> <tr><td>C0</td><td>9910100.747</td><td>3188880.726</td></tr> <tr><td>R</td><td>17.000</td><td></td></tr> <tr><td>Ac</td><td>359.9966297</td><td></td></tr> <tr><td>Tan</td><td>0.001</td><td></td></tr> <tr><td>Sv</td><td>100.813</td><td></td></tr> <tr><td>Fr</td><td>0.000</td><td></td></tr> <tr><td>Co</td><td>0.001</td><td></td></tr> </table>				C0	9910100.747	3188880.726	R	17.000		Ac	359.9966297		Tan	0.001		Sv	100.813		Fr	0.000		Co	0.001				
C0	9910100.747	3188880.726																											
R	17.000																												
Ac	359.9966297																												
Tan	0.001																												
Sv	100.813																												
Fr	0.000																												
Co	0.001																												
DO 9910030.303 3188776.674	D1 9910035.946 3188796.321	D2 9910042.750 3188805.442	D3 9910050.272 3188813.981	D4 9910092.901 3188836.578	D5 9910097.550 3188854.362	D6 9910093.189 3188870.033																							
ASSE "D"		<table border="1"> <tr><td>D1</td><td>9910073.840</td><td>3188780.222</td></tr> <tr><td>N</td><td>1.000</td><td></td></tr> <tr><td>A</td><td>34.000</td><td></td></tr> <tr><td>Sv</td><td>28.901</td><td></td></tr> <tr><td>AngF</td><td>20.6985005</td><td></td></tr> <tr><td>m</td><td>0.866</td><td></td></tr> <tr><td>TI</td><td>19.400</td><td></td></tr> <tr><td>Tc</td><td>9.755</td><td></td></tr> </table>				D1	9910073.840	3188780.222	N	1.000		A	34.000		Sv	28.901		AngF	20.6985005		m	0.866		TI	19.400		Tc	9.755	
D1	9910073.840	3188780.222																											
N	1.000																												
A	34.000																												
Sv	28.901																												
AngF	20.6985005																												
m	0.866																												
TI	19.400																												
Tc	9.755																												
		<table border="1"> <tr><td>C1</td><td>9910064.425</td><td>3188859.116</td></tr> <tr><td>R</td><td>33.250</td><td></td></tr> <tr><td>Ac</td><td>47.4241196</td><td></td></tr> <tr><td>Tan</td><td>14.604</td><td></td></tr> <tr><td>Sv</td><td>27.521</td><td></td></tr> <tr><td>Fr</td><td>2.807</td><td></td></tr> <tr><td>Co</td><td>26.742</td><td></td></tr> </table>				C1	9910064.425	3188859.116	R	33.250		Ac	47.4241196		Tan	14.604		Sv	27.521		Fr	2.807		Co	26.742				
C1	9910064.425	3188859.116																											
R	33.250																												
Ac	47.4241196																												
Tan	14.604																												
Sv	27.521																												
Fr	2.807																												
Co	26.742																												
		<table border="1"> <tr><td>C2</td><td>9910083.049</td><td>3188854.248</td></tr> <tr><td>R</td><td>14.000</td><td></td></tr> <tr><td>Ac</td><td>30.1998266</td><td></td></tr> <tr><td>Tan</td><td>3.777</td><td></td></tr> <tr><td>Sv</td><td>7.379</td><td></td></tr> <tr><td>Fr</td><td>0.483</td><td></td></tr> <tr><td>Co</td><td>7.294</td><td></td></tr> </table>				C2	9910083.049	3188854.248	R	14.000		Ac	30.1998266		Tan	3.777		Sv	7.379		Fr	0.483		Co	7.294				
C2	9910083.049	3188854.248																											
R	14.000																												
Ac	30.1998266																												
Tan	3.777																												
Sv	7.379																												
Fr	0.483																												
Co	7.294																												

### ORTOFOTO

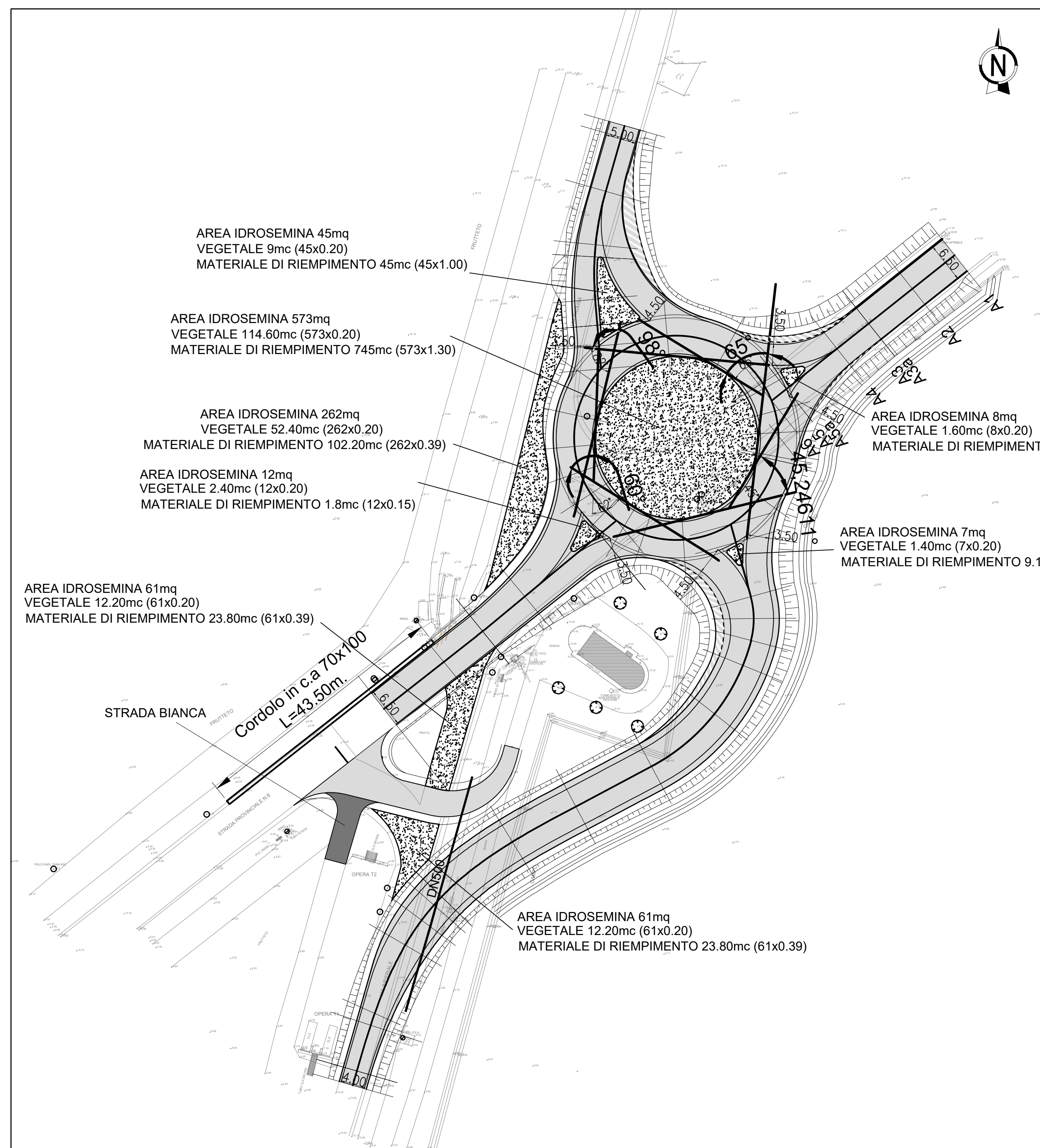


### QUADRO DI UNIONE



### PLANIMETRIA DI PROGETTO

Scala 1:500



### PLANIMETRIA DELLE LAVORAZIONI

Scala 1:500

