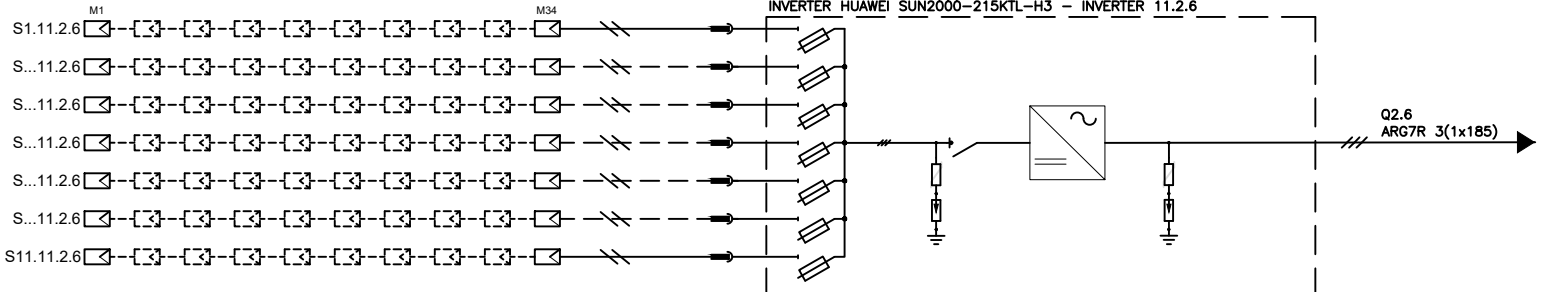
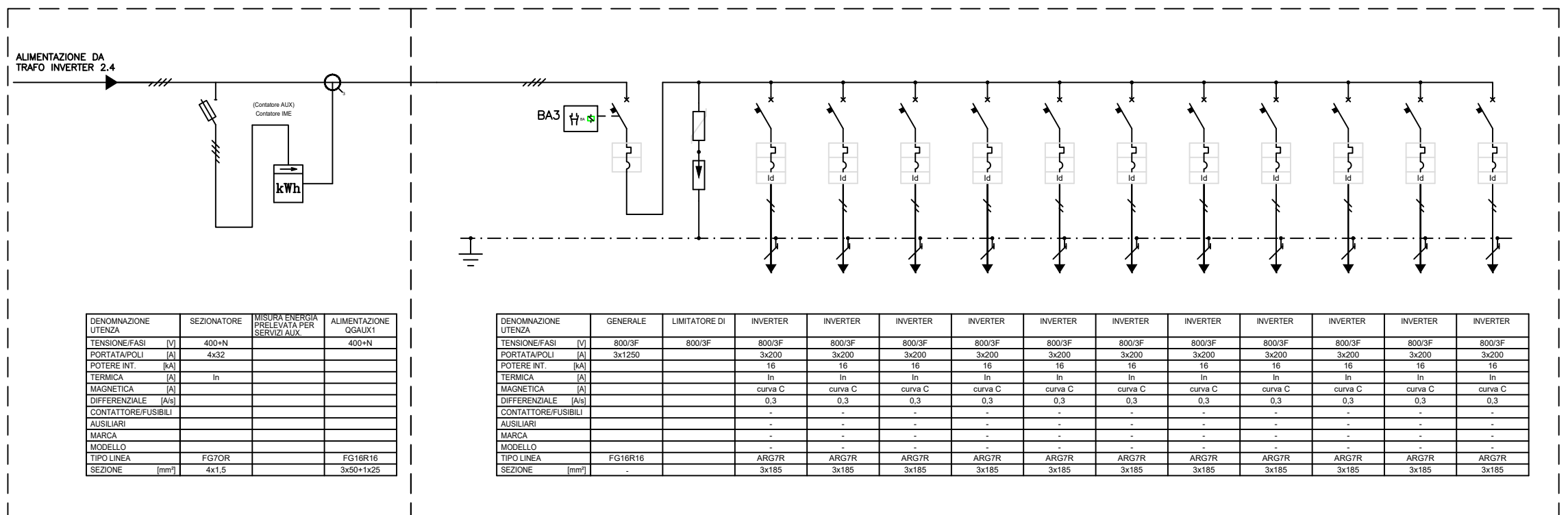
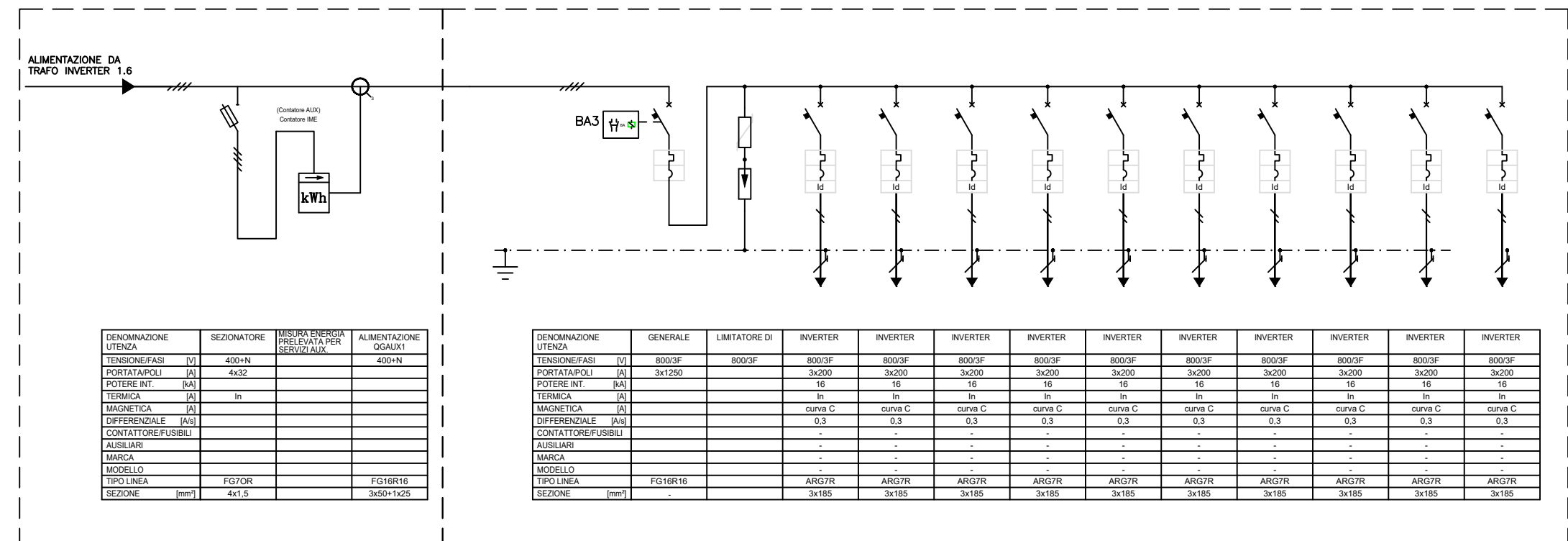


QUADRO CONTATORE PRODUZIONE 1.6 CABINA SC6

QUADRO GENERALE PARALLELO INVERTER Q1.6

QUADRO CONTATORE PRODUZIONE 2.6 CABINA SC6

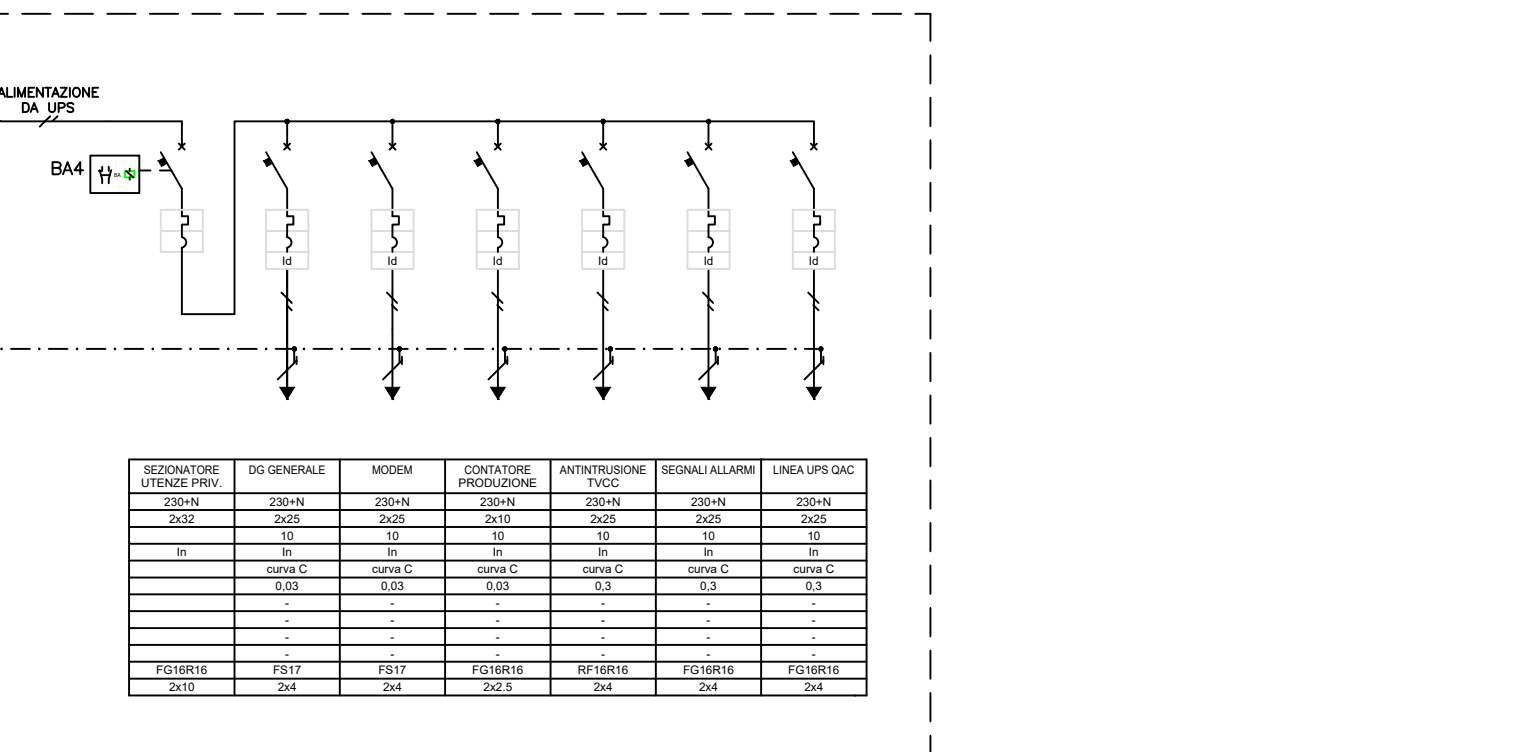
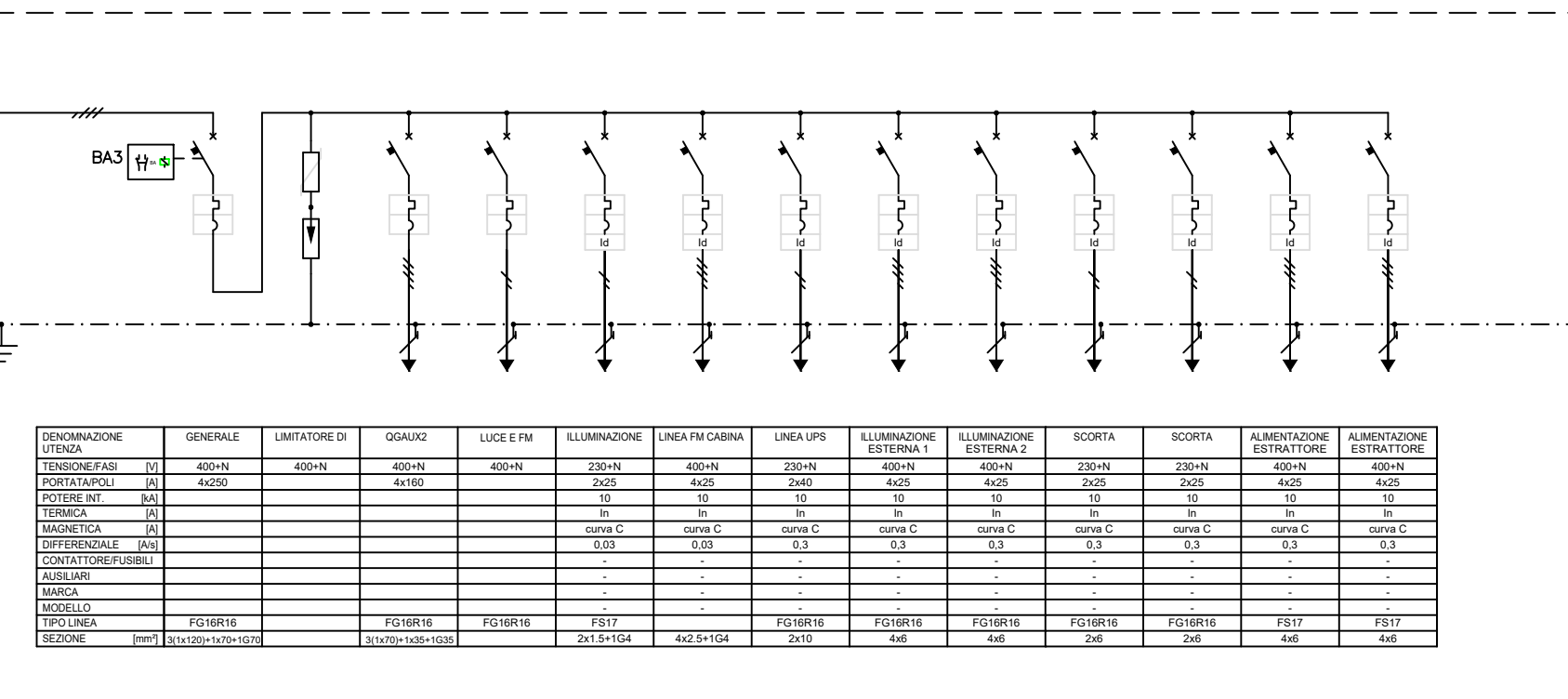
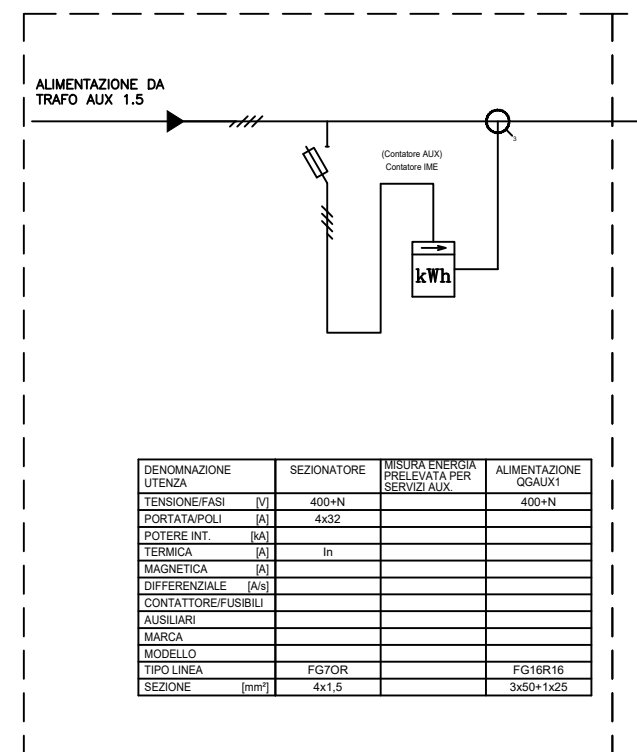
QUADRO GENERALE PARALLELO INVERTER Q2.6



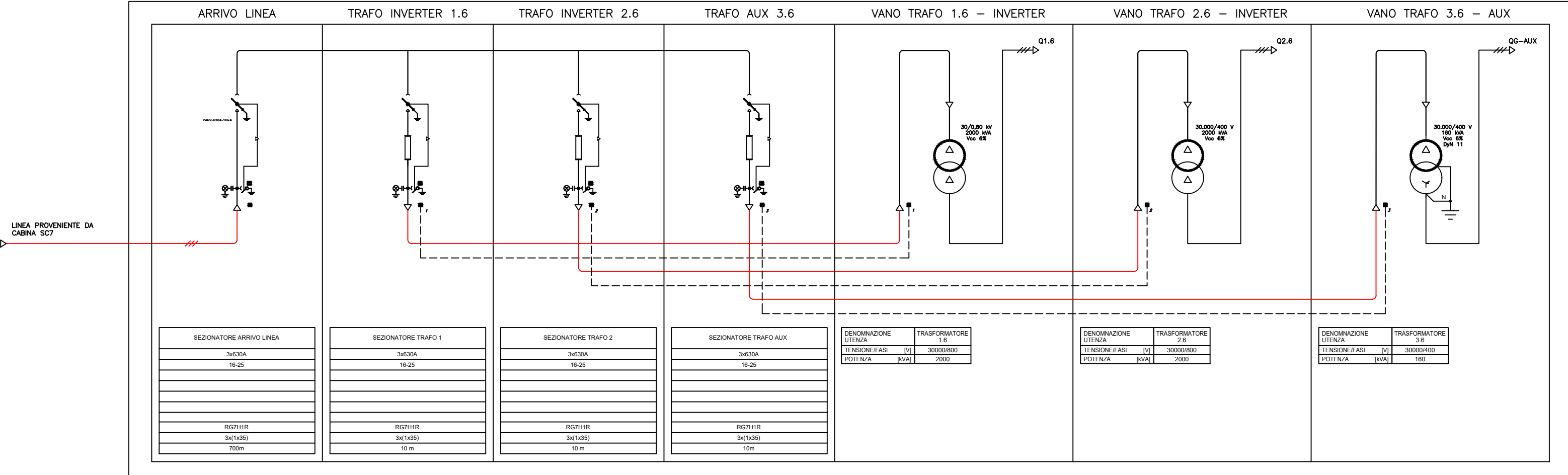
QUADRO CONTATORE SERVIZI AUX CABINA SC6



QUADRO SERVIZI AUX CABINA SC6

QUADRO SERVIZI AUX CABINA SC6 - LINEE PRIVILEGIATE



CABINA SOTTOCAMPO 6 - SC6



PROGETTO RELATIVO ALLA COSTRUZIONE ED ESERCIZIO DI UN IMPIANTO AGROVOLTAICO DI POTENZA PARI A 40,1 MWp E RELATIVO COLLEGAMENTO ALLA RETE ELETTRICA - IMPIANTO "ASCOLI 40" UBICATO IN AGRO DEL COMUNE DI ASCOLI SATRIANO (FG)

ELABORATO:

Schema elettrico Sottocampo 6

| IDENTIFICAZIONE ELABORATO | | | | | | |
|---------------------------|----------------------|---------|----------------|-----------|-------------|-------------|
| Level Prog | Code Ritracciabilità | Tip Doc | Sez. Elaborato | N° Foglio | N° Elaboro | DATA |
| DEF | 202000901 | EG | 08 | --- | EG_08B.06.6 | Agosto 2021 |

| REVISIONI | | | | |
|-----------|------|-------------|----------|------------|
| REV | DATA | DESCRIZIONE | ESEGUITO | VERIFICATO |
| | | | | |

MAYA ENGINEERING SRLS
C.F.P. IVA 08365980724
Dot. Ing. Vito Calio
Amministratore Unico
4, Via San Girolamo
70017 Putignano (BA)
M. + 39 082 4819015
E: v.calio@maya-eng.com
PEC: vito.calio@ingpec.eu

MAYA ENGINEERING SRLS
4, Via San Girolamo
70017 Putignano (BA)
C.F.P. IVA 08365980724
M. + 39 082 4819015
E: v.calio@maya-eng.com
(TIMBRE E FIRMA)

TECNICO SPECIALISTA
VITO CALIO
Sez. A - 6566
C.F. P. IVA 08365980724
70017 Putignano (BA)
M. + 39 082 4819015
E: v.calio@maya-eng.com
(TIMBRE E FIRMA)

SPAZIO RISERVATO AGLI ENTI

RICHIEDENTE
LUMINORA ASCOLI SRL
Via Tevere, 41
00198-Rome (RM)
P.IVA 16073251007
(TIMBRE E FIRMA PER BENESTARE)