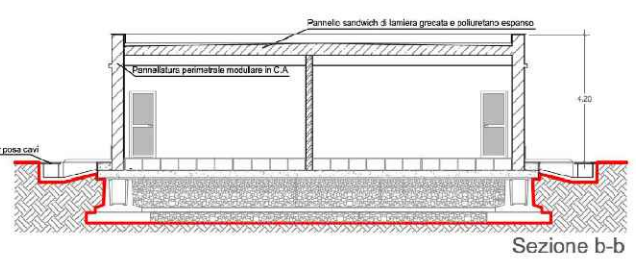
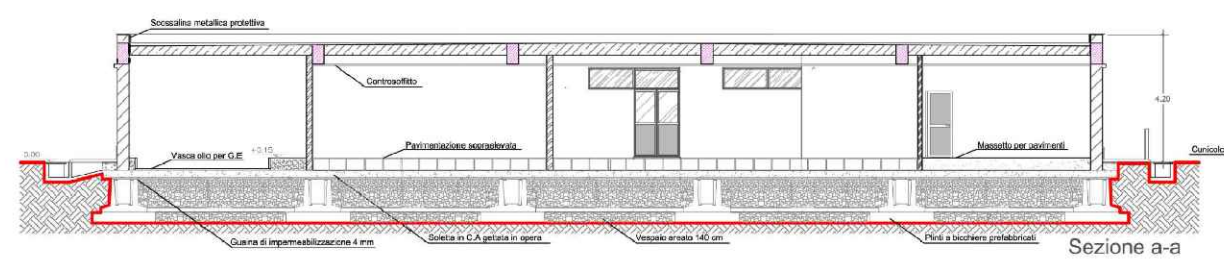
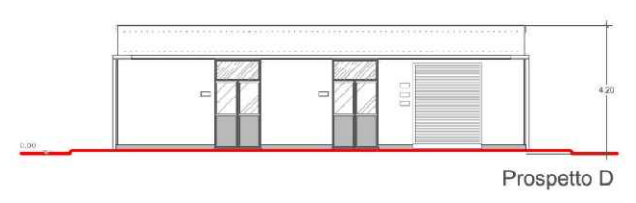
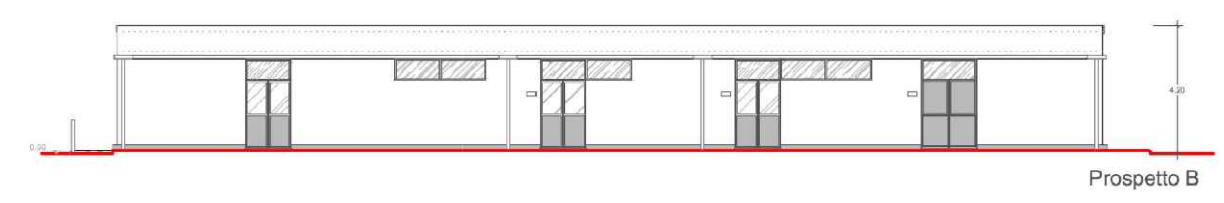
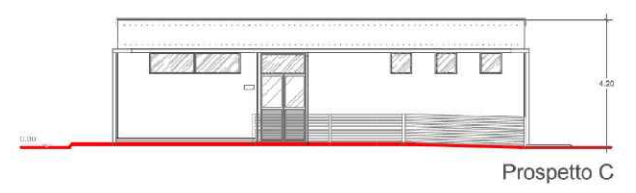


- Muri REI 120
- Tramezzi in calcestruzzo cellulare
- Pannellature perimetrali



| | | | | | |
|-----------|--------------------------|-------------|--|---------|---------------|
| 0 | Aprile 2021 | | | | |
| Revisione | Data | DESCRIZIONE | | 3E | WPD |
| Cliente | 3E Ingegneria S.r.l. | Commessa | Nuova stazione elettrica Sant'Arcangelo a 150 kV | Scala | 1:250 |
| | | Titolo | Edificio Integrato | Formato | Foglio |
| | | | Id. | | 076.20.01.W11 |