








LEGENDA

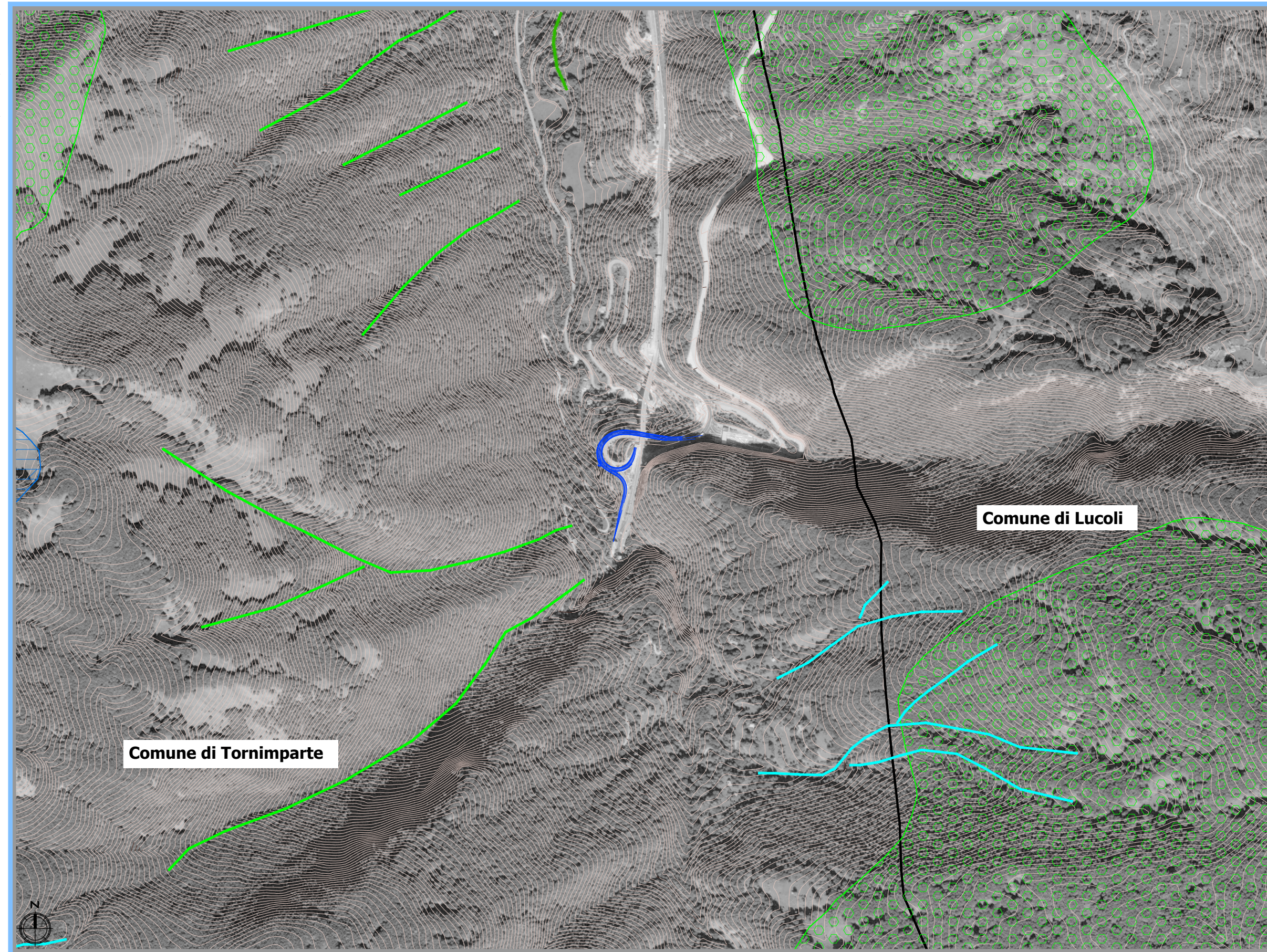
-  Progetto

-  Confini comunali

Carta geomorfologica

-  Campo di doline
-  Doline
-  Orlo di scarpata di erosione fluviale o torrentizia, non attiva
-  Solco da ruscellamento concentrato, attivo
-  Solco da ruscellamento concentrato, quiescente

Fonte: Regione Abruzzo, Carta geomorfologica allegata al PAI dei Bacini di Rilievo Regionale Abruzzesi - Autorità dei bacini regionali e interregionale Fiume Sangro - shapefile



Comune di Tornimparte

Comune di Lucoli