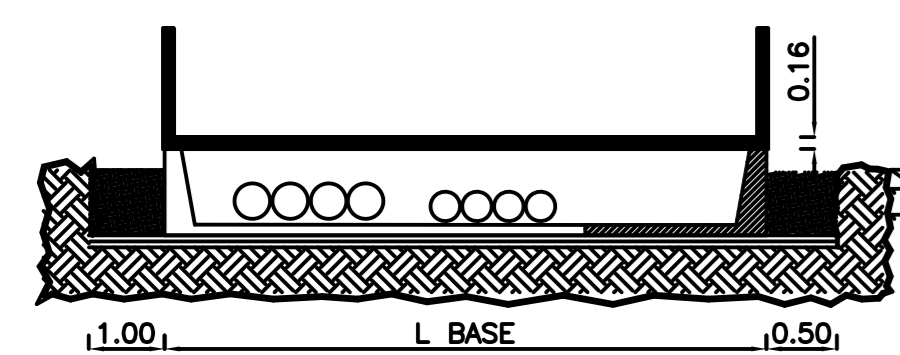
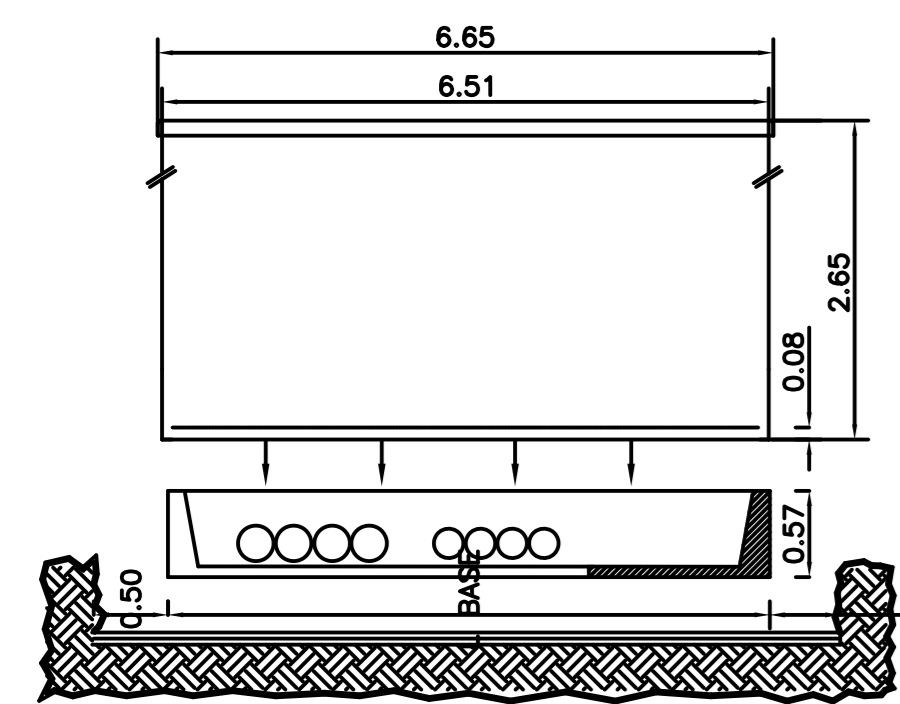
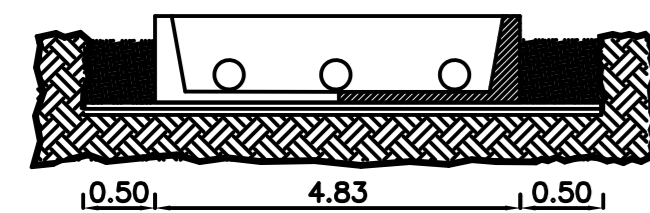
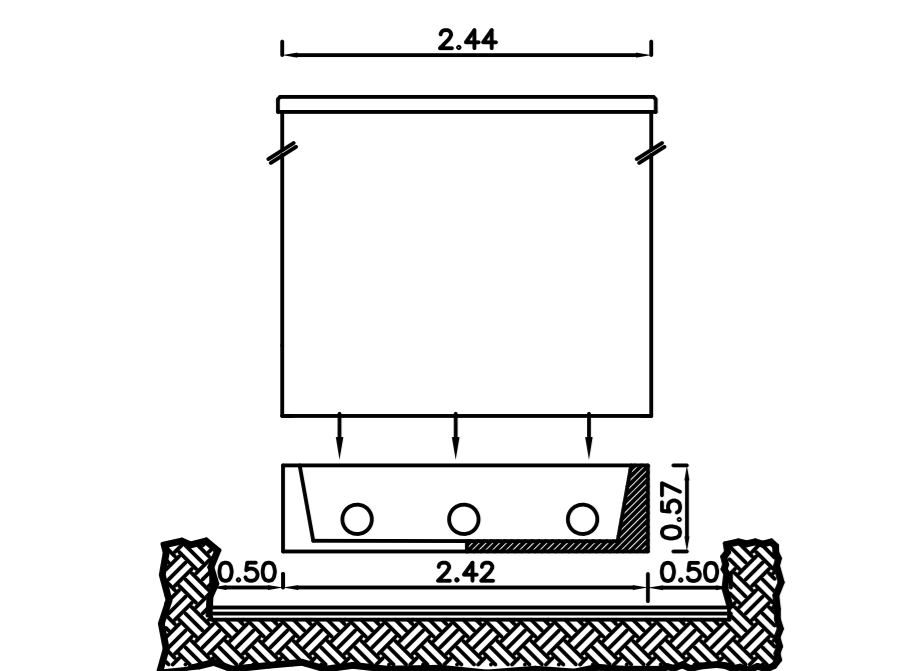
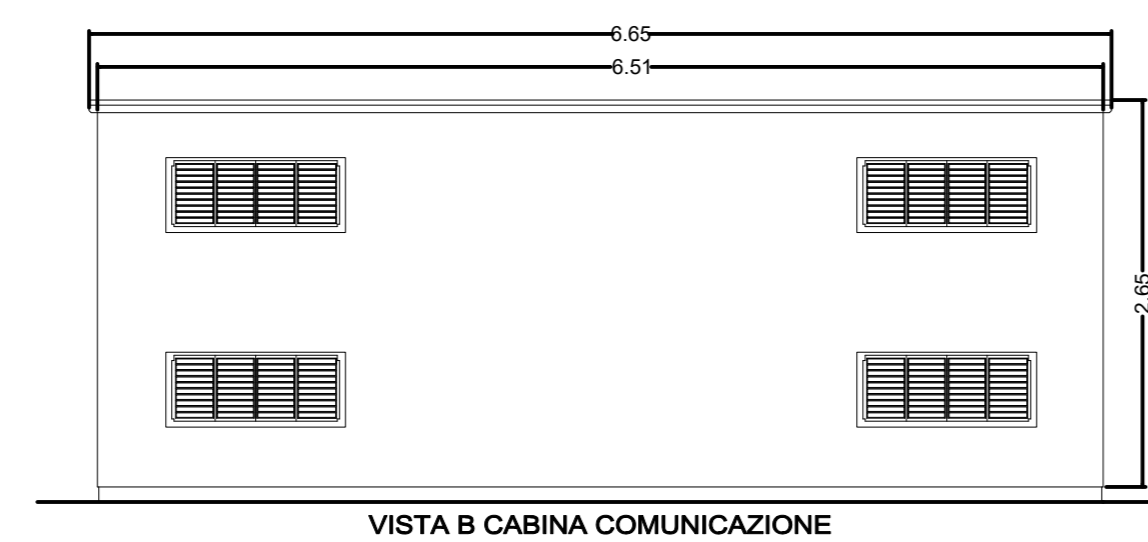
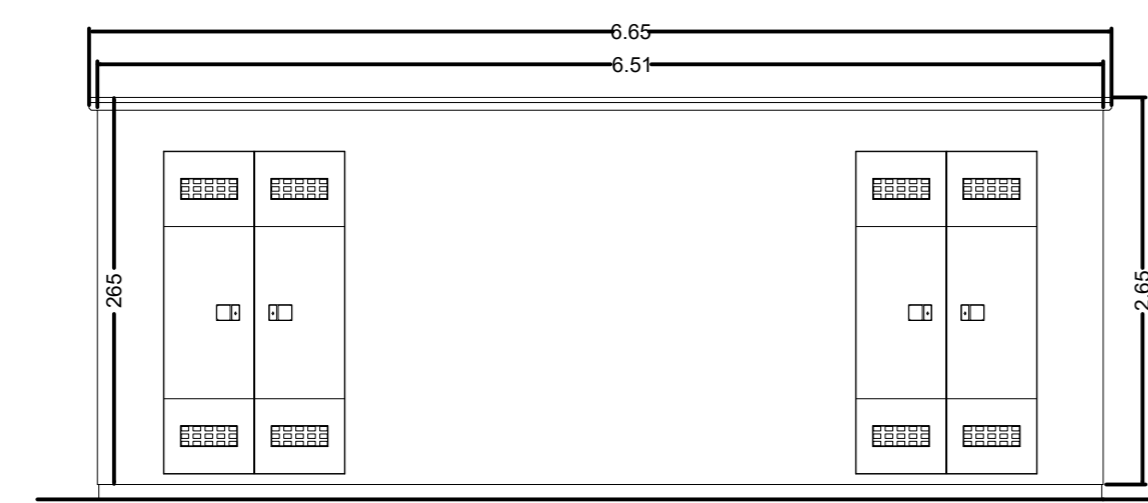
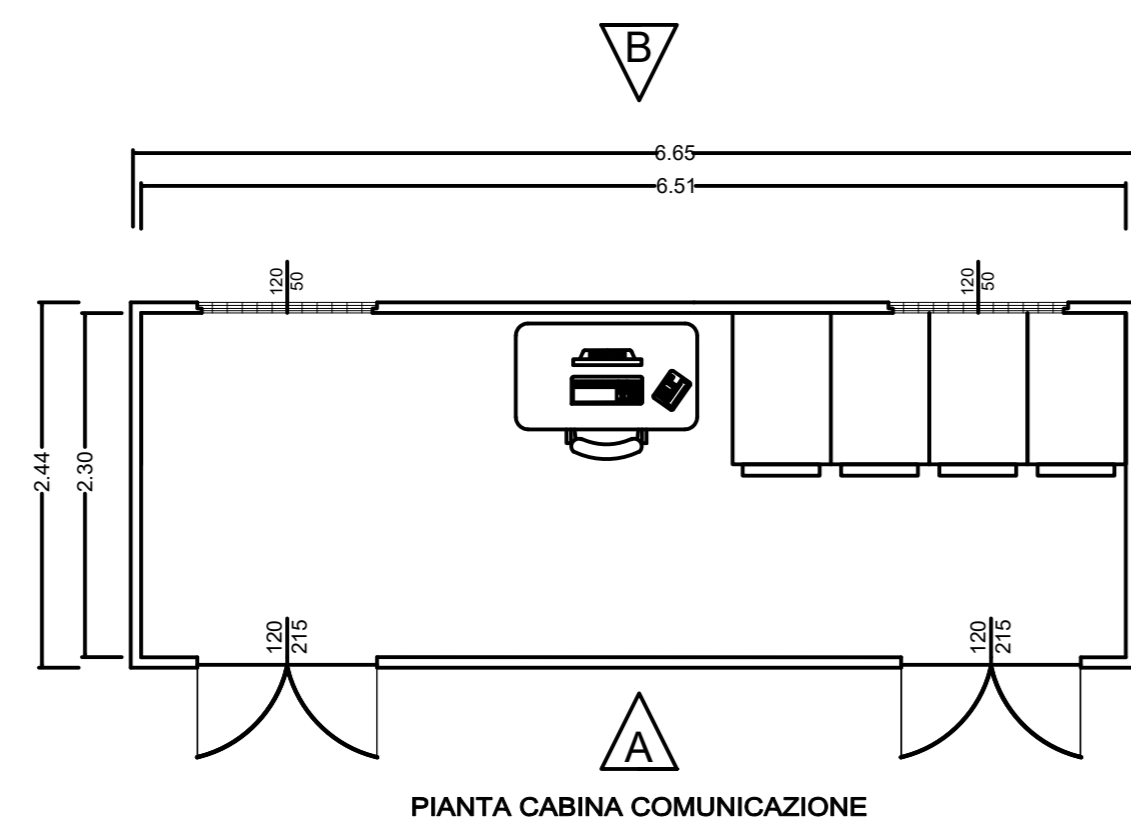


PARTICOLARE LOCALE CONTROLLO - IMPIANTO

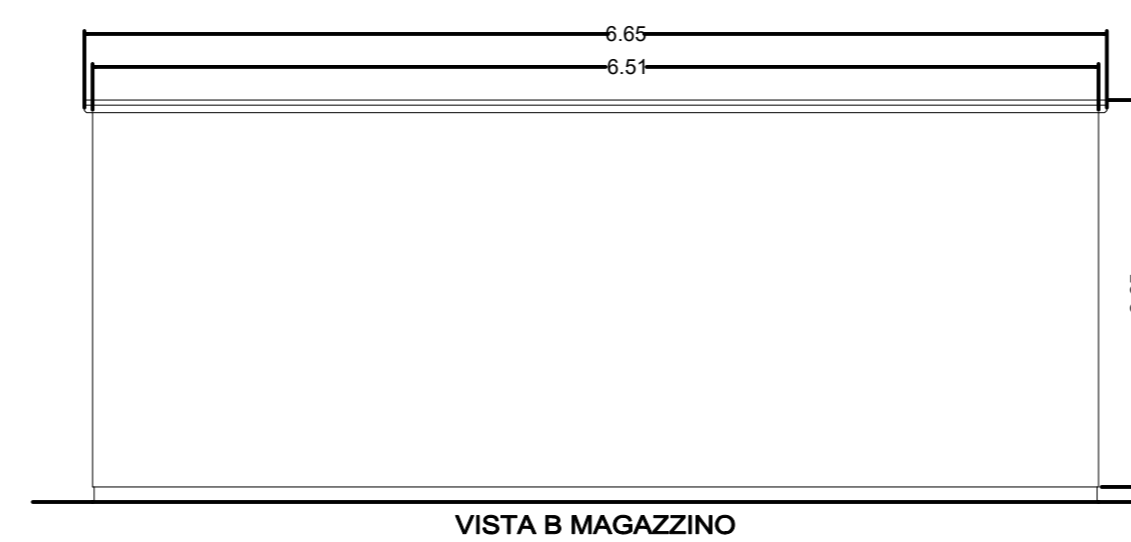
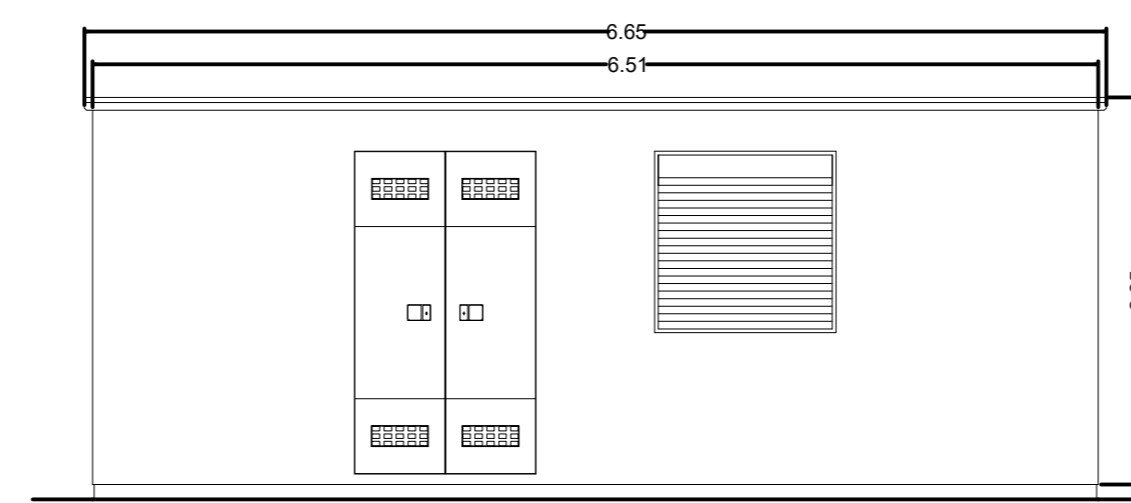
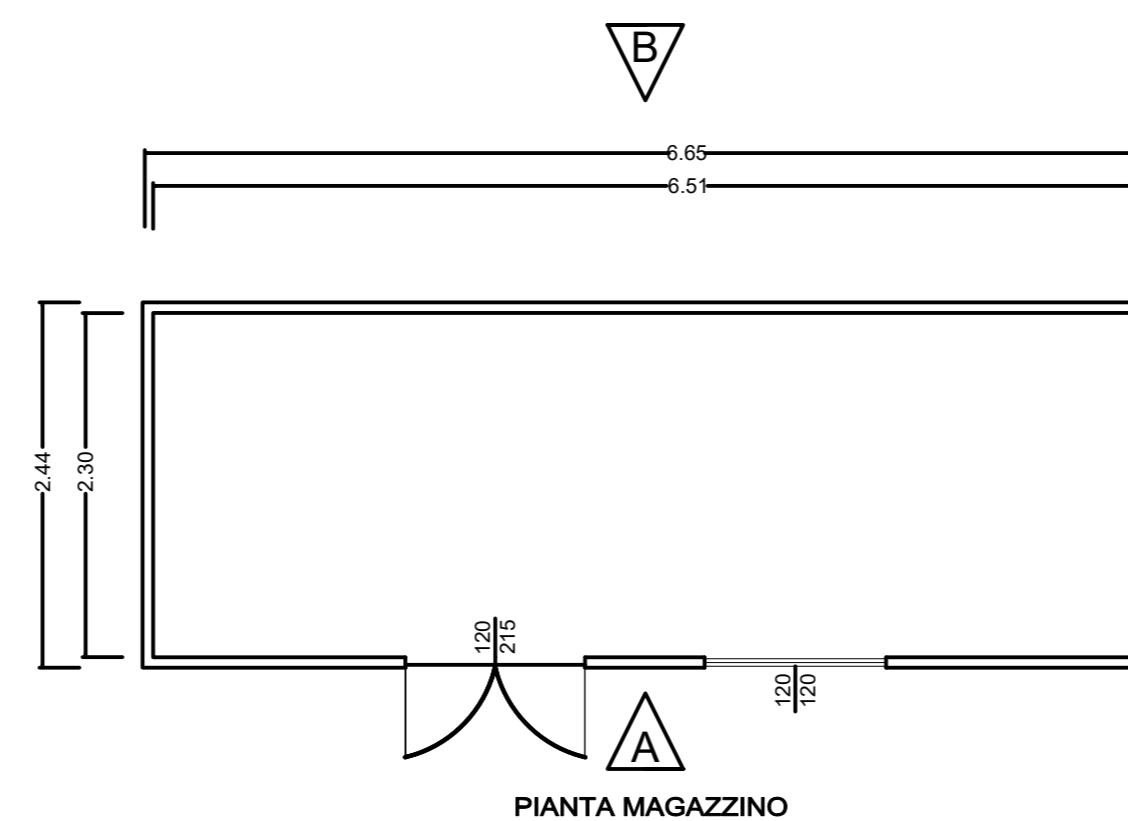
SISTEMA DI POSA DELLA CABINA



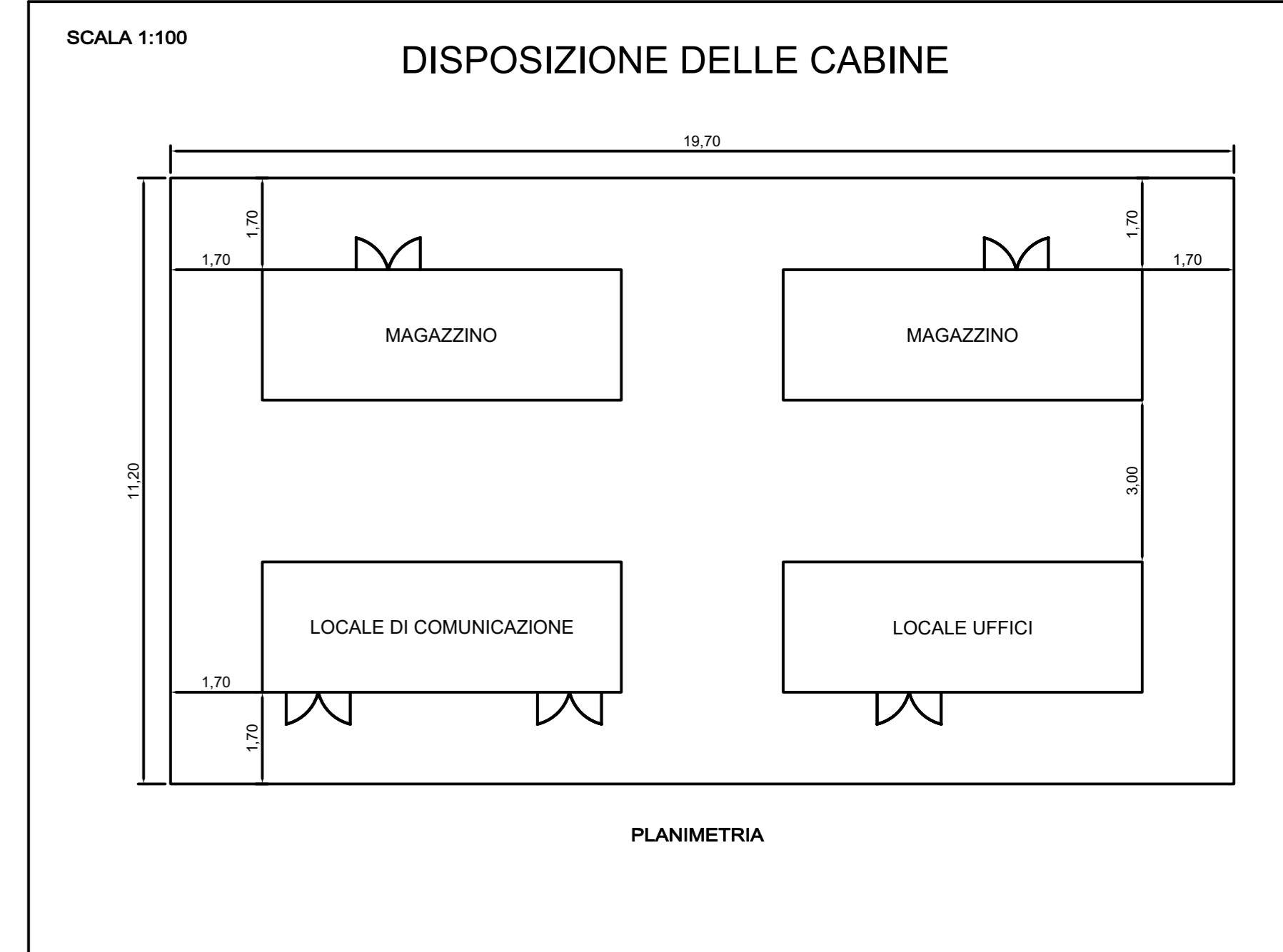
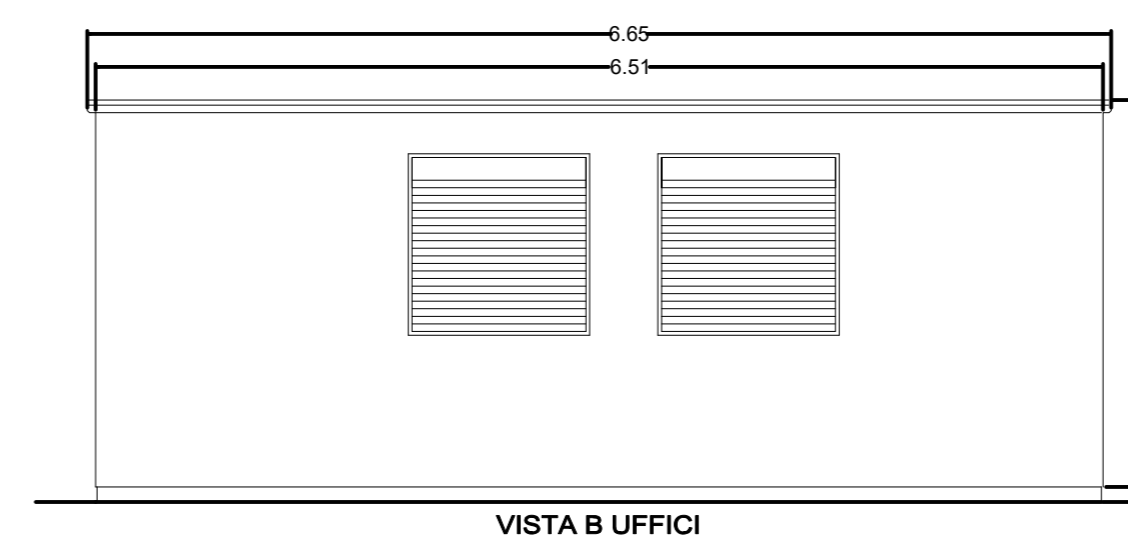
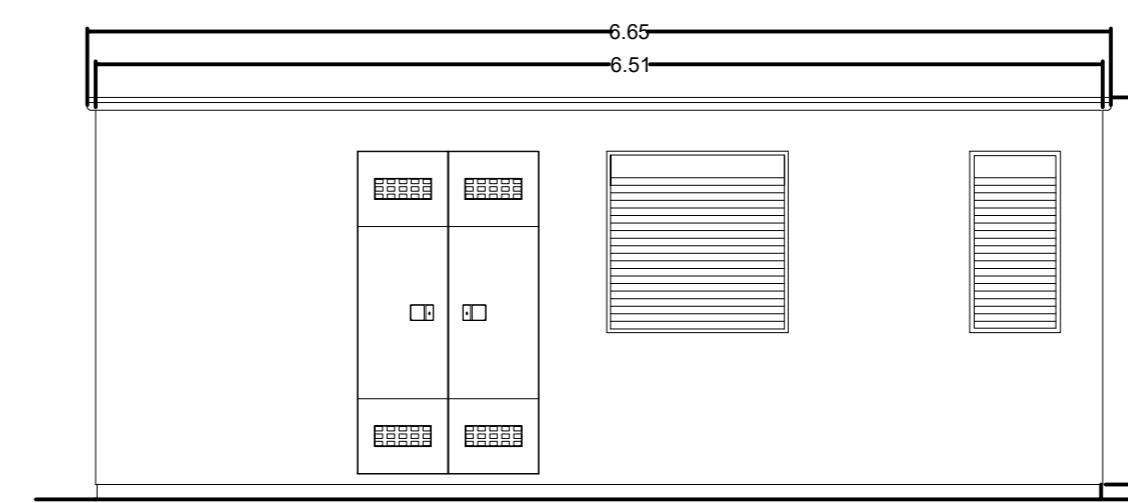
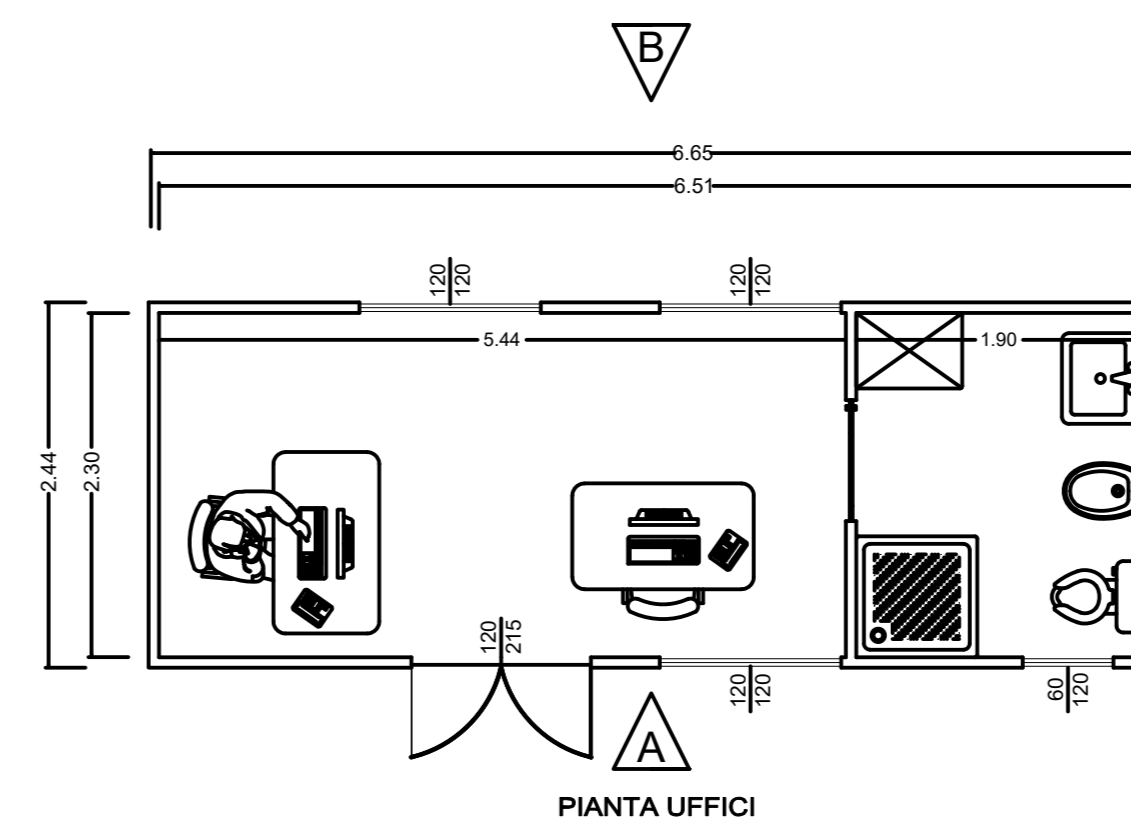
LOCALE COMUNICAZIONE



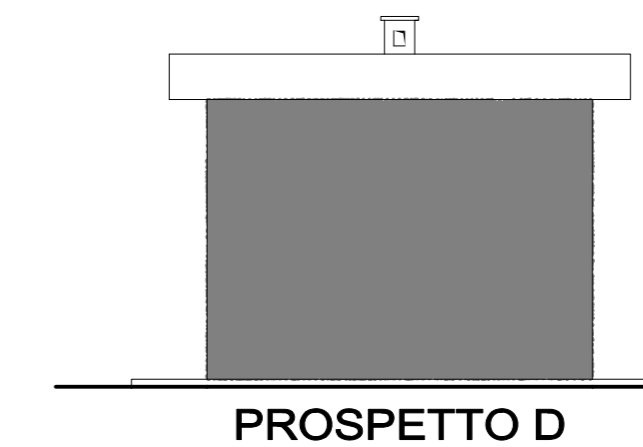
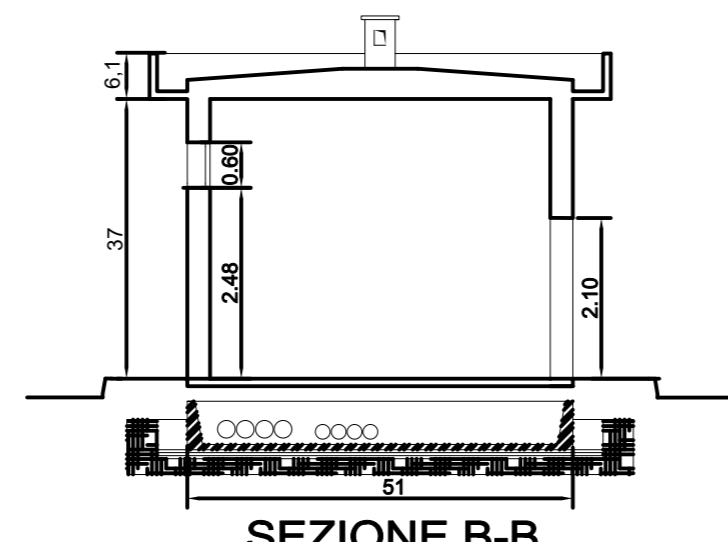
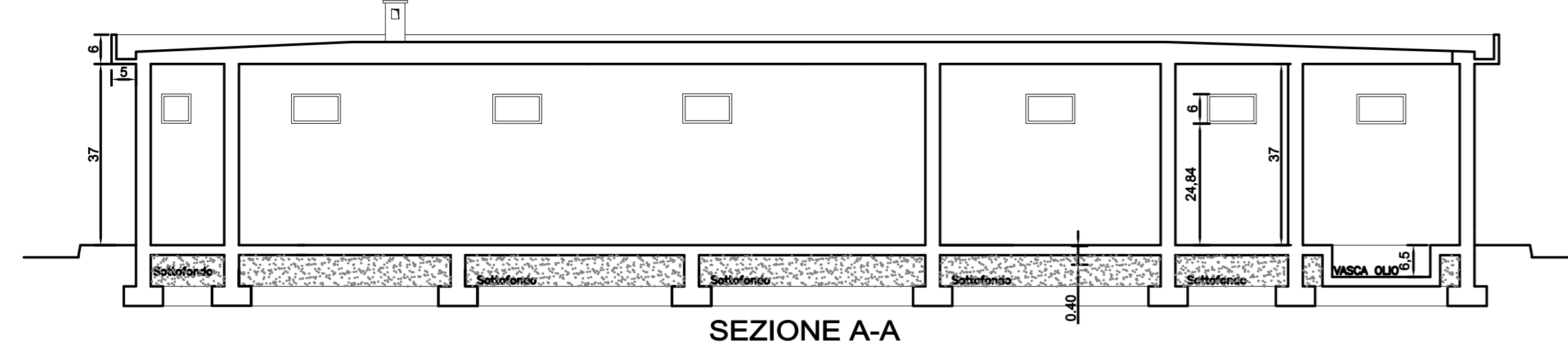
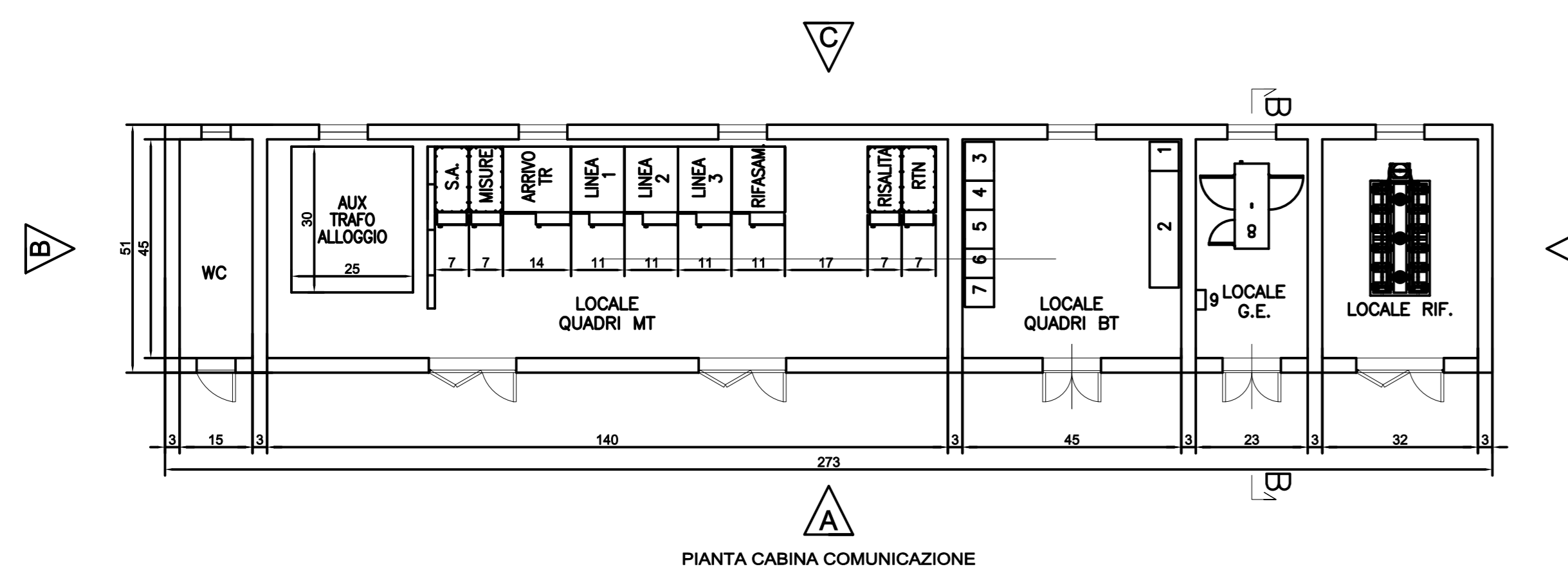
MAGAZZINO



UFFICIO



PARTICOLARE LOCALE CONSEGNA - STAZIONE UTENTE



REGIONE SICILIA
CITTA' METROPOLITANA DI PALERMO
LIBERO CONSORZIO COMUNALE DI TRAPANI

PROGETTO: Località Impianto
COMUNE DI MONREALE (PA) E COMUNE DI CAMPOREALE (PA)
CONTRADE TERMINI, MANDRANOVA E PIZZILLO
Località Connessione
COMUNE DI GIBELLINA (TP) CONTRADA CASUZZE

OGGETTO: **PROGETTO DEFINITIVO**
Realizzazione impianto agro-fotovoltaico denominato "S&P 8" con
potenza di picco 317.679,60 kWp e potenza nominale 250.000 kW

CODICE ELABORATO:	PROVA IN IE	IPPOLOGIA DOCUMENTO:	PROGRESSIVO:	REV:	DATA:
SP8	EPD	007	007	00	30/07/2021
EPD - ELABORAZIONE PROGETTO DEFINITIVO:	REL - RELAZIONE:	IST - ISTANZA:			
ADD - ALTRA DOCUMENTAZIONE:					

ELABORATO: SP8EPD007_00-SeP_8-IMPIANTO-IT-CMCU-particolare_locale_consegna_misura_controllo_e_utente

TAV: EPD007

PROGETTISTI: Ing. Sapienza Angelo

INGEGNERE

ING. Sapienza Angelo

SOCIETA': S&P 8 S.R.L.
SICILIA E PROGRESSO
Sede legale: Corso dei Mille 312 90047 Partinico (PA)
C.F.: 0691370829 tel.: 091965917 - fax: 091892055
email: svilupposp8@gmail.com
pec: svilupposp8@sp8.it

SP8
SICILIA E PROGRESSO