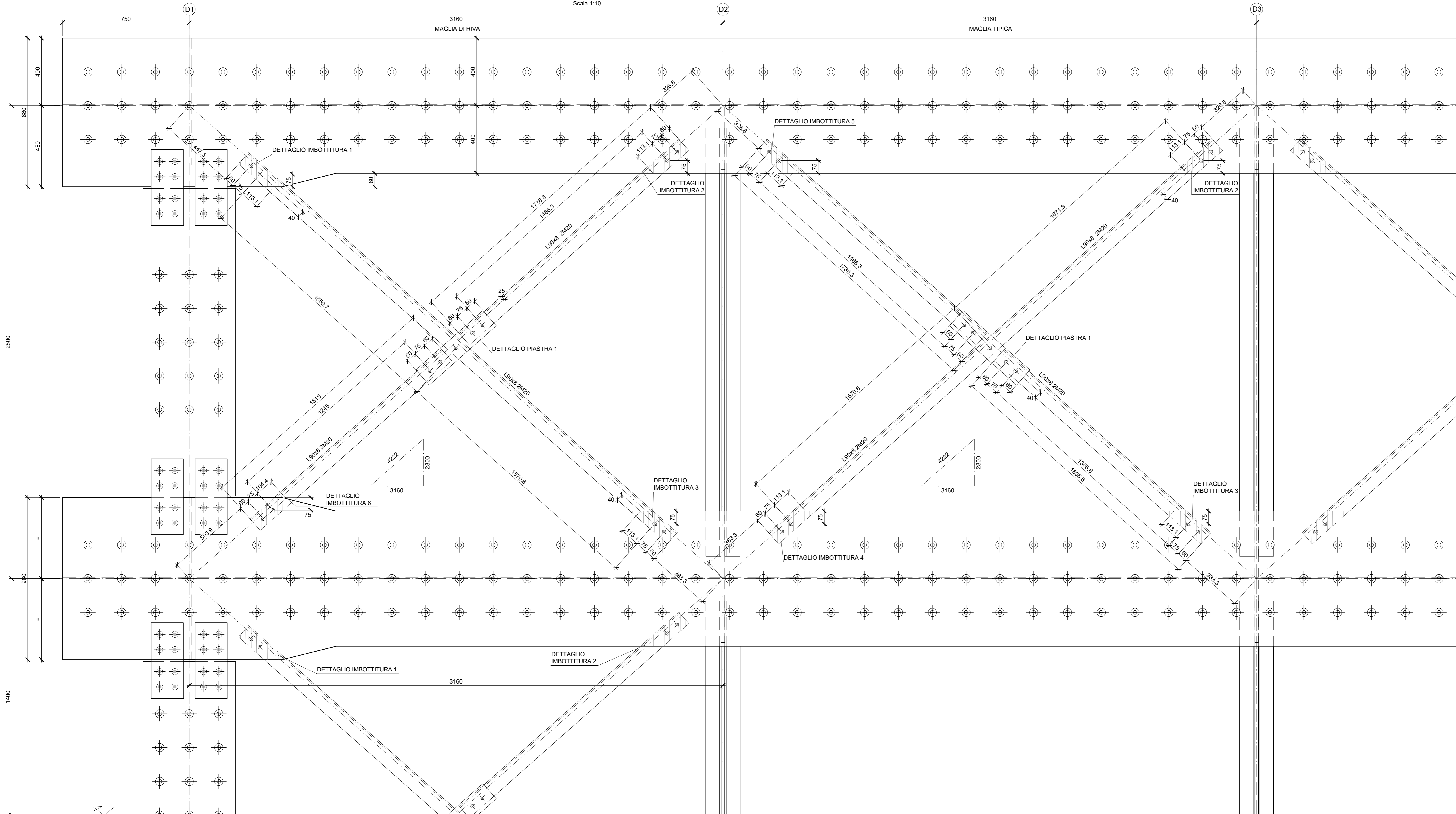


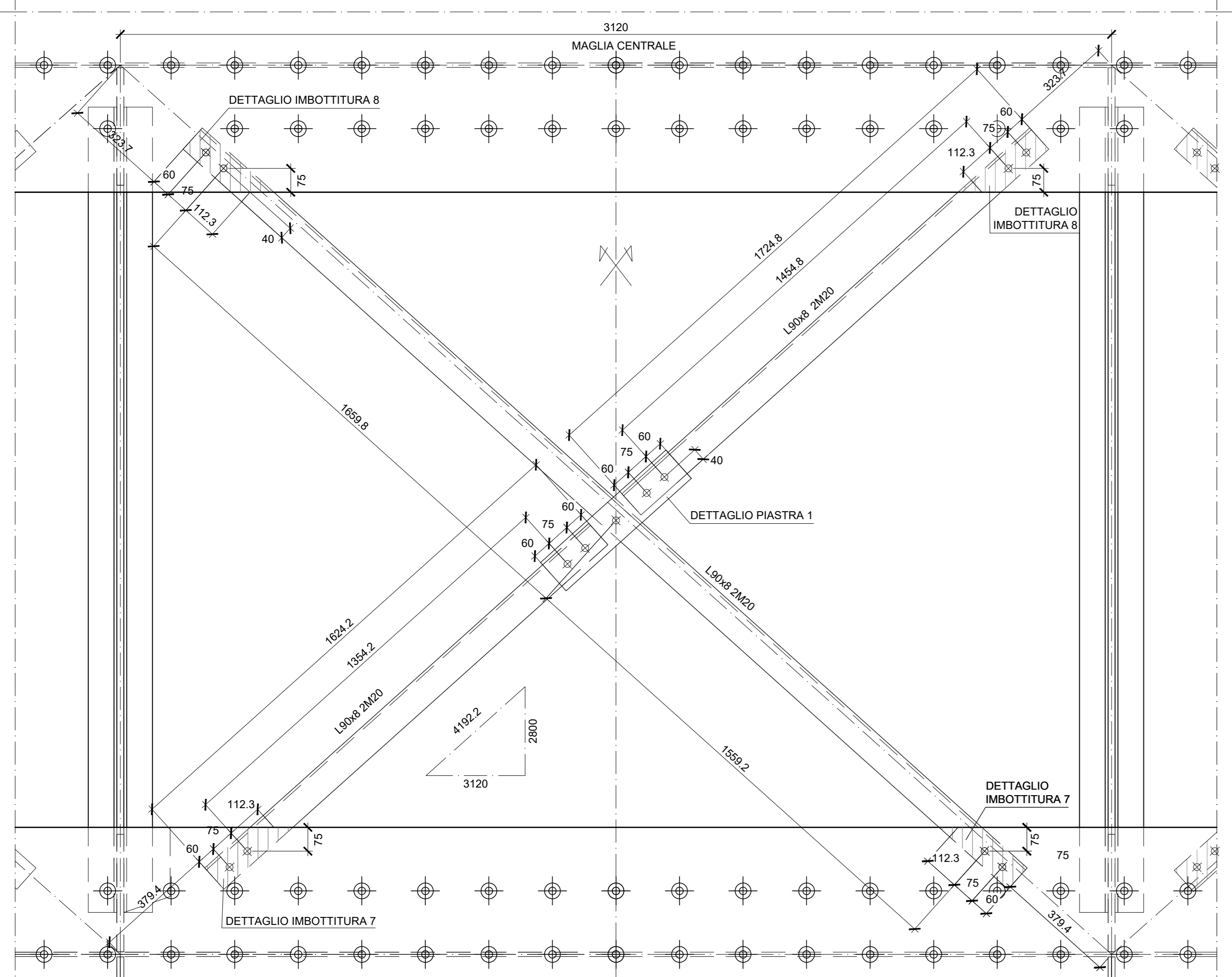
CONTOVENTATURA SUPERIORE

Scala 1:10



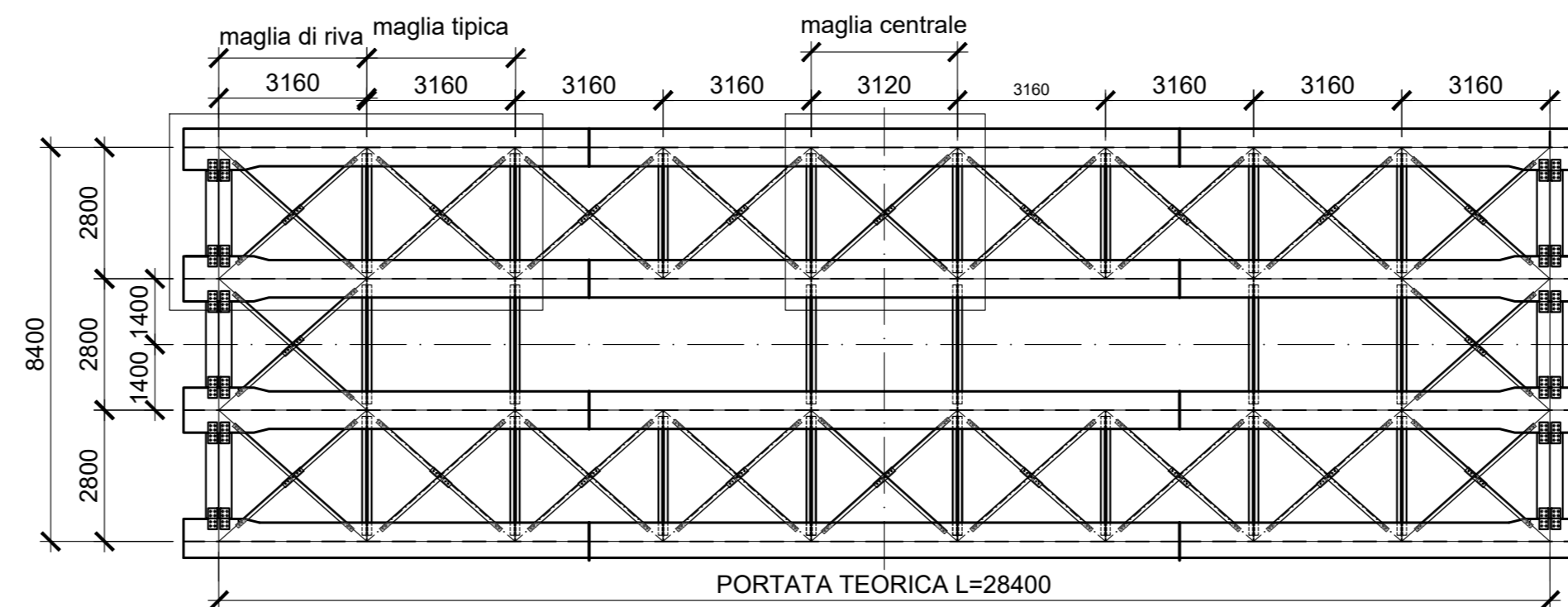
CONTOVENTATURA SUPERIORE

Scala 1:10



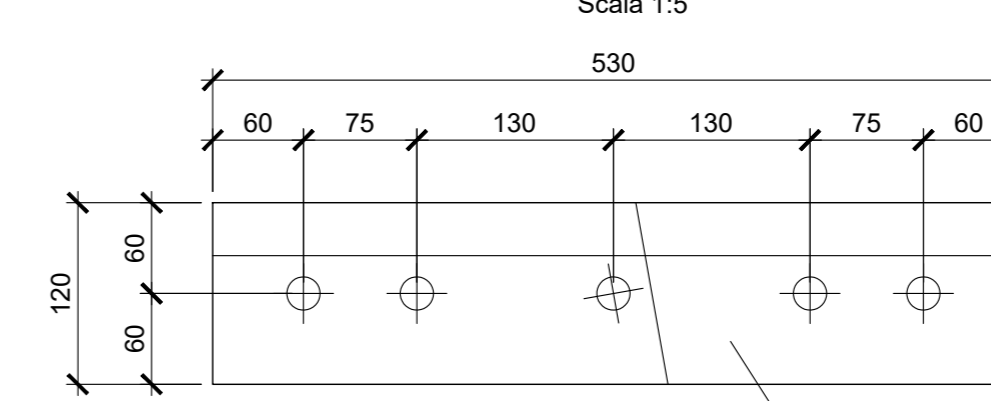
PIANTA CHIAVE

Scala 1:150



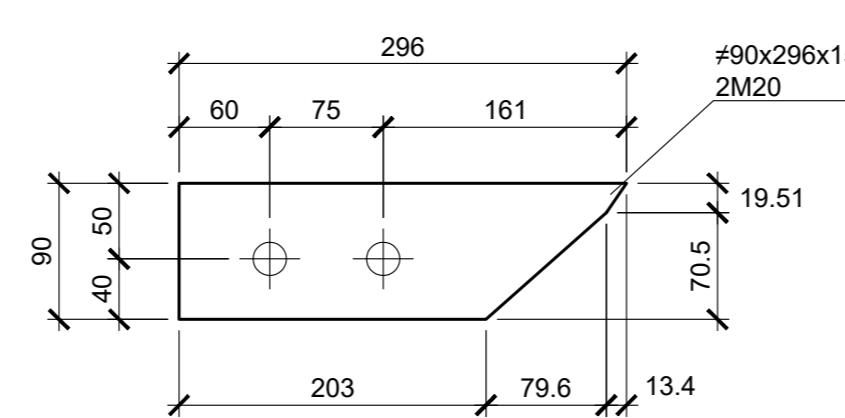
DETTAGLIO PIASTRA 1

Scala 1:5



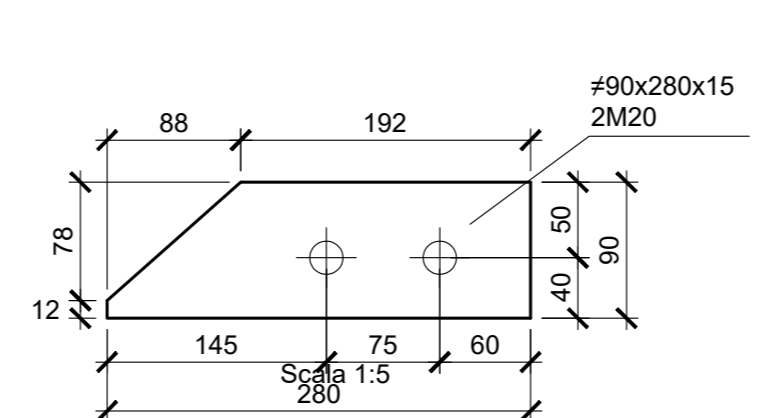
DETTAGLIO IMBOTTITURA 1

Scala 1:5



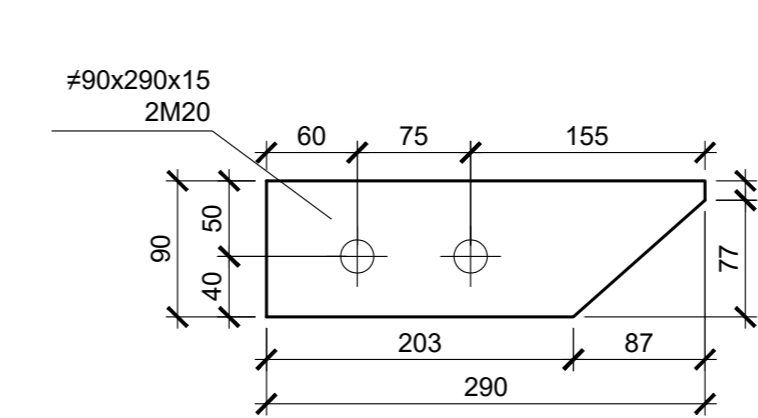
DETTAGLIO IMBOTTITURA 3

Scala 1:5



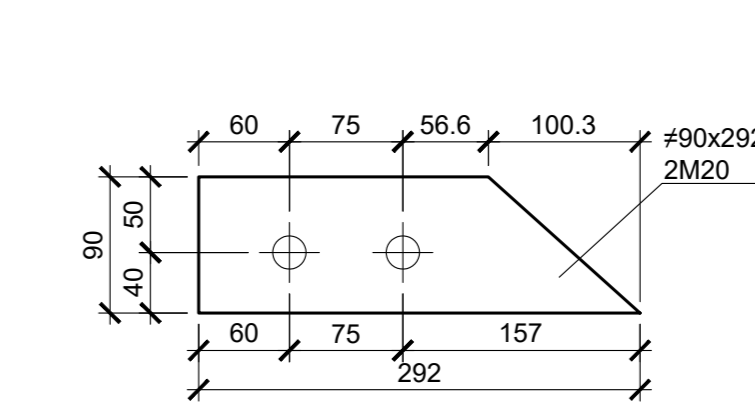
DETTAGLIO IMBOTTITURA 5

Scala 1:5



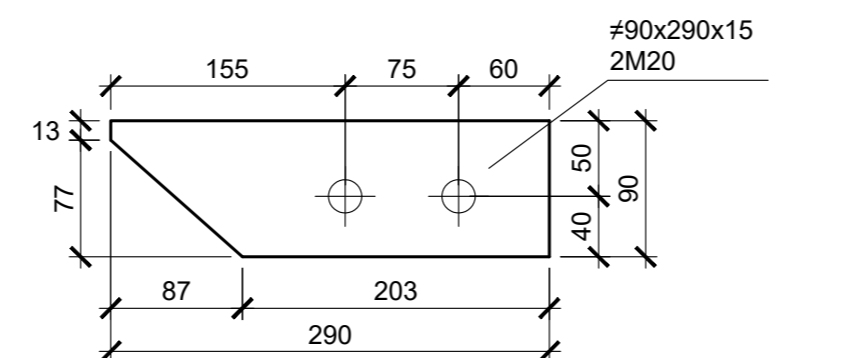
DETTAGLIO IMBOTTITURA 7

Scala 1:5



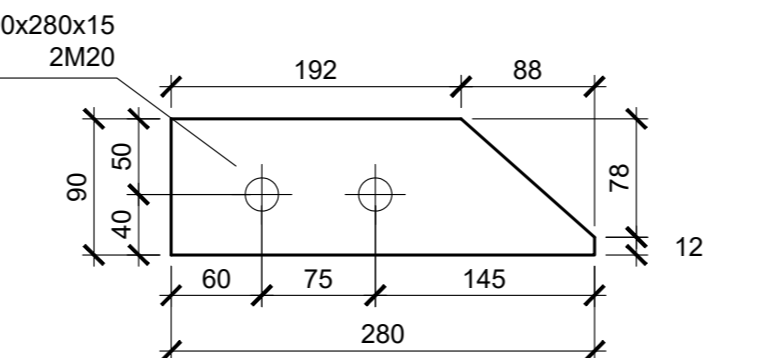
DETTAGLIO IMBOTTITURA 2

Scala 1:5



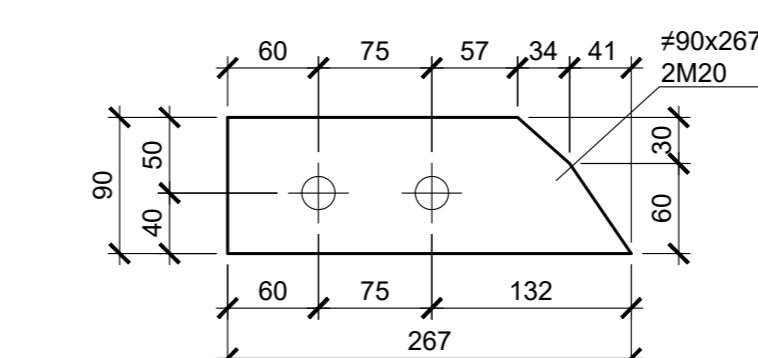
DETTAGLIO IMBOTTITURA 4

Scala 1:5



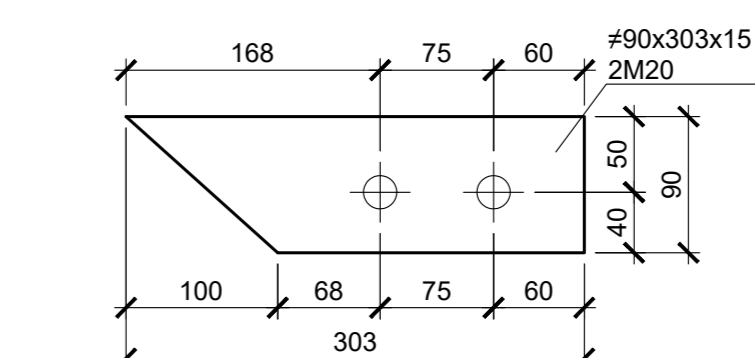
DETTAGLIO IMBOTTITURA 6

Scala 1:5



DETTAGLIO IMBOTTITURA 8

Scala 1:5



NOTA BENE:

PER LA TABELLA MATERIALI SI RIMANDA ALL'ELABORATO SPECIFICO: 'TABELLE MATERIALI E INCIDENZE' - IF2R.2.2.E.ZZ.TT.VI.17.0.0.001

COMMITTENTE:



DIREZIONE LAVORI:



APPALTATORE:



PROGETTAZIONE:



PROGETTO ESECUTIVO

ITINERARIO NAPOLI-BARI RADDOPPIO TRATTA CANCELLO - BENEVENTO II LOTTO FUNZIONALE FRASSO TELESINO - VITULANO 2° SUBLOTTO TELESE - SAN LORENZO

DISEGNO

PONTI E VIADOTTI

V117 - Ponte del Corpo - PONTE dal km 37+283.19 al km 37+313.19

Carpenteria Metallica - Controventi Superiori

Rev.	Descrizione	Redatto	Data	Verificato	Data	Approvato	Data	Aut. / Data
A	EMISIONE	E. BUCI	25/05/21	G. CAROZZA	24/05/21	L. IMBOTTITURA	24/05/21	4 PROGETTISTA
B	REVISIONE A REGISTRO ISTRUTORIA	E. BUCI	01/10/21	G. CAROZZA	27/09/21	L. IMBOTTITURA	27/09/21	4 PROGETTISTA

SCALA: VARIE

COMMESSA: I F 2 R | LOTTO: 2 | FASE: E | ENTE: Z | TIPO DOC: B | OPERA/DISCIPLINA: V | V | 1 | 7 | 0 | 9 | 0 | 0 | 5 | B | PROG. REV. DATA

File: IF2R.2.2.E.ZZ.BZ.VI.17.0.9.005.B.dwg n. Elab.: