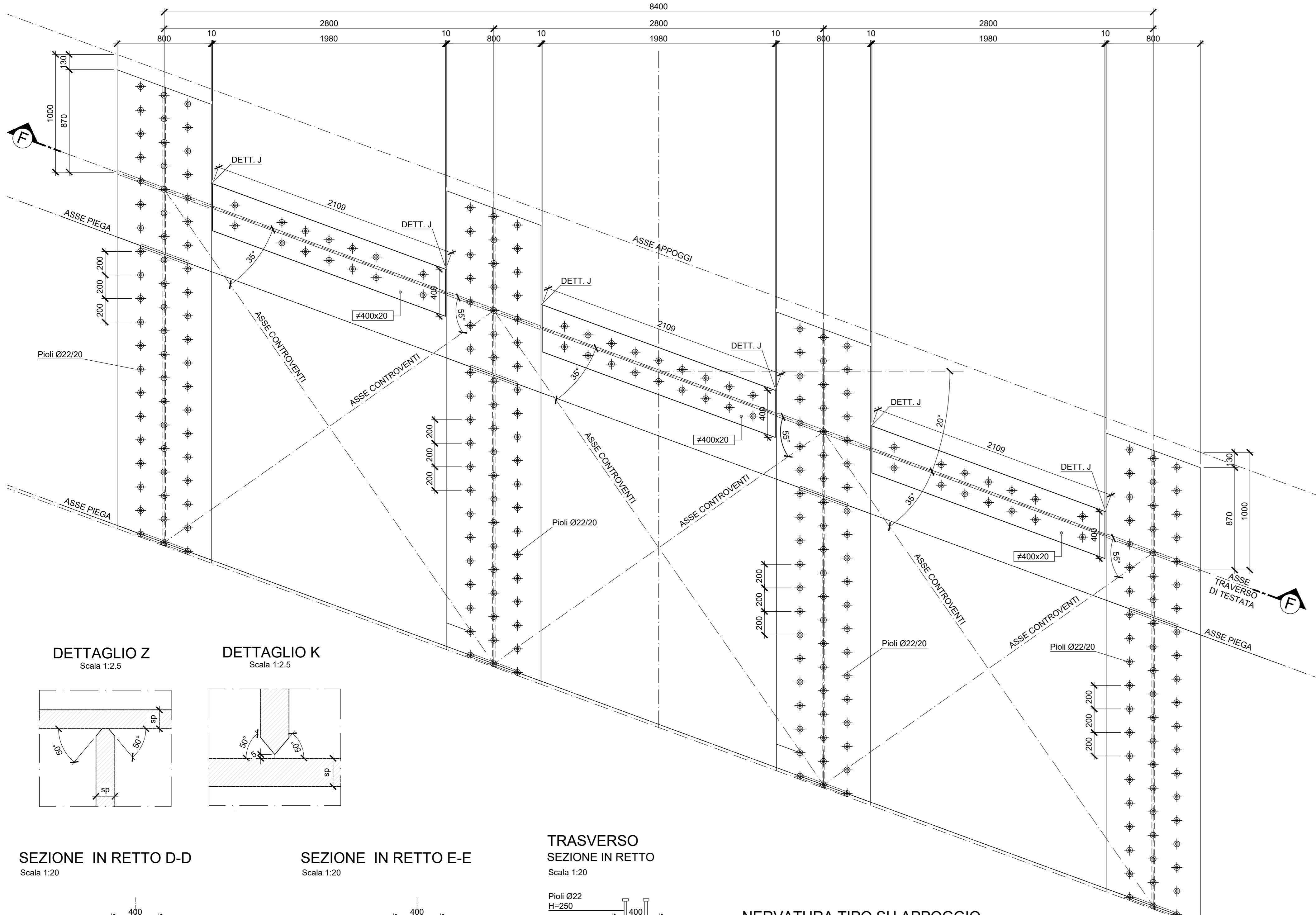


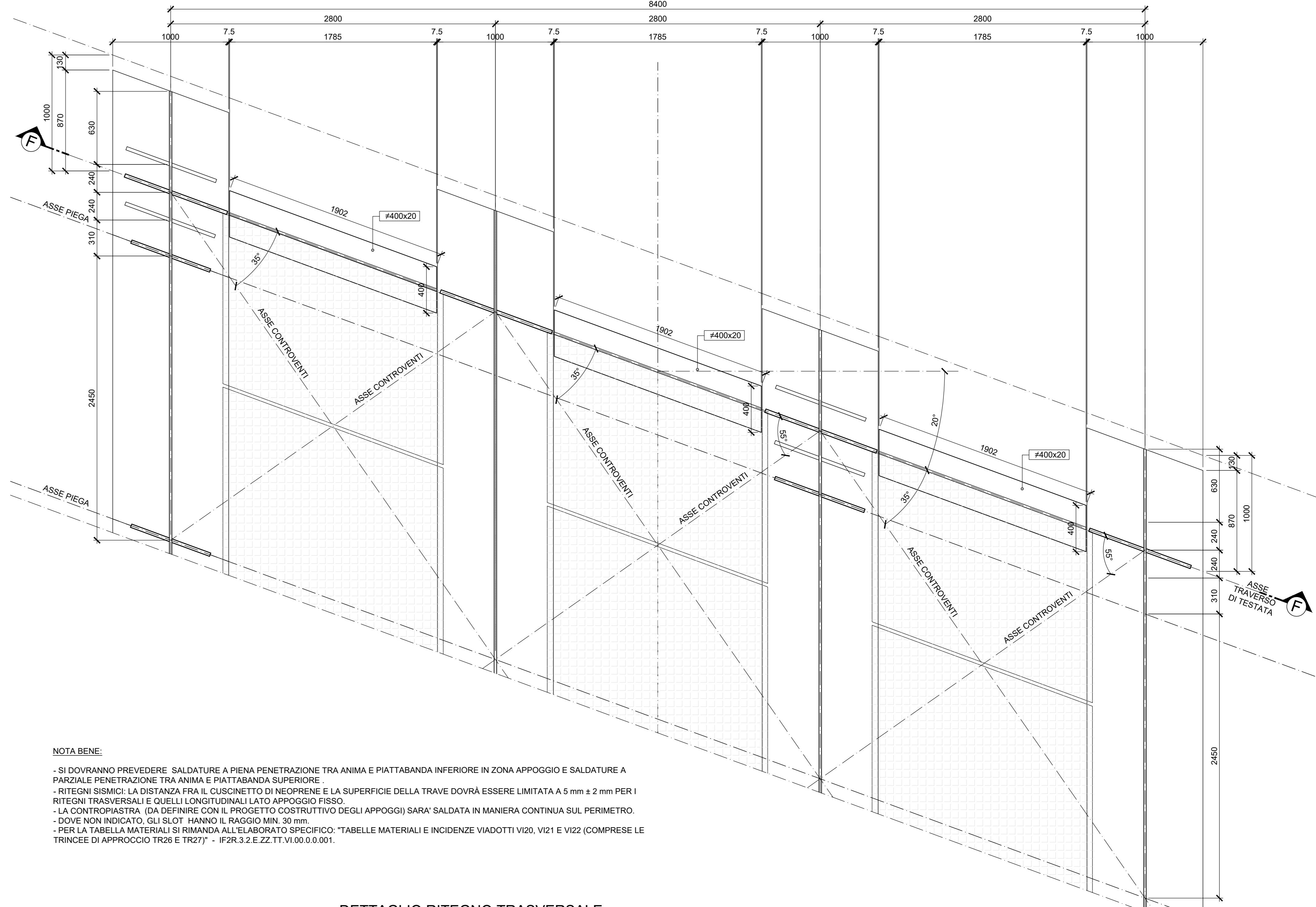
SEZIONE SUPERIORE A-A

Scala 1:20



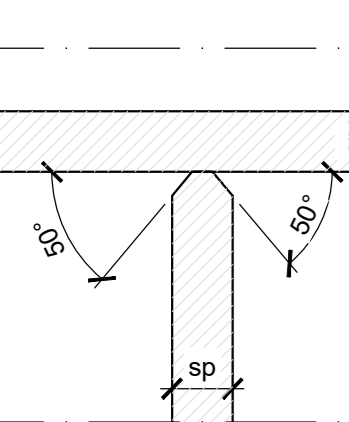
SEZIONE INFERIORE B-B

Scala 1:20



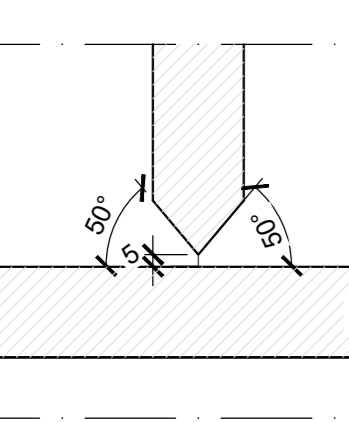
DETTAGLIO Z

Scala 1:2.5



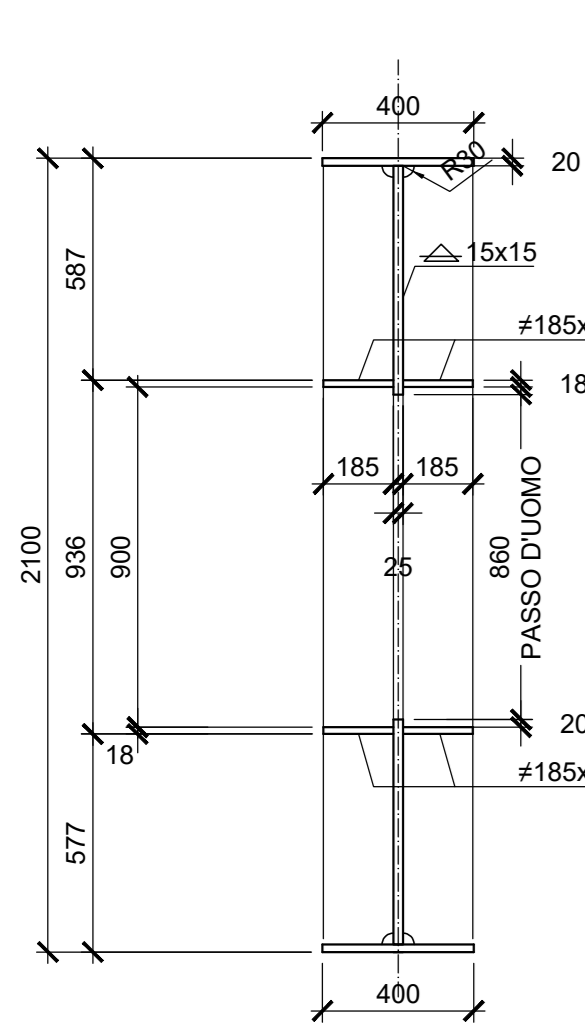
DETTAGLIO K

Scala 1:2.5



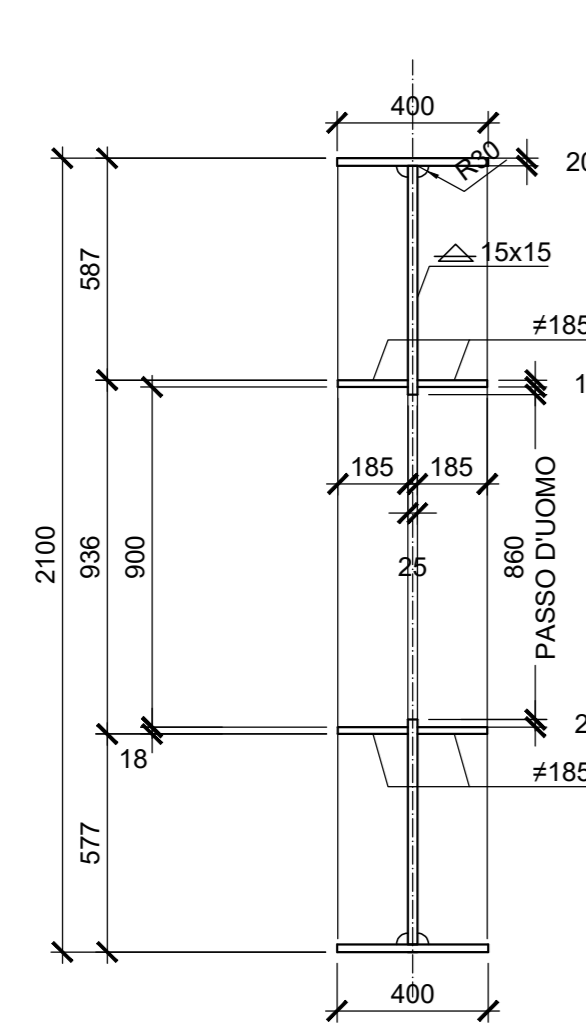
SEZIONE IN RETTO D-D

Scala 1:20



SEZIONE IN RETTO E-E

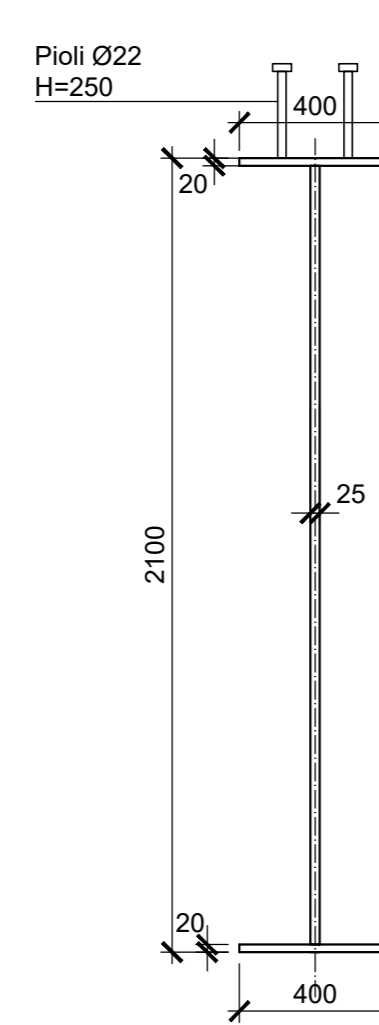
Scala 1:20



TRASVERSO

SEZIONE IN RETTO

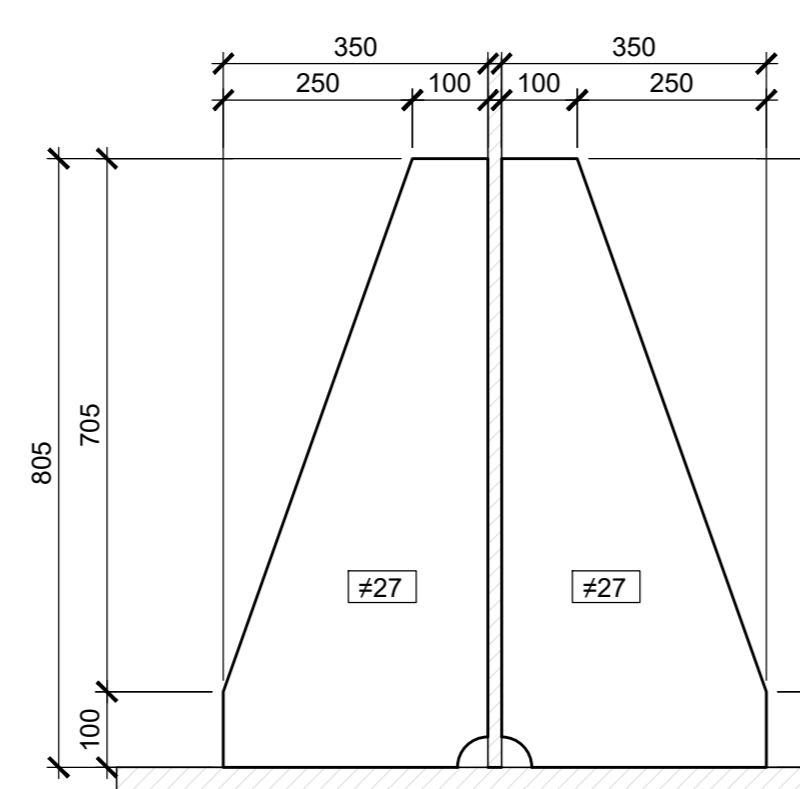
Scala 1:20



NERVATURA TIPO SU APPOGGIO

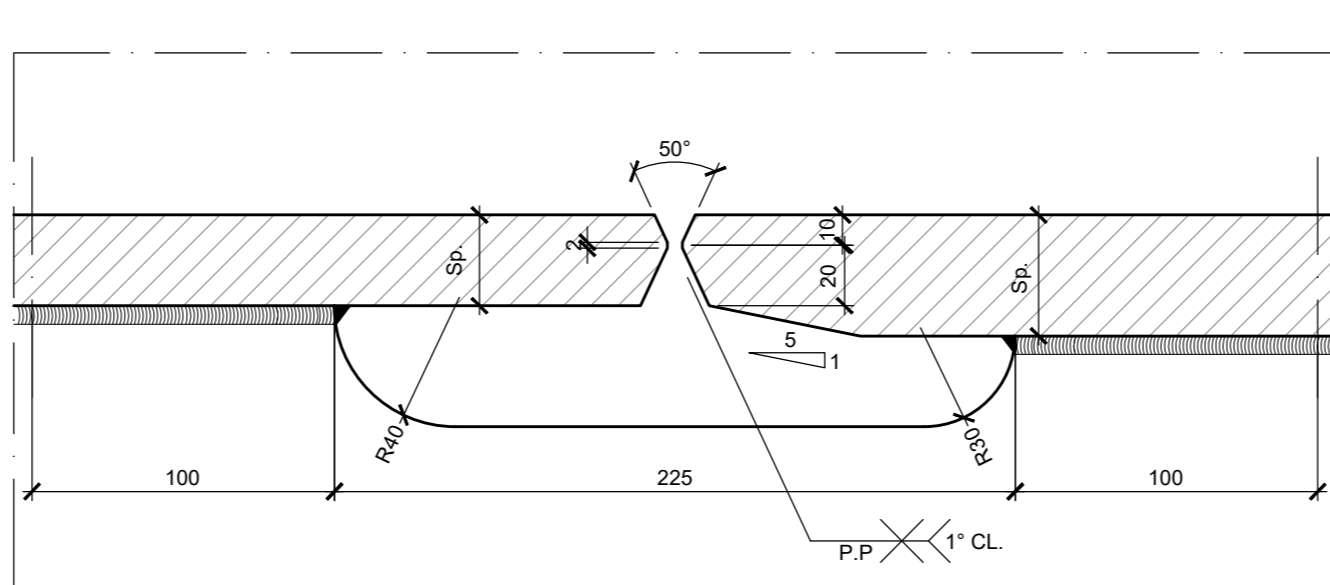
SEZIONE IN RETTO

Scala 1:10



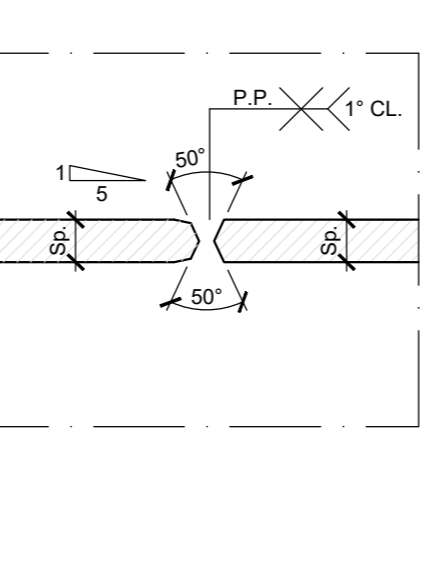
DETTAGLIO J

Scala 1:2.5



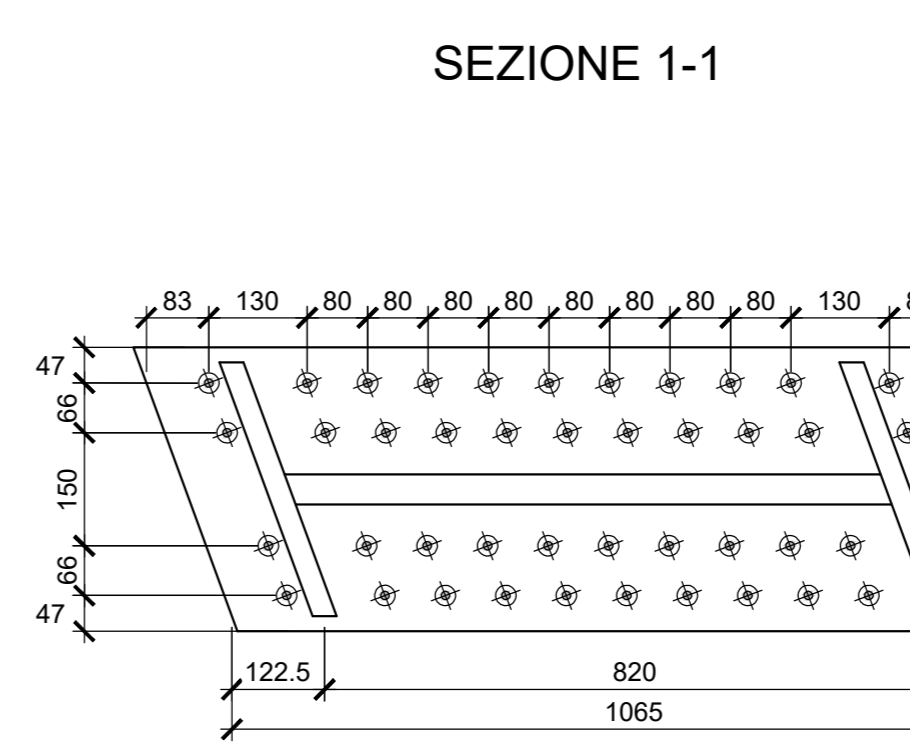
DETTAGLIO L

Scala 1:2.5



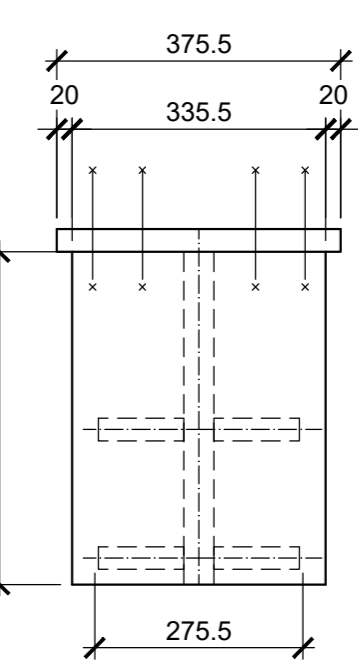
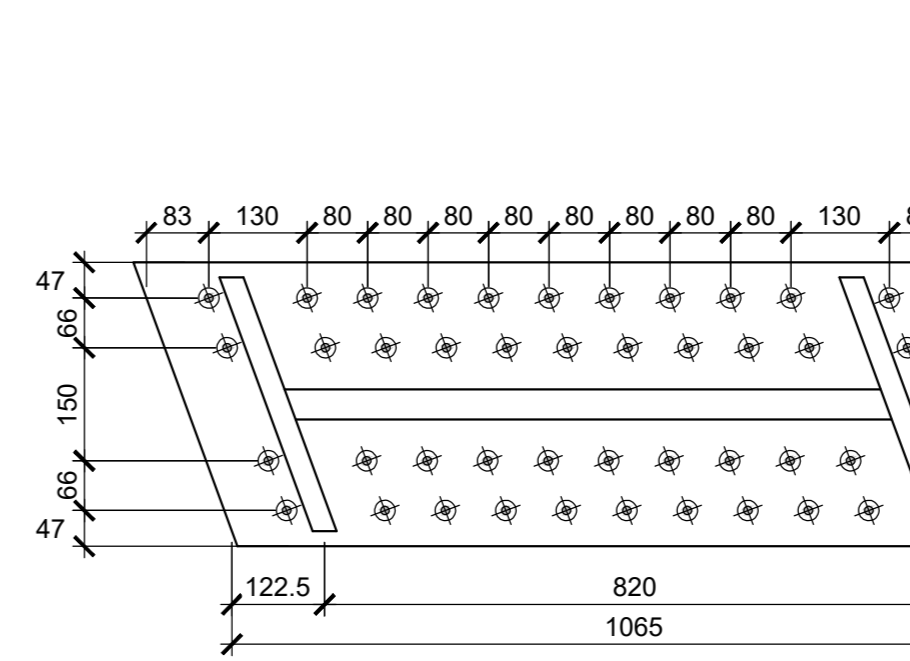
DETTAGLIO RITEGNO TRASVERSALE

Scala 1:10

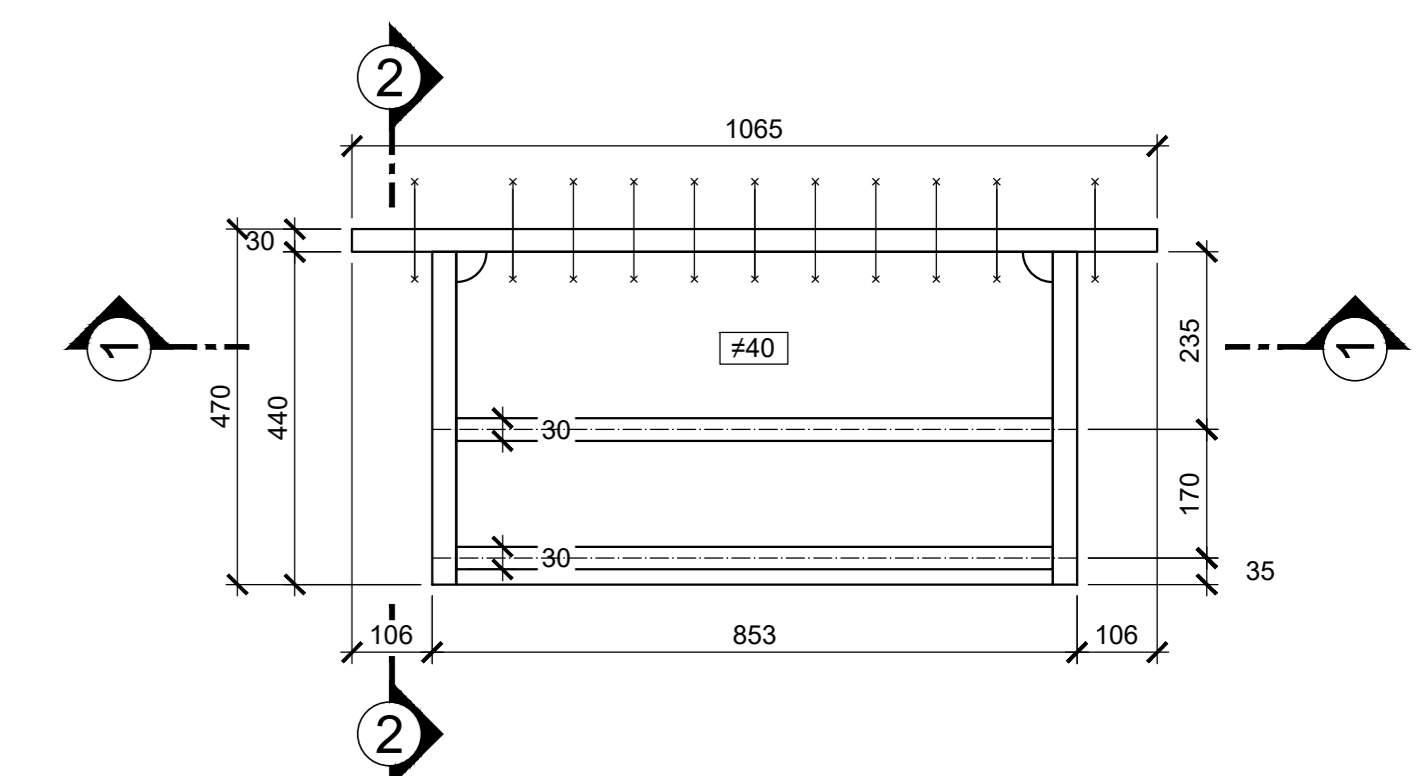


SEZIONE 1-1

SEZIONE 2-2

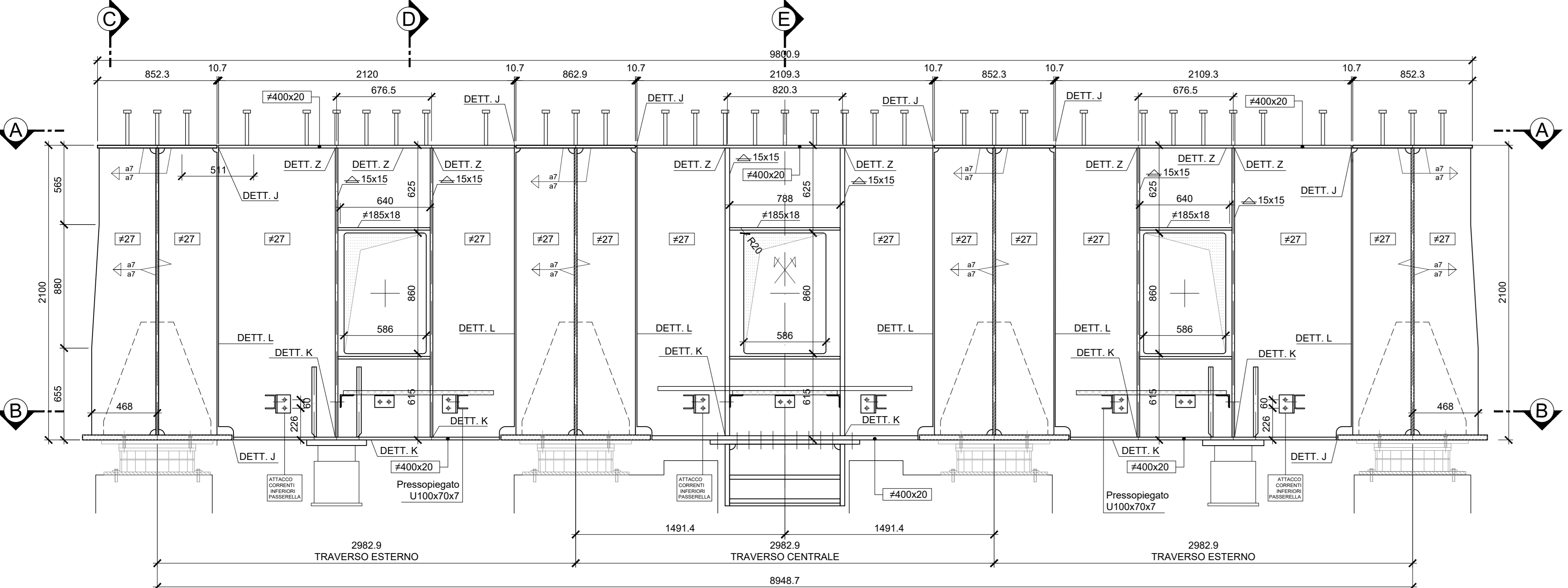


VISTA TRASVERSALE



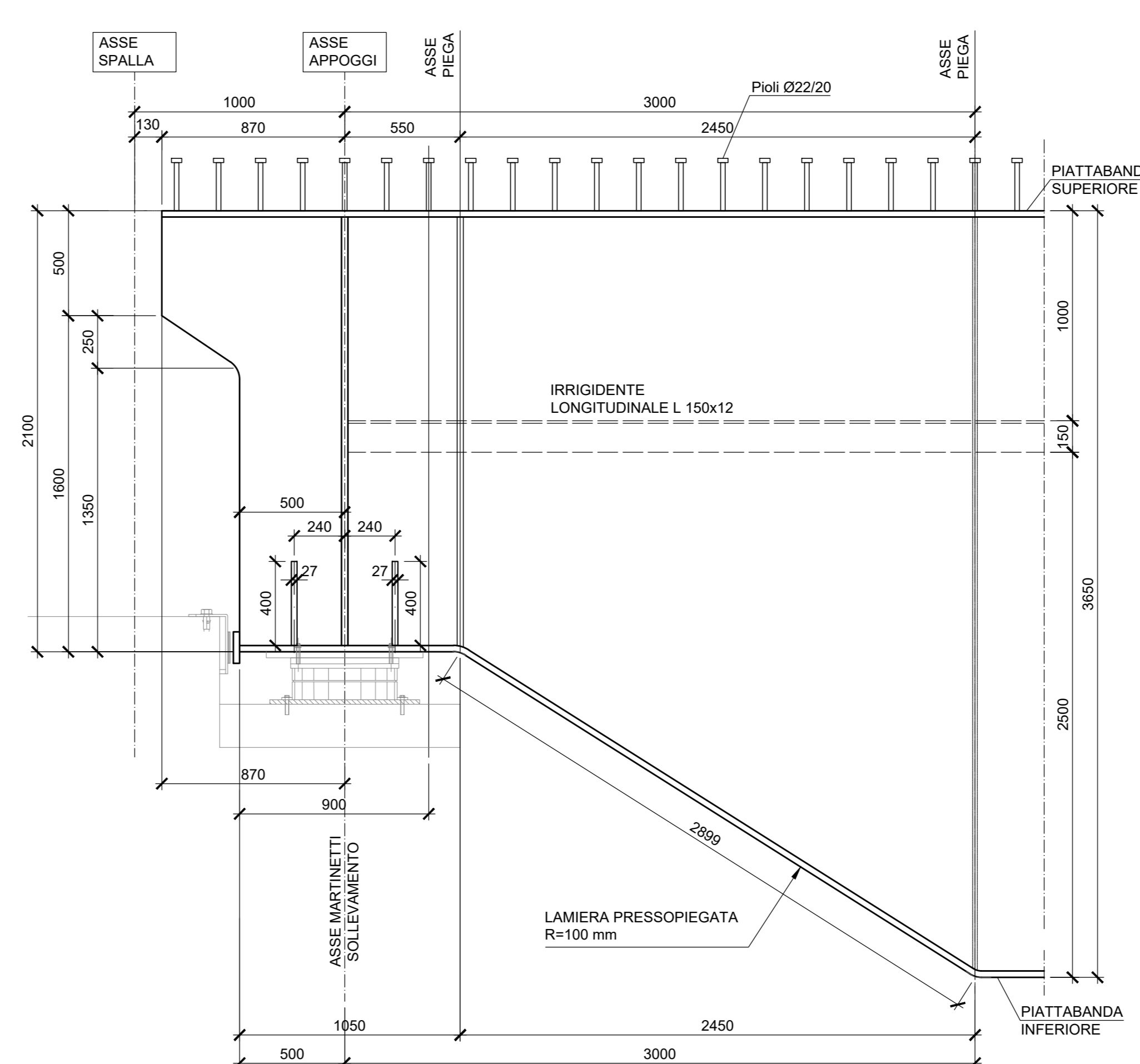
SEZIONE TRASVERSALE F-F - DIAFRAMMA D1

Scala 1:20



VISTA LONGITUDINALE C-C

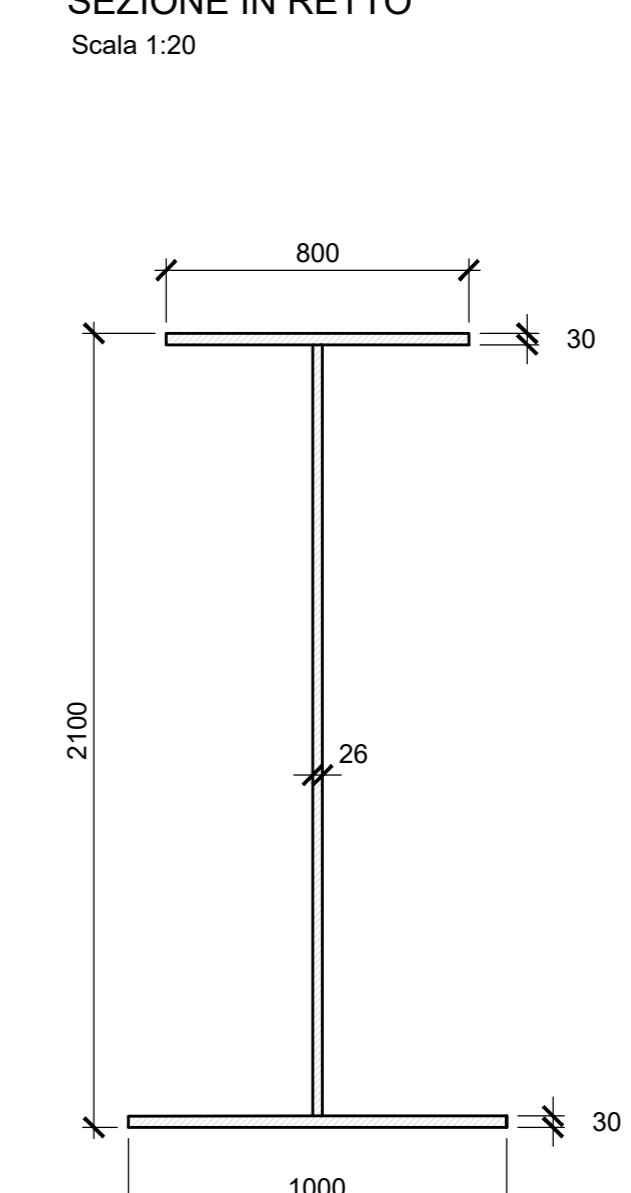
Scala 1:20



TRAVE BASSA CONCIO ESTERNO

SEZIONE IN RETTO

Scala 1:20



COMMITTENTE: **RFI** RETE FERROVIARIA ITALIANA GRUPPO FERROVIE DELLO STATO ITALIANE

DIREZIONE LAVORI: **ITALFERR** GRUPPO FERROVIE DELLO STATO ITALIANE

APPALTATORE: **TELESE S.p.A.** Consorzio Telese S.p.A. e s.p.a. s.p.a.

PROGETTISTI: **Ghella**, **ITINERA**, **SALCEF**, **COGET IMPIANTI**

MANDATARI: **SYSTRA**, **SWS**, **SOTECNI**

IL DIRETTORE DELLA PROGETTAZIONE: **Ing. M. Esposito**

**PROGETTO ESECUTIVO**

**ITINERARIO NAPOLI-BARI RADDOPPIO TRATTA CANCELLO - BENEVENTO II LOTTO FUNZIONALE FRASSO TELESINO - VITULANO 3° SUBLOTTO SAN LORENZO - VITULANO**

DISEGNO: **PONTI E VIADOTTI**

V122 - PONTE al km 43+436.81: Ponte Reventa (comprese le TRINCEE di approccio TR26 e TR27)

Carpenteria metallica Impalcato - Diaframmi di Appoggio

APPALTATORE: **Ing. M. Esposito**

SCALA: **VARIE**

Rev.	Descrizione	Redatto	Verificato	Data	Approvato	Data	Autore/Elaborato
A	EMISSIONE	E. RICCI	G. CAROPPA	24/05/21	L. BRILLOZZI	24/05/21	IL PROGETTISTA
B	REVISIONE A SEGUITO REV.	E. RICCI	G. CAROPPA	30/05/21	L. BRILLOZZI	30/05/21	IL PROGETTISTA

File: IF2R.3.2.E.ZZ.BZ.VI.22.0.9.001.B.dwg n. Elab.: