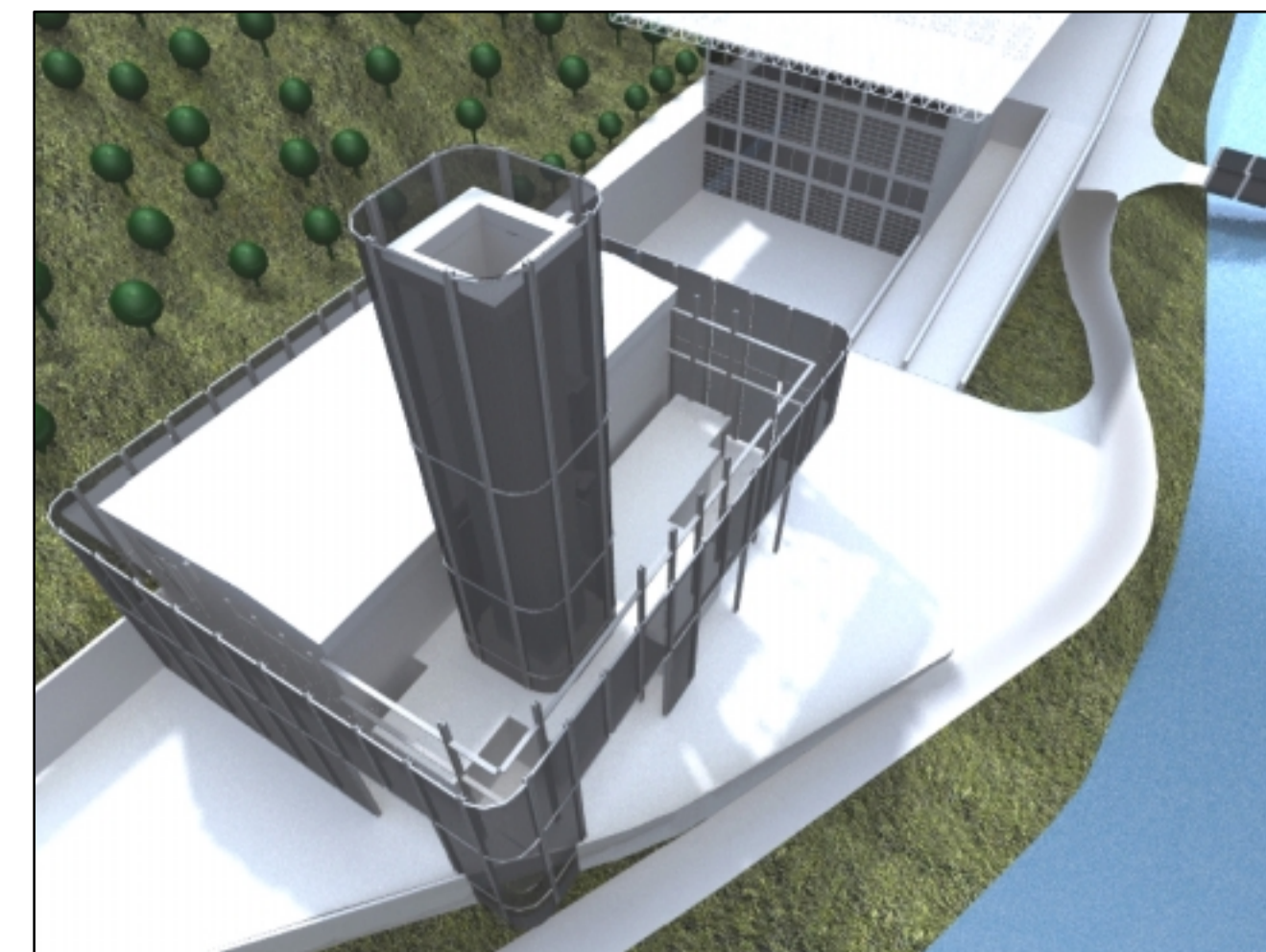
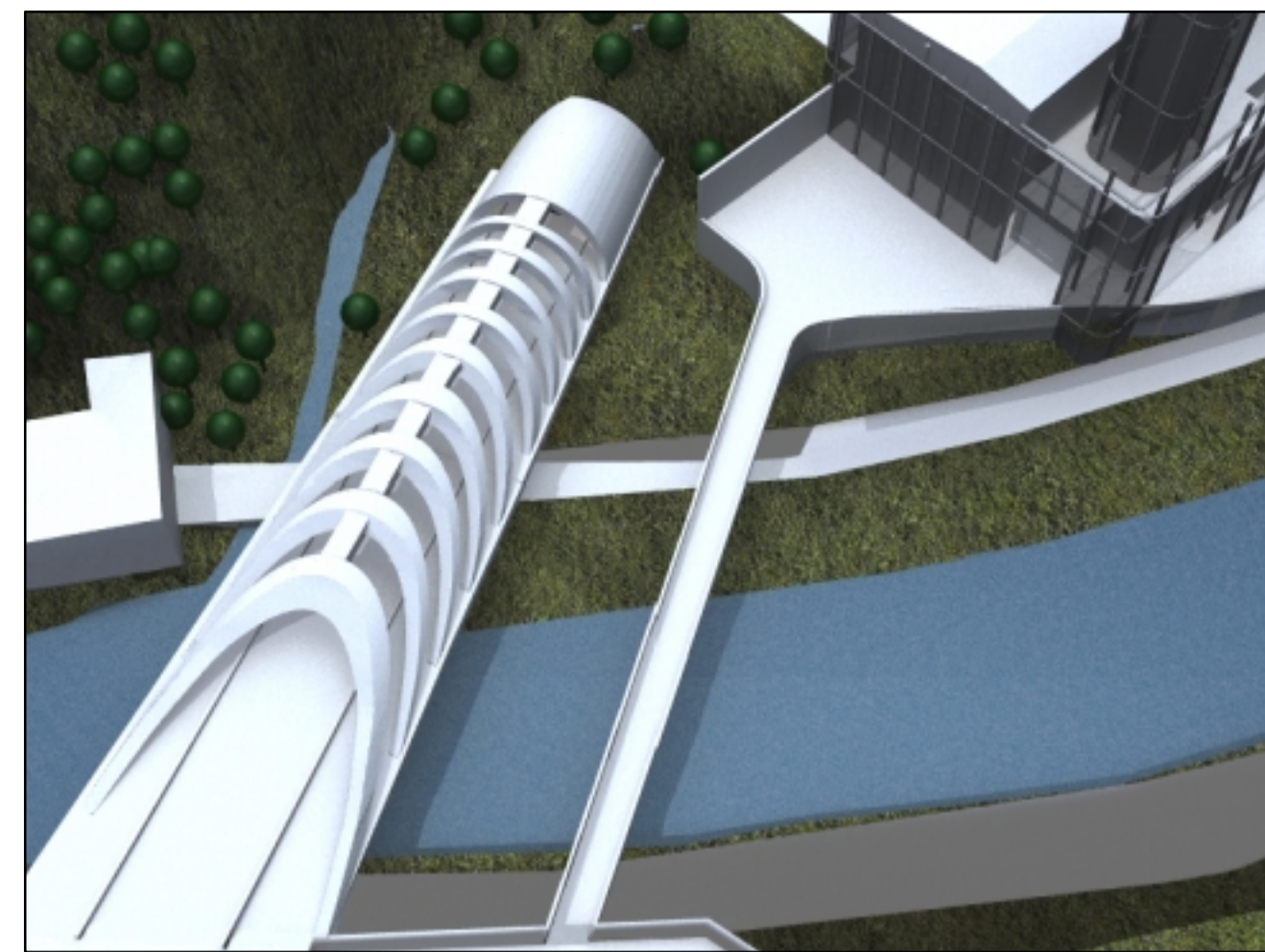
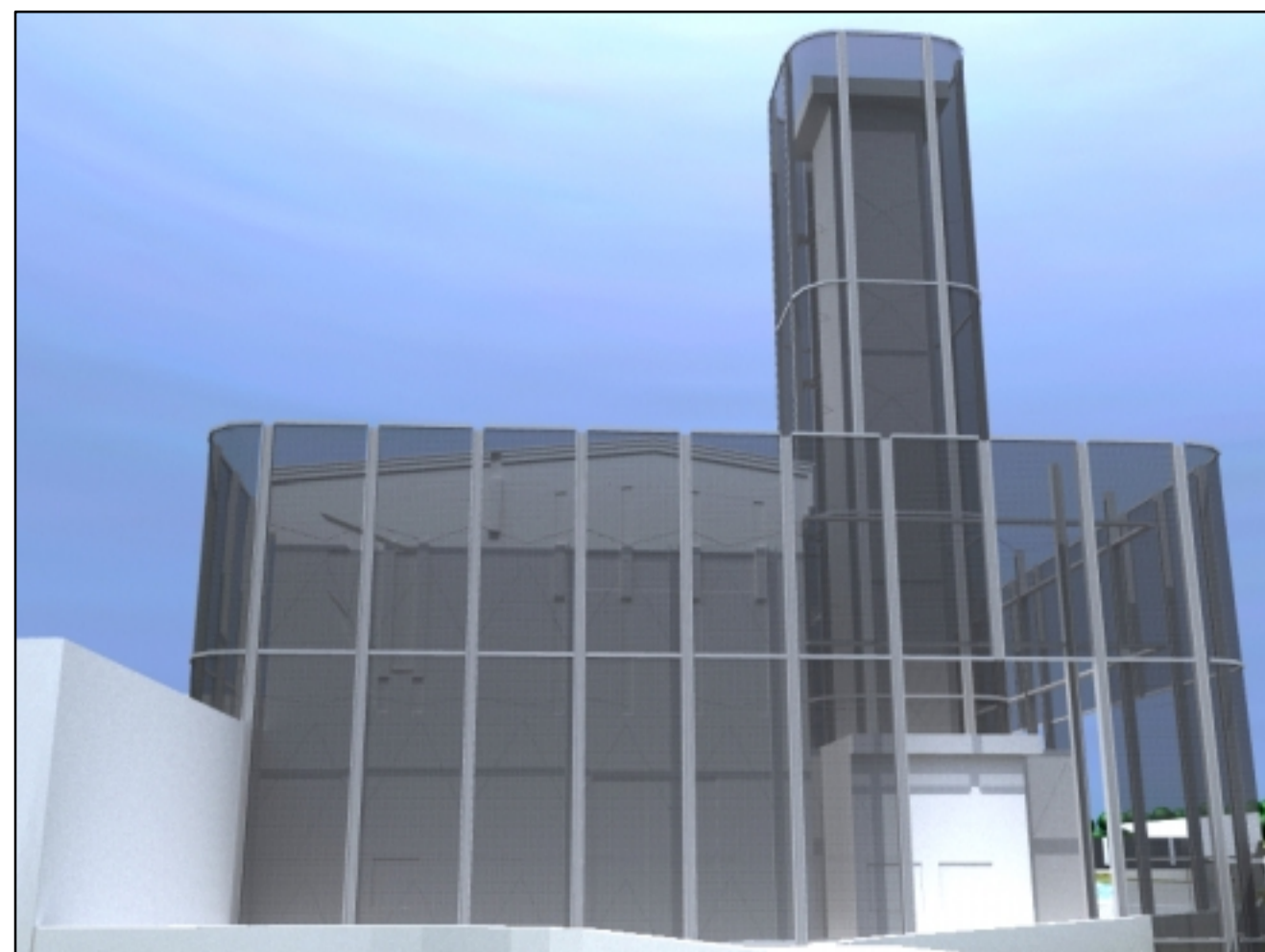
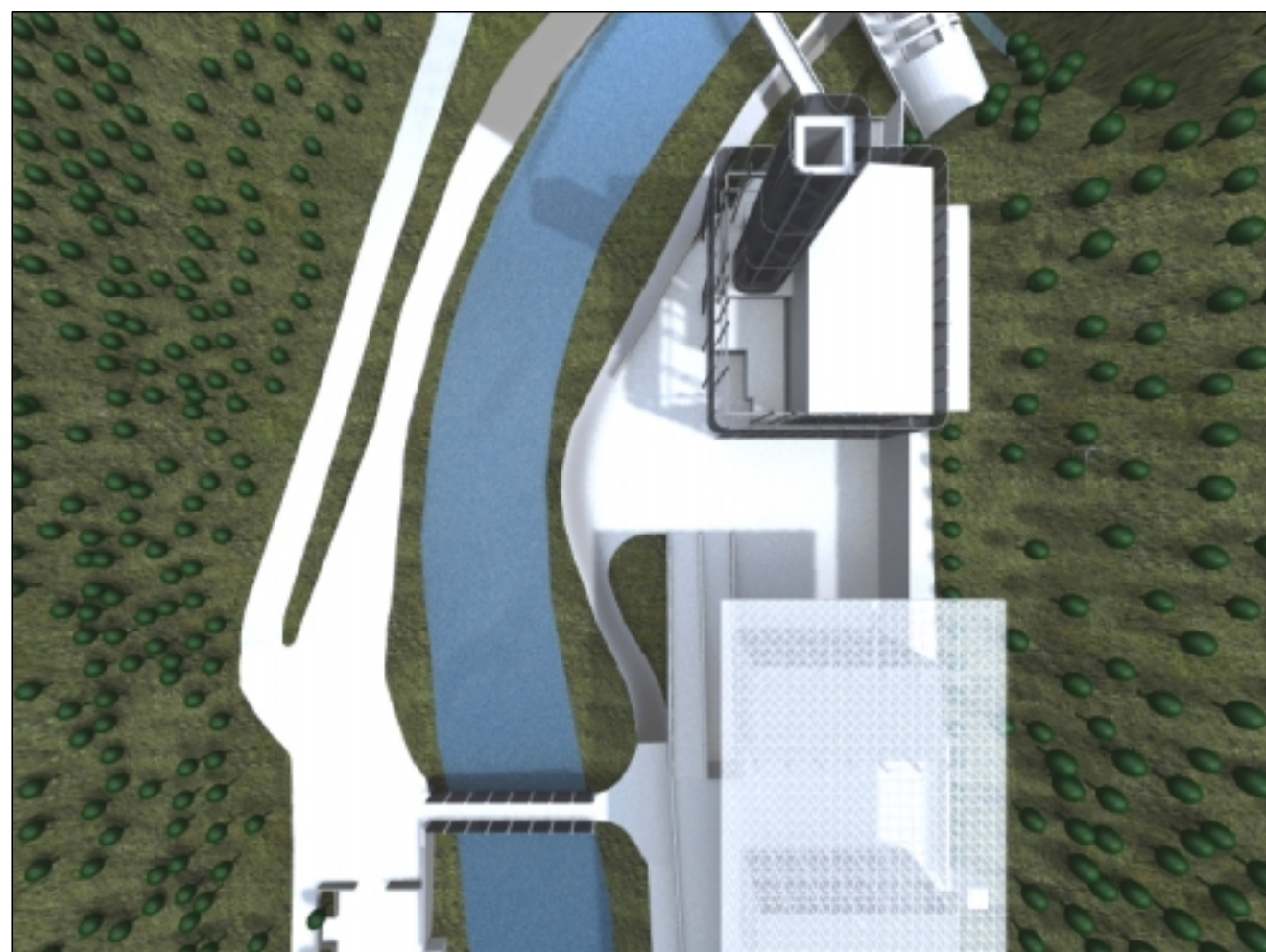
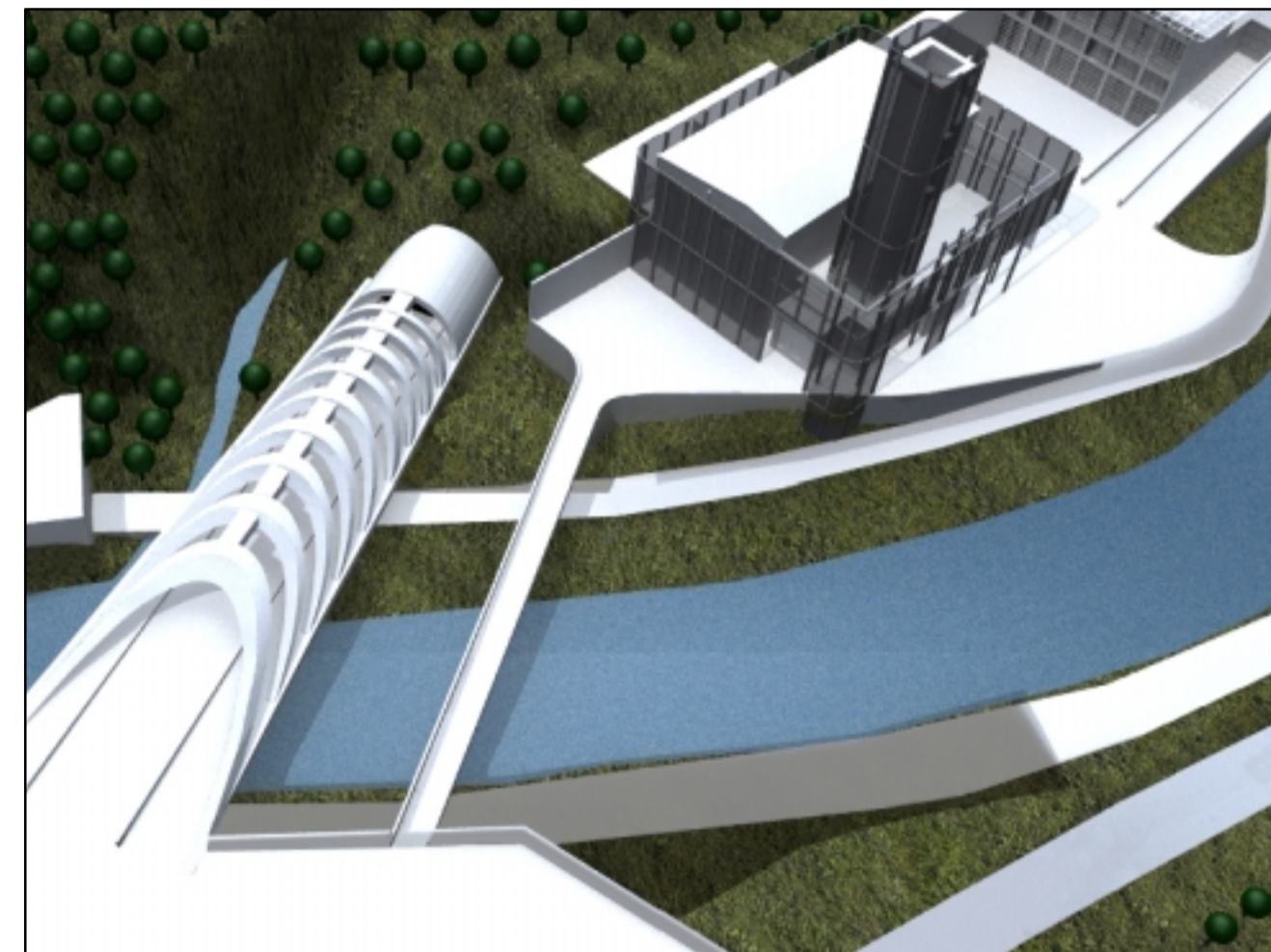
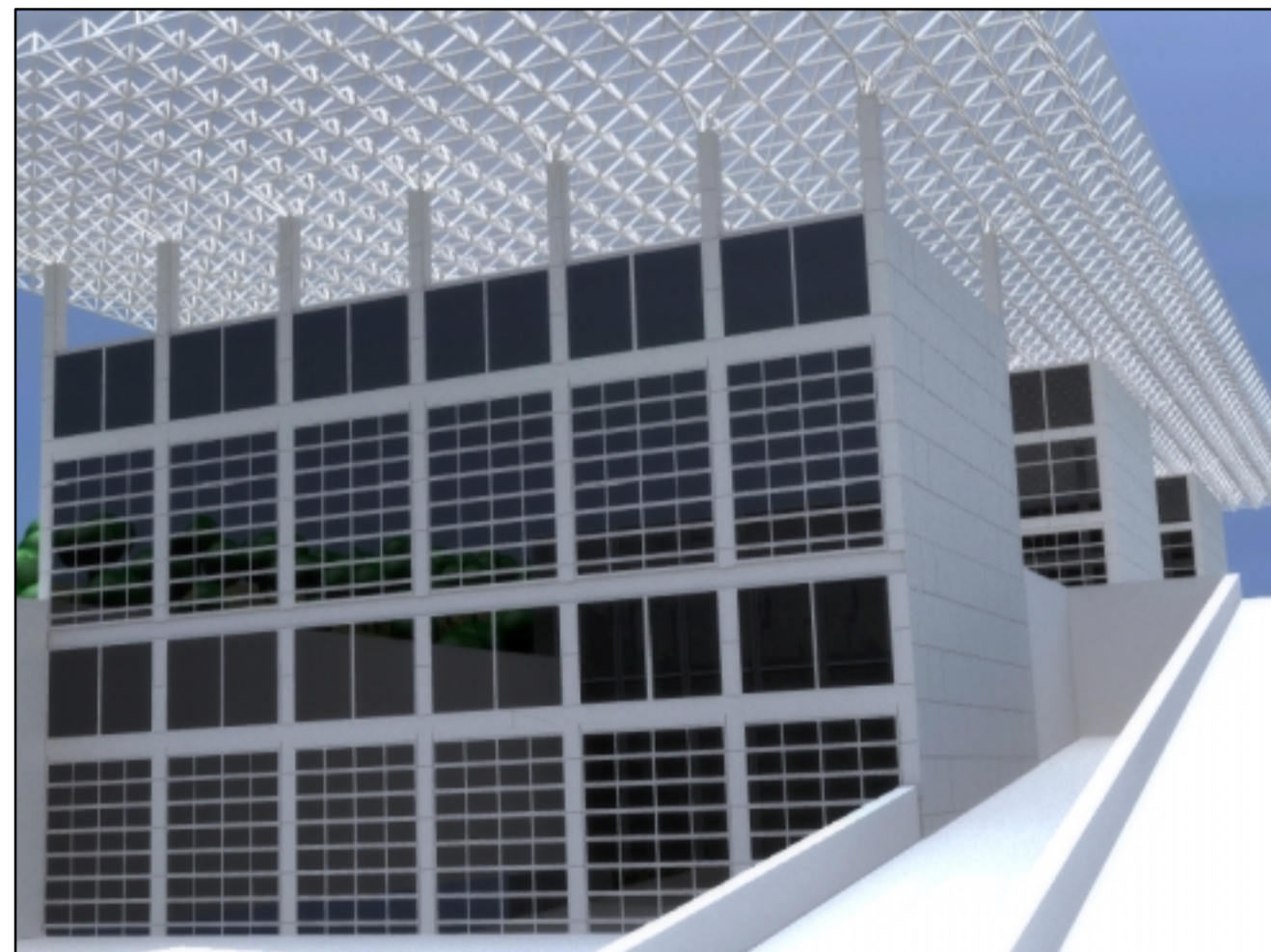
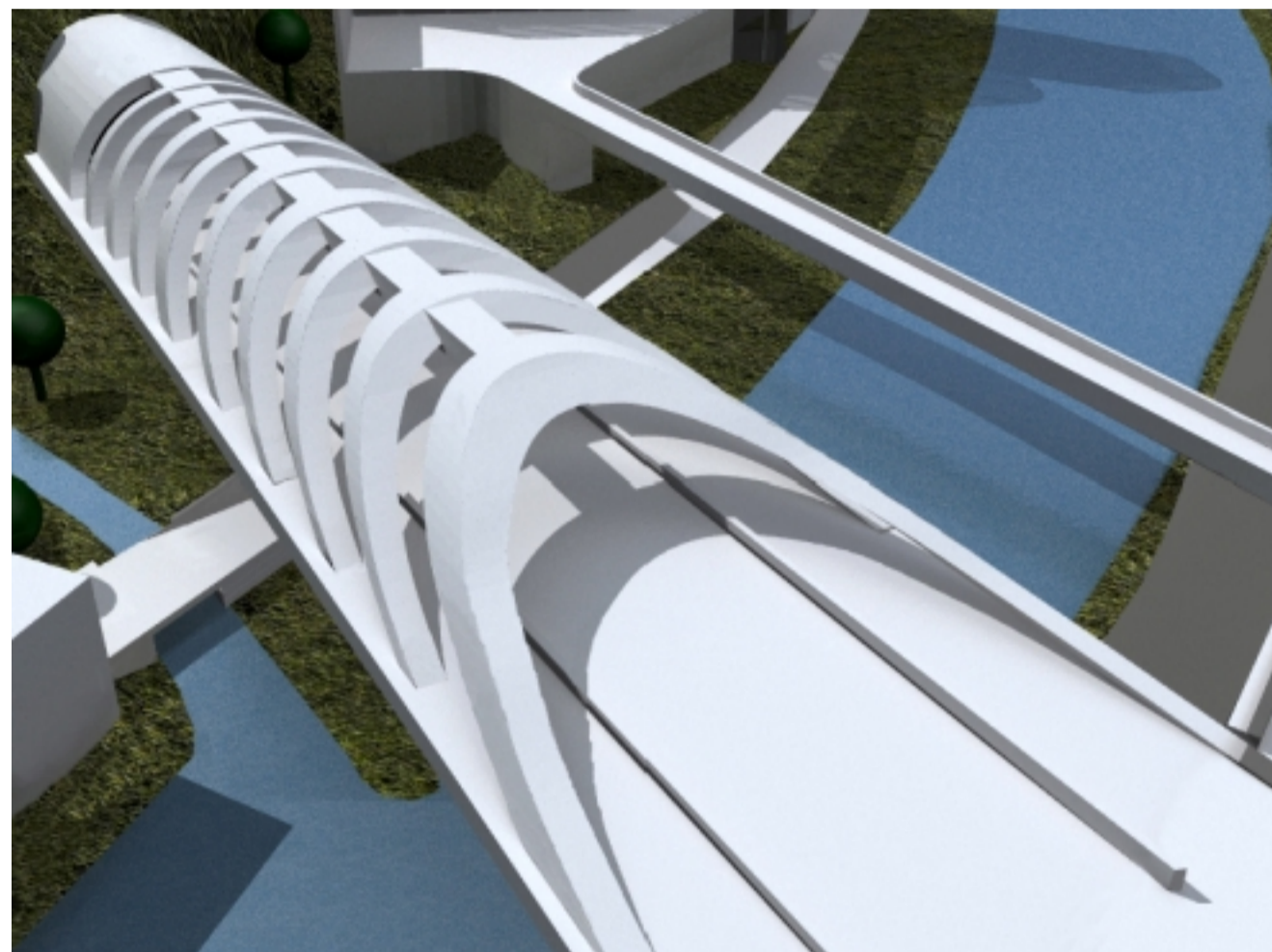


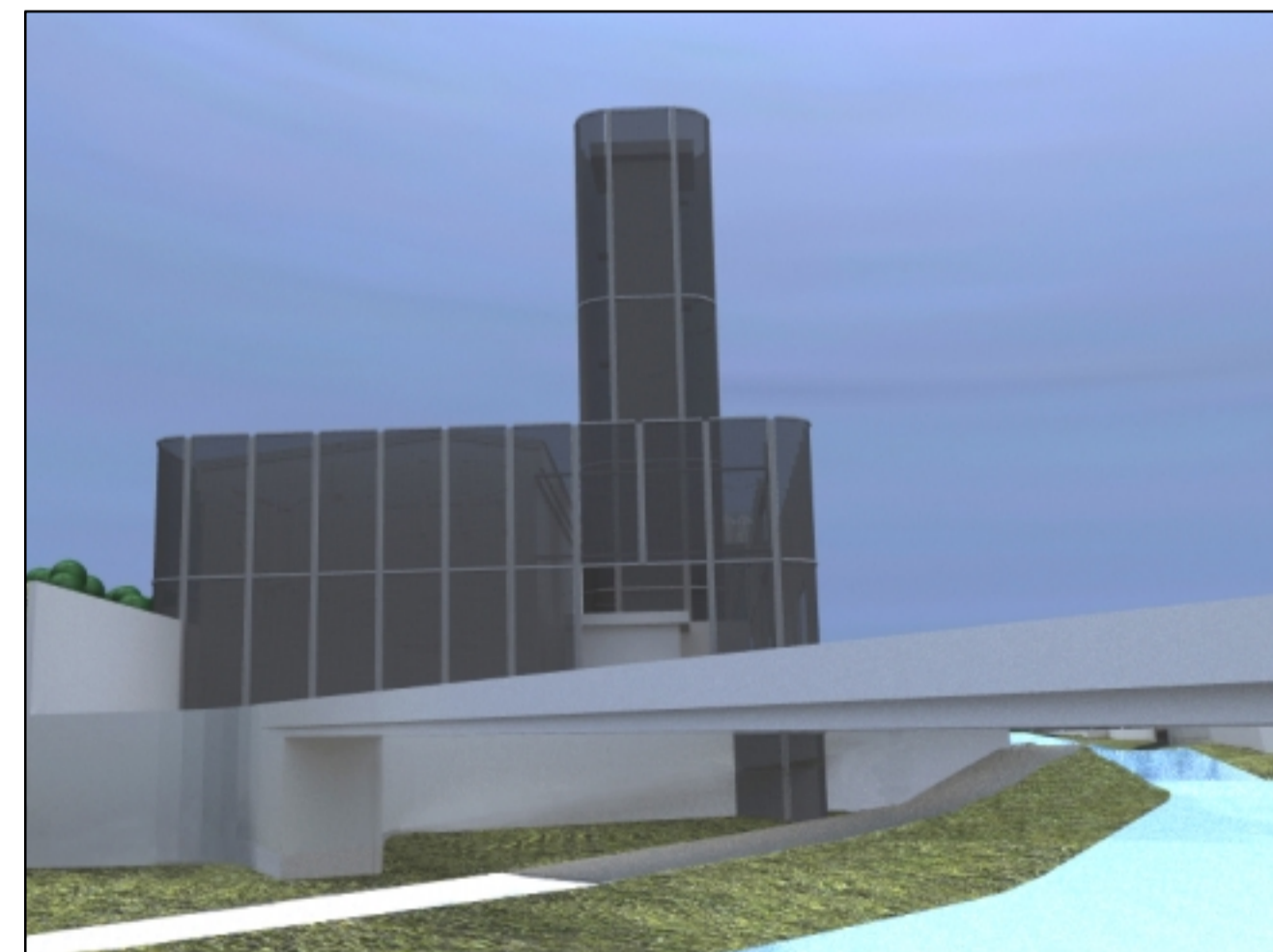
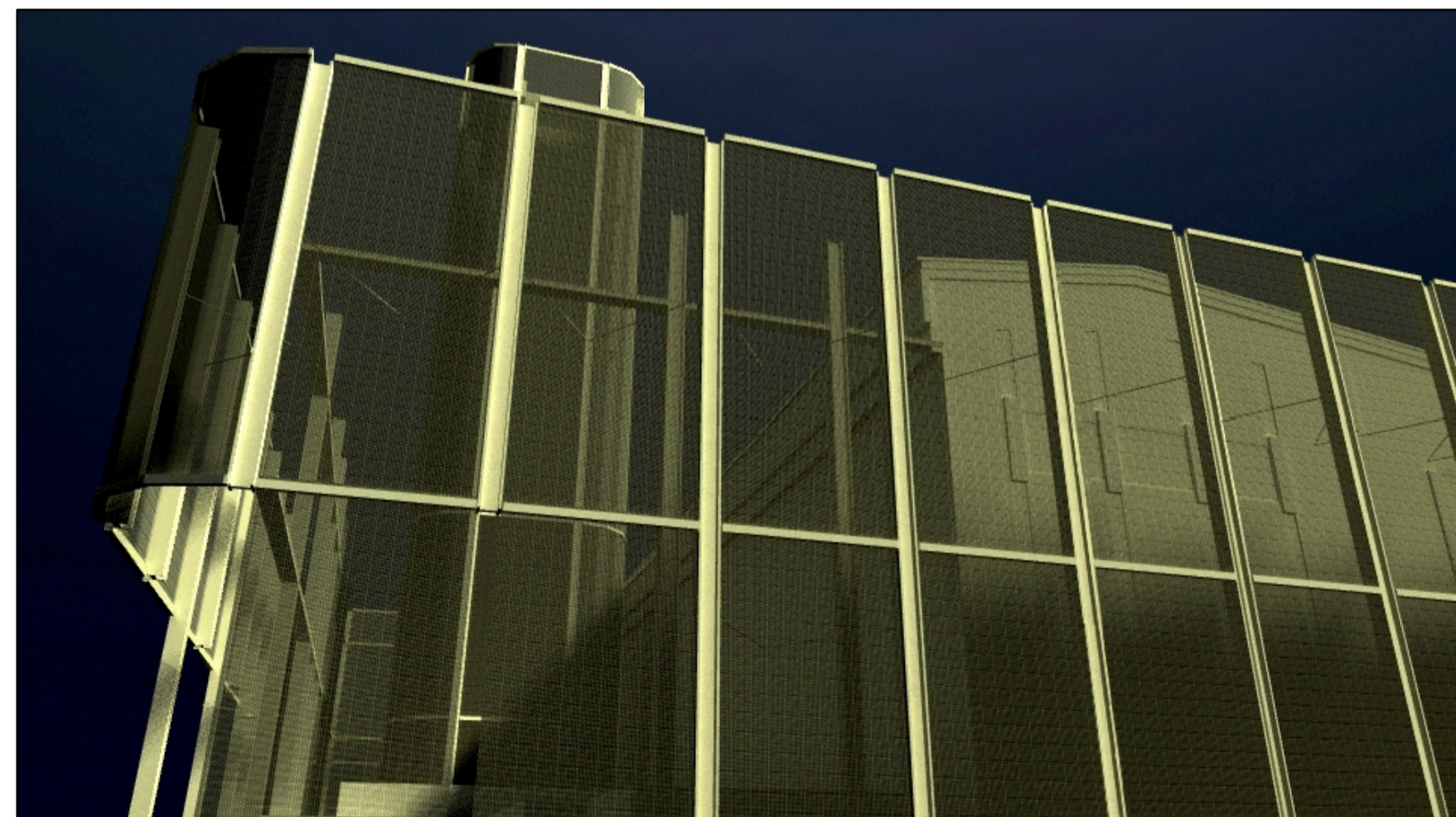
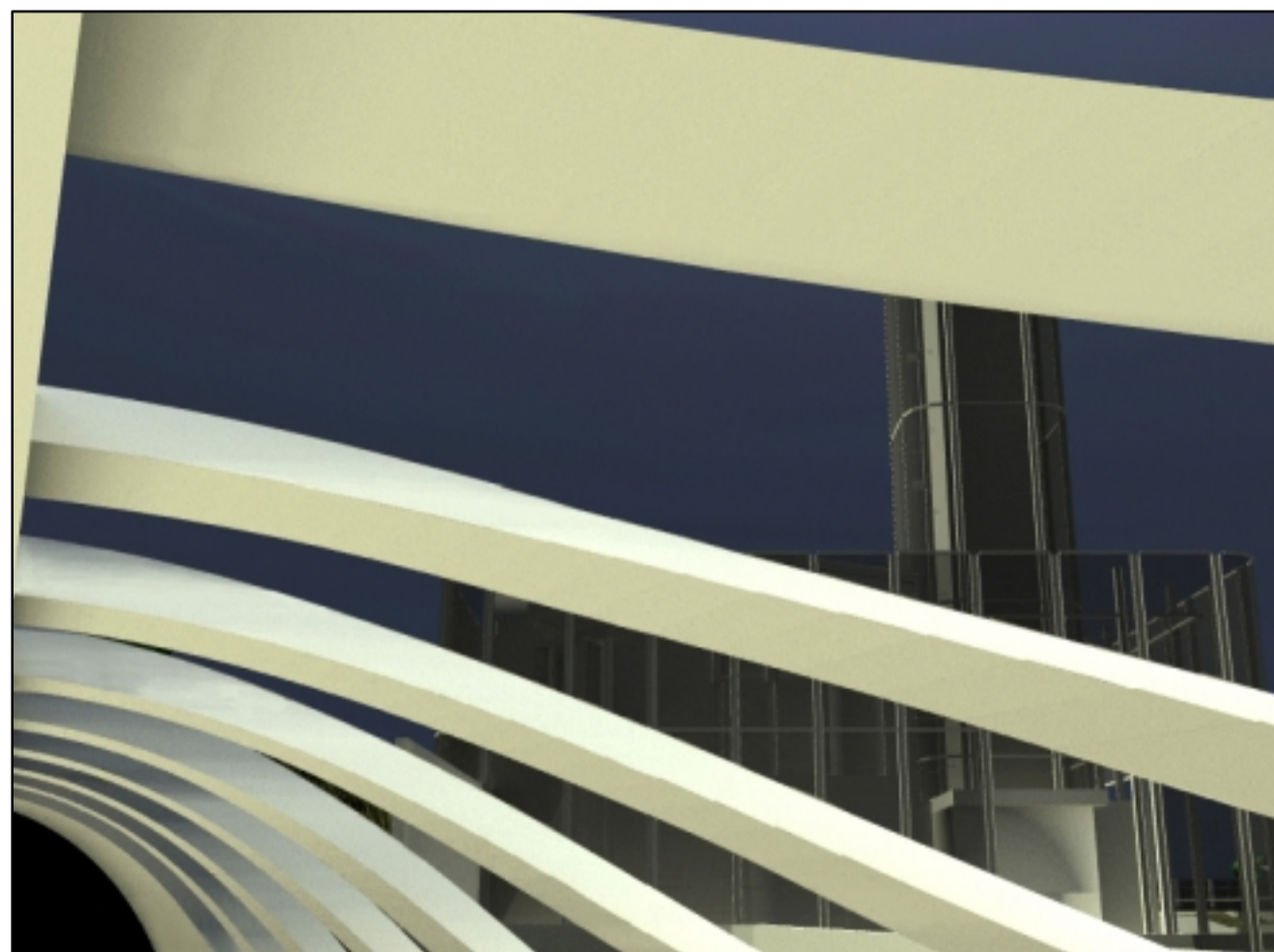
domani



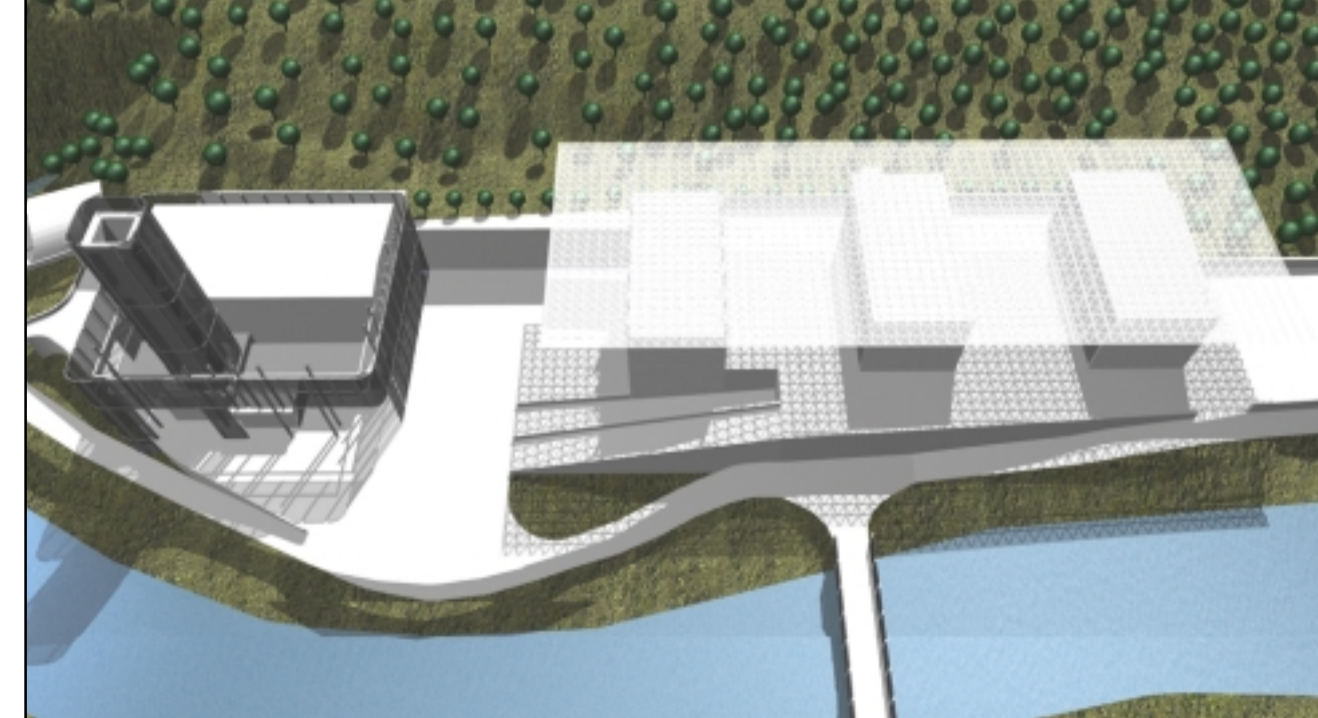
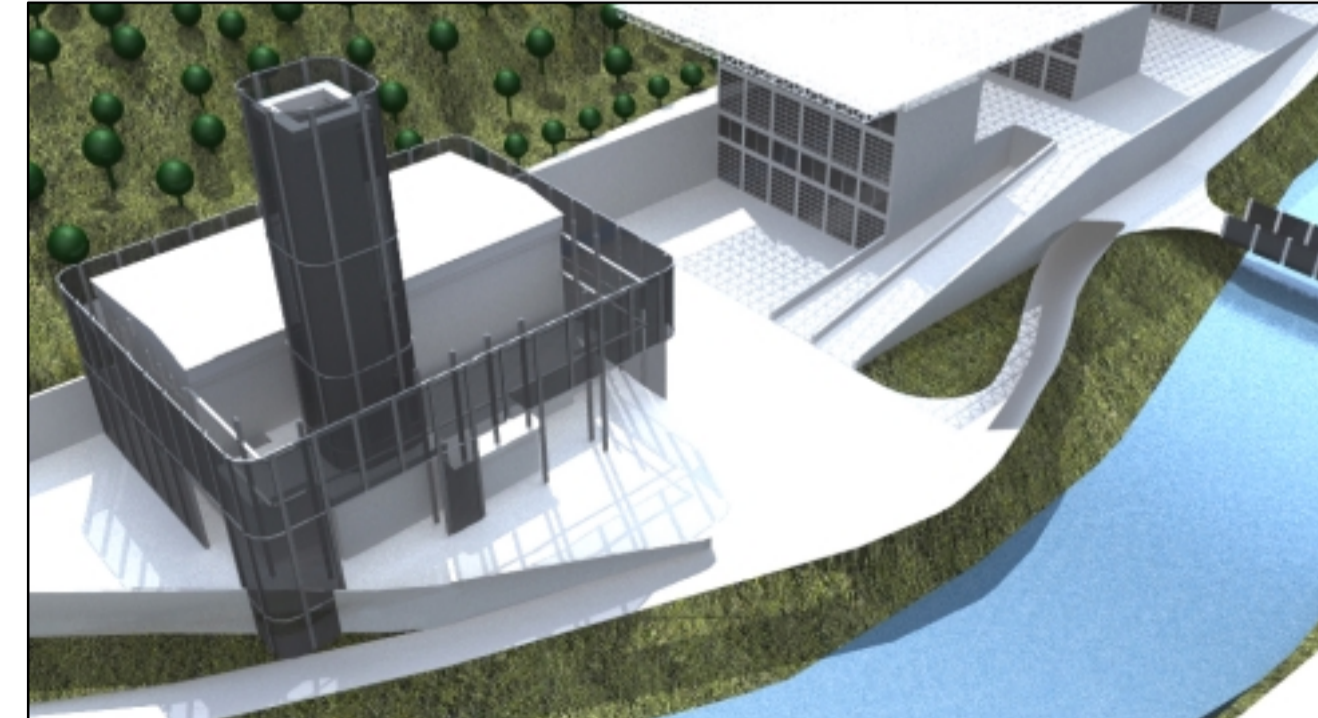
domani



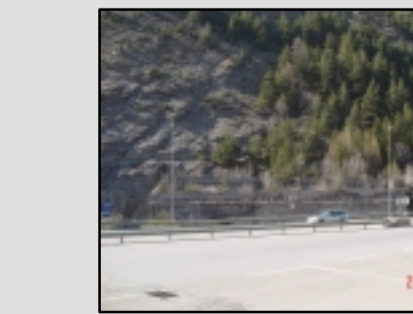
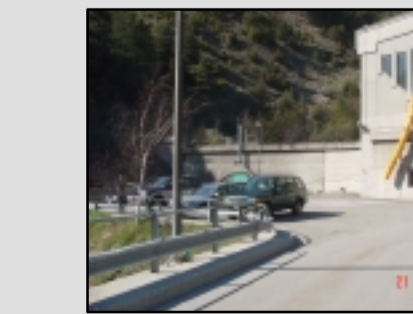
domani



domani



oggi



**STAF** SPA SOCIETÀ ITALIANA TRAFORO AUTOSTRADALE DEL FREJUS SOCIÉTÉ FRANÇAISE DU TUNNEL ROUTIER DU FREJUS

**SFTRF** SOCIÉTÉ FRANÇAISE DU TUNNEL ROUTIER DU FREJUS

**LOMBARDI SA**  
INGEGNERI CONSULENTI

Trafo Autostradale del Frejus / Tunnel Routier du Frejus  
GALLERIA DI SICUREZZA / GALERIE DE SECURITE  
OPERE ESTERNE LATO ITALIA

Centro di soccorso, ventilazione e manutenzione (CSVM)  
Sistemazione centrale di ventilazione esistente  
Nuovo portale al traforo autostradale  
PROGETTO DEFINITIVO 2006

**Immagini virtuali**

24.11.2006	frsp	-			
DATA	DISEGNATO	COSTRUITO	VISTO	Nome file:	
17.12.2004	frsp	-	MO	311.pdf	MO-3145.2-P-311 A

Formato: 60x84 cm    Scala: -    N°. L.F.    N°. Com.

**MO LI NA** Architetti & Designers  
Bellinzona - Svizzera

**SITEC engineering s.r.l.**

Progettisti:  
Ing. Andrea Mordasini (Lombardi SA) .....  
Ing. Marco Russo (Lombardi SA) .....

Collaboratori specialisti:  
Arch. Renzo Molina (Molina & Associati) : .....  
Dott. Ing. Corrado Trasino (Sitec s.r.l.): .....