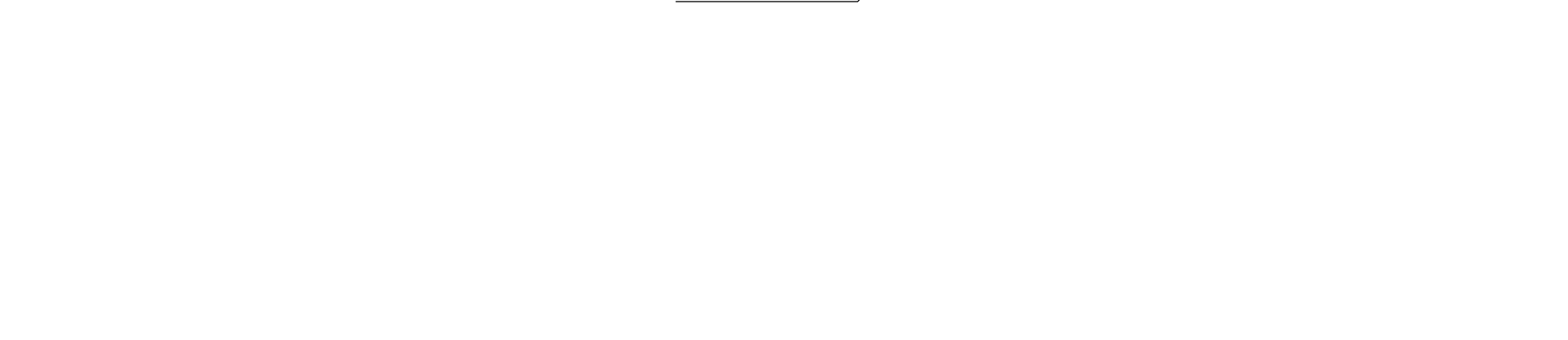
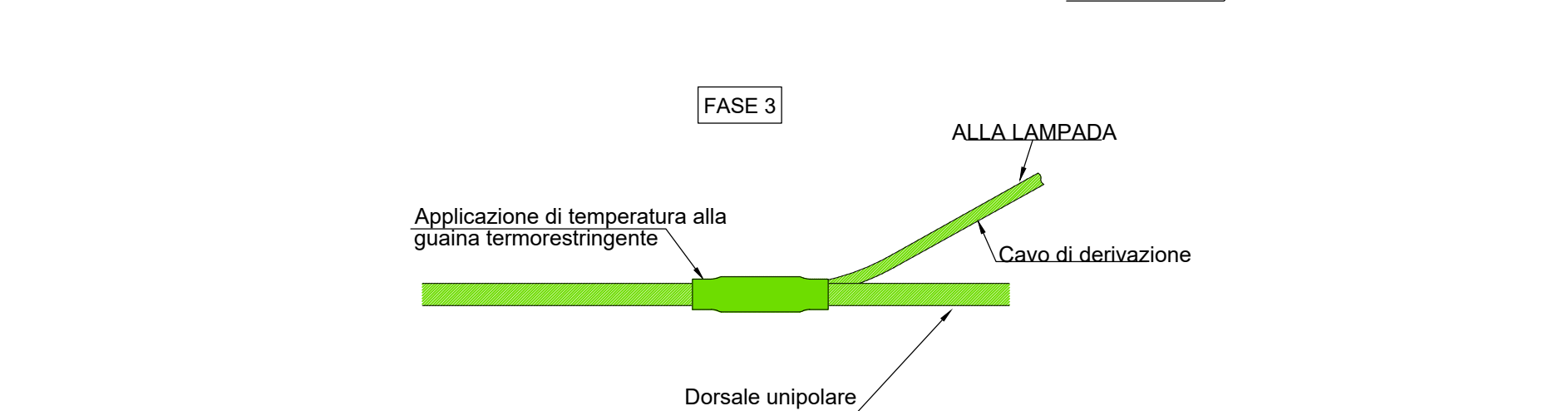
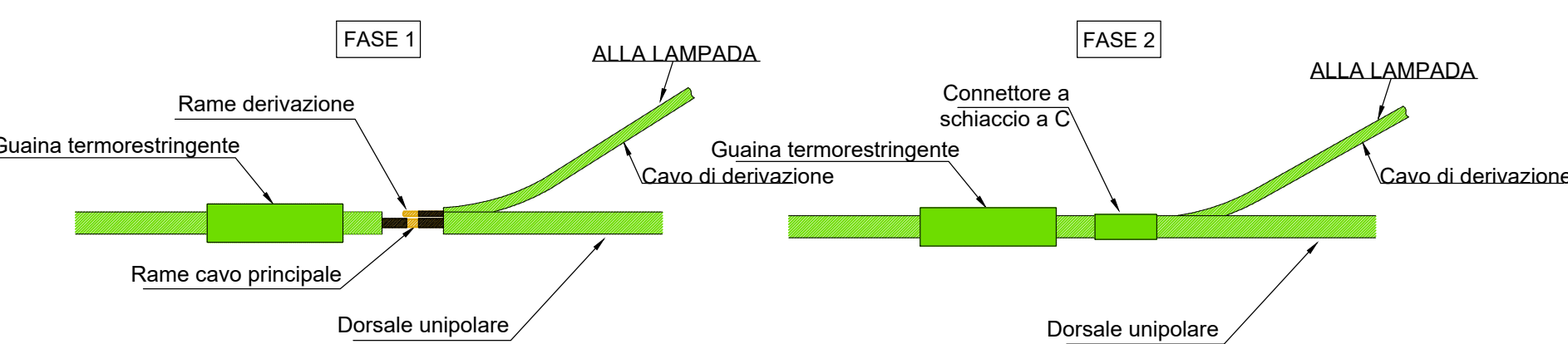


PARTICOLARE POSA CAVIDOTTI
Scala 1:20

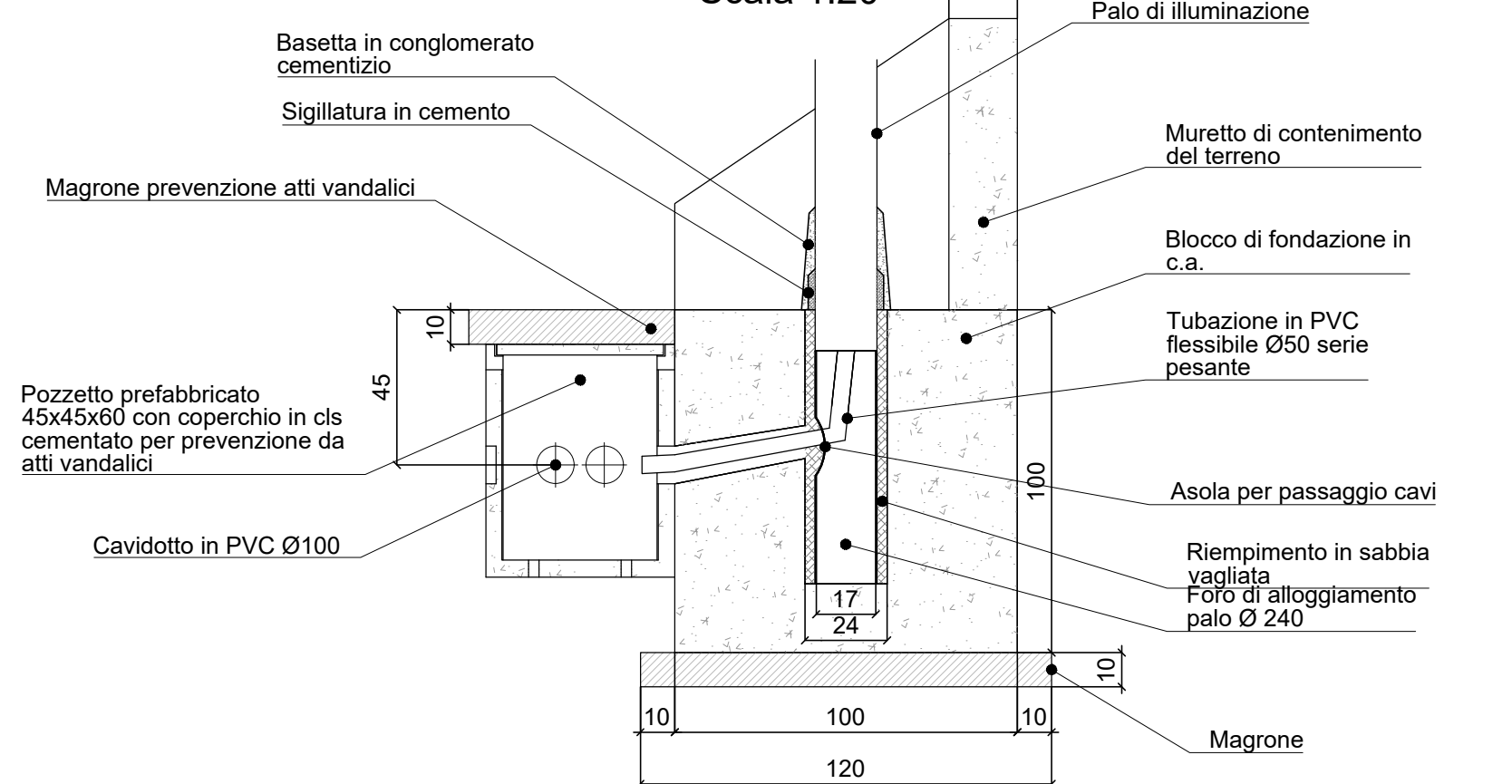
QUADRO ELETTRICO COMPLETO DI APPARECCHIATURE
DI PROTEZIONE E COMANDO
Scala 1:20

PARTICOLARE IMPIANTO DI TERRA QUADRO ELETTRICO
(fuori scala)

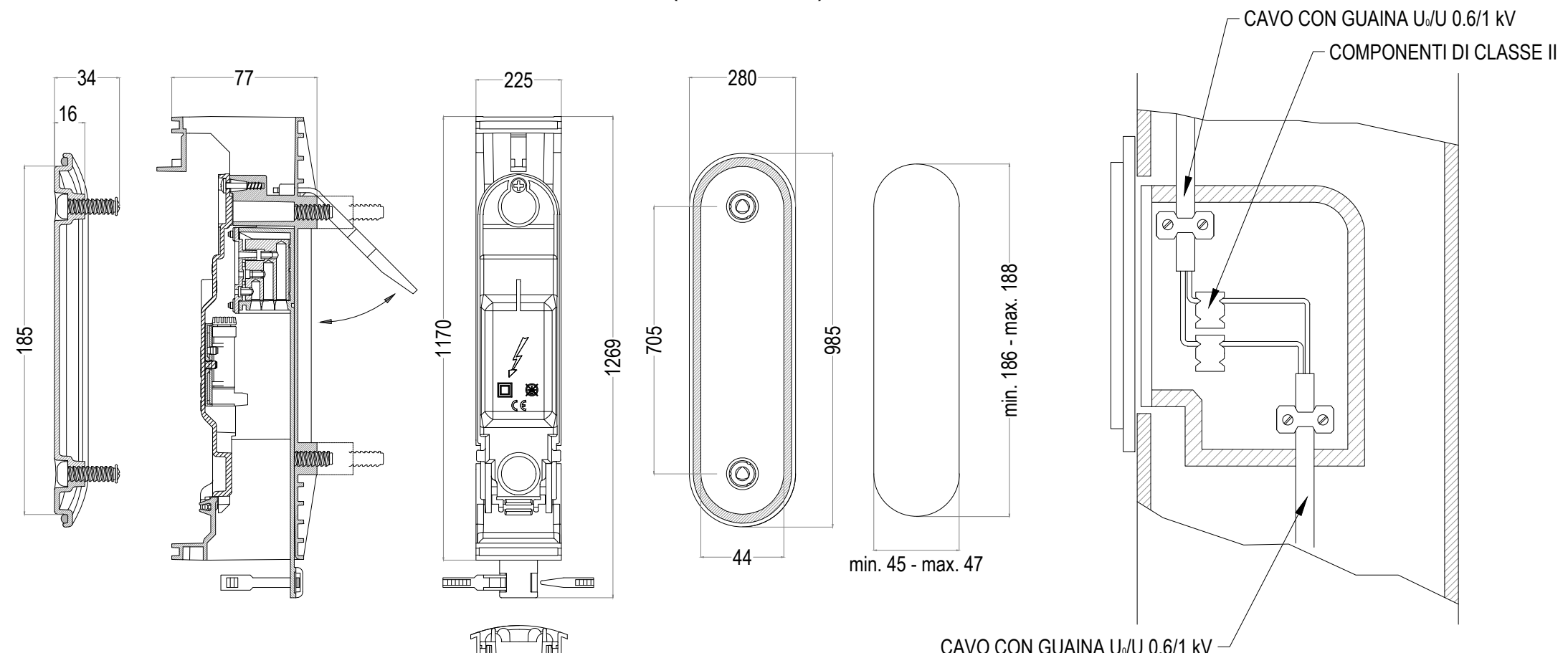
FASI DI COSTRUZIONE GIUNZIONE
TERMORESTRINGENTE IN CLASSE II
(fuori scala)



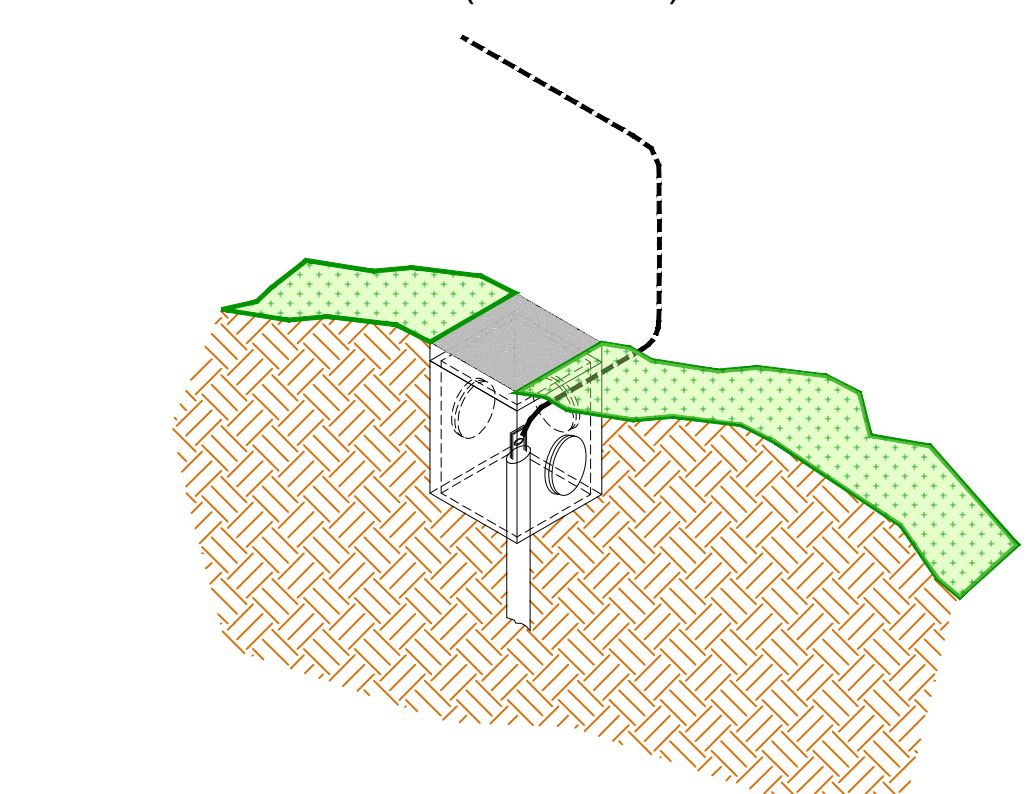
PARTICOLARE BLOCCO DI FONDAZIONE PALO DI ILLUMINAZIONE IN TRINCEA
Scala 1:20



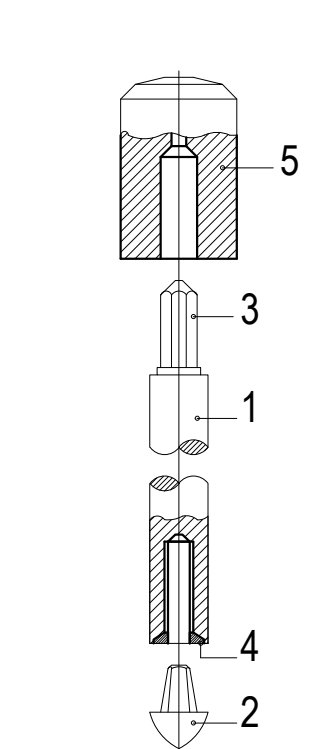
PARTICOLARE MORSETTIERA PORTAFUSIBILI IN CLASSE II
(fuori scala)



PARTICOLARE POZZETTO CON DISPENSORE
(fuori scala)



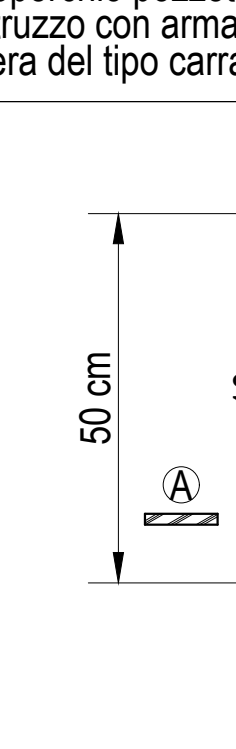
PARTICOLARE 1



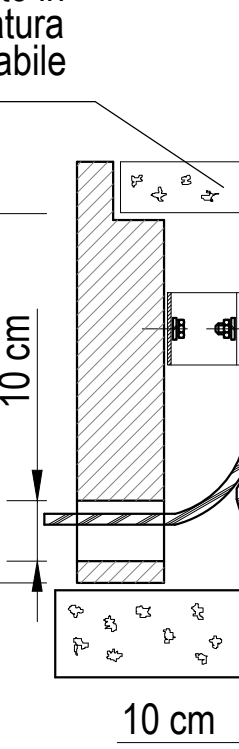
PARTICOLARE 2



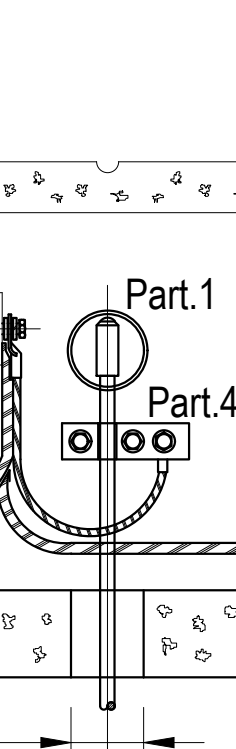
PARTICOLARE 3



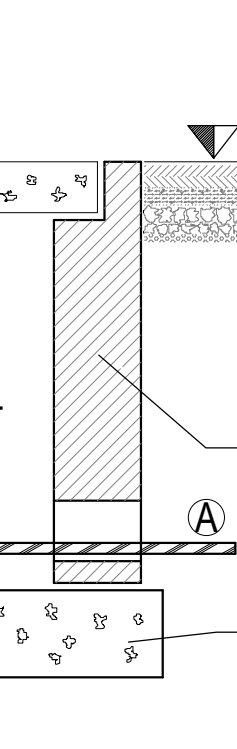
PARTICOLARE 4



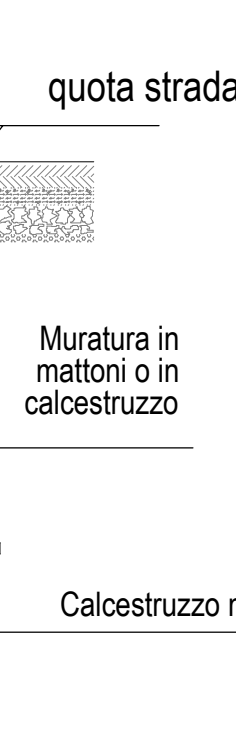
PARTICOLARE 5



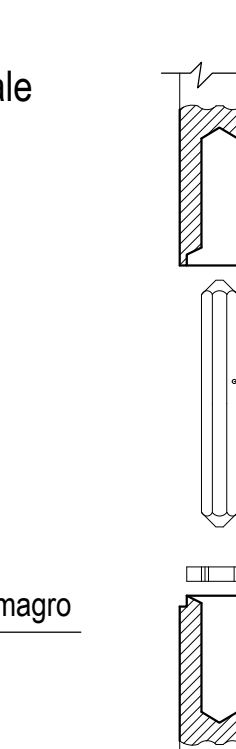
PARTICOLARE 6



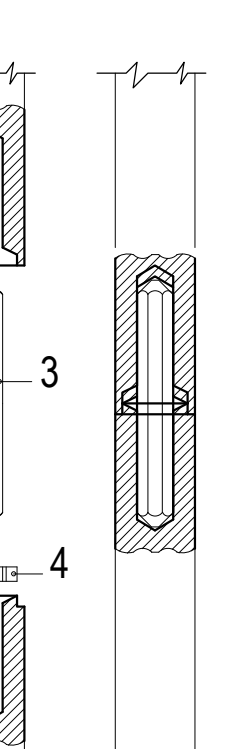
PARTICOLARE 7



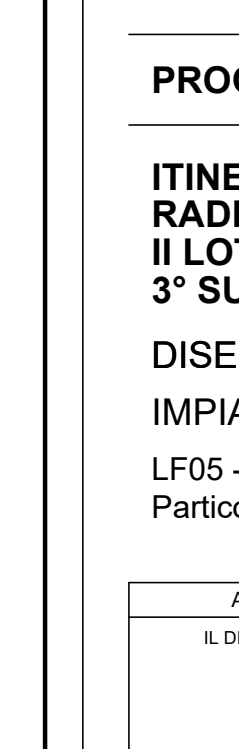
PARTICOLARE 8



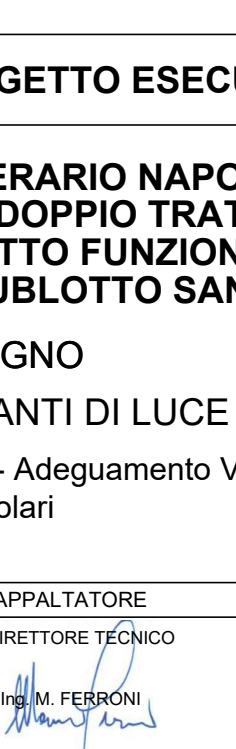
PARTICOLARE 9



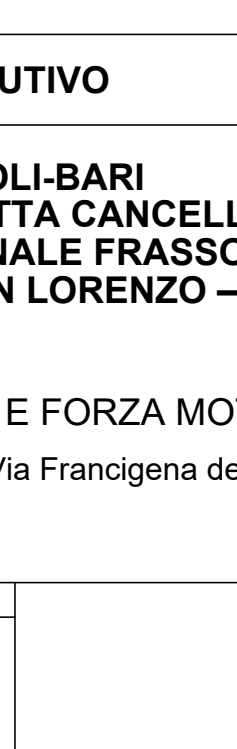
PARTICOLARE 10



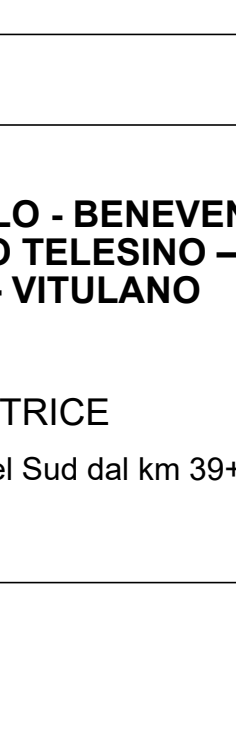
PARTICOLARE 11



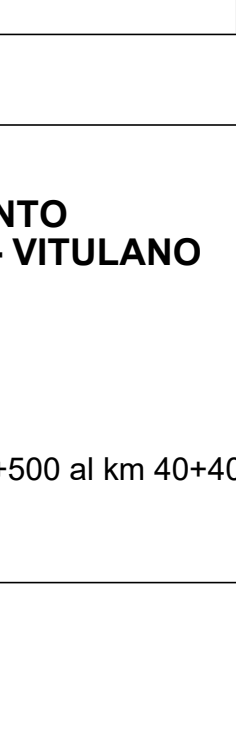
PARTICOLARE 12



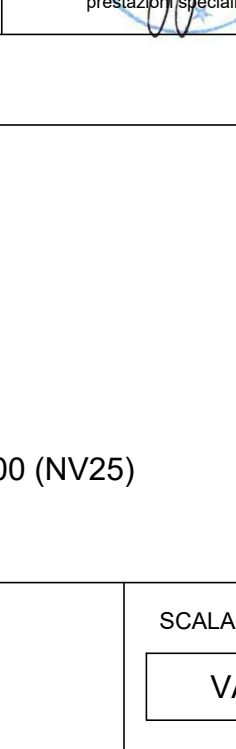
PARTICOLARE 13



PARTICOLARE 14



PARTICOLARE 15



COMMITTENTE: **RFI**
RETE FERROVIARIA ITALIANA
GRUPPO FERROVIE DELLO STATO ITALIANE

DIREZIONE LAVORI: **ITALFERR**
GRUPPO FERROVIE DELLO STATO ITALIANE

APPALTATORE: **TELESE S.c.a.r.l.**
Consorzio Telese Servizi Coesistenti e Responsabili Limitata

PROGETTAZIONE: **Ghella**, **ITINERA**, **SALCEF**, **COGET IMPIANTI**

MANDATARIA: **SYSTRA**, **SWS**, **SOTECNI**

PROGETTO ESECUTIVO

ITINERARIO NAPOLI-BARI
RADDOPPIO TRATTA CANCELLO - BENEVENTO
II LOTTO FUNZIONALE FRASSO TELESINO - VITULANO
3° SUBLOTTO SAN LORENZO - VITULANO

DISEGNO
IMPIANTI DI LUCE E FORZA MOTRICE
LF05 - Adeguamento Via Francigena del Sud dal km 39+500 al km 40+400 (NV25)
Particolari

APPALTATORE: **TELESE S.c.a.r.l.** SCALA: **VARIE**

COMMESSA: **LF05** LOTTO: **3** FASE: **2** ENTE: **RFI** TIPO DOC.: **B** OPERA/DISCIPLINA: **L** PROG.: **0500** REV.: **001**

| Rev. | Descrizione | Redatto | Data | Verificato | Data | Approvato | Data | Autorizzato Data |
|------|-----------------------------|---------|------------|------------|------------|-------------|------------|-----------------------------|
| A | EMMISSIONE | M. COVA | 23/06/2021 | L. MELICA | 24/06/2021 | A. CARLUCCI | 24/06/2021 | IL PROGETTISTA O. DIAPOLINO |
| B | REVISIONE A SEGUITO DI REV. | M. COVA | 28/10/2021 | L. MELICA | 30/10/2021 | A. CARLUCCI | 30/10/2021 | |