

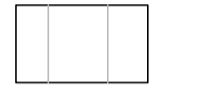
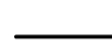
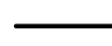
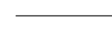


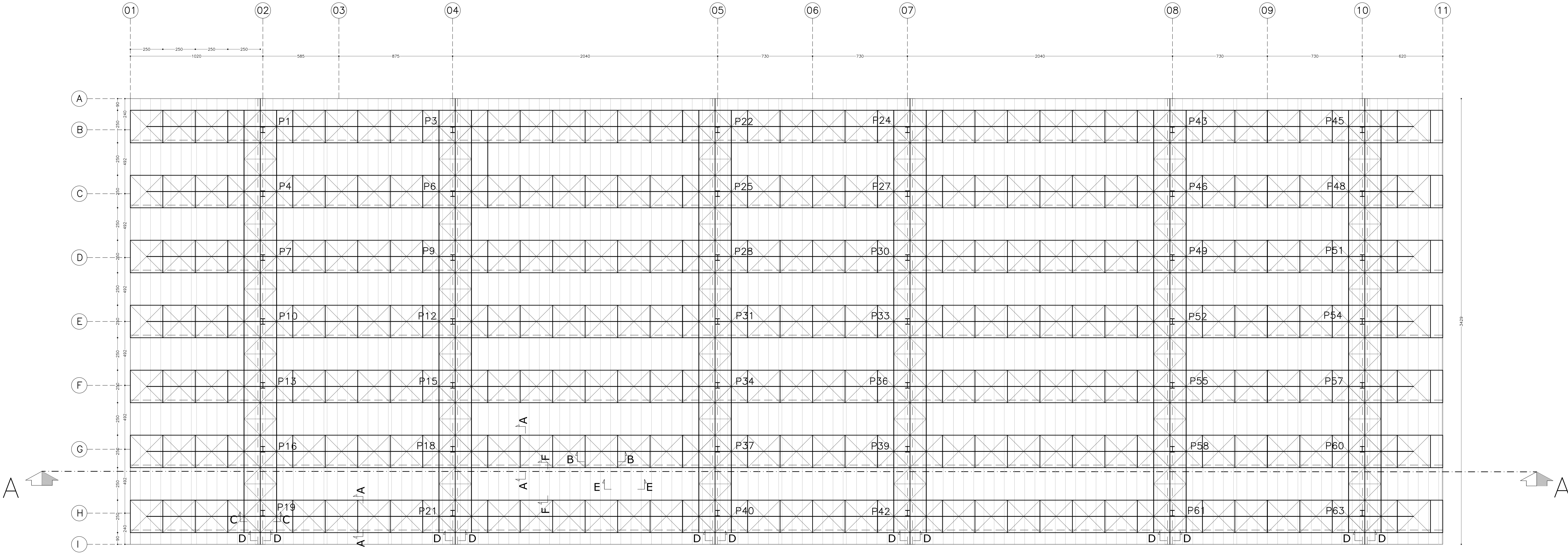
PLANIMETRIA SCHEMATICA CARPENTERIA COPERTURA GENERALE

Scala 1:50

MATERIALI	
BULLONATURE IN ACCIAIO INOX AISI 316	
ACCIAIO PER CARPENTERIA	Fe 510 C ZINCATO A CALDO NORMA UNI-E 14.07.000.0
SALDATURE	CLASSE I UNI 51327/4, UNI 7278/74 UNI 4634/63

LEGENDA

-  pilastri in acciaio Fe 510
profilato HE 450 B - UNI 5397
-  sezioni particolari costruttivi
(vedi tavola relativa)
-  manto di copertura in lastre nervate traslucide
-  Travi superiori
-  Travi inferiori
-  Travi di collegamento



CORPO A

CORPO B

CORPO C

					
Traforo Autostradale del Fréjus / Tunnel Routier du Fréjus					
COSTRUZIONE GALLERIA DI SICUREZZA / CONSTRUCTION GALERIE DE SECURITE					
PROGETTO DEFINITIVO 2006 / PROJÉT 2006					
OPERE ESTERNE LATO ITALIA					
CENTRO DI SOCCORSO VENTILAZIONE E MANUTENZIONE CSVM					
EDIFICIO B-C					
PLANIMETRIA SCHEMATICA CARPENTERIA COPERTURA GENERALE					
24.11.2006	DZ CT MO	15.09.2006	DZ CT MO	6145.2-P-318	A
DATA	DISEGNATO	COSTRUITO	VISTO	nome file :	
15.09.2006	DZ	CT	MO	6145.2-P-318A.dwg	
Formato : 1470x94	Scala : 1:100	No.	No. Com.		
					
Progettisti: Ing. Andrea Mordasini, Dott. Ing. Marco Russo - Lombardi SA Collaborazione specialistica: Arch. Renzo Molino, Dott. Ing. Corrado Trantino					